

BENCHMARK:
CITY OF HOUSTON SURVEY MARKER 5354-106
E.L. + 47.50, N.G.S., 1964 ADJUSTMENT.
LOCATED AT S.E. CORNER OF OLD SPANISH
TRAIL AND ALMEDA ROAD.

NOTE:
TOPOGRAPHY BASED UPON SURVEY INFORMATION
PROVIDED BY SURVCON, INC., DATED OCTOBER,
1984. SEE SHEETS L-1 THRU L-37 FOR LEGEND.
POSSIBLE UTILITY CONFLICTS AND ADDITIONAL
SURVEY INFORMATION.

REFER TO DRAWING NO. L-48 FOR LEGEND

MATCH LINE SHEET L-72

MATCH LINE SHEET L-76

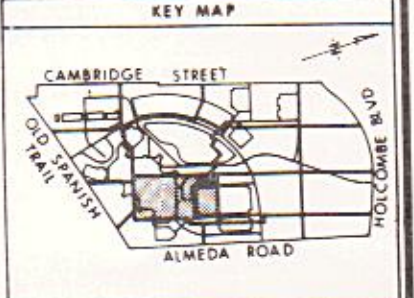
MATCH LINE SHEET L-79

MATCH LINE SHEET L-80

REFER TO DWG. NO. L-106
FOR SIDEWALK & P.V.M.T.
ELEVATIONS AROUND BLDG.

REFER TO DWG. NO. L-108
FOR SIDEWALK & P.V.M.T.
ELEVATIONS AROUND BLDG.

REFER TO DWG. NO. L-107
FOR SIDEWALK & P.V.M.T.
ELEVATIONS AROUND BLDG.



3D/INTERNATIONAL AND STONE, MARRACCINI AND PATTERSON
3D/I • SMP A JOINT VENTURE HOUSTON, TEXAS
1800 WEST LOOP SOUTH, SUITE 200 HOUSTON, TEXAS 77027 TELEPHONE (713) 871-7000

STRUCTURAL AND CIVIL MECHANICAL AND ELECTRICAL
WALTER P. MOORE AND ASSOCIATES, INCORPORATED
YANDELL & HILLER, INC. AND 3D/INTERNATIONAL



PHASE II
Drawing Title
CIVIL SITE PLAN-GRADING
Approved Project Director
AC Pappalardo

SCALE: 1" = 30'
Project Title
REPLACEMENT / MODERNIZATION MEDICAL CENTER
Building Number
Checked MLL
Drawn R.F.
Location
VAMC HOUSTON, TEXAS

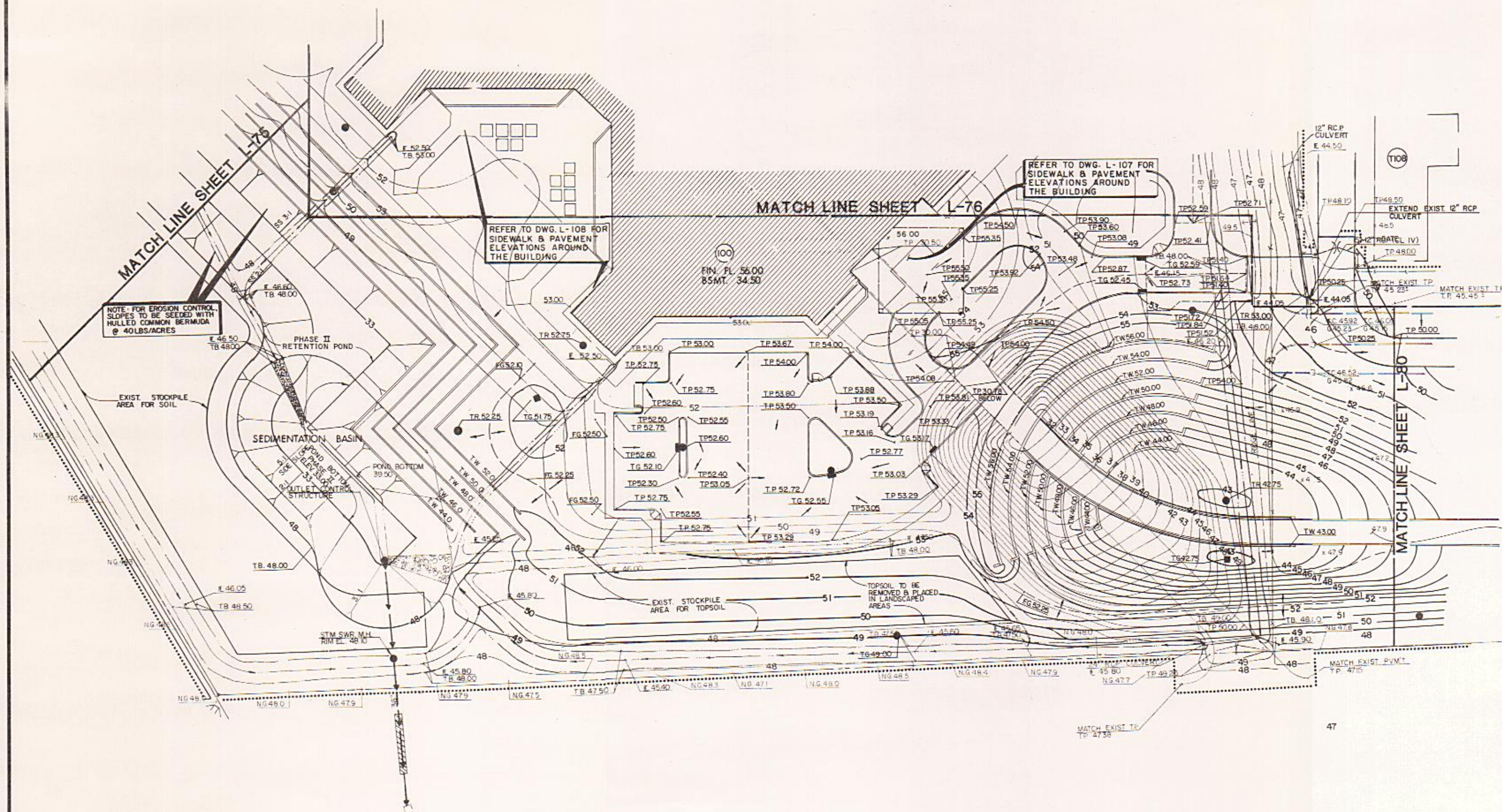
Date
2 JAN 87
Project No.
580-040
DRAWING NO.
L-76
Date 6/4/88

Veterans Administration

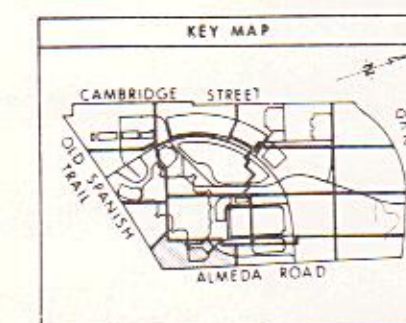
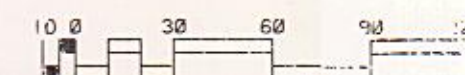
BENCHMARK:
CITY OF HOUSTON SURVEY MARKER 5354-K10
E.L. = 47.50; N.G.S., 1964 ADJUSTMENT.
LOCATED AT S.E. CORNER OF OLD SPANISH
TRAIL AND ALMEDA ROAD.

NOTE:
TOPOGRAPHY BASED UPON SURVEY INFORMATION
PROVIDED BY SURVCON, INC. DATED OCTOBER,
1984. SEE SHEETS L-1 THRU L-37 FOR LEGEND,
POSSIBLE UTILITY CONFLICTS AND ADDITIONAL
SURVEY INFORMATION.

REFER TO DRAWING NO. L-48 FOR LEGEND



FOR ROADWAY PLAN & PROFILE SEE DWG. NO. L-89



3D/INTERNATIONAL AND STONE, MARRACCINI AND PATTERSON
3D/I • SMP A JOINT VENTURE HOUSTON, TEXAS
1800 WEST LOOP SOUTH, SUITE 200 HOUSTON, TEXAS 77027 TELEPHONE (713) 871-7000

STRUCTURAL AND CIVIL
MECHANICAL AND ELECTRICAL

WALTER P. MOORE AND ASSOCIATES, INCORPORATED
TRANEL & MILLER, INC. AND 3D/INTERNATIONAL



PHASE II
Drawing Title
CIVIL SITE PLAN-GRADING

SCALE: 1" = 30'

Project Title
REPLACEMENT /
MODERNIZATION
MEDICAL CENTER

Date
2 JAN 87

Project No.
580-040

Approved Project Director

ACF Appointed

Building Number

Checked
M.L.L.

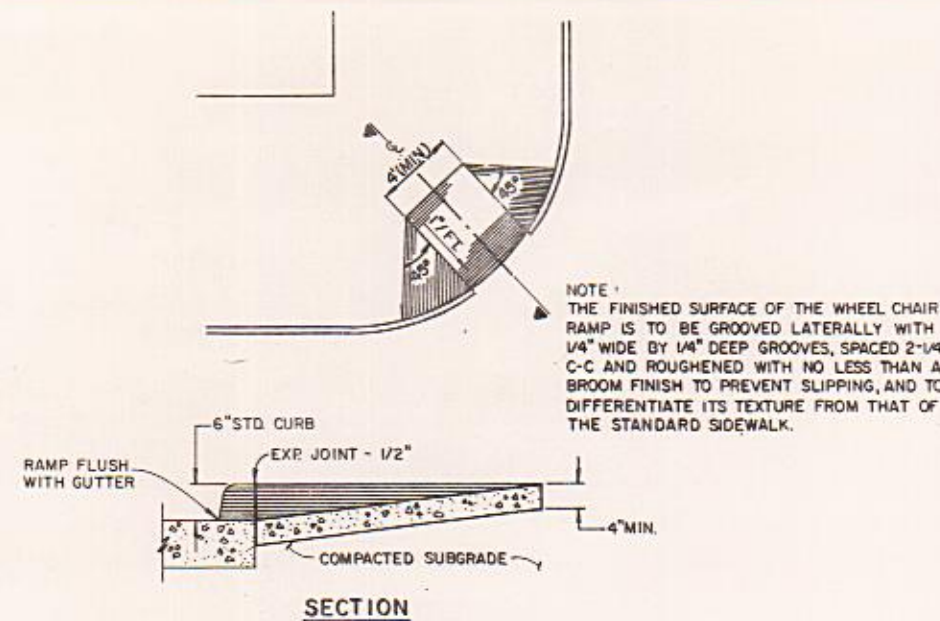
Drawn
R.F.

Location
VAMC HOUSTON, TEXAS

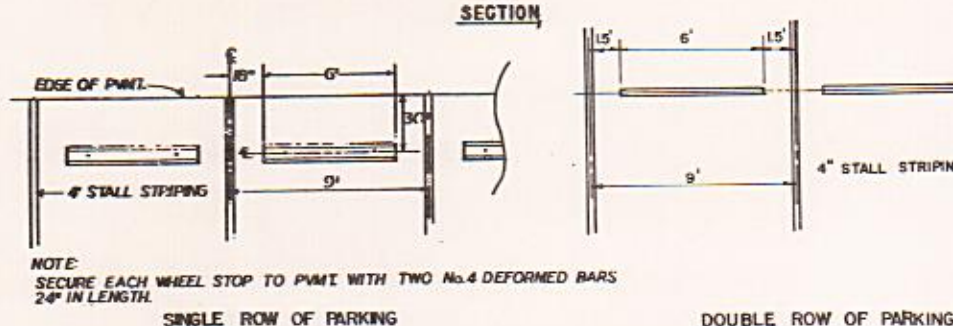
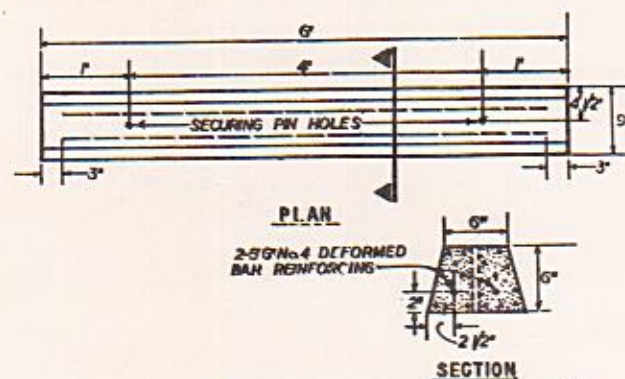
Drawing No.
L-79

Page 55 of 98

Administration



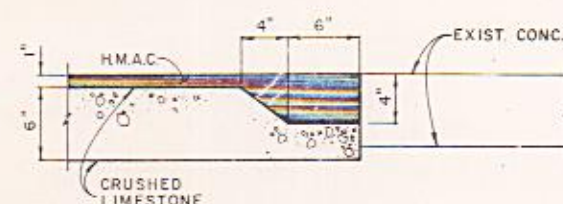
CORNER WHEEL CHAIR RAMP (10)
NOT TO SCALE



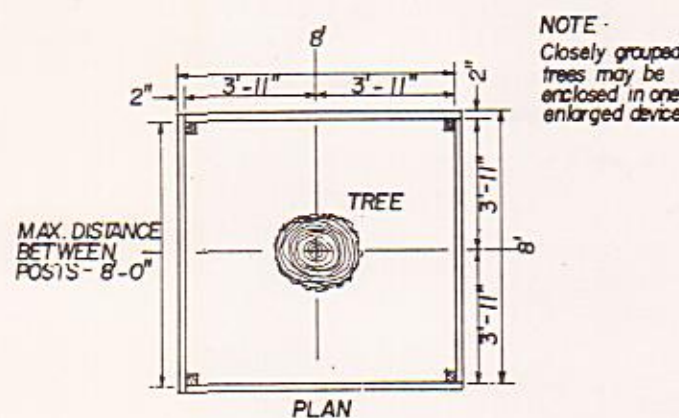
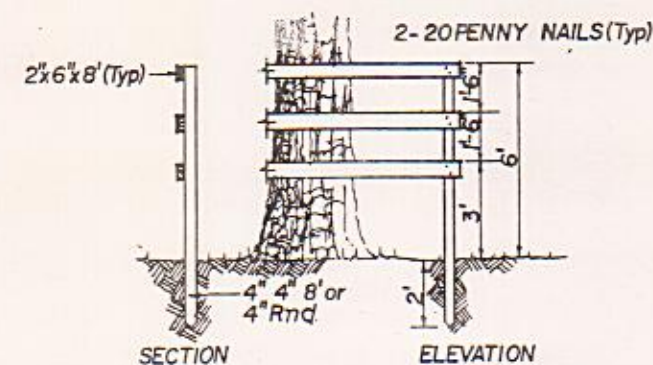
CONCRETE WHEEL STOPS (11)
NOT TO SCALE



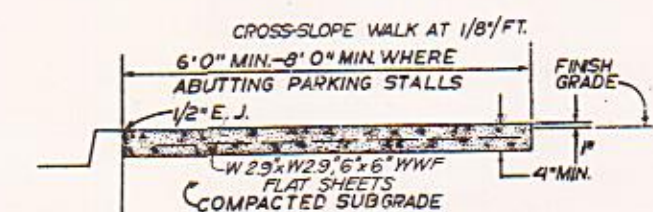
PAVEMENT SECTION FOR TEMPORARY ROAD (12)
NOT TO SCALE



THICKENED ASPHALT EDGE (13)
NOT TO SCALE

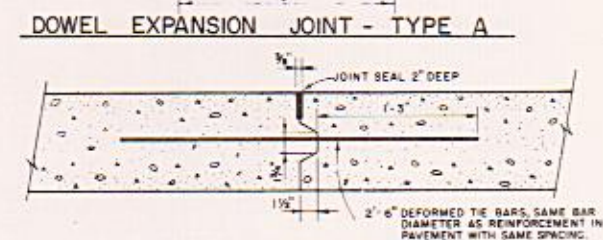
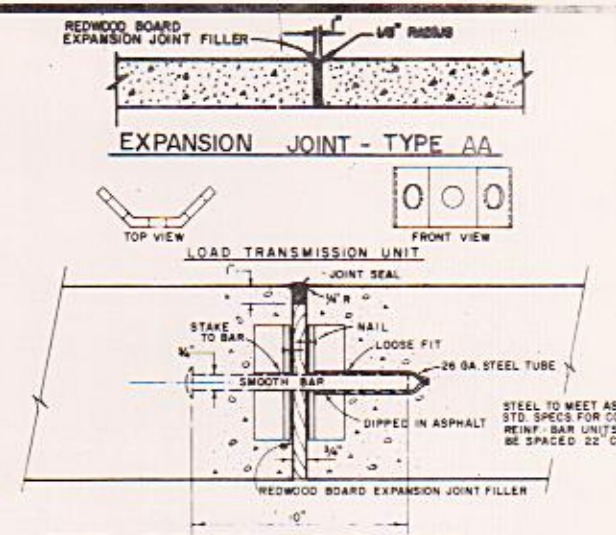


TREE PROTECTION DEVICE (8)
NOT TO SCALE

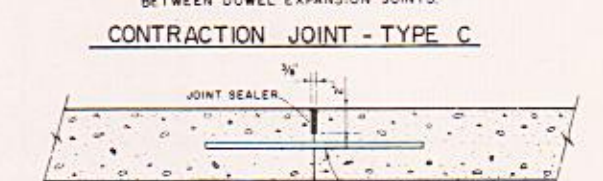
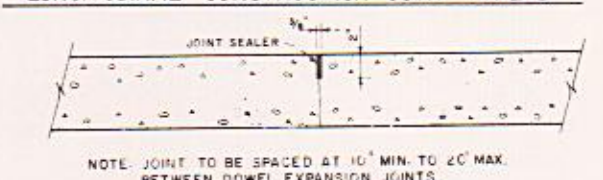


PROVIDE MIN. 3' RADIUS FILLETS AT ALL WALK INTERSECTIONS
PROVIDE 4\"/>

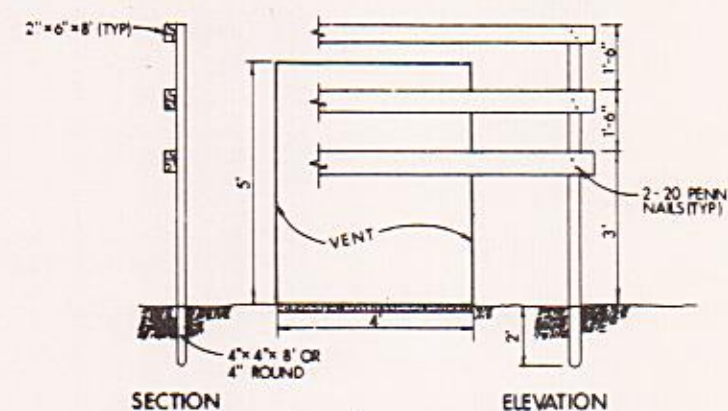
CONC. PEDESTRIAN PAVEMENT (9)
NOT TO SCALE



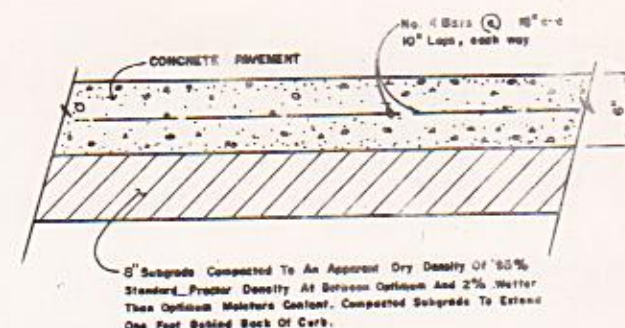
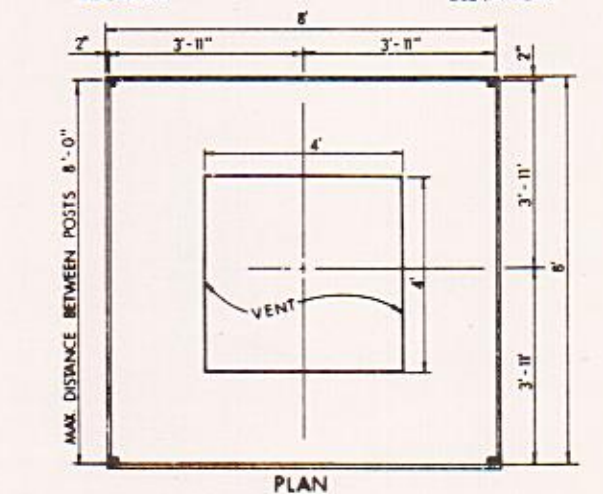
LONGITUDINAL CONSTRUCTION JOINT - TYPE B



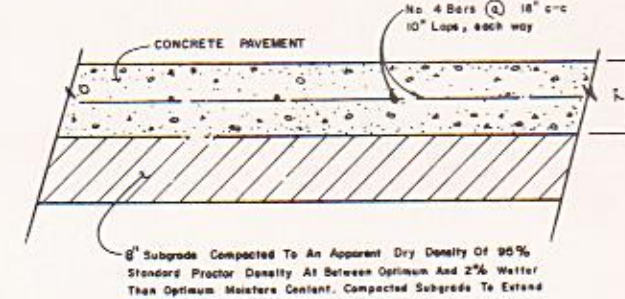
PAVEMENT JOINTS (6)
NOT TO SCALE



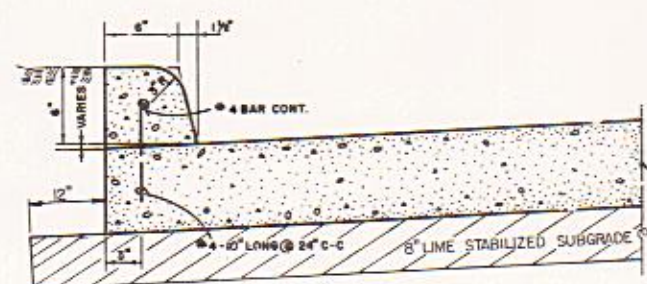
STEAM TUNNEL VENT PROTECTION DEVICE (7)
NOT TO SCALE



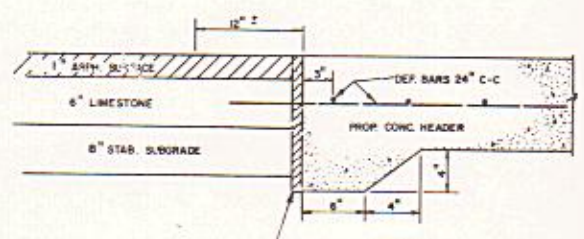
CONCRETE PAVEMENT (1)
NOT TO SCALE



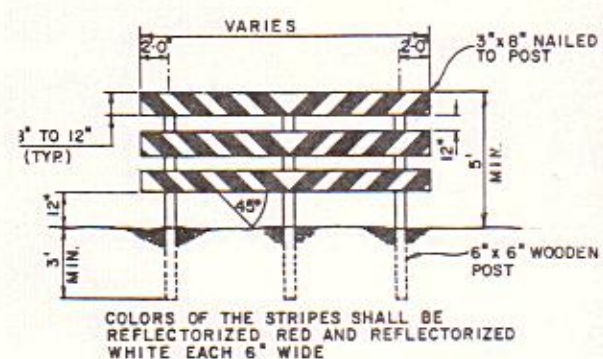
CONCRETE PAVEMENT (2)
NOT TO SCALE



CONCRETE CURB - DOWELLED ON (3)
NOT TO SCALE



STANDARD PAVING HEADER (4)
NOT TO SCALE



BARRICADE DETAIL (5)
NOT TO SCALE

3D/INTERNATIONAL AND STONE, MARRACCINI AND PATTERSON
3D/I • SMP A JOINT VENTURE HOUSTON, TEXAS
1900 WEST LOOP SOUTH, SUITE 200 HOUSTON, TEXAS 77027 TELEPHONE (713) 871-7000

STRUCTURAL AND CIVIL MECHANICAL AND ELECTRICAL WALTER P. MOORE AND ASSOCIATES, INCORPORATED YANDELL & HOLLER, INC. AND 3D/INTERNATIONAL



PHASE II

Drawing Title
PAVING AND GRADING DETAILS

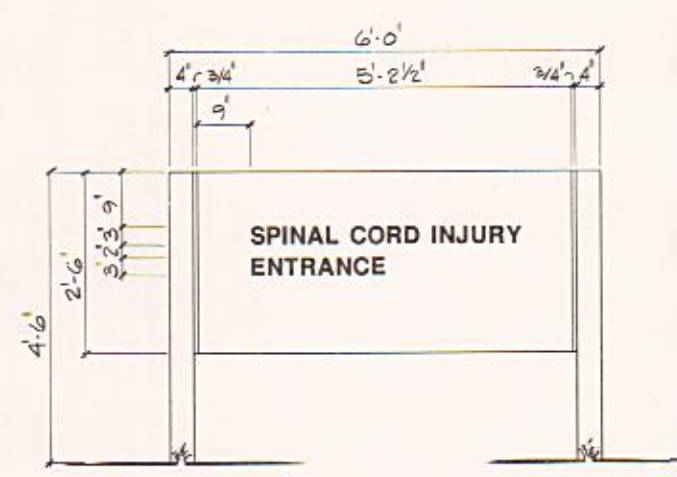
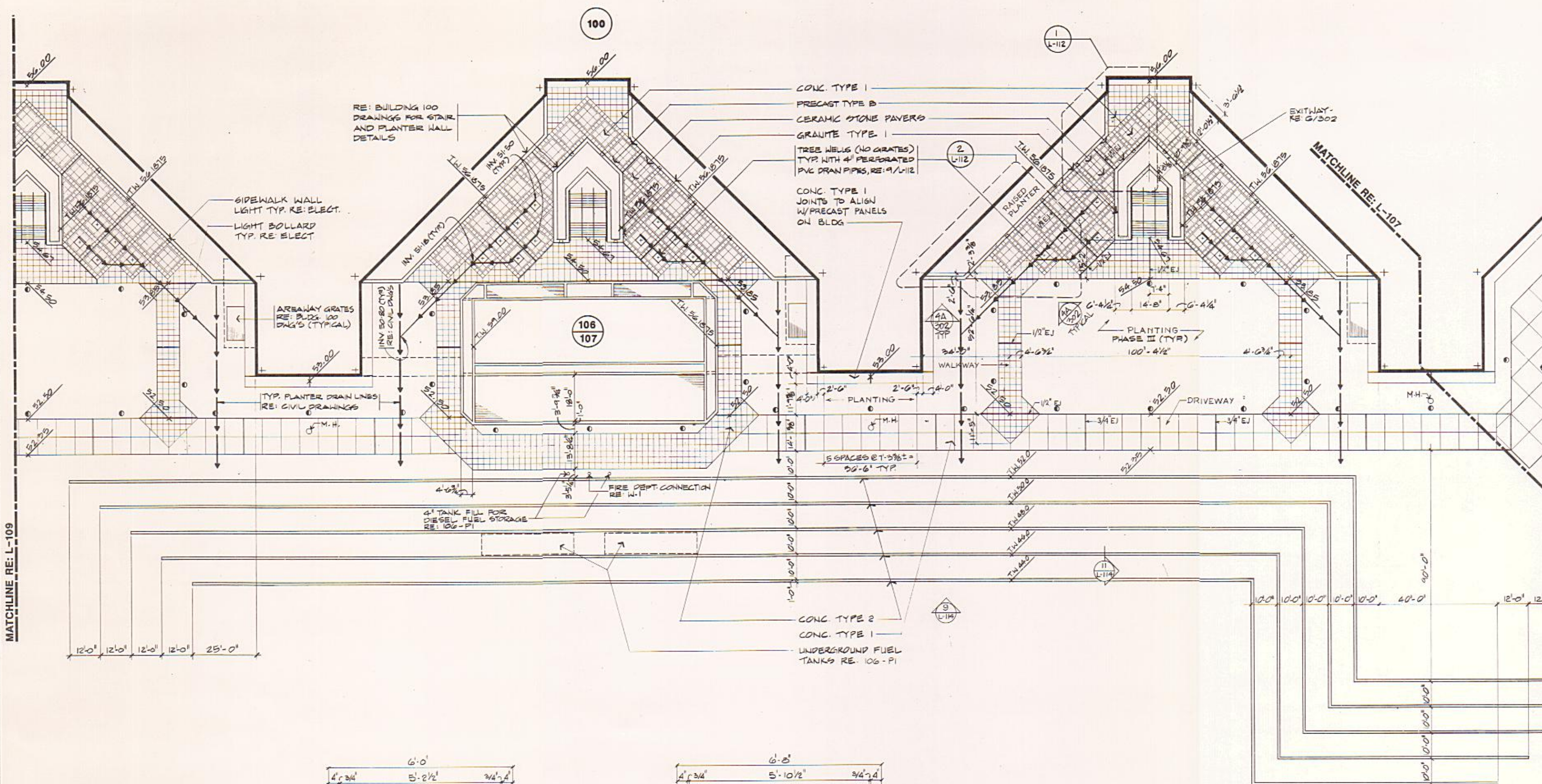
Approved Project Director

Signature of Project Director

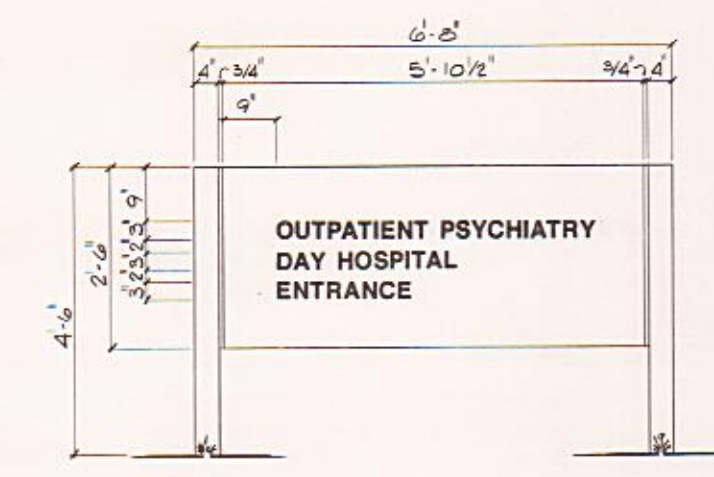
Project Title REPLACEMENT / MODERNIZATION MEDICAL CENTER	Date 2 JAN 87
Project No. 580-040	Drawing No. L-82
Building Number VAMC HOUSTON, TEXAS	Dep. 67 of 98

Veterans Administration

MATCHLINE RE: L-109

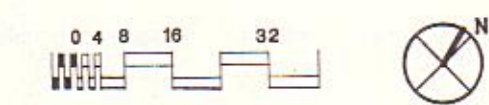


2 DETAIL
L-108 SCALE: 3/4" = 1'-0"



1 DETAIL
L-108 SCALE: 3/4" = 1'-0"

NOTE:
CURBS WILL BE SAME CONC. TYPE
AS ADJACENT SIDEWALK UNLESS
NOTED OTHERWISE.



3D/INTERNATIONAL AND STONE, MARRACCINI AND PATTERSON 3D/I • SMP A JOINT VENTURE HOUSTON, TEXAS 1900 WEST LOOP SOUTH, SUITE 200 HOUSTON, TEXAS 77027 TELEPHONE (713) 871-7000			PHASE II Drawing Title: DETAIL SITE PLAN SOUTH SIDE BUILDING 100 Scale: 1/8" = 1'-0"		Project Title: REPLACEMENT / MODERNIZATION MEDICAL CENTER		Date: 2 JAN. 87	
STRUCTURAL AND CIVIL MECHANICAL AND ELECTRICAL			Approved Project Director: <i>A. Rappaport</i>		Building Number: 100 Location: VAMC HOUSTON, TEXAS		Project No.: 580-040 Drawing No.: L-108 Dwg. 8801 93	