

ARCHITECTURAL SYMBOLS

CENTER LINE

(N)
NEW WORK

(E)
EXISTING CONDITIONS

ELEVATION INDICATOR

CENTER LINE INDICATOR

CONTRACT LIMIT LINE

DEMOLITION LINE

EXISTING TO REMAIN LINE

FEATURES ABOVE LINE INDICATOR

BREAK, ROUND (USER DEFINES SIZE)

BREAK, STRAIGHT (SEE SECTION INDICATORS, BUILDING, WITH BREAK STANDARDS)

DETAIL INDICATOR

DETAIL INDICATOR

DETAIL INDICATOR FOR SMALL CONDITIONS

DIMENSION LINE

DOOR OPENING/BORROWED LIGHT IDENTIFIER

ROOM NAME AND NUMBER

NORTH ARROW

MATERIALS LEGEND

CONCRETE TO REMAIN

EARTH NEW CONSTRUCTION

BASE COURSE

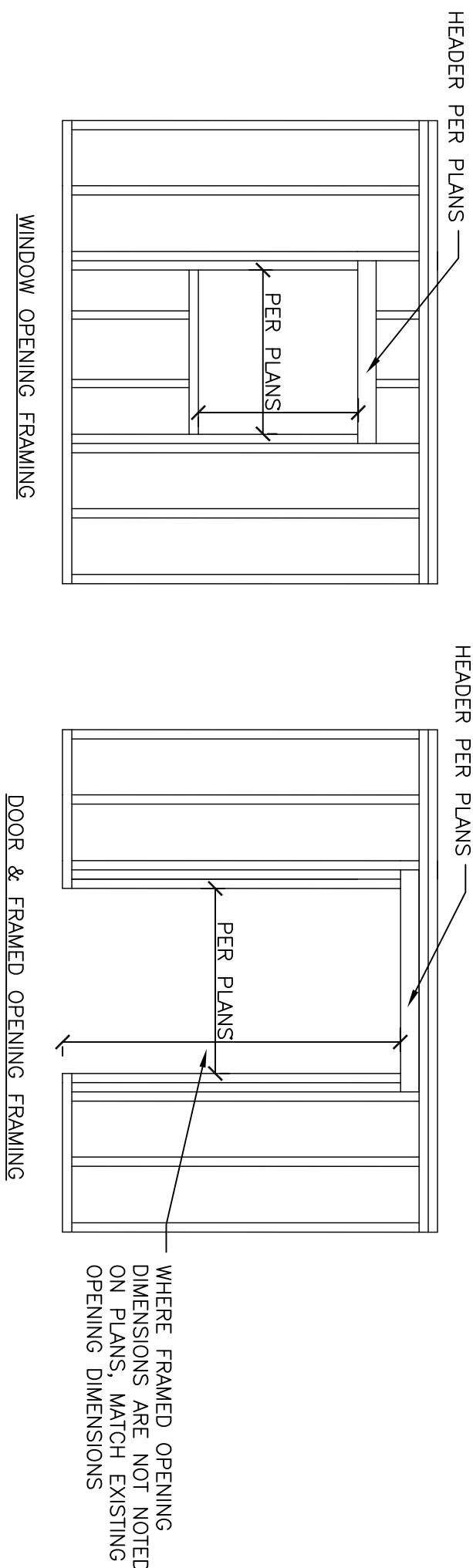
| DOOR SCHEDULE | | | | | | NOTES |
|---------------|-------|--------|-------|--------|-----------------------------------|---|
| WM | IN | IN | IN | IN | IN | |
| A | 3'-0" | 19'-4" | 6'-8" | [2033] | DETAIL: ROOM WITH LAMINATED GLASS | 1. ALL DOORS SHALL BE FLUSH - 1 3/4" [44mm] THICK UNLESS NOTED OTHERWISE. 2. TOP & SIDE RAILS SHALL BE 3" [72mm] MIN. BOTTOM RAILS SHALL BE 12" MIN. [25mm]. |
| B | 3'-0" | 19'-4" | 6'-8" | [2033] | DOOR: 100% LAMINATED GLASS | |
| C | 3'-0" | 19'-4" | 6'-8" | [2033] | DOOR: 100% LAMINATED GLASS | |

DOOR SYMBOL

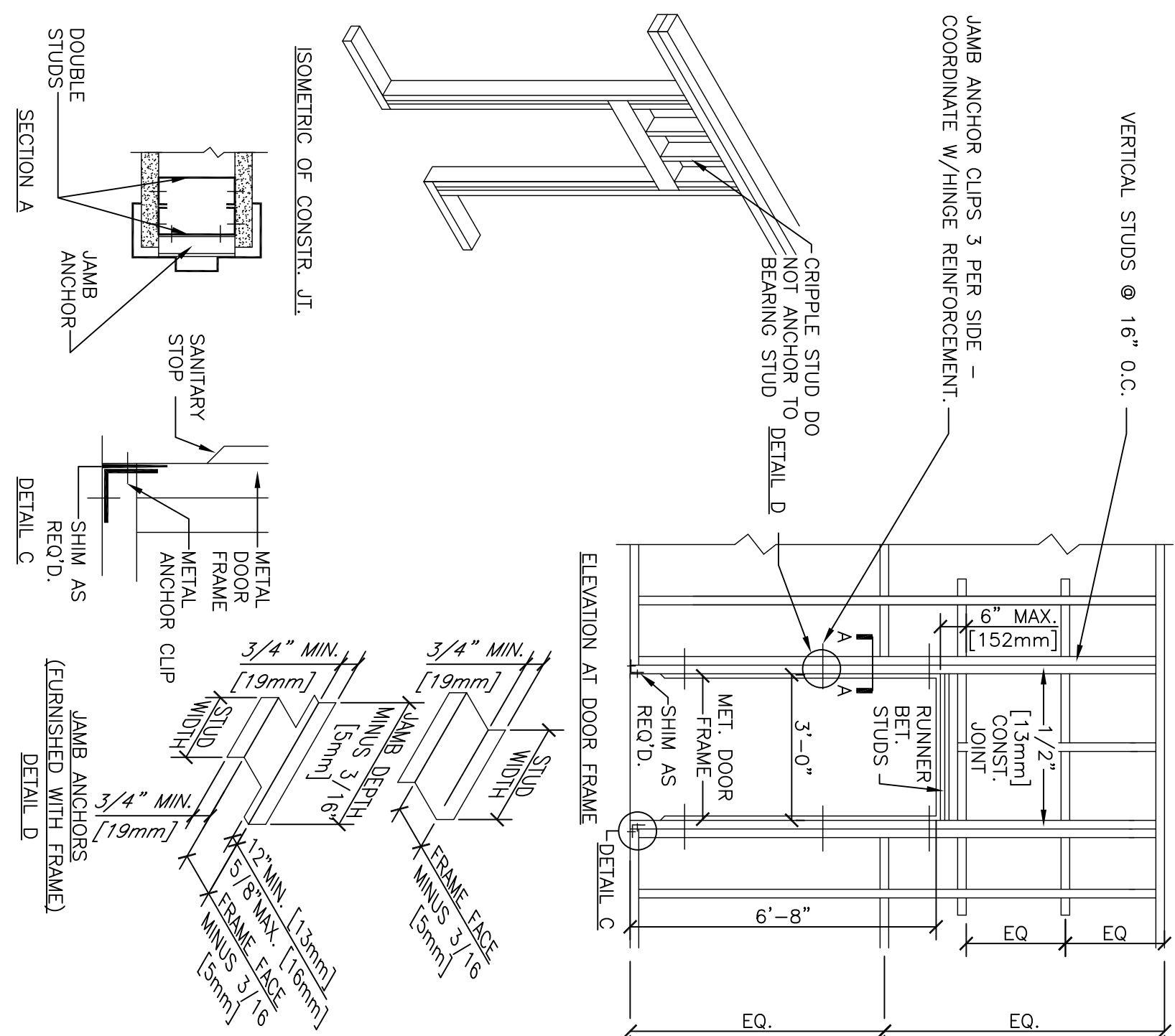
DOOR ELEVATION

DOOR WK

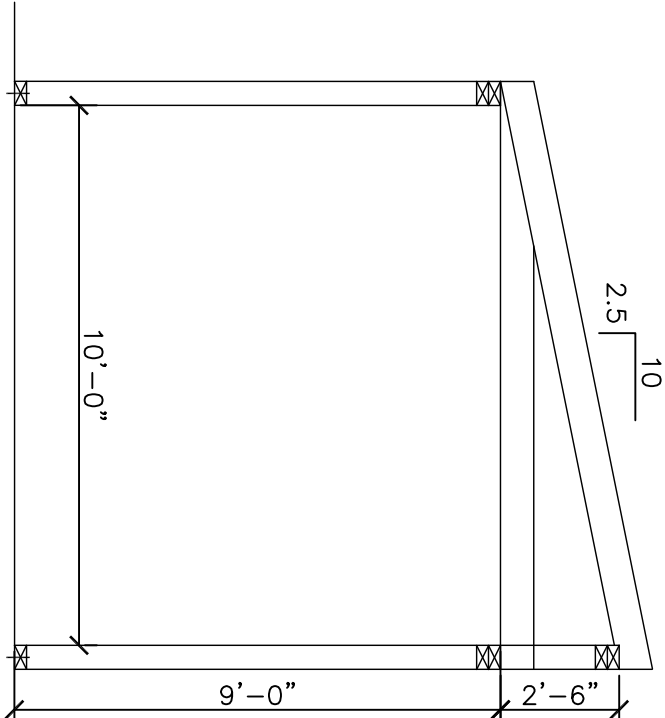
1. TYP. OPENING FRAMING



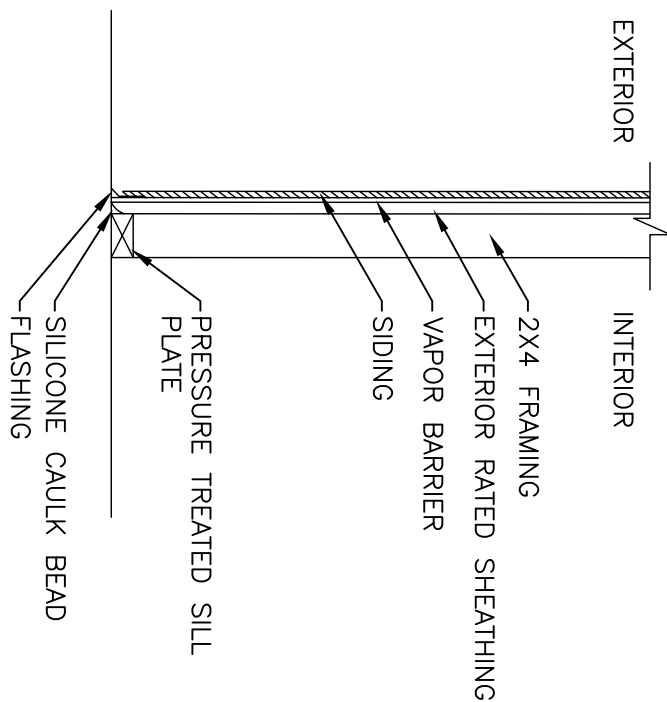
1. FRAMING FOR DOORS



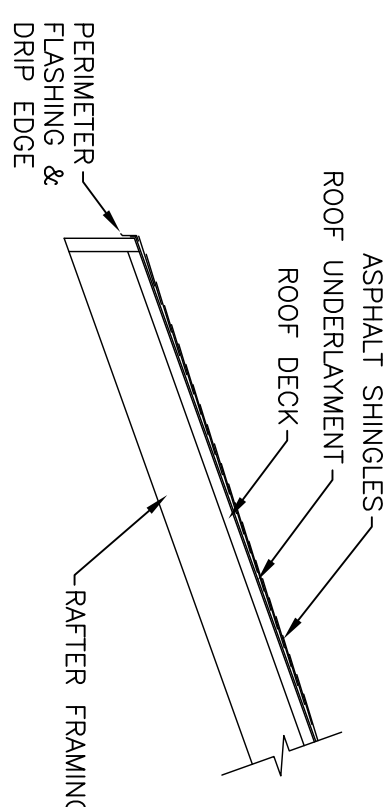
3. WALKWAY FRAMING SECTION



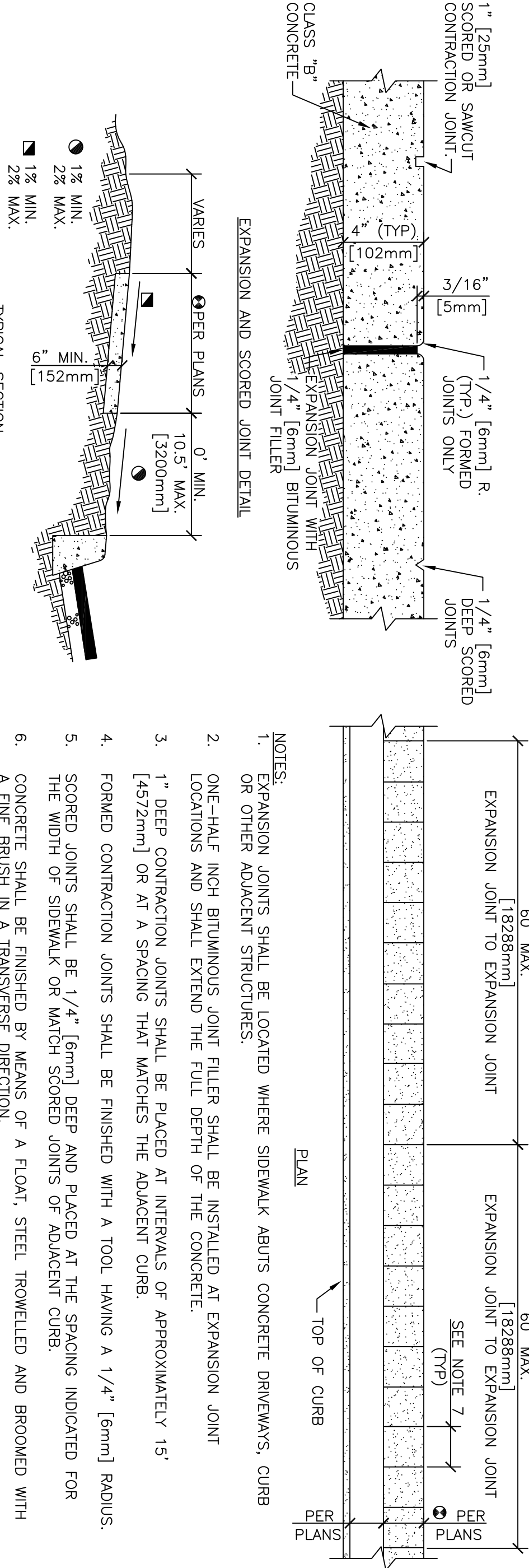
4. WALL SECTION



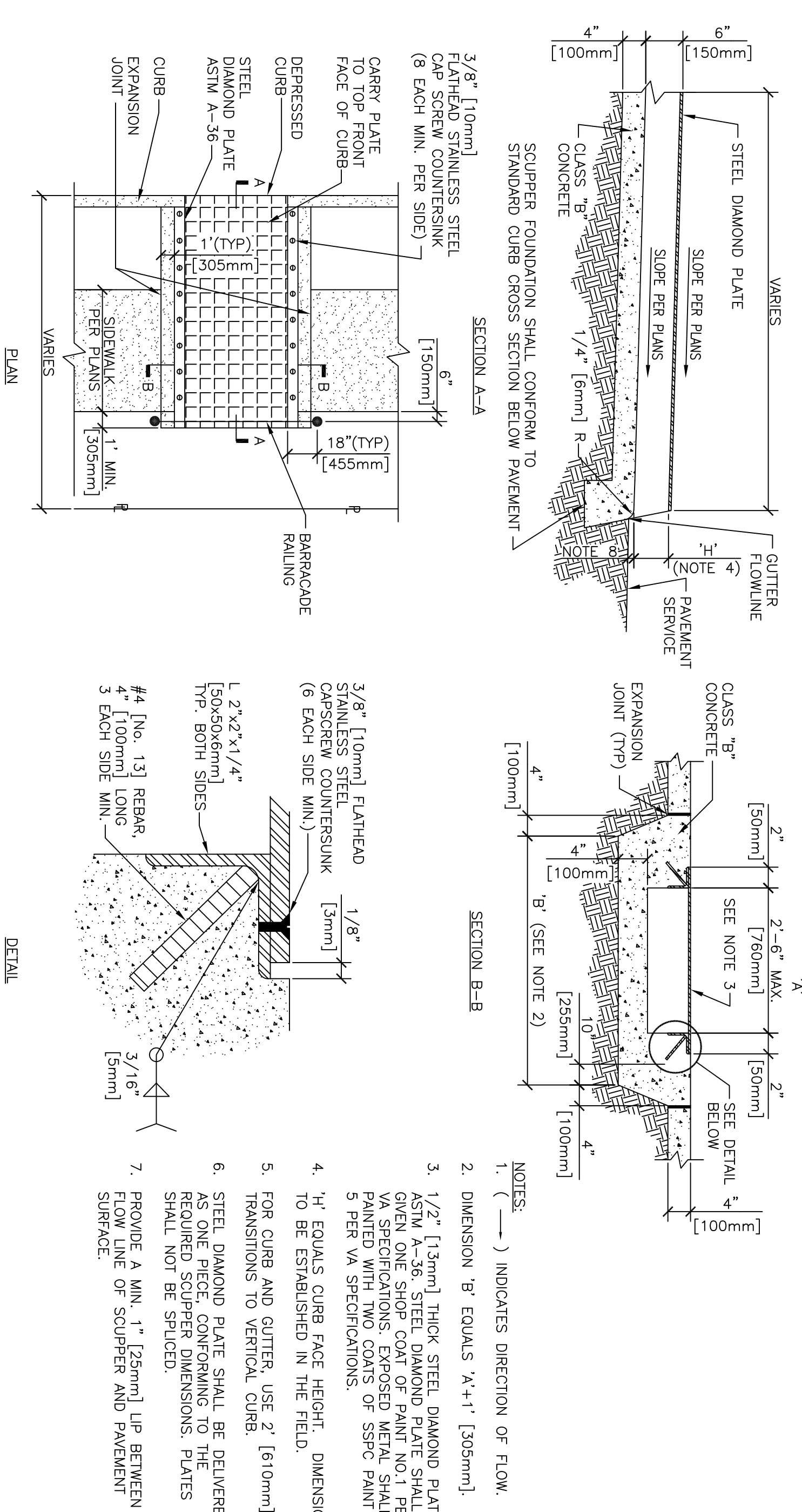
5. ROOF SECTION



6. CONCRETE SIDEWALK



7. SIDEWALK SCUPPER

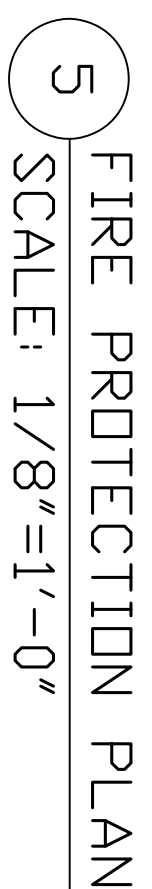
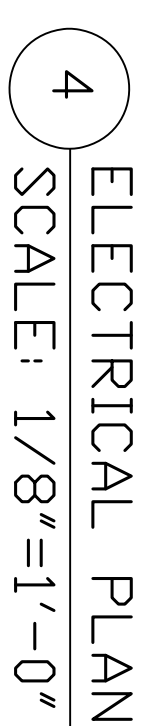
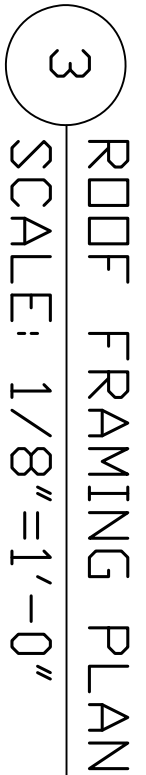
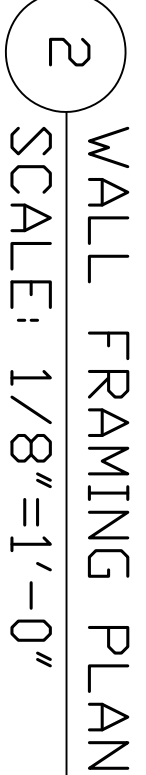
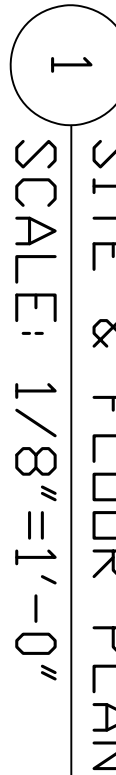


| Revisions: | Date: |
|------------|-------|
| | |
| | |
| | |
| | |
| | |

| CONSULTANT | ARCHITECT/ENGINEER OF RECORD | STAMP |
|------------|------------------------------|-------|
| | | |
| | | |
| | | |
| | | |
| | | |

| Office of Construction and Facilities Management | LEGEND AND DETAILS | Phase | Project Title |
|--|----------------------------|------------------------|--|
| VA U.S. Department of Veterans Affairs | Approved: Project Director | CONSTRUCTION DOCUMENTS | CHEYENNE VAMC MRI BUILDING - TEMPORARY COVERED WALKWAY |
| | | FULLY SPRINKLERED | |
| | | | |
| | | | |
| | | | |

| Location | Issue Date | Checked | Drawn | Drawing Number |
|--------------|------------|---------|-------|----------------|
| CHEYENNE, WY | 08/02/18 | MB | ELC | A100 |



- 7

D

| | | | |
|--|---|--|---|
| | 7 | | 8 |
|--|---|--|---|