

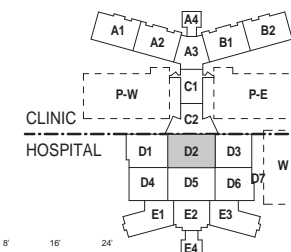
NOTES:

SHEET NOTES

- SEE SHEET G-011 FOR GENERAL ABBREVIATIONS AND ARCHITECTURAL SYMBOLS.
- REFER TO SHEETS H-LS SERIES FOR LIFE SAFETY PLANS.
- ALL INTERIOR PARTITIONS ARE TYPE 27 U.O.N. SEE SHEET H-AE5.000 SERIES FOR PARTITION TYPES.
- REFER TO EQUIPMENT PLAN SHEETS H-QH.000 SERIES FOR ADDITIONAL DIMENSIONS AND INFORMATION.
- REFER TO SHEET H-QH.101 FOR NON-MEDICAL EQUIPMENT LIST. REFER TO H-QH.102 FOR TYPICAL MOUNTING HEIGHTS AND TOILET INFORMATION.
- REFER TO SHEET H-AE6.000 SERIES FOR DOOR, FRAME AND BORROWED LITE SCHEDULES AND DETAILS.
- DIMENSIONS ARE TO COLUMN GRID, FACE OF MASONRY OR CONCRETE OR FACE OF METAL STUD U.O.N. DIMENSIONS NOTED AS "CLEAR" ARE FINISH FACE TO FINISH FACE INCLUDING ALL FINISHES SUCH AS TILE, WALL PANELS, ETC.
- SEE H-AE6.4 SERIES FOR WINDOW AND LOUVER TYPES.
- REFER TO PLUMBING PANS, H-MP.1 SERIES, FOR FLOOR DRAIN LOCATIONS.
- REFER TO SHEET H-AE5.210 FOR TYPICAL EXPANSION JOINT DETAILS.
- REFER TO SHEET H-AE5.201 THRU H-AE5.302 FOR TYPICAL PLAN DETAILS.
- SEE SHEETS H-AE4.301 FOR ENLARGED INTERIOR - TYPICAL ROOMS.
- REFER TO 1/16" AREA PLANS FOR INTERSTITIAL SPACE PLANS AND LEVEL 6 OVERALL ROOF PLANS.

KEY NOTE LEGEND

- PNEUMATIC TUBE STATION, SEE VERTICAL CIRCULATION SERIES DRAWINGS
- DUMBWATER, SEE VERTICAL CIRCULATION SERIES DRAWINGS
- 1.58 mm LEAD THICKNESS, SEE SHIELDING RECOMMENDATIONS REPORT, DIVISION 13.49.00
- LOW AIR RETURN, SEE MECH.
- EXPANSION JOINT FLOOR COVER ASSEMBLY, TYP. SIM. DETAIL 2H-AE5.210
- EXPANSION JOINT WALL TO WALL COVER ASSEMBLY, TYP. AT RATED PARTITION, SIM. DETAIL 7H-AE5.210
- EXPANSION JOINT WALL TO WALL COVER ASSEMBLY, TYP. AT UNRATED PARTITIONS, SIM. DETAIL 8H-AE5.210
- NOT USED
- 1.58 mm LEAD THICKNESS, SEE SHIELDING RECOMMENDATIONS REPORT, DIVISION 13.49.00
- ACCESS PANEL 2 HOUR RATED 24" X 30" 4" A.F.F.
- ACCESS PANEL 2 HOUR RATED 24" X 24" 8" A.F.F.
- COORDINATE LOCATION OF ACCESS POINTS IN DUCT WITH LOCATION OF ARCHITECTURAL ACCESS DOORS SHOWN HERE. EXISTING ACCESS POINTS IN DUCT MAY BE ABANDONED IN PLACE AND NEW ACCESS POINTS INSTALLED SUCH THAT ACCESS POINTS ARE REACHABLE FROM ARCHITECTURAL ACCESS DOORS.



0' 4' 8' 16' 24'
1/8" = 1'-0" GRAPHIC SCALE

KEY PLAN
AREA D, ZONE 2

BUILDING IS FULLY SPRINKLERED

No.	Description	Date
10	CPR 301	01/16/2012
11	CPR 229	02/27/2012
12	CPR 242	03/14/2012
13	CPR 316	07/20/2012
14	CPR 333	09/06/2012
15	CPR 354	11/01/2012
16	CPR 374	01/31/2013
17	CPR 380	03/01/2013

CONSULTANTS:

Professional Seals:



ARCHITECT/ENGINEERS:

RLF ELLERBE BECKET
A JOINT VENTURE
145 Lincoln Avenue
Wahler Park, Florida 32789
407 647 1039
1001 G Street, Suite 1000
Washington, D.C. 20001
202 654 9309

Drawing Title
**HOSPITAL / CLINIC
LEVEL 3, AREA D, ZONE 2
CONSTRUCTION PLAN**

Approved Project Director
Melan Arbie

Project Title
**A NEW HOSPITAL FOR
VAMC ORLANDO, FLORIDA**

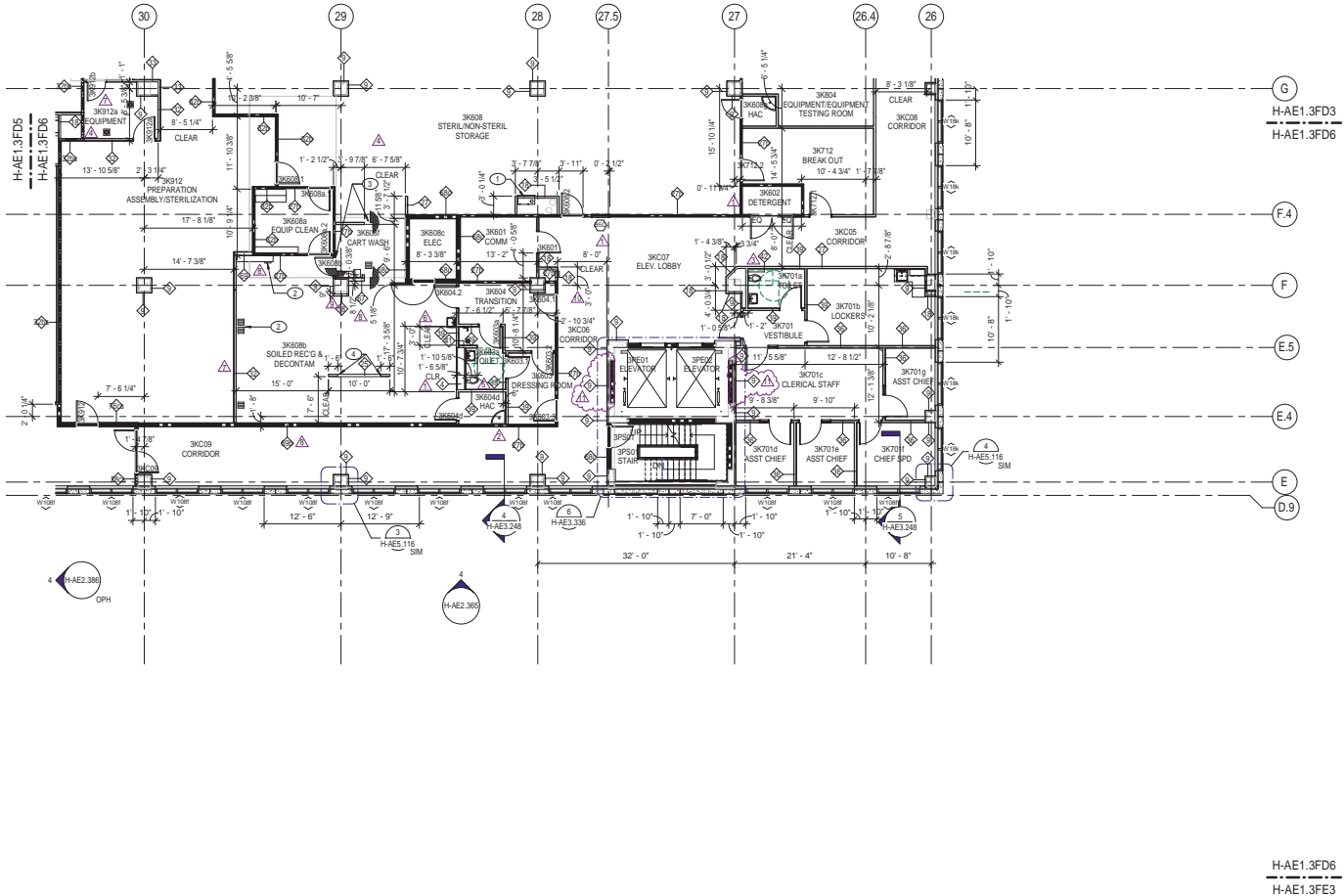
Location
Orlando, Florida
Date
04 JUNE, 2010
Checked
Checker
Drawn
EB / RLF

Project Number
675-950
Building Number
01 AND 02
Drawing Number
H-AE1.3FD2

Dwg. 0708 of 4322

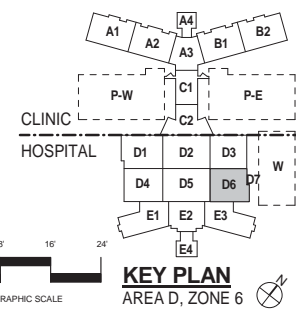
OFFICE OF
FACILITIES
MANAGEMENT





- NOTES:**
- SHEET NOTES:**
- SEE SHEET G-011 FOR GENERAL ABBREVIATIONS AND ARCHITECTURAL SYMBOLS.
 - REFER TO SHEETS H-L SERIES FOR LIFE SAFETY PLANS.
 - ALL INTERIOR PARTITIONS ARE TYPE 27 U.O.N. SEE SHEET H-AE5.000 SERIES FOR PARTITION TYPES.
 - REFER TO EQUIPMENT PLAN SHEETS H-GH.000 SERIES FOR ADDITIONAL DIMENSIONS AND INFORMATION.
 - REFER TO SHEET H-QH.101 FOR NON-MEDICAL EQUIPMENT LIST. REFER TO H-QH.102 FOR TYPICAL MOUNTING HEIGHTS AND TOILET INFORMATION.
 - REFER TO SHEET H-AE6.000 SERIES FOR DOOR, FRAME AND BORROWED LITE SCHEDULES AND DETAILS.
 - DIMENSIONS ARE TO COLUMN GRID. FACE OF MASONRY OR CONCRETE OR FACE OF METAL STUD U.O.N. DIMENSIONS NOTED AS "CLEAR" ARE FINISH FACE TO FINISH FACE INCLUDING ALL FINISHES SUCH AS TILE, WALL PANELS, ETC.
 - SEE H-AE6.4 SERIES FOR WINDOW AND LOUVER TYPES.
 - REFER TO PLUMBING PANS, H-MP1 SERIES, FOR FLOOR DRAIN LOCATIONS.
 - REFER TO SHEET H-AE5.210 FOR TYPICAL EXPANSION JOINT DETAILS.
 - REFER TO SHEET H-AE5.201 THRU H-AE5.302 FOR TYPICAL PLAN DETAILS.
 - SEE SHEETS H-AE4.301 FOR ENLARGED PLANS - TYPICAL ROOMS.
 - REFER TO 1/16" AREA PLANS FOR INTERSTITIAL SPACE PLANS AND LEVEL 6 OVERALL ROOF PLANS.

- KEY NOTE LEGEND**
- 1 PNEUMATIC TUBE STATION; SEE VERTICAL CIRCULATION SERIES DRAWINGS.
 - 2 FLOOR DRAINS, TYPICAL. SEE PLUMBING.
 - 3 INFILL EXISTING SLAB DEPRESSION, UNDER PARTITIONS & DOORS, AND PER BELMED INSTALLATION DRAWINGS.
 - 4 PARTITION OPEN FROM SOLID SURFACE SILL @ 48" A.F.F. TO CEILING.



KEY PLAN
AREA D, ZONE 6

BUILDING IS FULLY SPRINKLERED

<table><tr><th>A No.</th><th>Description</th><th>Date</th></tr><tr><td>4</td><td>CPR 083</td><td>06/10/2011</td></tr><tr><td>5</td><td>CPR 139</td><td>09/08/2011</td></tr><tr><td>6</td><td>CPR 151</td><td>09/23/2011</td></tr><tr><td>7</td><td>CPR 159</td><td>09/30/2011</td></tr><tr><td>8</td><td>CPR 180</td><td>11/17/2011</td></tr><tr><td>9</td><td>CPR 220</td><td>03/06/2012</td></tr><tr><td>10</td><td>CPR 341</td><td>10/04/2012</td></tr><tr><td>11</td><td>CPR 344</td><td>10/11/2012</td></tr></table>			A No.	Description	Date	4	CPR 083	06/10/2011	5	CPR 139	09/08/2011	6	CPR 151	09/23/2011	7	CPR 159	09/30/2011	8	CPR 180	11/17/2011	9	CPR 220	03/06/2012	10	CPR 341	10/04/2012	11	CPR 344	10/11/2012	CONSULTANTS:		Professional Seals:		ARCHITECT/ENGINEERS:		Drawing Title		Project Title		Project Number		OFFICE OF FACILITIES MANAGEMENT	
A No.	Description	Date																																									
4	CPR 083	06/10/2011																																									
5	CPR 139	09/08/2011																																									
6	CPR 151	09/23/2011																																									
7	CPR 159	09/30/2011																																									
8	CPR 180	11/17/2011																																									
9	CPR 220	03/06/2012																																									
10	CPR 341	10/04/2012																																									
11	CPR 344	10/11/2012																																									
							 145 Lincoln Avenue Winter Park, Florida 32789 407 647 1039		HOSPITAL / CLINIC LEVEL 3, AREA D, ZONE 6 CONSTRUCTION PLAN Approved Project Director 		A NEW HOSPITAL FOR VAMC ORLANDO, FLORIDA Location Orlando, Florida Date 04 JUNE, 2010		675-950 Bidding Number 01 AND 02 Drawing Number H-AE1.3FD6 Dwg. 0712 of 4322		Department of Veterans Affairs																												
A FORM 08-0231, OCT 1976																																											