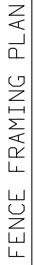
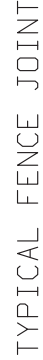
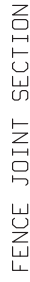
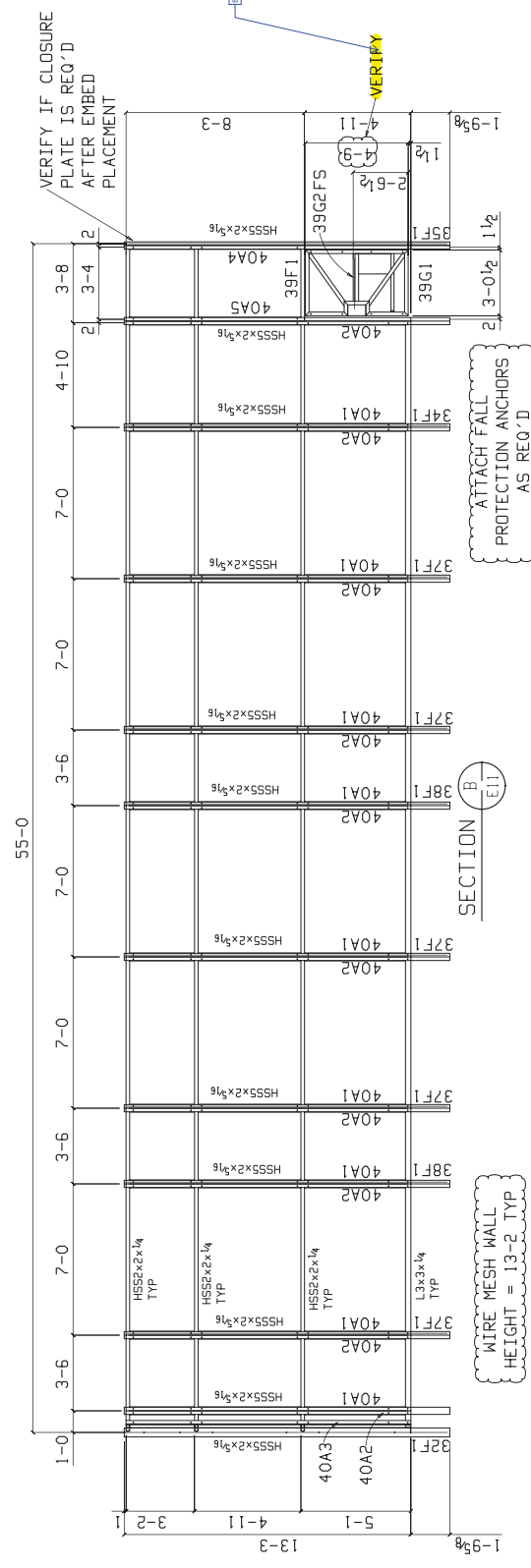
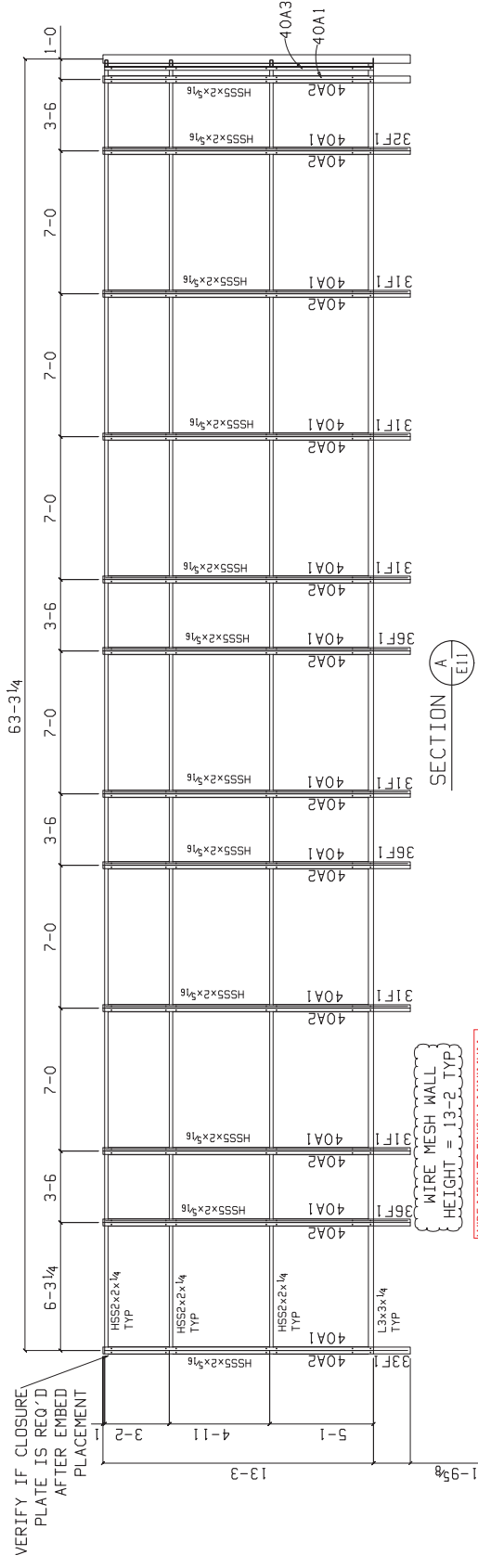


Submittal Details	CMHP
<b>Submittal Package:</b> 05 50 00 - 060.2 <b>Submittal Item:</b> EWP06-055000-056.2 <b>Specification Ref:</b> <b>Notes:</b> DNT Mental Health Courtyard <b>Wire Wall Shop Drawings</b>       	<div style="display: flex; justify-content: space-between;"> <div>           A. No Exceptions            B. Approved as noted            C. Revise &amp; Resubmit            D. Rejected            E. Submitted for Informational Purposes Only         </div> <div style="text-align: center;"> <input checked="" type="checkbox"/>  <input type="checkbox"/>  <input type="checkbox"/>  <input type="checkbox"/>  <input type="checkbox"/> </div> </div> <p>This review is for general conformance with Plans and Specifications only. Any deviations from same not clearly noted by the Preparer have not been reviewed. Review shall not constitute a complete check of detailed dimensions or count or serve to relieve the Preparer of contractual responsibility for any error or deviation from contract requirements.</p> <p>By <u>Caitlin Weber</u> Date <u>03/18/2015</u></p>
<b>StudioNOVA</b>	<b>Department of Veterans Affairs</b>
<b>Submittal Review</b> <input type="checkbox"/> APPROVED <input type="checkbox"/> APPROVED AS NOTED No resubmission necessary <input type="checkbox"/> PARTIALLY APPROVED AS NOTED Revise and resubmit as noted <input type="checkbox"/> NOT APPROVED Revise and resubmit as noted <input type="checkbox"/> NO ACTION REQUIRED For information only <input type="checkbox"/> REVIEWED ONLY FOR:    Refer to Division 1 - General Requirements in the project Specifications for explanation of the review response By: <u>Steve Kopf</u> Date: <u>April 2, 2015</u> Submittal No: <u>05 50 00 - 060.2 DNT</u> <u>MENTAL HEALTH COURTYARD WIRE</u> <u>WALL SHOP DRAWING</u>  <div style="text-align: right;">studio <b>NOVA</b></div>	



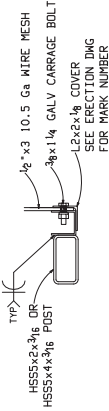
GENERAL NOTES			
1. MATERIAL: ASTM A36-PLATES, SHAPES AND BARS ASTM A500-STEEL TUBING 2. WELDS: ELECTRODES E70XX 3. PAINT: GALV. AND PAINT SEMI GLOSS BLACK EPOXY PAINT TO MATCH WIRE MESH			
OSIYO METALS, L.L.C.			
800 NORTH DAWGWOOD AVE.		PH. (910) 558-0173	
BROKEN ARROW, OK. 74012		FAX: (918) 558-1170	
SUCHS REPLACEMENT MEDICAL CENTER			
NEW ORLEANS, LOUISIANA			
STUDIO 90/VA			
PROJECT		CONTRACTOR	
LOCATION		FENCE	
ARCHITECT		SECT	
SUBJECT			
DRAWN BY			
MAH		CHECKED BY	DWG. No.
BM		DATE	SHT. E11
		7-6-2014	14-0891

DATE	REVISIONS	No.	BY
10-7-14	RE-ISSUED FOR APPROVAL	E	M&H
12-19-14	RE-ISSUED FOR APPROVAL	F	M&H
8-4-14	RE-ISSUED FOR APPROVAL	G	M&H
3-10-15	ISSUED FOR FABRICATION	0	M&H

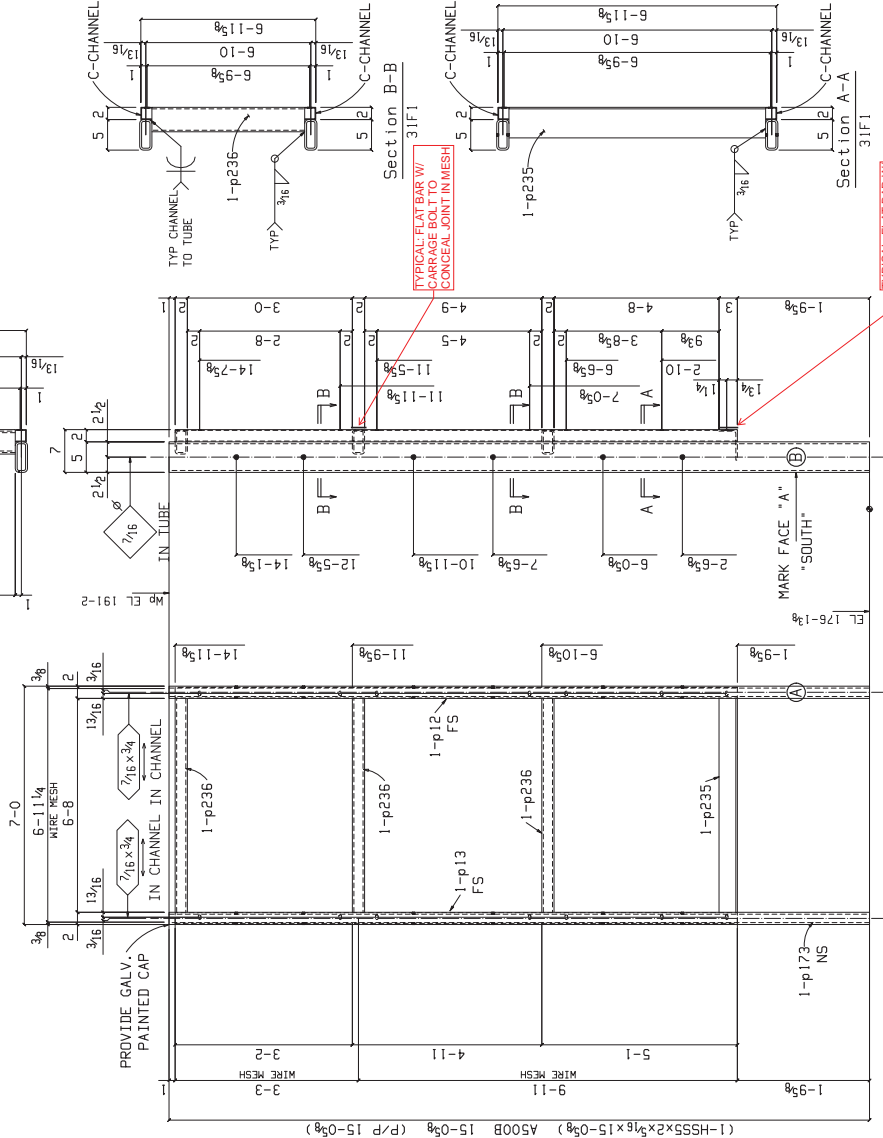


- GENERAL NOTES
1. MATERIAL-ASTM A36-PLATES, SHAPES AND BARS
  2. WELDS-ELECTRODES E70XX
  3. PAINT- GALV. AND PAINT SEMI GLOSS BLACK EPOXY PAINT TO MATCH WIRE MESH

DATE	3-10-15	BY	0	ISSUED FOR FABRICATION	M&H
DATE	8-4-14	BY	G	RE-ISSUED FOR APPROVAL	M&H
DATE	12-19-14	BY	F	RE-ISSUED FOR APPROVAL	M&H
DATE	10-7-14	BY	E	RE-ISSUED FOR APPROVAL	M&H
REVISIONS					
SUBJECT	FENCE FRAMING PLAN & SECTIONS	CHECKED BY	BM	DATE	7-16-2014
CONTRACTOR	BEC	DRAWN BY	M&H	JOB No.	14-13891
ARCHITECT	STUDIO NOVA			DWG No.	SHT E12
LOCATION	NEW ORLEANS, LOUISIANA				
PROJECT	SLVCS REPLACEMENT MEDICAL CENTER				
	1801 NORTH INDIANWOOD AVE. PH: 918/258-4717				
	BROKEN ARROW, OK 74012 FAX: 918/259-1770				
	OSIYO METALS, L.L.C.				



TYP WIRE MESH CONNECTION



6 COLUMNS 31F1

BILL OF MATERIAL

MARK	QTY	DESCRIPTION	LENGTH	REMARKS
1	1	6' x 11 1/4' WIRE MESH	15' 0"	141' AS00B
2	1	6' x 8' WIRE MESH	15' 0"	141' AS00B
3	1	6' x 8' WIRE MESH	15' 0"	141' AS00B
4	1	6' x 8' WIRE MESH	15' 0"	141' AS00B
5	1	6' x 8' WIRE MESH	15' 0"	141' AS00B
6	1	6' x 8' WIRE MESH	15' 0"	141' AS00B
7	1	6' x 8' WIRE MESH	15' 0"	141' AS00B
8	1	6' x 8' WIRE MESH	15' 0"	141' AS00B
9	1	6' x 8' WIRE MESH	15' 0"	141' AS00B
10	1	6' x 8' WIRE MESH	15' 0"	141' AS00B
11	1	6' x 8' WIRE MESH	15' 0"	141' AS00B
12	1	6' x 8' WIRE MESH	15' 0"	141' AS00B
13	1	6' x 8' WIRE MESH	15' 0"	141' AS00B
14	1	6' x 8' WIRE MESH	15' 0"	141' AS00B
15	1	6' x 8' WIRE MESH	15' 0"	141' AS00B
16	1	6' x 8' WIRE MESH	15' 0"	141' AS00B
17	1	6' x 8' WIRE MESH	15' 0"	141' AS00B
18	1	6' x 8' WIRE MESH	15' 0"	141' AS00B
19	1	6' x 8' WIRE MESH	15' 0"	141' AS00B
20	1	6' x 8' WIRE MESH	15' 0"	141' AS00B
21	1	6' x 8' WIRE MESH	15' 0"	141' AS00B
22	1	6' x 8' WIRE MESH	15' 0"	141' AS00B
23	1	6' x 8' WIRE MESH	15' 0"	141' AS00B
24	1	6' x 8' WIRE MESH	15' 0"	141' AS00B
25	1	6' x 8' WIRE MESH	15' 0"	141' AS00B
26	1	6' x 8' WIRE MESH	15' 0"	141' AS00B
27	1	6' x 8' WIRE MESH	15' 0"	141' AS00B
28	1	6' x 8' WIRE MESH	15' 0"	141' AS00B
29	1	6' x 8' WIRE MESH	15' 0"	141' AS00B
30	1	6' x 8' WIRE MESH	15' 0"	141' AS00B
31	1	6' x 8' WIRE MESH	15' 0"	141' AS00B
32	1	6' x 8' WIRE MESH	15' 0"	141' AS00B
33	1	6' x 8' WIRE MESH	15' 0"	141' AS00B
34	1	6' x 8' WIRE MESH	15' 0"	141' AS00B
35	1	6' x 8' WIRE MESH	15' 0"	141' AS00B
36	1	6' x 8' WIRE MESH	15' 0"	141' AS00B
37	1	6' x 8' WIRE MESH	15' 0"	141' AS00B
38	1	6' x 8' WIRE MESH	15' 0"	141' AS00B
39	1	6' x 8' WIRE MESH	15' 0"	141' AS00B
40	1	6' x 8' WIRE MESH	15' 0"	141' AS00B
41	1	6' x 8' WIRE MESH	15' 0"	141' AS00B
42	1	6' x 8' WIRE MESH	15' 0"	141' AS00B
43	1	6' x 8' WIRE MESH	15' 0"	141' AS00B
44	1	6' x 8' WIRE MESH	15' 0"	141' AS00B
45	1	6' x 8' WIRE MESH	15' 0"	141' AS00B
46	1	6' x 8' WIRE MESH	15' 0"	141' AS00B
47	1	6' x 8' WIRE MESH	15' 0"	141' AS00B
48	1	6' x 8' WIRE MESH	15' 0"	141' AS00B
49	1	6' x 8' WIRE MESH	15' 0"	141' AS00B
50	1	6' x 8' WIRE MESH	15' 0"	141' AS00B
51	1	6' x 8' WIRE MESH	15' 0"	141' AS00B
52	1	6' x 8' WIRE MESH	15' 0"	141' AS00B
53	1	6' x 8' WIRE MESH	15' 0"	141' AS00B
54	1	6' x 8' WIRE MESH	15' 0"	141' AS00B
55	1	6' x 8' WIRE MESH	15' 0"	141' AS00B
56	1	6' x 8' WIRE MESH	15' 0"	141' AS00B
57	1	6' x 8' WIRE MESH	15' 0"	141' AS00B
58	1	6' x 8' WIRE MESH	15' 0"	141' AS00B
59	1	6' x 8' WIRE MESH	15' 0"	141' AS00B
60	1	6' x 8' WIRE MESH	15' 0"	141' AS00B
61	1	6' x 8' WIRE MESH	15' 0"	141' AS00B
62	1	6' x 8' WIRE MESH	15' 0"	141' AS00B
63	1	6' x 8' WIRE MESH	15' 0"	141' AS00B
64	1	6' x 8' WIRE MESH	15' 0"	141' AS00B
65	1	6' x 8' WIRE MESH	15' 0"	141' AS00B
66	1	6' x 8' WIRE MESH	15' 0"	141' AS00B
67	1	6' x 8' WIRE MESH	15' 0"	141' AS00B
68	1	6' x 8' WIRE MESH	15' 0"	141' AS00B
69	1	6' x 8' WIRE MESH	15' 0"	141' AS00B
70	1	6' x 8' WIRE MESH	15' 0"	141' AS00B
71	1	6' x 8' WIRE MESH	15' 0"	141' AS00B
72	1	6' x 8' WIRE MESH	15' 0"	141' AS00B
73	1	6' x 8' WIRE MESH	15' 0"	141' AS00B
74	1	6' x 8' WIRE MESH	15' 0"	141' AS00B
75	1	6' x 8' WIRE MESH	15' 0"	141' AS00B
76	1	6' x 8' WIRE MESH	15' 0"	141' AS00B
77	1	6' x 8' WIRE MESH	15' 0"	141' AS00B
78	1	6' x 8' WIRE MESH	15' 0"	141' AS00B
79	1	6' x 8' WIRE MESH	15' 0"	141' AS00B
80	1	6' x 8' WIRE MESH	15' 0"	141' AS00B
81	1	6' x 8' WIRE MESH	15' 0"	141' AS00B
82	1	6' x 8' WIRE MESH	15' 0"	141' AS00B
83	1	6' x 8' WIRE MESH	15' 0"	141' AS00B
84	1	6' x 8' WIRE MESH	15' 0"	141' AS00B
85	1	6' x 8' WIRE MESH	15' 0"	141' AS00B
86	1	6' x 8' WIRE MESH	15' 0"	141' AS00B
87	1	6' x 8' WIRE MESH	15' 0"	141' AS00B
88	1	6' x 8' WIRE MESH	15' 0"	141' AS00B
89	1	6' x 8' WIRE MESH	15' 0"	141' AS00B
90	1	6' x 8' WIRE MESH	15' 0"	141' AS00B
91	1	6' x 8' WIRE MESH	15' 0"	141' AS00B
92	1	6' x 8' WIRE MESH	15' 0"	141' AS00B
93	1	6' x 8' WIRE MESH	15' 0"	141' AS00B
94	1	6' x 8' WIRE MESH	15' 0"	141' AS00B
95	1	6' x 8' WIRE MESH	15' 0"	141' AS00B
96	1	6' x 8' WIRE MESH	15' 0"	141' AS00B
97	1	6' x 8' WIRE MESH	15' 0"	141' AS00B
98	1	6' x 8' WIRE MESH	15' 0"	141' AS00B
99	1	6' x 8' WIRE MESH	15' 0"	141' AS00B
100	1	6' x 8' WIRE MESH	15' 0"	141' AS00B

GENERAL NOTES

1. MATERIAL: ASTM A36-PLATES, SHAPES AND BARS  
ASTM A500-STEEL TUBING
2. WELDS: ELECTRODES E70XX
3. PAINT: GALV. AND PAINT SEMI GLOSS BLACK EPOXY PAINT TO MATCH WIRE MESH

OSIYO METALS, L.L.C.

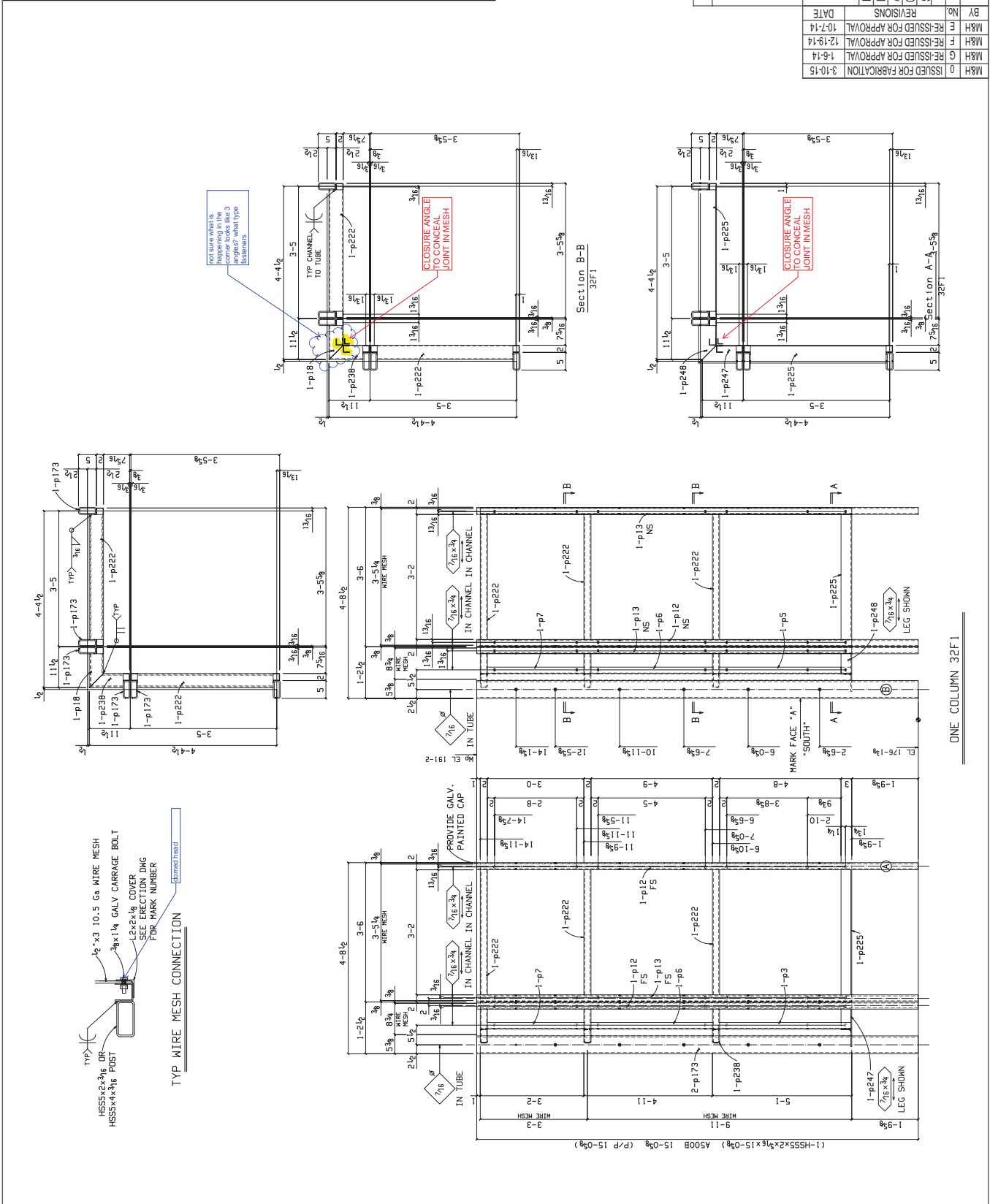
1801 NORTH INDIANWOOD AVE. PH: (918) 258-4717  
BROKEN ARROW, OK 74012 FAX: (918) 259-1170

PROJECT	SLVHGS REPLACEMENT MEDICAL CENTER
LOCATION	STUDIO NOVA
ARCHITECT	ISEC
CONTRACTOR	ISEC
SUBJECT	FENCE DETAILS

DATE	BY	NO.	REVISIONS
3-10-15	M&H	0	ISSUED FOR FABRICATION
6-14-14	M&H	1	RE-ISSUED FOR APPROVAL
12-19-14	M&H	2	RE-ISSUED FOR APPROVAL
10-7-14	M&H	3	RE-ISSUED FOR APPROVAL

DRAWN BY	CHECKED BY	DATE	JOB No.	DWG No.
M&H	BM	7-16-2014	14-13891	SHT. 31

BILL OF MATERIAL				
ROW	QTY	DESCRIPTION	LENGTH	REMARKS
257	1	8x16 GALV. PLATE	15'-0"	157 AS00B
258	1	8x16 GALV. PLATE	15'-0"	157 AS00B
259	1	8x16 GALV. PLATE	15'-0"	157 AS00B
260	1	8x16 GALV. PLATE	15'-0"	157 AS00B
261	1	8x16 GALV. PLATE	15'-0"	157 AS00B
262	1	8x16 GALV. PLATE	15'-0"	157 AS00B
263	1	8x16 GALV. PLATE	15'-0"	157 AS00B
264	1	8x16 GALV. PLATE	15'-0"	157 AS00B
265	1	8x16 GALV. PLATE	15'-0"	157 AS00B
266	1	8x16 GALV. PLATE	15'-0"	157 AS00B
267	1	8x16 GALV. PLATE	15'-0"	157 AS00B
268	1	8x16 GALV. PLATE	15'-0"	157 AS00B
269	1	8x16 GALV. PLATE	15'-0"	157 AS00B
270	1	8x16 GALV. PLATE	15'-0"	157 AS00B
271	1	8x16 GALV. PLATE	15'-0"	157 AS00B
272	1	8x16 GALV. PLATE	15'-0"	157 AS00B
273	1	8x16 GALV. PLATE	15'-0"	157 AS00B
274	1	8x16 GALV. PLATE	15'-0"	157 AS00B
275	1	8x16 GALV. PLATE	15'-0"	157 AS00B
276	1	8x16 GALV. PLATE	15'-0"	157 AS00B
277	1	8x16 GALV. PLATE	15'-0"	157 AS00B
278	1	8x16 GALV. PLATE	15'-0"	157 AS00B
279	1	8x16 GALV. PLATE	15'-0"	157 AS00B
280	1	8x16 GALV. PLATE	15'-0"	157 AS00B
281	1	8x16 GALV. PLATE	15'-0"	157 AS00B
282	1	8x16 GALV. PLATE	15'-0"	157 AS00B
283	1	8x16 GALV. PLATE	15'-0"	157 AS00B
284	1	8x16 GALV. PLATE	15'-0"	157 AS00B
285	1	8x16 GALV. PLATE	15'-0"	157 AS00B
286	1	8x16 GALV. PLATE	15'-0"	157 AS00B
287	1	8x16 GALV. PLATE	15'-0"	157 AS00B
288	1	8x16 GALV. PLATE	15'-0"	157 AS00B
289	1	8x16 GALV. PLATE	15'-0"	157 AS00B
290	1	8x16 GALV. PLATE	15'-0"	157 AS00B
291	1	8x16 GALV. PLATE	15'-0"	157 AS00B
292	1	8x16 GALV. PLATE	15'-0"	157 AS00B
293	1	8x16 GALV. PLATE	15'-0"	157 AS00B
294	1	8x16 GALV. PLATE	15'-0"	157 AS00B
295	1	8x16 GALV. PLATE	15'-0"	157 AS00B
296	1	8x16 GALV. PLATE	15'-0"	157 AS00B
297	1	8x16 GALV. PLATE	15'-0"	157 AS00B
298	1	8x16 GALV. PLATE	15'-0"	157 AS00B
299	1	8x16 GALV. PLATE	15'-0"	157 AS00B
300	1	8x16 GALV. PLATE	15'-0"	157 AS00B







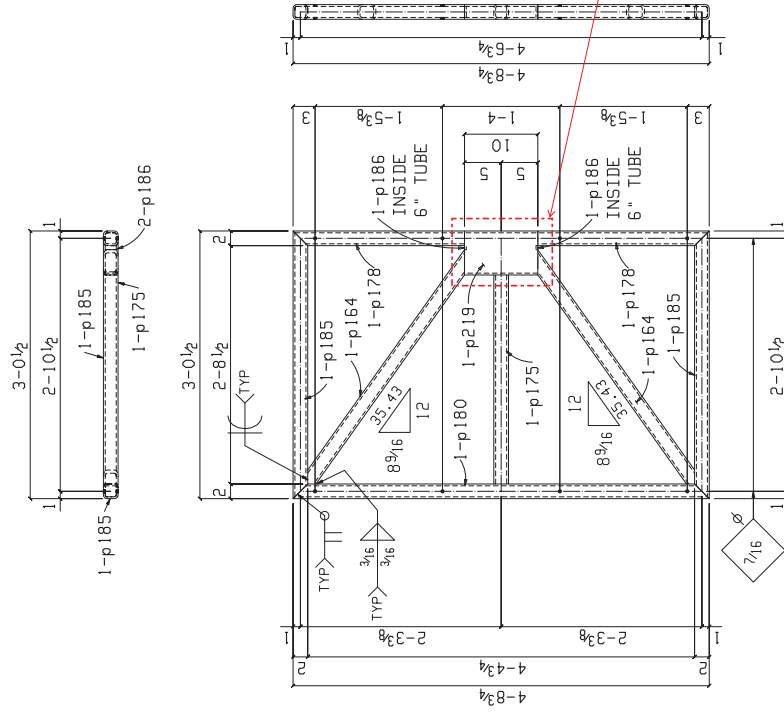
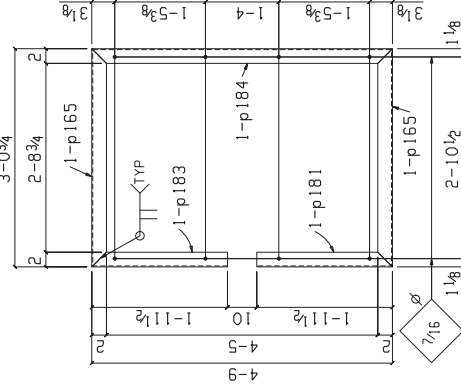
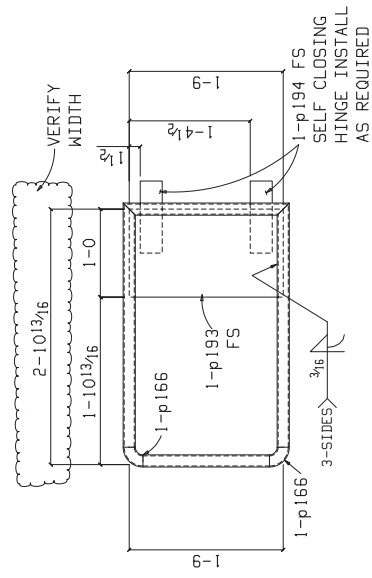












M&H	0	ISSUED FOR FABRICATION	3-10-15
M&H	G	RE-ISSUED FOR APPROVAL	1-6-14
M&H	F	RE-ISSUED FOR APPROVAL	12-19-14
M&H	E	RE-ISSUED FOR APPROVAL	10-7-14
BY	NO.	REVISIONS	DATE

M&H	0	ISSUED FOR FABRICATION	3-10-15
M&H	G	RE-ISSUED FOR APPROVAL	1-6-14
M&H	F	RE-ISSUED FOR APPROVAL	12-19-14
M&H	E	RE-ISSUED FOR APPROVAL	10-7-14
BY	NO.	REVISIONS	DATE

M&H	0	ISSUED FOR FABRICATION	3-10-15
M&H	G	RE-ISSUED FOR APPROVAL	1-6-14
M&H	F	RE-ISSUED FOR APPROVAL	12-19-14
M&H	E	RE-ISSUED FOR APPROVAL	10-7-14
BY	NO.	REVISIONS	DATE

M&H	0	ISSUED FOR FABRICATION	3-10-15
M&H	G	RE-ISSUED FOR APPROVAL	1-6-14
M&H	F	RE-ISSUED FOR APPROVAL	12-19-14
M&H	E	RE-ISSUED FOR APPROVAL	10-7-14
BY	NO.	REVISIONS	DATE

M&H	0	ISSUED FOR FABRICATION	3-10-15
M&H	G	RE-ISSUED FOR APPROVAL	1-6-14
M&H	F	RE-ISSUED FOR APPROVAL	12-19-14
M&H	E	RE-ISSUED FOR APPROVAL	10-7-14
BY	NO.	REVISIONS	DATE

M&H	0	ISSUED FOR FABRICATION	3-10-15
M&H	G	RE-ISSUED FOR APPROVAL	1-6-14
M&H	F	RE-ISSUED FOR APPROVAL	12-19-14
M&H	E	RE-ISSUED FOR APPROVAL	10-7-14
BY	NO.	REVISIONS	DATE

M&H	0	ISSUED FOR FABRICATION	3-10-15
M&H	G	RE-ISSUED FOR APPROVAL	1-6-14
M&H	F	RE-ISSUED FOR APPROVAL	12-19-14
M&H	E	RE-ISSUED FOR APPROVAL	10-7-14
BY	NO.	REVISIONS	DATE

M&H	0	ISSUED FOR FABRICATION	3-10-15
M&H	G	RE-ISSUED FOR APPROVAL	1-6-14
M&H	F	RE-ISSUED FOR APPROVAL	12-19-14
M&H	E	RE-ISSUED FOR APPROVAL	10-7-14
BY	NO.	REVISIONS	DATE

M&H	0	ISSUED FOR FABRICATION	3-10-15
M&H	G	RE-ISSUED FOR APPROVAL	1-6-14
M&H	F	RE-ISSUED FOR APPROVAL	12-19-14
M&H	E	RE-ISSUED FOR APPROVAL	10-7-14
BY	NO.	REVISIONS	DATE

M&H	0	ISSUED FOR FABRICATION	3-10-15
M&H	G	RE-ISSUED FOR APPROVAL	1-6-14
M&H	F	RE-ISSUED FOR APPROVAL	12-19-14
M&H	E	RE-ISSUED FOR APPROVAL	10-7-14
BY	NO.	REVISIONS	DATE

M&H	0	ISSUED FOR FABRICATION	3-10-15
M&H	G	RE-ISSUED FOR APPROVAL	1-6-14
M&H	F	RE-ISSUED FOR APPROVAL	12-19-14
M&H	E	RE-ISSUED FOR APPROVAL	10-7-14
BY	NO.	REVISIONS	DATE

M&H	0	ISSUED FOR FABRICATION	3-10-15
M&H	G	RE-ISSUED FOR APPROVAL	1-6-14
M&H	F	RE-ISSUED FOR APPROVAL	12-19-14
M&H	E	RE-ISSUED FOR APPROVAL	10-7-14
BY	NO.	REVISIONS	DATE

M&H	0	ISSUED FOR FABRICATION	3-10-15
M&H	G	RE-ISSUED FOR APPROVAL	1-6-14
M&H	F	RE-ISSUED FOR APPROVAL	12-19-14
M&H	E	RE-ISSUED FOR APPROVAL	10-7-14
BY	NO.	REVISIONS	DATE

M&H	0	ISSUED FOR FABRICATION	3-10-15
M&H	G	RE-ISSUED FOR APPROVAL	1-6-14
M&H	F	RE-ISSUED FOR APPROVAL	12-19-14
M&H	E	RE-ISSUED FOR APPROVAL	10-7-14
BY	NO.	REVISIONS	DATE

M&H	0	ISSUED FOR FABRICATION	3-10-15
M&H	G	RE-ISSUED FOR APPROVAL	1-6-14
M&H	F	RE-ISSUED FOR APPROVAL	12-19-14
M&H	E	RE-ISSUED FOR APPROVAL	10-7-14
BY	NO.	REVISIONS	DATE

M&H	0	ISSUED FOR FABRICATION	3-10-15
M&H	G	RE-ISSUED FOR APPROVAL	1-6-14
M&H	F	RE-ISSUED FOR APPROVAL	12-19-14
M&H	E	RE-ISSUED FOR APPROVAL	10-7-14
BY	NO.	REVISIONS	DATE

OSIYO METALS, L.L.C.

1801 NORTH INDIANWOOD AVE.  
BROKEN ARROW, OK 74012  
PH: (918) 258-4717  
FAX: (918) 259-1170

PROJECT	SLVHCS REPLACEMENT MEDICAL CENTER
---------	-----------------------------------

PROJECT	SLVHCS REPLACEMENT MEDICAL CENTER
---------	-----------------------------------

PROJECT	SEVICS REFACEMENT MEDICAL CENTER
LOCATION	NEW ORLEANS, LOUISIANA

LOCATION	NEW ORLEANS, LOUISIANA
ARCHITECT	STUDIO NOVA

CONTRACTOR	STUDIO NOVA
ISFC	

CONTRACTOR	ISEC
SUBJECT	FENCE DETAILS

SUBJECT	REFERENCE DETAILS

DRAWN BY	CHECKED BY	DATE	JOB NO.
----------	------------	------	---------

DRAWN BY	CHECKED BY	DATE	JOB NO.
M&H	BM	7-16-2014	14-13991

M&H	BW	7-16-2014	14-13991
-----	----	-----------	----------

## GENERAL NOTES

1. MATERIAL: ASTM A36-PLATES, SHAPES AND BARS

1. MATERIAL. ASTM A36 PLATES, SHAPES AND BARS  
ASTM A500-STEEL TUBING

2. WELDS: ELECTRODES E70XX

2. WELDS: ELECTRODES E70XX  
3. PAINT: GALV. AND PAINT SEMI GLOSS BLACK

3. PAINT: GALV. AND PAINT SEMI GLOSS BLACK  
EPOXY PAINT TO MATCH WIRE MESH

BILL OF MATERIAL				
MARK	QTY	DESCRIPTION	LENGTH	REMARKS
3561		ONE GATE		131
3562		1 HSSX-2-4	0 10	10 HSSOB
3563		1 HSSX-2-4	4 8 1/4	24 HSSOB
3564		2 HSSX-2-4	3 2 1/4	31 HSSOB
3565		2 HSSX-2-4	3 0 1/4	31 HSSOB
3566		1 HSSX-2-4	2 4 1/4	17 HSSOB
3567		1 HSSX-2-4	1 1 1/4	20 HSSOB
3568		2 PLAIN	0 1 1/4	0 HSS
3569				
3570				
3571		ONE SAFETY GATE		42
3572		1 PIPE 1/4 STD	5 0	20 HSS
3573		2 1/4 STD ELBOW	1 5	10 HSS
3574		1 PLAIN IP	0 5 1/4	4 HSS
3575		2 SLOD CLIMBING FRAME		
3576				
3577		ONE FRAME	4 5	24
3578		1 1/2x2-4	3 0 1/4	10 HSS
3579		2 1/2x2-4	1 11 1/4	3 HSS
3580		1 1/2x2-4	1 11 1/4	3 HSS

