

EAGLE GROUP
Profit from the Eagle Advantage!

Electronic Eye Hand Sinks—AC Power

HSA-10-FE **HSA-10-FOE** **HSA-10-FA-PE**

HSA-10-FDPE **HSA-10-FODPE** **HSA-10-FDPEE**

Electronic Eye Hand Sinks—AC Power

Note: Installation of all electronic eye hand sinks — Water temperature is controlled by mixing hot and cold water via user supplied mixing valve prior to subject 1" (20mm) drain connection.
Hand sinks with battery-powered faucet, battery-powered soap dispenser and waste receptacle available.

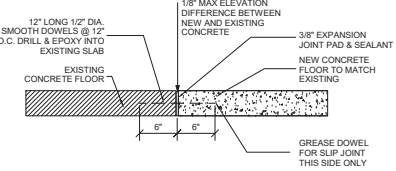
Model #	Includes	Standard size width x height x depth	Standard size width x height x depth	Weight lb
HSA-10-FE	Standard, electronic eye, standard drain	10" x 13" x 6" 248 x 343 x 173	10" x 13" x 6" 276 x 400 x 204	8.5
HSA-10-FOE	Standard, electronic eye, standard drain, soap dispenser, soap dispenser	10" x 14" x 9" 254 x 358 x 127	10" x 14" x 9" 276 x 400 x 224	13
HSA-10-FA-PE	Standard, electronic eye, standard drain, soap dispenser, soap dispenser, soap dispenser, soap dispenser	10" x 13" x 6" 248 x 343 x 173	10" x 13" x 6" 276 x 400 x 204	10.7
HSA-10-FDPE	Standard, electronic eye, standard drain, soap dispenser, soap dispenser, soap dispenser, soap dispenser	10" x 13" x 6" 248 x 343 x 173	10" x 13" x 6" 276 x 400 x 204	10.7
HSA-10-FODPE	Standard, electronic eye, standard drain, soap dispenser, soap dispenser, soap dispenser, soap dispenser	10" x 14" x 9" 254 x 358 x 127	10" x 14" x 9" 276 x 400 x 224	14.1
HSA-10-FDPEE	Standard, electronic eye, standard drain, soap dispenser, soap dispenser, soap dispenser, soap dispenser	10" x 14" x 9" 254 x 358 x 127	10" x 14" x 9" 276 x 400 x 224	15.8
HSA-10-FDPEE	Standard, electronic eye, standard drain, soap dispenser, soap dispenser, soap dispenser, soap dispenser	10" x 13" x 6" 248 x 343 x 173	10" x 13" x 6" 276 x 400 x 204	10.8

EAGLE GROUP
130 Industrial Boulevard, Clayton, DE 19938-0000 USA
Phone: 302-653-3000 • Fax: 302-653-3000
www.eaglegrp.com

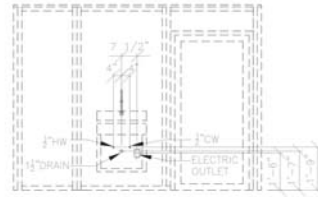
Frederick Division: Phone 800-681-6686
NYC-Retail Display Division: Phone 800-631-5100

Printed in U.S.A.
©2018 Eagle Group
Rev. 06/14

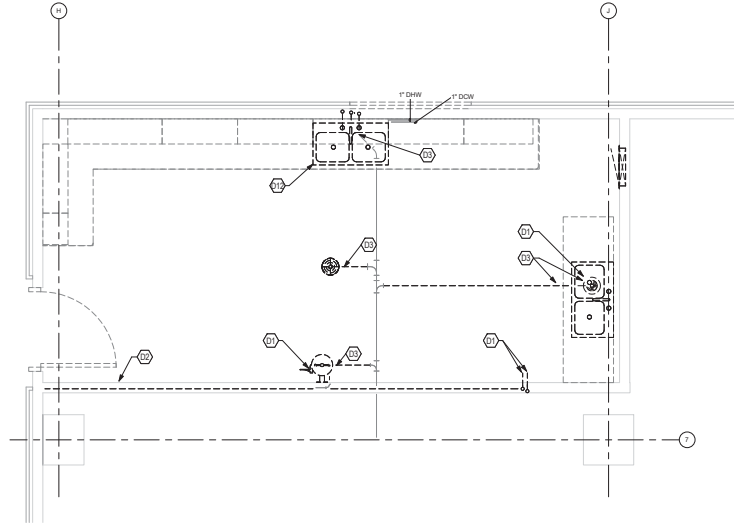
State where installation is required: **CA** (California) **IL** (Illinois) **IN** (Indiana) **MD** (Maryland) **MI** (Michigan) **MO** (Missouri) **NE** (Nebraska) **NH** (New Hampshire) **NJ** (New Jersey) **NY** (New York) **OH** (Ohio) **PA** (Pennsylvania) **RI** (Rhode Island) **SC** (South Carolina) **TX** (Texas) **VA** (Virginia) **WY** (Wyoming)



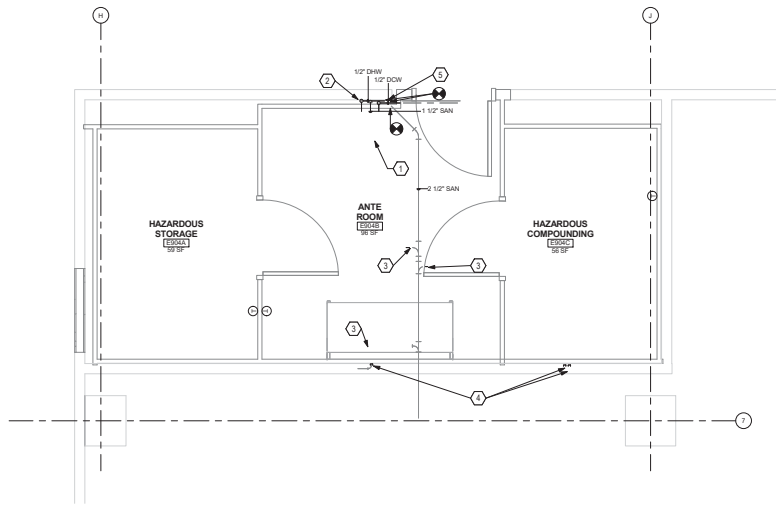
4 CONCRETE PATCH DETAIL
1/2" x 1/2"



3 DETAIL - SINK ROUGH-IN
1/2" x 1/2"



1 09 NINTH FLOOR PLUMBING PLAN - DEMOLITION PLAN
1/2" x 1/2"



2 09 NINTH FLOOR PLUMBING PLAN - NEW
1/2" x 1/2"

GENERAL NOTES

- CONTRACTOR TO COORDINATE WITH ROOF INSTALLATION WARRANTY REQUIREMENTS FOR ANY MODIFICATIONS TO ROOFING TO ENSURE NO VIOLATIONS OCCUR OF THE WARRANTY.
- CONTRACTOR TO OBTAIN A CROPPED ROOFING INSPECTION REPORT AND REQUIREMENTS OF THE INSTALLED ROOF. ALL WARRANTY VIOLATIONS WILL BE REQUIRED TO BE CORRECTED PRIOR TO CLOSING OUT ROOF AND/OR ROOFING IMPACTED BY WORK INCLUDE E.G.
- CONTRACTOR TO VALIDATE AND VERIFY ALL FIRE RATED ANCHOR SMOKE RATED WALLS AND ASSEMBLIES INSTALLED IN WORK AREA. PROVIDE ALL PIPING PENETRATIONS OF FIRE SMOKE AND FULL HEIGHT WALLS SHALL BE CALLED OUT TO THE ADJACENT STRUCTURE BY MEANS OF A.L. APPROVED FIRE PROOF CALKING MATERIAL. SEE MECHANICAL AND PLUMBING DRAWINGS FOR ADDITIONAL INFORMATION.
- CONTRACTOR SHALL COORDINATE ALL PIPING, PLUMBING, AND CONDUIT PIPING WITH STRUCTURAL, MECHANICAL, AND ELECTRICAL SYSTEMS AND SHALL PROVIDE NECESSARY OFFSETS TO AVOID CONFLICTS AND TO MAINTAIN REQUIRED EQUIPMENT ACCESS AND BE AVAILABLE.
- EXISTING CONDITIONS ARE BASED ON EXISTING PLANS AND FIELD VERIFICATION WHERE FORMING ACTUAL CONDITIONS MAY DIFFER FROM THOSE REQUIRED. CONTRACTOR SHALL VERIFY IN ADVANCE THE LOCATION AND CONDITION OF THOSE EXISTING SYSTEMS SHOWN TO BE MODIFIED OR REMOVED. CONTRACTOR TO NOTIFY ARCHITECT SHOULD CONDITIONS BE FOUND TO DIFFER SIGNIFICANTLY FROM CONSTRUCTION DOCUMENTS.
- CONTRACTOR TO COORDINATE ALL NEW EQUIPMENT LOCATION WITH ALL TRADES PRIOR TO INSTALLATION.
- CONTRACTOR TO PROVIDE GALVANIC PROTECTION AS REQUIRED AT CONNECTIONS BETWEEN ALL DRAINABLE METALS.
- ANY FLOOR, WALL, OR CEILING CUTTING OR FILLING THAT IS REQUIRED TO COMPLETE THIS PROJECT, THE CONTRACTOR SHALL PATCH AND PAINT AND RETURN TO MATCH EXISTING CONDITIONS AND FINISHES.
- CONTRACTOR TO PROVIDE EROSION CONTROL ON ALL NEW EXPOSED EXTERIOR PIPE PENETRATIONS AND SEAL COMPLETE.
- ANY LANDSCAPE, HARDSCAPE, FUTURE, SIGNAGE AND SYSTEMS OR PEDESTRIAN CONTROL DEVICES WITHIN THE TEMPORARY ACCESSIBLE PATHWAY SHALL BE PROTECTED IN PLACE OR TEMPORARILY RELOCATED AS NECESSARY FOR CONTINUED UNINTERRUPTED OPERATION, ACCESS, MAINTENANCE AND/OR VISIBILITY.

DEMOLITION KEYNOTES

- EXISTING PLUMBING FIXTURE TO BE REMOVED, PIPING TO BE CAPPED OUTSIDE OF THIS FABRICATED CEILING ROOM.
- EXISTING ACCESS PANEL TO BE REMOVED AND WALL PATCHED FOR SPECIFICATIONS. CAP EXISTING NO PIPING PER SPECIFICATIONS. RECOVERY TO SYSTEM.
- EXISTING CHASE LINE TO BE REMOVED AND CAPPED BELOW FLOOR LEVEL. PATCH CONCRETE FLOOR PER DETAIL, THIS SHEET.
- EXISTING PLUMBING FIXTURE TO BE REMOVED, SUPPLY AND DRAIN PIPING TO BE RECONFIGURED TO BETTER NEW COMBINATION DRAIN/VENT/PEDESTAL UNIT.

KEYNOTES

- HANDS FREE STAINLESS STEEL SINK WITH SOAP DISPENSER, MIRROR, EAGLE, HSA-10-FA-PE WITH EYE WASH.
- NEW PLUMBING CHASE, ACCESS PANEL AND HOOKUPS BY CLEAN AIR. SEE PLUMBING ROUGH-IN DETAIL, THIS SHEET. COORDINATE ADDITIONAL REQUIREMENTS WITH G.S.
- CAP EXISTING CHASE LINE BELOW FLOOR.
- CAP EXISTING DOMESTIC WATER LINES ON OPPOSITE SIDE OF PARTITION. COORDINATE LOCATION AND ACCESS METHOD.
- PROVIDE NEW 1" DOW, 1" DOW AND 1" DOW VENT TO LOCATION DETERMINED BY G.S. COORDINATE PENETRATIONS INTO THE ENGINEERED CLEAN ROOM.

Revisions:	Date:

CONSULTANT

ARCHITECT/ENGINEER OF RECORD

AE
Triple C - The AAE Group
4401 Atlantic Avenue, Suite 200
Long Beach, CA 90807
(562) 452-7175
Mal Perkins

ARCHITECT/ENGINEER OF RECORD
Triple C - The AAE Group
4401 Atlantic Avenue, Suite 200
Long Beach, CA 90807
(562) 452-7175
Mal Perkins

STAMP



Office of Construction and Facilities Management

Office of Construction and Facilities Management
U.S. Department of Veterans Affairs

Drawing Title

PLUMBING PLANS
Approved: _____

Phase

100% CONSTRUCTION DOCUMENTS
FULLY SPRINKLERED

Project Title

Clean Room Site Prep AE Design
Location: 5901 E 7TH ST, LONG BEACH, CA 90822
Issue Date: 06/28/2018
Checked: _____
Drawn: _____

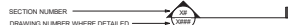
Project Number

800-18-200
Building Number: B126
Drawing Number: P-101

ABBREVIATIONS

AD	ACCESS DOOR
AQU	AIR CONDITIONING UNIT
ACU	ACCESS DOOR
AF	ABOVE FINISHED FLOOR
AHJ	AIR HANDLING UNIT
AL	ACOUSTIC LINING
BHP	BRAKE HORSEPOWER
BSD	BOTTOM OF DUCT
BOP	BOTTOM OF PIPE
BTU	BRITISH THERMAL UNIT
BTUH	BTU PER HOUR
CA	COMPRESSED AIR
CD	CONDENSATE DRAIN
CFM	CUBIC FEET PER MINUTE
CO	CLEANOUT
CONT.	CONTINUATION
D	DRAIN
DX	DIRECT EXPANSION
ENT	ENTERING
EXH	EXHAUST
EMCS	ENERGY MANAGEMENT CONTROL SYSTEM
F	DEGREES FAHRENHEIT
FB	FLAT BOTTOM
FCO	FLOOR CLEANOUT
FCL	FAN COIL UNIT
FO	FLOOR DRAIN
FG	FILTER GAUGE
FLEX	FLEXIBLE
FM	FEET PER MINUTE
FS	FLOOR SINK
FT	FEET
FT	FEET
GPM	GALLONS PER HOUR
GPM	GALLONS PER MINUTE
HB	HOSE BIB
HD	HAND DAMPER (VOLUME DAMPER)
HEPA	HIGH EFFICIENCY PARTICULATE AIR (FILTER)
I	INCHES
KW	KILOWATT
KWH	KILOWATT HOUR
MA	MAIN AIR (CONTROLS)
MCC	MOTOR CONTROL CENTER
NA	NOT APPLICABLE
NC	NOT IN CONTRACT
NO.	NUMBER (QUANTITY)
OA	OUTSIDE AIR
OB	OPPOSED BLADE DAMPER
PRV	PRESSURE REDUCING VALVE
PSG	POUNDS PER SQUARE INCH GAGE
QTY	QUANTITY
QUAD	QUADRANT
RA	RETURN AIR
RH	RELATIVE HUMIDITY
RPM	REVOLUTIONS PER MINUTE
SCD	SMOKE CONTROL DAMPER
SP	STATIC PRESSURE (INCHES OF WATER)
SDV	SINGLE DUCT VARIABLE VOLUME
ST	STEAM TRAP
TOPT	TOP OF PIPE TRAP/PIPE
TP	TOTAL PRESSURE (INCHES OF WATER)
TRP	TYPICAL
V	VOLTS
VAC	VOLTS, ALTERNATING CURRENT
VAV	VARIABLE AIR VOLUME
VEL	VELOCITY
VTR	VENT THRU ROOF
WCD	WALL CLEANOUT
WHD	WALL HYDRANT

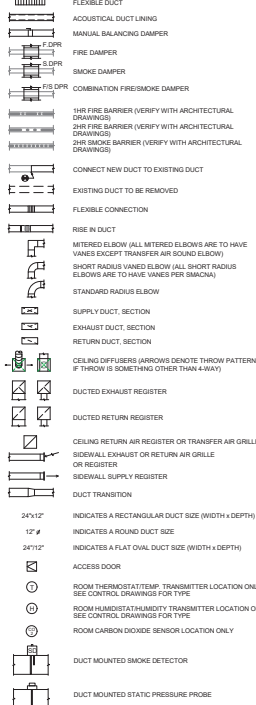
SECTION SYMBOLS



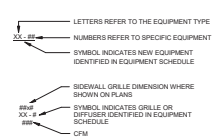
DETAIL REFERENCE



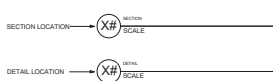
DUCTWORK SYMBOLS



EQUIPMENT SYMBOLS

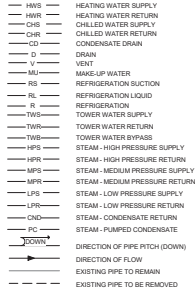


SECTION AND DETAIL TITLES

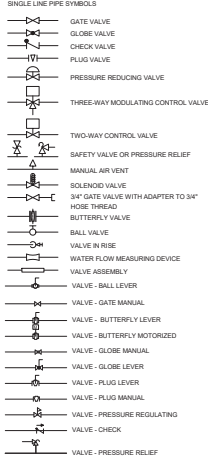


MECHANICAL SYMBOL LEGEND

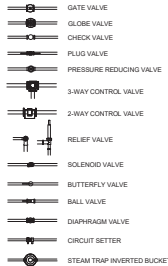
PIPING SYMBOLS



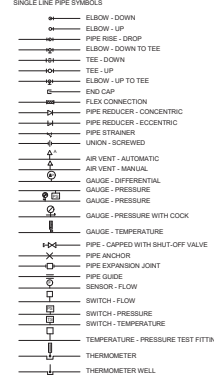
VALVE SYMBOLS



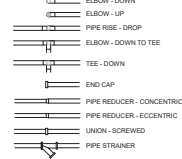
DOUBLE LINE PIPE SYMBOLS



FITTING SYMBOLS



DOUBLE LINE PIPE SYMBOLS



NOTE: NOT ALL ABBREVIATIONS AND SYMBOLS APPLY TO THIS PROJECT.

GENERAL NOTES:

- ALL PIPING AND DUCTS IN FINISHED ROOMS OR SPACES SHALL BE CONCEALED IN PARTED CHASES OR SUSPENDED CEILINGS, UNLESS OTHERWISE NOTED.
- PROVIDE ACCESS PANELS OR DOORS IN INACCESSIBLE CEILINGS AND/OR CHASES FOR ALL VALVES, TRAPS, DAMPERS, CLEANOUTS, COILS, FANS, CONTROLS, ETC. THEY SHALL BE TURNED UNDER DIVISION 5 AND INSTALLED UNDER THE ARCHITECTURAL SPECIFICATION. ACCESS DOOR RATING SHALL MATCH CLASSIFICATION OF WALL AND CEILING FIRE RATING.
- WATER PIPE CONNECTIONS TO WATER COILS SHALL BE MADE SO THERE WILL BE COUNTER FLOW BETWEEN WATER AND AIR.
- COORDINATE THE LOCATION OF ALL DIFFUSERS, GRILLES, REGISTERS, ACCESS DOORS, ETC., WITH THE ARCHITECTURAL REFLECTED CEILING PLANS.
- ALL ROUND ROUNDOFFS AND DROPS TO DIFFUSERS SHALL BE THE SAME NOMINAL SIZE AS THE SCHEDULED DIFFUSER NEAR SIZE.
- THE FIRST FIGURE OF DUCT SIZE INDICATES DIMENSION OF FACE SHOWN OR INDICATED. ALL DUCT SIZES SHOWN ON DRAWINGS ARE NET INSIDE DIMENSIONS.
- PROVIDE 1/2\"/>
- PROVIDE TURNING VANES IN ALL SQUARE ELBOWS, EXCEPT TRANSFER AIR SOUND ELBOWS.
- THE CFM OF EACH DIFFUSER, REGISTER, ETC. IS INDICATED AS A NUMBER NEXT TO THE SYMBOL, OBSERVATION ON THE DRAWINGS.
- REFER TO THE ARCHITECTURAL DRAWINGS FOR EXACT LOCATION OF ALL FIRE RATED AND/OR SOUND RATED WALLS AND ASSEMBLIES. PROVIDE APPROVED FIRE DAMPERS IN ALL REQUIRED PENETRATIONS FOR DUCTWORK, GRILLES, REGISTERS AND DIFFUSERS. ALL PIPE AND DUCTWORK PENETRATIONS OF FIRE, SMOKE AND FULL HEIGHT WALLS SHALL BE CALLED AIRTIGHT TO THE ADJACENT STRUCTURE BY MEANS OF ALL APPROVED FIRE RATED SEALING MATERIAL.
- CONTRACTOR SHALL COORDINATE ALL DUCTWORK, PIPING, PLUMBING AND FIRE PROTECTION PIPING WITH STRUCTURAL AND ELECTRICAL SYSTEMS AND SHALL PROVIDE NECESSARY PERMITS TO AVOID CONFLICTS AND TO MAINTAIN EQUIPMENT ACCESS AND SERVICEABILITY.
- CONTRACTOR SHALL FURNISH ALL NECESSARY STRUCTURES, INSERTS, SLEEVES, AND HANGING DEVICES FOR INSTALLATION OF MECHANICAL AND PLUMBING EQUIPMENT. DUCTWORK AND/OR ETC. CONTRACTOR SHALL COORDINATE WITH GENERAL CONTRACTOR AND ALL BUILDING TRADES TO AVOID CONFLICTS AND TO MAINTAIN EQUIPMENT ACCESS AND SERVICEABILITY.
- CONTRACTOR SHALL BE RESPONSIBLE FOR PROVIDING ALL NECESSARY MISCELLANEOUS ANGLES, CHANNELS, UNIFIT, ETC. AS MAY BE REQUIRED TO ADEQUATELY SUPPORT THE MECHANICAL, PIPING, DUCTWORK, AND EQUIPMENT IN A MANNER APPROVED BY THE ARCHITECT. THESE ITEMS SHALL BE BROUGHT TO THE ATTENTION OF THE ARCHITECT FOR INCLUSION IN ADDENDUM.
- SEAL ALL TRANSVERSE JOINTS, LONGITUDINAL SEAMS, DUCT WALL PENETRATIONS AND FITTING CONNECTIONS ON ALL DUCT SYSTEMS.
- MECHANICAL ITEMS SUCH AS ROOF DRAINS, FLOOR DRAINS, PLUMBING FIXTURES, ETC. SHOWN ON THE ARCHITECTURAL DRAWINGS BUT NOT SHOWN ON THE MECHANICAL DRAWINGS SHALL BE INCLUDED IN THE PROJECT. THESE ITEMS SHALL BE BROUGHT TO THE ATTENTION OF THE ARCHITECT FOR INCLUSION IN ADDENDUM.

GENERAL DEMO NOTES:

- THE DEMOLITION DRAWINGS REFLECT INFORMATION ON EXISTING BUILDING SERVICES GATHERED BY SITE INSPECTION, DISCUSSIONS WITH MAINTENANCE PERSONNEL, AND PREVIOUS CONSTRUCTION DRAWINGS. THE EXACT LOCATION, ARRANGEMENT, AND SIZES OF PIPE LINES AND DUCTWORK IN THE EXISTING BUILDING MAY BE DIFFERENT FROM THAT SHOWN ON THESE DRAWINGS.
- THE CONTRACTOR SHALL COORDINATE THE SHUTDOWN OF EXISTING BUILDING SERVICES FOR REMOVALS WITH OWNER AUTHORIZED REPRESENTATIVE AND SHALL CONFORM TO THEIR REQUIREMENTS.
- DISRUPTION OF NORMAL FACILITY ACTIVITIES ARE TO BE KEPT TO AN ABSOLUTE MINIMUM. DUST, DEBRIS, AND FUMES SHALL BE CONTROLLED SO AS NOT TO AFFECT THE HEALTH AND SAFETY OF OCCUPANTS WITHIN THE FACILITY WHO ARE OUTSIDE THE AREA OF WORK. COORDINATE WITH THE ARCHITECT AND THE OWNER'S REPRESENTATIVE WITH REGARD TO ALL ACTIVITIES TO BE CONDUCTED OUTSIDE OF THE SITE BOUNDARY WHICH MAY AFFECT THE OPERATION OF THE FACILITY. THE CONTRACTOR SHALL PROVIDE TEMPORARY VENTILATION MAINTAIN WORK ZONE AT NEGATIVE PRESSURE, FILTRATION AIR PURIFIER, DUST SCREENS, ETC. FOR ALL WORK AREAS AFFECTED BY DEMOLITION FOR NEW INSTALLATION TO MINIMIZE DUST AND FUMES.
- THE CONTRACTOR SHALL PRESENT AN AREA BY AREA WORK PLAN WELL IN ADVANCE TO THE ARCHITECT AND THE OWNER'S AUTHORIZED REPRESENTATIVE FOR APPROVAL PRIOR TO BEGINNING WORK. THE WORK PLAN SHALL INCLUDE AN OUTLINE OF ALL ACTIVITIES OF ALL SUBCONTRACTORS. THE CONTRACTOR SHALL COORDINATE WITH THE OWNER'S AUTHORIZED REPRESENTATIVE TO ESTABLISH ACCEPTABLE ROUTING AND ACCESS FOR MATERIALS REQUIRED FOR THE NEW INSTALLATION.
- SEE SPECIFICATION SECTION 26500, TESTING, ADJUSTING, & BALANCING FOR HVAC, FOR ADDITIONAL DESCRIPTION AND REQUIREMENTS.
- ALL TEST AND MEASUREMENT TRAVEL LOCATIONS SHALL BE CLEARLY NOTED ON FLOOR PLANS WHICH SHALL BE INCLUDED WITH THE TEST AND MEASUREMENT DATA.
- ALL DATA OBTAINED VIA TESTING AND MEASURING OF THE EXISTING AIR HANDLING UNIT AND THE ASSOCIATED FURNISHES BY THE AIR SUPPLY SYSTEM, EXHAUST, AND RETURN AIR DUCTS INSTALLED IN PHASE 1 PRIOR TO COMMENCING THE DEMOLITION AND/OR NEW WORK SCOPE OF WORK SHALL BE FILED TO ESTABLISH NEW HVAC SYSTEM PERFORMANCE AND BALANCE DATA FOR THE RENOVATION. DATA SHALL BE FORWARDED TO THE PROJECT ENGINEER FOR REVIEW AND COMMENT PRIOR TO DEMOLITION.
- GENERAL CONTRACTOR SHALL BE RESPONSIBLE FOR COORDINATION OF ALL TRADES INCLUDING MECHANICAL, PLUMBING, ELECTRICAL, FURNITURE, AND ARCHITECTURAL. ANY DISCREPANCIES SHALL BE REPORTED IMMEDIATELY TO THE ARCHITECT PRIOR TO START OF WORK.
- ALL NEW TO EXISTING DUCT CONNECTIONS SHALL BE FIELD VERIFIED PRIOR TO ORDERING AND FABRICATING NEW DUCTWORK OR DAMPERS.

Revisions:	Date:

CONSULTANT

ARCHITECT/ENGINEER OF RECORD

A/E
Triple C - The A/E Group
4401 Atlantic Avenue, Suite 200
Long Beach, CA 90807
(562) 452-7175
Mal Perkins

STAMP



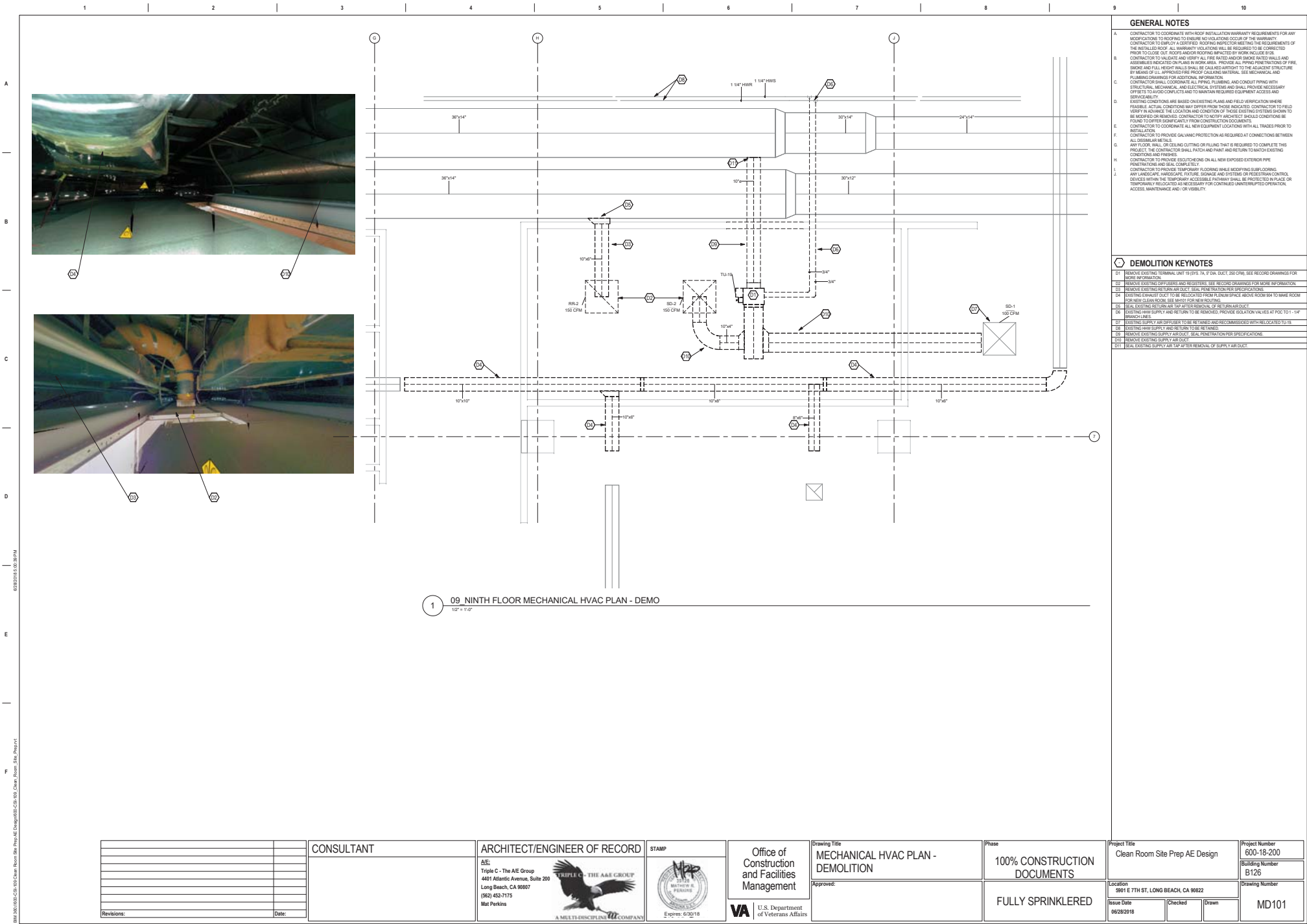
Office of
Construction and
Facilities
Management

VA U.S. Department of Veterans Affairs

Drawing Title	MECHANICAL LEGEND
Approved:	

Phase	100% CONSTRUCTION DOCUMENTS
FULLY SPRINKLERED	

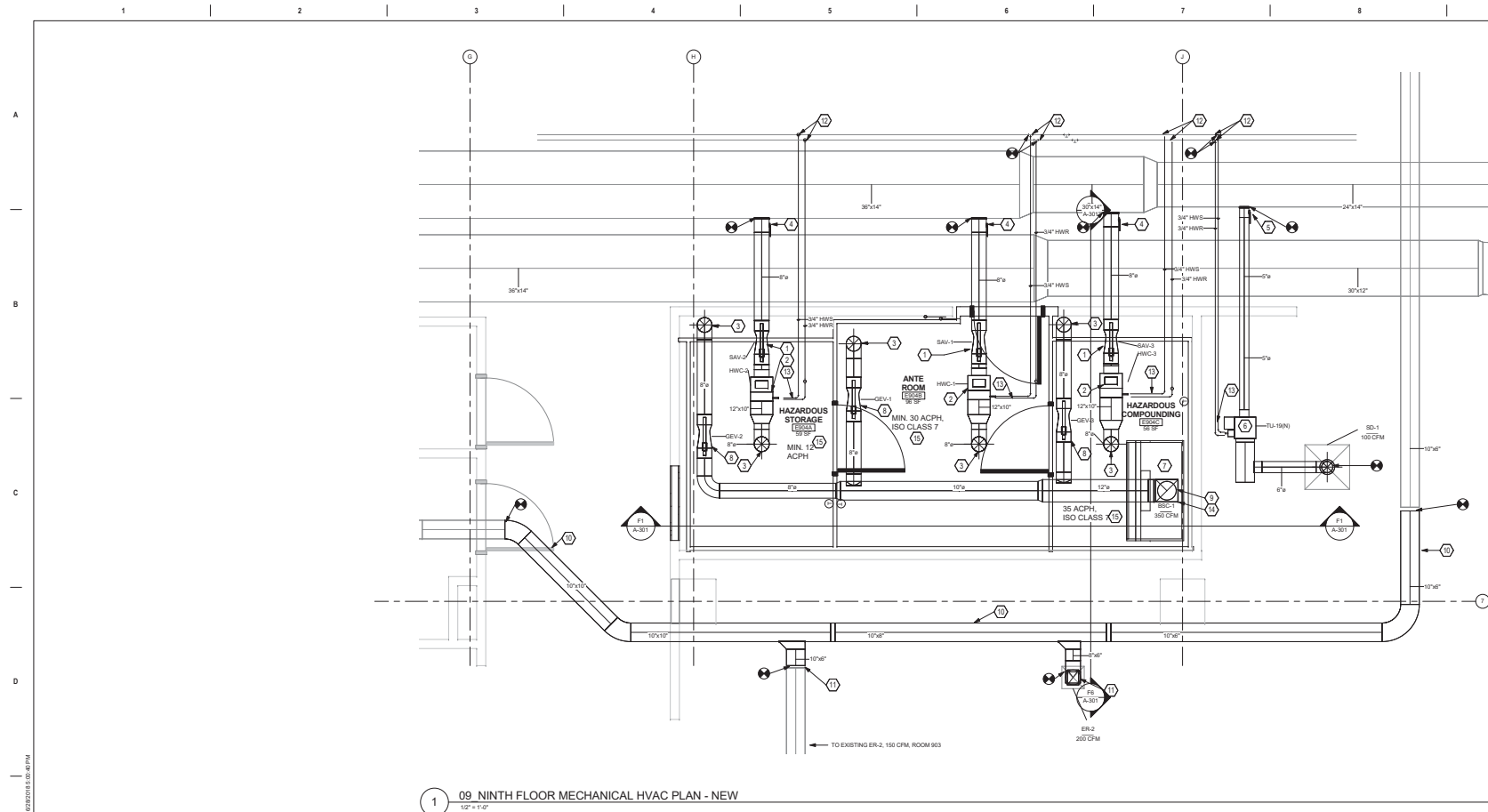
Project Title	Clean Room Site Prep AE Design	Project Number	800-18-200
Location	5901 E 7TH ST, LONG BEACH, CA 90822	Building Number	B126
Issue Date	06/28/2018	Checked	M. PERKINS
		Drawn	K. LUKE
			M-001



03/20/2018 10:30 AM

10

VA FORM 08-6231



GENERAL NOTES

- A. CONTRACTOR TO COORDINATE WITH ROOF INSTALLATION WARRANTY REQUIREMENTS FOR ANY MODIFICATIONS TO ROOFING TO ENSURE NO VIOLATIONS OCCUR OF THE WARRANTY. CONTRACTOR TO OBTAIN A CERTIFIED ROOFING INSPECTOR AND THE REQUIREMENTS OF THE INSTALLED ROOF. ALL WARRANTY VIOLATIONS WILL BE REQUIRED TO BE CORRECTED PRIOR TO CLOSE OUT. ROOF AND/OR ROOFING IMPACTED BY WORK INCLUDES EGS.
- B. CONTRACTOR TO VALIDATE AND VERIFY ALL FIRE RATED AND/OR SMOKE RATED WALLS AND ASSEMBLIES INDICATED ON PLANS IN WORK AREA. PROVIDE ALL PIPING PENETRATIONS OF FIRE SMOKE AND FULL HEIGHT WALLS SHALL BE CALLED OUT TO THE ADJACENT STRUCTURE BY MEANS OF ALL APPROVED PREPARED CALLING MATERIAL. SEE MECHANICAL AND PLUMBING DRAWINGS FOR ADDITIONAL INFORMATION.
- C. CONTRACTOR SHALL COORDINATE ALL PIPING, PLUMBING, AND CONDUIT PIPING WITH STRUCTURAL, MECHANICAL, AND ELECTRICAL SYSTEMS AND SHALL PROVIDE NECESSARY OFFSETS TO AVOID CONFLICTS AND TO MAINTAIN REQUIRED EQUIPMENT ACCESS AND BE CLEARANCE.
- D. EXISTING CONDITIONS ARE BASED ON EXISTING PLANS AND FIELD VERIFICATION WHERE FEASIBLE. ACTUAL CONDITIONS MAY DIFFER FROM THOSE INDICATED. CONTRACTOR TO FIELD VERIFY IN ADVANCE THE LOCATION AND CONDITION OF THOSE EXISTING SYSTEMS SHOWN TO BE MODIFIED OR REMOVED. CONTRACTOR TO PROVIDE AND IDENTIFY ALL SYSTEMS TO BE REMOVED TO OFFER SIGNIFICANTLY FROM CONSTRUCTION DOCUMENTS.
- E. CONTRACTOR TO COORDINATE ALL NEW EQUIPMENT LOCATIONS WITH ALL TRADES PRIOR TO INSTALLATION.
- F. CONTRACTOR TO PROVIDE GALVANIC PROTECTION AS REQUIRED AT CONNECTIONS BETWEEN ALL DISSIMILAR METALS.
- G. ANY FLOOR, WALL, OR CEILING CUTTING OR FILLING THAT IS REQUIRED TO COMPLETE THIS PROJECT, THE CONTRACTOR SHALL PATCH AND PAINT AND RETURN TO MATCH EXISTING CONDITION AND FINISHES.
- H. CONTRACTOR TO PROVIDE BOOT/FLASHING ON ALL NEW EXPOSED EXTERIOR PIPE PENETRATIONS AND SEAL COMPLETELY.
- I. ANY LANDSCAPE, HARDSCAPE, FUTURE, SIGNAGE, AND SYSTEMS OR PEDESTRIAN CONTROL DEVICES WITHIN THE TEMPORARY ACCESS PATHWAY SHALL BE PROTECTED IN PLACE OR TEMPORARILY RELOCATED AS NECESSARY FOR CONTINUED UNINTERRUPTED OPERATION, ACCESS, MAINTENANCE, AND/OR VISIBILITY.
- J. SEE M-SH FOR LOW PRESSURE DUCT FITTING DETAILS. REQUIRED FOR ALL OUTDOOR DOWN STREAM OF FAN SIZES.
- K. SEE M-SH FOR MEDIUM PRESSURE DUCT DETAILS. REQUIRED FOR ALL OUTDOOR UP STREAM OF FAN SIZES AND IF AND ROOMS UPSTREAM OF MEDIUM PRESSURE VENTILATION VALVES.
- L. SEE TERMINAL UNIT DETAILS ON M-SH.
- M. SEE M-SH FOR OFFSHORE AND RESISTOR CONNECTION DETAILS.
- N. REPLACE ALL EXISTING DUCT WRAP IN AREA OF WORK PER SPECIFICATIONS.
- O. ALL EXISTING DUCTWORK BEING REUSED SHALL BE CLEANED INTERNALLY BEFORE REUSE.
- P. SEE M-SH FOR MECHANICAL EQUIPMENT SCHEDULES AND CONTROL SEQUENCE.
- Q. SEE M-SH FOR ADDITIONAL REQUIREMENTS FOR CLEAN ROOMS AFTER PRE-ENGINEERING IS COMPLETE AND AFTER PRE-ENGINEERED CLEAN ROOM IS CONSTRUCTED. ALL AFFECTED EQUIPMENT SHALL BE RE-ENGINEERED.
- R. NEUTRAL PRESSURE TO BE PROVIDED TO SEALED PLENUM OF PRE-ENGINEERED CLEAN ROOM. Q.A.S. TO PROVIDE ROOM PRESSURE DIFFERENTIALS PER M-SH. COORDINATE ALL CONTROL REQUIREMENTS WITH Q.A.S.

KEYNOTES

1. NEW 8" MEDIUM PRESSURE SUPPLY AIR VENTILATION VALVE WITH SHUT OFF. SEE M-SH AND SPECIFICATION 12.31.55 FOR MORE REQUIREMENTS.
2. NEW 8" PRESSURE HOT WATER COOL. ATTACHMENT FOR VENTILATION VALVE WITH SIDE MOUNTED ACCESS. HATCH EXISTING HATCH ROUTED TO NEW TERMINAL UNIT VIA 3/4" PPE. EAT - 55 DEG. F. EXH. 140 DEG. F. 2.31.55P.1. METAL. WATER COOL. PER DETAIL 4M-51. SEE M-SH.
3. NEW 8" ROUND DUCT TAKE OFF FITTING TO SEALED PLENUM OF PRE-ENGINEERED CLEAN ROOM. COORDINATE EXACT LOCATION AND CONNECTION METHOD WITH Q.A.S.
4. NEW 8" ROUND MEDIUM PRESSURE SPIN IN TAKE OFF WITH DAMPER. COORDINATE WITH EXISTING MECHANICAL SYSTEMS AND RESISTANCE AFFECTED SYSTEM DURING COMMISSIONING.
5. NEW 8" ROUND MEDIUM PRESSURE SPIN IN TAKE OFF WITH DAMPER. COORDINATE LOCATION AND INSTALLATION DETAILS WITH Q.A.S.
6. NEW TERMINAL UNIT TO MATCH SPECIFICATIONS OF EXISTING UNIT #16. 1/2" DIA. DUCT. 250 CFM. SEE RECORD DRAWING FOR MORE INFORMATION. RESISTANCE EXISTING SUPPLY AND RETURN AIR IN SYSTEMS. METAL. PER DETAIL 4M-51.
7. NEW CHECK POINT. THIS CHECK POINT USE SPECIFICATION 11.51.51 FOR ADDITIONAL REQUIREMENTS PROVIDED BY CONTRACTOR FOLLOWING CONSTRUCTION OF CLEAN ROOM. TO BE COMMISSIONED AFTER CLEAN ROOM IS CONSTRUCTED. SEE 11.51.51 FOR INFORMATION OF THE SCOPE OF WORK AND 11.51.51 FOR COMMISSIONING REQUIREMENTS.
8. NEW 8" MEDIUM PRESSURE EXHAUST AIR VENTILATION VALVE WITH SHUT OFF PER M-SH AND SPECIFICATION 12.31.55.
9. NEW 12" MEDIUM PRESSURE EQUIPMENT EXHAUST AIR VENTILATION VALVE WITH SHUT OFF. VERTICAL ALIGNMENT ABOVE HOOD. MANUALLY ROOM EXHAUST DOWNSTREAM OF VALVE. COORDINATE LOCATION WITH Q.A.S. TO ENSURE INTEGRATION WITH PRE-ENGINEERED CLEAN ROOM.
10. NEW STAINLESS STEEL GENERAL EXHAUST DUCT TO MATCH EXISTING SIZE AND SPECIFICATIONS. RETURN TO AVOID UPRAISE ABOVE CLEAN ROOM TO PROVIDE SUPPORT PLENUM SPACE FOR PRE-ENGINEERED CLEAN ROOM.
11. NEW STAINLESS STEEL GENERAL EXHAUST DUCT CONNECTED TO EXISTING.
12. NEW 3/4" HWS BR. CONNECTED TO EXISTING. PROVIDE ISOLATION VALVE PER SPECIFICATIONS ALSO SEE M-SH FOR ADDITIONAL REQUIREMENTS AT TU CONNECTION.
13. NEW 3/4" HWS BR. CONNECTED TO NEW HOT WATER COOL. PROVIDE VALVES PER SPECIFICATIONS AND DETAIL 4M-51.
14. NEW 12" X 12" MEDIUM PRESSURE STAINLESS STEEL EXHAUST DUCT RISE TO ROOF TOP EXHAUST FAN. SEE M-SH FOR EQUIPMENT SCHEDULES AND CONTROL SEQUENCE.
15. MAINTAIN ROOM AIR QUALITY AND ROOM DIFFERENTIAL PRESSURE PER ROOM DATA SHEETS ON M-SH. COORDINATE CONTROLS WITH Q.A.S. COMMISSION AND CERTIFY AFTER PRE-ENGINEERED CLEAN ROOM IS INSTALLED.

06/28/2018 10:50:47 AM

06/28/2018 10:50:47 AM

Revisions:	Date:

CONSULTANT

ARCHITECT/ENGINEER OF RECORD

A/E:
Triple C - The A/E Group
4401 Atlantic Avenue, Suite 200
Long Beach, CA 90807
(562) 452-7175
Mal Perkins

TRIPLE C - THE A/E GROUP
A MULTI-DISCIPLINE COMPANY

STAMP



Office of
Construction
and Facilities
Management

VA U.S. Department
of Veterans Affairs

Drawing Title
MECHANICAL HVAC PLANS - NINTH
FLOOR (ROOM E904)

Approved:

Phase
100% CONSTRUCTION
DOCUMENTS

FULLY SPRINKLERED

Project Title
Clean Room Site Prep AE Design

Location
5901 E 7TH ST, LONG BEACH, CA 90802

Issue Date
06/28/2018

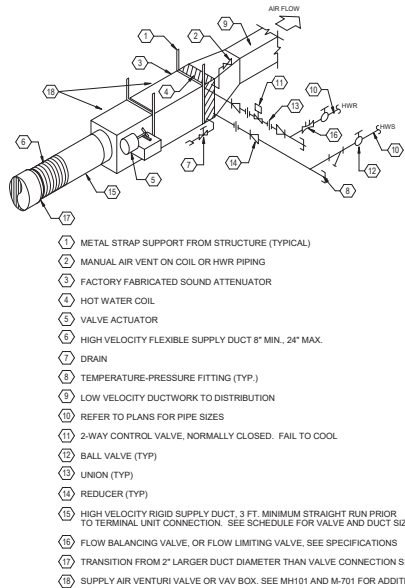
Checked
M. PERKINS

Drawn
K. LUKE

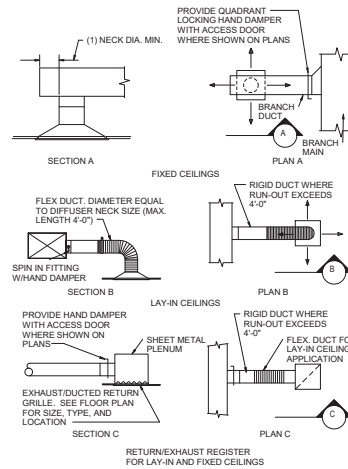
Project Number
800-18-200

Building
B126

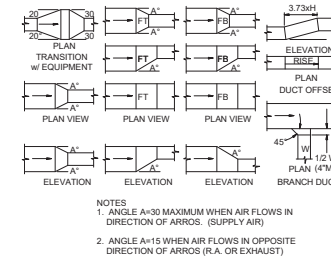
Drawing Number
MH101



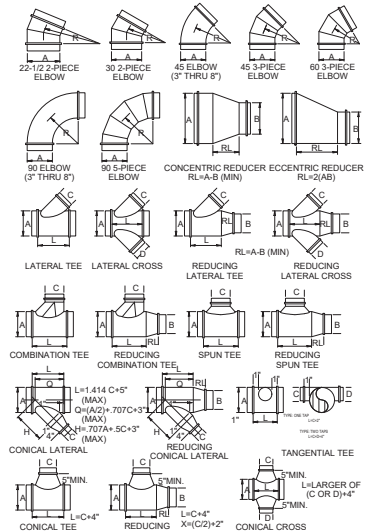
4 TERMINAL UNIT WITH REHEAT COIL (2-WAY VALVE)
14" x 14"



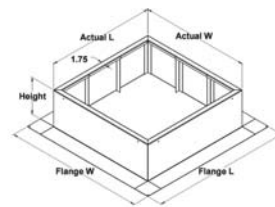
3 DIFFUSER AND REGISTER CONNECTION
12"



2 LOW PRESSURE DUCT FITTINGS
12"



1 MEDIUM PRESSURE DUCT FITTINGS
14" x 14"



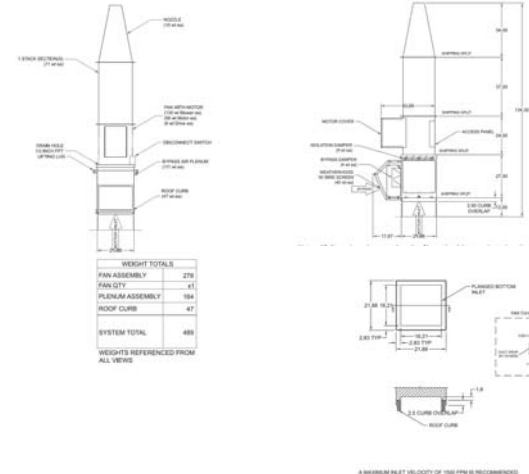
Model: GPFHD

Heavy Duty Roof Curb Standard Construction Features:

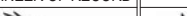

- Roof Curb fits between the building roof and the fan mounted directly to the roof support structure - Constructed entirely of welded steel (12 ga) - Straight Sided - Double roof flashing flange (5 in. width) - Vertical support members - Insulated (1 in. thick, 3 to density) - Height available from 12 in. to 24 in. and 2 in. increments.
- NOTES - Maximum roof opening dimension should not be greater than the "Actual" top outside dimension minus 1.5 in. - Minimum roof opening dimension should be at least 2.5 in. more than damper dimension or recommended duct size
- The Roof Opening Dimension may or may not be the same as the Structural Opening Dimension. - Damper tray is optional and must be specified; tray size same as damper size - Heavy duty curb designed for high wind/hurricane zones and seismic applications

Dimensions					Curb Height		Nominal Width		Nominal Length		Actual Length		Actual Flange Length	
ID#	Tag	Qty	Model	Sizing	(in.)	(in.)	(in.)	(in.)	(in.)	(in.)	(in.)	(in.)	(in.)	(in.)
1-1	RC-1	1	GPFHD-22-G18	Nominal	18	22	22	20.75	20.75	30.75	30.75	30.75	30.75	30.75

Accessories					Insulation		Sizing		Undersizing	
ID#	Material	Security Bars	Liner	Insulation	(in.)	(in.)	(in.)	(in.)	(in.)	(in.)
1-1	Galvanized	No	No	1	Nominal	1.25				



5 DETAIL - POWER ROOF FUME EXHAUSTER SYSTEM AND HEAVY DUTY ROOF CURB
14" x 14"

				CONSULTANT		ARCHITECT/ENGINEER OF RECORD		STAMP		Office of Construction and Facilities Management		Drawing Title MECHANICAL DETAILS		Phase 100% CONSTRUCTION DOCUMENTS		Project Title Clean Room Site Prep AE Design		Project Number 600-18-200			
						A/E: Triple C - The A/E Group 4401 Atlantic Avenue, Suite 200 Long Beach, CA 90807 (562) 452-7175 Mat Perkins		 A MULTIDISCIPLINARY COMPANY		 Expires: 6/30/18		VA U.S. Department of Veterans Affairs		Approved:		Fully Sprinklered		Location 5901 E 7TH ST, LONG BEACH, CA 90822		Drawing Number M-501	
Revisions:		Date:												Issue Date 06/28/2018		Checked M. PERKINS		Drawn K. LUKE			

	Project Number 600-18-200
	Building Number B126
	Drawing Number M-601