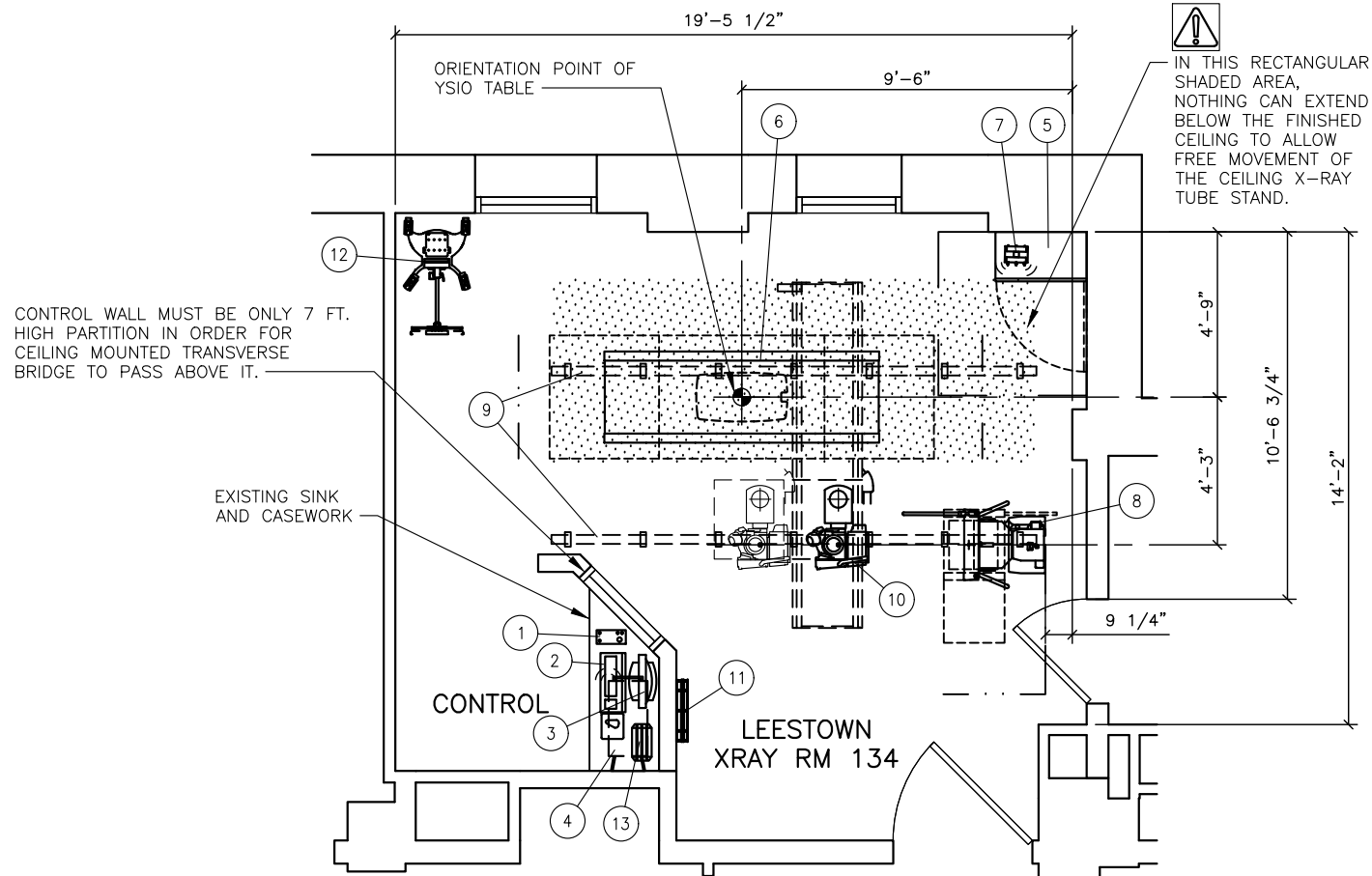


THIS LAYOUT IS REFLECTIVE OF THE LATEST SALES CONFIGURATION. ANY CHANGES TO THIS SALES CONFIGURATION MAY REQUIRE A REVISION TO THIS PROJECT PLAN.



SCALE: 3/16" = 1'-0"

SIEMENS

1800200

PROJECT MANAGER: TRAVIS MATTINGLY
PHONE: (859) 229-0866
EMAIL: TRAVIS.MATTINGLY@SIEMENS.COM

VA LEXINGTON 596

2250 LEESTOWN RD., LEXINGTON, KY 40511

B 02/26/18 CHANGE ROOM NUMBER

SHEET OF
1 2

DATE:
02/26/18

DRAWN BY:
R.SOZA

REF:
30211142

LEESTOWN XRAY RM 134 - YSIO MAX
REFERENCE DOCUMENT - NOT FOR CONSTRUCTION

EQUIPMENT LEGEND

NO	DESCRIPTION	SMS SYM	WEIGHT (LBS)	BTU/HR TO AIR	DIMENSIONS (INCHES)			REMARKS
					W	D	H	
①	CONTROL ROOM MODULE	CRM	2	—	4 3/4	10 1/16	3 3/16	ON CUSTOMER'S COUNTER
②	IMAGING SYSTEM — KEYBOARD AND MOUSE	⬡	—	—	—	—	—	ON CUSTOMER'S COUNTER
③	COLOR CONTROL ROOM DISPLAY	⬢	—	—	—	—	—	ON CUSTOMER'S COUNTER
④	IMAGING SYSTEM CONTAINER (UNDER COUNTER)	IS	110	1,468	17 3/8*	32 1/2*	27*	*INCLUDES REQUIRED CLEARANCES.
⑤	POLYDOROS R80 (80 kW) GENERATOR CABINET	PUY	944	2,048**	31 1/2	17 1/8	86 3/4	**DURING OPERATION, 1,195 IN STANDBY MODE
⑥	YSIO MAX TABLE WITH MOBILE DETECTOR	TY	970	2,560	94 13/16	31 1/2	***	***20 1/4" TO 37 9/16"
⑦	ACCESS POINT (TOP OF GENERATOR)	AP	4	—	8	5 1/2*A	3*B	*A 12 1/4, *B 9" INCLUDING ANTENNAE
⑧	YSIO MAX WALL STAND WITH FIXED DETECTOR (RIGHT LOADING GRID)	WS	551	751	30	35*A	83	*A — MAX. IN HORIZONTAL POSITION
⑨	YSIO CEILING RAILS FOR X-RAY TUBE SUSPENSION	⬢	59	—	167 3/8	3	4	SIZE AND WEIGHT PER RAIL
⑩	3M FULLY SYNCHRONIZED BRIDGE & X-RAY TUBE STAND	TS	772	853	119 1/4	39	*43	*TUBE CARRIAGE IN PARK POSITION
⑪	GRID HOLDER (WALL MOUNTED)	⬢	22	—	21 11/16	4	16 9/16	LOCATED AND INSTALLED BY CUSTOMER/CONTRACTOR
⑫	MOBILE DETECTOR HOLDER ON WHEELS	⬢	121	—	24 1/2	40 3/16	70 1/2	ROLL AROUND LATERAL HOLDER
⑬	CHARGING STATION FOR MAX DETECTORS	⬢	4	—	12 1/2	6 3/4	2	ON CUSTOMER'S COUNTER

EXAM RESTRICTIONS:
1.) ANGLED CROSS-TABLE LATERAL EXPOSURES WITH THE X-RAY TUBE ARE ONLY POSSIBLE FROM THE FRONT SIDE OF THE TABLE.

WARNING NOTES:
1.) THE CONTROL WALL MUST BE ONLY A 7 FT. HIGH PARTITION, IN ORDER FOR THE CEILING MOUNTED TRANSVERSE BRIDGE TO PASS ABOVE IT.

MISCELLANEOUS NOTES:
NOT APPLICABLE

Authorization:
I have reviewed the below referenced plan(s) and understand and agree with the proposed room configuration and equipment arrangement. By signing below, I agree that I have the authority to sign on behalf of the customer. I have been fully informed by Siemens about the limitations (if applicable) that exist regarding the proposed equipment installation. Siemens has explained that the listed limitations may interfere with certain functions of the equipment. We agree to assume responsibility to inform employees, agents, contractors, users or any other persons handling this equipment of these limitations and will assure that the equipment is handled in compliance with these parameters.

Signature: _____ Date: _____
Name Printed: _____ Title: _____

PROJECT MANAGER: TRAVIS MATTINGLY
PHONE: (859) 229-0866
EMAIL: TRAVIS.MATTINGLY@SIEMENS.COM

VA LEXINGTON 596
2250 LEESTOWN RD., LEXINGTON, KY 40511

B 02/26/18 CHANGE ROOM NUMBER

SHEET OF
2 2

DATE:
02/26/18

DRAWN BY:
R.SOZA

REF:
30211142

LEESTOWN XRAY RM 134 - YSIO MAX
REFERENCE DOCUMENT - NOT FOR CONSTRUCTION

1800200

ARCHITECTURAL NOTES

1) ALL PRELIMINARY EQUIPMENT LAYOUTS SUBMITTED BY SIEMENS HEALTHCARE ARE BASED ON THE RECOMMENDED SPACE NECESSARY FOR THE OPERATION AND SERVICEABILITY OF THE EQUIPMENT BEING PROPOSED. SIEMENS WILL NOT SUBMIT AN EQUIPMENT LAYOUT THAT IS NOT IN THE BEST INTEREST OF BOTH THE CUSTOMER AND SIEMENS. ALL EQUIPMENT LAYOUTS ARE BASED EITHER ON AN ACTUAL SITE SURVEY OR ARCHITECTURAL DRAWINGS SUPPLIED TO SIEMENS. SIEMENS WILL NOT BE RESPONSIBLE FOR ANY ALTERATIONS THAT ENCROACH WITHIN DESIGNATED SAFETY AND SERVICE CLEARANCE ZONES AS INDICATED ON DRAWINGS (I.E., PIPE CHASES, VENTILATION DUCTS, CASEWORK, AND SOFFITS, ETC.) MADE BY THE CUSTOMER OR REQUIRED BY A CUSTOMER'S ARCHITECTURAL FIRM ONCE PRELIMINARY DRAWINGS HAVE BEEN SUBMITTED AND APPROVED. DO NOT ALTER ANY SPECIFICATIONS AND/OR DIMENSIONS WITHOUT CONTACTING AND RECEIVING WRITTEN CONFIRMATION FROM SIEMENS PROJECT MANAGER.

2) SIEMENS HEALTHCARE IS NOT AN ARCHITECTURAL OR ENGINEERING FIRM. DRAWINGS SUPPLIED BY SIEMENS ARE NOT CONSTRUCTION DRAWINGS. THEREFORE, THESE DRAWINGS ARE TO BE USED ONLY FOR INFORMATION TO COMPLEMENT ACTUAL CONSTRUCTION DRAWINGS AVAILABLE FROM A CUSTOMER APPOINTED ARCHITECTURAL REPRESENTATIVE OR A CUSTOMER'S ENGINEERING DESIGN GROUP. THE CUSTOMER'S ARCHITECT AND GENERAL CONTRACTOR SHALL BE ULTIMATELY RESPONSIBLE FOR COMPLIANCE WITH ALL APPLICABLE CODES AND PROFESSIONAL DESIGN REQUIREMENTS INCLUDING OSHA/NEC SAFETY CLEARANCE REQUIREMENTS IN ADDITION TO SIEMENS-REQUIRED SAFETY/SERVICE CLEARANCES SHOWN.

3) THE CUSTOMER IS RESPONSIBLE FOR ALL ROOM AND AREA PREPARATION COSTS, PROFESSIONAL FEES, PERMITS, REPORTS, AND INSPECTION FEES.

4) EQUIPMENT WARRANTIES, EXPRESSED OR IMPLIED ON THE PART OF SIEMENS SHALL BE CONTINGENT UPON STRICT COMPLIANCE WITH THE ARCHITECTURAL, STRUCTURAL, ELECTRICAL, MECHANICAL AND RECOMMENDATIONS AND REQUIREMENTS CONTAINED IN THESE DRAWINGS, UNLESS SPECIFIED OTHERWISE.

5) ALL DIMENSIONS SHOWN ARE FROM FINISHED SURFACES UNLESS SPECIFIED OTHERWISE.

6) THIS DRAWING DOES NOT PROVIDE RADIATION SHIELDING REQUIREMENTS FOR X-RAY AND ASSOCIATED EQUIPMENT. THE CUSTOMER IS RESPONSIBLE FOR CONSULTING WITH A REGISTERED RADIATION PHYSICIST. ACTUAL PROTECTION REQUIREMENTS SHALL BE SPECIFIED BY A REGISTERED RADIATION PHYSICIST AT CUSTOMER'S ENGAGEMENT AND EXPENSE. RESPONSIBILITY FOR ALL INFORMATION AS TO THE ROOM LOCATION, USE, AND NUMBER OF ANTICIPATED EXAMINATIONS TO BE PERFORMED PER TIME PERIOD SHALL BE PROVIDED TO THE PHYSICIST BY THE CUSTOMER. THE CUSTOMER SHALL FURTHER TAKE ALL RESPONSIBILITY IN THE COMMUNICATION AND COORDINATION OF ACTIVITIES OF THE RADIATION PHYSICIST AND THE ARCHITECTURAL REPRESENTATIVE.

7) SIEMENS HEALTHCARE SHALL BE RESPONSIBLE FOR SIEMENS EQUIPMENT INSTALLATION, CALIBRATION, CONNECTION AND INSTALLATION OF SIEMENS PROVIDED CABLES. THE CUSTOMER/ELECTRICAL CONTRACTOR IS RESPONSIBLE FOR TERMINATIONS OF CUSTOMER/ELECTRICAL CONTRACTOR-SUPPLIED CABLES TO SIEMENS EQUIPMENT. IN THE EVENT THAT SPECIFIC TRADE RULES OR LICENSE REQUIREMENTS PROHIBIT THIS, THE CUSTOMER SHALL INITIATE THE SERVICES OF APPROVED OTHER CONTRACTORS AND PAY FOR SELECTED, APPROVED PARTIES TO PERFORM THIS WORK WITH SUPERVISION PROVIDED BY SIEMENS. CALIBRATION WHEN ACCOMPLISHED OUTSIDE OF NORMAL INSTALLATION SEQUENCES DUE TO CONTRACTOR OR TRADE RULE ACTIONS OR REQUIREMENTS SHALL BE SUPPORTED BY, CHARGED TO, AND ACCEPTED BY THE CUSTOMER AS AN ADDITIONAL INSTALLATION EXPENSE.

8) THE CUSTOMER SHALL COORDINATE WITH SIEMENS PROJECT MANAGER THE LOCATIONS AND TRAVEL OF ALL ANCILLARY EQUIPMENT TO BE CEILING OR WALL MOUNTED (I.E.: O.R. LIGHTS, MEDICAL GAS COLUMNS, PHYSIOLOGICAL MONITORING INJECTORS, CRT PLATFORMS, SPRINKLER HEADS, SMOKE DETECTORS, ELECTRICAL OUTLETS, HVAC GRILLES, SPEAKERS, AND GENERAL ROOM LIGHTING, ETC.).

9) THE GENERAL CONTRACTOR/CUSTOMER SHALL BE RESPONSIBLE FOR ALL FINAL PAINT, TOUCH-UP AND ANY COSMETIC OR TRIM WORK WHICH NEEDS TO BE OR IS REQUIRED TO BE COMPLETED AFTER THE INSTALLATION OF THE SIEMENS EQUIPMENT AND ANY ASSOCIATED SUPPORT APPARATUS.

FOR ADDITIONAL PLANNING RELATED QUESTIONS,
PLEASE REFER TO TYPICAL DRAWING SET OR
SIEMENS PROJECT MANAGEMENT.

SIEMENS