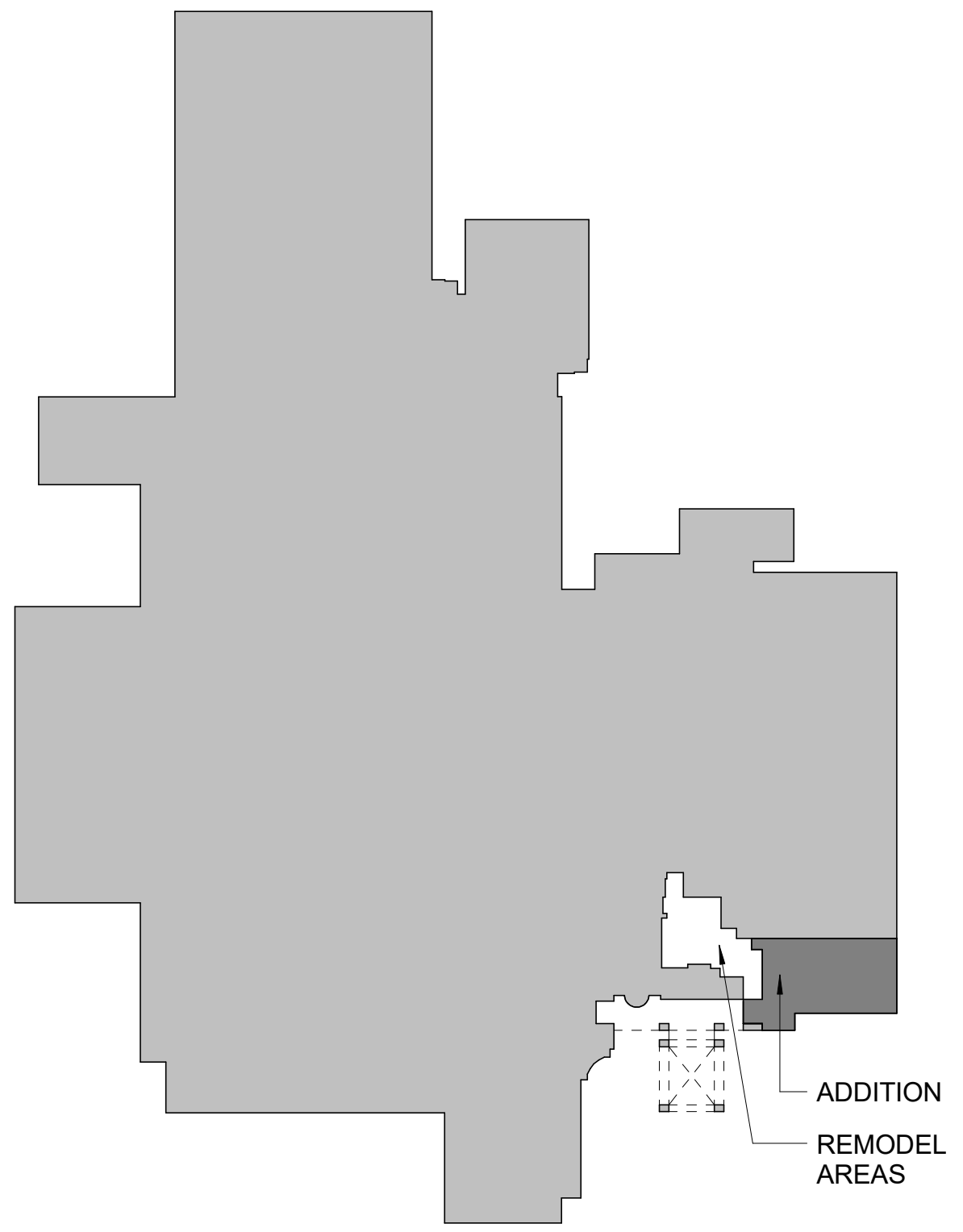
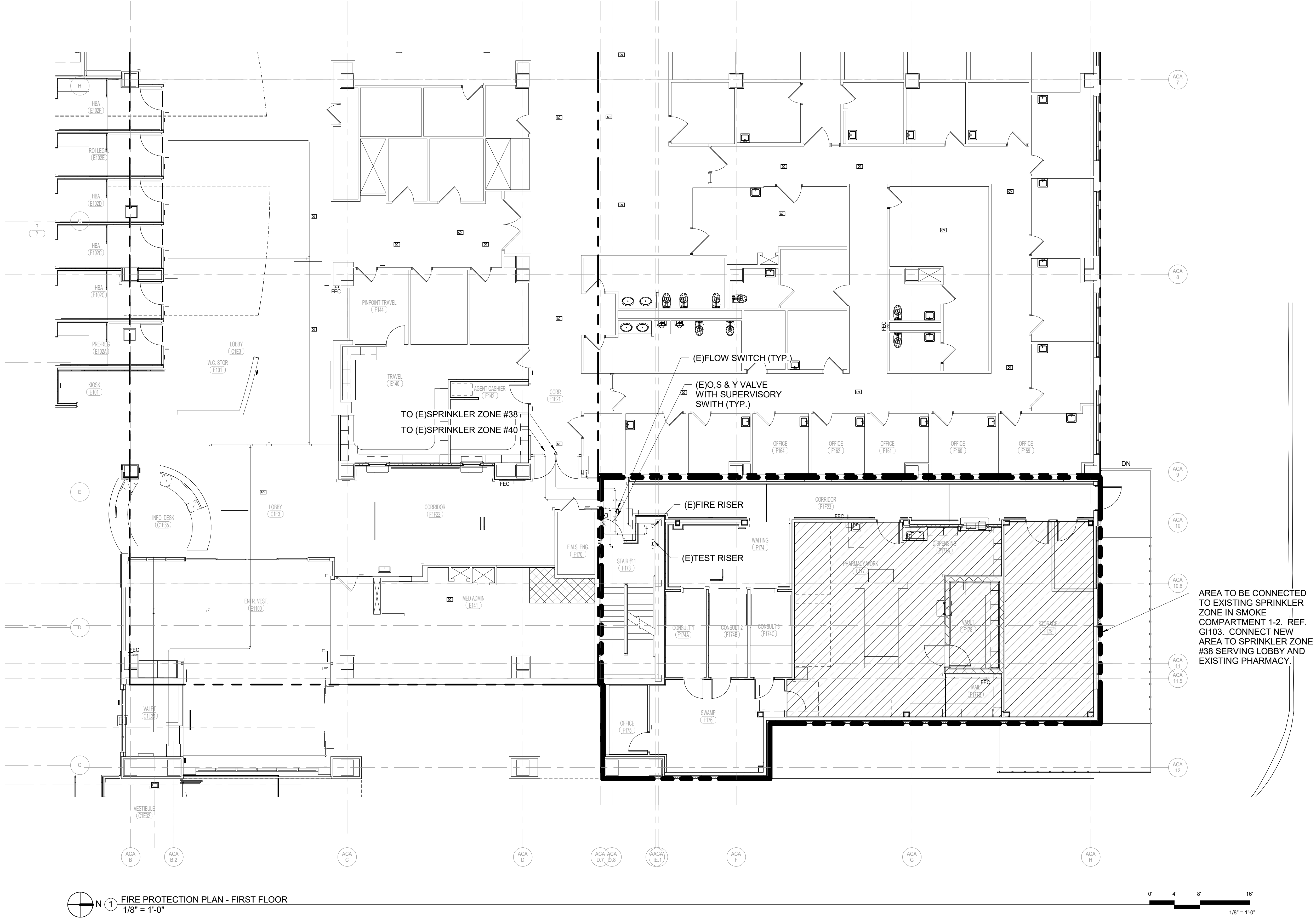


three inches = one foot  
one and one half inches = one foot  
one inch = one foot  
three quarters inch = one foot  
one half inch = one foot  
three eighths inch = one foot  
one quarter inch = one foot  
one eighth inch = one foot

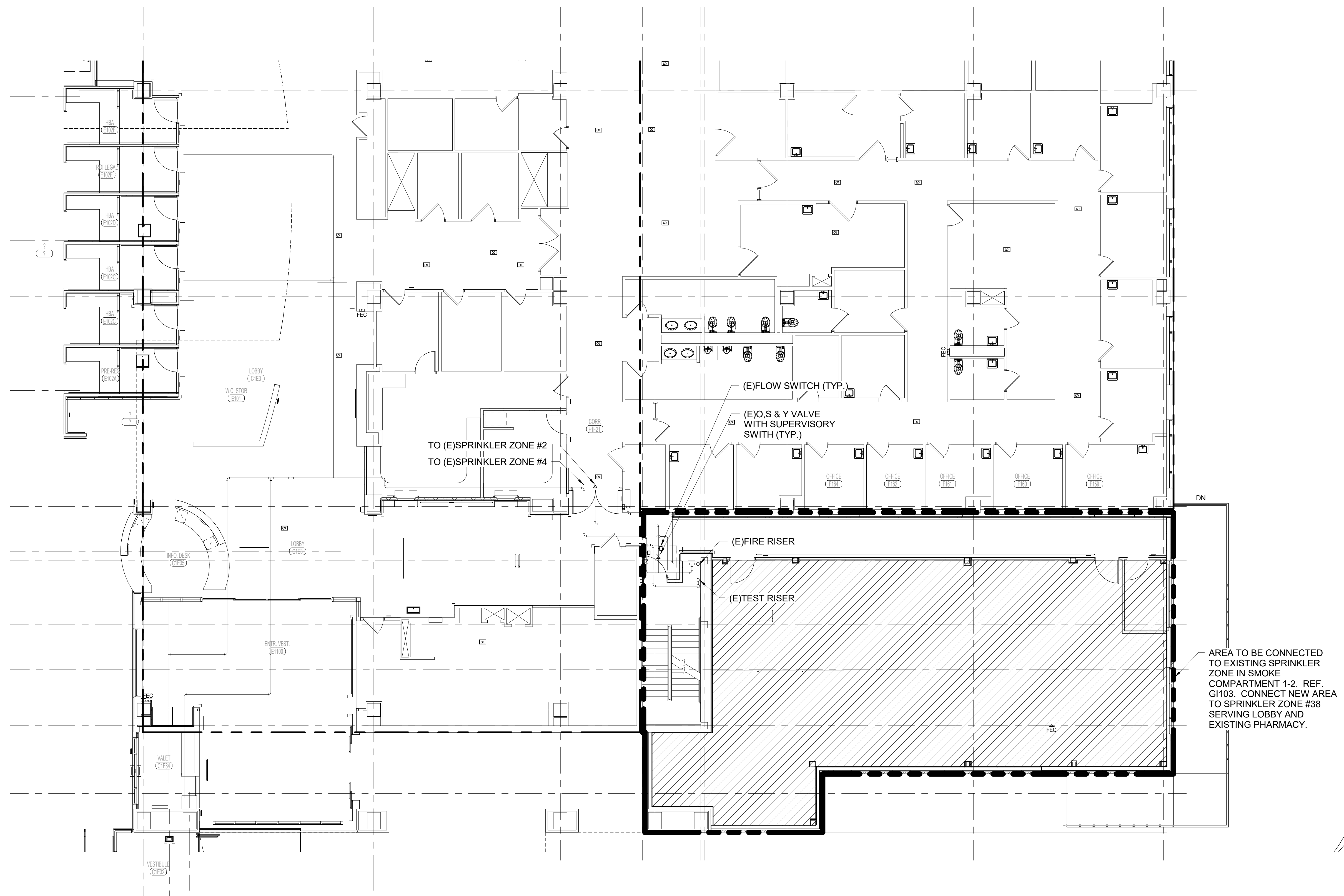
FP SHEET INDEX	
FP101	FIRE PROTECTION PLAN - FIRST FLOOR
FP101.2	FIRE PROTECTION PLAN - FIRST FLOOR - BID DEDUCT #2
FP102	FIRE PROTECTION PLAN - SECOND FLOOR
FP102.1	FIRE PROTECTION PLAN - SECOND FLOOR - BID DEDUCT #1

HATCH KEY PLAN	
	ORDINARY HAZARD GROUP 1
	ORDINARY HAZARD GROUP 2
	LIGHT HAZARD

- GENERAL FIRE PROTECTION NOTES**
- EXISTING PIPING AND FIRE PROTECTION ZONES ARE SHOWN FOR REFERENCE ONLY.
  - FIRE PROTECTION CONTRACTOR SHALL BE RESPONSIBLE FOR THE FOLLOWING:
    - REMOVE DISTRIBUTION PIPING BACK TO MAIN. REDISTRIBUTE AS REQUIRED TO ACCOMMODATE NEW FLOOR PLAN. (E) BRANCE PIPING MAY BE USED IF SIZE MATCHES CALCULATION REQUIREMENTS.
    - PROVIDE NEW HEADS AS REQUIRED TO ACCOMMODATE NEW FLOOR PLAN. REMOVED HEADS SHALL NOT BE REINSTALLED. ALL NEW HEADS ARE TO BE FM-APPROVED, QUICK RESPONSE TYPE.
    - FIRE SPRINKLER HEADS SHALL BE LOCATED IN CENTER OF TILE IN BOTH DIRECTIONS WHEN LOCATED IN LAY-IN CEILINGS. FIRE SPRINKLER HEADS SHALL BE LOCATED IN SYMMETRICAL PATTERNS IN ROOMS WITH HARD CEILINGS.
    - COORDINATE SPRINKLER HEAD LOCATIONS WITH ALL CEILING COMPONENTS INCLUDING ELECTRICAL & MECHANICAL COMPONENTS.
  - FIRE PROTECTION CONTRACTOR SHALL BE RESPONSIBLE FOR THE SPRINKLER HEAD LAYOUTS, CALCULATIONS, AND SEALED ENGINEERING DRAWINGS AS FOLLOWS:
    - DELEGATED DESIGN: DESIGN SPRINKLER SYSTEM (S), INCLUDING COMPREHENSIVE ENGINEERING ANALYSIS BY A QUALIFIED PROFESSIONAL ENGINEER, USING PERFORMANCE REQUIREMENTS AND DESIGN CRITERIA OF NFPA 13.
    - OBTAIN COPY OF FIRE-HYDRANT OR RISER FLOW TEST RECORDS OR CONTACT LOCAL WATER AND/OR FIRE DEPARTMENTS TO PERFORM A FIRE-HYDRANT FLOW TEST. INCLUDE FLOW TEST RESULTS FOR EACH RISER WITH HYDRAULIC CALCULATIONS. INCLUDE A 10% SAFETY FACTOR IN HYDRAULIC CALCULATIONS.
    - SPRINKLER SYSTEM SHALL BE APPROVED BY AUTHORITIES HAVING JURISDICTION.
    - SHOP DRAWINGS: FOR WET-PIPE SPRINKLER SYSTEMS. INCLUDE PLANS, ELEVATIONS, SECTIONS, DETAILS, AND ATTACHMENTS TO OTHER WORK.
    - DELEGATED DESIGN SUBMITTAL: FOR ALL SPRINKLER SYSTEMS, INCLUDING ANALYSIS DATA SIGNED AND SEALED BY THE QUALIFIED PROFESSIONAL ENGINEER RESPONSIBLE FOR THEIR PREPARATION. ENGINEER SHALL BE LICENSED IN THE STATE OF MISSOURI.
    - COORDINATION DRAWINGS: SPRINKLER SYSTEMS, DRAWN TO SCALE, ON WHICH THE ELECTRICAL, PLUMBING, HVAC, STRUCTURAL AND OTHER BUILDING SYSTEMS ARE SHOWN AND COORDINATED WITH EACH OTHER, USING INPUT FROM INSTALLERS OF THE ITEMS INVOLVED.
    - APPROVED SPRINKLER PIPING DRAWINGS: WORKING PLANS, PREPARED ACCORDING TO NFPA 13, THAT HAVE BEEN APPROVED BY AUTHORITIES HAVING JURISDICTION, INCLUDING HYDRAULIC CALCULATIONS.
  - EXISTING FIRE PROTECTION PIPING ARE BASED ON BEST AVAILABLE EXISTING DRAWINGS AND ARE SHOWN FOR INFORMATION ONLY. FP CONTRACTOR RESPONSIBLE FOR VERIFYING EXISTING CONDITIONS BEFORE BEGINNING WORK.
  - THIS CONTRACTOR IS RESPONSIBLE FOR SUBMITTING FULL COORDINATION AND LAYOUT DRAWINGS PER FIRE PROTECTION SPEC SECTION. COORDINATION SHOULD BE COMPLETED WITH ALL TRADES INCLUDED. CONSTRUCTION SHALL NOT BEGIN UNTIL COORDINATION DRAWINGS HAVE BEEN REVIEWED BY THE ENGINEER AND COR.**



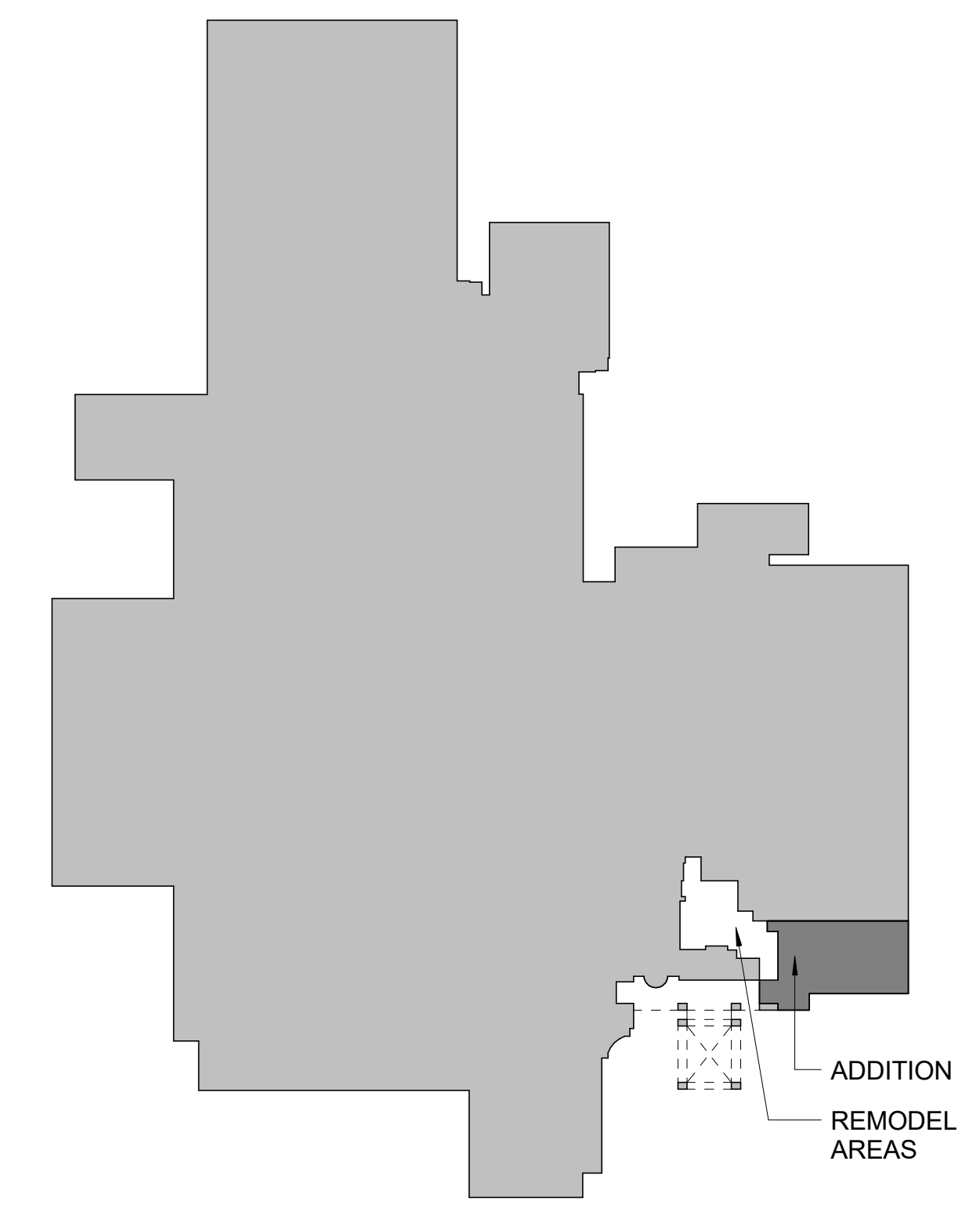
Revisions:	Date:	CONSULTANTS:	OFFEROR:	ARCHITECT/ENGINEERS:	Drawing Title	Project Title	Project Number	Building Number	Office of Construction and Facilities Management
					FIRE PROTECTION PLAN - FIRST FLOOR	EXPAND PHARMACY AND LOBBY	589-334	1	
					Approved: Project Director	Location	COLUMBIA, MO	Drawing Number	FP101
						Date	04/03/2018	Checked	BOH
						Drawn	FLB	Dwg. of	--



**HATCH KEY PLAN**

	ORDINARY HAZARD GROUP 1
	ORDINARY HAZARD GROUP 2
	LIGHT HAZARD

- GENERAL FIRE PROTECTION NOTES**
- EXISTING PIPING AND FIRE PROTECTION ZONES ARE SHOWN FOR REFERENCE ONLY.
  - FIRE PROTECTION CONTRACTOR SHALL BE RESPONSIBLE FOR THE FOLLOWING:
    - REMOVE DISTRIBUTION PIPING BACK TO MAIN. REDISTRIBUTE AS REQUIRED TO ACCOMMODATE NEW FLOOR PLAN. (E) BRANCE PIPING MAY BE USED IF SIZE MATCHES CALCULATION REQUIREMENTS.
    - PROVIDE NEW HEADS AS REQUIRED TO ACCOMMODATE NEW FLOOR PLAN. REMOVED HEADS SHALL NOT BE REINSTALLED. ALL NEW HEADS ARE TO BE FM-APPROVED, QUICK RESPONSE TYPE.
    - FIRE SPRINKLER HEADS SHALL BE LOCATED IN CENTER OF TILE IN BOTH DIRECTIONS WHEN LOCATED IN LAY-IN CEILINGS. FIRE SPRINKLER HEADS SHALL BE LOCATED IN SYMMETRICAL PATTERNS IN ROOMS WITH HARD CEILINGS.
    - COORDINATE SPRINKLER HEAD LOCATIONS WITH ALL CEILING COMPONENTS INCLUDING ELECTRICAL & MECHANICAL COMPONENTS.
  - FIRE PROTECTION CONTRACTOR SHALL BE RESPONSIBLE FOR THE SPRINKLER HEAD LAYOUTS, CALCULATIONS, AND SEALED ENGINEERING DRAWINGS AS FOLLOWS:
    - DELEGATED DESIGN: DESIGN SPRINKLER SYSTEM (S), INCLUDING COMPREHENSIVE ENGINEERING ANALYSIS BY A QUALIFIED PROFESSIONAL ENGINEER, USING PERFORMANCE REQUIREMENTS AND DESIGN CRITERIA OF NFPA 13.
    - OBTAIN COPY OF FIRE-HYDRANT OR RISER FLOW TEST RECORDS OR CONTACT LOCAL WATER AND/OR FIRE DEPARTMENTS TO PERFORM A FIRE-HYDRANT FLOW TEST. INCLUDE FLOW TEST RESULTS FOR EACH RISER WITH HYDRAULIC CALCULATIONS. INCLUDE A 10% SAFETY FACTOR IN HYDRAULIC CALCULATIONS.
    - SPRINKLER SYSTEM SHALL BE APPROVED BY AUTHORITIES HAVING JURISDICTION.
    - SHOP DRAWINGS: FOR WET-PIPE SPRINKLER SYSTEMS. INCLUDE PLANS, ELEVATIONS, SECTIONS, DETAILS, AND ATTACHMENTS TO OTHER WORK.
    - DELEGATED DESIGN SUBMITTAL: FOR ALL SPRINKLER SYSTEMS, INCLUDING ANALYSIS DATA SIGNED AND SEALED BY THE QUALIFIED PROFESSIONAL ENGINEER RESPONSIBLE FOR THEIR PREPARATION. ENGINEER SHALL BE LICENSED IN THE STATE OF MISSOURI.
    - COORDINATION DRAWINGS: SPRINKLER SYSTEMS, DRAWN TO SCALE, ON WHICH THE ELECTRICAL, PLUMBING, HVAC, STRUCTURAL AND OTHER BUILDING SYSTEMS ARE SHOWN AND COORDINATED WITH EACH OTHER, USING INPUT FROM INSTALLERS OF THE ITEMS INVOLVED.
    - APPROVED SPRINKLER PIPING DRAWINGS: WORKING PLANS, PREPARED ACCORDING TO NFPA 13, THAT HAVE BEEN APPROVED BY AUTHORITIES HAVING JURISDICTION, INCLUDING HYDRAULIC CALCULATIONS.
  - EXISTING FIRE PROTECTION PIPING ARE BASED ON BEST AVAILABLE EXISTING DRAWINGS AND ARE SHOWN FOR INFORMATION ONLY. FP CONTRACTOR RESPONSIBLE FOR VERIFYING EXISTING CONDITIONS BEFORE BEGINNING WORK.
  - THIS CONTRACTOR IS RESPONSIBLE FOR SUBMITTING FULL COORDINATION AND LAYOUT DRAWINGS PER FIRE PROTECTION SPEC SECTION. COORDINATION SHOULD BE COMPLETED WITH ALL TRADES INCLUDED. CONSTRUCTION SHALL NOT BEGIN UNTIL COORDINATION DRAWINGS HAVE BEEN REVIEWED BY THE ENGINEER AND COR.**



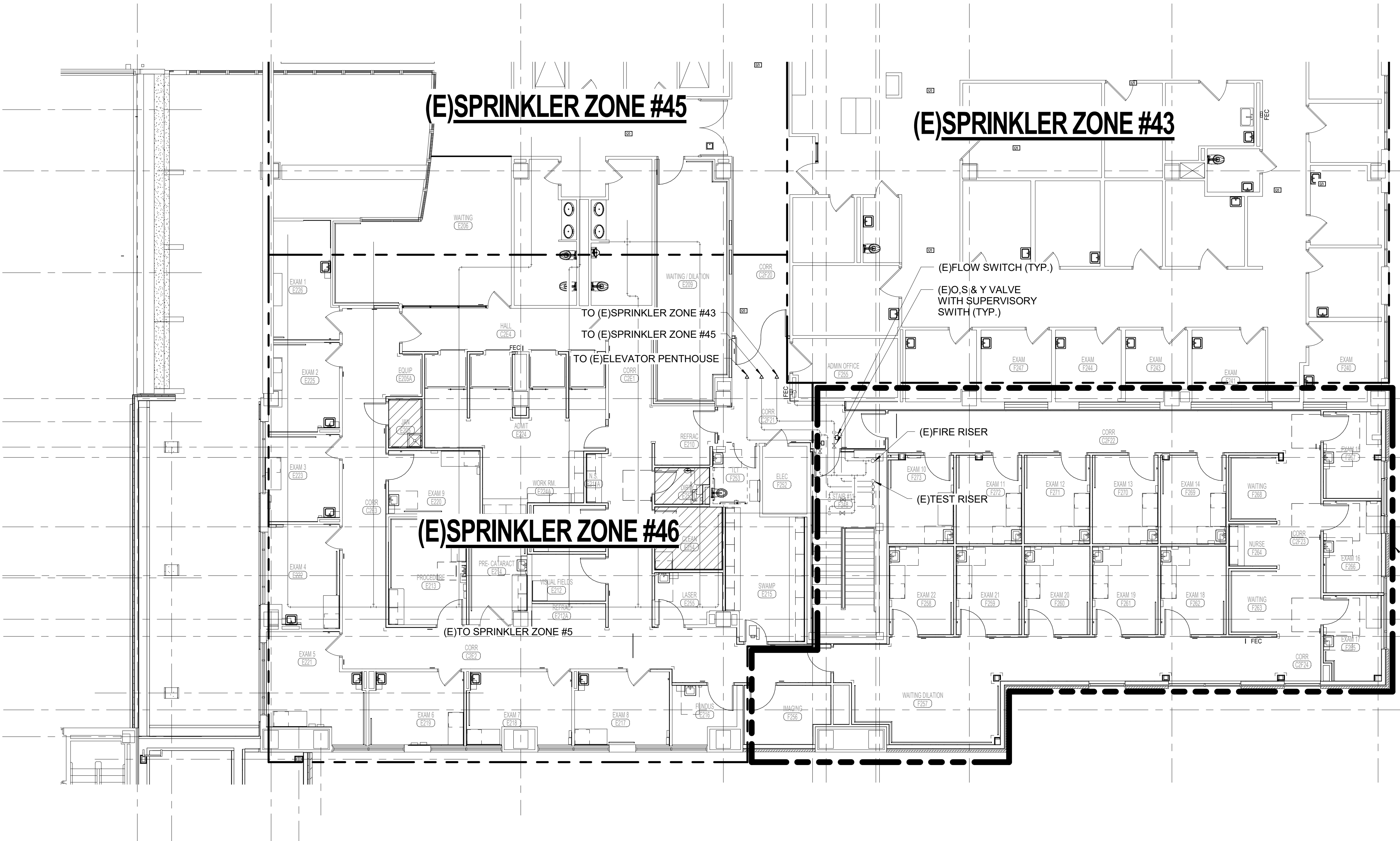
KEY PLAN LEVEL 1  
1" = 80'-0"

1 FIRE PROTECTION PLAN - FIRST FLOOR - BID DEDUCT #2  
1/8" = 1'-0"

<b>CONSULTANTS:</b>		<b>OFFEROR:</b> 	<b>ARCHITECT/ENGINEERS:</b> 	<b>Drawing Title</b> <b>FIRE PROTECTION PLAN - FIRST FLOOR - BID DEDUCT #2</b>	<b>Project Title</b> <b>EXPAND PHARMACY AND LOBBY</b>	<b>Project Number</b> <b>589-334</b>	<b>Office of Construction and Facilities Management</b> 
				<b>Approved: Project Director</b>	<b>Location</b> COLUMBIA, MO	<b>Building Number</b> <b>1</b>	
<b>Revisions:</b>				<b>Date</b> 04/04/2018	<b>Checked</b> BOH	<b>Drawn</b> FLB	
						<b>Drawing Number</b> <b>FP101.2</b>	<b>Dwg. of --</b>



three inches = one foot  
one and one half inches = one foot  
one inch = one foot  
three quarters inch = one foot  
three eighths inch = one foot  
one half inch = one foot  
one quarter inch = one foot  
one eighth inch = one foot



**HATCH KEY PLAN**

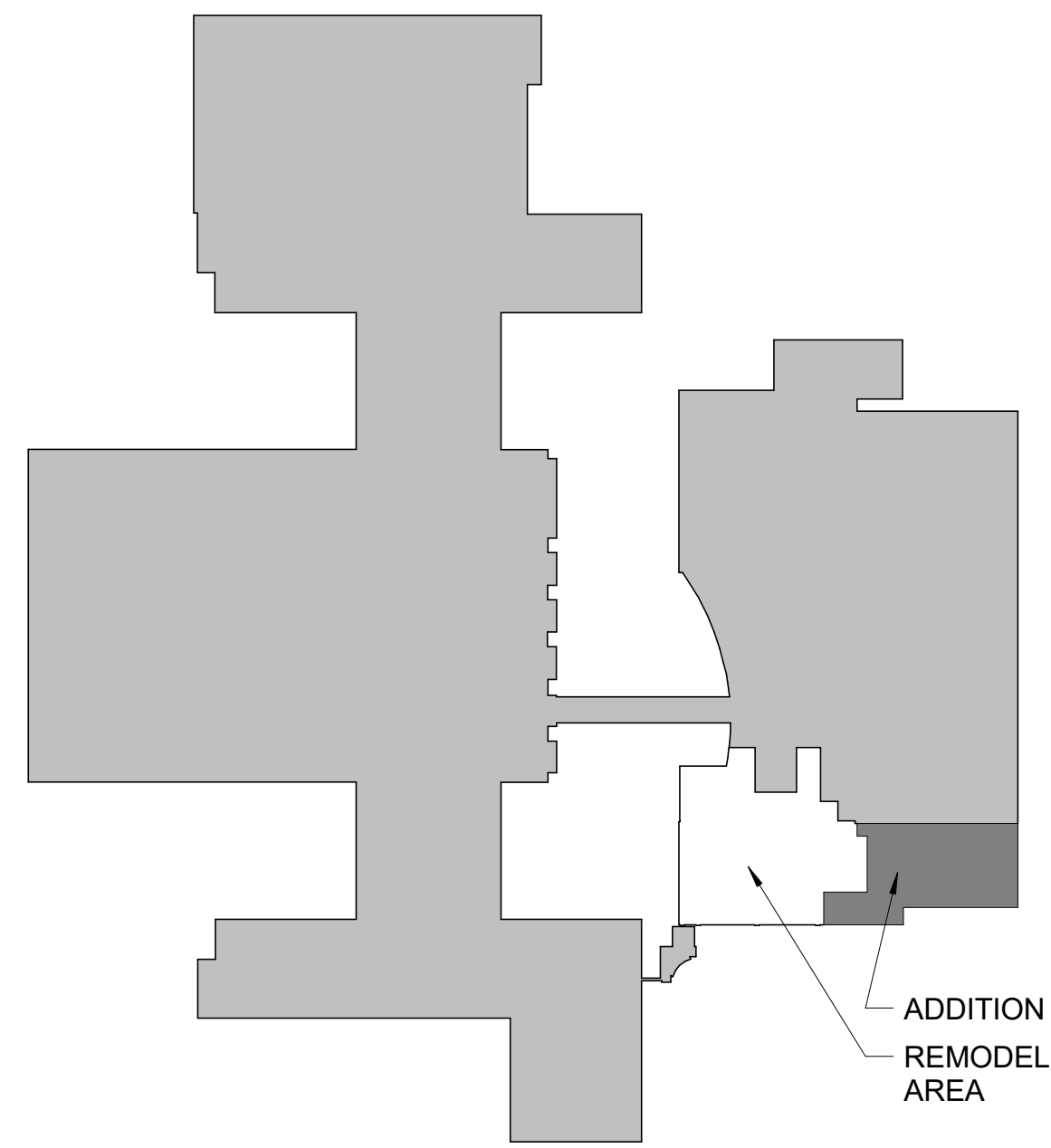
- ORDINARY HAZARD GROUP 1
- ORDINARY HAZARD GROUP 2
- LIGHT HAZARD

- GENERAL FIRE PROTECTION NOTES**
- EXISTING PIPING AND FIRE PROTECTION ZONES ARE SHOWN FOR REFERENCE ONLY.
  - FIRE PROTECTION CONTRACTOR SHALL BE RESPONSIBLE FOR THE FOLLOWING:
    - REMOVE DISTRIBUTION PIPING BACK TO MAIN. REDISTRIBUTE AS REQUIRED TO ACCOMMODATE NEW FLOOR PLAN. (E) BRANCE PIPING MAY BE USED IF SIZE MATCHES CALCULATION REQUIREMENTS.
    - PROVIDE NEW HEADS AS REQUIRED TO ACCOMMODATE NEW FLOOR PLAN. REMOVED HEADS SHALL NOT BE REINSTALLED. ALL NEW HEADS ARE TO BE FM-APPROVED, QUICK RESPONSE TYPE.
    - FIRE SPRINKLER HEADS SHALL BE LOCATED IN CENTER OF TILE IN BOTH DIRECTIONS WHEN LOCATED IN LAY-IN CEILINGS. FIRE SPRINKLER HEADS SHALL BE LOCATED IN SYMMETRICAL PATTERNS IN ROOMS WITH HARD CEILINGS.
    - COORDINATE SPRINKLER HEAD LOCATIONS WITH ALL CEILING COMPONENTS INCLUDING ELECTRICAL & MECHANICAL COMPONENTS.
  - FIRE PROTECTION CONTRACTOR SHALL BE RESPONSIBLE FOR THE SPRINKLER HEAD LAYOUTS, CALCULATIONS, AND SEALED ENGINEERING DRAWINGS AS FOLLOWS:
    - DELEGATED DESIGN: DESIGN SPRINKLER SYSTEM (S), INCLUDING COMPREHENSIVE ENGINEERING ANALYSIS BY A QUALIFIED PROFESSIONAL ENGINEER, USING PERFORMANCE REQUIREMENTS AND DESIGN CRITERIA OF NFPA 13.
    - OBTAIN COPY OF FIRE-HYDRANT OR RISER FLOW TEST RECORDS OR CONTACT LOCAL WATER AND/OR FIRE DEPARTMENTS TO PERFORM A FIRE-HYDRANT FLOW TEST. INCLUDE FLOW TEST RESULTS FOR EACH RISER WITH HYDRAULIC CALCULATIONS. INCLUDE A 10% SAFETY FACTOR IN HYDRAULIC CALCULATIONS.
    - SPRINKLER SYSTEM SHALL BE APPROVED BY AUTHORITIES HAVING JURISDICTION.
    - SHOP DRAWINGS: FOR WET-PIPE SPRINKLER SYSTEMS. INCLUDE PLANS, ELEVATIONS, SECTIONS, DETAILS, AND ATTACHMENTS TO OTHER WORK.
    - DELEGATED DESIGN SUBMITTAL: FOR ALL SPRINKLER SYSTEMS, INCLUDING ANALYSIS DATA SIGNED AND SEALED BY THE QUALIFIED PROFESSIONAL ENGINEER RESPONSIBLE FOR THEIR PREPARATION. ENGINEER SHALL BE LICENSED IN THE STATE OF MISSOURI.
    - COORDINATION DRAWINGS: SPRINKLER SYSTEMS, DRAWN TO SCALE, ON WHICH THE ELECTRICAL, PLUMBING, HVAC, STRUCTURAL AND OTHER BUILDING SYSTEMS ARE SHOWN AND COORDINATED WITH EACH OTHER, USING INPUT FROM INSTALLERS OF THE ITEMS INVOLVED.
    - APPROVED SPRINKLER PIPING DRAWINGS: WORKING PLANS, PREPARED ACCORDING TO NFPA 13, THAT HAVE BEEN APPROVED BY AUTHORITIES HAVING JURISDICTION, INCLUDING HYDRAULIC CALCULATIONS.
  - EXISTING FIRE PROTECTION PIPING ARE BASED ON BEST AVAILABLE EXISTING DRAWINGS AND ARE SHOWN FOR INFORMATION ONLY. FP CONTRACTOR RESPONSIBLE FOR VERIFYING EXISTING CONDITIONS BEFORE BEGINNING WORK.
  - THIS CONTRACTOR IS RESPONSIBLE FOR SUBMITTING FULL COORDINATION AND LAYOUT DRAWINGS PER FIRE PROTECTION SPEC SECTION. COORDINATION SHOULD BE COMPLETED WITH ALL TRADES INCLUDED. CONSTRUCTION SHALL NOT BEGIN UNTIL COORDINATION DRAWINGS HAVE BEEN REVIEWED BY THE ENGINEER AND COR.**

1 FIRE PROTECTION PLAN - SECOND FLOOR  
1/8" = 1'-0"

0' 4' 8' 16'  
1/8" = 1'-0"

KEY PLAN LEVEL 2  
1" = 80'-0"



Revisions:	Date	CONSULTANTS:	OFFEROR: 	ARCHITECT/ENGINEERS: 	Drawing Title <b>FIRE PROTECTION PLAN - SECOND FLOOR</b> Approved: Project Director	Project Title <b>EXPAND PHARMACY AND LOBBY</b>	Project Number <b>589-334</b> Building Number <b>1</b>	Location COLUMBIA, MO	Date 04/04/2018	Checked BOH	Drawn FLB	Dwg. of --	Office of Construction and Facilities Management Department of Veterans Affairs
------------	------	--------------	--------------	--------------------------	---	---	---	--------------------------	--------------------	----------------	--------------	------------	--

three inches = one foot  
one and one half inches = one foot  
one inch = one foot  
three quarters inch = one foot  
one half inch = one foot  
three eighths inch = one foot  
one quarter inch = one foot  
one eighth inch = one foot

HATCH KEY PLAN

ORDINARY HAZARD GROUP 1

ORDINARY HAZARD GROUP 2

NO HATCH

LIGHT HAZARD

- GENERAL FIRE PROTECTION NOTES
1. EXISTING PIPING AND FIRE PROTECTION ZONES ARE SHOWN FOR REFERENCE ONLY.

2. FIRE PROTECTION CONTRACTOR SHALL BE RESPONSIBLE FOR THE FOLLOWING:

a. REMOVE DISTRIBUTION PIPING BACK TO MAIN. REDISTRIBUTE AS REQUIRED TO ACCOMMODATE NEW FLOOR PLAN. (E) BRANCE PIPING MAY BE USED IF SIZE MATCHES CALCULATION REQUIREMENTS.

b. PROVIDE NEW HEADS AS REQUIRED TO ACCOMMODATE NEW FLOOR PLAN. REMOVED HEADS SHALL NOT BE REINSTALLED. ALL NEW HEADS ARE TO BE FM-APPROVED, QUICK RESPONSE TYPE.

c. FIRE SPRINKLER HEADS SHALL BE LOCATED IN CENTER OF TILE IN BOTH DIRECTIONS WHEN LOCATED IN LAY-IN CEILINGS. FIRE SPRINKLER HEADS SHALL BE LOCATED IN SYMMETRICAL PATTERNS IN ROOMS WITH HARD CEILINGS.

d. COORDINATE SPRINKLER HEAD LOCATIONS WITH ALL CEILING COMPONENTS INCLUDING ELECTRICAL & MECHANICAL COMPONENTS.

3. FIRE PROTECTION CONTRACTOR SHALL BE RESPONSIBLE FOR THE SPRINKLER HEAD LAYOUTS, CALCULATIONS, AND SEALED ENGINEERING DRAWINGS AS FOLLOWS:

a. DELEGATED DESIGN: DESIGN SPRINKLER SYSTEM (S), INCLUDING COMPREHENSIVE ENGINEERING ANALYSIS BY A QUALIFIED PROFESSIONAL ENGINEER, USING PERFORMANCE REQUIREMENTS AND DESIGN CRITERIA OF NFPA 13.

b. OBTAIN COPY OF FIRE-HYDRANT OR RISER FLOW TEST RECORDS OR CONTACT LOCAL WATER AND/OR FIRE DEPARTMENTS TO PERFORM A FIRE-HYDRANT FLOW TEST. INCLUDE FLOW TEST RESULTS FOR EACH RISER WITH HYDRAULIC CALCULATIONS. INCLUDE A 10% SAFETY FACTOR IN HYDRAULIC CALCULATIONS.

c. SPRINKLER SYSTEM SHALL BE APPROVED BY AUTHORITIES HAVING JURISDICTION.

d. SHOP DRAWINGS: FOR WET-PIPE SPRINKLER SYSTEMS. INCLUDE PLANS, ELEVATIONS, SECTIONS, DETAILS, AND ATTACHMENTS TO OTHER WORK.

e. DELEGATED DESIGN SUBMITTAL: FOR ALL SPRINKLER SYSTEMS, INCLUDING ANALYSIS DATA SIGNED AND SEALED BY THE QUALIFIED PROFESSIONAL ENGINEER RESPONSIBLE FOR THEIR PREPARATION. ENGINEER SHALL BE LICENSED IN THE STATE OF MISSOURI.

f. COORDINATION DRAWINGS: SPRINKLER SYSTEMS, DRAWN TO SCALE, ON WHICH THE ELECTRICAL, PLUMBING, HVAC, STRUCTURAL AND OTHER BUILDING SYSTEMS ARE SHOWN AND COORDINATED WITH EACH OTHER, USING INPUT FROM INSTALLERS OF THE ITEMS INVOLVED.

g. APPROVED SPRINKLER PIPING DRAWINGS: WORKING PLANS, PREPARED ACCORDING TO NFPA 13, THAT HAVE BEEN APPROVED BY AUTHORITIES HAVING JURISDICTION, INCLUDING HYDRAULIC CALCULATIONS.

4. EXISTING FIRE PROTECTION PIPING ARE BASED ON BEST AVAILABLE EXISTING DRAWINGS AND ARE SHOWN FOR INFORMATION ONLY. FP CONTRACTOR RESPONSIBLE FOR VERIFYING EXISTING CONDITIONS BEFORE BEGINNING WORK.

5. THIS CONTRACTOR IS RESPONSIBLE FOR SUBMITTING FULL COORDINATION AND LAYOUT DRAWINGS PER FIRE PROTECTION SPEC SECTION. COORDINATION SHOULD BE COMPLETED WITH ALL TRADES INCLUDED. CONSTRUCTION SHALL NOT BEGIN UNTIL COORDINATION DRAWINGS HAVE BEEN REVIEWED BY THE ENGINEER AND COR.
- 
- AREA TO BE CONNECTED TO EXISTING SPRINKLER ZONE IN SMOKE COMPARTMENT 2-1. REF. G104. CONNECT NEW AREA TO SPRINKLER ZONE #46 SERVING CLINIC TO THE WEST.
- 
- KEY PLAN LEVEL 2  
1" = 80'-0"
- 1 FIRE PROTECTION PLAN - SECOND FLOOR - BID DEDUCT #1  
1/8" = 1'-0"
- |              |  |          |                      |  |  |                           |  |
|--------------|--|----------|----------------------|--|--|---------------------------|--|
| CONSULTANTS: |  | OFFEROR: | ARCHITECT/ENGINEERS: | Drawing Title<br>FIRE PROTECTION PLAN - SECOND FLOOR - BID DEDUCT #1 | Project Title<br>EXPAND PHARMACY AND LOBBY | Project Number<br>589-334 | Office of Construction and Facilities Management<br>Department of Veterans Affairs |
|              |  |          |                      | Approved: Project Director   | Location<br>COLUMBIA, MO                   | Building Number<br>1      |  |
| Revisions:   |  |          |                      | Date<br>04/03/2018   | Checked<br>BOH                             | Drawn<br>FLB              |  |
| Date         |  |          |                      |  |  | Dwg. of --                |  |
- VA FORM 08-6231