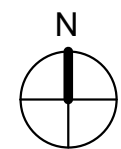
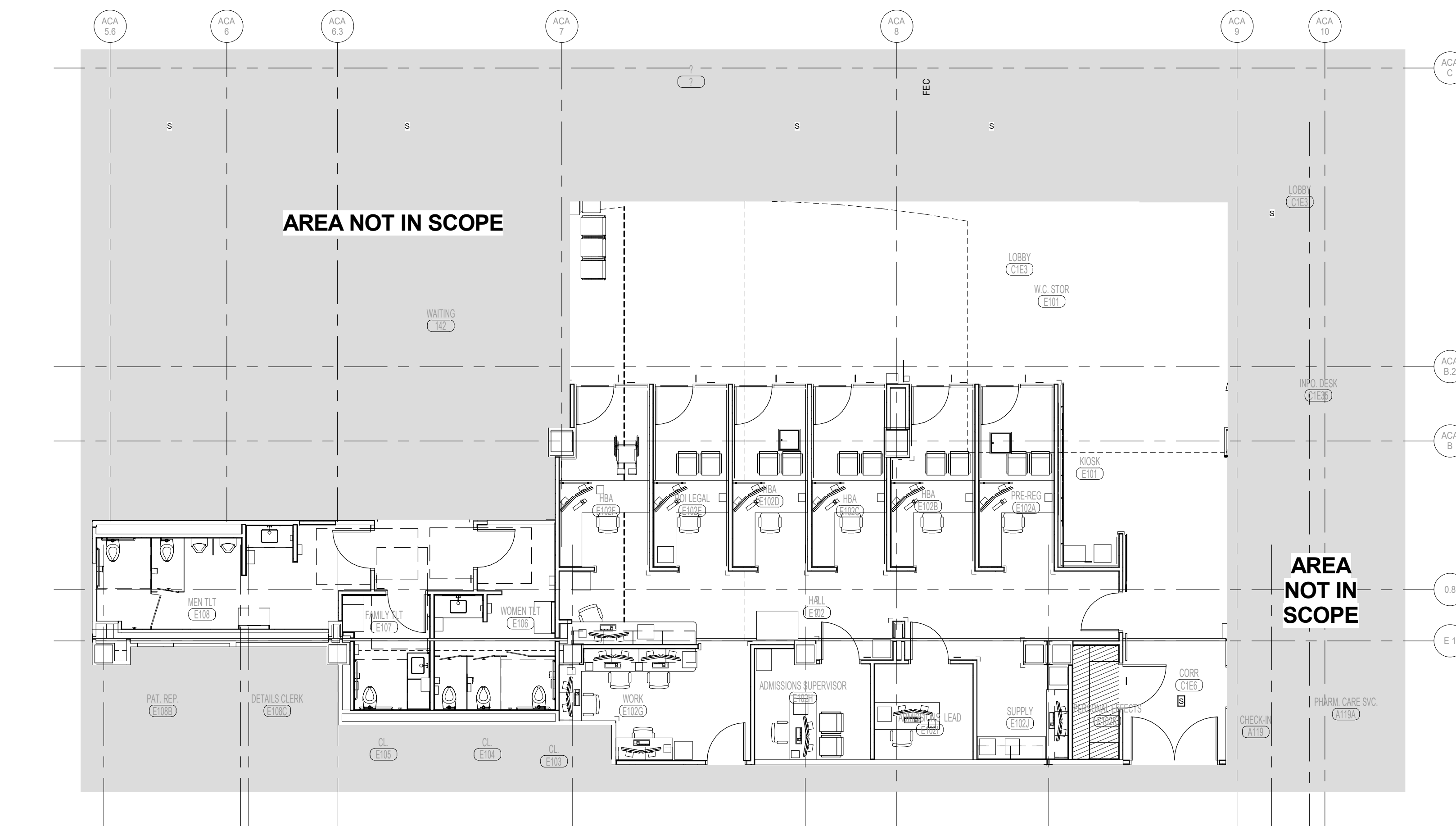
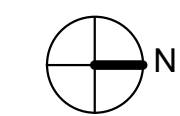
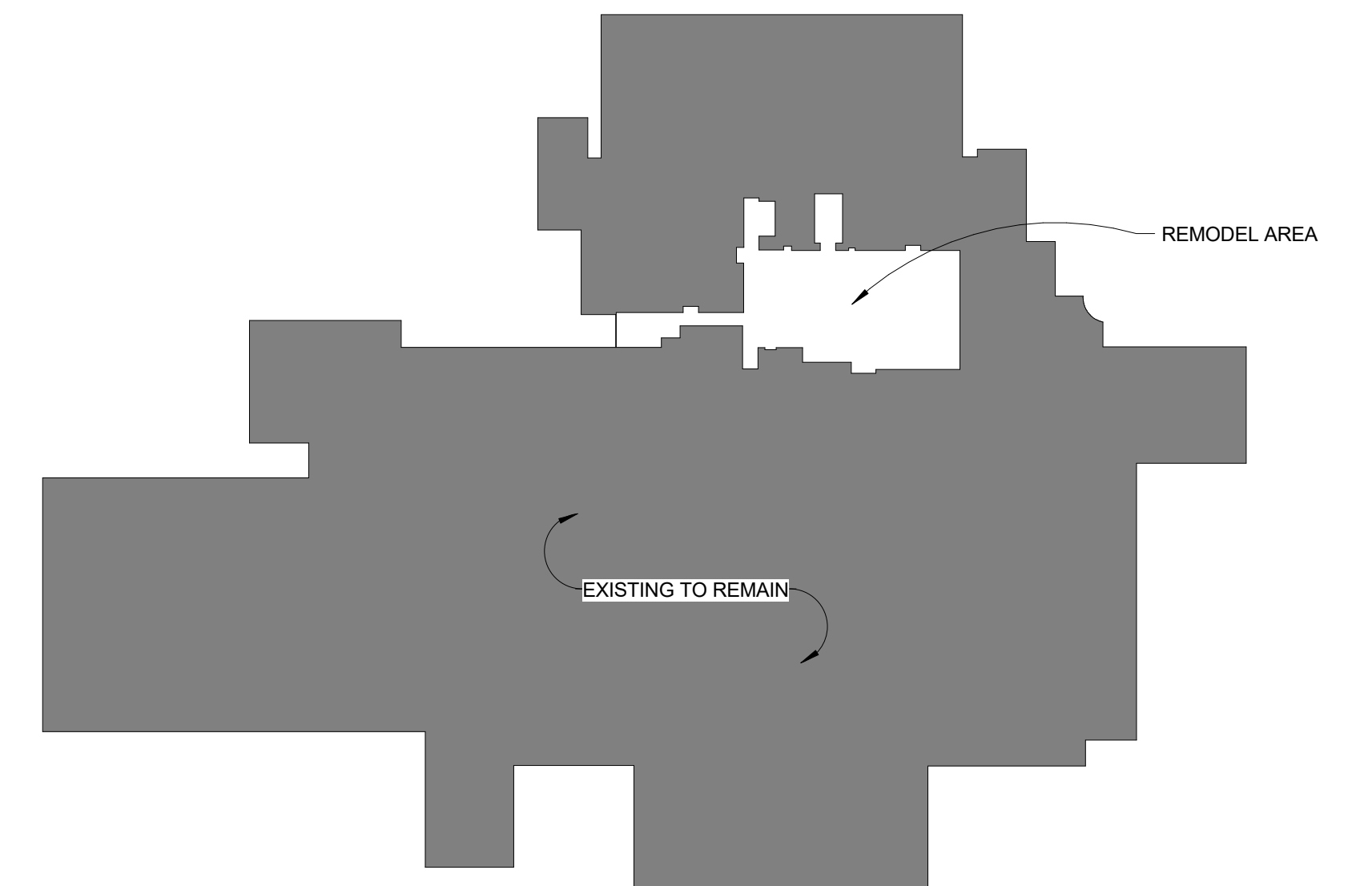


1. EXISTING PIPING AND FIRE PROTECTION ZONES ARE SHOWN FOR REFERENCE ONLY.
2. FIRE PROTECTION CONTRACTOR SHALL BE RESPONSIBLE FOR THE FOLLOWING:
 - a. REMOVE DISTRIBUTION PIPING BACK TO MAIN. REDISTRIBUTE AS REQUIRED TO ACCOMMODATE NEW FLOOR PLAN. (E) BRANCH PIPING MAY BE USED IF SIZE MATCHES CALCULATION REQUIREMENTS.
 - b. PROVIDE NEW HEADS AS REQUIRED TO ACCOMMODATE NEW FLOOR PLAN. REMOVED HEADS SHALL NOT BE REINSTALLED. ALL NEW HEADS ARE TO BE FM-APPROVED, QUICK RESPONSE TYPE. ALL HEADS WITHIN SMOKE COMPARTMENT SHALL MATCH. CONTRACTOR TO CONFIRM AND REPLACE HEADS IF NECESSARY TO ALL QUICK-RESPONSE TYPE.
 - c. FIRE SPRINKLER HEADS SHALL BE LOCATED IN CENTER OF TILE IN BOTH DIRECTIONS WHEN LOCATED IN LAY-IN CEILINGS. FIRE SPRINKLER HEADS SHALL BE LOCATED IN SYMMETRICAL PATTERNS IN ROOMS WITH HARD CEILINGS.
 - d. COORDINATE SPRINKLER HEAD LOCATIONS WITH ALL CEILING COMPONENTS INCLUDING ELECTRICAL & MECHANICAL COMPONENTS.
3. FIRE PROTECTION CONTRACTOR SHALL BE RESPONSIBLE FOR THE SPRINKLER HEAD LAYOUTS, CALCULATIONS, AND SEALED ENGINEERING DRAWINGS AS FOLLOWS:
 - a. DELEGATED DESIGN: DESIGN SPRINKLER SYSTEM (S), INCLUDING COMPREHENSIVE ENGINEERING ANALYSIS BY A QUALIFIED PROFESSIONAL ENGINEER, USING PERFORMANCE REQUIREMENTS AND DESIGN CRITERIA OF NFPA 13.
 - b. OBTAIN COPY OF FIRE-HYDRANT OR RISER FLOW TEST RECORDS OR, CONTACT LOCAL WATER AND/OR FIRE DEPARTMENTS TO PERFORM A FIRE-HYDRANT FLOW TEST. INCLUDE FLOW TEST RESULTS FOR EACH RISER WITH HYDRAULIC CALCULATIONS. INCLUDE A 10% SAFETY FACTOR IN HYDRAULIC CALCULATIONS.
 - c. SPRINKLER SYSTEM SHALL BE APPROVED BY AUTHORITIES HAVING JURISDICTION.
 - d. SHOP DRAWINGS: FOR WET-PIPE SPRINKLER SYSTEMS. INCLUDE PLANS, ELEVATIONS, SECTIONS, DETAILS, AND ATTACHMENTS TO OTHER WORK.
 - e. DELEGATED DESIGN SUBMITTAL: FOR ALL SPRINKLER SYSTEMS, INCLUDING ANALYSIS DATA SIGNED AND SEALED BY THE QUALIFIED PROFESSIONAL ENGINEER RESPONSIBLE FOR THEIR PREPARATION. ENGINEER SHALL BE LICENSED IN THE STATE OF MISSOURI.
 - f. COORDINATION DRAWINGS: SPRINKLER SYSTEMS, DRAWN TO SCALE, ON WHICH THE ELECTRICAL, PLUMBING, HVAC, STRUCTURAL AND OTHER BUILDING SYSTEMS ARE SHOWN AND COORDINATED WITH EACH OTHER, USING INPUT FROM INSTALLERS OF THE ITEMS INVOLVED.
 - g. APPROVED SPRINKLER PIPING DRAWINGS: WORKING PLANS, PREPARED ACCORDING TO NFPA 13, THAT HAVE BEEN APPROVED BY AUTHORITIES HAVING JURISDICTION, INCLUDING HYDRAULIC CALCULATIONS.
4. EXISTING FIRE PROTECTION PIPING ARE BASED ON BEST AVAILABLE EXISTING DRAWINGS AND ARE SHOWN FOR INFORMATION ONLY. FP CONTRACTOR RESPONSIBLE FOR VERIFYING EXISTING CONDITIONS BEFORE BEGINNING WORK.
5. **THIS CONTRACTOR IS RESPONSIBLE FOR SUBMITTING FULL COORDINATION AND LAYOUT DRAWINGS PER FIRE PROTECTION SPEC SECTION. COORDINATION SHOULD BE COMPLETED WITH ALL TRADES INCLUDED. CONSTRUCTION SHALL NOT BEGIN UNTIL COORDINATION DRAWINGS HAVE BEEN REVIEWED BY THE ENGINEER AND COR.**

1. REARRANGE HEAD LOCATIONS AS REQUIRED IN PROJECT AREA TO COORDINATE WITH NEW FLOOR PLAN LAYOUT.
2. ADJUST SPRINKLER HEAD HEIGHT AS REQUIRED WITH GYP BOARD INSTALLATION IN SLOPED CEILING.



① FIRE PROTECTION PLAN - FIRST FLOOR
1/8" = 1'-0"



KEY PLAN LEVEL 1
1" = 80'-0"

VA FORM 08-6231

GENERAL NOTES

1. VERIFY JOB SITE CONDITIONS AND DIMENSIONS BEFORE BEGINNING WORK. PLANS ARE SCHEMATIC IN NATURE. LAYOUT IS BASED ON BEST AVAILABLE INFORMATION. CONTRACTOR SHALL FIELD VERIFY EXISTING CONDITIONS AND DIMENSIONS.
2. NO PIPING, DUCTWORK, ETC. SHALL PENETRATE STRUCTURAL MEMBERS.
3. PROVIDE MISCELLANEOUS CUTTING, PATCHING AND REPAIRING OF FINISHES, ROOF, WALLS, ETC., AS REQUIRED TO ACCOMMODATE THE NEW WORK.
4. G.C. IS TO PATCH ANY OPENINGS IN CORRIDORS REQUIRED TO BE CONSTRUCTED TO LIMIT THE TRANSFER OF SMOKE AND IN SMOKE BARRIERS AS REQUIRED TO MEET CODE REQUIREMENTS. SEE ARCHITECTURAL DRAWINGS FOR LOCATIONS.
5. IT IS THE CONTRACTOR'S RESPONSIBILITY TO FIELD VERIFY EXACT LOCATION, CONFIGURATION AND ROUTING OF EXISTING SYSTEMS REQUIRED TO REMAIN IN OPERATION DURING THE PROJECT TO PREVENT DAMAGE DURING DEMOLITION AND PHASING.
6. REMOVE ALL EXISTING EQUIPMENT, DUCTWORK AND PIPING THAT IS NOT REQUIRED FOR A WORKING INSTALLATION.
7. COORDINATE ALL WORK WITH OTHER TRADES PRIOR TO INSTALLATION.
8. ALL CUTTING AND PATCHING SHALL BE CLOSELY COORDINATED WITH THE G.C.
9. COORDINATE ROUTING OF PLUMBING, AND HVAC PIPING WITH DUCTWORK, LIGHTS, ARCHITECTURAL CEILING AND STRUCTURAL ELEMENTS. PIPING SHALL RISE AND DROP, JOG OR OFFSET AS REQUIRED TO AVOID CONFLICTS. DUCTWORK SHALL TAKE PRECEDENCE OVER ALL PIPING, EXCEPT WHERE GRADE MUST BE MAINTAINED FOR DRAINAGE. REWORK OF INSTALLED WORK TO RESOLVE CONFLICTS ARISING FROM LACK OF COORDINATION SHALL NOT JUSTIFY AN INCREASE IN THE CONTRACT AMOUNT.
10. ALL PENETRATIONS THROUGH FIRE RATED ASSEMBLIES SHALL BE FIRE STOPPED BY THE TRADE MAKING THE PENETRATION. REFER TO ARCHITECTURAL DRAWINGS AND SPECIFICATIONS FOR REQUIREMENTS.
11. DO NOT ROUTE PIPING OR DUCTWORK OVER ELECTRICAL PANELS OR EQUIPMENT. PIPING OR DUCTWORK SHALL NOT BE ROUTED THROUGH ELECTRICAL ROOMS, TELECOM ROOMS, OR ELEVATOR EQUIPMENT ROOMS UNLESS SPECIFICALLY SERVING THAT ROOM. COORDINATE WITH E.C. PROVIDE WATERTIGHT DRIP PAN WITH DRAIN TO NEAREST APPROVED RECEPTOR WHERE REQUIRED.
12. COORDINATE SIZE AND LOCATION OF ACCESS DOORS IN CONSTRUCTION REQUIRED FOR ACCESS TO MECHANICAL EQUIPMENT WITH G.C.
13. ALL WORK IS TO CONFORM WITH APPLICABLE CODES AND STANDARDS.
14. COORDINATE ACCESS TO EQUIPMENT AND VALVES INSTALLED ABOVE 'HARD' CEILINGS AND IN MASONRY CHASES WITH GENERAL CONTRACTOR. PROVIDE LOCKING ACCESS DOORS FOR INSTALLATION BY CONTRACTOR AS REQUIRED TO SERVICE CONCEALED DAMPERS, VALVES AND EQUIPMENT.
15. REFER TO ARCH FOR PHASING PLAN AND ALLOWABLE WORK HOURS.
16. THESE DRAWINGS ARE ACCOMPANIED BY SPECIFICATIONS. REFER TO SPECIFICATIONS FOR FURTHER INFORMATION.
17. COMPLETE COORDINATION OF DRAWINGS SHALL BE REQUIRED BY PARAGRAPH "SUBMITTAL" IN SPECIFICATION SECTION 220511. CONSTRUCTION SHALL NOT START ON ANY SYSTEM UNTIL THE COORDINATION DRAWINGS HAVE BEEN APPROVED BY VA.
18. THIS IS A LIFE SAFETY BUILDING WHICH MEANS IT SHALL REMAIN REASONABLY OPERATIONAL IN THE CASE OF A SEISMIC EVENT. THEREFORE ALL STATIONARY EQUIPMENT ON THE FLOOR SHALL BE FIXED RIGIDLY TO THE STRUCTURE. ALL HANGING PIPING SHALL BE BRACED TO THE STRUCTURE. REFER TO SPECIFICATION SECTION 130541.

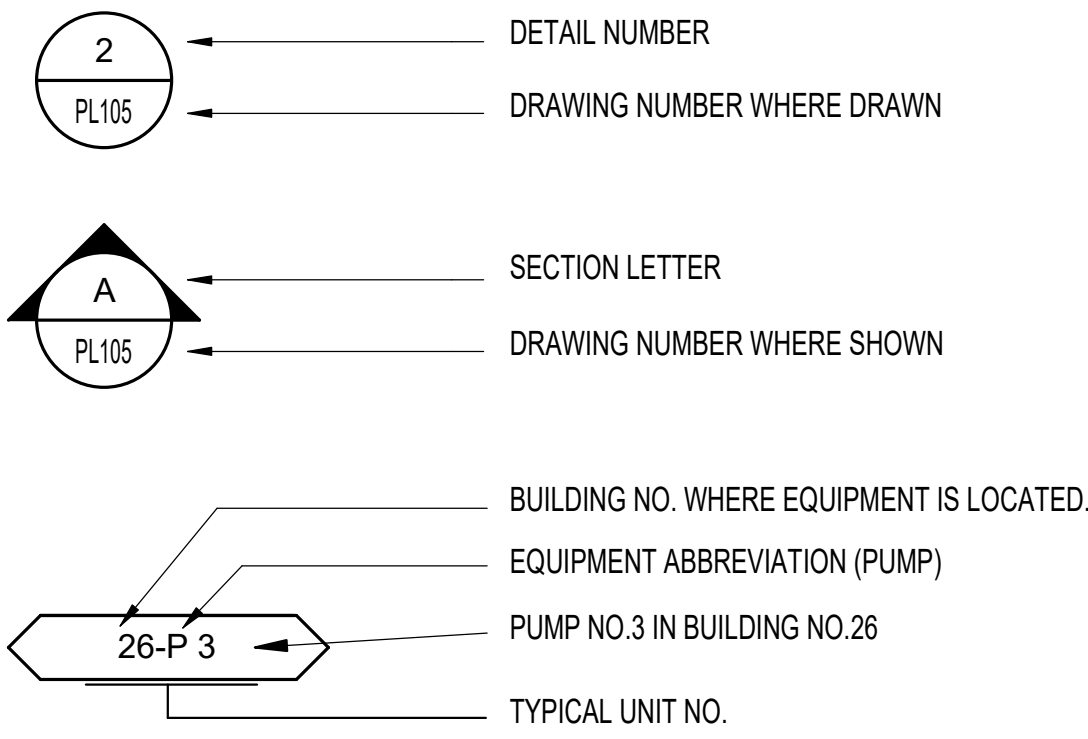
GENERAL DEMOLITION NOTES

1. VERIFY ALL EXISTING CONDITIONS PRIOR TO BEGINNING WORK. BRING ANY DISCREPANCIES FROM THE DRAWINGS AND NOTES TO THE ARCHITECT IMMEDIATELY. MINOR CHANGES IN THE SCOPE OF THE DEMOLITION WORK SHALL NOT JUSTIFY AN ADDITIONAL COST.
2. REMOVAL OF EXISTING FIXTURES AND EQUIPMENT WILL REQUIRE ISOLATING THE PIPING RISERS OR MAINS VIA SHUT-OFF VALVES. INSTALL NEW ISOLATION VALVES WHERE REQUIRED FOR COMPLETION OF WORK.
3. REMOVAL OF EXISTING PLUMBING FIXTURES AND EQUIPMENT, ETC. WILL REQUIRE CAPPING AND SEALING EXISTING MAINS OR BRANCHES AS NECESSARY AND REQUIRED TO ALLOW THE REMAINING SYSTEMS TO FULLY OPERATE WITHOUT DEGRADATION. CONTRACTOR SHALL PROVIDE PROTECTIVE PLASTIC DROP CLOTHS TO PROTECT THE EXISTING OCCUPIED AREAS AND EQUIPMENT FROM DUST AND DEBRIS DURING THE CONSTRUCTION WORK, AND SHALL CLEAN THE AREAS OF ALL CONSTRUCTION DIRT DAILY, AND UPON COMPLETION OF THE WORK. REFER TO GENERAL CONDITIONS AND DIVISION 1 SECTIONS IN THE SPECIFICATIONS.
4. ALL DRAINED PIPING RISERS AND MAINS SHALL BE REFILLED WITH PROPER FLUID AND PROPERLY VENTED BY THIS CONTRACTOR, ONCE NEW WORK HAS BEEN INSTALLED.
5. COORDINATE WITH GENERAL CONTRACTOR THE REMOVAL AND REPLACEMENT OF ALL EXISTING CEILINGS, WALLS, ETC. AS REQUIRED FOR MECHANICAL DEMOLITION WORK.
6. EXISTING PIPING AND EQUIPMENT, ETC., NOT TO BE UTILIZED IN THE COMPLETED BUILDING SHALL BE DISCONTINUED OR REMOVED AS REQUIRED. ALL ENDS OF DISCONTINUED PIPING SHALL BE CAPPED IN THE NEAREST WALL, CEILING OR FLOOR SO THAT THEY ARE COMPLETELY CONCEALED. OPENINGS LEFT IN WALLS, CEILINGS, ETC., WHERE EQUIPMENT AND PIPE, ETC., ARE REMOVED AND NOT REPLACED, SHALL BE PATCHED NEATLY WITH SIMILAR MATERIAL TO ADJACENT CONSTRUCTION. REFER TO DRAWINGS DELINEATING NEW WORK FOR ADDITIONAL INFORMATION REGARDING SYSTEMS OR PORTIONS OF SYSTEMS WHERE USE IS TO BE DISCONTINUED.
7. EXISTING PIPING, FIXTURES AND EQUIPMENT THAT ARE NOT TO BE REUSED SHALL BE REMOVED AND SHALL REMAIN THE PROPERTY OF THE OWNER IF THEY WISH TO RETAIN OWNERSHIP OF SAME. IF NOT, EQUIPMENT SHALL BECOME THE PROPERTY OF THIS CONTRACTOR AND SHALL BE REMOVED FROM THE SITE AS SOON AS PRACTICAL AND DISPOSED OF IN ACCORDANCE WITH APPLICABLE LAWS AND REGULATIONS.
8. ALL CUTTING AND CHANNELING OF EXISTING BUILDING SHALL BE ACCOMPLISHED IN A NEAT AND WORKMANLIKE MANNER WITHOUT REMOVAL OF EXCESS MATERIALS. THIS CONTRACTOR SHALL PATCH AND REPLACE WITH MATERIAL SIMILAR TO ADJACENT CONSTRUCTION.
9. WHERE EXISTING PIPING AND EQUIPMENT, ETC., THAT ARE TO BE UTILIZED IN THE COMPLETED PROGRAM CONFLICT WITH NEW CONSTRUCTION AND THE REQUIRED DEMOLITION, THEY SHALL BE RELOCATED AND RECONNECTED TO MAINTAIN THE DESIRED SERVICE.
10. PORTIONS OF EXISTING SYSTEMS MAY BE SHOWN FOR CLARITY EVEN THOUGH IT MAY NOT BE NECESSARY TO MODIFY OR REVISE THEM. ALL EXISTING SYSTEMS ARE SHOWN BASED ON ORIGINAL OR REMODEL BUILDING DRAWINGS. CONTRACTOR TO VERIFY ALL EXISTING CONDITIONS.
11. ALL WORK MUST BE COORDINATED AND SCHEDULED WITH THE OWNER AND OCCUPANTS OF THIS BUILDING SO AS TO PROVIDE THE LEAST AMOUNT OF DISRUPTION OF BUILDING ACTIVITIES AS POSSIBLE.
12. ALL ACCESSIBLE ABANDONED PIPING AND DUCTWORK SHALL BE REMOVED AND PROPERLY DISPOSED OF.

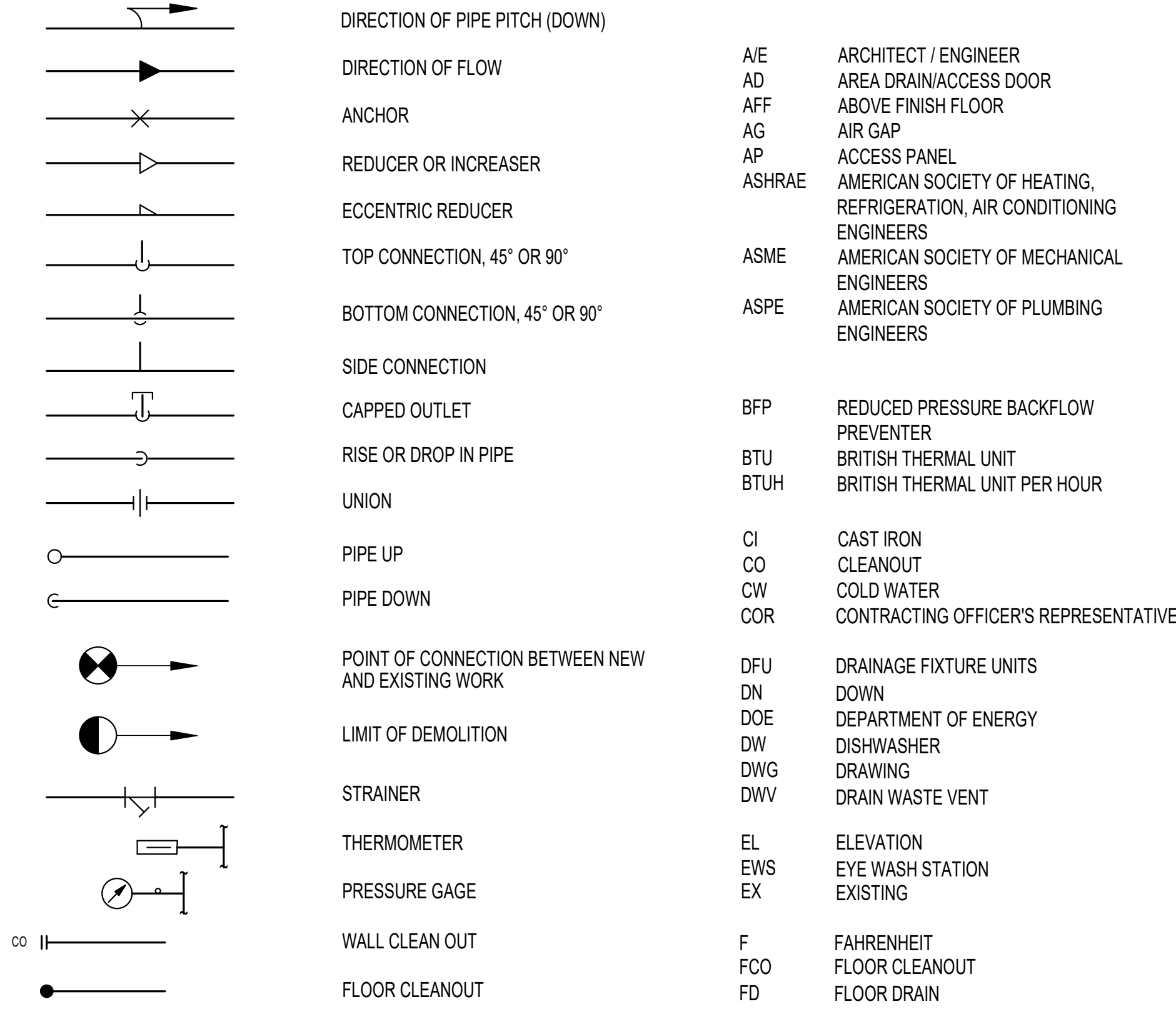
PLUMBING SHEET INDEX

PP001	PLUMBING COVER SHEET
PD101	BASEMENT AND FIRST FLOOR PLUMBING DEMOLITION PLANS
PL101	BASEMENT AND FIRST FLOOR PLUMBING PLANS
PL301	PLUMBING RISER DIAGRAMS
PL501	PLUMBING SCHEDULES

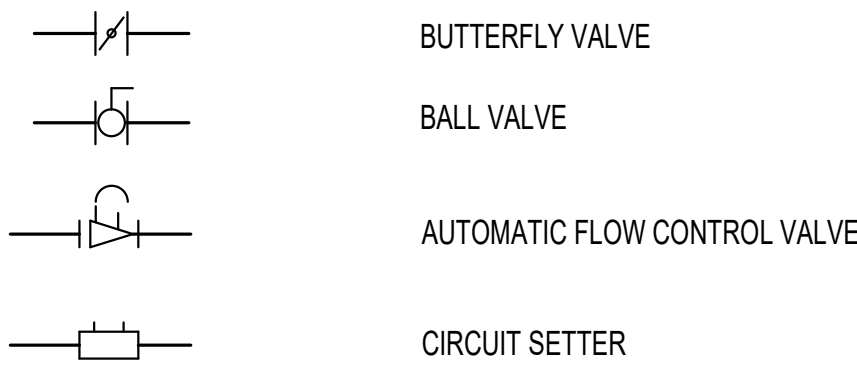
DRAWING SYMBOLS



GENERAL PLUMBING SYMBOLS



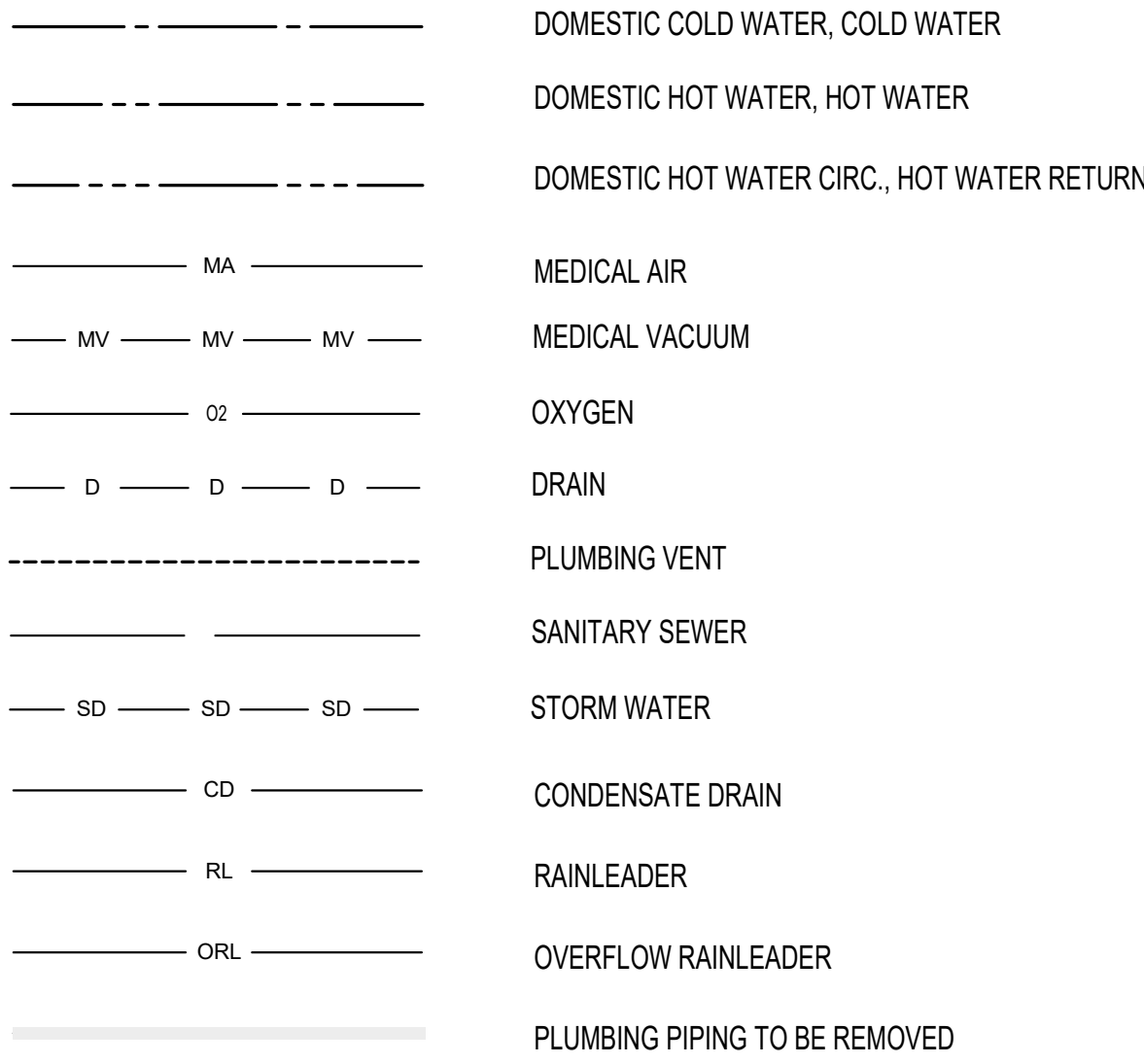
PLUMBING VALVE SYMBOLS



PLUMBING ABBREVIATIONS

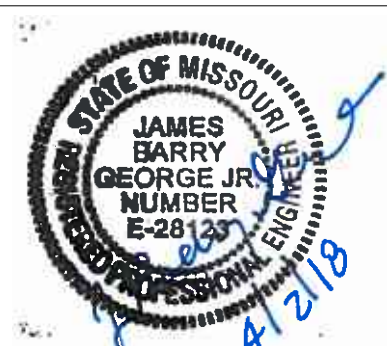
A/E	ARCHITECT / ENGINEER	H&CW	HOT AND COLD WATER
AD	AREA DRAIN/ACCESS DOOR	HB	HOSE BIBB
AFF	ABOVE FINISH FLOOR	HD	HUB DRAIN
AG	AIR GAP	HP	HORSEPOWER
AP	ACCESS PANEL	HW	DOMESTIC HOT WATER
ASHRAE	AMERICAN SOCIETY OF HEATING, REFRIGERATION, AIR CONDITIONING ENGINEERS	HWC	DOMESTIC HOT WATER CIRC
ASME	AMERICAN SOCIETY OF MECHANICAL ENGINEERS	HWCP	DOMESTIC HOT WATER CIRCULATION PUMP
ASPE	AMERICAN SOCIETY OF PLUMBING ENGINEERS	HYD	HYDRANT
		ID	INSIDE DIAMETER
		IPC	INTERNATIONAL PLUMBING CODE
		IW	INDIRECT WASTE
		LAV	LAVATORY
BFP	REDUCED PRESSURE BACKFLOW PREVENTER	LBS/HR	POUNDS PER HOUR
BTU	BRITISH THERMAL UNIT	MA	MEDICAL AIR
BTUH	BRITISH THERMAL UNIT PER HOUR	MED	MEDICAL
		MV	MEDICAL VACUUM
CI	CAST IRON	NTS	NOT TO SCALE
CO	CLEANOUT	O2	OXYGEN
CW	COLD WATER	OD	OUTSIDE DIAMETER
COR	CONTRACTING OFFICER'S REPRESENTATIVE	OFD	OVERFLOW DRAIN
DFU	DRAINAGE FIXTURE UNITS	ORL	OVERFLOW RAIN LEADER
DN	DOWN		
DOE	DEPARTMENT OF ENERGY	PDI	PLUMBING AND DRAINAGE INSTITUTE
DW	DISHWASHER	PSI	POUNDS PER SQUARE INCH
DWG	DRAWING		
DWV	DRAIN WASTE VENT	RD	ROOF DRAIN
EL	ELEVATION	RL	ROOF LEADER
EWS	EYE WASH STATION	SAN	SANITARY SEWER
EX	EXISTING	SS	STAINLESS STEEL
F	FAHRENHEIT	SW	STORM WATER
FCO	FLOOR CLEANOUT		
FD	FLOOR DRAIN	TD	TRENCH DRAIN
FS	FLOOR SINK	TEMP	TEMPERATURE
FU	FIXTURE UNITS	TMV	THERMOSTATIC MIXING VALVE
		TYP	TYPICAL
GAL	GALLON	V	VENT
GPH	GALLONS PER HOUR	VAC	VACUUM
GPM	GALLONS PER MINUTE	VS	VENT STACK
		VTR	VENT THROUGH ROOF
		W	WASTE
		WC	WATER CLOSET
		WCO	WALL CLEANOUT
		WH	WALL HYDRANT
		WHA	WATER HAMMER ARRESTER
		WSFU	WATER SUPPLY FIXTURE UNITS

PLUMBING PIPING SYMBOLS



CONSULTANTS:

-



ARCHITECT/ENGINEERS:

m
A
R
C
H
I
T
E
C
T
U
R
E



Drawing Title
PLUMBING COVER SHEET

Approved: Project Director

Project Title
RENOVATE MAIN LOBBY

Project Number
589-334

Building Number

Location
Columbia, Missouri

Date
04/03/2018

Checked
JAC

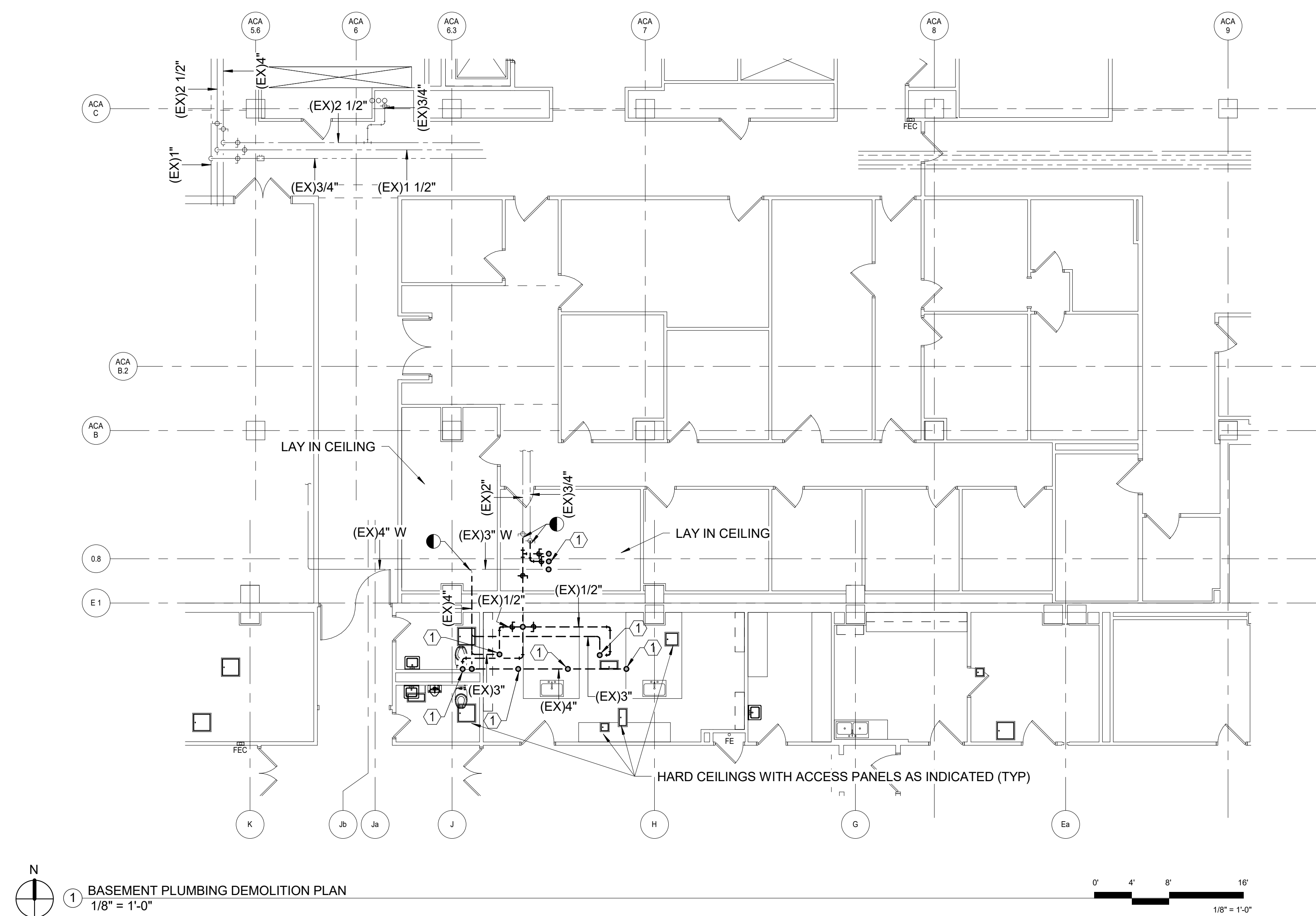
Drawn
JGA

Drawing Number
PP001

Dwg.

Office of
Construction
and Facilities
Management



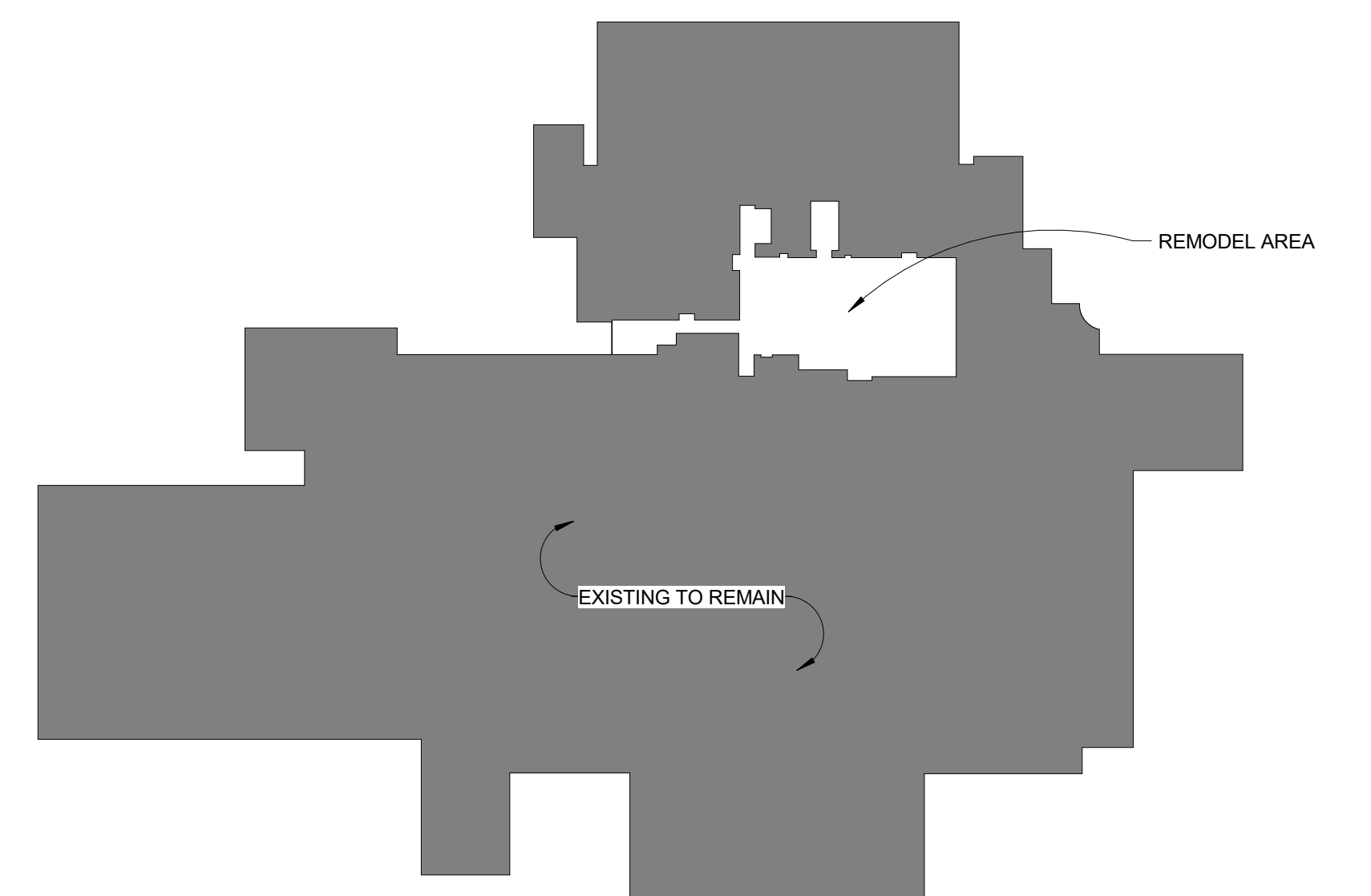
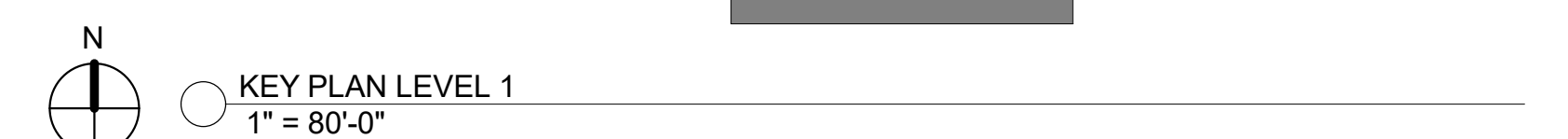
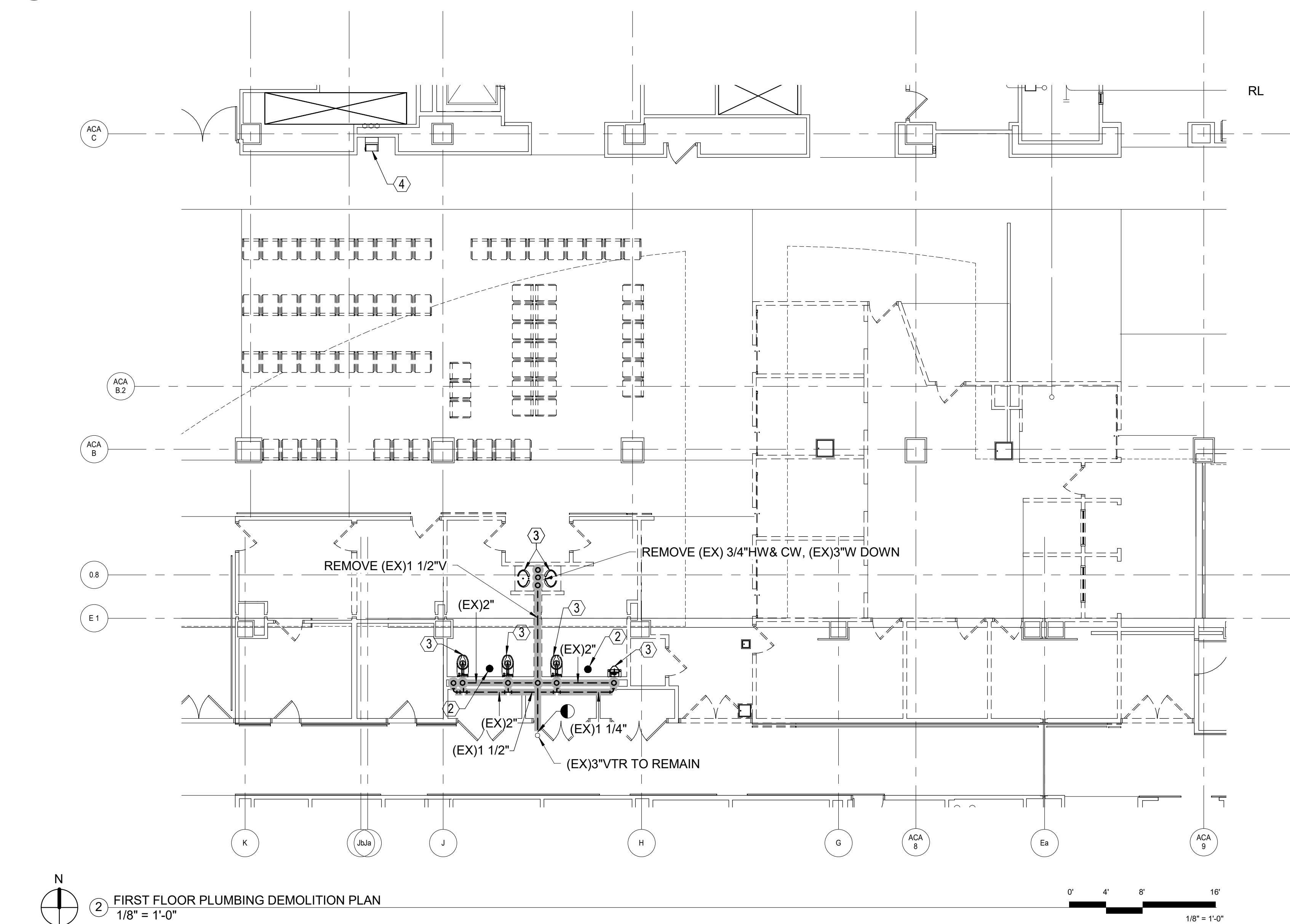


- ### GENERAL NOTES

1. PLANS ARE SCHEMATIC IN NATURE. LAYOUT IS BASED ON BEST AVAILABLE INFORMATION. CONTRACTOR SHALL FIELD VERIFY EXISTING CONDITIONS AND DIMENSIONS.
2. ALL CUTTING, PATCHING AND DEMOLITION WORK SHALL BE CLOSELY COORDINATED WITH THE EXISTING CONDITIONS AND THE REQUIRED NEW WORK. G.C. SHALL PATCH AND FINISH PENETRATIONS OF EXISTING SURFACES TO MATCH ADJACENT SURFACES.
3. ALL PIPING TO BE REMOVED SHALL BE CAPPED AT THE MAINS, AND HANGERS REMOVED, UNLESS OTHERWISE NOTED.
4. ALL ACCESSIBLE ABANDONED PIPING SHALL BE REMOVED.
5. REFER TO ARCHITECTURAL SPECIFICATIONS AND PLANS FOR PHASING OF DEMOLITION AND NEW WORK. ADJACENT AREAS ARE 100% OCCUPIED AND CONTRACTOR SHALL WORK CLOSELY WITH OWNER TO SCHEDULE DEMOLITION AND CONSTRUCTION TO BE AS LEAST DISRUPTIVE AS POSSIBLE.
6. NO DEMO WORK TO BE DONE ON SATURDAY NIGHT AND/OR WEEKENDS, OR AS DIRECTED BY THE COR.
7. COMPLETE COORDINATION OF DRAWINGS SHALL BE REQUIRED BY PARAGRAPH "SUBMITTAL" IN SPECIFICATION SECTION 220511. CONSTRUCTION SHALL NOT START ON ANY SYSTEM UNTIL THE COORDINATION DRAWINGS HAVE BEEN APPROVED BY VA.

PLAN NOTES

- 1 REMOVE WATER AND WASTE LINE UP TO FIXTURE BEING REMOVED. CAP AT MAIN.
- 2 REMOVE (EX) FLOOR DRAIN AND WASTE PIPING.
- 3 REMOVE (EX) PLUMBING FIXTURE AND ASSOCIATED PIPING.
- 4 REMOVE (EX) DRINKING FOUNTAIN. LEAVE PIPING ROUGH-INS FOR RECONNECTION.



CONSULTANTS:

22



ARCHITECT/ENGINEERS:



ARCHITECTURE



PROFESSIONAL ENGINEERING CONSULTANTS, P.A.

	Drawing Title
--	---------------

BASEMENT AND FIRST FLOOR PLUMBING DEMOLITION PLANS

Approved: Project Director

Project Title

RENOVATE MAIN LOBBY

Project Number

589.334

Building Number

	Location

Columbia, Missouri

Date

04/03/2018

Checked

JAC

Drawn

JGA

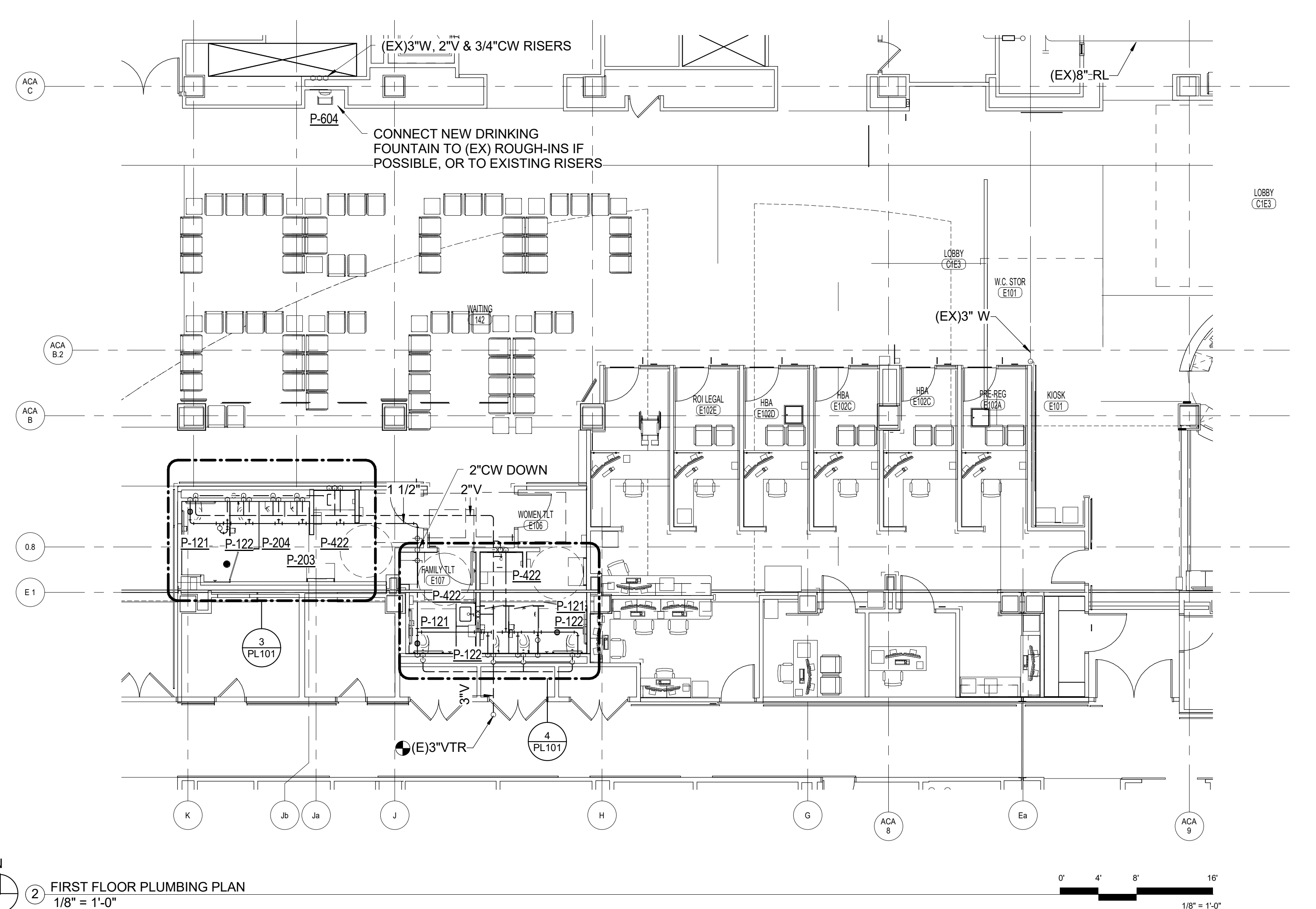
Drawing Number

Drawing Number _____

PL

Office of
Construction
and Facilities
Management





1/2"HW FROM BELOW

1/2"HW FROM BELOW

1 1/2"V

2" FD-C

TRAP PRIMER

ABV. CLG.

WHA-B

1 1/2"V

1 1/2"V

1 1/4"

1/2"CW DOWN

WHA-A

4"W DOWN

2"V

2"V

4"W IN CHASE

④ ENLARGED PLUMBING PLAN - FAMILY Y & WOMEN TL.T.

0' 2' 4' 6'

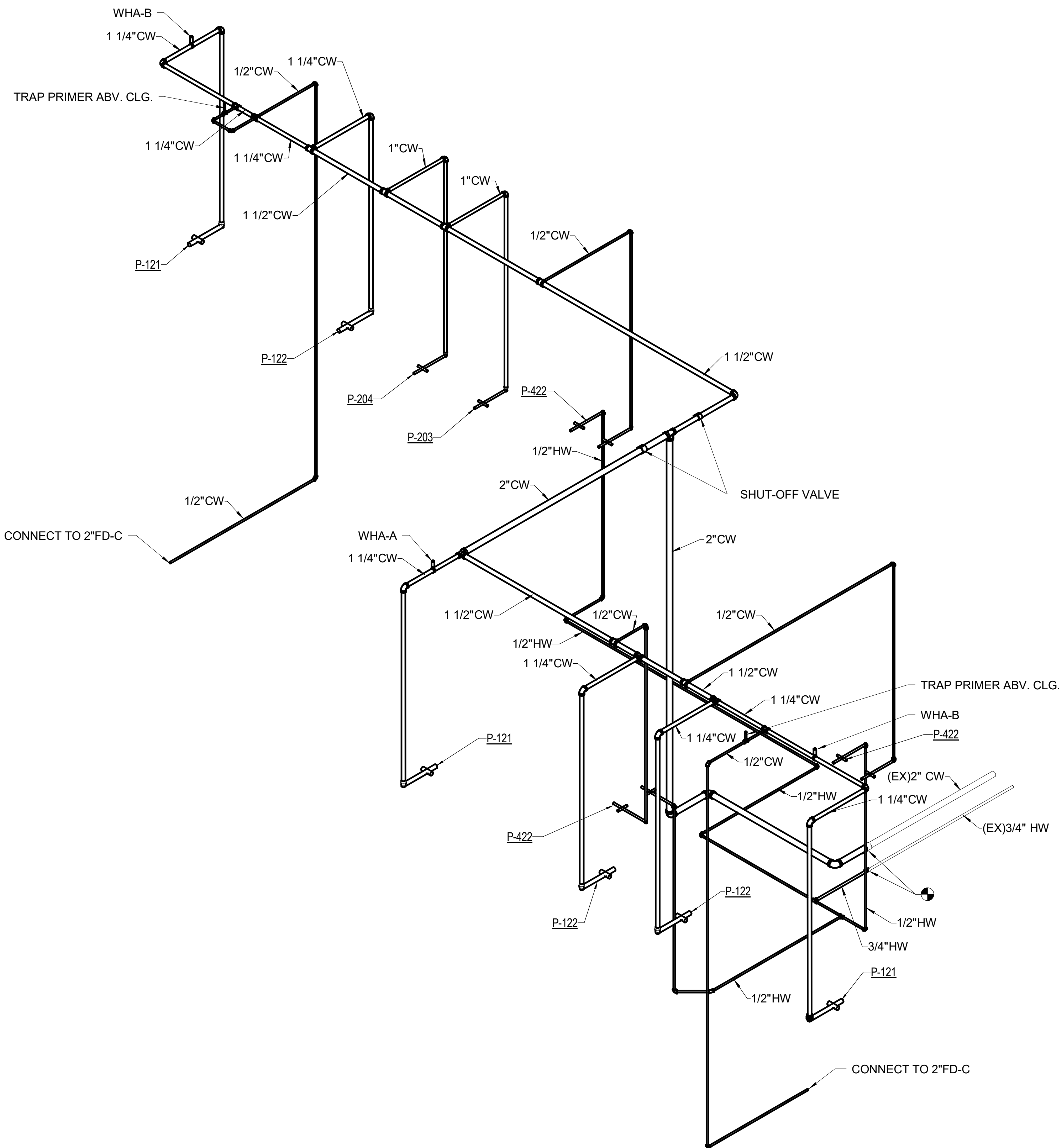
1/4" = 1'-0"

165" x 130"

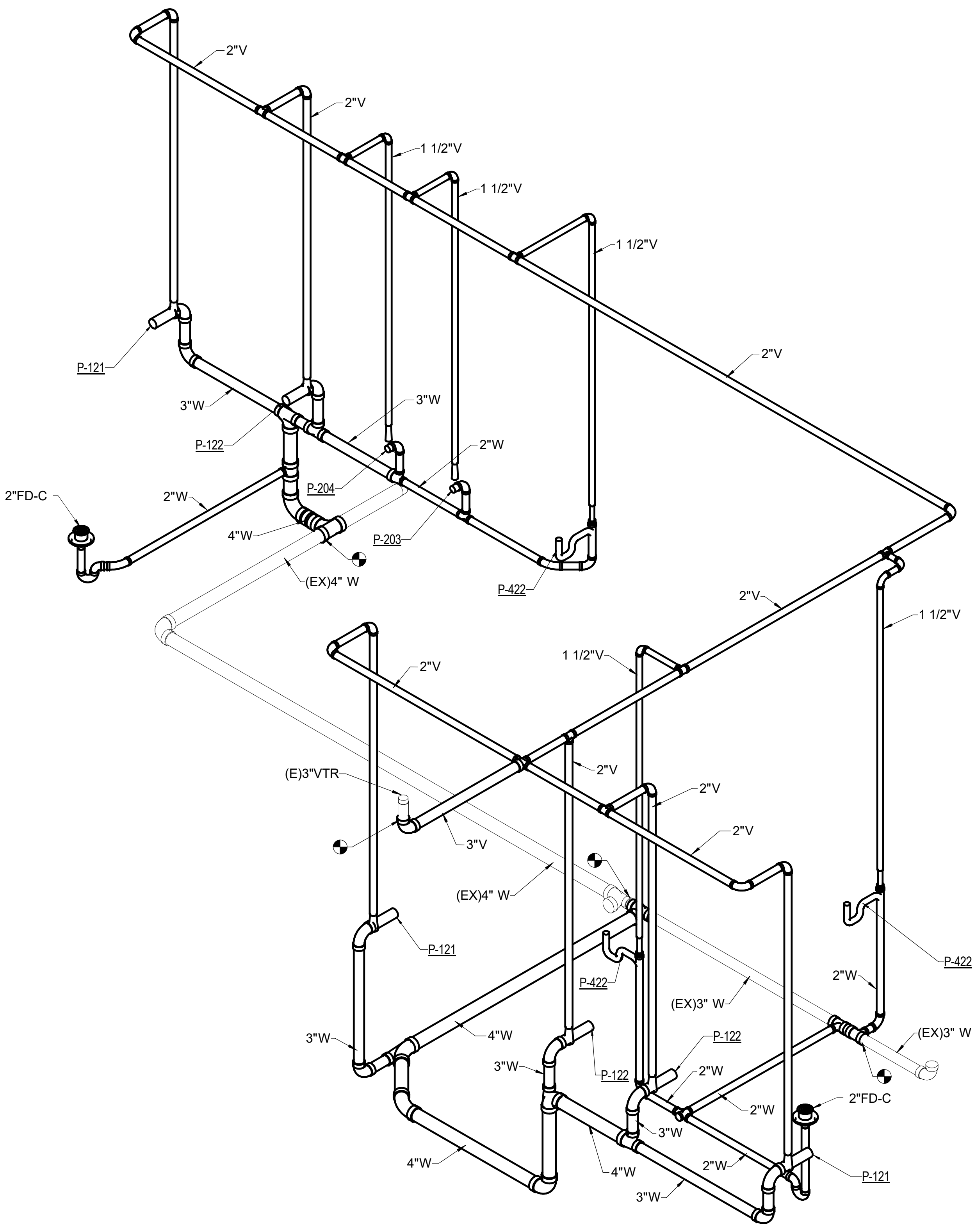
EXISTING TO REMAIN

 Department of
Veterans Affairs

one eighth inch = one foot
one quarter inch = one foot
three eighths inch = one foot
one half inch = one foot
three quarters inch = one foot
one inch = one foot
one and one half inches = one foot
two inches = one foot
three inches = one foot
four inches = one foot
five inches = one foot
six inches = one foot
seven inches = one foot
eight inches = one foot
nine inches = one foot
ten inches = one foot
eleven inches = one foot
twelve inches = one foot
thirteen inches = one foot
fourteen inches = one foot
fifteen inches = one foot
sixteen inches = one foot
seventeen inches = one foot
eighteen inches = one foot
nineteen inches = one foot
twenty inches = one foot
twenty one inches = one foot
twenty two inches = one foot
twenty three inches = one foot
twenty four inches = one foot
twenty five inches = one foot
twenty six inches = one foot
twenty seven inches = one foot
twenty eight inches = one foot
twenty nine inches = one foot
thirty inches = one foot
thirty one inches = one foot
thirty two inches = one foot
thirty three inches = one foot
thirty four inches = one foot
thirty five inches = one foot
thirty six inches = one foot
thirty seven inches = one foot
thirty eight inches = one foot
thirty nine inches = one foot
forty inches = one foot
forty one inches = one foot
forty two inches = one foot
forty three inches = one foot
forty four inches = one foot
forty five inches = one foot
forty six inches = one foot
forty seven inches = one foot
forty eight inches = one foot
forty nine inches = one foot
fifty inches = one foot
fifty one inches = one foot
fifty two inches = one foot
fifty three inches = one foot
fifty four inches = one foot
fifty five inches = one foot
fifty six inches = one foot
fifty seven inches = one foot
fifty eight inches = one foot
fifty nine inches = one foot
sixty inches = one foot
sixty one inches = one foot
sixty two inches = one foot
sixty three inches = one foot
sixty four inches = one foot
sixty five inches = one foot
sixty six inches = one foot
sixty seven inches = one foot
sixty eight inches = one foot
sixty nine inches = one foot
seventy inches = one foot
seventy one inches = one foot
seventy two inches = one foot
seventy three inches = one foot
seventy four inches = one foot
seventy five inches = one foot
seventy six inches = one foot
seventy seven inches = one foot
seventy eight inches = one foot
seventy nine inches = one foot
eighty inches = one foot
eighty one inches = one foot
eighty two inches = one foot
eighty three inches = one foot
eighty four inches = one foot
eighty five inches = one foot
eighty six inches = one foot
eighty seven inches = one foot
eighty eight inches = one foot
eighty nine inches = one foot
ninety inches = one foot
ninety one inches = one foot
ninety two inches = one foot
ninety three inches = one foot
ninety four inches = one foot
ninety five inches = one foot
ninety six inches = one foot
ninety seven inches = one foot
ninety eight inches = one foot
ninety nine inches = one foot
one hundred inches = one foot



2 DOMESTIC WATER RISER DIAGRAM
NOT TO SCALE



1 SANITARY WASTE AND VENT RISER DIAGRAM
NOT TO SCALE

<div>Revisions:</div> <div>Date</div>		CONSULTANTS: <div></div>		<div><div>STATE OF MISSOURI JAMES BARRY GEORGE JR. NUMBER E-25124 PLUMBING 4/2/18</div></div> <div>ARCHITECT/ENGINEERS: <div><div>m</div><div>ARCHITECTURE</div></div><div><div>PEC</div><div>PROFESSIONAL ENGINEERING CONSULTANTS, P.A.</div></div></div>		<div>Drawing Title PLUMBING RISER DIAGRAMS</div> <div>Approved: Project Director</div>		<div>Project Title RENOVATE MAIN LOBBY</div> <div>Location Columbia, Missouri</div> <div>Date 04/03/2018</div> <div>Checked JAC</div> <div>Drawn JGA</div>		<div>Project Number 589-334</div> <div>Building Number</div> <div>Drawing Number PL301</div> <div>Dwg.</div>		<div>Office of Construction and Facilities Management</div> <div>Department of Veterans Affairs</div>	
---------------------------------------	--	-----------------------------	--	--	--	--	--	--	--	--	--	---	--



COMPLETE LAYOUT DRAWINGS SHALL BE REQUIRED BY SPECIFICATION
PARAGRAPH, SUBMITTALS. CONSTRUCTION WORK SHALL NOT START ON ANY
SYSTEM UNTIL THE LAYOUT DRAWINGS HAVE BEEN APPROVED BY VA.

BASED ON ELKAY EZSGRWSS WALL HUNG, WHEELCHAIR ACCESSIBLE, WATER COOLER WITH SENSOR ACTIVATED BOTTLE FILLING STATION, SIDE AND FRONT PUSHBAR ACTIVATED BUBBLER, STAINLESS STEEL FINISH, CAPACITY OF 8 GPH OF 50 DEGREE WATER AT ARI CONDITIONS.

		CONSULTANTS:		ARCHITECT/ENGINEERS:	Drawing Title	Project Title	Project Number	Office of Construction and Facilities Management
		--		m HEG A R C H I T E C T U R E	PLUMBING SCHEDULES	RENOVATE MAIN LOBBY	589-334	
							Building Number	
						Location	Drawing Number	
					Approved: Project Director	Columbia, Missouri	PL501	
					Date	Checked	Drawn	Dwg.
						04/03/2018	JAC	JGA
Revisions:	Date							