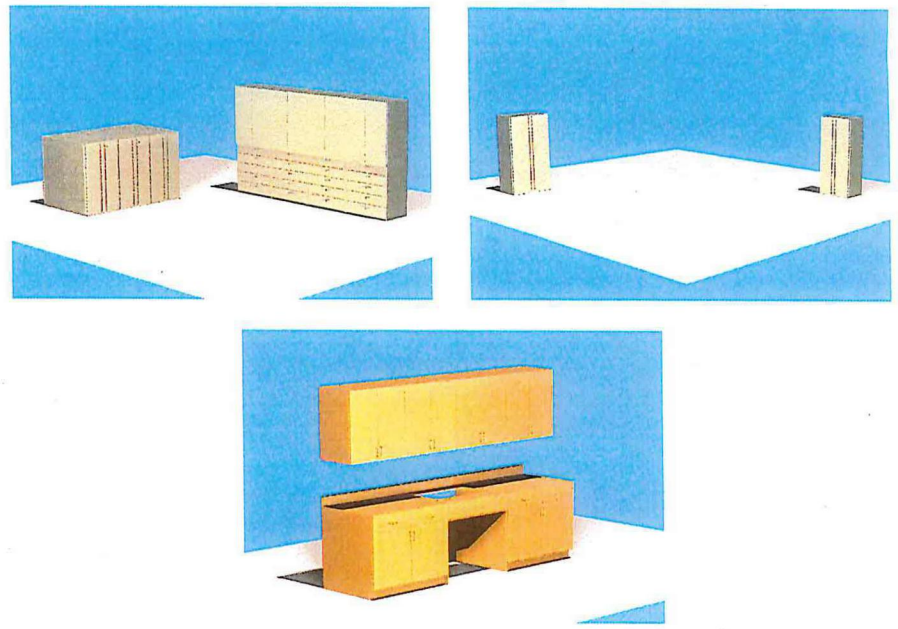
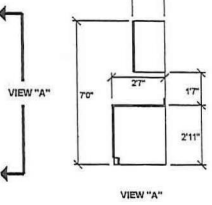
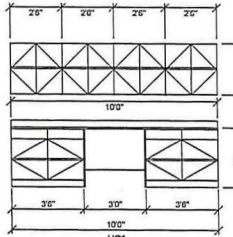


- NOTES:
1. EACH U2 DRAWER TO HAVE (4) FRONT TO BACK DIVIDERS.
  2. U2 UNITS TO HAVE BIN FRONTS ON SLANTED TOP (4) SHELVES.
  3. TOTAL SHELVING WEIGHT (EMPTY): 2,574.69 LBS.



Filing Capacity	
Items not assigned to a Position	
Actual LFI	2,037*
Nominal LFI	2,121*
Actual LFF	1,099*
Nominal LFF	1,170*
<input type="checkbox"/> Include Existing	

COLOR SELECTION

APPROVED BY: \_\_\_\_\_

PRINT NAME: \_\_\_\_\_

Project Name:  
**Veterans Affairs Medical Center**

Saved Date: 09/05/2017	Project No: 16975-4POST
Printed Date: 09/05/2017	Revision: R2
Scale: 1:70	Total Actual LFI: 2037 LFI
Rep:	Drawn by: J.M.G.
	Sheet No: 1 of 1