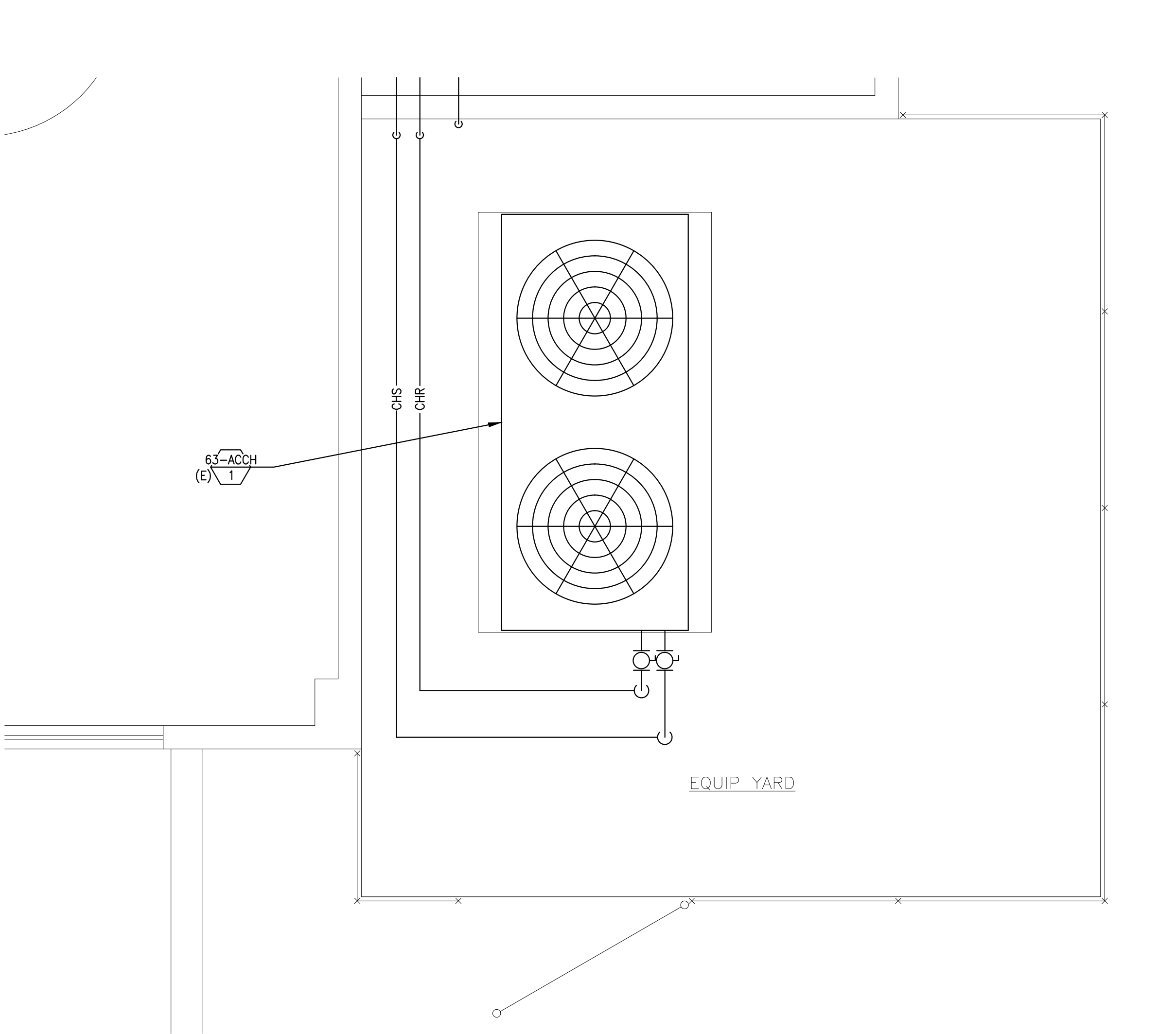
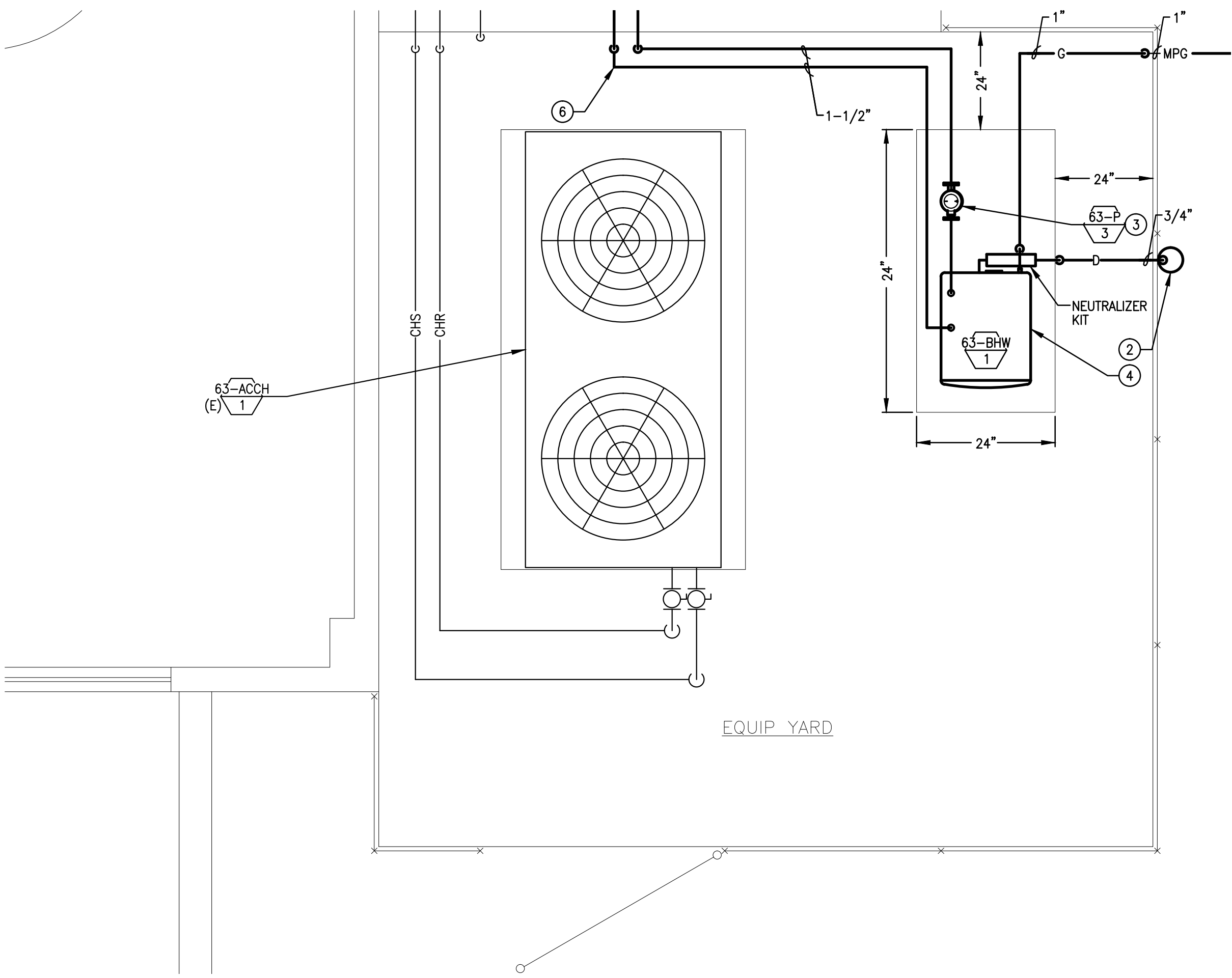


three inches = one foot
one and one half inches = one foot
one inch = one foot
one quarter inch = one foot
three quarters inch = one foot
one half inch = one foot
three eighths inch = one foot
one eighth inch = one foot
one eighth inch = one foot



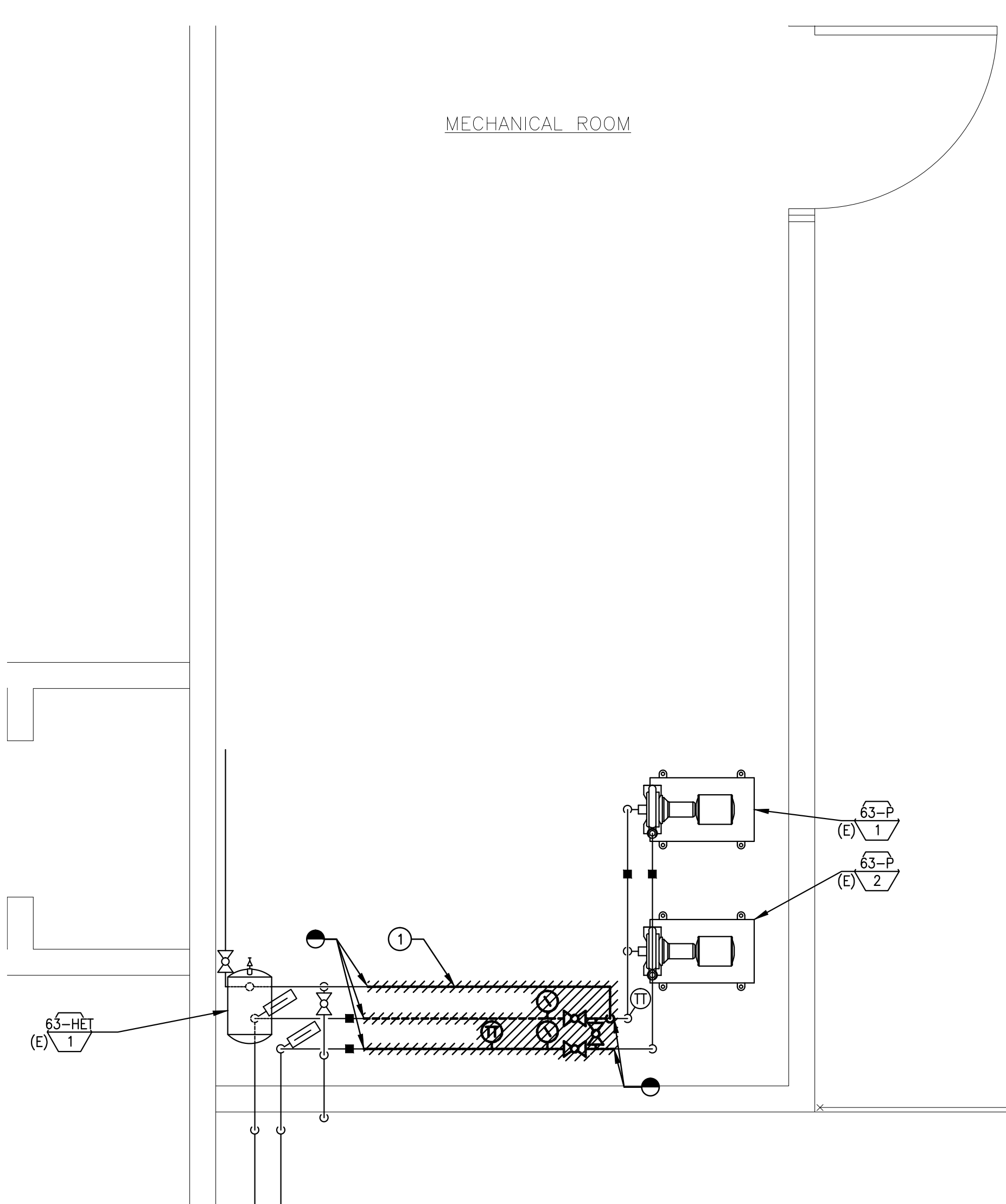
EQUIPMENT YARD MECHANICAL DEMOLITION PLAN

SCALE: 1/2" = 1'-0"



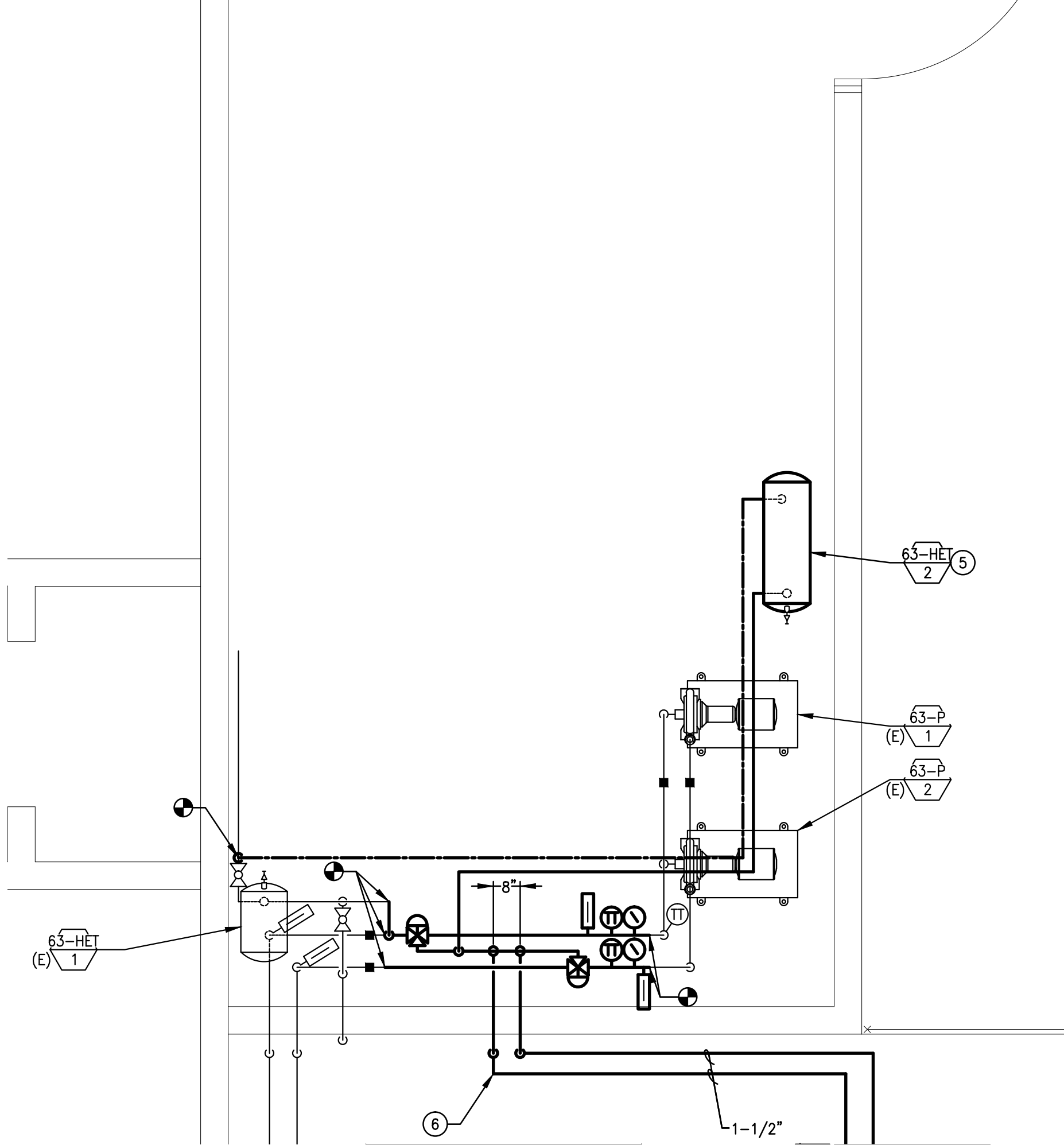
EQUIPMENT YARD MECHANICAL PLAN

SCALE: 1/2" = 1'-0"



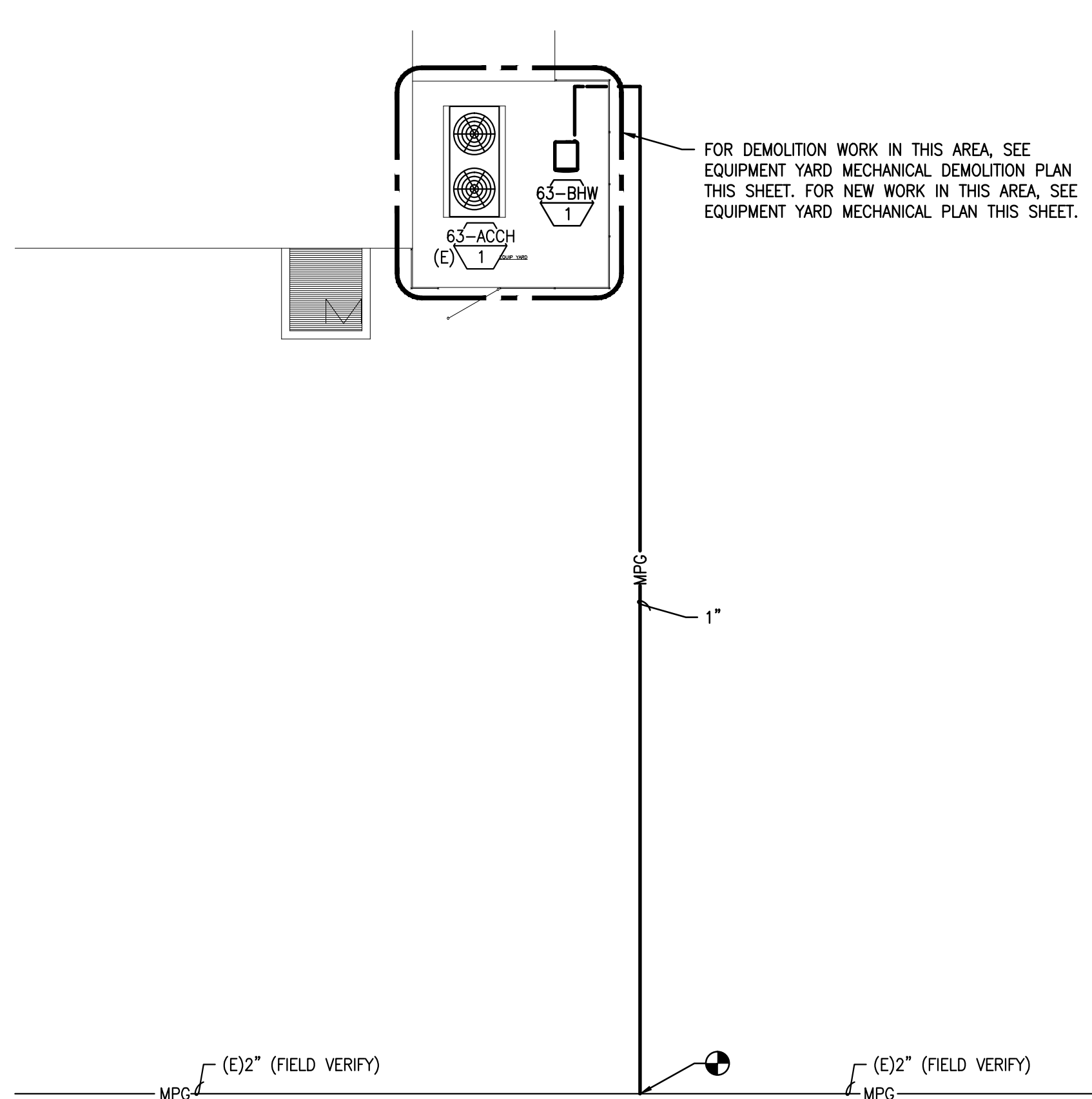
MECHANICAL ROOM DEMOLITION PLAN

SCALE: 1/2" = 1'-0"



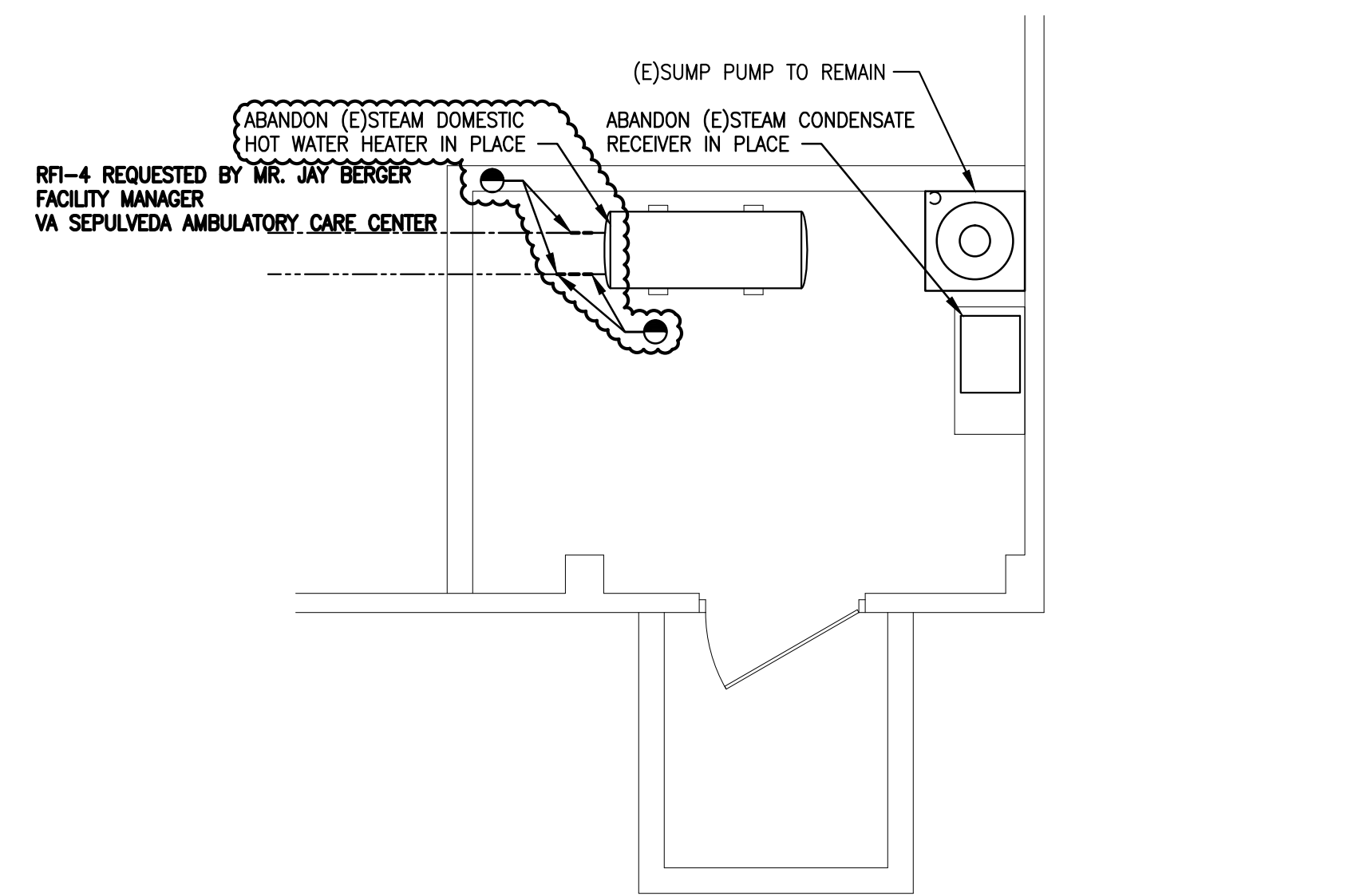
MECHANICAL ROOM PLAN

SCALE: 1/2" = 1'-0"



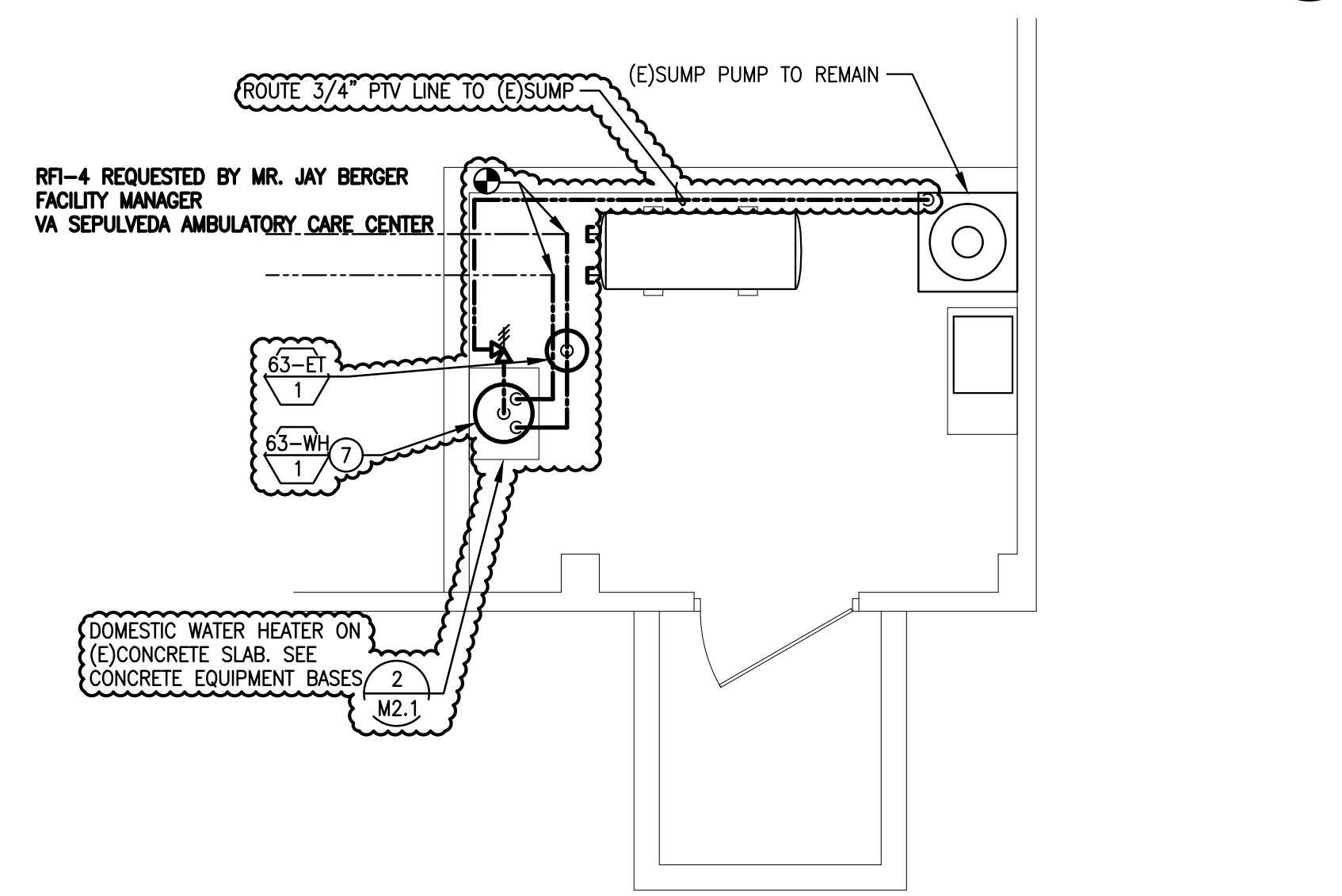
SITE MECHANICAL PLAN - MEDIUM PRESSURE NATURAL GAS

SCALE: 1/4" = 1'-0"



MECHANICAL DEMOLITION PLAN - BASEMENT

SCALE: 1/4" = 1'-0"



MECHANICAL PLAN - BASEMENT

SCALE: 1/4" = 1'-0"

BUILDING 63 SCOPE OF WORK

1. THE NEW HEATING HOT WATER (HHW) SYSTEM WILL INTERCONNECT WITH THE EXISTING CHILLED WATER SYSTEM TO PROVIDE A 2-PIPE HEATING HOT WATER AND CHILLED WATER SYSTEM.
2. INSTALL TWO 2-WAY VALVES TO ISOLATE THE TWO DIFFERENT OPERATIONAL MODES.
3. THE EXISTING CONTROL VALVES AND CONTROLS ARE TO REMAIN.
4. UTILIZE THE EXISTING CW SECONDARY PUMP FOR BOTH HEATING AND COOLING OPERATION.
5. THE CONDENSING BOILER WILL HAVE A DEDICATED PRIMARY LOOP PUMP AND WILL OPERATE AT A REDUCED TEMPERATURE SETTING.
6. PROVIDE A CONCRETE HOUSE KEEPING PAD FOR THE BOILER ADJACENT TO THE EXISTING CHILLER.
7. JOHNSON CONTROLS SHALL PROVIDE THE LOGIC AND CONTROL OF THE TWO OPERATIONAL MODES AND INTERFACE WITH THE MASTER CONTROL SYSTEM.
8. THE HHW SYSTEM SHALL HAVE A SEPARATE EXPANSION TANK, AND WILL NOT UTILIZE THE CHILLED WATER EXPANSION TANK.
9. PIPE INSULATION IS NOT INCLUDED, BUT WILL BE PERFORMED BY A SEPARATE CONTRACTOR.
10. DECOMMISSION DOMESTIC HOT WATER HEATER EXCHANGER.
11. INSTALL ELECTRIC DOMESTIC HOT WATER HEATER AND EXPANSION TANK, AND CONNECT TO EXISTING DOMESTIC HOT WATER DISTRIBUTION SYSTEM.

RFI-4 REQUESTED BY MR. JAY BERGER
FACILITY MANAGER
VA SEPULVEDA AMBULATORY CARE CENTER

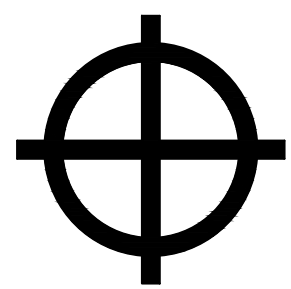

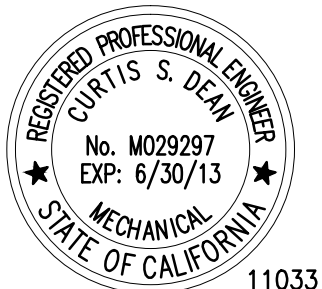
GENERAL NOTES

1. COORDINATE WITH OWNER FOR EQUIPMENT/SYSTEM SHUT DOWN TIMES.
2. VERIFY HORSEPOWER, VOLTAGE, AND PHASE PRIOR TO ORDERING PUMP 63-P-3.
3. VERIFY VOLTAGE, AND PHASE PRIOR TO ORDERING BOILER 63-B-1.
4. FOR ALL NEW PIPING THAT REQUIRES ROUTING ON THE FLOOR OR CONCRETE SLAB IN THE WALKING PATH, INSTALL A METAL PROTECTIVE COVER FOR THE PIPING. SEE PIPE SUPPORT/COVER DETAIL 9-M-2.2.
5. THERE IS AN EXISTING UNDERGROUND STREET LIGHTING CIRCUIT THAT IS IN THE VICINITY OF THE NEW 1" MFG LINE.
6. VERIFY LOCATION OF UNDERGROUND UTILITIES PRIOR TO TRENCHING.

KEY NOTES

1. FOR EXTEND OF PIPING DEMOLITION, SEE CHILLED WATER PIPING DIAGRAM - DEMOLITION 63-M-2.1.
2. FOR CONDENSATE DRY WELL, SEE CONDENSATE DRY WELL DETAIL 4-M-2.2.
3. FOR CONDENSATE DRY WELL, SEE CLOSE COUPLED PUMP MOUNTING DETAIL 6-M-2.2.
4. FOR BOILER MOUNTING, SEE BOILER MOUNTING DETAIL 8-M-2.2.
5. FOR COMPRESSION TANK MOUNTING, SEE COMPRESSION TANK MOUNTING DETAIL 12-M-2.3.
6. FOR NEW CHILLED WATER AND HEATING HOT WATER PIPING DIAGRAM, SEE CHILLED WATER AND HEATING HOT WATER PIPING DIAGRAM DETAIL 2-M-2.2.
7. FOR DOMESTIC WATER HEATER PIPING DIAGRAM, SEE DOMESTIC WATER HEATER DETAIL 4-M-2.2.

FINAL SUBMITTAL - NOT FOR CONSTRUCTION

DESIGN-BUILDER:		ARCHITECT/ENGINEERS:		Drawing Title		Project Title		Project Number		Office of Construction and Facilities Management Department of Veterans Affairs
 ACCURATE ENGINEERING INTEGRATED CONSTRUCTION ADVISORS, INC. GENERAL AND SPECIALTY CONTRACTORS 1704 TRADE STREET SAN DIEGO, CA 92111 PH: (619) 544-1789 FAX: (619) 544-1886 WWW.ACCURATEENGINEERING.COM		 BENDER & DEAN ENGINEERING 438 Camino Del Rio South Suite 217 San Diego, CA 92108-3547 Phone: (619) 704-1900 Fax: (619) 427-1608		BUILDING 63 - MECHANICAL PLANS, SITE MECHANICAL PLANS, AND NOTES		VA HOSPITAL - SEPULVEDA ENERGY EFFICIENCY MEASURES		-		
RFI-4 DECOM. STM WTR HEATER, INSTALL ELEC WATER HEATER Revisions: 04/06/12 Date				Approved Project Director		Location NORTH HILLS, CA		Building Number 63		
						Date APRIL 6, 2012		Drawing Number 63-M-1		