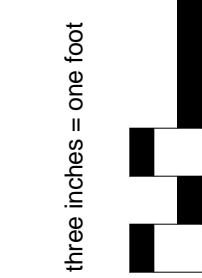
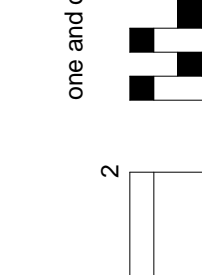


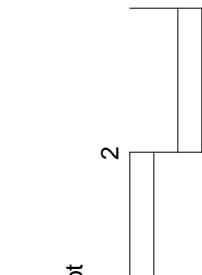
A



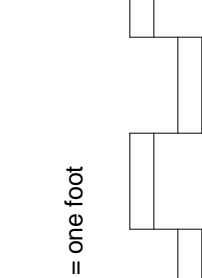
B



C



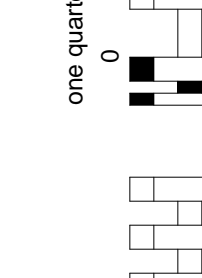
D



E



F



3/10/2018 11:06:18 PM

FINISH LEGEND

MATERIAL CODE	MANUFACTURER	PATTERN/LINE	COLOR	COMMENT
CEILINGS				
AT-01 ACOUSTICAL TILE	SEE SPECIFICATIONS		SEE SPECIFICATIONS	
AT-01 (SP)	SEE SPECIFICATIONS			
GYP BOARD	SEE SPECIFICATIONS		P-06	
LVT - LUXURY VINYL TILE				
LVT-01	CENTIVA WOOD PLANK	VENUE WOODS	EUROPEAN CHERRY	HERRINGBONE PATTERN
LVT-02	CENTIVA WOOD PLANK	VENUE WOODS	EUROPEAN CHERRY	STRAIGHT PLANK
LVT-03	CENTIVA TILE	EVENT STONE		18" x 18" TILE
WELDED SEAM FLOOR				
WSF-01	MANNINGTON	BIOSPEC MD	TOASTED SESAME 15333	
WSF-02	MANNINGTON	BIOSPEC MD	SILVER PINE 15374	
WSF-03	MANNINGTON	BIOSPEC MD	GREY FLANNEL15370	
WR-01	MANNINGTON	BIOSPEC MD WELDING ROD	842434	
P- PAINT				
P-01	SHERWIN WILLIAMS		SW7015. REPOSE GRAY	
P-02	SHERWIN WILLIAMS		SW7016. MINDFUL GRAY	
P-03	SHERWIN WILLIAMS		SW6228. REFUGE	
P-04	SHERWIN WILLIAMS		SW6214 UNDERSEAS	
P-05	SHERWIN WILLIAMS		SW7045 INTELLECTUAL GRAY	
P-06	SHERWIN WILLIAMS		SW7005 PURE WHITE	ALL GYP BD CEILINGS UNLESS INDICATED ON DRAWINGS
PLAM- PLASTIC LAMINATE				
PLAM- 01	WILSONART		4911-38 SOFT GOLD MESH	
PLAM- 02	WILSONART		4912-38 GILDED MESH	
PLAM- 03	WILSONART		4794-60 WINDSWEPT BRONZE	
PLAM- 04	WILSONART		4877-38 GREY MESH	
PT - PORCELAIN TILE				
PT-01 FLOOR	CROSSVILLE	MANOIR	AV255 BELMONT	12" x 12"
PT-02 WALL	CROSSVILLE	MANOIR	AV254 HERMITAGE	6" x 12" BASE
PT-03 BORDER	CROSSVILLE	S009 QUARTZITE MOSAIC	S009	1" x 1" MOSAIC CUT TO BAND WIDTH, CONTINUOUS
PTB - PORCELAIN TILE BASE				
PT-04 BULL NOSE	CROSSVILLE		AV255 BELMONT	
EXPOXY RESINOUS				
RES-01	SIKA	DECO FLAKE	OPAL W SF 510 TOPCOAT	
RB - RESILIENT BASE				
RB-01	JOHNSONITE	TRADITIONAL 4" BASE	TB1 PEPPERCORN	
RB-02	JOHNSONITE	PROFILE BASE	TB1 PEPPERCORN	
SS- SOLID SURFACE				
SS-01	CORIAN	LINEN		
SS-02	CORIAN	CANVAS		
WP- WALLPROTECTION				
WP-01	IN PRO	CORNER GUARD	209 SLATE	SEE SPECIFICATION
WP-02	IN PRO	CRASH RAIL	209 SLATE	SEE SPECIFICATION
WP-03	IN PRO	HANDRAIL	383 VINTAGE WALNUT	SEE SPECIFICATION
CUBICLE CURTAIN				
CC-01	IN-PRO	BREEZE (DISPOSABLE)	TAUPE (DISPOSABLE)	CLICKEZE PRIVACY SYSTEMS
STONE VENEER				
STN-01	STONE VENEER	MATCH EXISTING ON SITE	3" STONE STACKED	SEE SPECIFICATION
STAINLESS STEEL				
STNLS	SEE SPECIFICATIONS			STAINLESS STL WORKSURFACE
CASEWORK CABINETS				
CAB-01	MIDMARK		801 TIMBER	CASEWORK
WALK OFF MAT				
WMT-01	PEDIMAT 7/16"			

GENERAL NOTES

- A ALL FINISH PRODUCTS ARE INTENDED AS A BASIS OF DESIGN BUT IS NOT INTENDED TO LIMIT SELECTION. PROVIDE INDICATED EQUIPMENT OR EQUIPMENT OF EQAUL CAPACITY, QUALITY, AND PERFORMANCE.
- B SEE SHEET IN101 FOR FLOOR PATTERN LAYOUT
- C ALL WELDED SHEET VINYL WELD RODS TO COORDINATE WITH THE DARKER WSF AT SEAM AND DARK SOLID AROUND LEAVES WHERE NOTED
- D WHERE WSF TURNS UP AS BASE - USE THE SAME COLOR CONTINUOUSLY TO EXTEND FLOOR PATTERN AND TOP CAP TO ME MANNINGTON COLOR 918 FLAX
- E PT-01 TO BE FULL HEIGHT ON WALL BEHIND WATERCOOLERS IN WAITING AREA 3
- F STANDARD CASEWORK: TO SHOW PLAM-01 ON THE UPPER AND PLAM-02 ON THE LOWER ON DESKS
- G WALL PROTECTION BASIS OF DESIGN IS INPRO, COLORS VINTAGE WALNUT FOR HANDRAIL AND SLATE CRASH RAIL AND BUMPER GUARDS
- H MANUFACTURED METAL CASEWORK TO BE MIDMARK SERIES "SYNTHESIS" AS A BASIS OF DESIGN-
http://www.midmark.com/docs/default-source/marketing-collateral/007-0877-00-synthesis.pdf?sfvrsn=10

FINISH SCHEDULE

ROOM NO.	ROOM NAME	BASE	FLOOR	WALLS	ACCENT WALL	CEILING	COUNTER TOPS	VERTICAL MILLWORK	WALL PROTECTION	CODED NOTES
B40	VESTIBULE	RB-02	LVT-01	P-05	-----	AT-01	-----		-----	
B41	RECEPTION	RB-02	LVT-02	P-02	P-03	GB/ AT-01	SS-01	PLAM- 01 UPPER PLAM-02 LOWER	WP-01,WP-02,WP-03	10
B42	WAITING AREA	RB-02	LVT-01	P-02	P-03	AT-01	-----		WP-01,WP-02,WP-03	5
B43	PHYSICIAN/PA/ RES/INTERN	RB-01	LVT-02	P-02	P-04	AT-01	-----	CAB-01	WP-01	5
B44	TELECOM	-----	CONC.	-----	-----	-----	-----		-----	5
B45	TELE DATA	-----	CONC.	-----	-----	-----	-----		-----	
B46	ELEC	RB-01	CONC.	P-01	-----	-----	-----		-----	5
B47	STAFF LOCKERS	RB-01	LVT-03	P-01	-----	AT-01	-----			
B48	STAFF LOUNGE	RB-01	LVT-03	P-05	P-03	AT-01	SS-01		WP-01	5,10
B49	STAFF UNISEX	PTB-01	PT-01	PT-02 / P-02 / PT-03	-----	GYP BD	-----		-----	1,2
B50	PATIENT UNISEX	PTB-01	PT-01	PT-02 / P-02 / PT-03	-----	GYP BD	-----		-----	1,2
B51	ED COORD & DIETITIAN	RB-01	LVT-02	P-02	P-04	AT-01	-----		-----	
B52	CHIEF NURSE	RB-01	LVT-02	P-02	P-04	AT-01	-----		-----	
B53	CHIEF OFFICE	RB-01	LVT-02	P-02	P-04	AT-01	-----	CAB-01	-----	
B54	TRAIN/ PROG RM	WSF-03	WSF-03	P-02	P-04	AT-01	SS-01	PLAM- 01 UPPER PLAM-02 LOWER STNLS	-----	4,6
B55	CLEAN LINEN	WSF-03	WSF-03	P-02	-----	AT-01 (SP)	-----		-----	4,6
B56	DIALYSIS	WSF-01/WSF-02/ WSF-03	WSF-01/WSF-02/WSF-03	P-02	P-03/ P-04	GYP BD	SS-01	PLAM- 01, 02, 03	WP-01,WP-02,WP-03	4,6
B56.1	DIALYSIS CIRCULATION	WSF-02/ WSF-03	WSF-01	P-02	-----	AT-01	-----		WP-01	4,6,12
B56.2	NURSE STATION	WSF-02	WSF-02	P-02	P-05	GB/AT-01	SS-01 / SS-02	PLAM- 01, 02, 03	WP-01	4,6,10
B57	NOURISH	WSF-02	WSF-02	P-01	P-04	AT-01	SS-01	PLAM- 01, 02, 03	WP-01	4,6,10
B58	TLT	PTB-01	PT-01	PT-02 / P-02 / PT-03	-----	GYP BD	-----		-----	1,2
B59	EXAM/ TREAT	WSF-03	WSF-03	P-01	P-03	AT-01	SS-01	PLAM- 01 UPPER PLAM-02 LOWER	-----	4,6
B60	MED PREP	WSF-02	WSF-02	P-02	P-04	AT-01	SS-01	PLAM- 01 UPPER PLAM-02 LOWER	-----	4,6
B61	ISOLATION ROOM	WSF-02	WSF-02	P-02	P-04	GYP BD	----		WP-01	4,6
B62	ISOLATION TLT	WSF-02	WSF-02	P-02	-----	GYP BD	-----		-----	4,6
B63	PRIVATE ROOM	WSF-03	WSF-03	P-02	P-04	AT-01	-----		WP-01	4,6
B64	PRIVATE TLT	WSF-03	WSF-03	P-02	-----	GYP BD	-----		-----	4,6,11
B65	EQUIP STOR	RES-01	RES-01	P-02	-----	AT-01 (SP)	-----	STNLS	WP-01	7
B66	WATER TREATMENT	RES-01	RES-01	P-02	-----	AT-01 (SP)	SS-01	STNLS	WP-01	7
B67	DIALYSATE PREP	RES-01	RES-01	P-02	-----	AT-01 (SP)	-----	PLAM- 01 UPPER PLAM-02 LOWER	WP-01	7
B68	BIO-MED REPAIR	RES-01	RES-01	P-01	-----	AT-01 (SP)	SS-01	PLAM- 01 UPPER PLAM-02 LOWER	WP-01	7
B69	UTIL, STERILE, CLEAN	WSF-01	WSF-01	P-02	-----	AT-01 (SP)	SS-01	STNLS	WP-01	4,6
B70	UTIL SOILED	WSF-03	WSF-03	P-02	-----	AT-01 (SP)	SS-01	STNLS	WP-01	4,6
B71	SOILED REC	WSF-03	WSF-03	P-02	-----	AT-01 (SP)	SS-01		WP-01	4,6
B72	CLEAN PREP	WSF-03	WSF-03	P-02	-----	AT-01 (SP)	SS-01		-----	4,6
B73	CLEAN STORAGE	WSF-03	WSF-03	P-02	-----	AT-01 (SP)	SS-01		WP-01	4,6
B74	ELEC.	RB-01	CONC.	P-02	-----	-----	-----		-----	
B75	ELEC.	RB-01	CONC.	P-02	-----	-----	-----		-----	
B76	HVAC	-----	CONC.	P-01	-----	-----	-----		-----	
CB-2A	CORRIDOR	RB-01	LVT-02	P-01		AT-01				
CB-2B	CORRIDOR	RB-01	LVT-02	P-02		AT-01				
CB-2C	CORRIDOR	RB-01	LVT-02	P-01	-----	AT-01	-----		WP-01,WP-02,WP-03	
CB-9	CORRIDOR	RB-01	LVT-02	P-01	-----	AT-01	-----		WP-02, WP-03	
CB-10	CORRIDOR	RB-01	LVT-02	P-01	-----	AT-01	-----		WP-01,WP-02,WP-03	
CB-11	CORRIDOR	RB-01	LVT-02	P-01		AT-01				
CB-12	CORRIDOR	RB-01	LVT-02	P-01	-----	AT-01	-----		WP-01,WP-02,WP-03	

CODED NOTES

- 1 - GYP BOARD CEILINGS TO BE PAINTED P-06
- 2 - ROOMS WITH PT WAINSCOT TO HAVE FULL HEIGHT TILE ON WET WALL
- 3 - SEE SHEET IN101 FOR WELDED SHEET FLOORING PATTERN
- 4 - WELDED SHEET FLOORING WELD ROD TO BE CAMOFLAUGE EXCEPT WHERE NOTED FOR LEAF PATTERN ON SHEET IN101
- 5 - SEE SHEET GI001 AND FINISH SCHEDULE MISC COLUMN FOR ALL DEDUCTIVE ALTERNATES
- 6 - WELDED SHEET FLOORING TO HAVE INTEGRAL BASE WITH TOP CAP OF MANNINGTON COLOR 918 FLAX - FLOOR PATTERN TO CONTINUE THROUGH INTEGRAL BASE.
- 7 - ALL RESINOUS FLOORING TO HAVE 4" INTEGRAL BASE
- 8 - PORCELAIN TILE BEHIND WATER COOLERS IS TO BE FULL HEIGHT - SEE PLAN FOR SIDE WALL LIMITS
- 9 - SEE REFLECTED CEILING PLAN FOR GYP BOARD SOFFIT SIZE AND LOCATION
- 10 - SEE SHEET AE401 FOR CASEWORK FINISHES
- 11- SEE SHEET AE401 FOR CONTINUOUS TILE MOSAIC BORDER
- 12 - GYP BOARD SOFFITS ABOVE NURSES STATION TO BE P-05

CONSTRUCTION DOCUMENTS
FULLY SPRINKLERED

Revisions:

Date

Approved: Patient Safety Nurse

Approved: Energy Engineer

Approved: Chief of Police

Approved: Chief of Mental Health Service

Approved: Safety Manager

Approved: Infection Control Officer

Approved: GEMS Coordinator

Approved: Service Chief

Approved: Chief of Staff

Approved: Associate Director

Drawing Title
FINISH SCHEDULE

Approved: Chief of Facility Management Svc.

Approved: Medical Center Director

Project Title
RELOCATE AND EXPAND RENAL
DIALYSIS

Building Number
2

Location
SALEM VA MEDICAL CENTER

Date
2018.02.16

Project No.
658-315

Drawing No.
IN102

Sheet 64 of 120

Veterans
Affairs

Corporate Office:
766 Middle St,
Fairhope, AL 36532
Phone: 251.990.5778
Fax: 251.990.3716

BES
DESIGN/BUILD

VA FORM 08-6231, OCT 1978

9

8

7

6

5

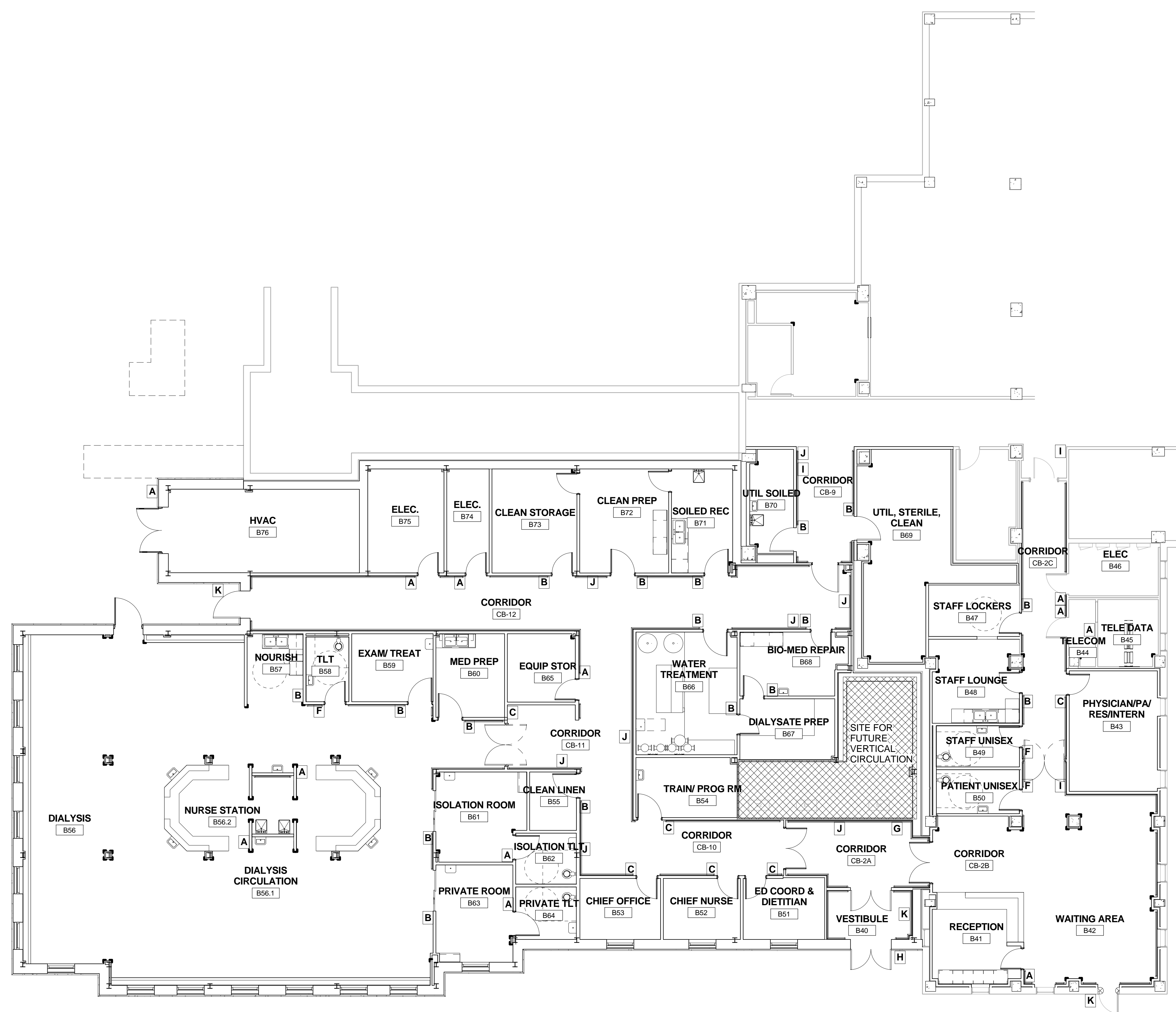
4

3

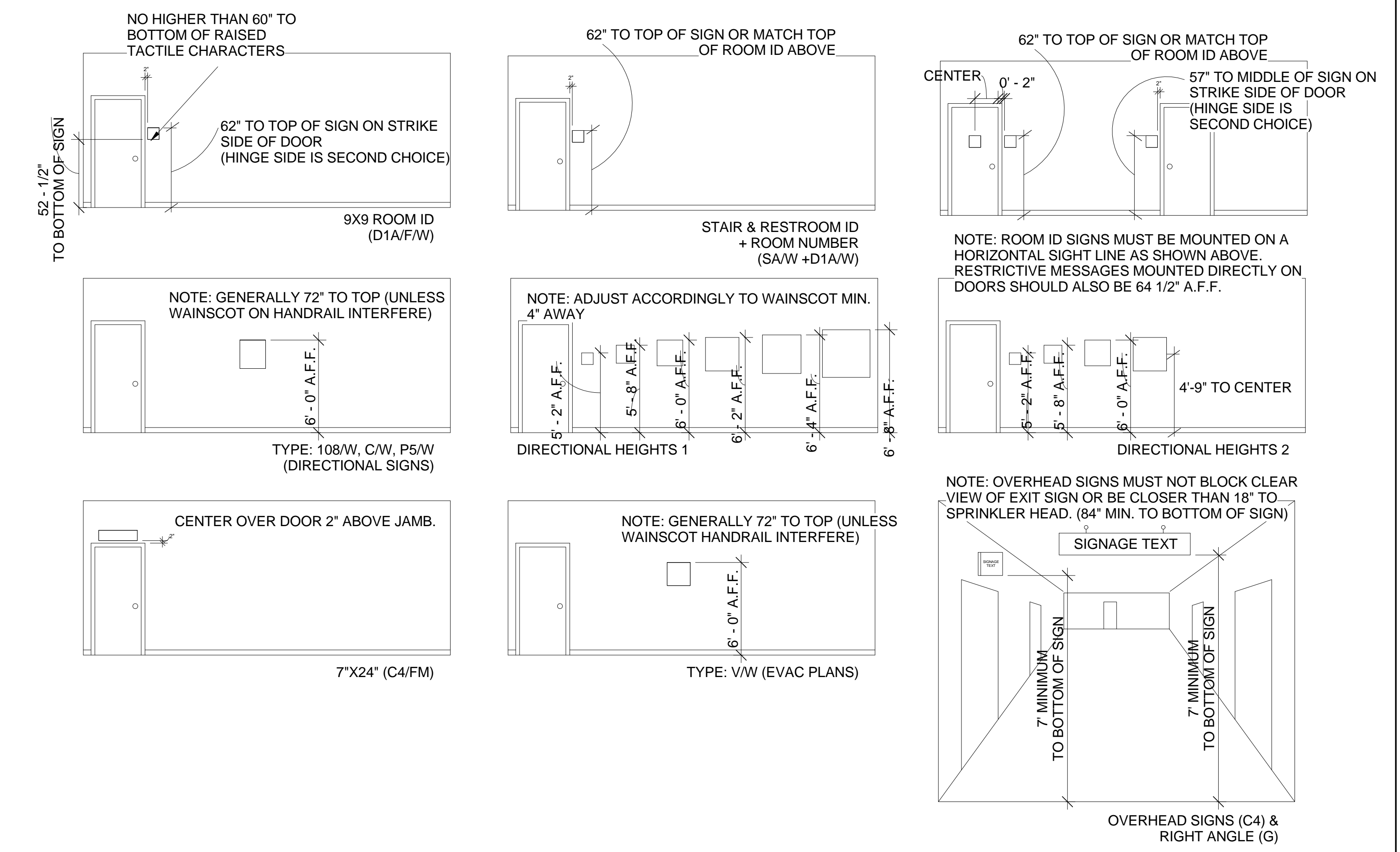
2

1

A
three inches = one foot
B
one and one half inches = one foot
C
one inch = one foot
D
three quarters inch = one foot
E
one half inch = one foot
F
three eighths inch = one foot
G
one quarter inch = one foot
H
one eighth inch = one foot
I
one sixteenth inch = one foot
J
one thirty second inch = one foot
K
one sixty fourth inch = one foot



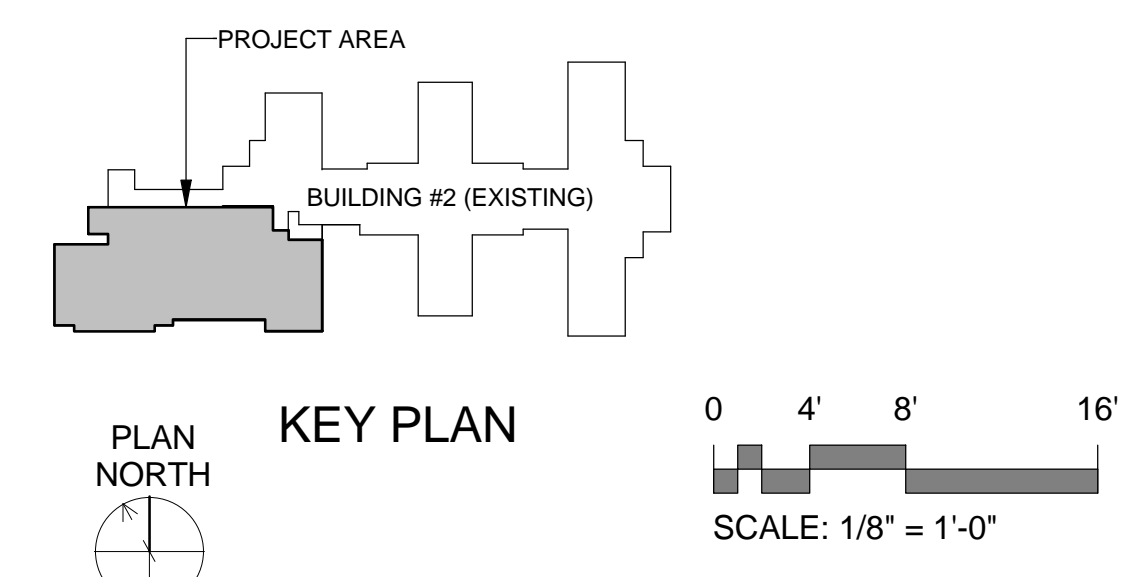
SIGNAGE INSTALLATION STANDARDS



GRAPHIC LEGEND

- A INDICATES LOCATION AND TYPE OF SIGNAGE. SEE SIGNAGE DETAILS & SCHEDULE ON IS102
- INDICATES PARTITION
- INDICATES LOCATION OF CRASH RAIL. SEE DETAIL 9B/AE502
- INDICATES LOCATION OF HANDRAIL. SEE DETAIL 9D/AE502

9F SIGNAGE FLOOR PLAN - BASEMENT
1/8" = 1'-0"



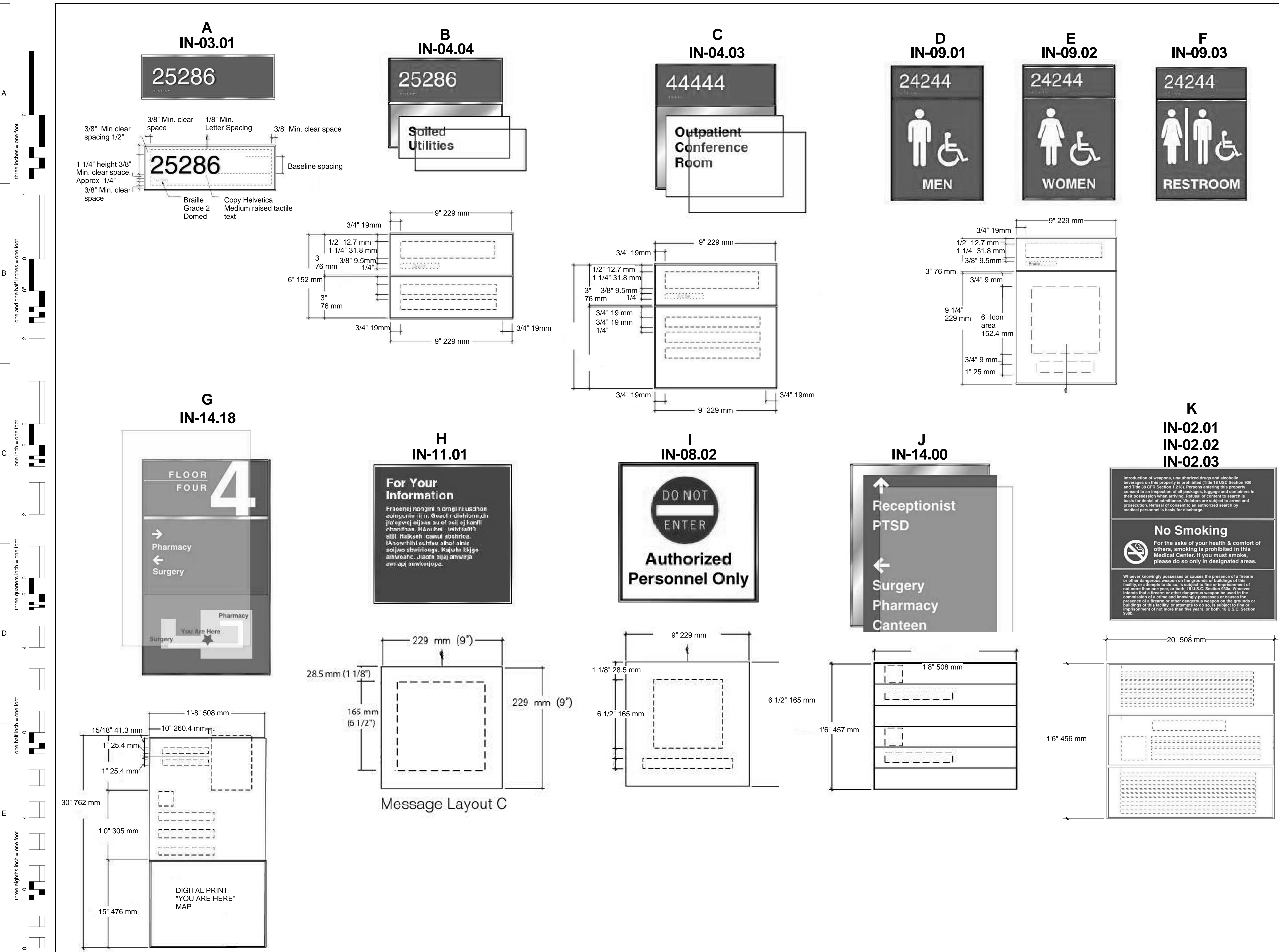
CONSTRUCTION DOCUMENTS
FULLY SPRINKLERED

Revisions:	Date	<div><div><div>BES</div><div>DESIGN/BUILD</div></div><div>Corporate Office: 766 Middle St. Fairhope, AL 36532 Phone: 251.990.5778 Fax: 251.990.3716</div></div>	Approved: Patient Safety Nurse		Approved: Energy Engineer		Approved: Safety Manager		Approved: Service Chief		Drawing Title SIGNAGE PLAN			Project Title RELOCATE AND EXPAND RENAL DIALYSIS			Date 2018.02.16		Veterans Affairs	
					Approved: Chief of Police		Approved: Infection Control Officer		Approved: Chief of Staff					Project No. 658-315						
					Approved: Chief of Mental Health Service		Approved: GEMS Coordinator		Approved: Associate Director		Approved: Chief of Facility Management Svc.			Building Number 2		Checked ALB		Drawn AEJ		
											Approved: Medical Center Director			Location SALEM VA MEDICAL CENTER			Drawing No. IS101			
															Sheet 65 of 120					

Veterans Affairs

A
three inches = one foot
1
one and one half inches = one foot
B
6
2
three quarters inch = one foot
C
6
4
one half inch = one foot
D
0
E
three eighths inch = one foot
F
0
one quarter inch = one foot
3/10/2018 11:06:42 PM

A
B
C
D
E
F



SIGNAGE SCHEDULE

SIGNAGE	ROOM NAME	Room Number Code	SIGNAGE	
			TYPE	TEXT
B40	VESTIBULE	1	K,J,G	SEE LEGEND
B41	RECEPTION	2	A	ROOM NUMBER
B42	WAITING AREA	3	J,K	DIRECTIONAL
B43	PHYSICIAN/PA/ RES/INTERN	4	C	MEDICAL OFFICES
B44	TELECOM	5	A	ROOM NUMBER
B45	TELE DATA	5-A	A	ROOM NUMBER
B46	ELEC	6	A	ROOM NUMBER
B47	STAFF LOCKERS	8	B	STAFF LOCKERS
B48	STAFF LOUNGE	9	B	STAFF LOUNGE
B49	STAFF UNISEX	10	F	GRAPHIC - RESTROOM
B50	PATIENT UNISEX	11	F	GRAPHIC - RESTROOM
B51	ED COORD & DIETITIAN	13	C	EDUCATION COORDINATOR DIETITIAN
B52	CHIEF NURSE	14	C	CHIEF NURSE
B53	CHIEF OFFICE	15	C	CHIEF OFFICE
B54	TRAIN/ PROG RM	16	C	TRAINING
B55	CLEAN LINEN	17	B	CLEAN LINEN
B56	DIALYSIS	18	C	DIALYSIS
B56.1	DIALYSIS CIRCULATION	---	---	
B56.2	NURSE STATION	18-A	A,A	ROOM NUMBER
B57	NOURISH	19	B	NOURISHMENT
B58	TLT	20	F	GRAPHIC - RESTROOM
B59	EXAM/ TREAT	21	B	EXAM ROOM
B60	MED PREP	22	B	MED PREP
B61	ISOLATION ROOM	23	B	ISOLATION ROOM
B62	ISOLATION TLT	23-A	A	ROOM NUMBER
B63	PRIVATE ROOM	24	B	PRIVATE ROOM
B64	PRIVATE TLT	24-A	A	ROOM NUMBER
B65	EQUIP STOR	25	B	EQUIPMENT STORAGE
B66	WATER TREATMENT	26	B	WATER TREATMENT
B67	DIALYSATE PREP	27-A	B	DIALYSATE PREP
B68	BIO-MED REPAIR	27	B	BIOMED REPAIR
B69	UTIL, STERILE, CLEAN	28	B	UTILITY CLEAN STORAGE
B70	UTIL, SOILED	30	B	UTILITY SOILED
B71	SOILED REC	31	B	EQUIPMENT SOILED RECEIVING
B72	CLEAN PREP	32	B	EQUIPMENT CLEAN PREP
B73	CLEAN STORAGE	33	B	EQUIPMENT CLEAN STORAGE
B74	ELEC.	34	A	ROOM NUMBER
B75	ELEC.	35	A	ROOM NUMBER
B76	HVAC	36	A,K	ROOM NUMBER, PRINTED NOTICE
CB-2A	CORRIDOR	CB-2A	J, G	
CB-2B	CORRIDOR	CB-2B	---	
CB-2C	CORRIDOR	CB-2C	I	PRINTED NOTICE
CB-9	CORRIDOR	CB-9	J,I	CORRIDOR NUMBER, PRINTED NOTICE
CB-10	CORRIDOR	CB-3	J,J	CORRIDOR NUMBER
CB-11	CORRIDOR	CB-11	J	CORRIDOR NUMBER
CB-12	CORRIDOR	CB-4	J,J,K	CORRIDOR NUMBER, PRINTED NOTICE