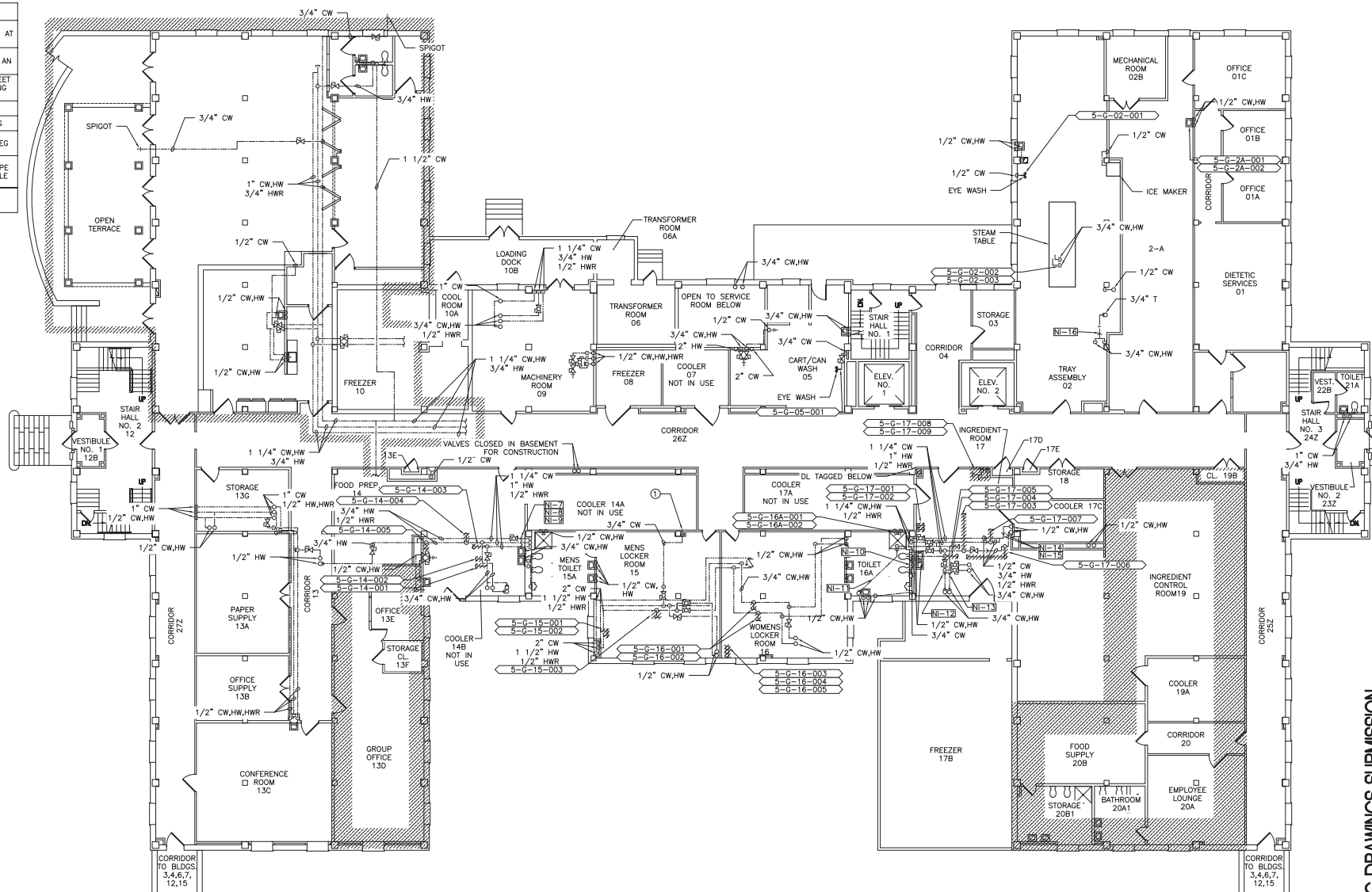


PLUMBING FIELD STUDY KEY SYMBOLS	
TYPE A - PIPE LENGTH GREATER THAN TWICE THE DIAMETER OF THE PIPE SIZE TERMINATING AT CAP, VALVE, OR FITTING.	
TYPE B - PIPE LENGTH GREATER THAN TWICE THE DIAMETER OF THE PIPES TERMINATING AT AN INFREQUENTLY USED PLUMBING FIXTURE.	
TYPE C - PIPE LENGTH GREATER THAN 25 FEET TERMINATING AT A FREQUENTLY USED PLUMBING FIXTURE.	
XXX-XX-XXX-XXX	DEAD LEG TAG
XXX-XX-XXX-XXX	MIXING VALVE TAG
XXXX-XXXX-XXXX	REMEDiate DEAD LEG
NI-0	NON-INSULATED PIPE REFER TO SCHEDULE
XXXX-XXXX-XXXX	AREA UNDER CONSTRUCTION

PLUMBING KEYED NOTES

- ① UNABLE TO VERIFY CONNECTION



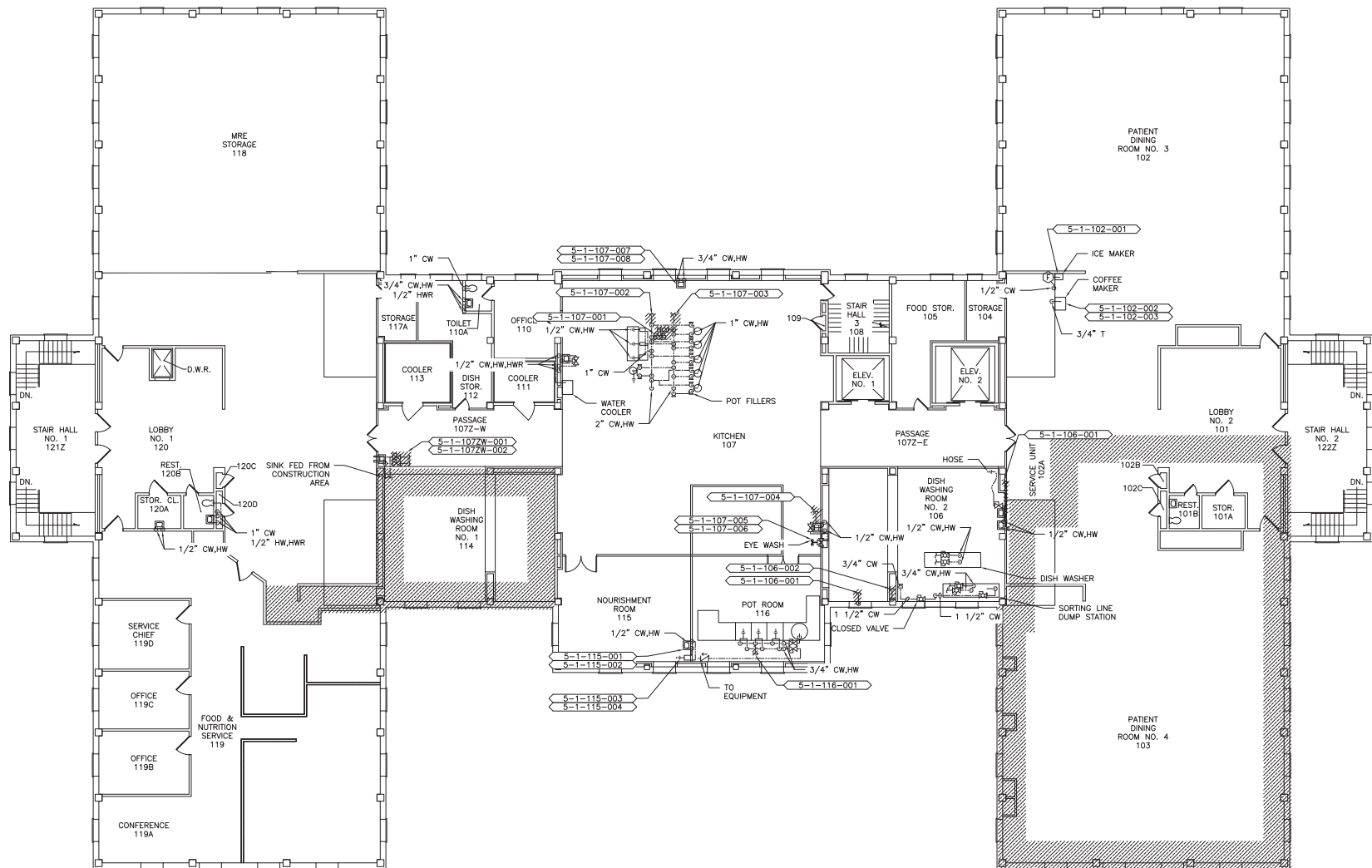
1
PL-109

BUILDING 5 GROUND FLOOR PLUMBING AS BUILT/DEAD LEG PLAN SCALE: 1/8"=1'-0"

100% WORKING DRAWINGS SUBMISSION

		CONSULTANTS:	ARCHITECT/ENGINEERS:	NORTH:			Drawing Title	Project Title	Project Number	Engineering Service
						Building 5 Ground Floor Plumbing As-Built / Dead-Leg Plan	Remove Domestic Dead-Legs at the Montrose Campus	620-18-119		
								Building(s) Number		
								05		
								Drawing Number		
						Approved: Facility Director - VAH/HCSC	Location			
							Montrose, New York			
						Approved: John Cliffe, Facility Chief of Engineering	Date	Checked	Drawn	
							03-08-2018	MR	MF	
100% Working Drawings Submission	03-09-2018									
Revised	Date:									

PLUMBING FIELD STUDY KEY SYMBOLS	
TYPE A - PIPE LENGTH GREATER THAN TWICE THE DIAMETER OF THE PIPE SIZE TERMINATING AT CAP, VALVE, OR FITTING.	
TYPE B - PIPE LENGTH GREATER THAN TWICE THE DIAMETER OF THE PIPES TERMINATING AT AN INFREQUENTLY USED PLUMBING FIXTURE.	
TYPE C - PIPE LENGTH GREATER THAN 25 FEET TERMINATING AT A FREQUENTLY USED PLUMBING FIXTURE	
XXX-XX-XXX-XXX	DEAD LEG TAG
XXX-XX-XXX-XXX	MIXING VALVE TAG
	REMEDiate DEAD LEG
NI-0	NON-INSULATED PIPE REFER TO SCHEDULE
	AREA UNDER CONSTRUCTION



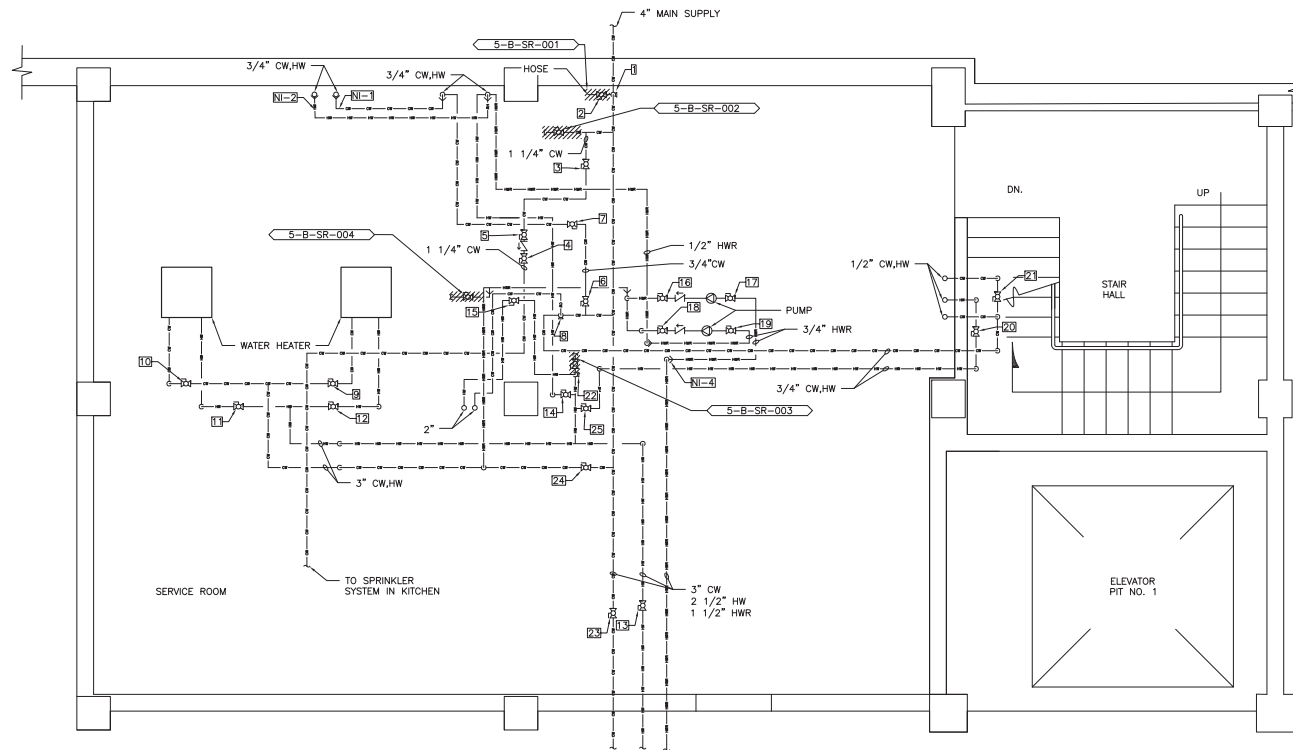
1
PL-110

BUILDING 5 FIRST FLOOR
PLUMBING AS BUILT/DEAD LEG PLAN
SCALE: 1/8"=1'-0"

100% WORKING DRAWINGS SUBMISSION

		CONSULTANTS:	ARCHITECT/ENGINEERS:	NORTH:			Drawing Title		Project Title		Project Number		Engineering Service
					Building 5 First Floor Plumbing As-Built / Dead-Legs Plan	Remove Domestic Dead-Legs at the Montrose Campus	620-18-119						
							Building(s) Number						
							05						
							Drawing Number						
							Montrose, New York						
					Approved: Facility Director, VAHVCS		Location						
					Approved: John Cliffe, Facility Chief of Engineering		Date		Checked	Drawn			
					03-08-2018	MR	MF	PL 110		Sheet 32 of 77			
100% Working Drawings Submission	03-09-2018												
Revisions:	Date:												

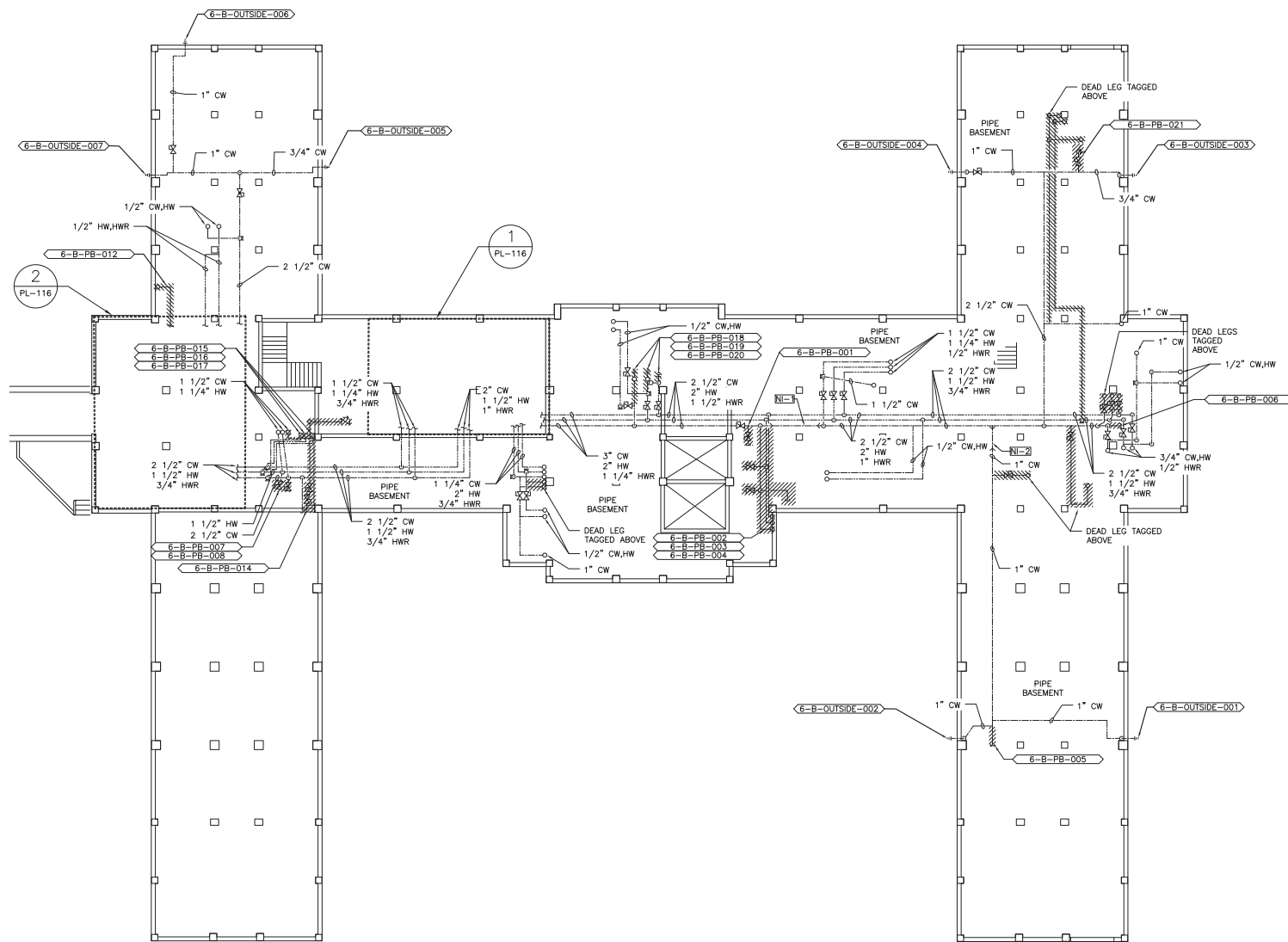
PLUMBING FIELD STUDY KEY SYMBOLS	
TYPE A - PIPE LENGTH GREATER THAN TWICE THE DIAMETER OF THE PIPE SIZE TERMINATING AT CAP, VALVE, OR FITTING.	
TYPE B - PIPE LENGTH GREATER THAN TWICE THE DIAMETER OF THE PIPES TERMINATING AT AN INFREQUENTLY USED PLUMBING FIXTURE.	
TYPE C - PIPE LENGTH GREATER THAN 25 FEET TERMINATING AT A FREQUENTLY USED PLUMBING FIXTURE	
XXX-XX-XXX-XXX	DEAD LEG TAG
XXX-XX-XXX-XXX	MIXING VALVE TAG
////	REMEDiate DEAD LEG
NI-0	NON-INSULATED PIPE REFER TO SCHEDULE



1
PL-111

BUILDING 5
SERVICE ROOM ENLARGED PLAN
SCALE: 1/2"=1'-0"

		CONSULTANTS:	ARCHITECT/ENGINEERS:	NORTH:			Drawing Title		Project Title		Project Number		Engineering Service
					Building 5 Enlarged Plan	Remove Domestic Dead-Legs at the Montrose Campus	620-18-119						
							Building ID Number 05						
							Drawing Number						
					Approved: Facility Director, VAH/HCS		Location		Montrose, New York				
		Approved: John Cliffe, Facility Chief of Engineering		Date		Checked	Drawn	PL 111					
				03-08-2018	MR	MF	Sheet 33 of 77						
100% Working Drawings Submission	03-09-2018												
Revisions:	Date:												



SCALE: 1/8"=1'-0"

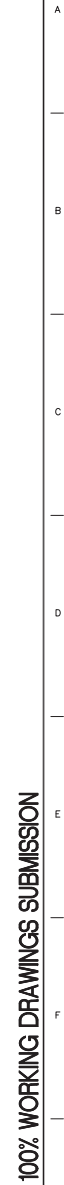
100% WORKING DRAWINGS SUBMISSION



1
PL-113

BUILDING 6 GROUND FLOOR
PLUMBING AS BUILT/DEAD LEG PLAN
SCALE: 1/8"=1'-0"

VA FORM 08-6231, OCT 1978

[illegible]

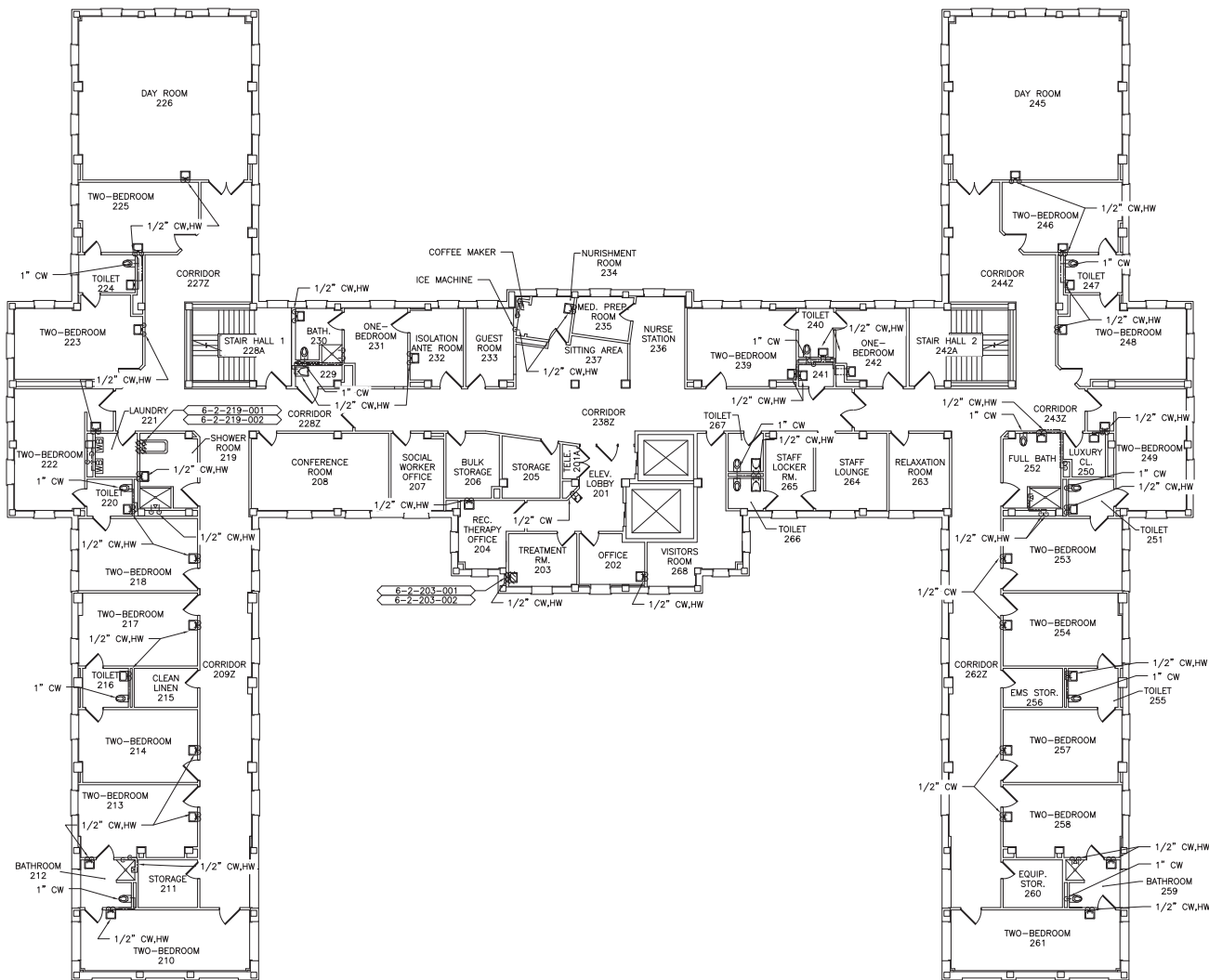
G



5
PL-116

**Engineering
Service**

PLUMBING FIELD STUDY KEY SYMBOLS	
TYPE A - PIPE LENGTH GREATER THAN TWICE THE DIAMETER OF THE PIPE SIZE TERMINATING AT CAP, VALVE, OR FITTING.	
TYPE B - PIPE LENGTH GREATER THAN TWICE THE DIAMETER OF THE PIPES TERMINATING AT AN INFREQUENTLY USED PLUMBING FIXTURE.	
TYPE C - PIPE LENGTH GREATER THAN 25 FEET TERMINATING AT A FREQUENTLY USED PLUMBING FIXTURE.	
XXX-XX-XXX-XXX	DEAD LEG TAG
XXX-XX-XXX-XXX	MIXING VALVE TAG
REMEDIAL DEAD LEG	
NI-0	NON-INSULATED PIPE REFER TO SCHEDULE



1
PL-115

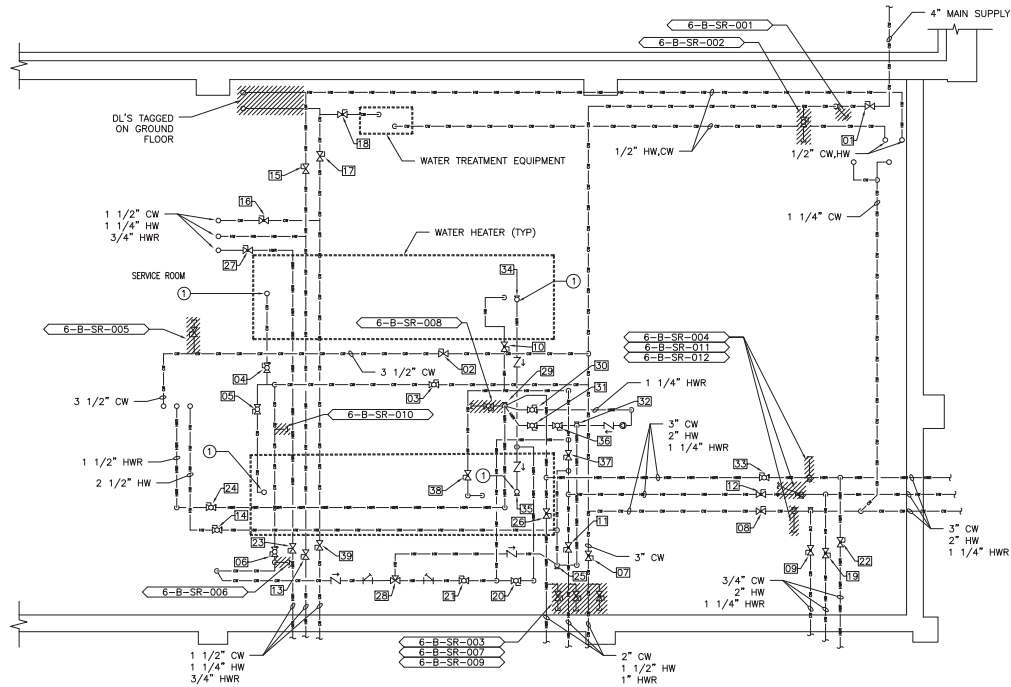
BUILDING 6 SECOND FLOOR
PLUMBING AS BUILT/DEAD LEG PLAN
SCALE: 1/8"=1'-0"

		CONSULTANTS:	ARCHITECT/ENGINEERS:	NORTH:			Drawing Title	Project Title	Project Number	<div>Engineering Service</div>	
							Building 6 Second Floor Plumbing As-Built / Dead-Leg Plan	Remove Domestic Dead-Legs at the Montrose Campus	620-18-119		
									Building(s) Number		
							Approved: Facility Director, VAHVHCS:	Location	05		
								Montrose, New York	Drawing Number		
100% Working Drawings Submission	03-09-2018						Approved: John Cliffe, Facility Chief of Engineering	Date	Checked	Drawn	PL 115
Revisions:	Date:							03-08-2018	MR	MF	

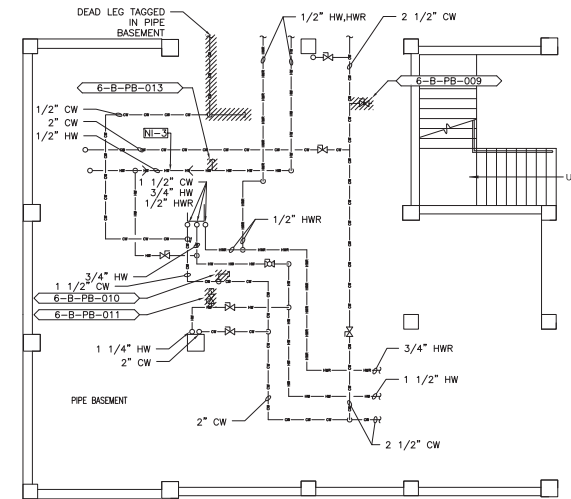
PLUMBING FIELD STUDY KEY SYMBOLS	
TYPE A - PIPE LENGTH GREATER THAN TWICE THE DIAMETER OF THE PIPE SIZE TERMINATING AT CAP, VALVE, OR FITTING.	
TYPE B - PIPE LENGTH GREATER THAN TWICE THE DIAMETER OF THE PIPES TERMINATING AT AN INFREQUENTLY USED PLUMBING FIXTURE.	
TYPE C - PIPE LENGTH GREATER THAN 25 FEET TERMINATING AT A FREQUENTLY USED PLUMBING FIXTURE	
XXX-XX-XXX-XXX	DEAD LEG TAG
XXX-XX-XXX-XXX	MIXING VALVE TAG
REMEDIAL DEAD LEG	
NI-0	NON-INSULATED PIPE REFER TO SCHEDULE

PLUMBING KEYED NOTES

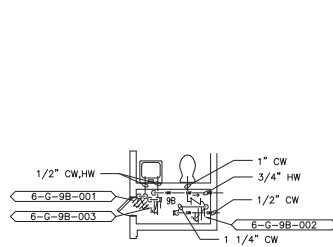
- ① RISE UP INTO BOTTOM OF TANK.



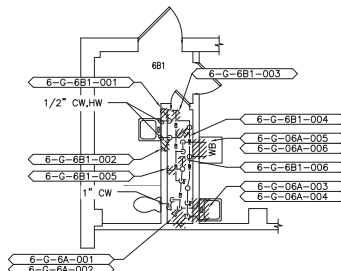
PROJECT NORTH
1
PL-116
BUILDING 6 BASEMENT
SERVICE ROOM ENLARGED PLAN
SCALE: 1/2"=1'-0"



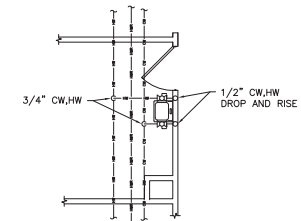
PROJECT NORTH
2
PL-116
BUILDING 6 PIPE BASEMENT
ENLARGED PLAN
SCALE: 1/4"=1'-0"



PROJECT NORTH
3
PL-116
BUILDING 6 GROUND FLOOR
ROOM 9B ENLARGED PLAN
SCALE: 1/4"=1'-0"



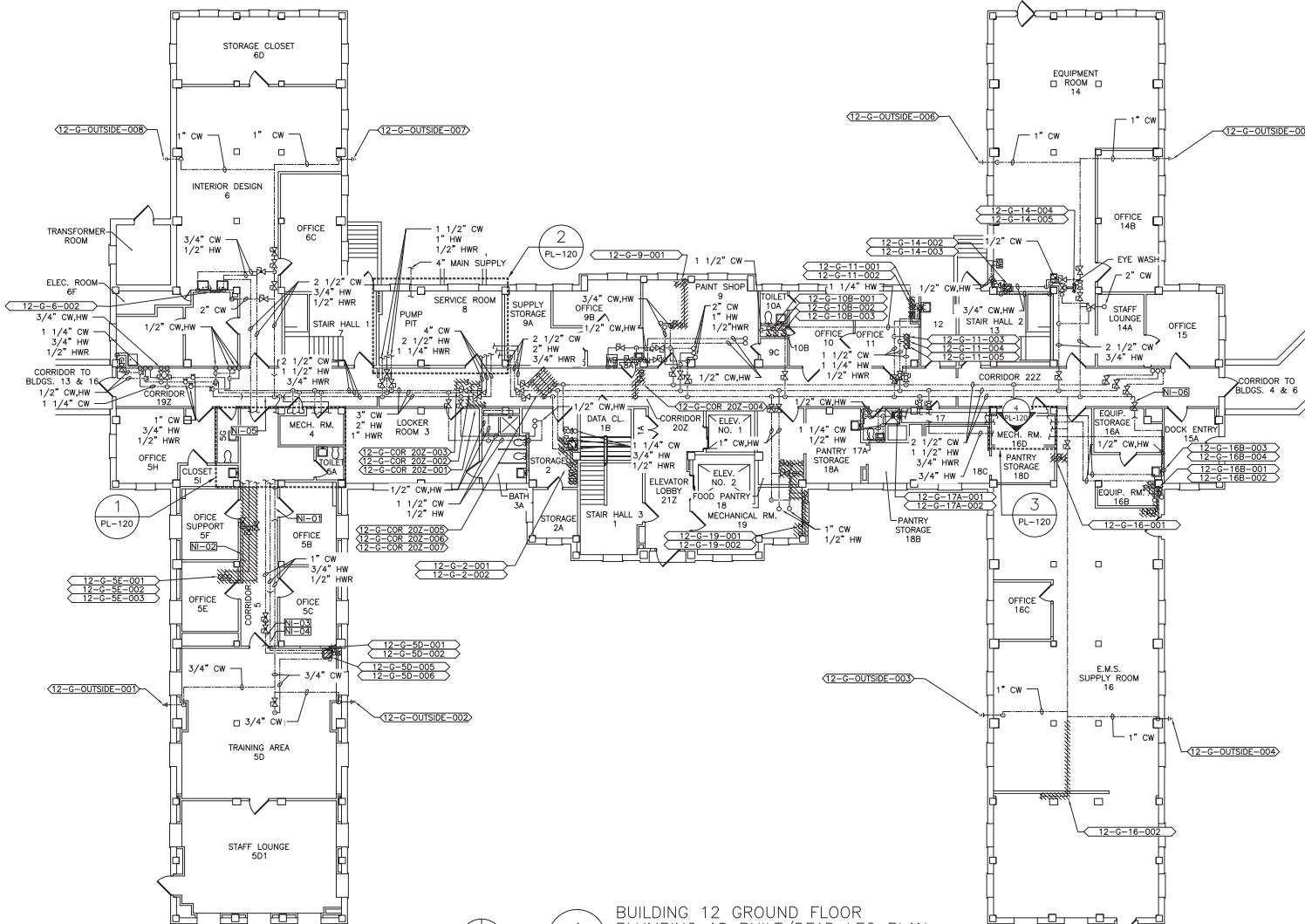
PROJECT NORTH
4
PL-116
BUILDING 6 GROUND FLOOR
ROOM 6B1 ENLARGED PLAN
SCALE: 1/4"=1'-0"



PROJECT NORTH
5
PL-116
BUILDING 6 FIRST FLOOR
TYPICAL SINK DETAIL
SCALE: 1/4"=1'-0"

		CONSULTANTS:	ARCHITECT/ENGINEERS:	NORTH:			Drawing Title	Project Title	Project Number	Engineering Service
						Building 6 Elevation & Enlarged Plans	Remove Domestic Dead-Legs at the Montrose Campus	620-18-119		
								Building(s) Number		
								06		
						Approved: Facility Director, VAH/HCS:	Location	Drawing Number		
							Montrose, New York	PL 116		
						Approved: John Cliffe, Facility Chief of Engineering	Date	Checked	Drawn	
							03-08-2018	MR	MF	
100% Working Drawings Submission	03-09-2018								Sheet 38 of 77	
Revisions:	Date:									

PLUMBING FIELD STUDY KEY SYMBOLS	
TYPE A - PIPE LENGTH GREATER THAN TWICE THE DIAMETER OF THE PIPE SIZE TERMINATING AT CAP, VALVE, OR FITTING.	
TYPE B - PIPE LENGTH GREATER THAN TWICE THE DIAMETER OF THE PIPES TERMINATING AT AN INFREQUENTLY USED PLUMBING FIXTURE.	
TYPE C - PIPE LENGTH GREATER THAN 25 FEET TERMINATING AT A FREQUENTLY USED PLUMBING FIXTURE.	
XXX-XX-XXX-XXX	DEAD LEG TAG
XXX-XX-XXX-XXX	MIXING VALVE TAG
REMEDIAL DEAD LEG	
NI-0	NON-INSULATED PIPE REFER TO SCHEDULE



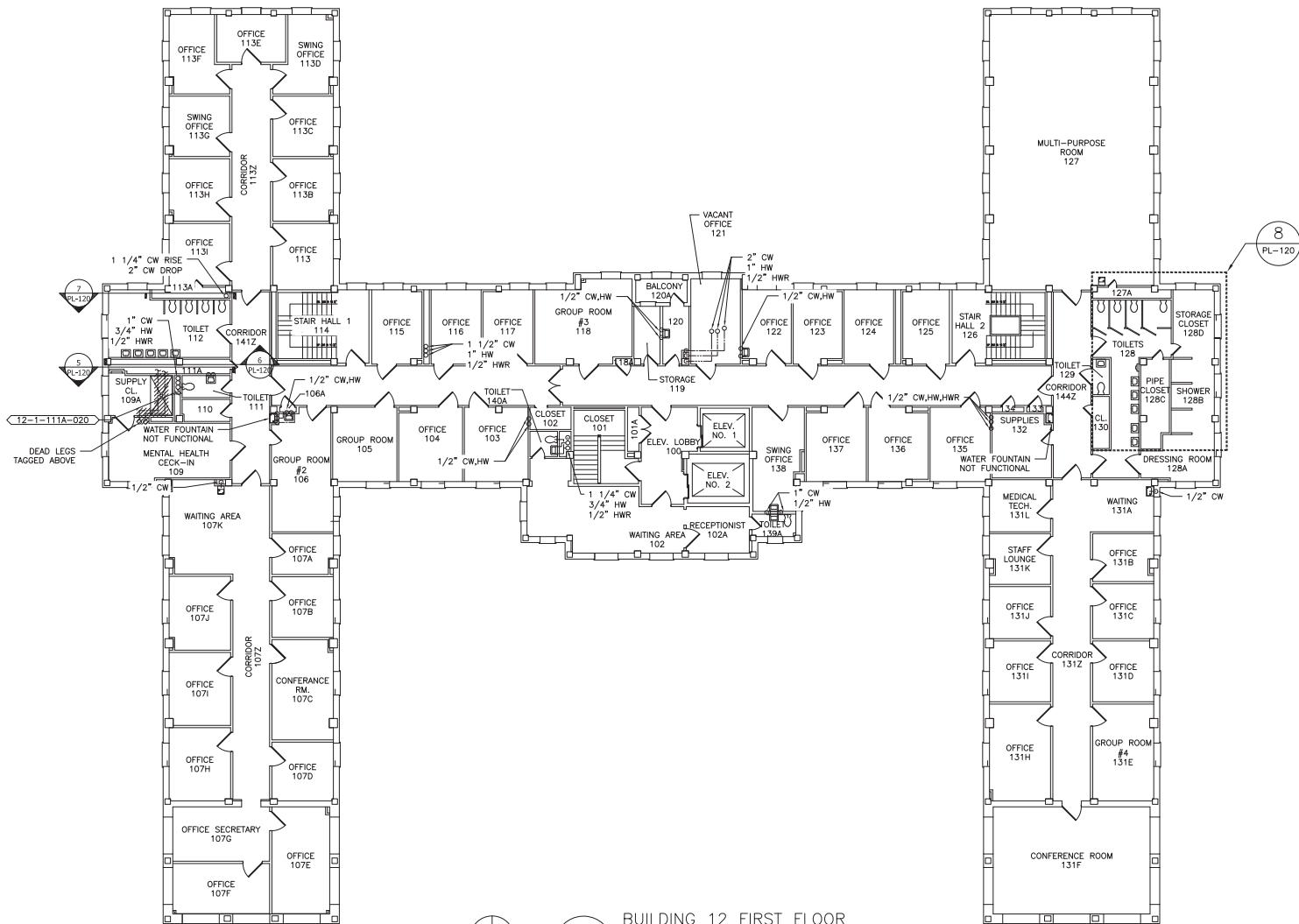
1
PL-117

BUILDING 12 GROUND FLOOR
PLUMBING AS BUILT/DEAD LEG PLAN
SCALE: 1/8"=1'-0"

100% WORKING DRAWINGS SUBMISSION

		CONSULTANTS:	ARCHITECT/ENGINEERS:	NORTH:			Drawing Title	Project Title	Project Number		Engineering Service
					Building 12 Ground Floor Plumbing As-Built / Dead-Leg Plan	Remove Domestic Dead-Legs at the Montrose Campus	620-18-119				
							Building(s) Number				
							12				
							Drawing Number				
					Approved: Facility Director, VAH/HCSS	Location	Montrose, New York				
							PL 117				
							Sheet 39 of 77				
100% Working Drawings Submission	03-09-2018					Approved: John Cliffe, Facility Chief of Engineering	Date	Checked	Drawn		
Revisions:	Date:						03-08-2018	MR	MF		

PLUMBING FIELD STUDY KEY SYMBOLS	
TYPE A - PIPE LENGTH GREATER THAN TWICE THE DIAMETER OF THE PIPE SIZE TERMINATING AT CAP, VALVE, OR FITTING.	
TYPE B - PIPE LENGTH GREATER THAN TWICE THE DIAMETER OF THE PIPES TERMINATING AT AN INFREQUENTLY USED PLUMBING FIXTURE.	
TYPE C - PIPE LENGTH GREATER THAN 25 FEET TERMINATING AT A FREQUENTLY USED PLUMBING FIXTURE.	
XXX-XX-XXX-XXX	DEAD LEG TAG
XXX-XX-XXX-XXX	MIXING VALVE TAG
REMEDIAL DEAD LEG	
NI-0	NON-INSULATED PIPE REFER TO SCHEDULE

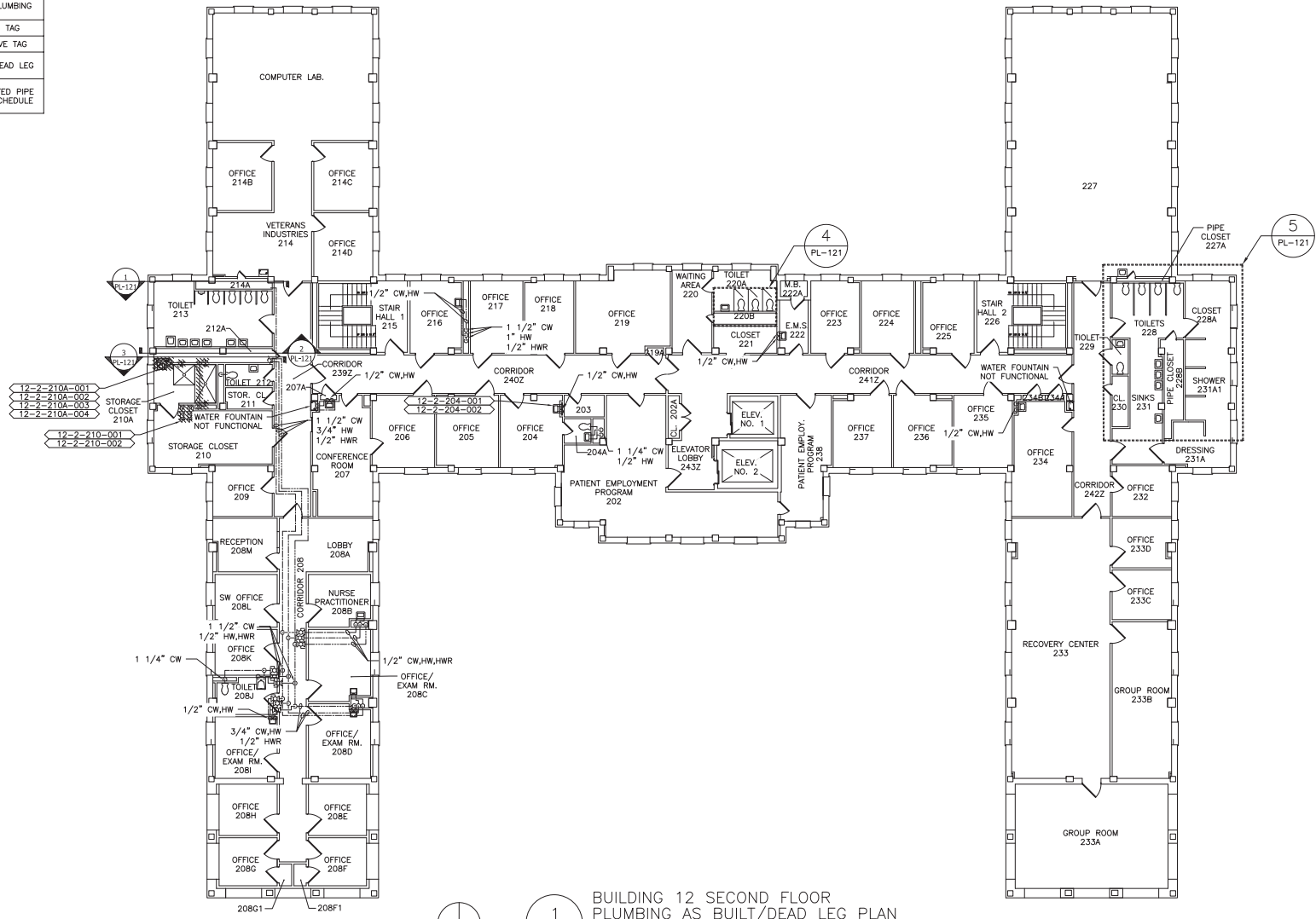


BUILDING 12 FIRST FLOOR
PLUMBING AS BUILT/DEAD LEG PLAN
SCALE: 1/8"=1'-0"

100% WORKING DRAWINGS SUBMISSION

		CONSULTANTS:	ARCHITECT/ENGINEERS:	NORTH:			Drawing Title	Project Title	Project Number	Engineering Service
					Building 12 First Floor Plumbing As-Built / Dead-Leg Plan	Remove Domestic Dead-Legs at the Montrose Campus	620-18-119			
							Building(s) Number			
							12			
					Approved: Facility Director, VAHVCS	Location				
						Montrose, New York				
						Approved: John Cliffe, Facility Chief of Engineering	Date	Checked	Drawn	PL 118
						03-08-2018	MR	MF	Sheet 40 of 77	
100% Working Drawings Submission	03-09-2018									
Revisions:	Date:									

PLUMBING FIELD STUDY KEY SYMBOLS	
TYPE A - PIPE LENGTH GREATER THAN TWICE THE DIAMETER OF THE PIPE SIZE TERMINATING AT CAP, VALVE, OR FITTING.	
TYPE B - PIPE LENGTH GREATER THAN TWICE THE DIAMETER OF THE PIPES TERMINATING AT AN INFREQUENTLY USED PLUMBING FIXTURE.	
TYPE C - PIPE LENGTH GREATER THAN 25 FEET TERMINATING AT A FREQUENTLY USED PLUMBING FIXTURE	
XXX-XX-XXX-XXX	DEAD LEG TAG
XXX-XX-XXX-XXX	MIXING VALVE TAG
///	REMEDiate DEAD LEG
NI-0	NON-INSULATED PIPE REFER TO SCHEDULE



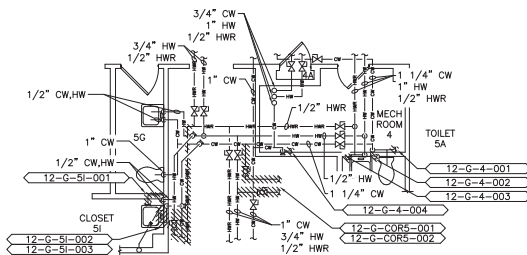
1
PL-119
BUILDING 12 SECOND FLOOR
PLUMBING AS BUILT/DEAD LEG PLAN
SCALE: 1/8"=1'-0"



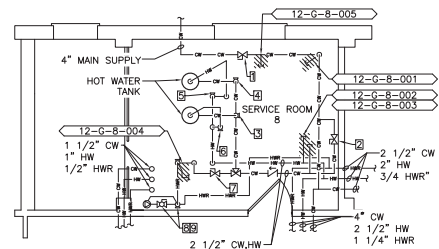
100% WORKING DRAWINGS SUBMISSION

		CONSULTANTS:	ARCHITECT/ENGINEERS:	NORTH:			Drawing Title	Project Title	Project Number			Engineering Service
					620-18-119							
					Building(s) Number							
					12							
					Drawing Number							
					Approved: Facility Director, VAHVHCS			Location				
					Approved: John Cliffe, Facility Chief of Engineering			Montrose, New York				
								Date	Checked	Drawn	PL 119	
								03-08-2018	MR	MF		
100% Working Drawings Submission	03-08-2018										Sheet 41 of 77	
Revisions:	Date:											

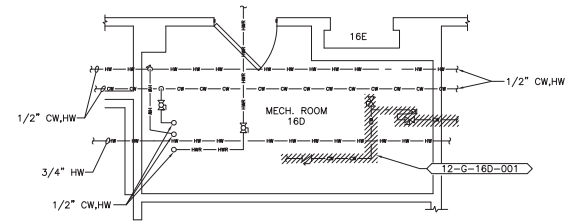
PLUMBING FIELD STUDY KEY SYMBOLS	
TYPE A - PIPE LENGTH GREATER THAN TWICE THE DIAMETER OF THE PIPE SIZE TERMINATING AT CAP, VALVE, OR FITTING.	
TYPE B - PIPE LENGTH GREATER THAN TWICE THE DIAMETER OF THE PIPES TERMINATING AT AN INFREQUENTLY USED PLUMBING FIXTURE.	
TYPE C - PIPE LENGTH GREATER THAN 25 FEET TERMINATING AT A FREQUENTLY USED PLUMBING FIXTURE.	
XXX-XX-XXX-XXX	DEAD LEG TAG
XXX-XX-XXX-XXX	MIXING VALVE TAG
XXXX-XXXX-XXXX-XXXX	REMEDiate DEAD LEG
NI-0	NON-INSULATED PIPE REFER TO SCHEDULE



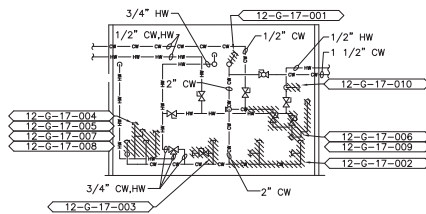
1
PL-120
SCALE: 1/4"=1'-0"
PROJECT NORTH



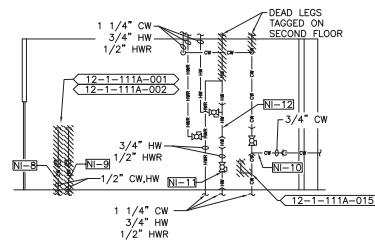
2
PL-120
SCALE: 1/4"=1'-0"
PROJECT NORTH



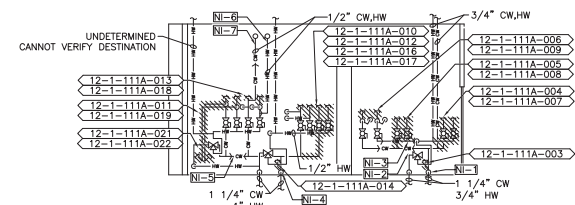
3
PL-120
SCALE: 1/2"=1'-0"
PROJECT NORTH



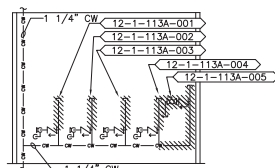
4
PL-120
SCALE: 1/4"=1'-0"



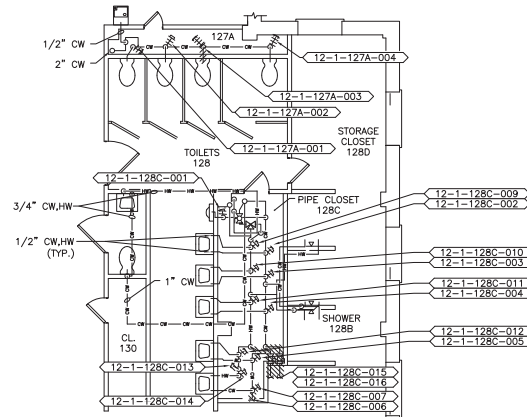
5
PL-120
SCALE: 1/4"=1'-0"



6
PL-120
SCALE: 1/4"=1'-0"



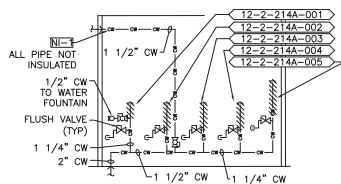
7
PL-120
SCALE: N.T.S.



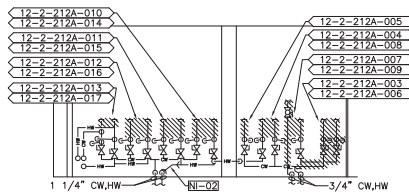
8
PL-120
SCALE: 1/4"=1'-0"
PROJECT NORTH

		CONSULTANTS:	ARCHITECT/ENGINEERS:	NORTH:			Drawing Title	Project Title	Project Number	Engineering Service	
						Building 12 Elevation & Enlarged Plans #1	Remove Domestic Dead-Legs at the Montrose Campus	620-18-119			
								Building(s) Number			
								12			
							Approved: Facility Director, VAH/HCS:	Drawing Number			
								Montrose, New York			
							Approved: John Cliffe, Facility Chief of Engineering	Date	Checked		Drawn
								03-08-2018	MR		MF
100% Working Drawings Submission	03-09-2018								PL 120		
Revised	Date:								Sheet 42 of 77		

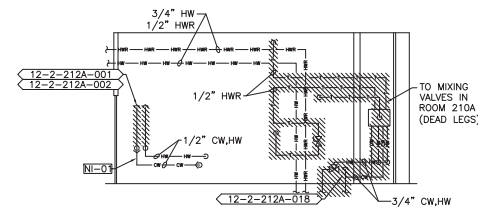
PLUMBING FIELD STUDY KEY SYMBOLS	
TYPE A — PIPE LENGTH GREATER THAN TWICE THE DIAMETER OF THE PIPE SIZE TERMINATING AT CAP, VALVE, OR FITTING.	
TYPE B — PIPE LENGTH GREATER THAN TWICE THE DIAMETER OF THE PIPES TERMINATING AT AN INFREQUENTLY USED PLUMBING FIXTURE.	
TYPE C — PIPE LENGTH GREATER THAN 25 FEET TERMINATING AT A FREQUENTLY USED PLUMBING FIXTURE.	
XXX-XX-XXX-XXX	DEAD LEG TAG
XXX-XX-XXX-XXX	MIXING VALVE TAG
REMEDIAL DEAD LEG	
NI-0	NON-INSULATED PIPE REFER TO SCHEDULE



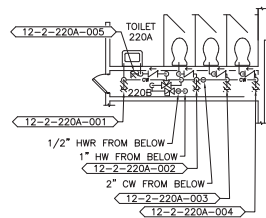
1
PL-121
SCALE: N.T.S.
BUILDING 12, SECOND FLOOR
PIPE CLOSET 214A ELEVATION



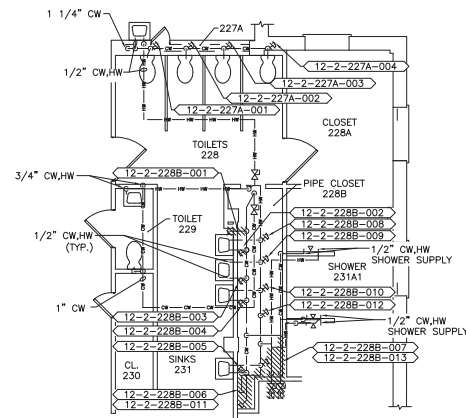
2
PL-121
SCALE: N.T.S.
BUILDING 12, SECOND FLOOR
PIPE CLOSET 212A ELEVATION



3
PL-121
SCALE: N.T.S.
BUILDING 12, SECOND FLOOR
PIPE CLOSET 212A ELEVATION



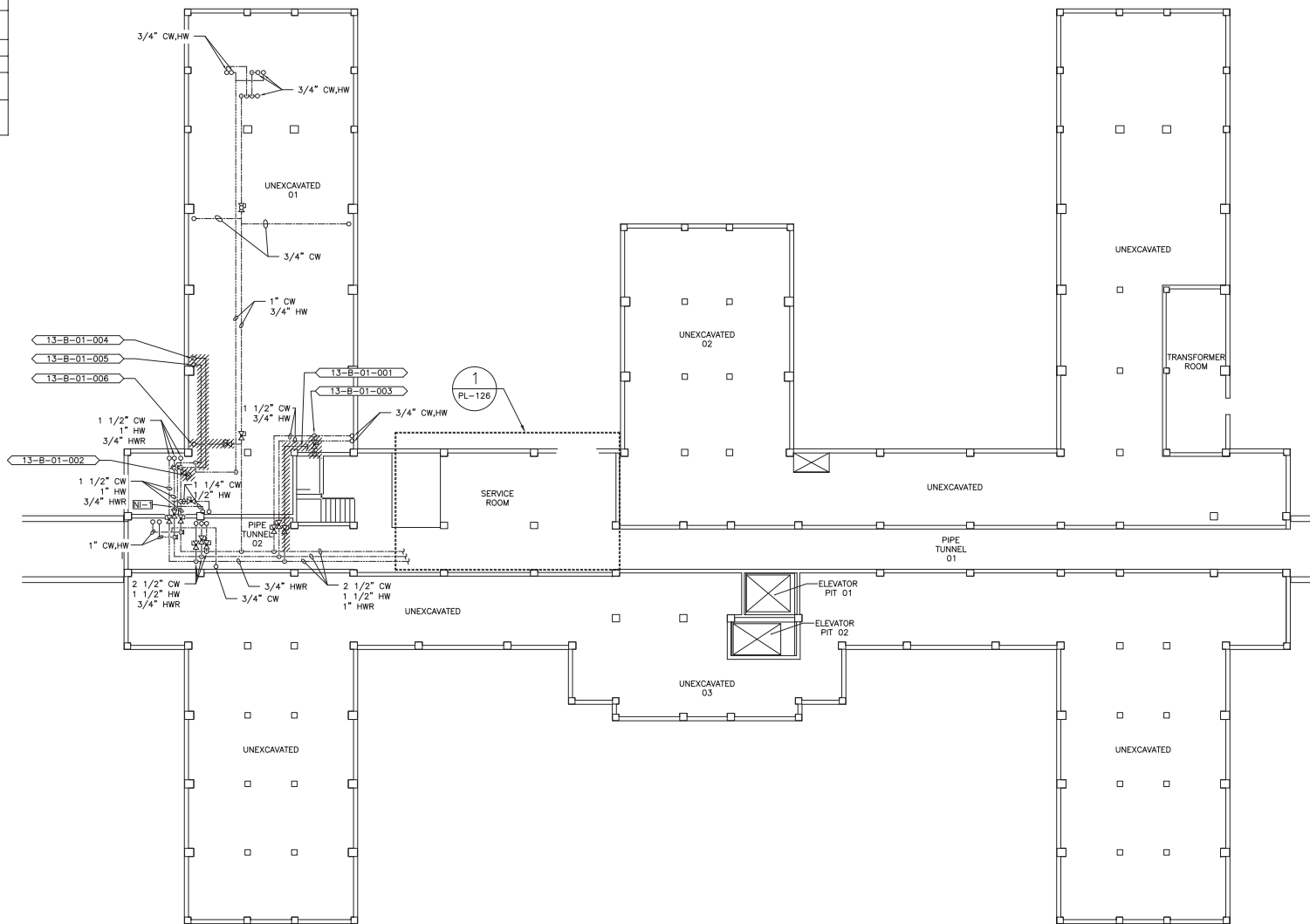
4
PL-121
SCALE: 1/4"=1'-0"
BUILDING 12, SECOND FLOOR
PIPE CLOSET 220B ENLARGED PLAN



5
PL-121
SCALE: 1/4"=1'-0"
BUILDING 12, SECOND FLOOR
PIPE CLOSET 228B ENLARGED PLAN

		CONSULTANTS:	ARCHITECT/ENGINEERS:	NORTH:																																																																																																																																																																																																																																																																																																																																																																																																																																																																																																																																																																																																																																																																																																																																																																																																																																																																																																																																																																																																																																																																																																																																																																																																																																																																																																																																																																																																																																																																																																																															
--	--	--------------	----------------------	--------	--	--	--	--	--	--	--	--	--	--	--	--	--	--	--	--	--	--	--	--	--	--	--	--	--	--	--	--	--	--	--	--	--	--	--	--	--	--	--	--	--	--	--	--	--	--	--	--	--	--	--	--	--	--	--	--	--	--	--	--	--	--	--	--	--	--	--	--	--	--	--	--	--	--	--	--	--	--	--	--	--	--	--	--	--	--	--	--	--	--	--	--	--	--	--	--	--	--	--	--	--	--	--	--	--	--	--	--	--	--	--	--	--	--	--	--	--	--	--	--	--	--	--	--	--	--	--	--	--	--	--	--	--	--	--	--	--	--	--	--	--	--	--	--	--	--	--	--	--	--	--	--	--	--	--	--	--	--	--	--	--	--	--	--	--	--	--	--	--	--	--	--	--	--	--	--	--	--	--	--	--	--	--	--	--	--	--	--	--	--	--	--	--	--	--	--	--	--	--	--	--	--	--	--	--	--	--	--	--	--	--	--	--	--	--	--	--	--	--	--	--	--	--	--	--	--	--	--	--	--	--	--	--	--	--	--	--	--	--	--	--	--	--	--	--	--	--	--	--	--	--	--	--	--	--	--	--	--	--	--	--	--	--	--	--	--	--	--	--	--	--	--	--	--	--	--	--	--	--	--	--	--	--	--	--	--	--	--	--	--	--	--	--	--	--	--	--	--	--	--	--	--	--	--	--	--	--	--	--	--	--	--	--	--	--	--	--	--	--	--	--	--	--	--	--	--	--	--	--	--	--	--	--	--	--	--	--	--	--	--	--	--	--	--	--	--	--	--	--	--	--	--	--	--	--	--	--	--	--	--	--	--	--	--	--	--	--	--	--	--	--	--	--	--	--	--	--	--	--	--	--	--	--	--	--	--	--	--	--	--	--	--	--	--	--	--	--	--	--	--	--	--	--	--	--	--	--	--	--	--	--	--	--	--	--	--	--	--	--	--	--	--	--	--	--	--	--	--	--	--	--	--	--	--	--	--	--	--	--	--	--	--	--	--	--	--	--	--	--	--	--	--	--	--	--	--	--	--	--	--	--	--	--	--	--	--	--	--	--	--	--	--	--	--	--	--	--	--	--	--	--	--	--	--	--	--	--	--	--	--	--	--	--	--	--	--	--	--	--	--	--	--	--	--	--	--	--	--	--	--	--	--	--	--	--	--	--	--	--	--	--	--	--	--	--	--	--	--	--	--	--	--	--	--	--	--	--	--	--	--	--	--	--	--	--	--	--	--	--	--	--	--	--	--	--	--	--	--	--	--	--	--	--	--	--	--	--	--	--	--	--	--	--	--	--	--	--	--	--	--	--	--	--	--	--	--	--	--	--	--	--	--	--	--	--	--	--	--	--	--	--	--	--	--	--	--	--	--	--	--	--	--	--	--	--	--	--	--	--	--	--	--	--	--	--	--	--	--	--	--	--	--	--	--	--	--	--	--	--	--	--	--	--	--	--	--	--	--	--	--	--	--	--	--	--	--	--	--	--	--	--	--	--	--	--	--	--	--	--	--	--	--	--	--	--	--	--	--	--	--	--	--	--	--	--	--	--	--	--	--	--	--	--	--	--	--	--	--	--	--	--	--	--	--	--	--	--	--	--	--	--	--	--	--	--	--	--	--	--	--	--	--	--	--	--	--	--	--	--	--	--	--	--	--	--	--	--	--	--	--	--	--	--	--	--	--	--	--	--	--	--	--	--	--	--	--	--	--	--	--	--	--	--	--	--	--	--	--	--	--	--	--	--	--	--	--	--	--	--	--	--	--	--	--	--	--	--	--	--	--	--	--	--	--	--	--	--	--	--	--	--	--	--	--	--	--	--	--	--	--	--	--	--	--	--	--	--	--	--	--	--	--	--	--	--	--	--	--	--	--	--	--	--	--	--	--	--	--	--	--	--	--	--	--	--	--	--	--	--	--	--	--	--	--	--	--	--	--	--	--	--	--	--	--	--	--	--	--	--	--	--	--	--	--	--	--	--	--	--	--	--	--	--	--	--	--	--	--	--	--	--	--	--	--	--	--	--	--	--	--	--	--	--	--	--	--	--	--	--	--	--	--	--	--	--	--	--	--	--	--	--	--	--	--	--	--	--	--	--	--	--	--	--	--	--	--	--	--	--	--	--	--	--	--	--	--	--	--	--	--	--	--	--	--	--	--	--	--	--	--	--	--	--	--	--	--	--	--	--	--	--	--	--	--	--	--	--	--	--	--	--	--	--	--	--	--	--	--	--	--	--	--	--	--	--	--	--	--	--	--	--	--	--	--	--	--	--	--	--	--	--	--	--	--	--	--	--	--	--	--	--	--	--	--	--	--	--	--	--	--	--	--	--	--	--	--	--	--	--	--	--	--	--	--	--	--	--	--	--	--	--	--	--	--	--	--	--	--	--	--	--	--	--	--	--	--	--	--	--	--	--	--	--	--	--	--	--	--	--	--	--	--	--	--	--	--	--	--	--	--	--	--	--	--	--	--	--	--	--	--	--	--	--	--	--	--	--	--	--	--	--	--	--	--	--	--	--	--	--	--	--	--	--	--	--	--	--	--	--	--	--	--	--	--	--	--	--	--	--	--	--	--	--	--	--	--	--	--	--	--	--	--	--	--	--	--	--	--	--	--	--	--	--	--	--	--	--	--	--	--	--	--	--	--	--	--	--	--	--	--	--	--	--	--	--	--	--	--	--	--	--	--	--	--	--	--	--	--	--	--	--	--	--	--	--	--	--	--	--	--	--	--	--	--	--	--	--	--	--	--	--	--	--	--	--	--	--	--	--	--	--	--	--	--	--	--	--	--	--	--	--	--	--	--	--	--	--	--	--	--	--	--	--	--	--	--	--	--	--	--	--	--	--	--	--	--	--	--	--	--	--	--	--	--	--	--	--	--	--	--	--	--	--	--	--	--	--	--	--	--	--	--	--	--	--	--	--	--	--	--	--	--	--	--	--	--	--	--	--	--	--	--	--	--	--	--	--	--	--	--	--	--	--	--	--	--	--	--	--	--	--	--	--	--	--	--	--	--	--	--	--	--	--	--	--	--	--	--	--	--	--	--	--	--	--	--	--	--	--	--	--	--	--	--	--	--	--	--	--	--	--	--	--	--	--	--	--	--	--	--	--	--	--	--	--	--	--	--	--	--	--	--	--	--	--	--	--	--	--	--	--	--	--	--	--	--	--	--	--	--	--	--	--	--	--	--	--	--	--	--	--	--	--	--	--	--	--	--	--	--	--	--	--	--	--	--	--	--	--	--	--	--	--	--	--	--	--	--	--	--	--	--	--	--	--	--	--	--	--	--	--	--	--	--	--	--	--	--	--	--	--

PLUMBING FIELD STUDY KEY SYMBOLS	
TYPE A - PIPE LENGTH GREATER THAN TWICE THE DIAMETER OF THE PIPE SIZE TERMINATING AT CAP, VALVE, OR FITTING.	
TYPE B - PIPE LENGTH GREATER THAN TWICE THE DIAMETER OF THE PIPES TERMINATING AT AN INFREQUENTLY USED PLUMBING FIXTURE.	
TYPE C - PIPE LENGTH GREATER THAN 25 FEET TERMINATING AT A FREQUENTLY USED PLUMBING FIXTURE	
XXX-XX-XXX-XXX	DEAD LEG TAG
XXX-XX-XXX-XXX	MIXING VALVE TAG
///	REMEDiate DEAD LEG
NI-0	NON-INSULATED PIPE REFER TO SCHEDULE

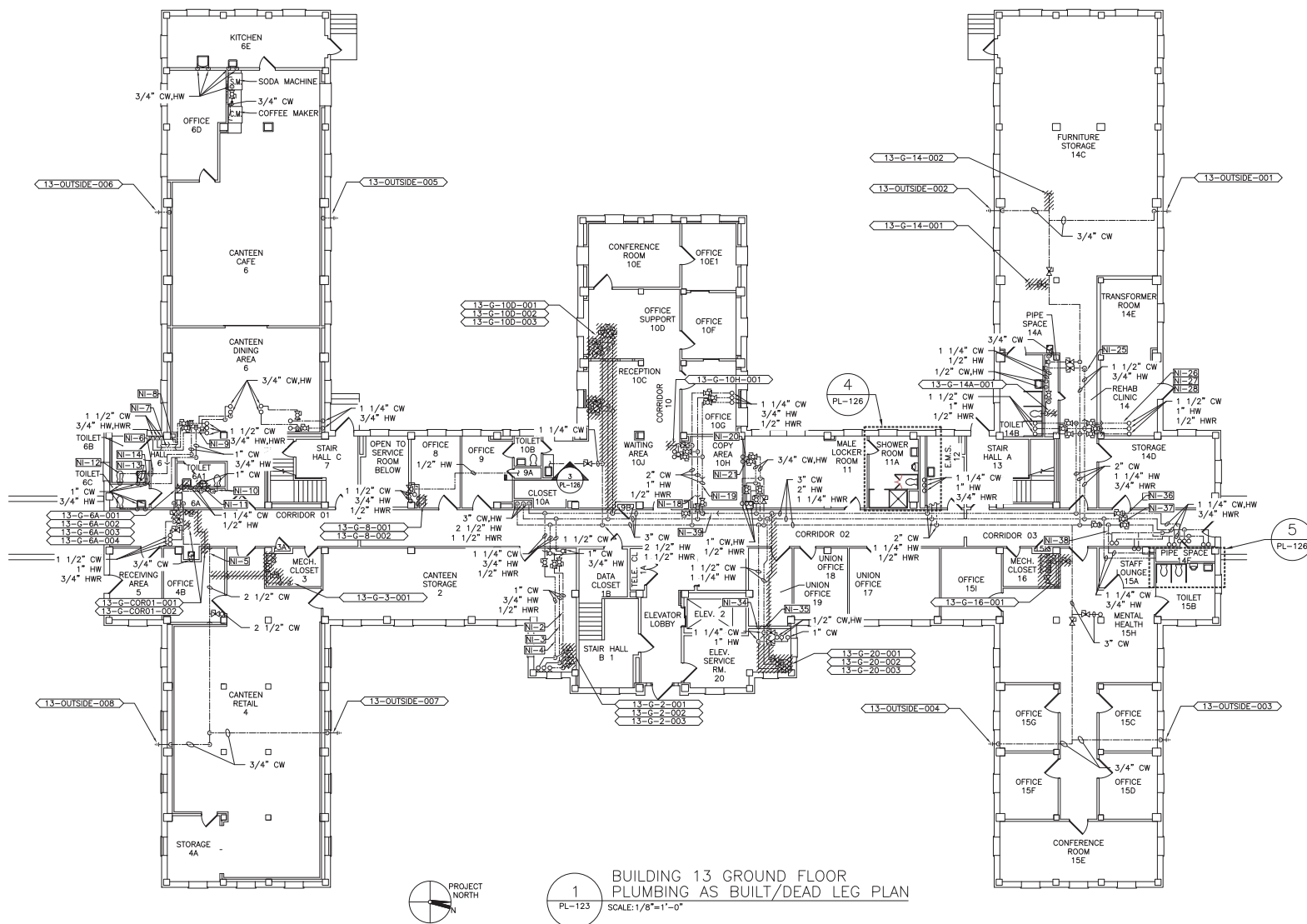


1
PL-122

**BUILDING 13 BASEMENT
PLUMBING AS-BUILT/DEAD LEG PLAN**
SCALE: 1/8"=1'-0"

		CONSULTANTS:	ARCHITECT/ENGINEERS:	NORTH:			Drawing Title	Project Title	Project Number	Engineering Service
					Building 13 Basement Plumbing As-Built / Dead-Leg Plan	Remove Domestic Dead-Legs at the Montrose Campus	620-18-119			
							Building(s) Number			
							13			
						Approved: Facility Director, VAH/HCS	Location	Drawing Number		
							Montrose, New York	PL 122		
						Approved: John Cliffe, Facility Chief of Engineering	Date	Checked	Drawn	
							03-08-2018	MR	MF	
100% Working Drawings Submission	03-09-2018									
Revisions:	Date:									


PLUMBING FIELD STUDY KEY SYMBOLS	
TYPE A - PIPE LENGTH GREATER THAN TWICE THE DIAMETER OF THE PIPE SIZE TERMINATING AT CAP, VALVE, OR FITTING.	
TYPE B - PIPE LENGTH GREATER THAN TWICE THE DIAMETER OF THE PIPES TERMINATING AT AN INFREQUENTLY USED PLUMBING FIXTURE.	
TYPE C - PIPE LENGTH GREATER THAN 25 FEET TERMINATING AT A FREQUENTLY USED PLUMBING FIXTURE	
XXX-XX-XXX-XXX	DEAD LEG TAG
XXX-XX-XXX-XXX	MIXING VALVE TAG
REMEDIAL DEAD LEG	
NI-0	NON-INSULATED PIPE REFER TO SCHEDULE



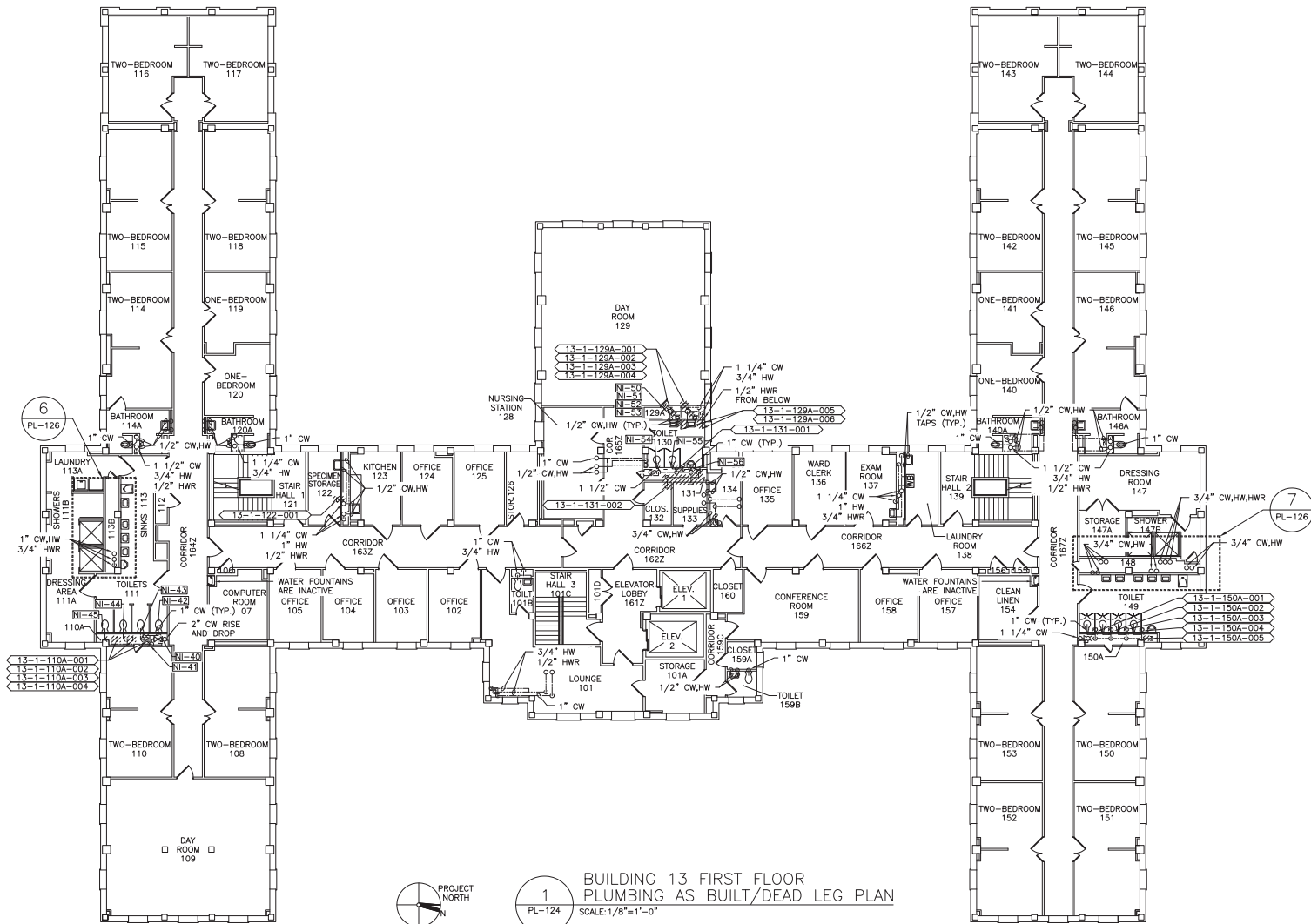
1
PL-123

BUILDING 13 GROUND FLOOR
PLUMBING AS BUILT/DEAD LEG PLAN
SCALE: 1/8"=1'-0"

100% WORKING DRAWINGS SUBMISSION

		CONSULTANTS:	ARCHITECT/ENGINEERS:	NORTH:			Drawing Title	Project Title	Project Number	Engineering Service
							Building 13 Ground Floor Plumbing As-Built / Dead-Leg Plan	Remove Domestic Dead-Legs at the Montrose Campus	620-18-119	
									Building(s) Number	
									13	
							Approved: Facility Director, VAH/VHCS:	Location	Drawing Number	
								Montrose, New York		
100% Working Drawings Submission	03-09-2018				Approved: John Cliffe, Facility Chief of Engineering	Date	Checked	Drawn	PL 123	
Revisions:	Date:					03-08-2018	MR	MF		

PLUMBING FIELD STUDY KEY SYMBOLS	
TYPE A - PIPE LENGTH GREATER THAN TWICE THE DIAMETER OF THE PIPE SIZE TERMINATING AT CAP, VALVE, OR FITTING.	
TYPE B - PIPE LENGTH GREATER THAN TWICE THE DIAMETER OF THE PIPES TERMINATING AT AN INFREQUENTLY USED PLUMBING FIXTURE.	
TYPE C - PIPE LENGTH GREATER THAN 25 FEET TERMINATING AT A FREQUENTLY USED PLUMBING FIXTURE.	
XXX-XX-XXX-XXX	DEAD LEG TAG
XXX-XX-XXX-XXX	MIXING VALVE TAG
REMEDIAL DEAD LEG	
NI-0	NON-INSULATED PIPE REFER TO SCHEDULE



1
PL-124

BUILDING 13 FIRST FLOOR PLUMBING AS-BUILT/DEAD LEG PLAN

SCALE: 1/8"=1'-0"

100% WORKING DRAWINGS SUBMISSION

		CONSULTANTS:	ARCHITECT/ENGINEERS:	NORTH:			Drawing Title	Project Title	Project Number	<div>Engineering Service</div>
							Building 13 First Floor Plumbing As-Built / Dead-Leg Plan	Remove Domestic Dead-Legs at the Montrose Campus	620-18-119	
									Building(s) Number	
									13	
							Approved: Facility Director - VAH/HCS:	Location	Drawing Number	
								Montrose, New York		
							Approved: John Cliffe, Facility Chief of Engineering	Date	PL 124	
								03-08-2018	MR	
100% Working Drawings Submission	03-09-2018									
Revisions:	Date:									