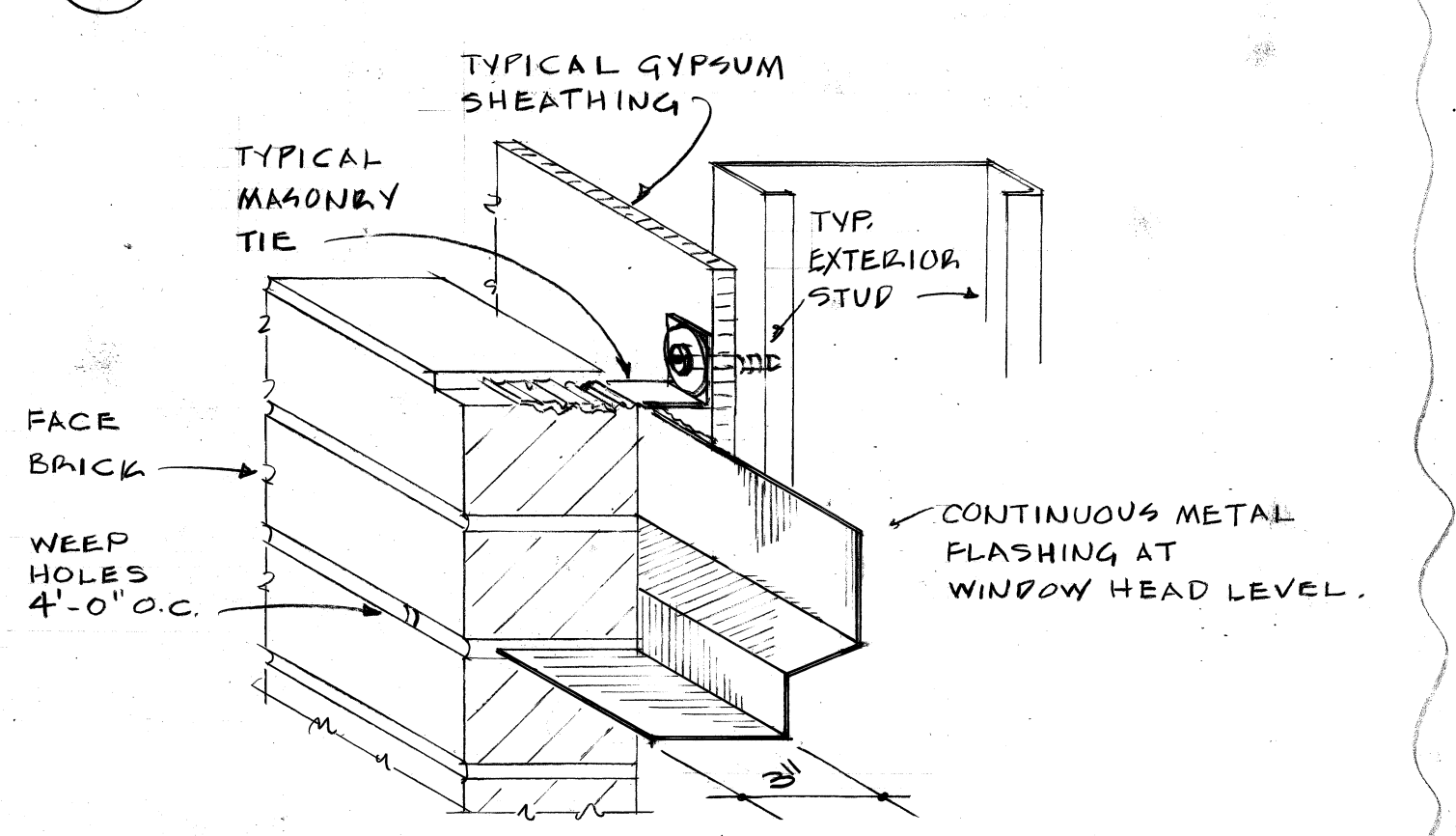
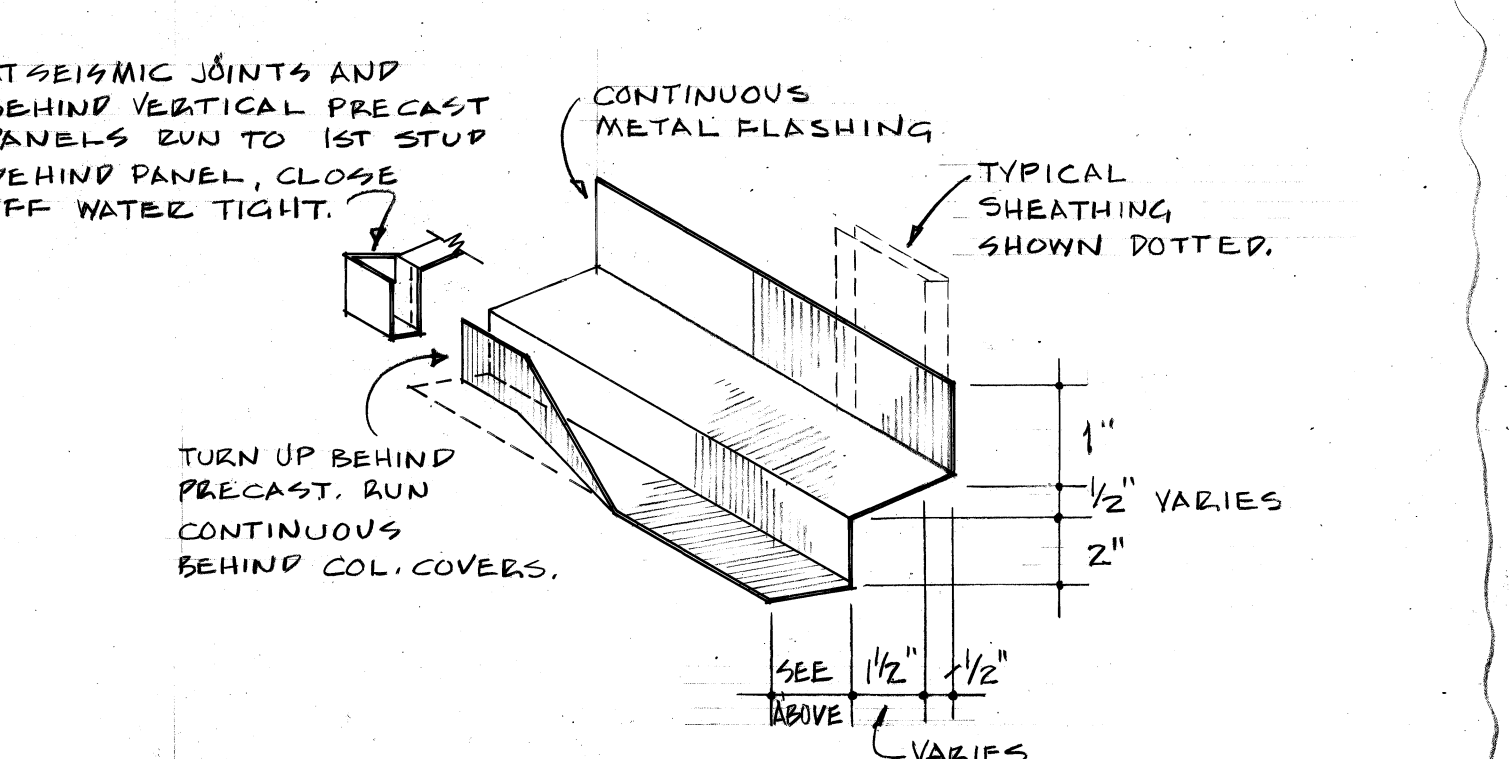


13 HORIZONTAL FLASHING AT WINDOW HEAD
SCALE: 3" = 1'-0"



12 HORIZONTAL FLASHING AT BRICKWORK
SCALE: 3" = 1'-0"



11 CONTINUOUS HORIZONTAL FLASHING
SCALE: 3" = 1'-0"

SEE FCO-14 6/15/77 FOR CHANGE IN INSTALLATION OF THRU-WALL FLASHING
SEE MM-3 FOR WINDOW FLASHING MODIFICATIONS 11/17/77

MM-5	11/17/77	FLASHING MODIFICATION, D-58
FCO-6	5/27/77	EXT. WALL SECTION AT COLUMN
FCO-14	6/15/77	THRU-WALL FLASHING
NO.	DATE	DESCRIPTION
REVISIONS		
WINDOW DETAILS		
PROJECT NO.	400 BED REPLACEMENT HOSPITAL - PHASE 2	
OWNER	LWC	CGJ
DATE	23 SEPT. 1976	
DESIGNED BY	LOVE, COBB AND McELVEEN ARCHITECTS, INC.	
ENGINEER	LOCKWOOD GREENE ENGINEERS, INC.	
PROJECT NUMBER	100-DE-16	
DATE	14 OF 78	
APPROVED BY	544-024	
VETERANS ADMINISTRATION		
VAH, COLUMBIA, SOUTH CAROLINA		



5-1-2-1960

AS BUILT

