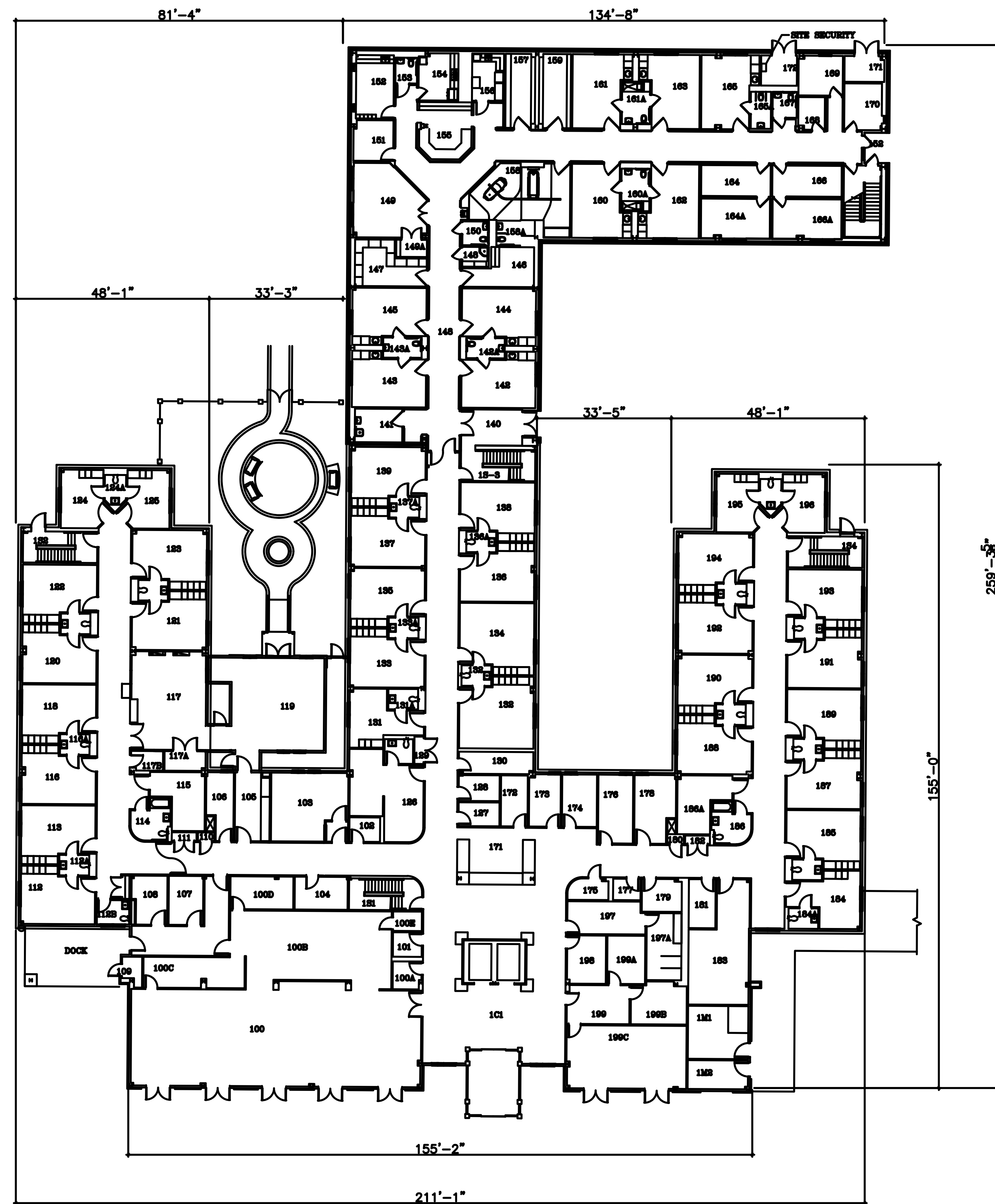


one-eighth inch = one foot  
one-quarter inch = one foot  
three-eighths inch = one foot  
one-half inch = one foot  
three-quarters inch = one foot  
one-inch = one foot  
one and one-half inches = one foot



1 1st FLOOR PLAN

Drawing Title <b>BUILDING 45</b>		Project Title <b>1st FLOOR</b>		Date
Approved Division Chief		Building Number <b>45</b>	Checked <b>MAP</b>	Project No.
Approved Service Director		Location <b>Alexandria La.</b>	Drawn <b>MAP</b>	DRAWING NO. <b>1</b>

Department of  
Veterans Affairs