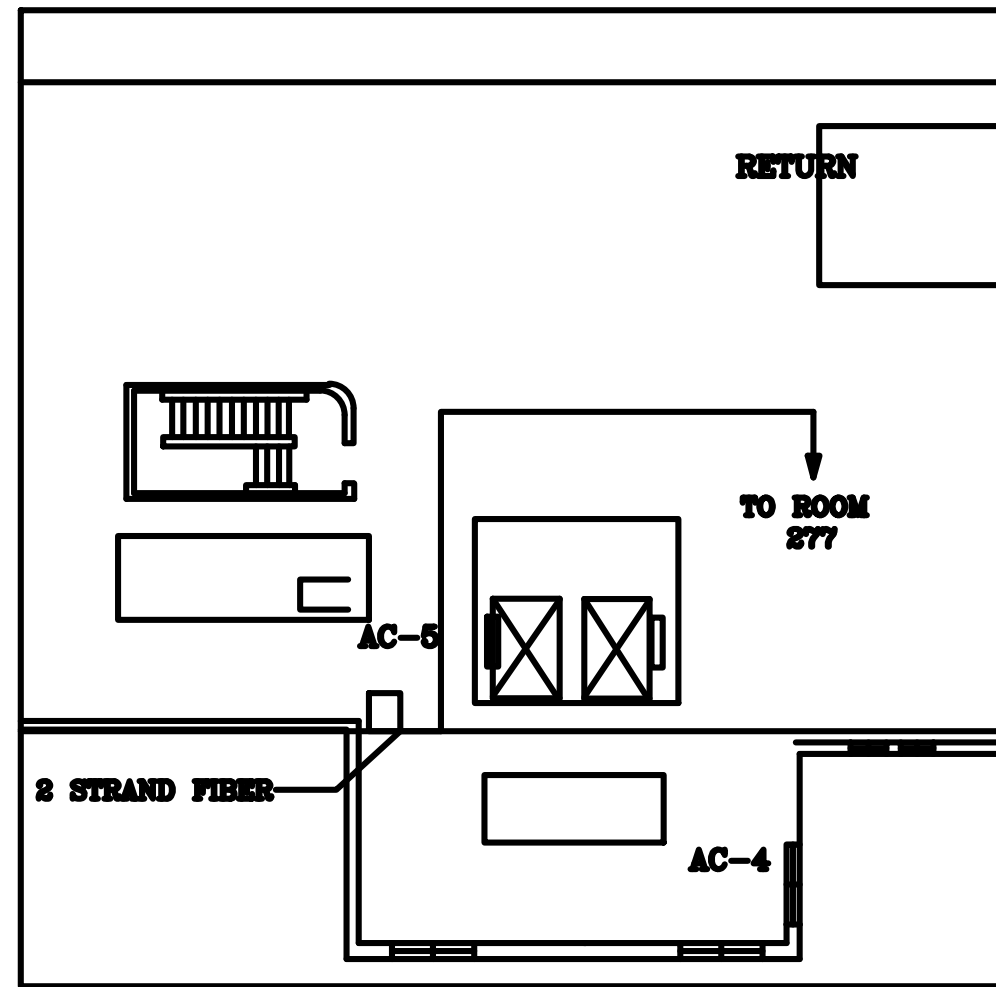
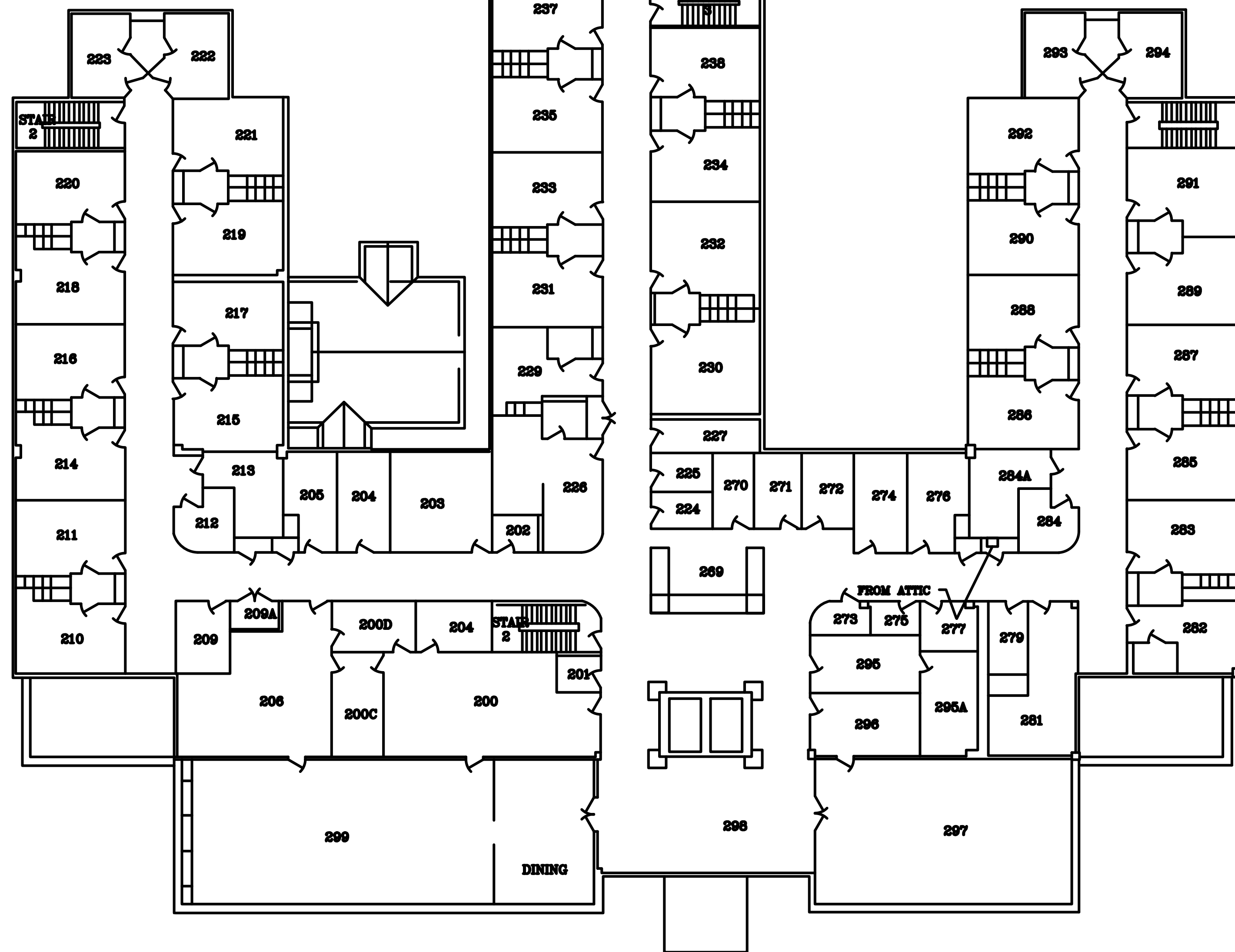


one-eighth inch = one foot  
one-quarter inch = one foot  
three-eighths inch = one foot  
one-half inch = one foot  
one inch = one foot  
one and one-half inches = one foot



ATTIC FLOOR PLAN



2nd FLOOR PLAN

Drawing Title <b>BUILDING 45</b>		Project Title <b>2nd FLOOR</b>		Date
Approved Division Chief		Building Number <b>45</b>	Checked <b>MAP</b>	Project No.
Approved Service Director		Location <b>Alexandria La.</b>		DRAWING NO. <b>2</b>

Office of Facilities  
Department of Veterans Affairs