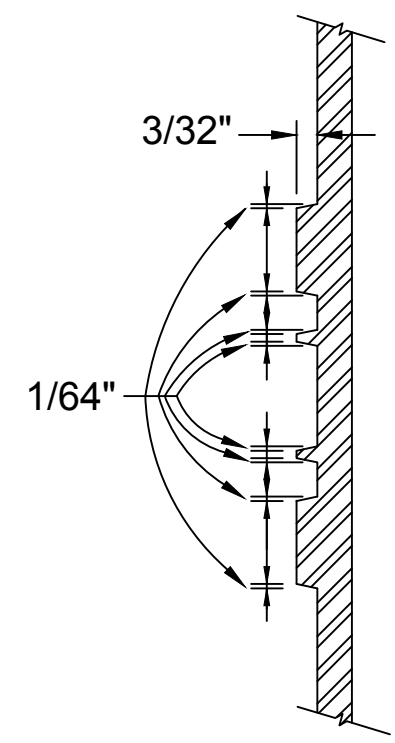
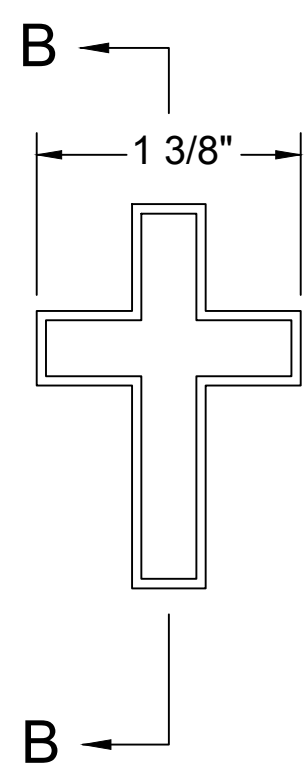


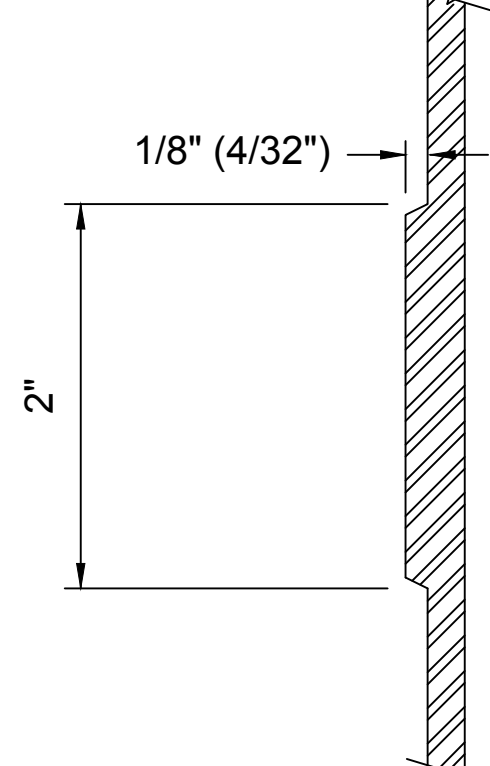
HEBREW  
(3)



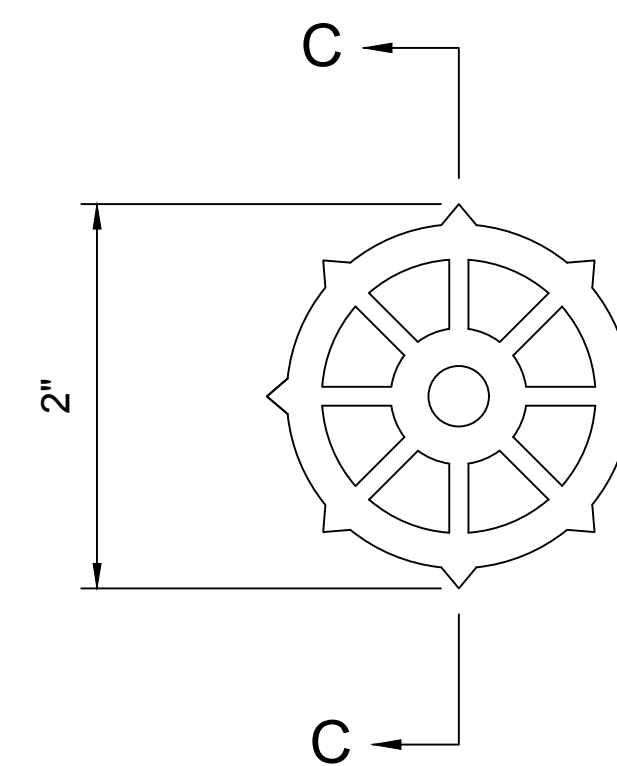
SECTION A-A



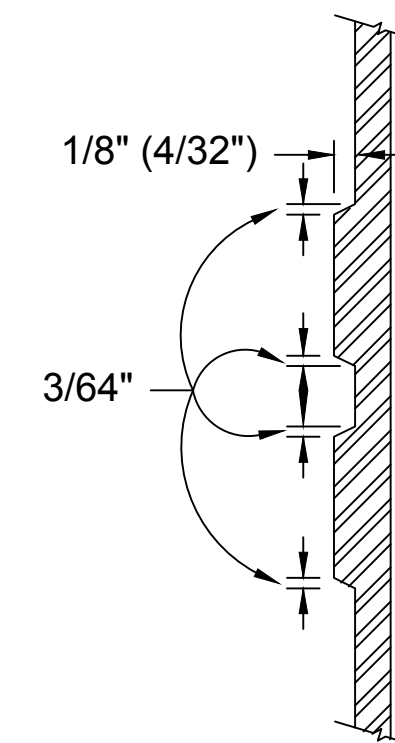
CHRISTIAN  
(1)



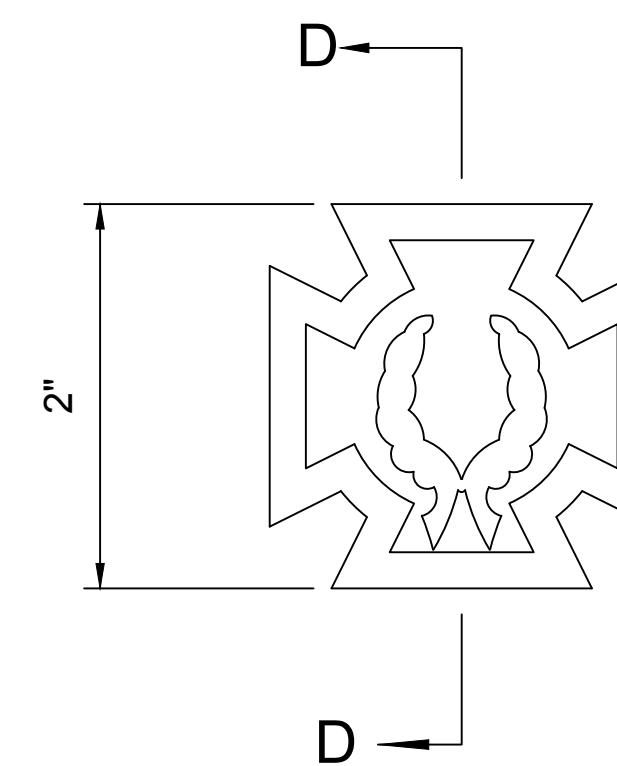
SECTION B-B



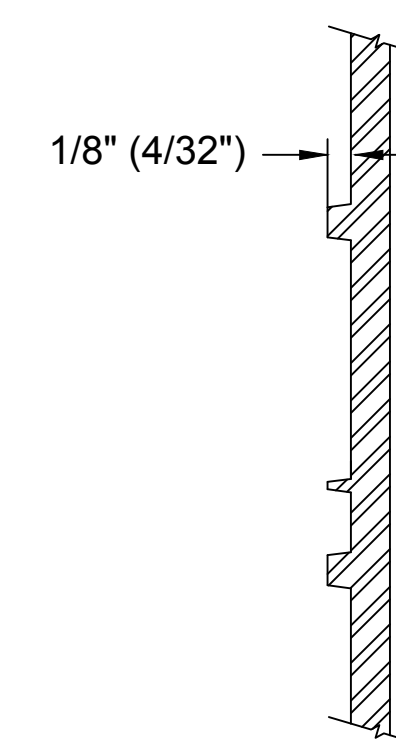
BUDDHIST  
(2)



SECTION C-C



CONFEDERATE  
(SOUTHERN CROSS OF HONOR)  
(50)



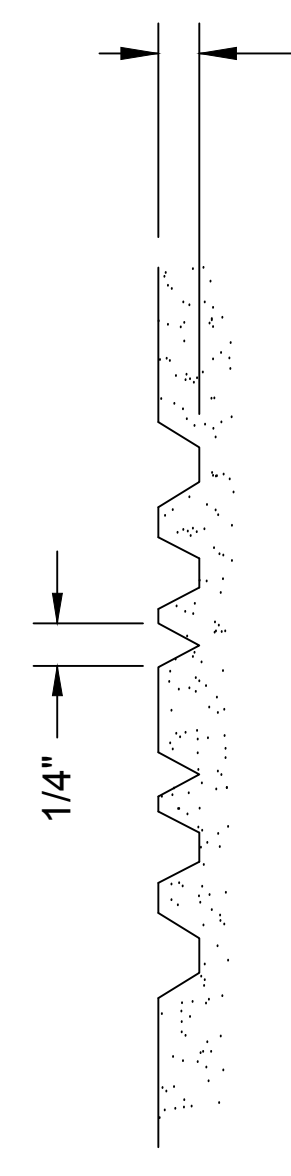
SECTION D-D

## RAISED BRONZE

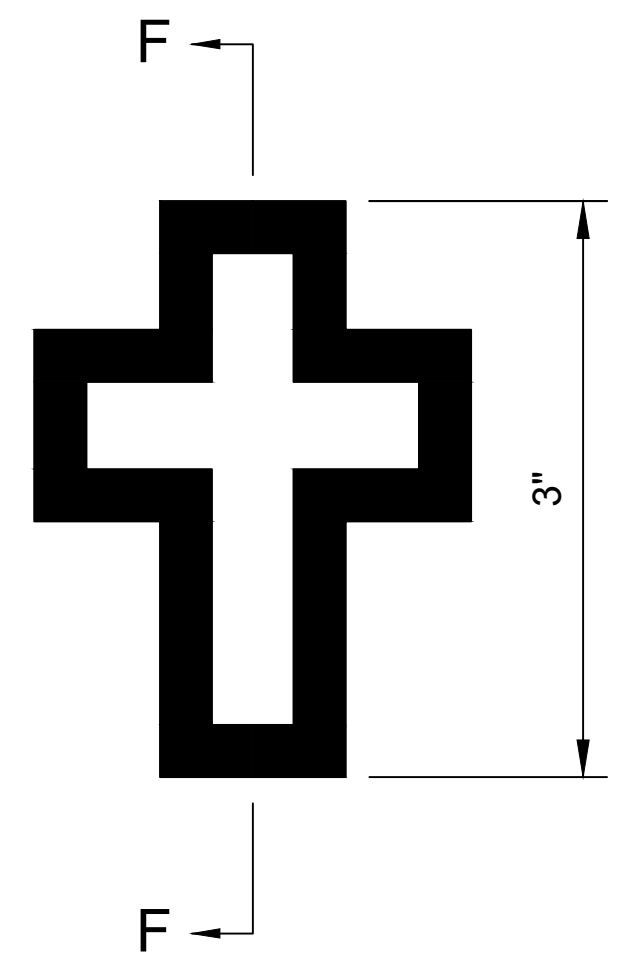
SCALE: 1"=1"



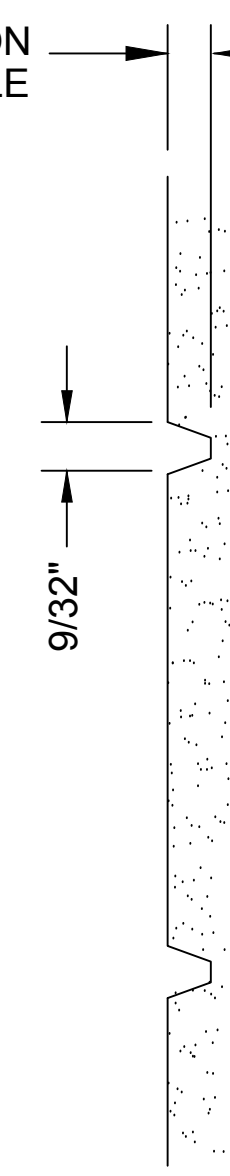
JUDAISM  
(3)



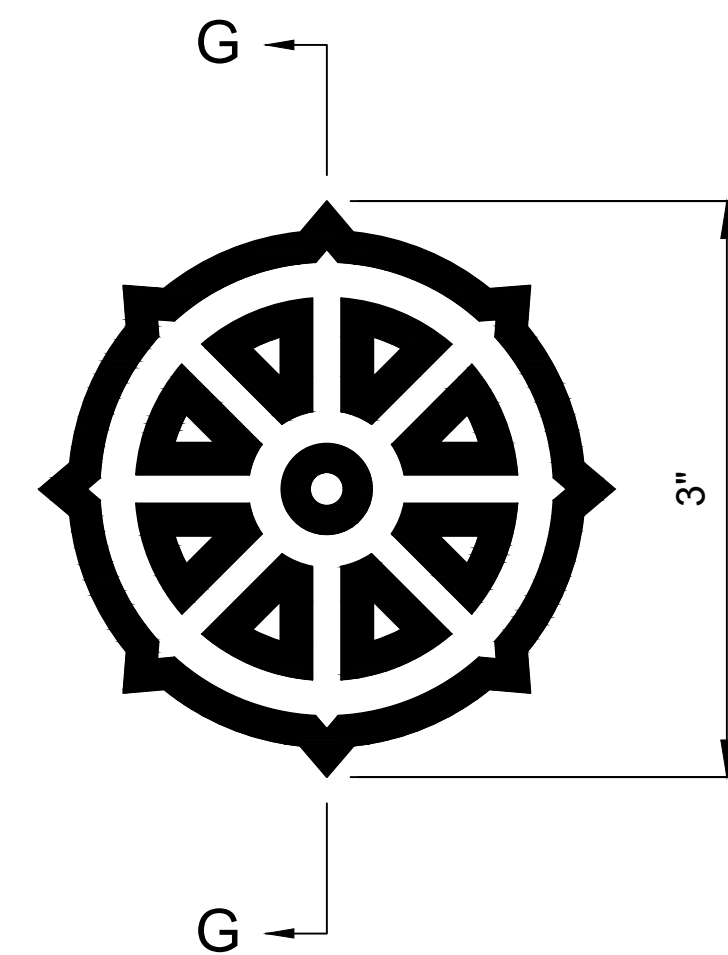
SECTION E-E



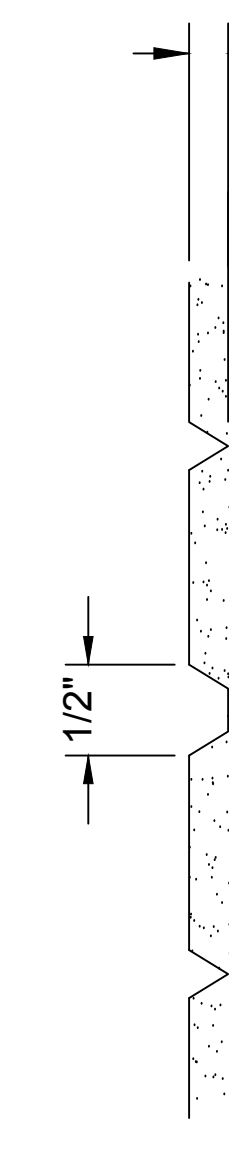
CHRISTIAN



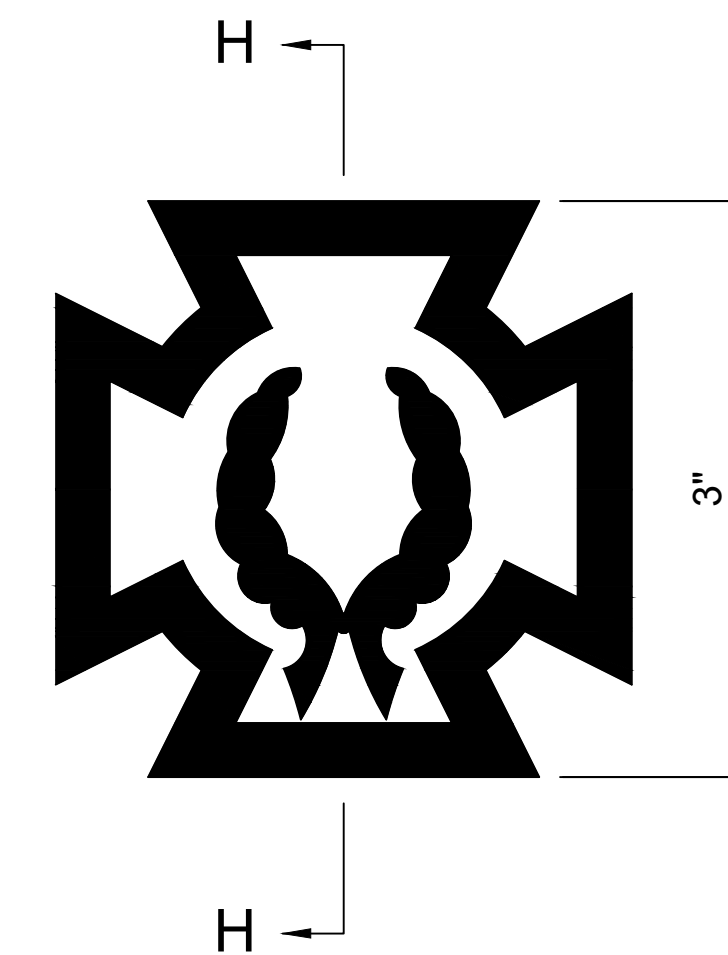
SECTION F-F



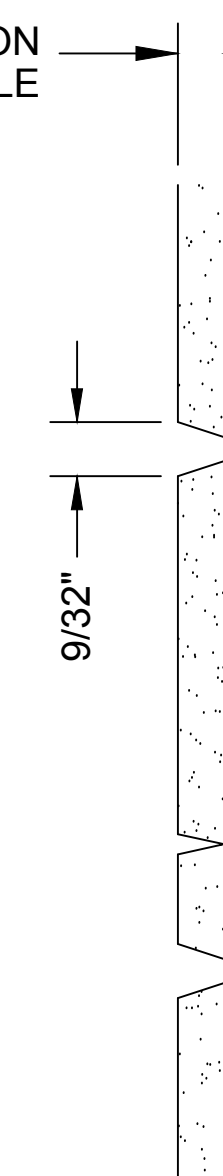
BUDDHIST  
(2)



SECTION G-G



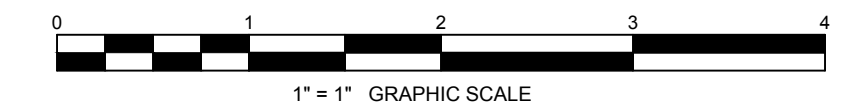
CONFEDERATE (SOUTHERN CROSS OF HONOR)  
(50)



SECTION H-H

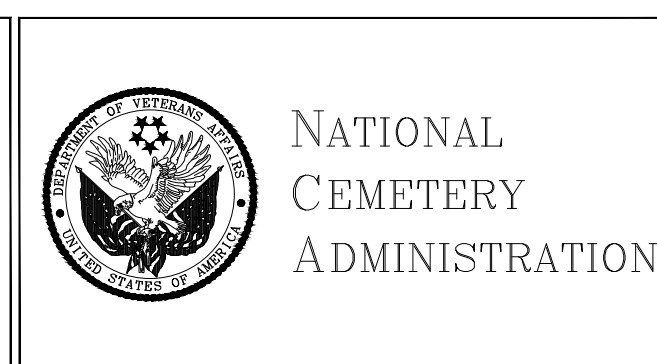
## INCISED STONE

SCALE: 1"=1"



Revisions	Date	Revisors	Description	Date
F	01-23-17		INSERTED AE CONTRACTOR LOGO AND DETAILS. MOVE EMBLEM TABLE AND REVISION BLOCK INTO COVER PAGE.	
B	07-01-13		REARRANGED ALL EMBLEMS TO FIT FULL SCALE SHEET LAYOUT. REVISED GENERAL NOTES. ADDED INDEX CHARTS.	
A	03-01-07	I	MOVED INCISED STONE DETAIL FROM SHIT 1, REARRANGED EMBLEMS FROM SHEET 1 OF 3.	12-23-17
...	06-05-03	H	SUPERSEDES DRAWING ID-4 SHEET 2 OF 2 DATED 12-2-99. ADD NOTES TO GENERAL NOTES NUMBER 1. REPLACED NOTES TO GENERAL NOTES NUMBERS 2 AND 4. REVISED AE CONTRACTOR DETAILS.	12-08-17

**GENERAL NOTES:**  
 1. ALL EMBLEMS WHEN USED ON STONE NICHE COVERS SHALL BE 2" AT THEIR LARGEST POINT TO POINT MEASUREMENT AND ALL OTHER AREAS IN EQUAL PROPORTION. ALL EMBLEMS ON FLAT MARKERS AND UPRIGHT HEADSTONES SHALL BE 3" AT THEIR LARGEST POINT TO POINT MEASUREMENT AND ALL OTHER AREAS SHALL BE IN EQUAL PROPORTION.  
 2. INSCRIPTION DEPTHS ARE SHOWN IN THE TABLE AT THE UPPER LEFT CORNER OF DRAWING A-LFN&OC.  
 3. ALL EMBLEMS ARE TO BE INCISED AS INDICATED BY SOLID LINE OR SOLID AREA. CLEAR AREAS TO REMAIN AS FINISHED SURFACE.  
 4. THE CONTRACTOR MAY REDUCE THE EMBLEM'S DEPTH WHERE ELEMENTS OF THE DESIGN ARE SO DETAILED AS TO MAKE IT IMPRACTICAL TO ACHIEVE DEPTHS SHOWN IN THE TABLE OF DRAWING A-LFN&OC.



Drawing Title <b>EMBLEMS</b>		Project Title <b>GOVERNMENT HEADSTONES AND MARKERS</b>		AE Contractor <b>PLANATE MANAGEMENT GROUP</b> 3631 Ransom Place, Alexandria, VA 22306		Date <b>DECEMBER 23, 2017</b>	
Approved: Director, Memorial Programs Service Signed: _____		Marker Type ALL	Checked KEEKS	Drawn MLT	Project No.		
Approved: Chief of Operations, Memorial Programs Service Signed: _____		Location	Checked IRN	Approved CSJ	DRAWING NO. <b>A-EM-1</b>		
Digital File A-EM-1.DWG 24" x 36" SHEET		Drawn JP/JN/IRN		Checked IRN		Approved CSJ	
						Sheet 1 of 5	