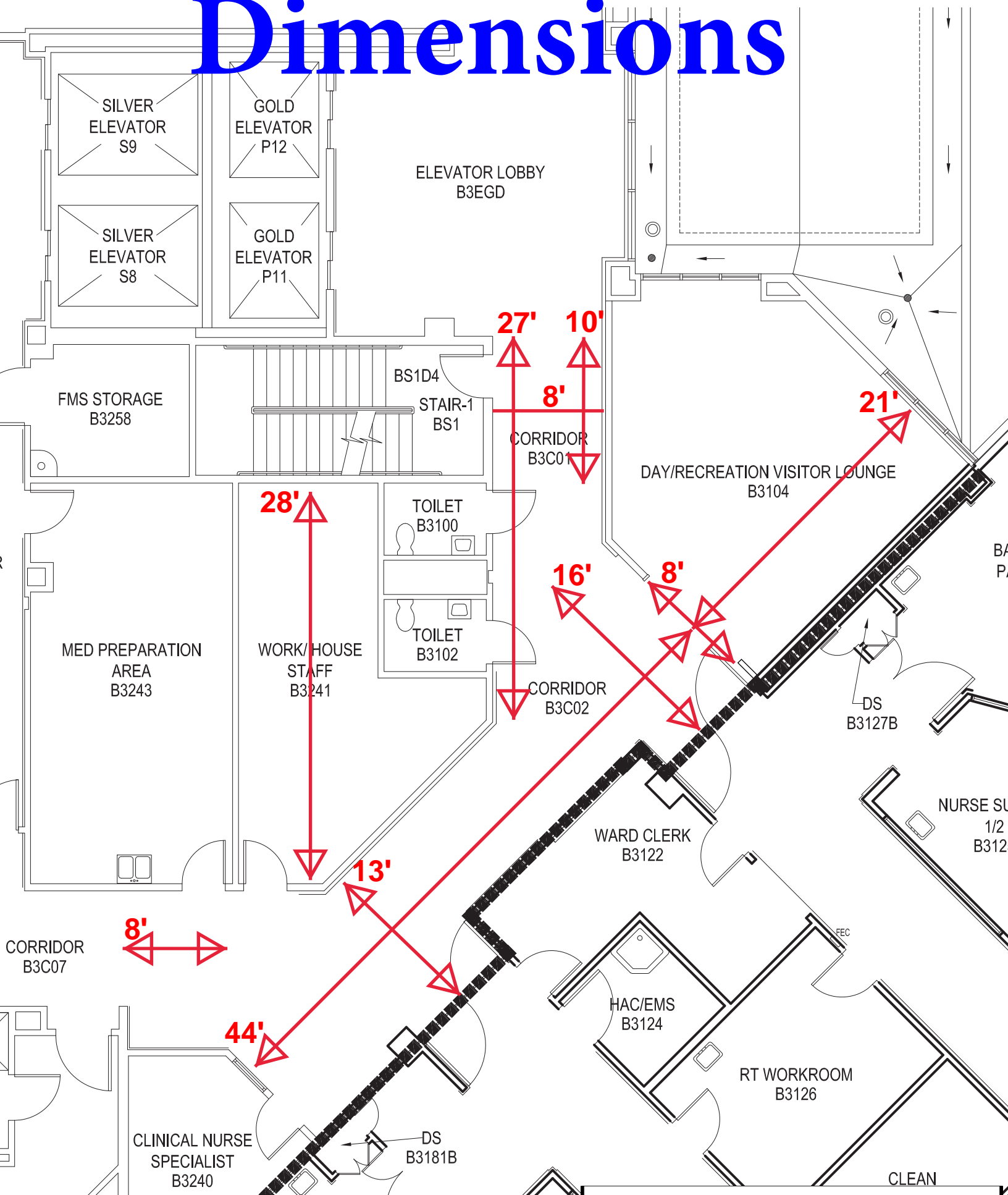
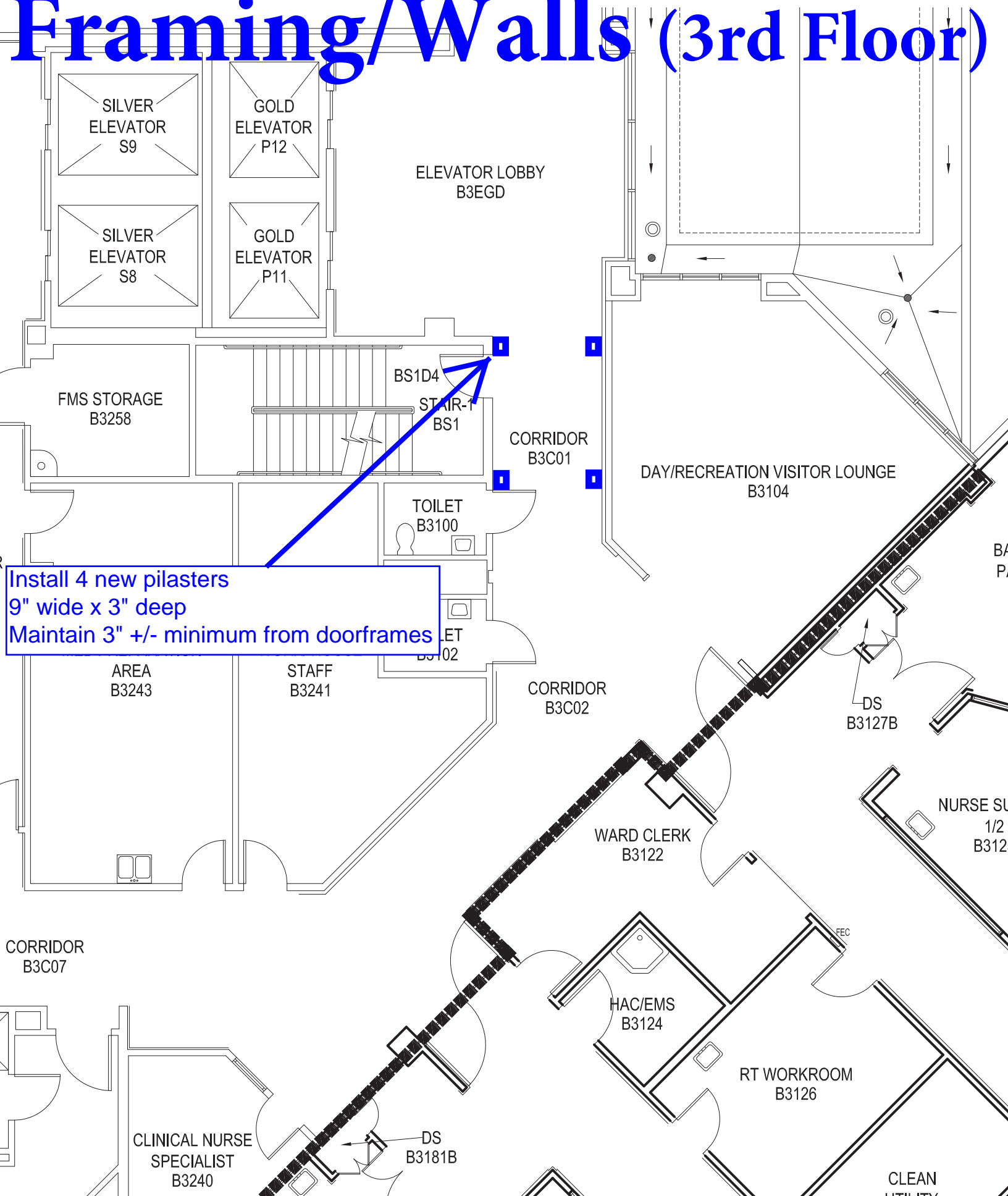


Dimensions

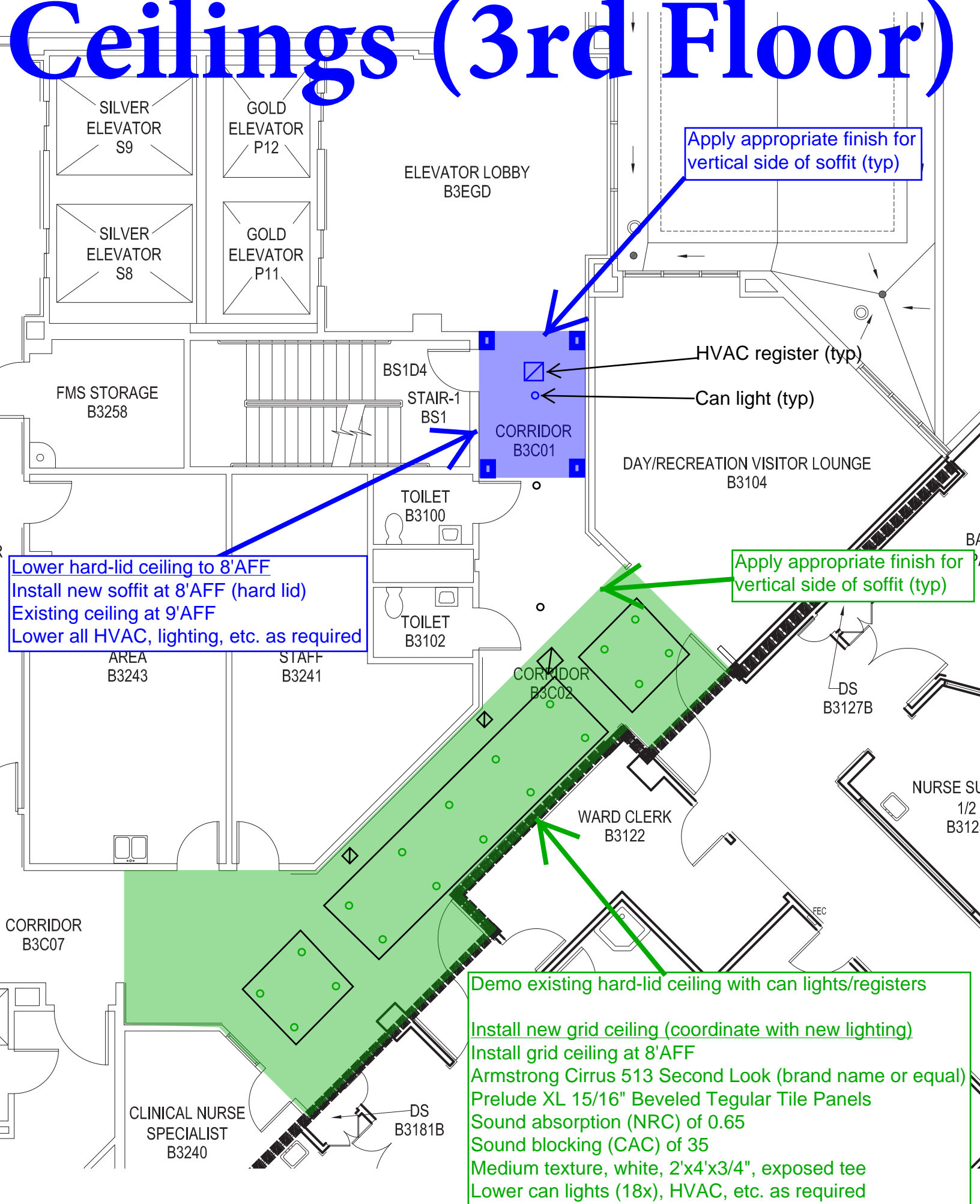


Last Updated: 7/23/2018

Framing/Walls (3rd Floor)

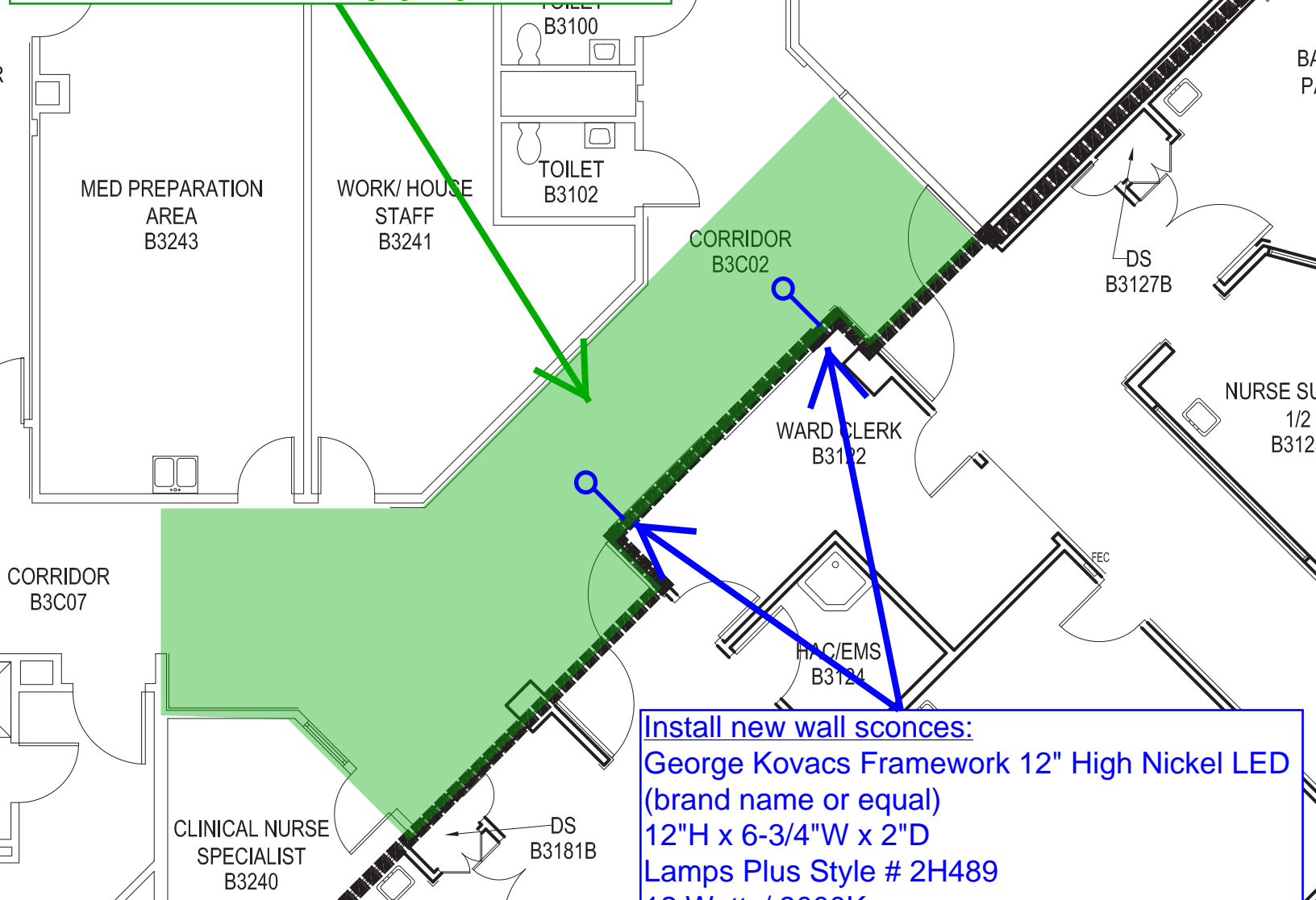


Ceilings (3rd Floor)



Lighting (3rd Floor)

Install new lay-in lighting
Alcon Lighting 14000 Elite Architectural LED 1x4
(brand name or equal)
Recessed Center Basket Perforated Direct Light Troffer
36 Watts / 3000K warm white (LED)
Dust/Bug Proof Clear Acrylic Lens
1'x4' size
Connect to electrical for existing lighting



Install new wall sconces:
George Kovacs Framework 12" High Nickel LED
(brand name or equal)
12"H x 6-3/4"W x 2"D
Lamps Plus Style # 2H489
12 Watts/ 3000K
No dimmer

Flooring (3rd Floor)

Carpet (Modular 24"x24"):
Mannington Linen Weave
(brand name or equal)
Color: Sable 42554
Installation: Vertical Ashlar

6" Coved Base:
Johnsonite Mandalay Base
(brand name or equal)
Color: Burnt Umber - 63

ELEVATOR S8
ELEVATOR P11
FMS STORAGE B3258

ELEVATOR LOBBY
B3EGD

BS1D4

STAIR-1
BS1

CORRIDOR
B3C01

DAY/RECREATION VISITOR LOUNGE
B3104

TOILET
B3100

LVT plank
orientation

MED PREPARATION
AREA
B3243

WORK/ HOUSE
STAFF
B3241

TOILET
B3102

CORRIDOR
B3C02

WARD CLERK
B3122

Resilient Transitions (typ):
Johnsonite
(brand name or equal)
Color: Burnt Umber - 63

6" Coved Base:
Johnsonite Mandalay Base
(brand name or equal)
Color: Burnt Umber - 63

LVT flooring (9"x59" planks):
Mohawk Group
(brand name or equal)
Hot & Heavy Collection, Secoya Style
Color: Picton Park - 872
Install random cuts to stagger seams

CORRIDOR
B3C07

LVT plank
orientation

CLINICAL NURSE
SPECIALIST
B3240

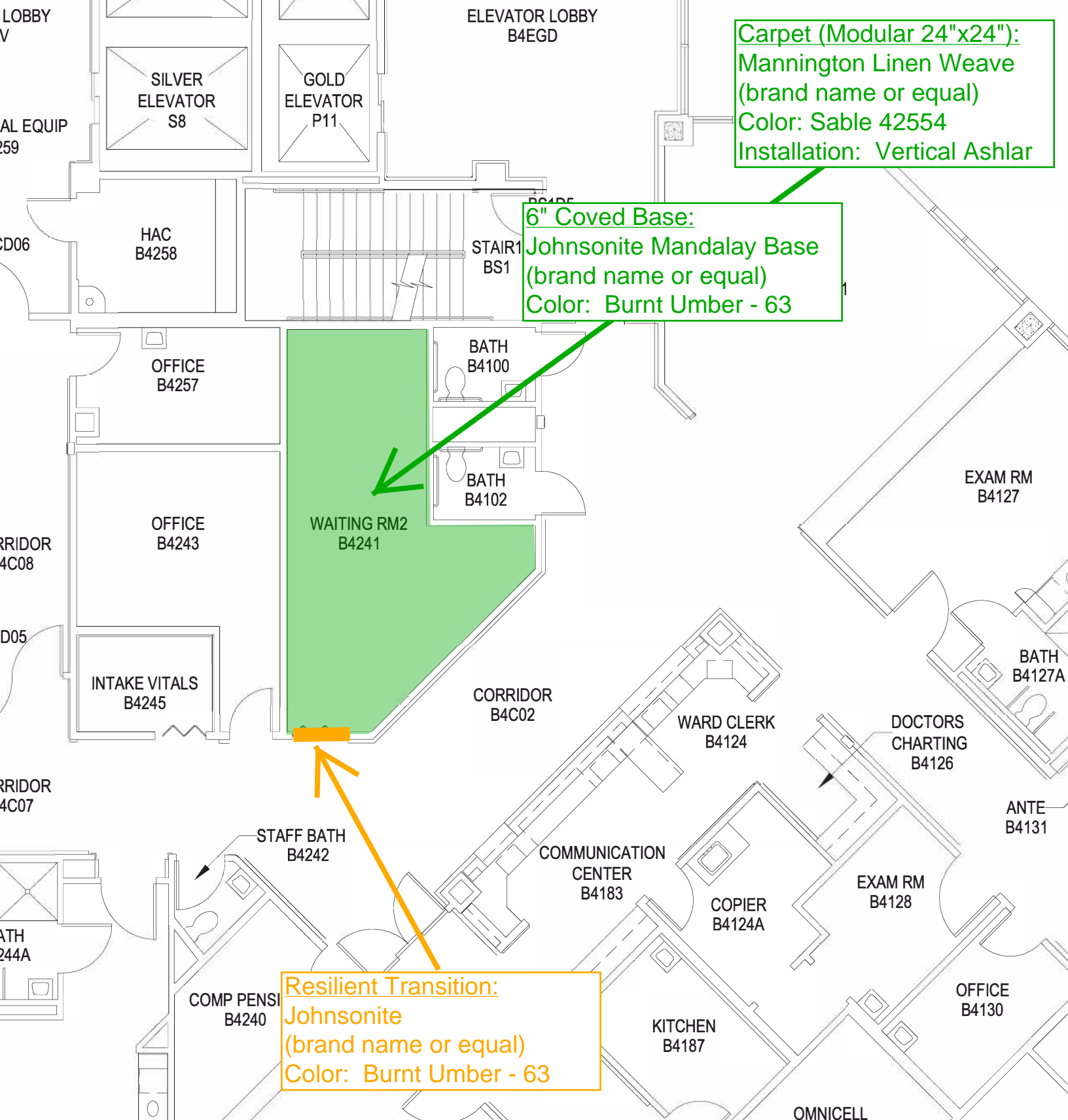
RT WORKROOM

DS
B3181B

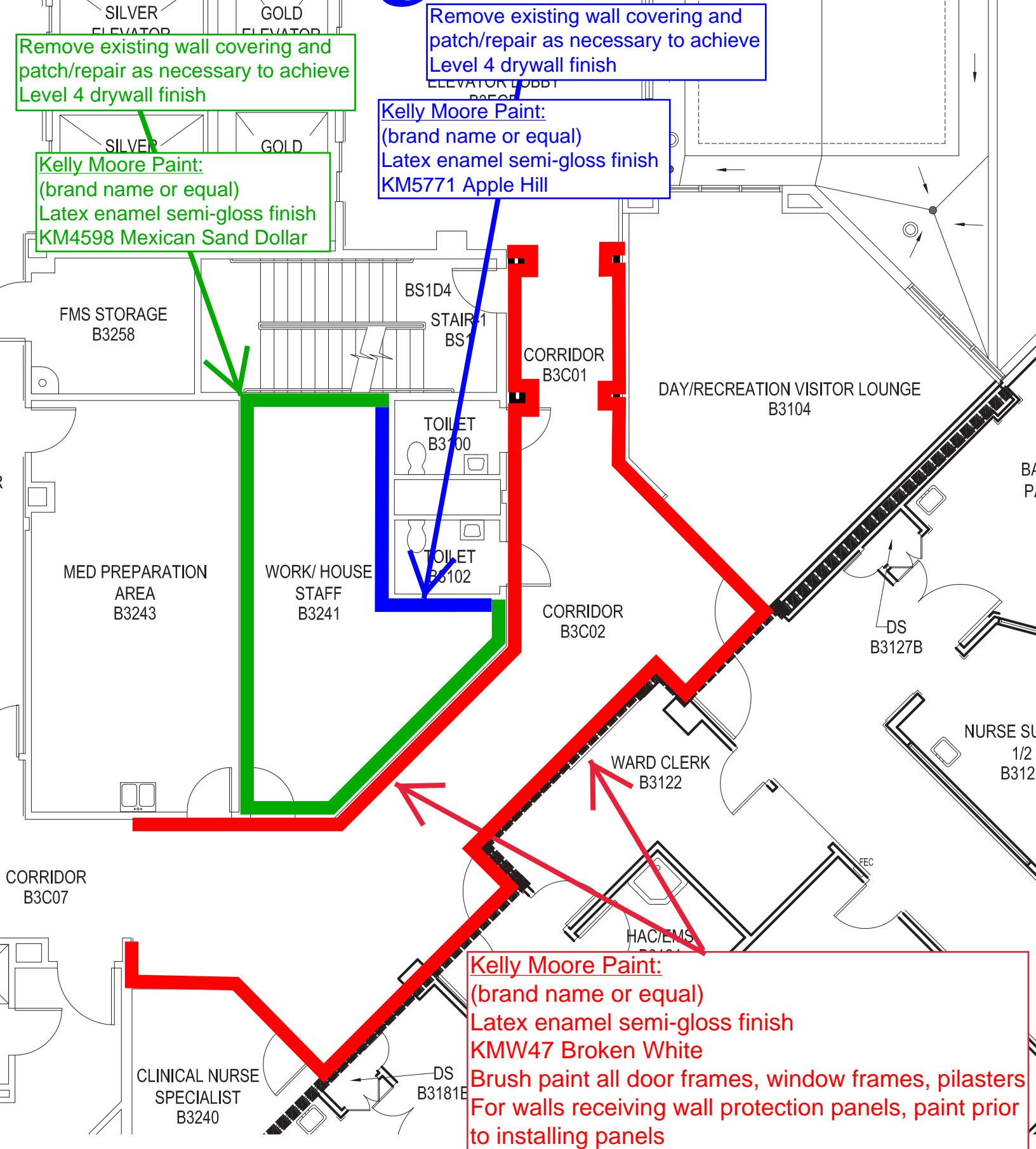
NURSE SU
1/2

DS
B3127B

Flooring (4th Floor)



Painting (3rd Floor)



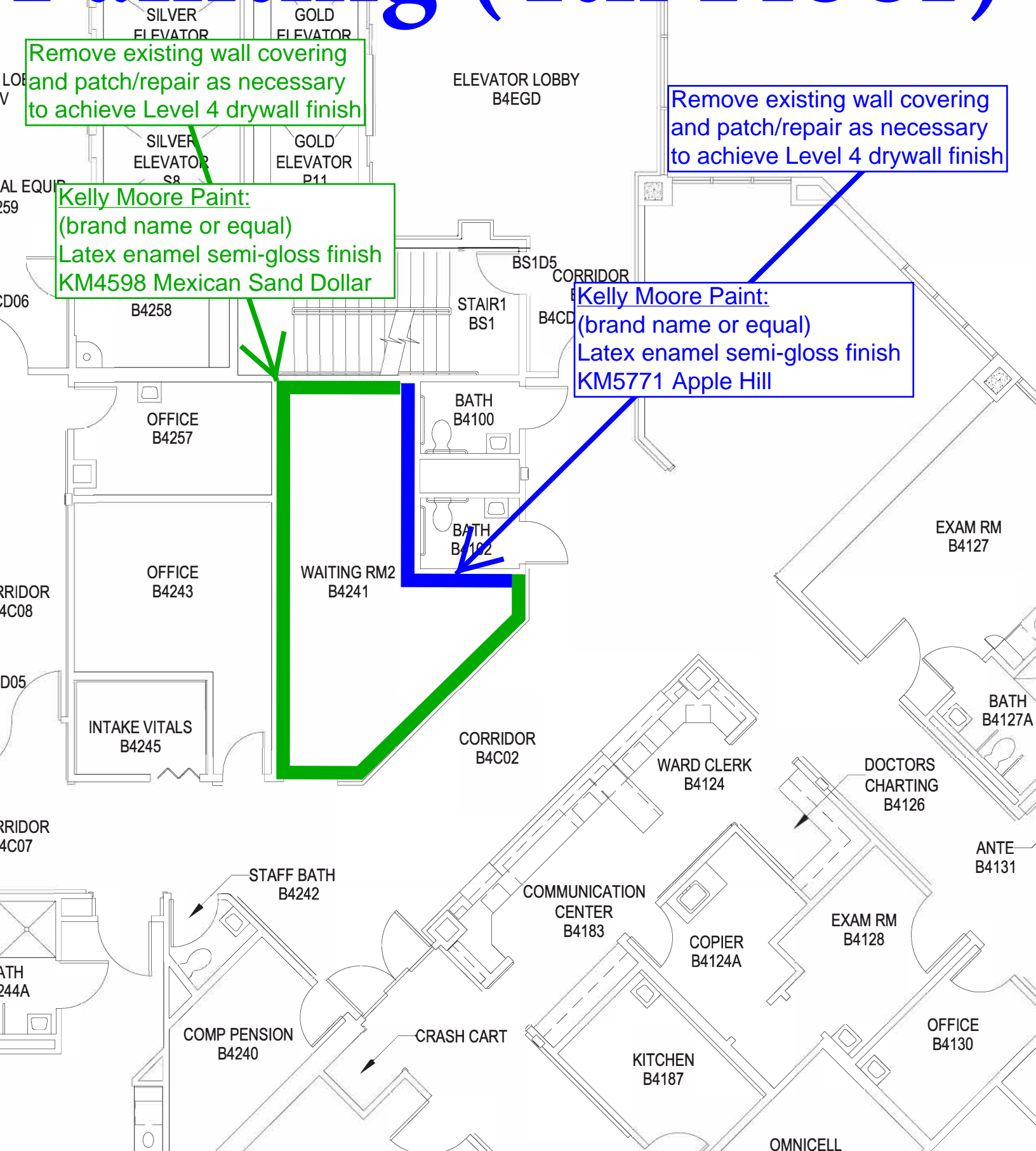
Painting (4th Floor)

Remove existing wall covering
and patch/repair as necessary
to achieve Level 4 drywall finish

Remove existing wall covering
and patch/repair as necessary
to achieve Level 4 drywall finish

Kelly Moore Paint:
(brand name or equal)
Latex enamel semi-gloss finish
KM4598 Mexican Sand Dollar

Kelly Moore Paint:
(brand name or equal)
Latex enamel semi-gloss finish
KM5771 Apple Hill



Wall Protection (3rd Floor)

Wall Panels:

Acrovyn thin frame 3/8" glued wrapped square panel
(brand name or equal)
Muslin (pattern), Shea (color): install from base to handrail
Foliage (pattern), Stonington (color): install from handrail to ceiling
Paint walls prior to installation of panels
Include Acrovyn wainscot trim (to match by color)

Stainless Steel Handrails:

Inpro 900SSO Stainless Steel Handrail, Oval
(brand name or equal)
Type 304 stainless steel, #4 satin finish
3" projection, 1.5" diameter for ADA, non-porous
Top of handrails installed at 36" AFF

Stainless Steel Crash Rails:

Inpro 50SS Stainless Steel Wall Guard, 4" height
(brand name or equal)
Type 304 stainless steel, #4 satin finish
3-5/16" projection, 1/4" thick
Top of crash rails installed at 12" AFF

Stainless Steel Corner Guards:

Inpro Surface Mount Stainless Steel Corner Guard
(brand name or equal)
"Cement-on" attachment method
14 gauge, 3-1/2" wing, 4' height,
Type 304 stainless steel; #4 satin finish
Installed at each outside corner section (some corners are
non-90 degree corners)
Installed starting above base

