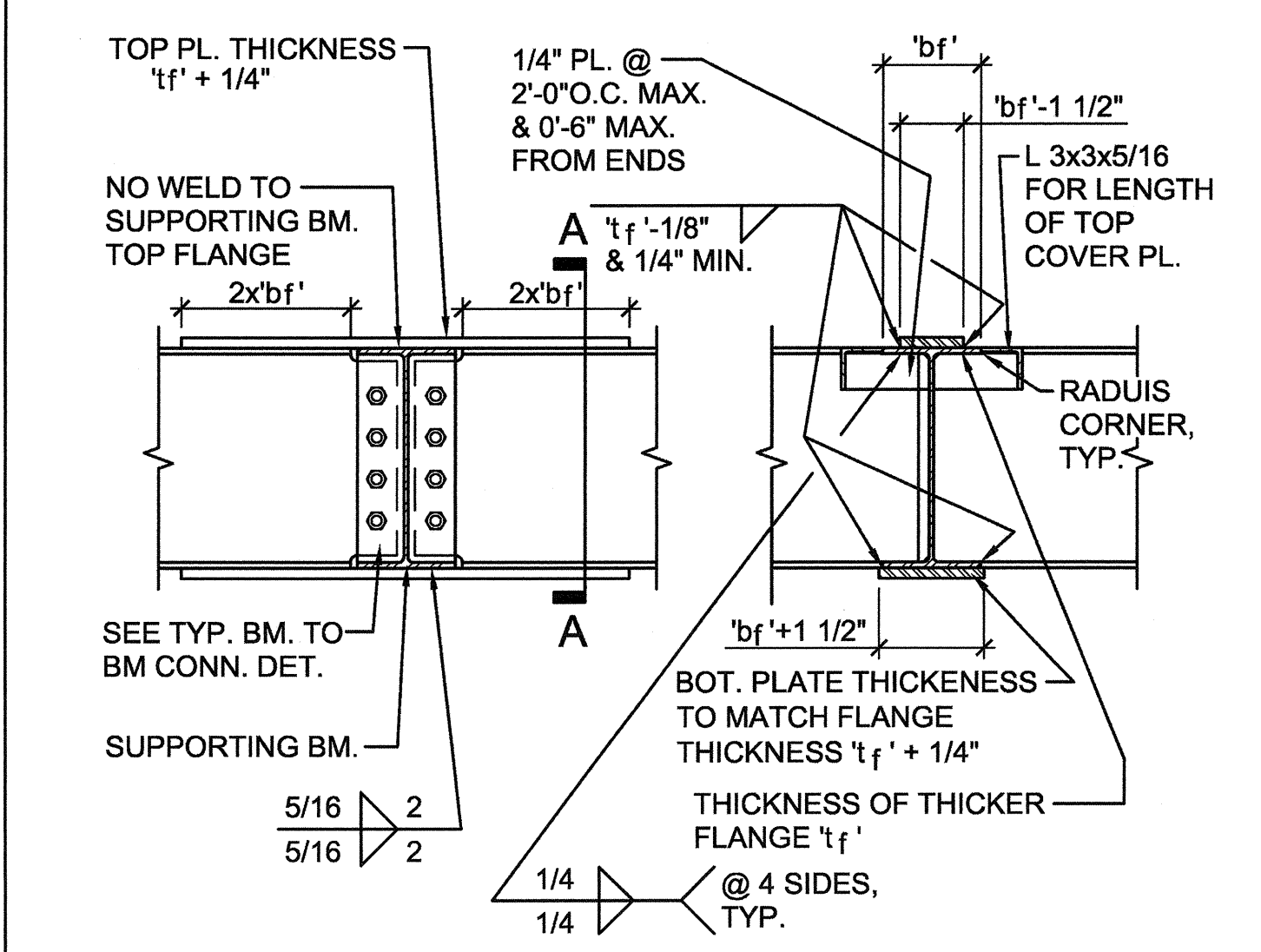
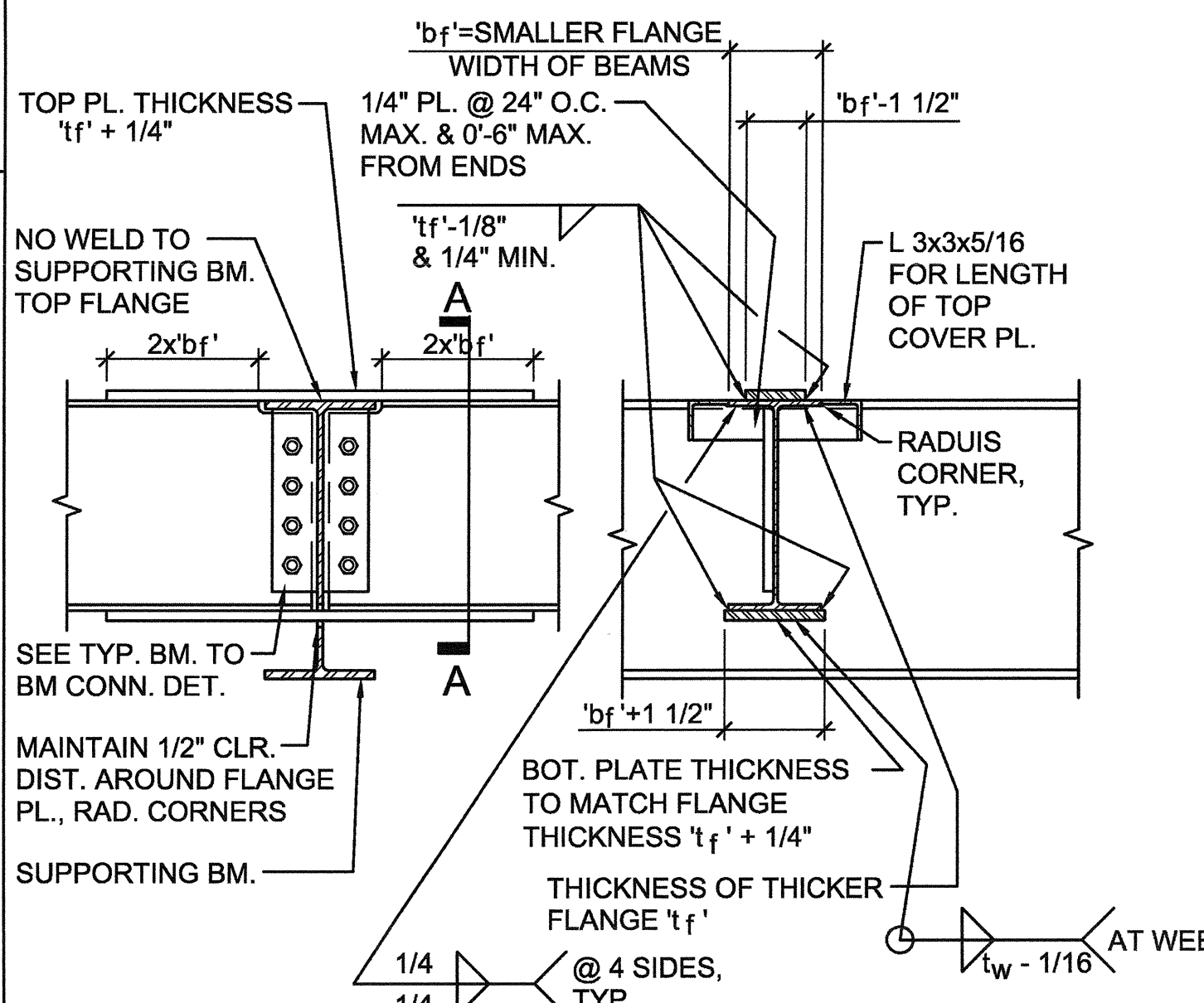


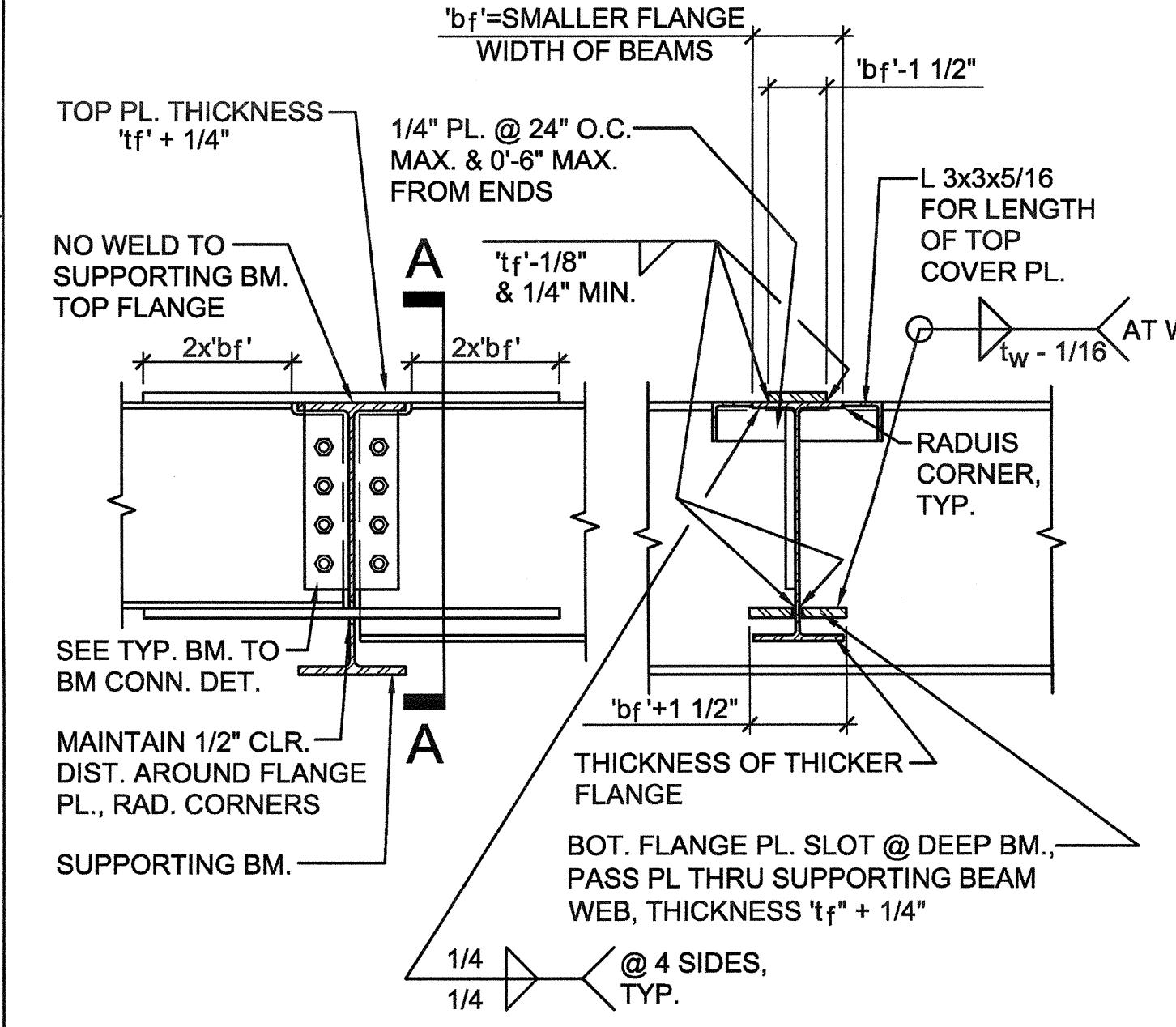
three inches = one foot
one and one half inches = one foot
one inch = one foot
three quarters inch = one foot
one half inch = one foot
three eighths inch = one foot
one quarter inch = one foot
one eighth inch = one foot



ELEVATION SECTION A-A
A BEAM WITH SAME DEPTH



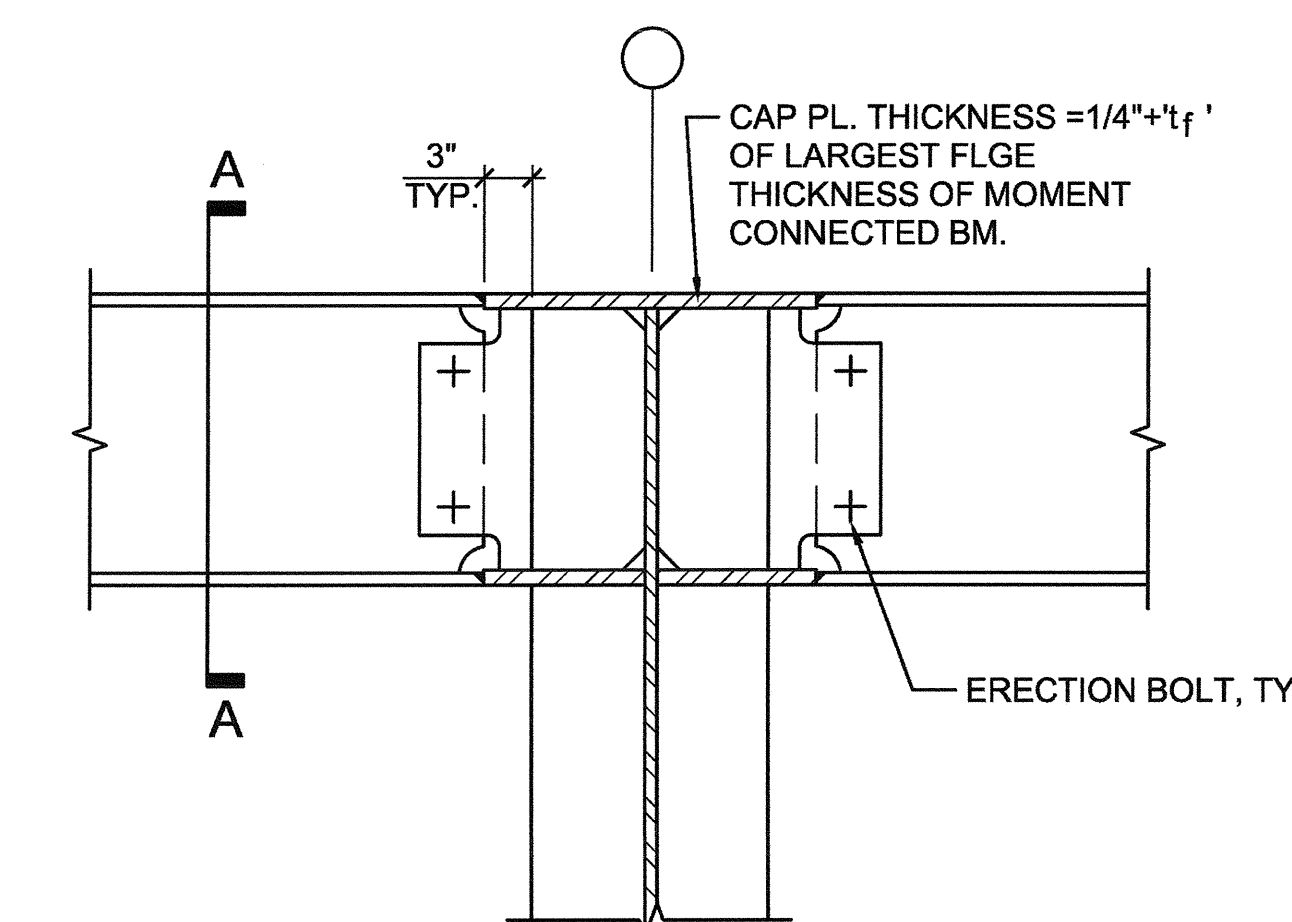
ELEVATION SECTION A-A
B BEAM WITH VARYING DEPTH



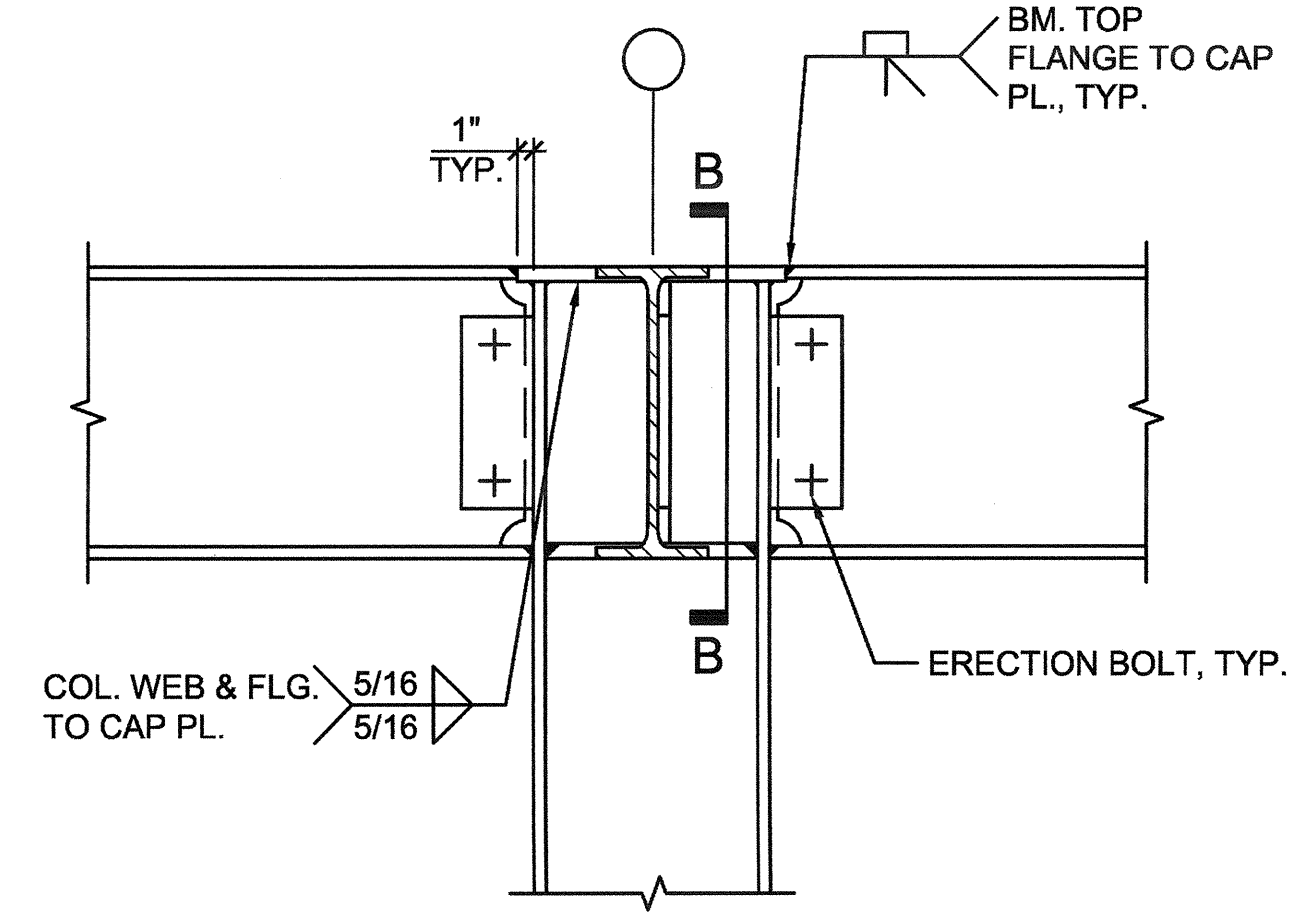
ELEVATION SECTION A-A
C STEPPED BEAMS

- NOTES:
1. FLANGE PL. TO BE ASTM A572, GR. 50.
 2. NO ERECTION BOLTS ALLOWED IN FLANGE PLATES.
 3. NOTED ON PLAN.

9 BM. TO BM. MOMENT CONN.
N.T.S.



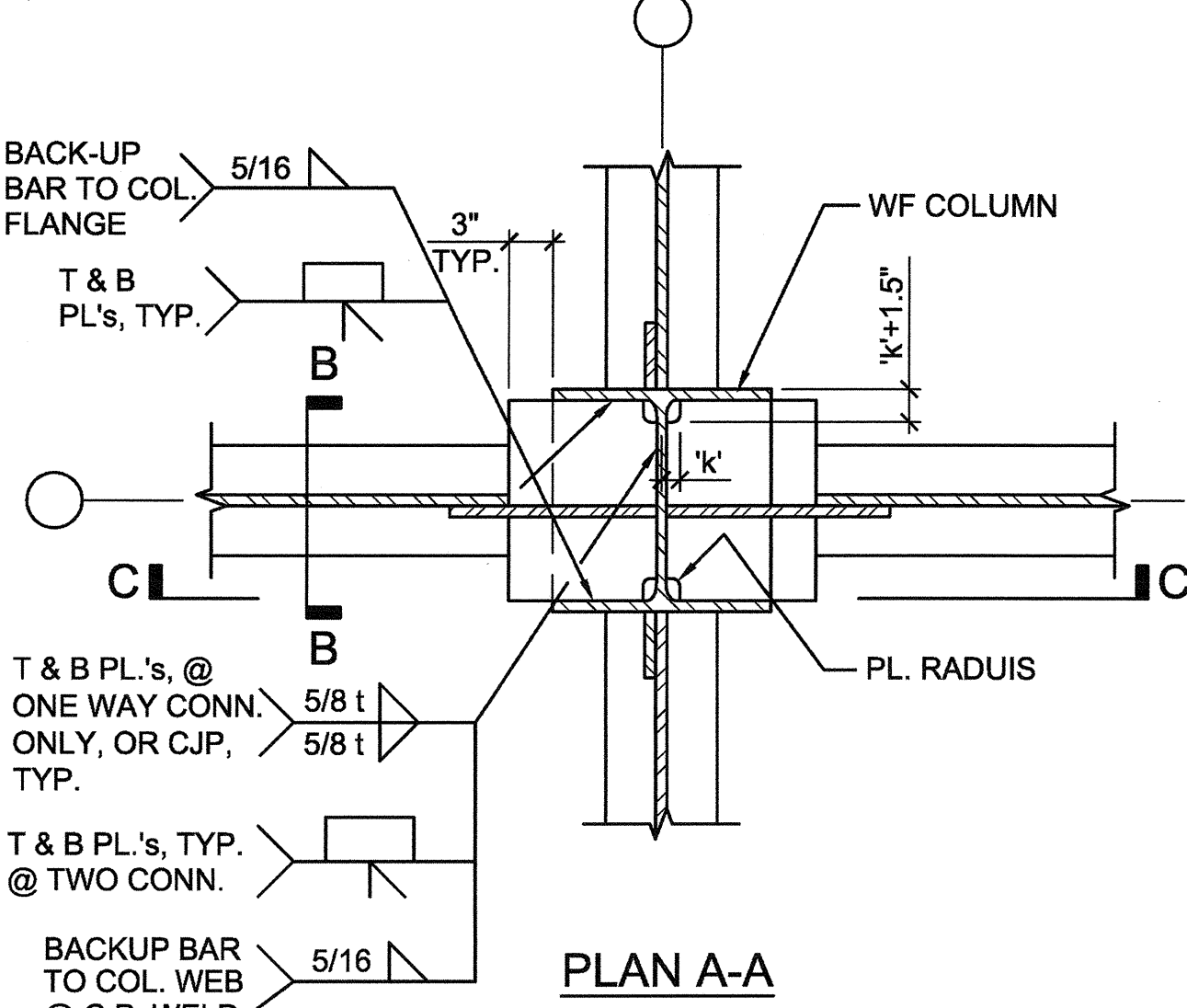
SECTION B-B



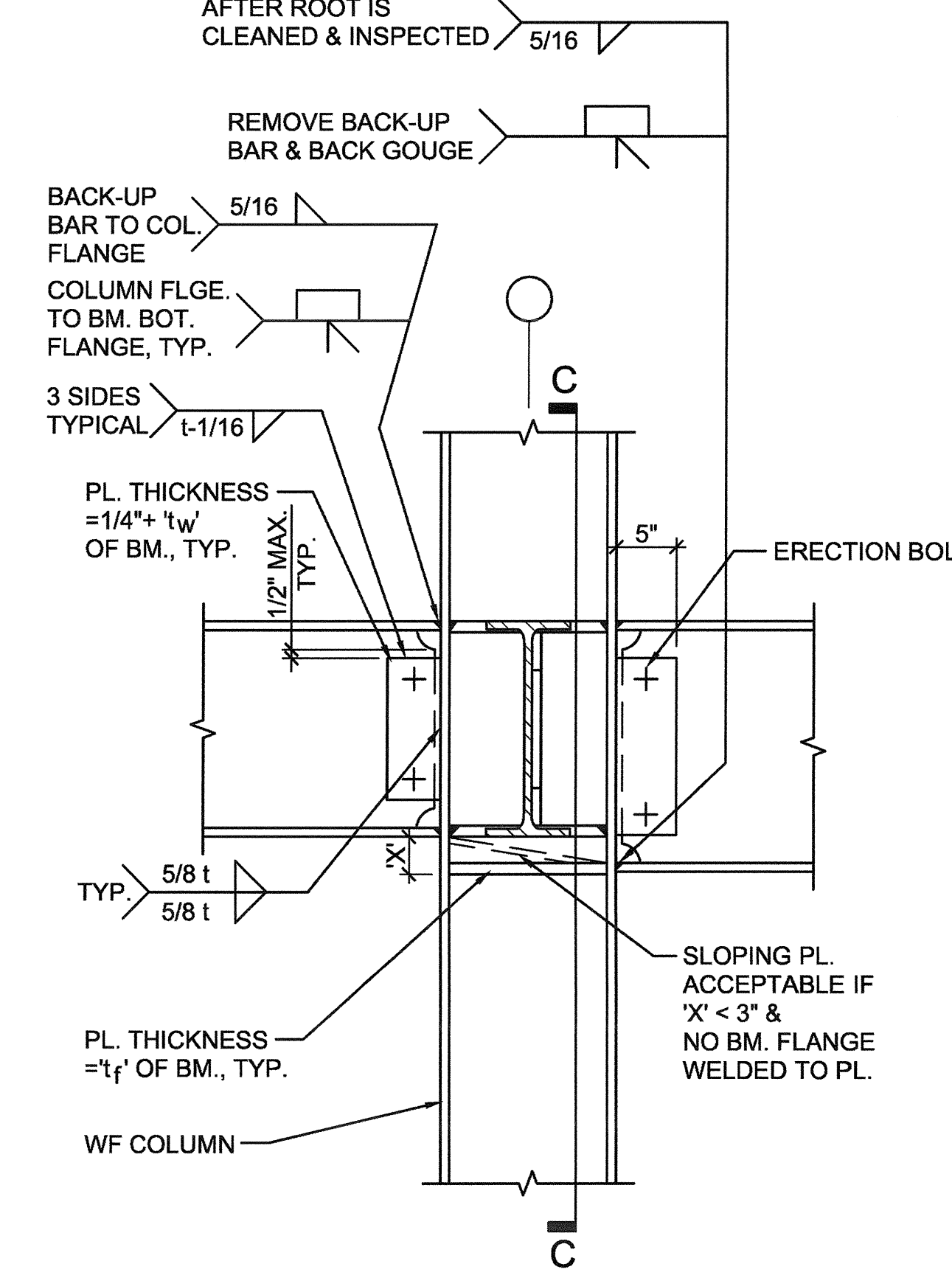
SECTION A-A

- NOTES:
1. SEE BEAM TO COLUMN MOMENT CONNECTION FOR INFORMATION NOT SHOWN.
 2. AESS AS REQUIRED PER GENERAL NOTES.

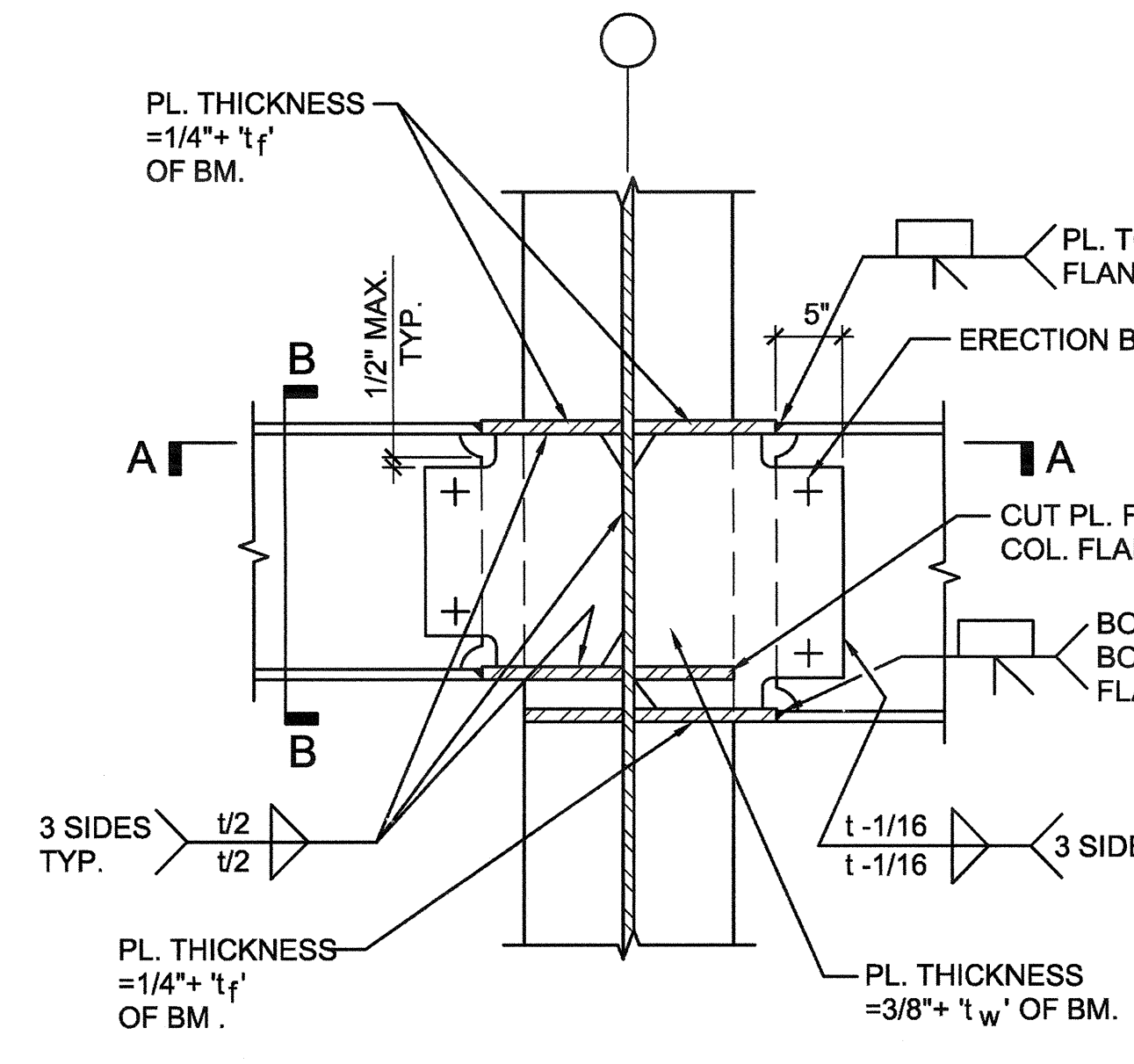
6 BEAM TO COLUMN MOMENT CONNECTION AT ROOF
N.T.S.



PLAN A-A



ELEVATION B-B

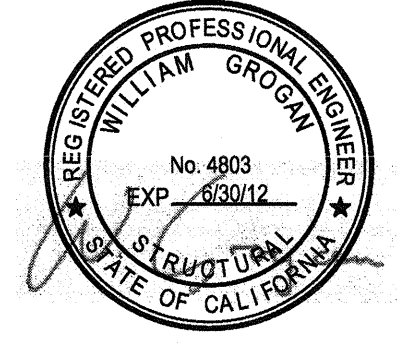


SECTION C-C

- NOTES:
1. NOTED ON PLAN H OR I
 2. AESS AS REQUIRED PER GENERAL NOTES.

3 TYP. BEAM-TO-COLUMN MOMENT CONNECTION
N.T.S.

CONSULTANTS:
Degenkolb
DEGENKOLB ENGINEERS
235 Montgomery Street, Suite 500
San Francisco, CA 94104
415.392.6952 Phone
415.981.3157 Fax
www.degenkolb.com
80564020.00



ARCHITECT/ENGINEERS:
HMC Architects
1827 E. Fir Avenue, Studio 103 / Fresno, CA 93720
T 559 322 2444 / www.hmcarchitects.com



Drawing Title
TYPICAL STEEL DETAILS
Approved Project Director

Project Title
**BUILDING 24
SEISMIC CORRECTION
AND ADDITION**
Location
VAMC FRESNO, CA
Date
January 31, 2012
Checked
WG
Drawn
MAM/KM

Project Number
570-215
Building Number
24
Drawing Number
SS112
Dwg. 11 of 180

Office of
Construction
and Facilities
Management
Department of
Veterans Affairs