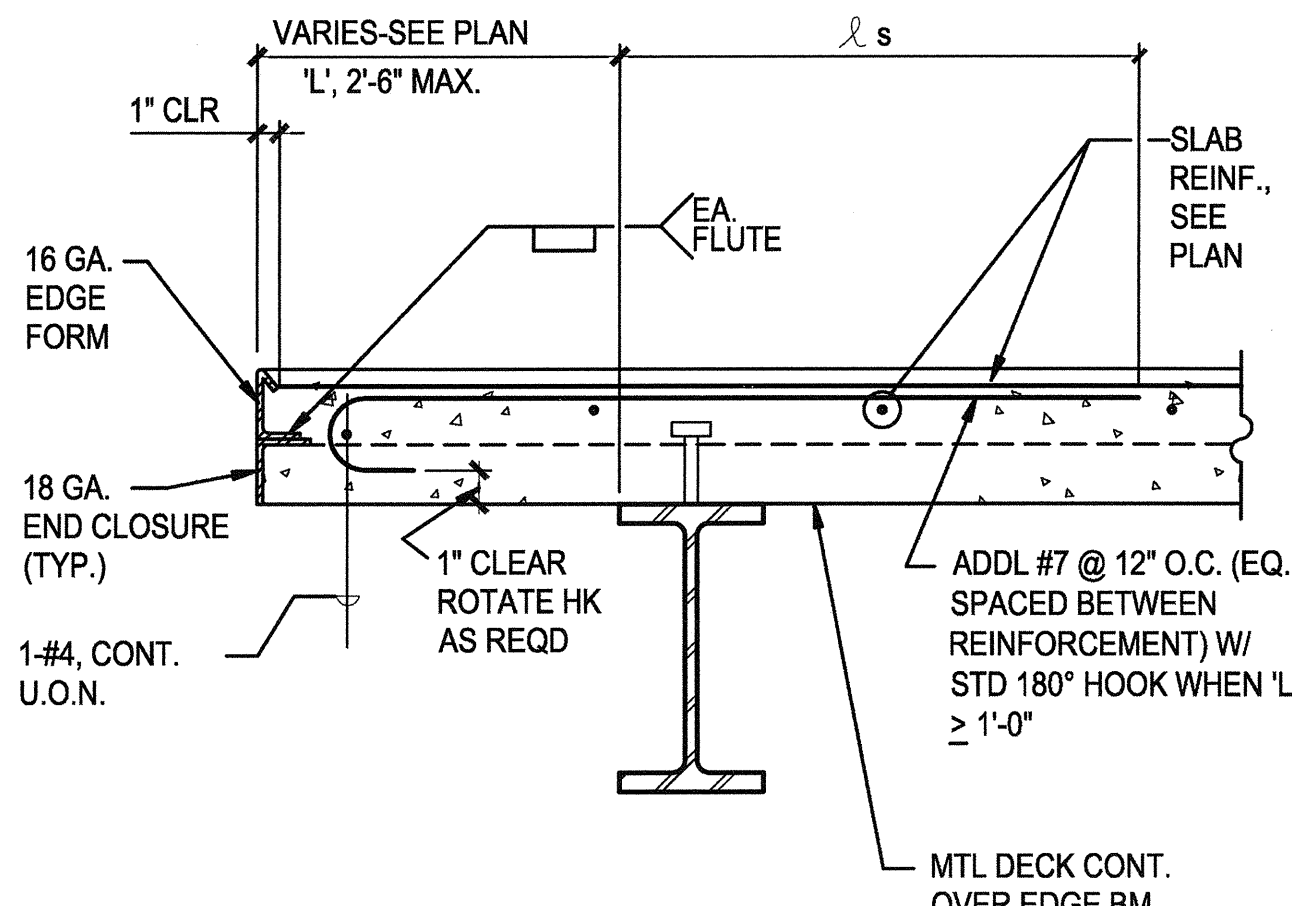


DECK DESIGNATION	EQUAL SECTION FOR REFERENCE (ROBERTSON DECK)		DEPTH (NOMINAL) [inch]	MOMENT OF INERTIA [inch ⁴]	SECTION MODULUS (S)		CONCRETE (SPECIFIED W=115psf) THICKNESS TO HIGH POINT OF DECK (inch)	MESH SIZE LOCATED 1" FROM TOP OF CONCRETE
	SECTION	GAUGE			+ MOMENT (inch ³)	- MOMENT (inch ³)		
A	21	22	3.0	0.67	0.39	0.47	-	-
B	21	20	3.0	0.85	0.50	0.58	3	6 x 6 - #10 / 10
C	21	18	3.0	1.26	0.76	0.79	3	6 x 6 - #10 / 10
D	3	22	1 1/2	0.18	0.20	0.22	3	6 x 6 - #10/10
E	2" QL - 99 - 20		2.0	0.419	St = 0.397 Sb = 0.427	St = 0.386 Sb = 0.363	3 1/2	6 x 6 - #9 / 9
F	2" QL - 99 - 18		2.0	0.558	St = 0.525 Sb = 0.567	St = 0.519 Sb = 0.531	4	6 x 6 - #9 / 8
G	2" QL - 99 - 16		2.0	0.419	St = 0.397 Sb = 0.427	St = 0.386 Sb = 0.363	3 1/2	6 x 6 - #9 / 9

NOTES:

- FOR DECKING E, F, G PROVIDE INDENTATION AND EMBOSSEMENT TO DEVELOP COMPOSITE ACTION WITH SLAB.
- VERIFY ALL DECK TYPES, DECK DEPTHS, CONCRETE THICKNESSES, AND MESH REINF. IN FIELD.

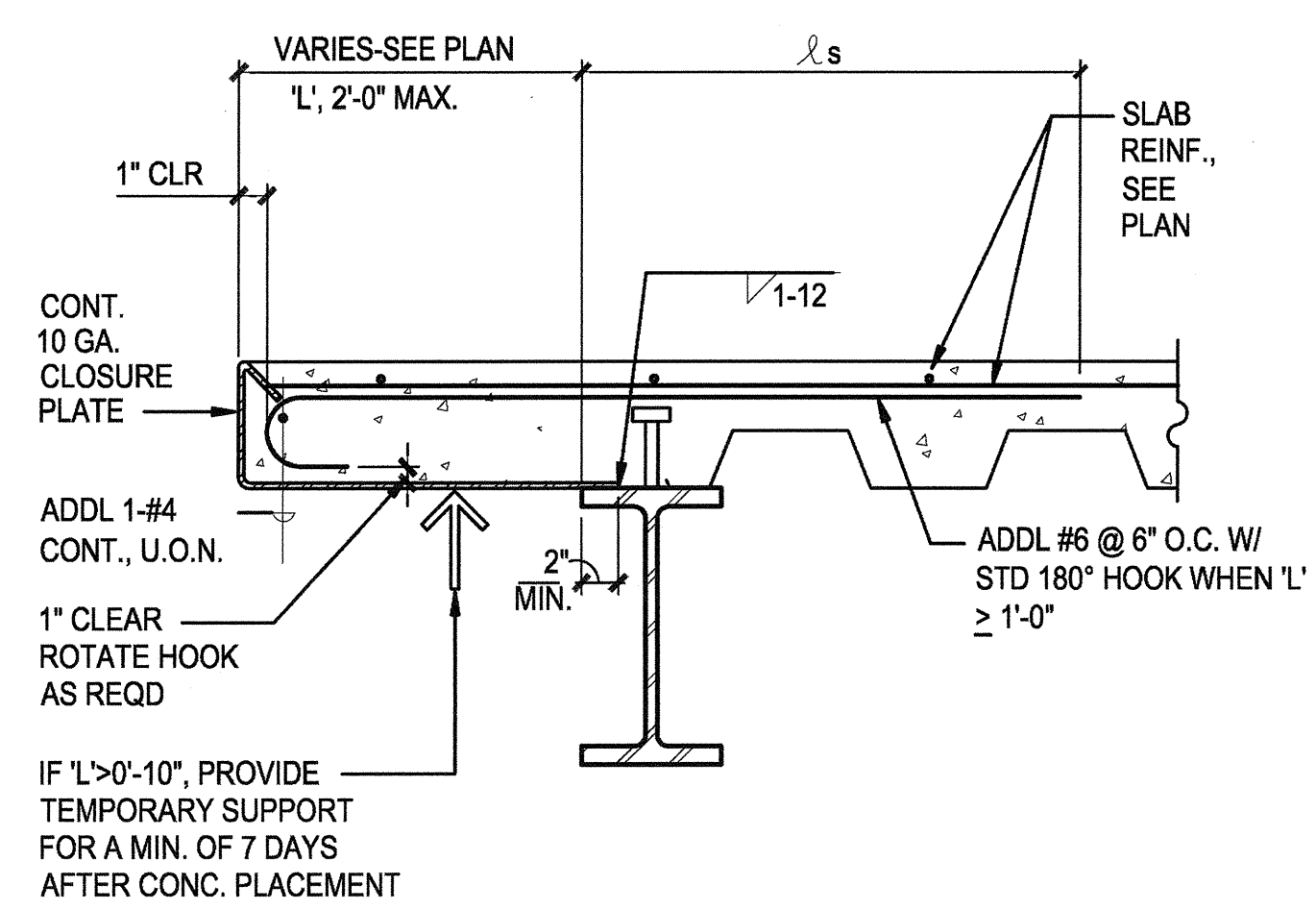
(E) STEEL DECKING SCHEDULE
PER ORIGINAL DRAWING NO.24-S-17)
N.T.S.



NOTES:

- SHORE CANTILEVER FOR 7-DAYS MINIMUM.
- SEE 2/-, TYPE C, FOR EDGE ANGLE DETAIL.

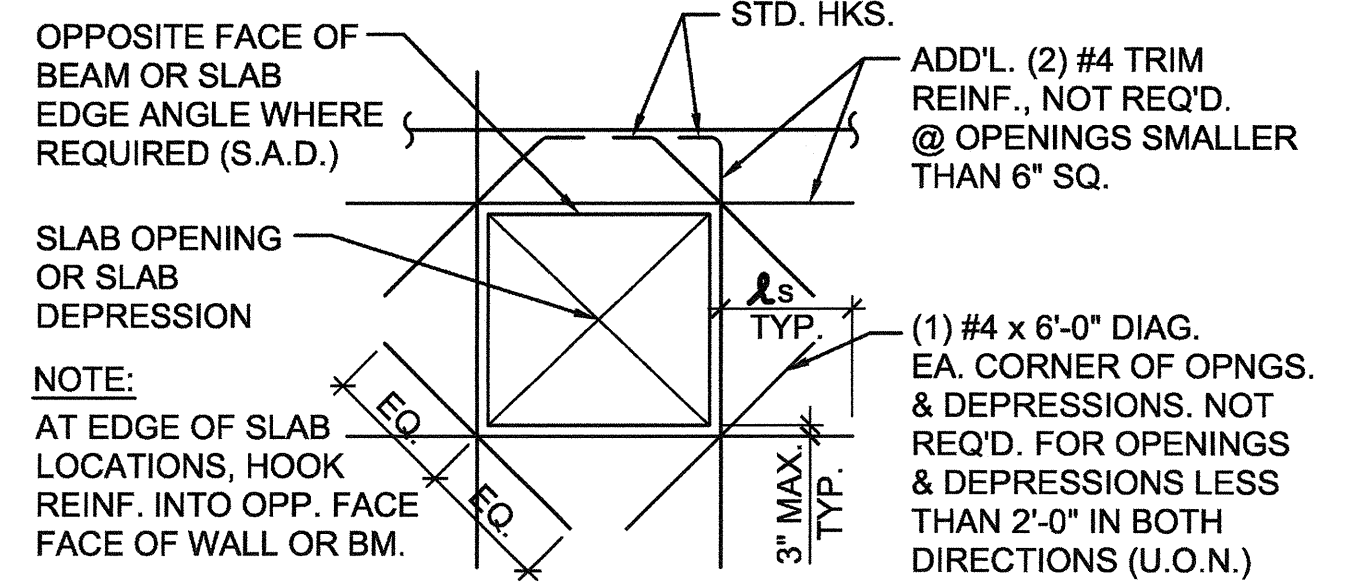
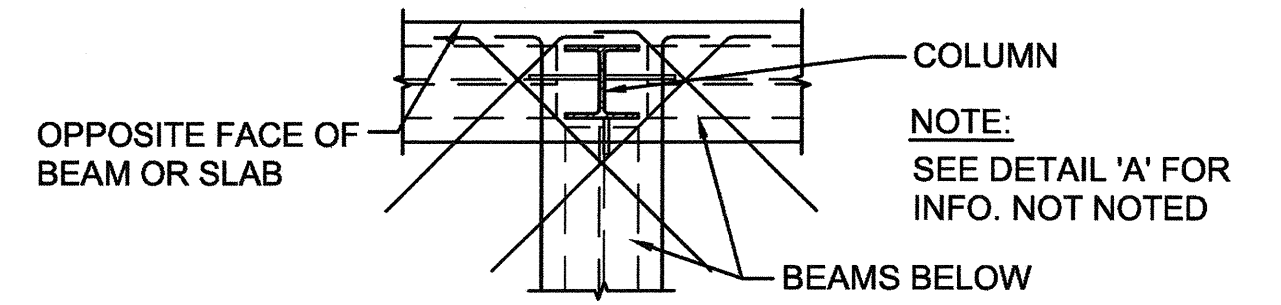
7 SLAB EDGE PERPENDICULAR TO DECK
N.T.S.



NOTES:

- SEE 2/-, TYPE B, FOR EDGE ANGLE DETAIL.

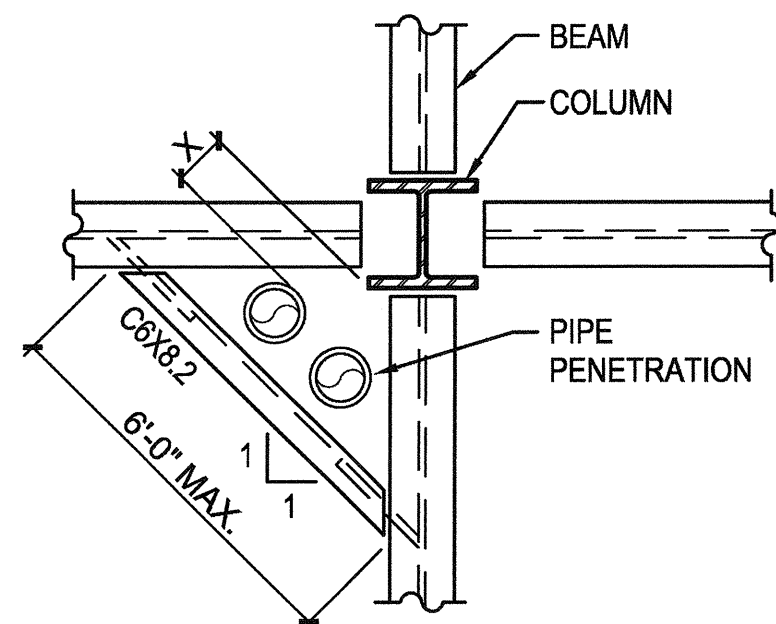
4 SLAB EDGE PARALLEL TO DECK
N.T.S.



NOTE:

WHERE BAR SIZE/ LENGTH SHOWN IN PLANS IS GREATER, USE THOSE VALUES

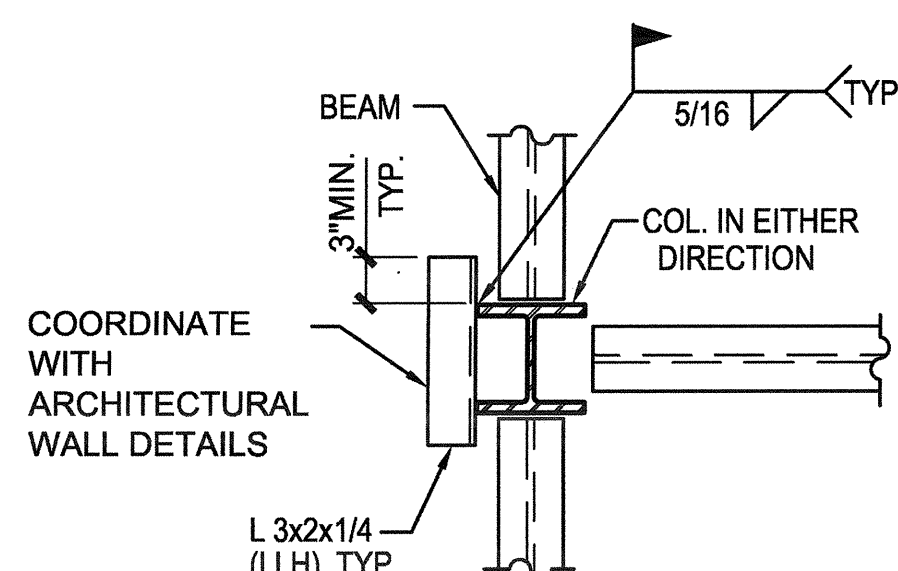
1 REINFORCING @ METAL DECK SLAB OPENINGS & DEPRESSIONS
N.T.S.



NOTES:

- ADD C8 AS SHOWN @ PIPE PENETRATION IF X<3'-0". IF X>3'-0" SEE TYP. OPNG DET. FOR REQD FRAMING.

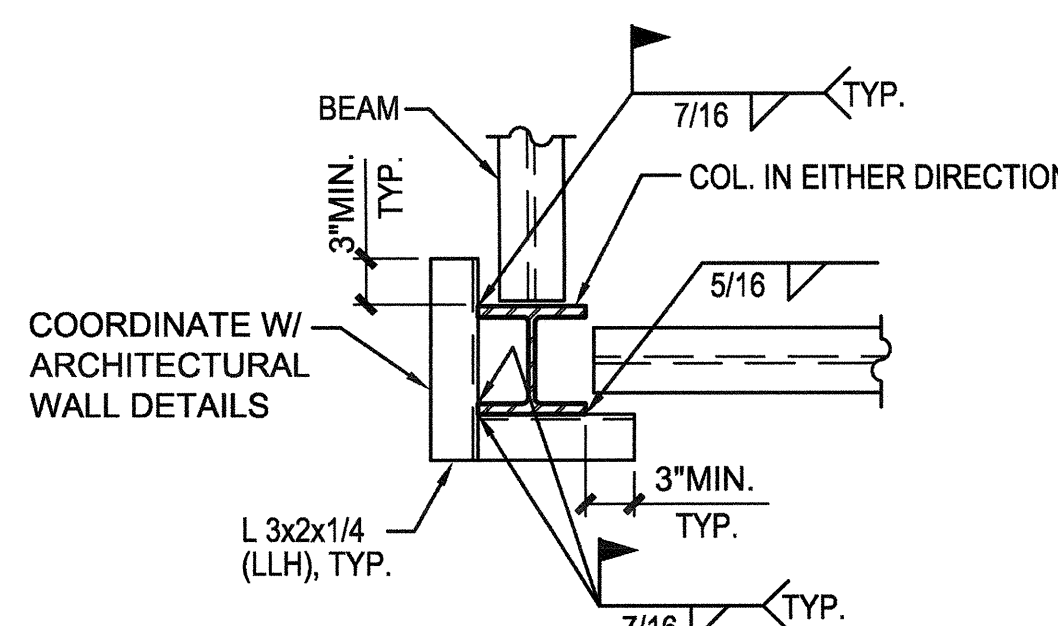
A TYPICAL



NOTES:

- PROVIDE DECK CLOSURES PER TYP. DETAIL.
- DETAILS SIMILAR AT PERIMETER COLUMNS & INTERIOR COLUMNS WITHOUT BEAMS FRAMING FOUR SIDES.

B PERIMETER COLUMN

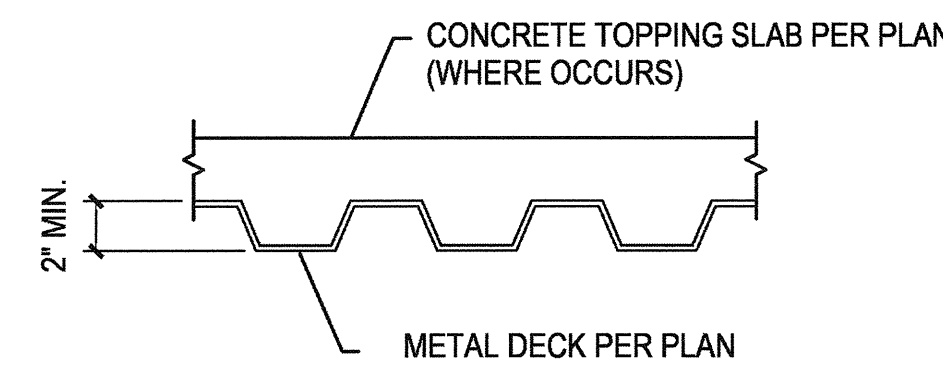


NOTES:

- PROVIDE DECK CLOSURES PER TYP. DETAIL.

C CORNER COLUMN

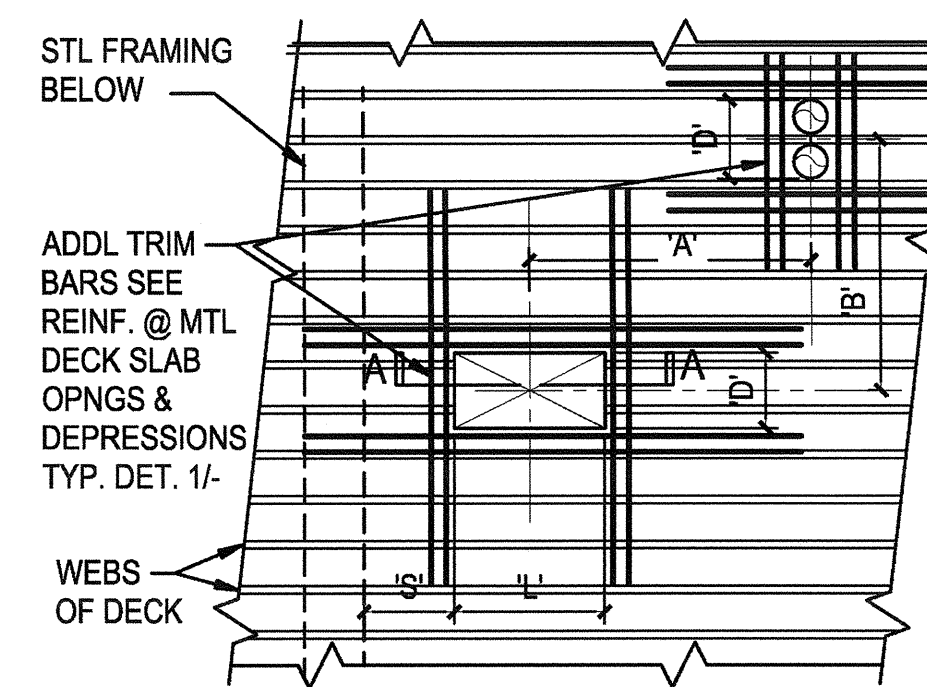
9 METAL DECK SUPPORT AT COLUMNS
N.T.S.



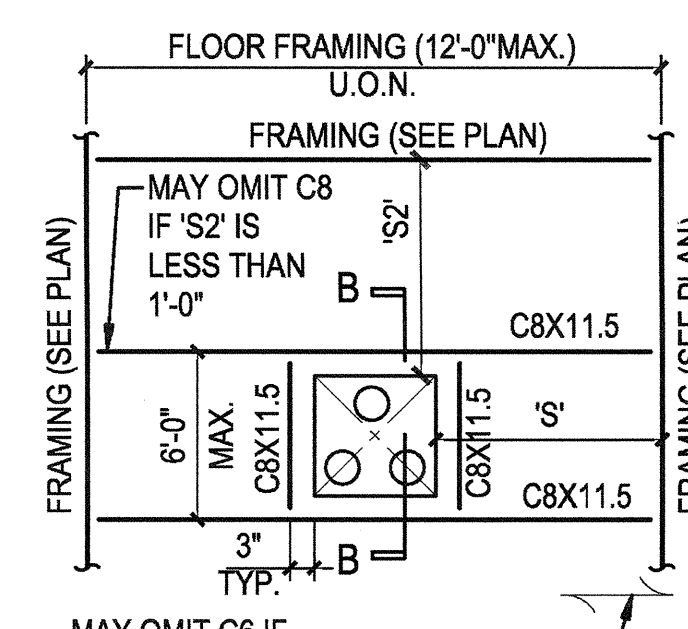
NOTES:

- AT W2 METAL DECK:
 - MIN. I = 0.565 IN⁴
 - MIN. +S = 0.510 IN³, MIN. -S = 0.511 IN³
- AT W3 METAL DECK:
 - MIN. I = 1.203 IN⁴
 - MIN. +S/-S = 0.767 IN³

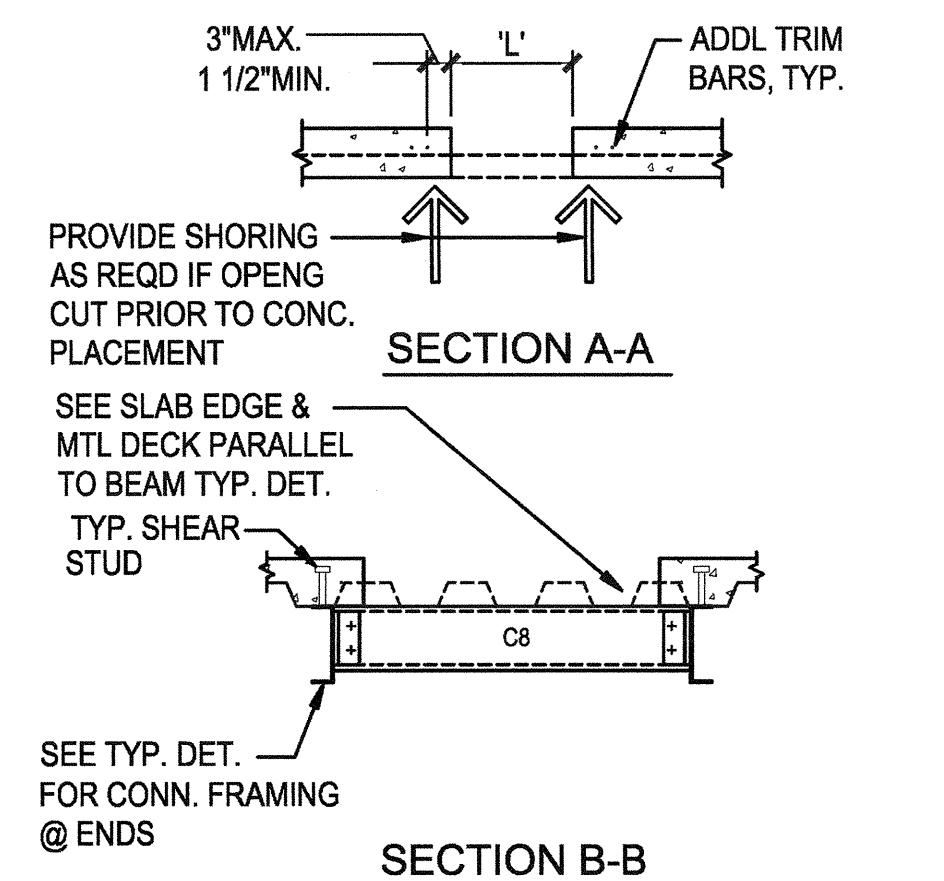
5 TYPICAL METAL DECK PROPERTIES (U.O.N. IN PLAN)
N.T.S.



A SMALL OPENINGS



B FRAMED OPENING



NOTES:

- DETAIL B APPLICABLE TO ALL OPENINGS.
- DETAIL A APPLICABLE ONLY TO OPENINGS SATISFYING ALL OF THE FOLLOWING:
 - D' ≤ 16" (DIM. PERPENDICULAR TO DECK SPAN)
 - L' ≤ 2'-0" (DIM. PARALLEL TO DECK SPAN)
 - 'A' OR 'B' GREATER THAN 4D & 32", WHERE D IS MAX. OF ADJACENT OPENINGS (DIMENSIONS TO ADJACENT OPENINGS).
- HOLES UP TO 6" MAX. IN BOTH DIRECTIONS MAY OMIT TRIM REINF.
- SEE ALSO 1/- FOR SLAB REINF. AROUND OPENING

6 COMPOSITE DECK OPENING REINFORCING (U.O.N.)
N.T.S.

CONSULTANTS:



ARCHITECT/ENGINEERS:



Drawing Title
CONCRETE/ METAL DECK DETAILS

Approved Project Director

Project Title
BUILDING 24
SEISMIC CORRECTION
AND ADDITION

Location
YAMC FRESNO, CA

Date
January 31, 2012

Checked
WG

Drawn
MAM/KM

Project Number
570-215

Building Number
24

Drawing Number

SS121
Dwg. 12 of 180

Office of Construction and Facilities Management

