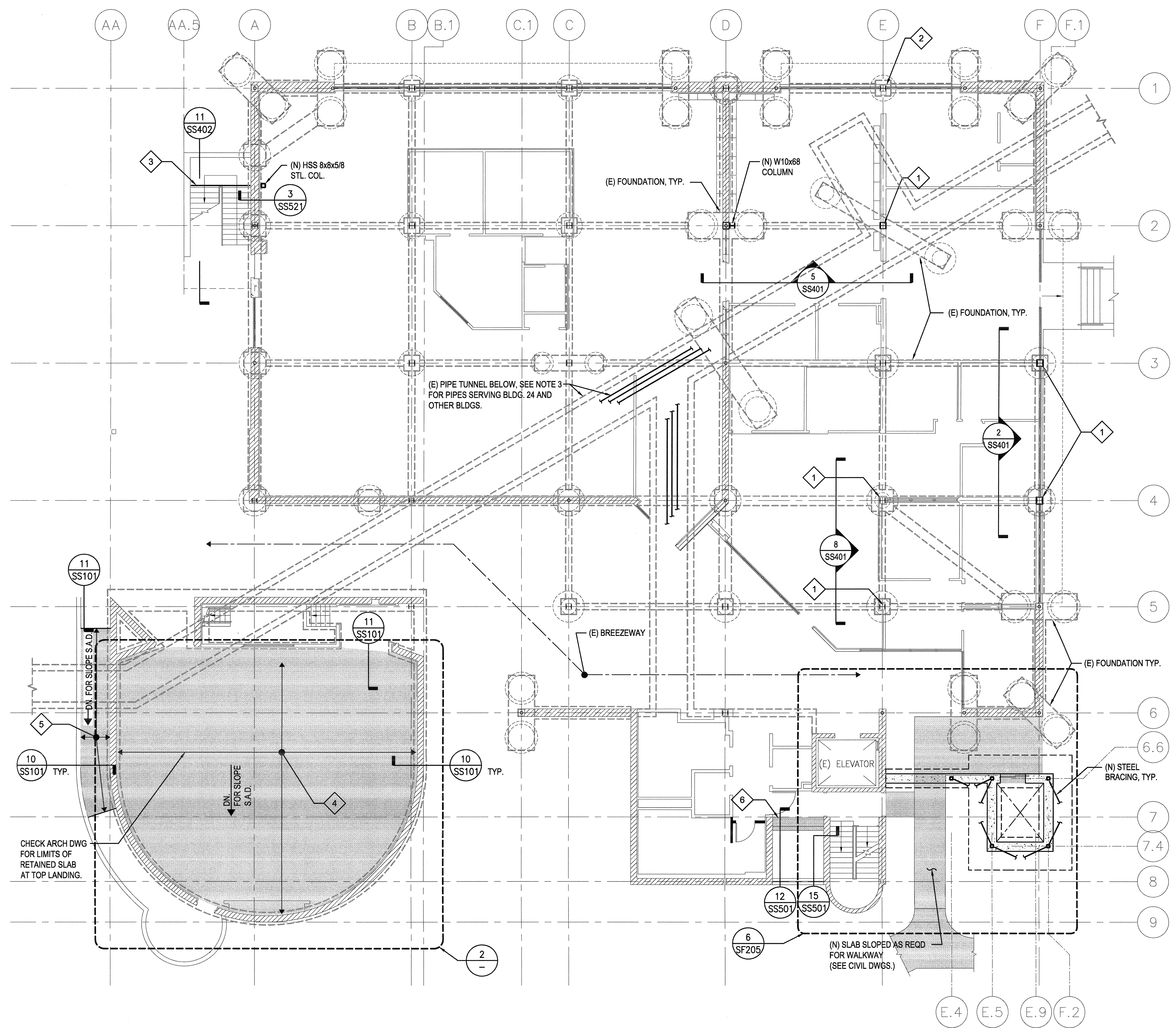


three inches = one foot
one and one half inches = one foot
one inch = one foot
three quarters inch = one foot
one half inch = one foot
three eighths inch = one foot
one quarter inch = one foot
one eighth inch = one foot



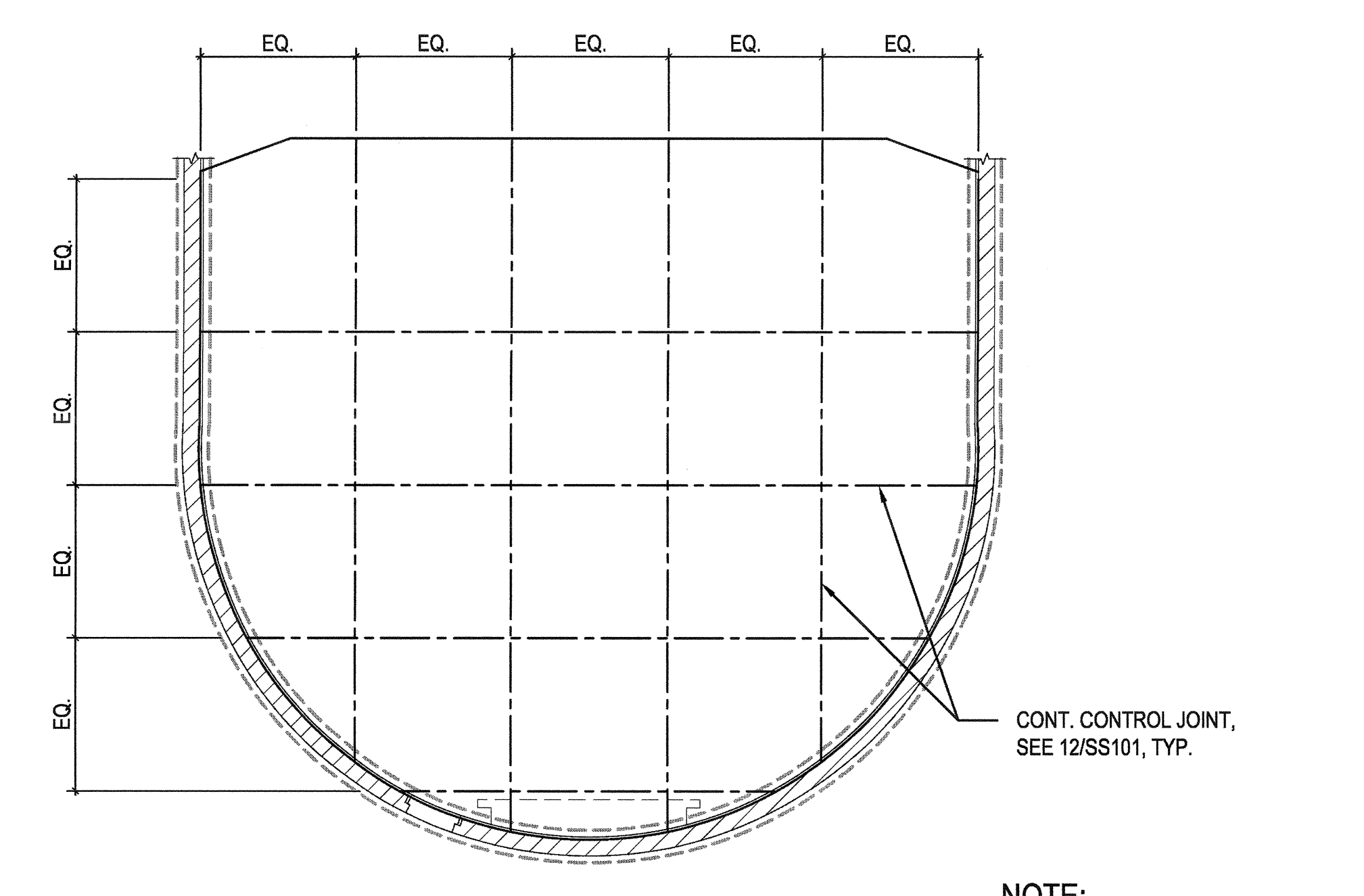
1 FOUNDATION/ FIRST FLOOR PLAN
1/8" = 1'-0"

SHEET NOTES:

1. REPLACE (E) MECHANICAL EQUIPMENT WITH NEW SIMILAR UNITS OR SIMILAR WEIGHT/DIMENSION, S.M.D.
2. (N) CONC. SLAB-ON-GRADE SHOWN SHADED.
3. BRACE TUNNEL MEP PER GENERAL NOTES SECTIONS XII & XIII AS REQ'D.

KEY NOTES:

1. STRENGTHEN EXISTING COLUMNS WITH FULL HEIGHT WELDED STEEL PLATES 36 ksi, SEE TYP. DETAIL 6/SS111, MARK 'BU1' STRENGTHEN FLOOR LEVEL COLUMN SPLICE PER DETAIL 11/SS514.
2. STRENGTHEN EXISTING COLUMNS WITH FULL HEIGHT WELDED 5/8" STEEL PLATES, 36 ksi. SEE TYPICAL DETAIL 6/SS111, MARK 'BU1'.
3. (N) CONCRETE COLLECTOR BEAM INTER-FLOOR LANDING BEAM ABOVE.
4. (N) 6" THICK CONCRETE SLAB-ON-GRADE W/ #4 @ 12" O.C., EACH WAY
5. (N) 6" THICK CONCRETE SLAB-ON-GRADE W/ #4 @ 12" O.C., EACH WAY AT RAMP AND LANDING.
6. (N) 8" THICK SUSPENDED CONC. SLAB, S.A.D. FOR MORE INFO.



2 AUDITORIUM SLAB CONTROL JOINTS
N.T.S.

- NOTE:
1. SPACING OF CONTROL JOINTS TO BE 10'-0" O.C. MAX.

CONSULTANTS: Degenkolb DEGENKOLB ENGINEERS 235 Montgomery Street, Suite 500 San Francisco, CA 94104 415.392.6952 Phone 415.981.3157 Fax www.degenkolb.com B0584020.00		ARCHITECT/ENGINEERS: HMC Architects 1827 E. Fir Avenue, Studio 103 / Fresno, CA 93720 T 559 322 2444 / www.hmcarchitects.com		Drawing Title FIRST FLOOR PLAN	Project Title BUILDING 24 SEISMIC CORRECTION AND ADDITION	Project Number 570-215	Office of Construction and Facilities Management
				Approved Project Director	Location VAMC FRESNO, CA	Building Number 24	
Revisions	Date			Date January 31, 2012	Checked WG	Drawn MAM/KM	

VA FORM 08-6231