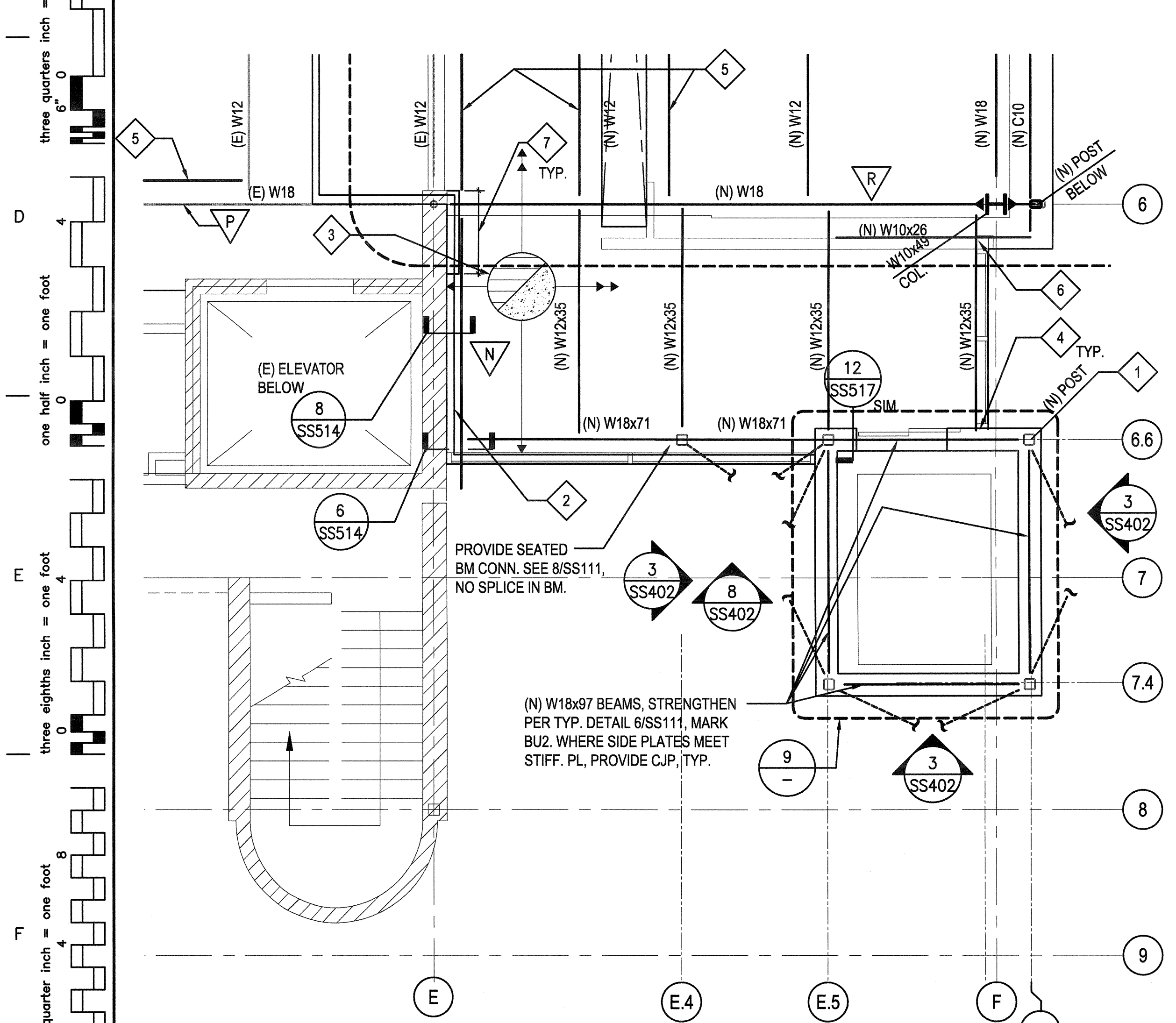
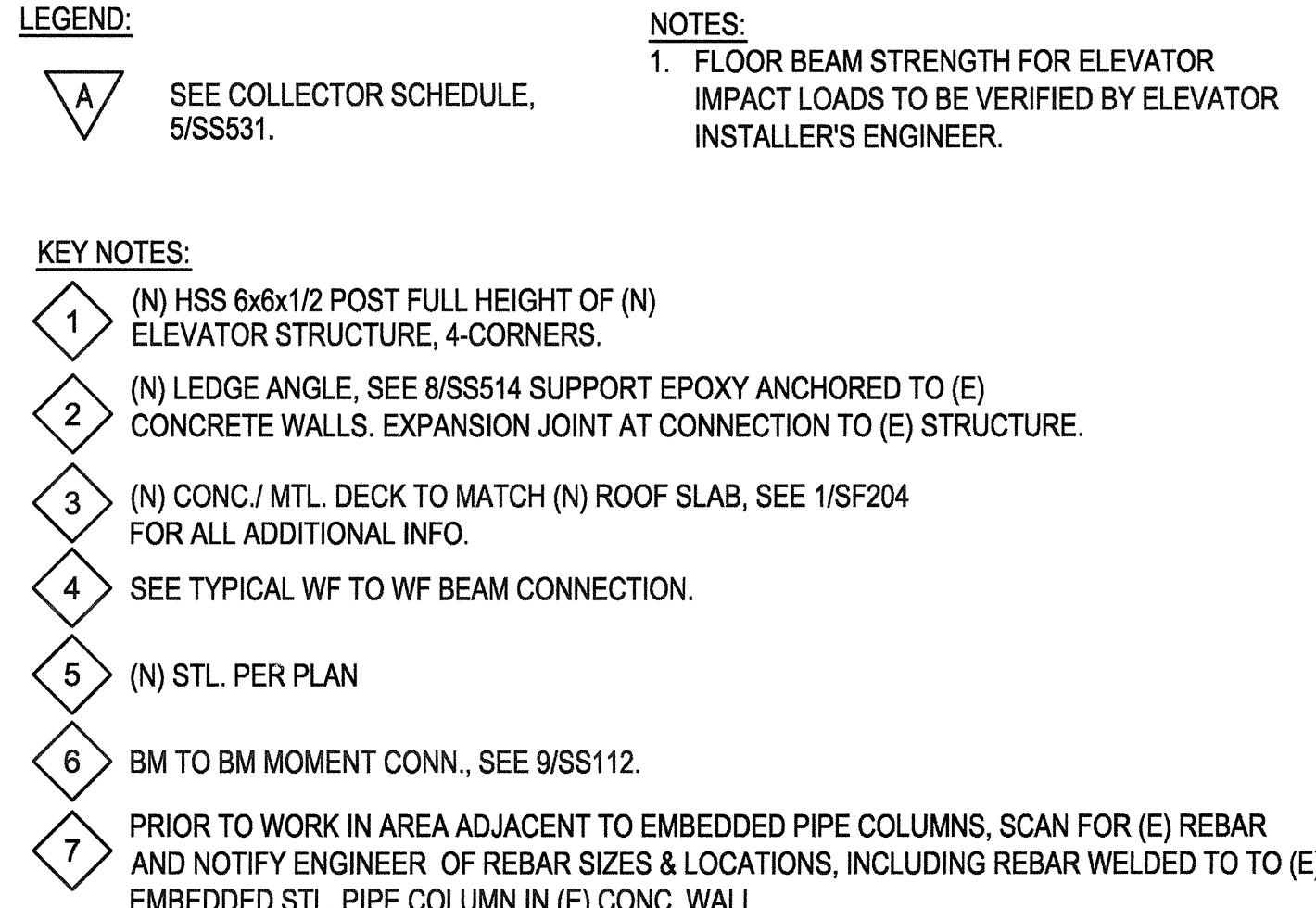


13 PARTIAL THIRD FLOOR PLAN  
N.T.S.

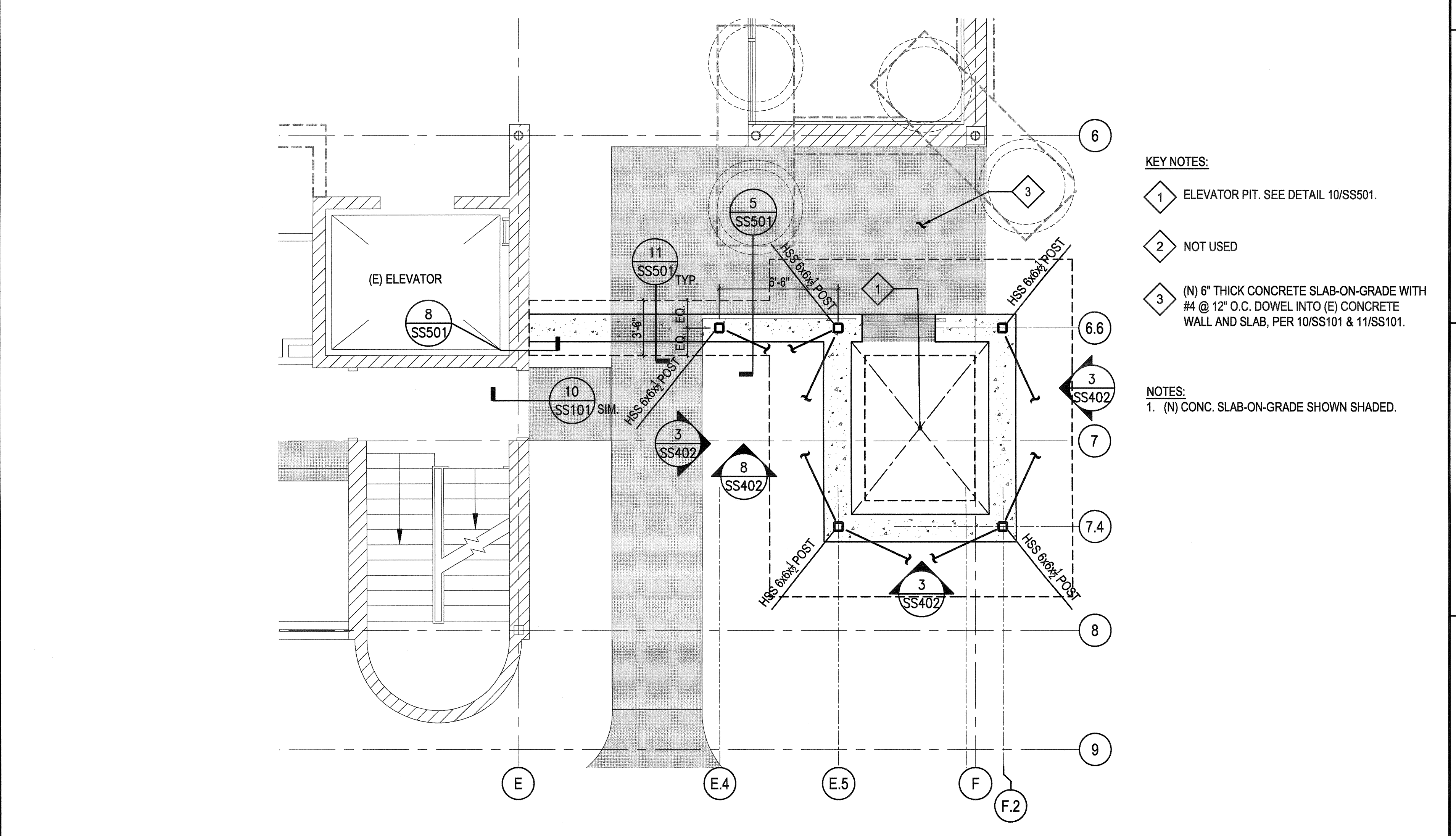
4 PARTIAL SECOND FLOOR PLAN  
N.T.S.



15 PARTIAL ROOF FRAMING PLAN  
N.T.S.



9 PARTIAL PLAN AT ELEVATOR PENTHOUSE  
N.T.S.



6 PARTIAL FOUNDATION/ FIRST FLOOR PLAN  
N.T.S.

<b>CONSULTANTS:</b> <b>Degenkolb</b> DEGENKOLB ENGINEERS 235 Montgomery Street, Suite 500 San Francisco, CA 94104 415.392.6952 Phone 415.981.3157 Fax www.degenkolb.com B0584020.00		<b>ARCHITECT/ENGINEERS:</b> <b>HMC Architects</b> 1827 E. Fir Avenue, Studio 103 / Fresno, CA 93720 T 559 322 2444 / www.hmcarchitects.com		<b>Drawing Title</b> ENLARGED PLAN AT SOUTHEAST CORNER <b>Approved Project Director</b>		<b>Project Title</b> BUILDING 24 SEISMIC CORRECTION AND ADDITION <b>Location</b> VAMC FRESNO, CA <b>Date</b> January 31, 2012 <b>Checked</b> WG <b>Drawn</b> MAM/KM		<b>Project Number</b> 570-215 <b>Building Number</b> 24 <b>Drawing Number</b> SF205 Dwg. 17 of 180		<b>Office of Construction and Facilities Management</b> Department of Veterans Affairs	
---	--	---	--	--	--	--	--	--	--	---	--