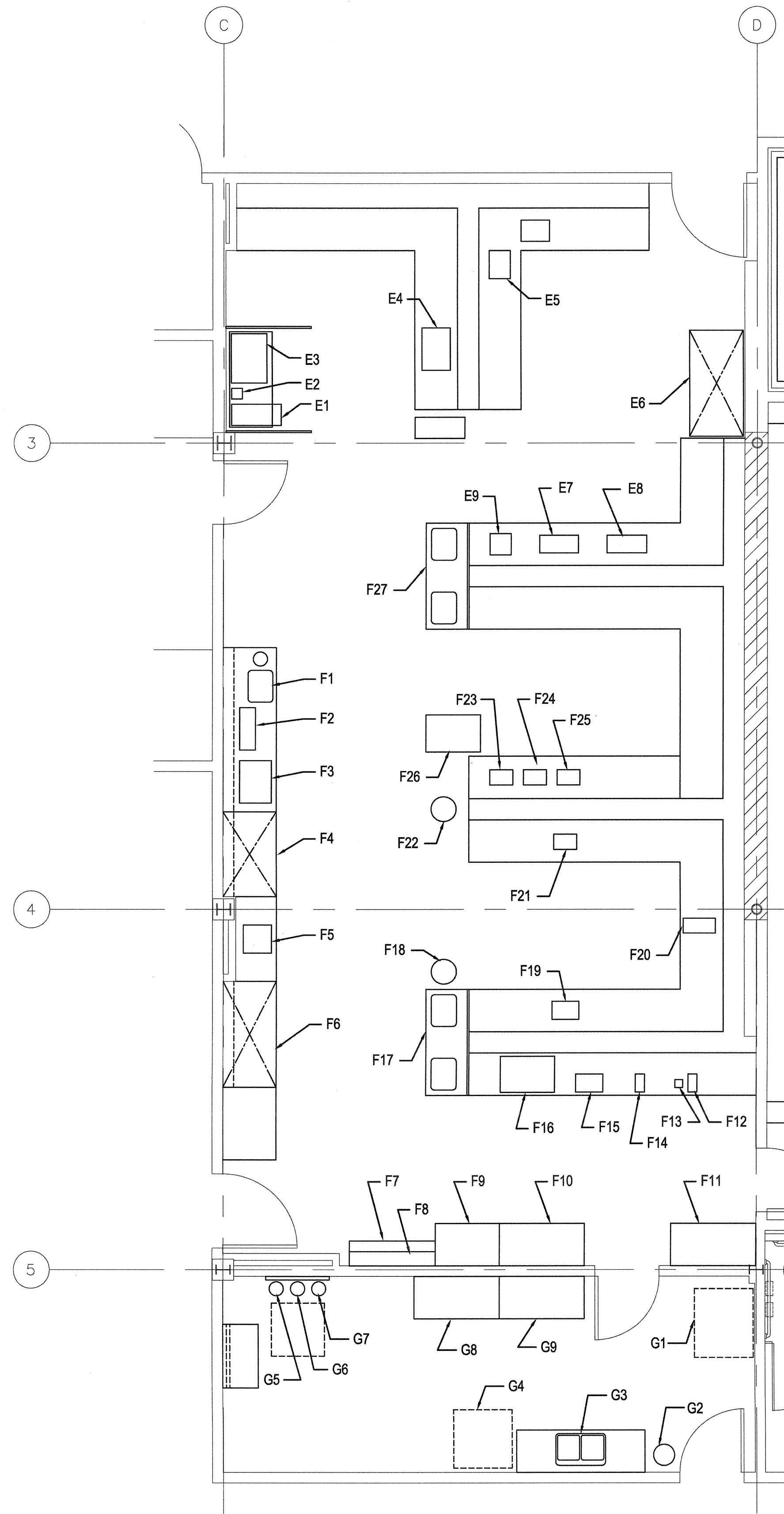
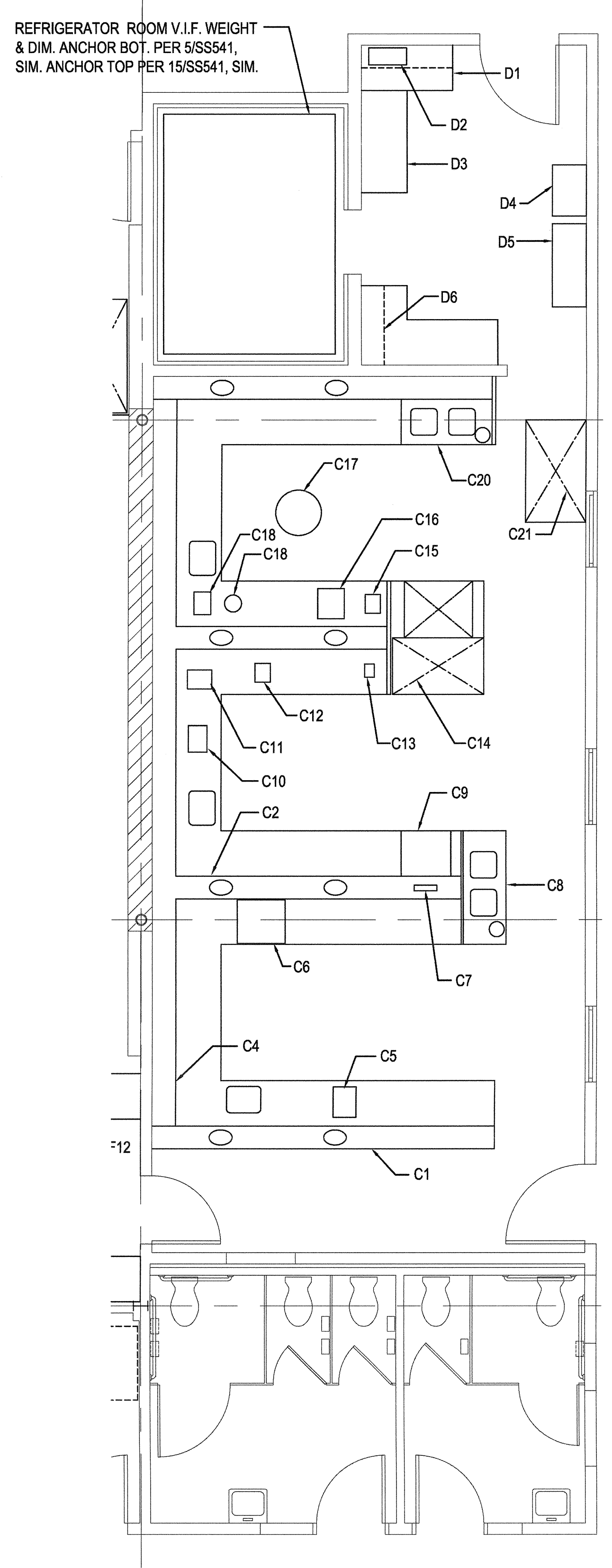


one eighth inch = one foot
one quarter inch = one foot
three eighths inch = one foot
one half inch = one foot
three quarters inch = one foot
one inch = one foot
one and one half inches = one foot
two inches = one foot
three inches = one foot



2 PARTIAL 3RD FLOOR NON-STRUCTURAL PLAN

1/4" = 1'-0"



1 PARTIAL 3RD FLOOR NON-STRUCTURAL PLAN

1/4" = 1'-0"

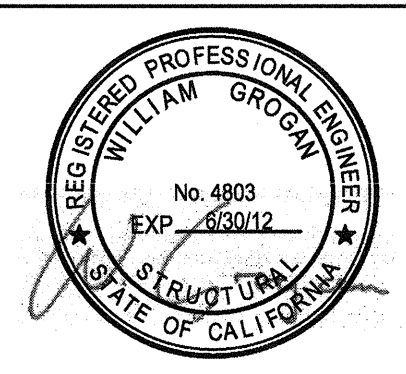


SHEET NOTES:

1. FOR EQUIPMENT SCHEDULE & ANCHORAGE / BRACING REQUIREMENTS, SEE SHEET SS532.
2. CONTRACTOR TO REVIEW LAB SPACES. MODIFY BRACING/ANCHORAGE DETAILS AS NECESSARY BASED ON CURRENT EQUIPMENT LAYOUT.
3. CONTRACTOR TO VERIFY HAZARDOUS MATERIALS CONTENT PRIOR TO STARTING BRACING/ANCHORAGE WORK. NOTE THAT BLACK COUNTER TOPS DO CONTAIN ASBESTOS. CONTRACTOR TO SUBMIT METHOD/PLAN OF ATTACHMENT FOR REVIEW/APPROVAL BY THE VA.

CONSULTANTS:

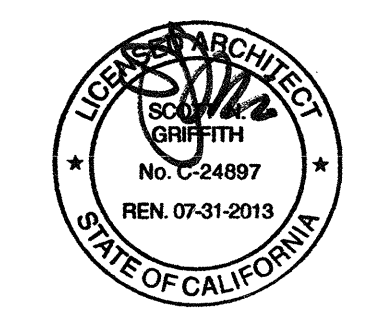
Degenkolb
DEGENKOLB ENGINEERS
235 Montgomery Street, Suite 500
San Francisco, CA 94104
415.392.8952 Phone
415.881.3157 Fax
www.degenkolb.com
80584020.00



ARCHITECT/ENGINEERS:

HMC Architects

1827 E. Fir Avenue, Studio 103 / Fresno, CA 93720
T 559 322 2444 / www.hmcarchitects.com



Drawing Title
THIRD FLOOR NON-STRUCTURAL
ENLARGED PLANS

Approved Project Director

Project Title
BUILDING 24
SEISMIC CORRECTION
AND ADDITION

Location
VAMC FRESNO, CA

Date
January 31, 2012

Checked
WG

Drawn
MAM/KM

Project Number
570-215

Building Number
24

Drawing Number

SS203A

Dwg. 22 of 180

Office of
Construction
and Facilities
Management

