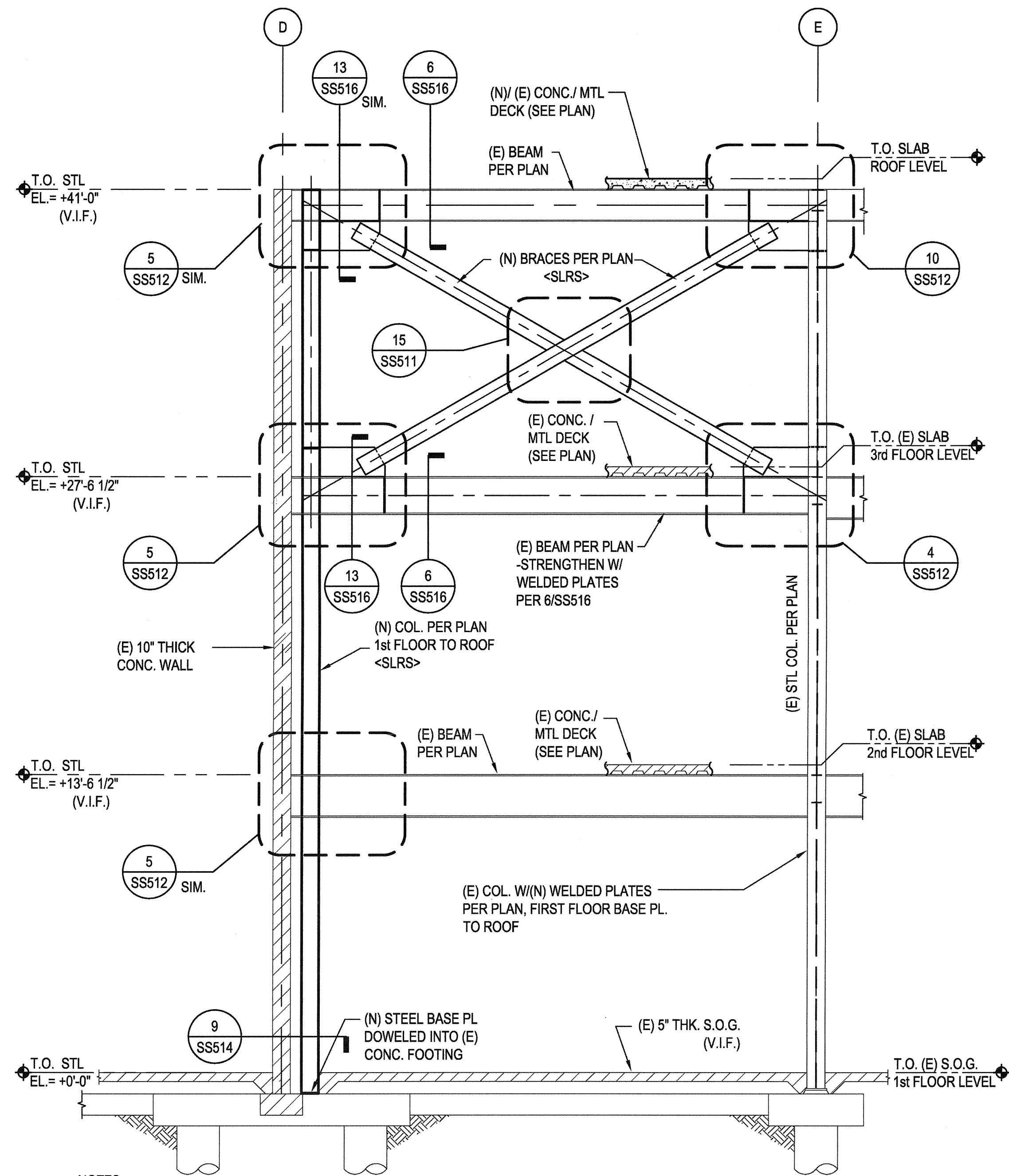


- NOTES:
- SEE 3- FOR PROTECTED ZONE LOCATIONS.
  - COL. STRENGTHENING PLATES TO BE WELDED PRIOR TO WELDING (N) BRACES TO BEAM/COL. GUSSETS.
  - AESS AS REQUIRED PER GENERAL NOTES.
  - PROVIDE DC WELDS FOR ALL CONNECTIONS OF SLRS.

**8 BRACED FRAME ELEVATION  
ALONG GRIDLINE 'E'**

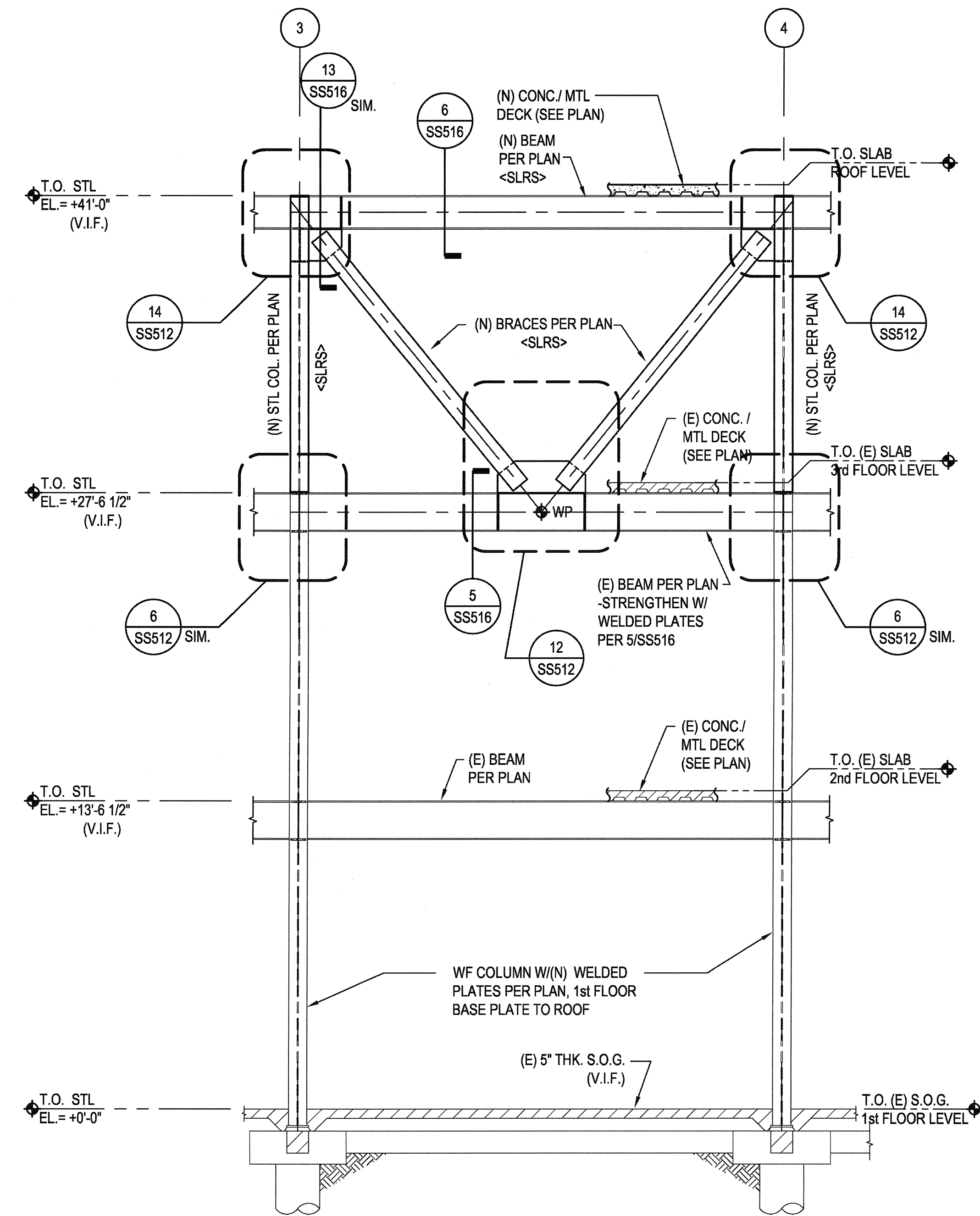
1/4"=1'-0"



- NOTES:
- SEE 3- FOR PROTECTED ZONE LOCATIONS.
  - COL. STRENGTHENING PLATES TO BE WELDED PRIOR TO WELDING (N) BRACES TO BEAM/COL. GUSSETS.
  - AESS AS REQUIRED PER GENERAL NOTES.
  - PROVIDE DC WELDS FOR ALL CONNECTIONS OR SLRS.

**5 BRACED FRAME ELEVATION  
ALONG GRIDLINE '2'**

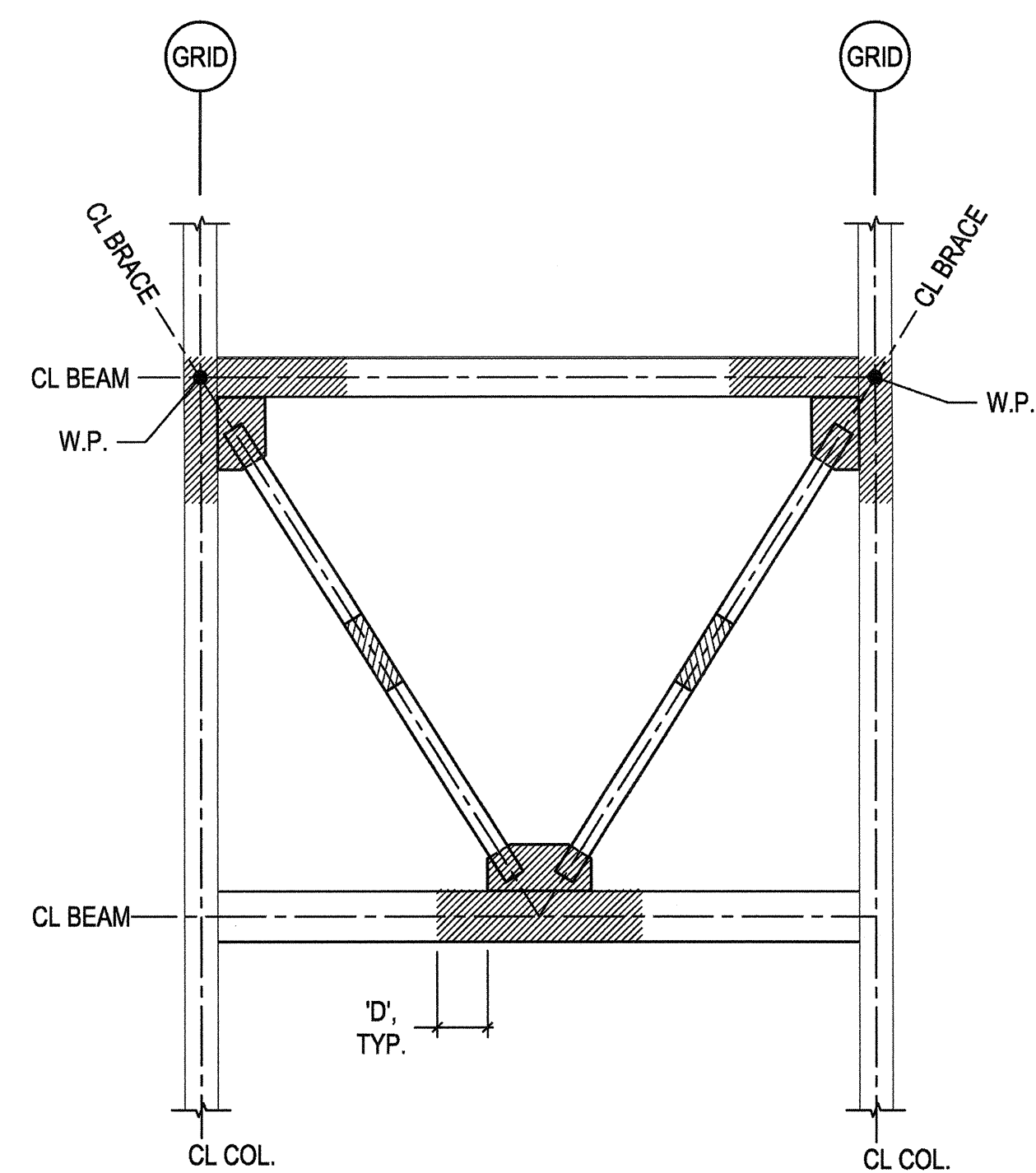
1/4"=1'-0"



- NOTES:
- SEE 3- FOR PROTECTED ZONE LOCATIONS.
  - COL. STRENGTHENING PLATES TO BE WELDED PRIOR TO WELDING (N) BRACES TO BEAM/COL. GUSSETS.
  - AESS AS REQUIRED PER GENERAL NOTES.
  - PROVIDE DC WELDS FOR ALL CONNECTIONS OF SLRS.

**2 BRACED FRAME ELEVATION  
ALONG GRIDLINE 'F'**

1/4"=1'-0"

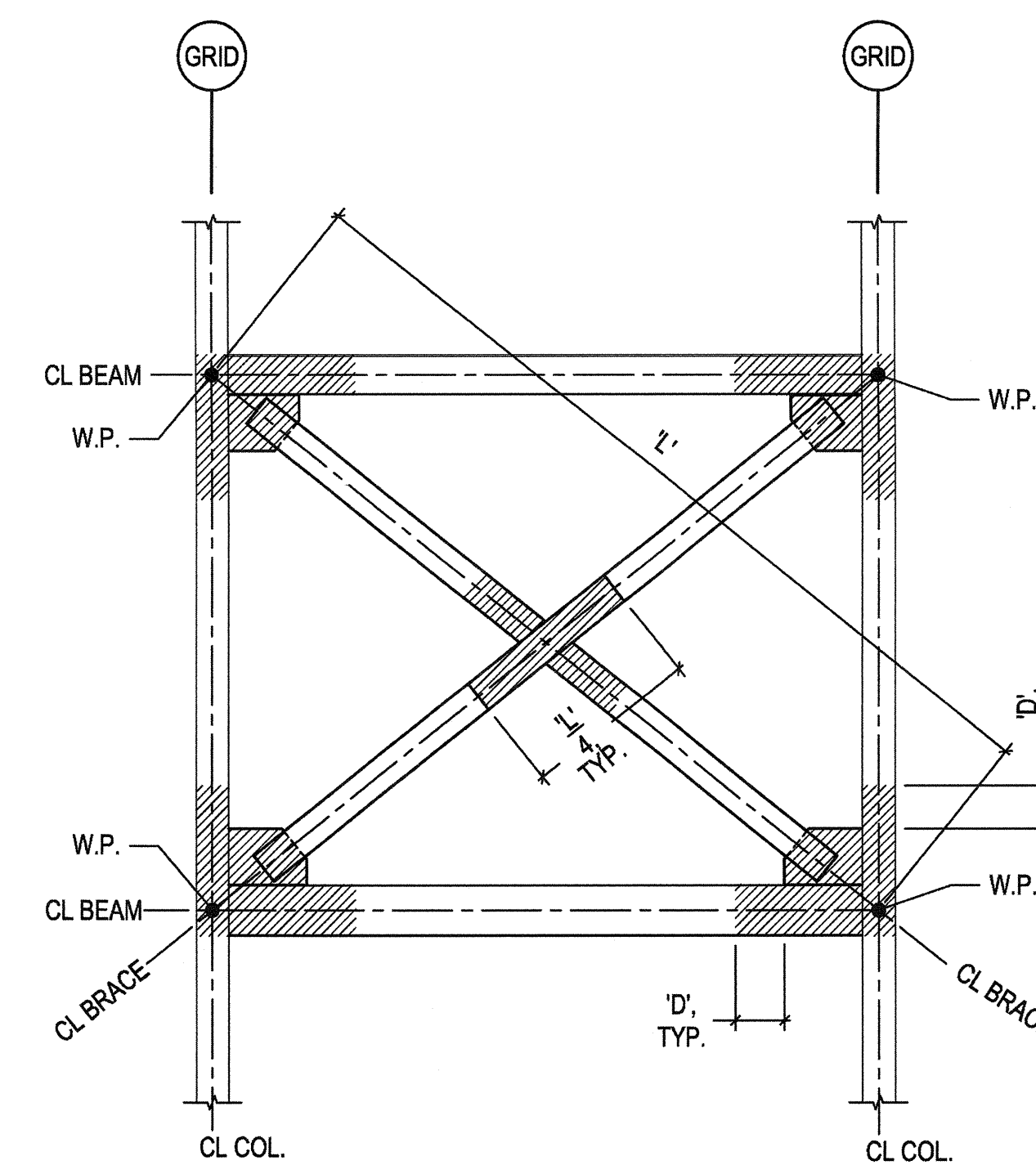


- DETAIL NOTES:
- 'D' = BRACE DEPTH OR DIAMETER
  - REQUIREMENTS FOR PROTECTED ZONES SHALL FOLLOW AISC 341-05 SECTION 13.6

LEGEND:  
PROTECTED ZONE

**6 BRACED FRAME PROTECTED ZONES**

1/4"=1'-0"



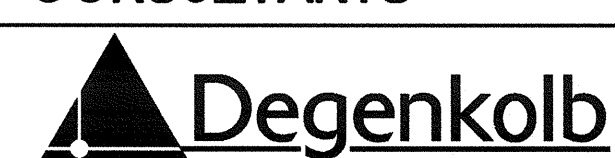
- DETAIL NOTES:
- 'D' = BRACE DEPTH OR DIAMETER
  - REQUIREMENTS FOR PROTECTED ZONES SHALL FOLLOW AISC 341-05 SECTION 13.6

LEGEND:  
PROTECTED ZONE

**3 BRACED FRAME PROTECTED ZONES**

1/4"=1'-0"

CONSULTANTS:



DEGENKOLB ENGINEERS  
235 Montgomery Street, Suite 500  
San Francisco, CA 94104  
415.392.8952 Phone  
415.981.3157 Fax  
www.degenkolb.com  
80584020.00

ARCHITECT/ENGINEERS:



1827 E. Fir Avenue, Studio 103 / Fresno, CA 93720  
T 559 322 2444 / www.hmcarchitects.com

Drawing Title

ELEVATIONS

Approved Project Director

Project Title  
**BUILDING 24  
SEISMIC CORRECTION  
AND ADDITION**

Location  
**VAMC FRESNO, CA**

Date  
January 31, 2012

Checked  
WG

Drawn  
MAM/KM

Project Number  
**570-215**

Building Number  
**24**

Drawing Number  
**SS401**

Dwg. 27 of 180

Office of  
Construction  
and Facilities  
Management

