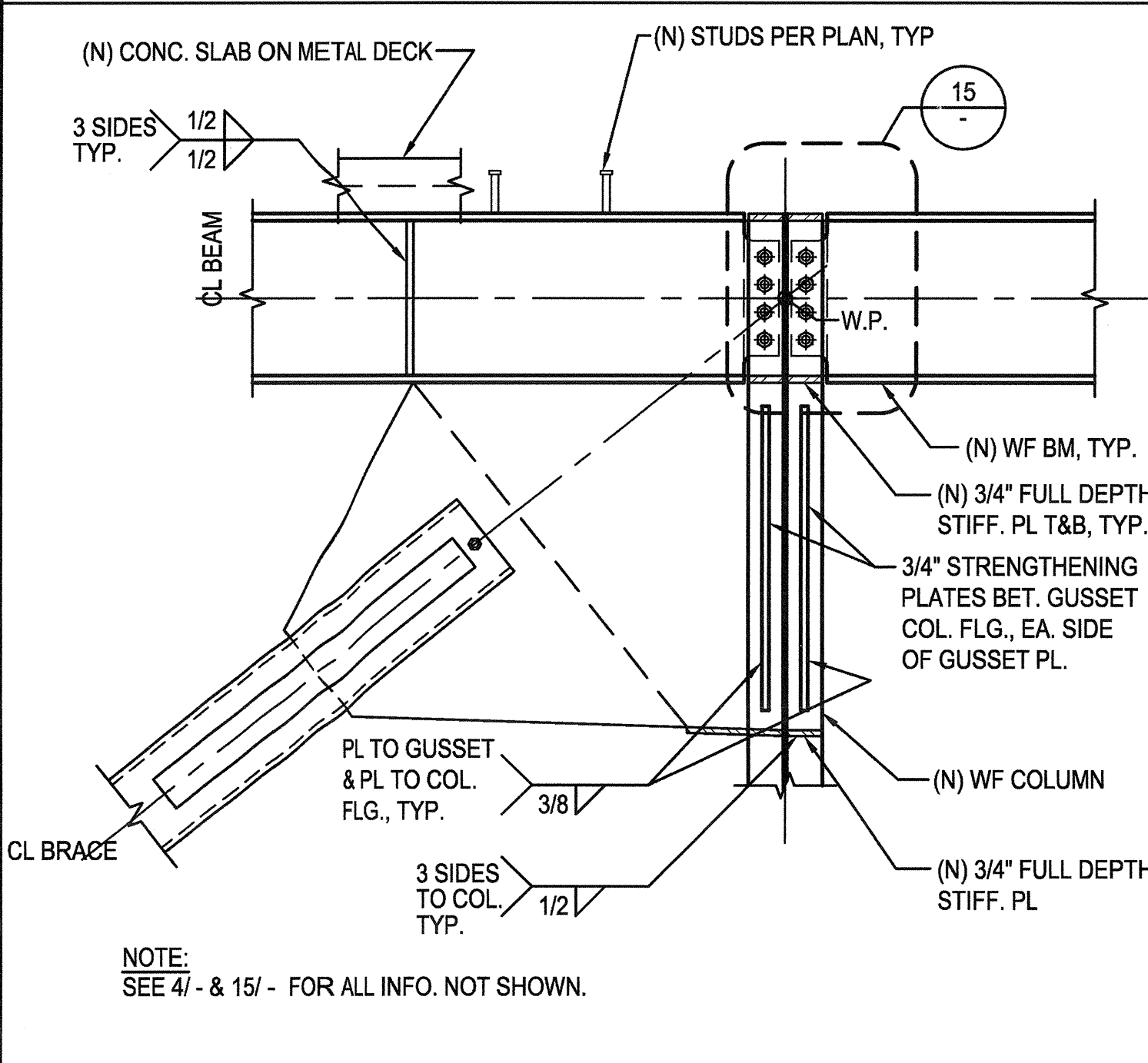
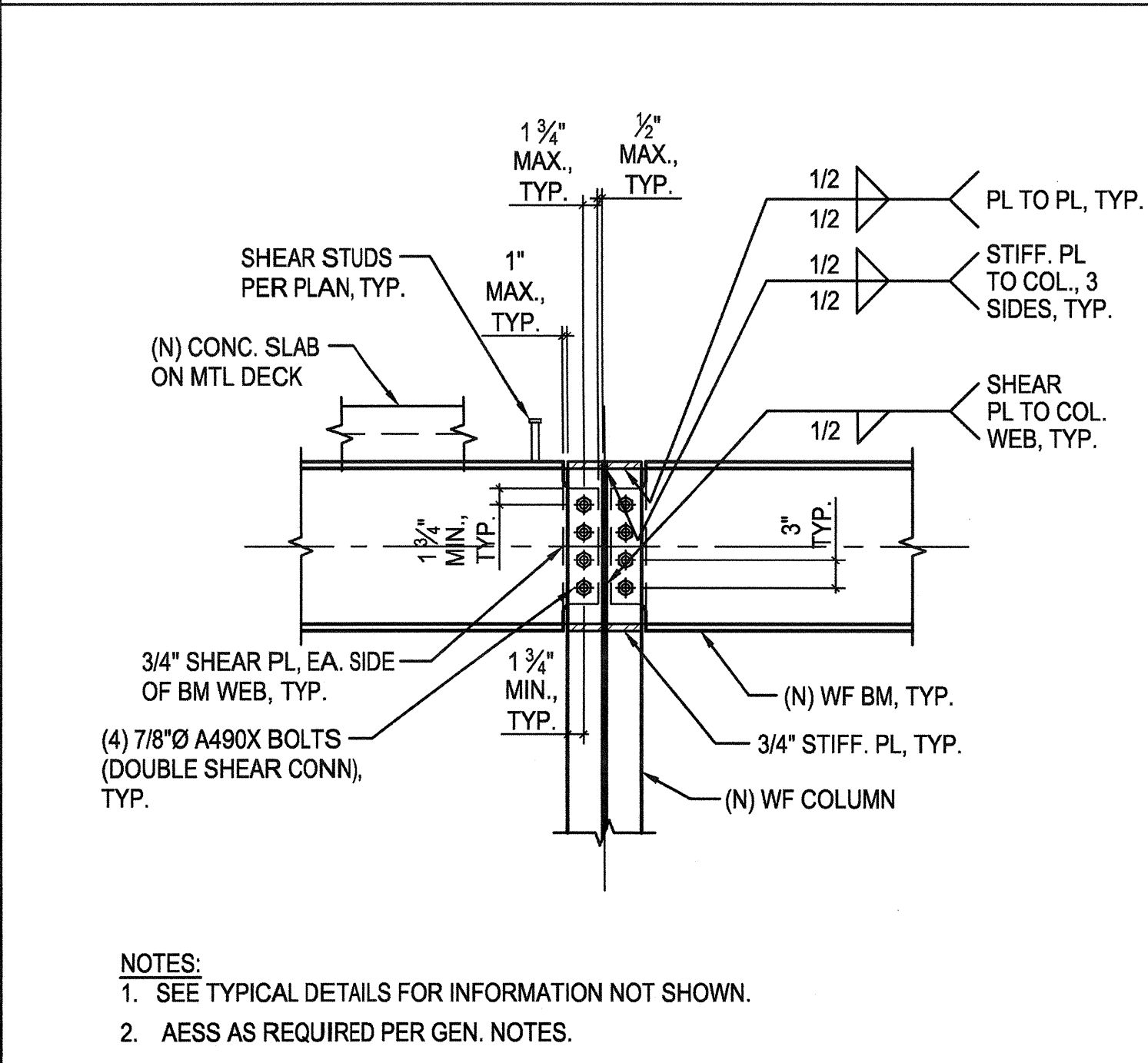


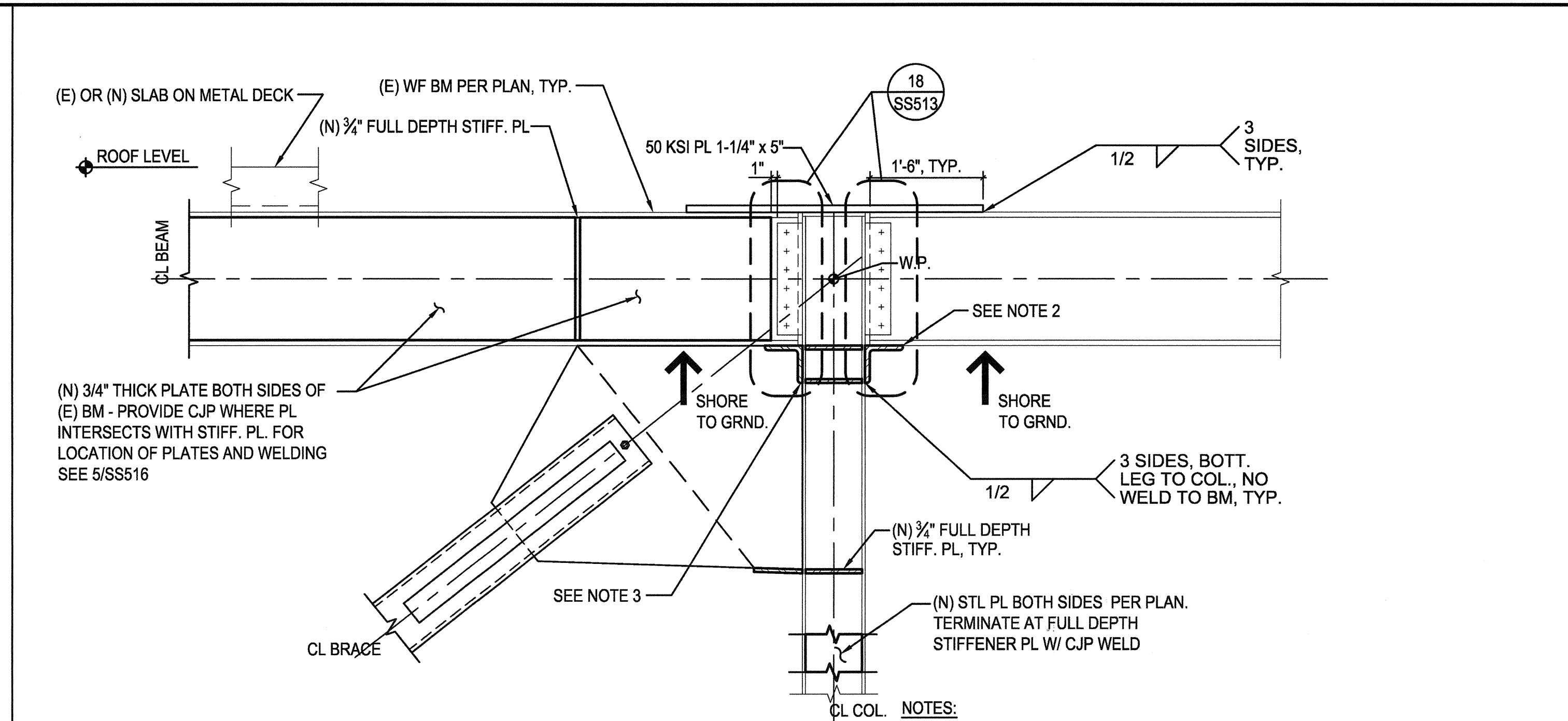
13 ENHANCED BM-TO-BM CONN.
N.T.S.



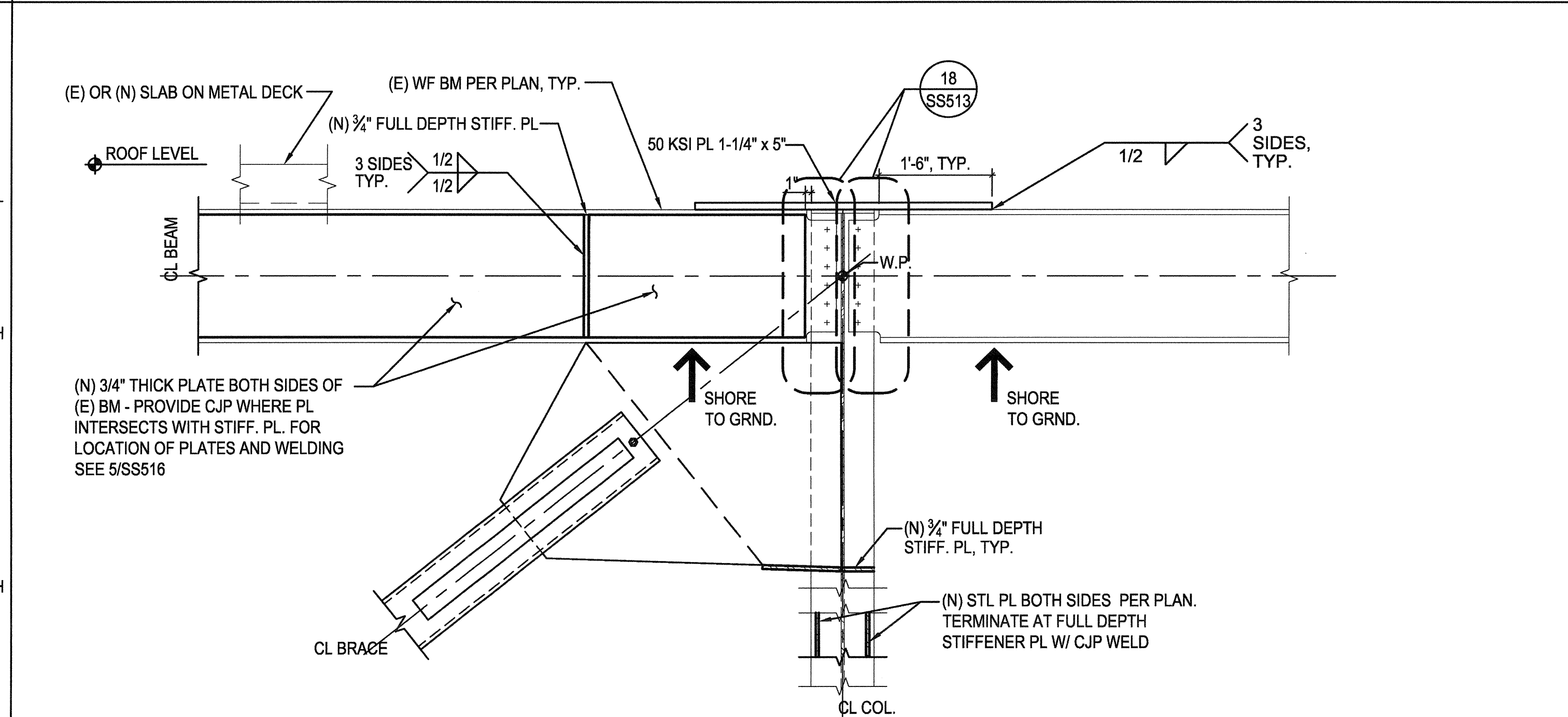
14 BRACE AT (N) WF BM TO WF COL. WEAK-WAY CONNECTION AT ROOF
N.T.S.



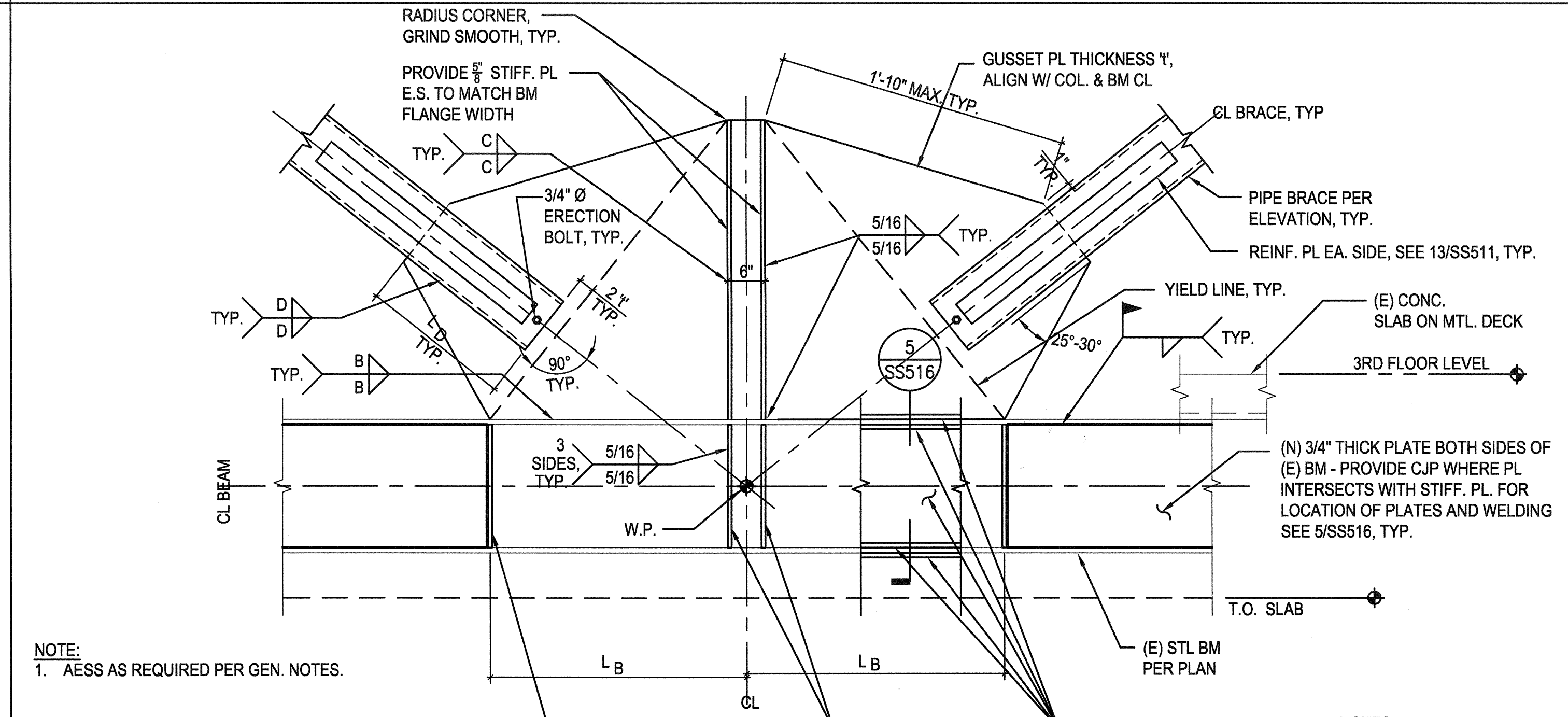
15 BEAM TO BEAM COL. CONNECTION AT ROOF
N.T.S.



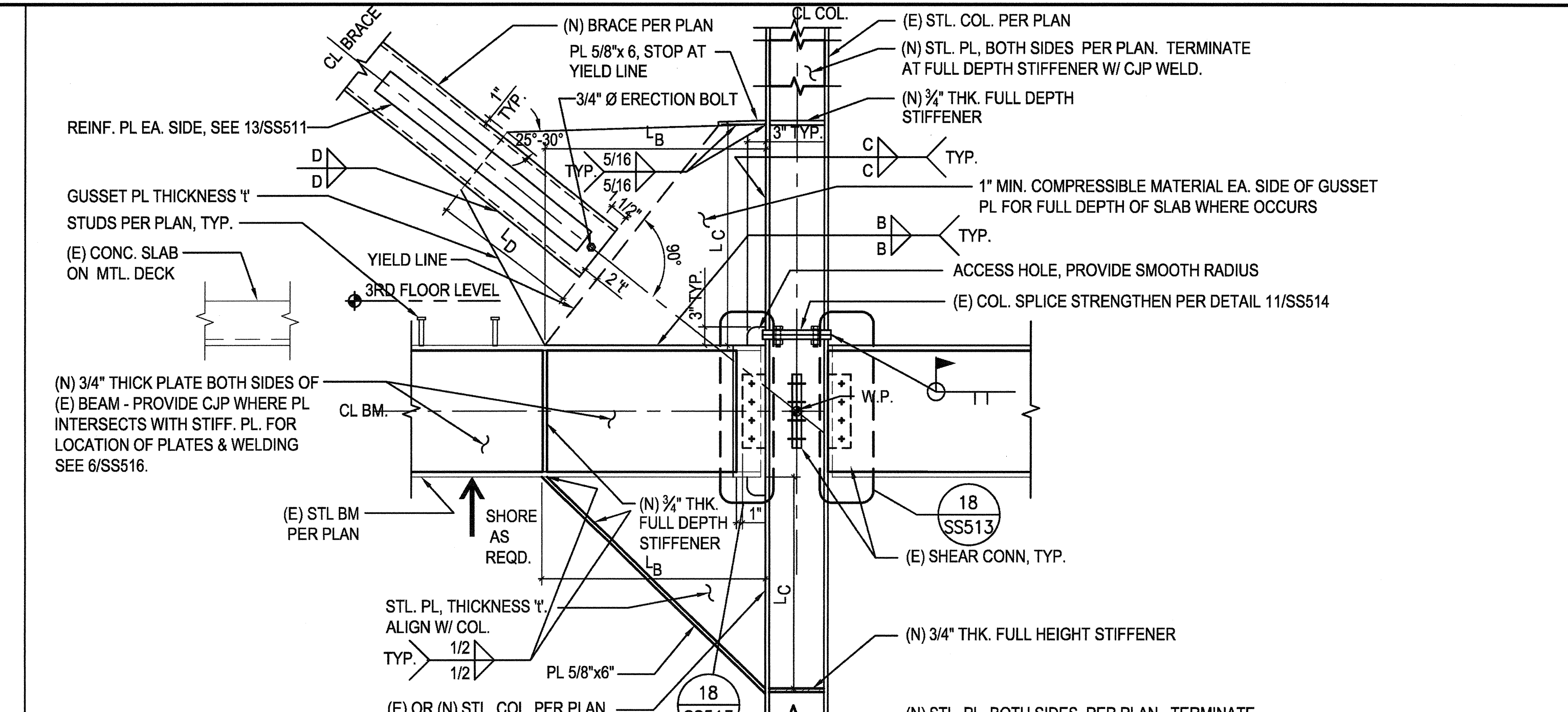
10 BRACE AT (E) WF BM TO WF COL. STRONG-WAY CONNECTION AT (E) ROOF
N.T.S.



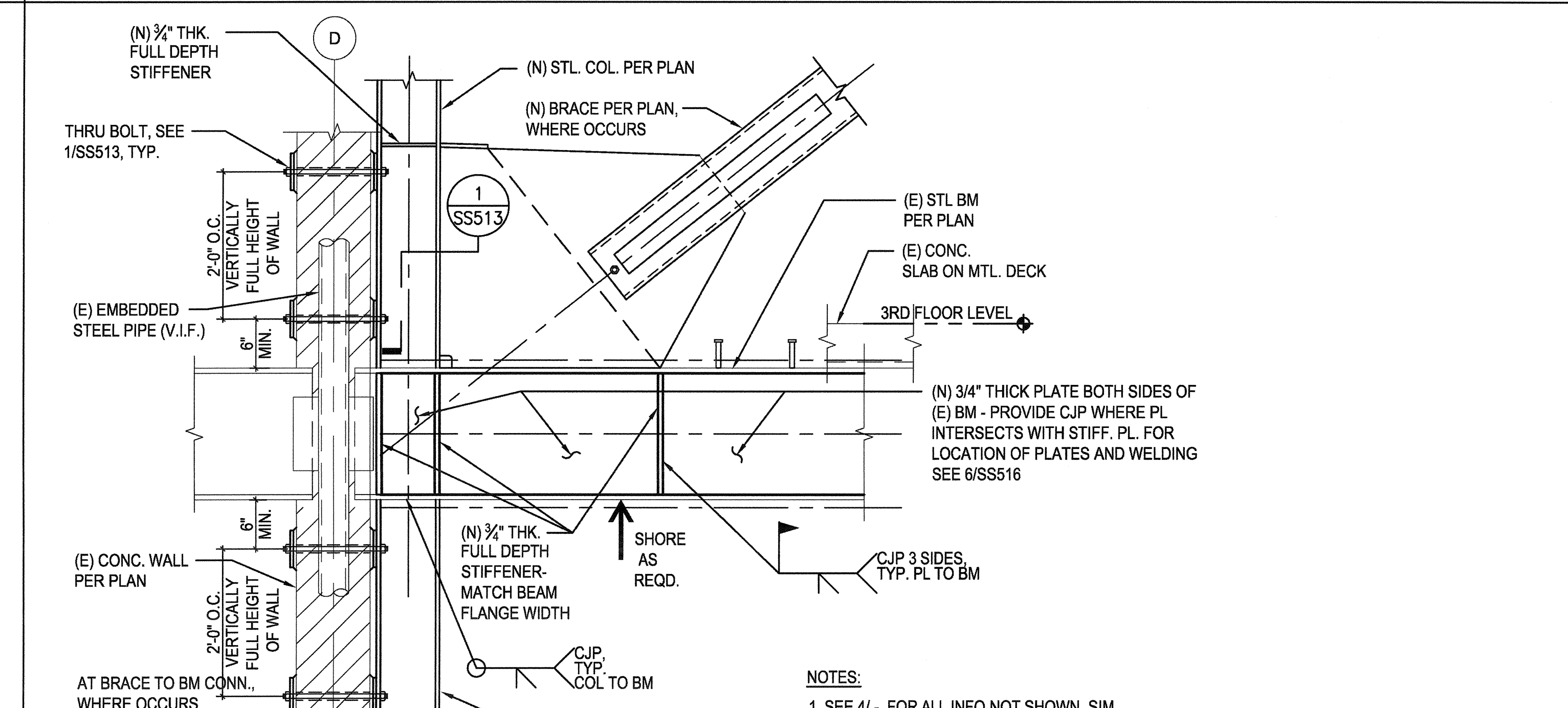
11 BRACE AT (E) WF BM TO WF COL. WEAK-WAY CONNECTION AT (E) ROOF
N.T.S.



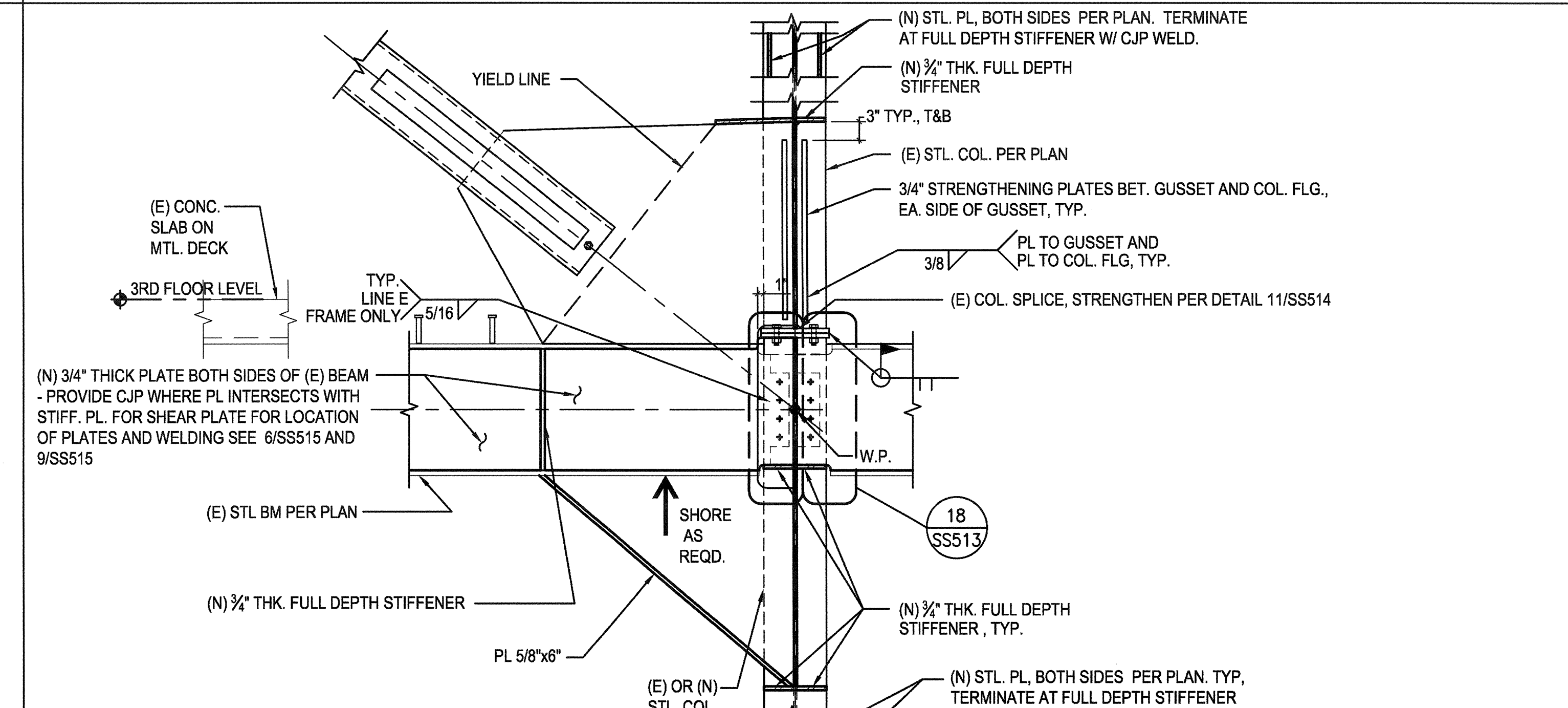
12 BRACED FRAME CONNECTION AT MIDSPAN
N.T.S.



4 BRACE AT (E) WF BM TO WF COL. STRONG-WAY CONNECTION
N.T.S.



5 (E) STEEL BEAM STRENGTHENING
N.T.S.



6 BRACE AT (E) WF BM TO WF COL. WEAK-WAY CONNECTION
N.T.S.

CONSULTANTS: Degenkolb DEGENKOLB ENGINEERS 235 Montgomery Street, Suite 500 San Francisco, CA 94104 415.392.6952 Phone 415.981.3157 Fax www.degenkolb.com 90584020.00		ARCHITECT/ENGINEERS: HMC Architects 1827 E. Fir Avenue, Studio 103 / Fresno, CA 93720 T 559 322 2444 / www.hmcarchitects.com		Project Title BUILDING 24 SEISMIC CORRECTION AND ADDITION Location VAMC FRESNO, CA Date January 31, 2012		Project Number 570-215 Building Number 24 Drawing Number SS512 Dwg. 31 of 180		Office of Construction and Facilities Management 	
Drawing Title STEEL DETAILS Approved Project Director		Checked WG		Drawn MAM/KM		Revisions		Date	