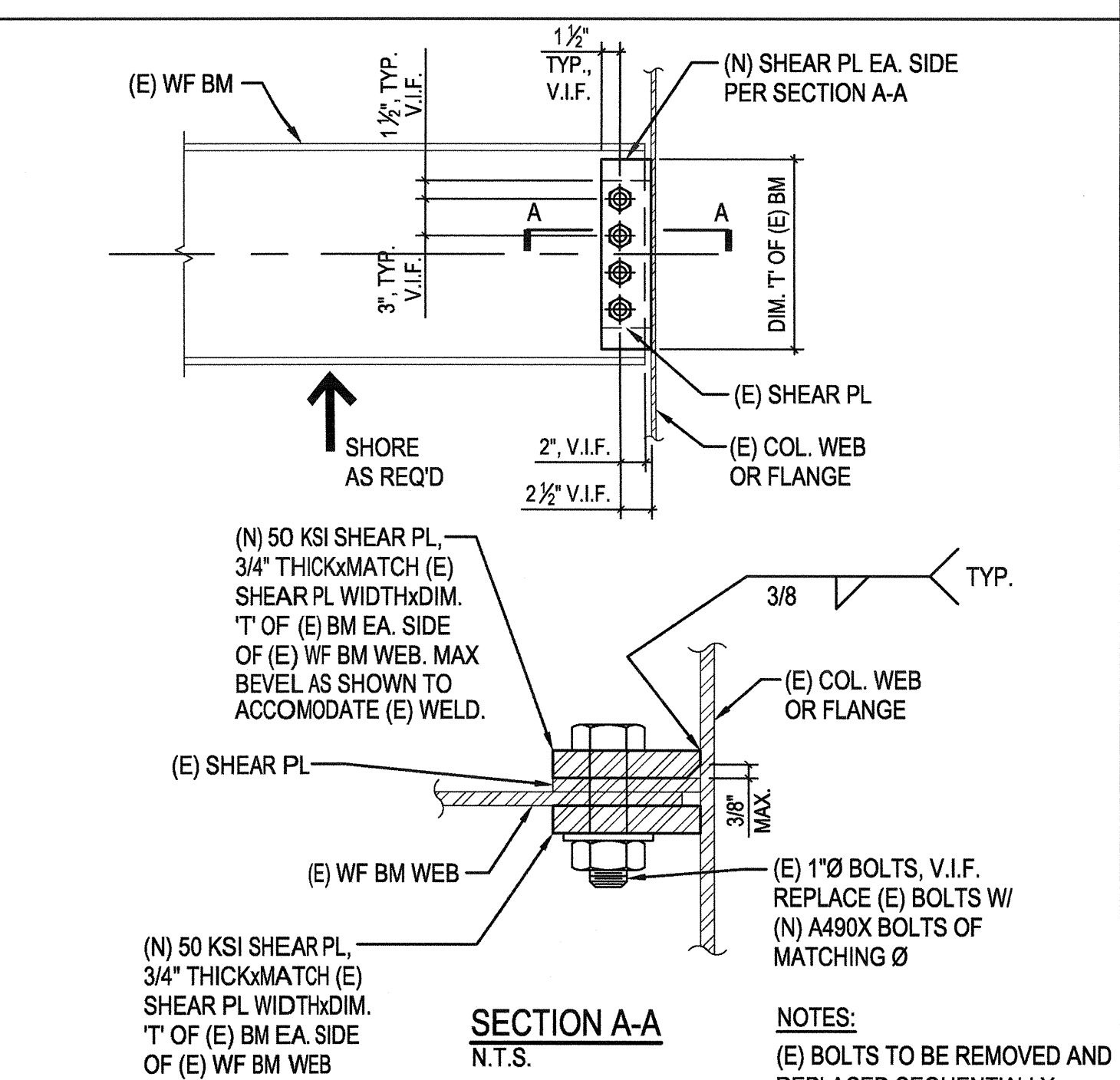
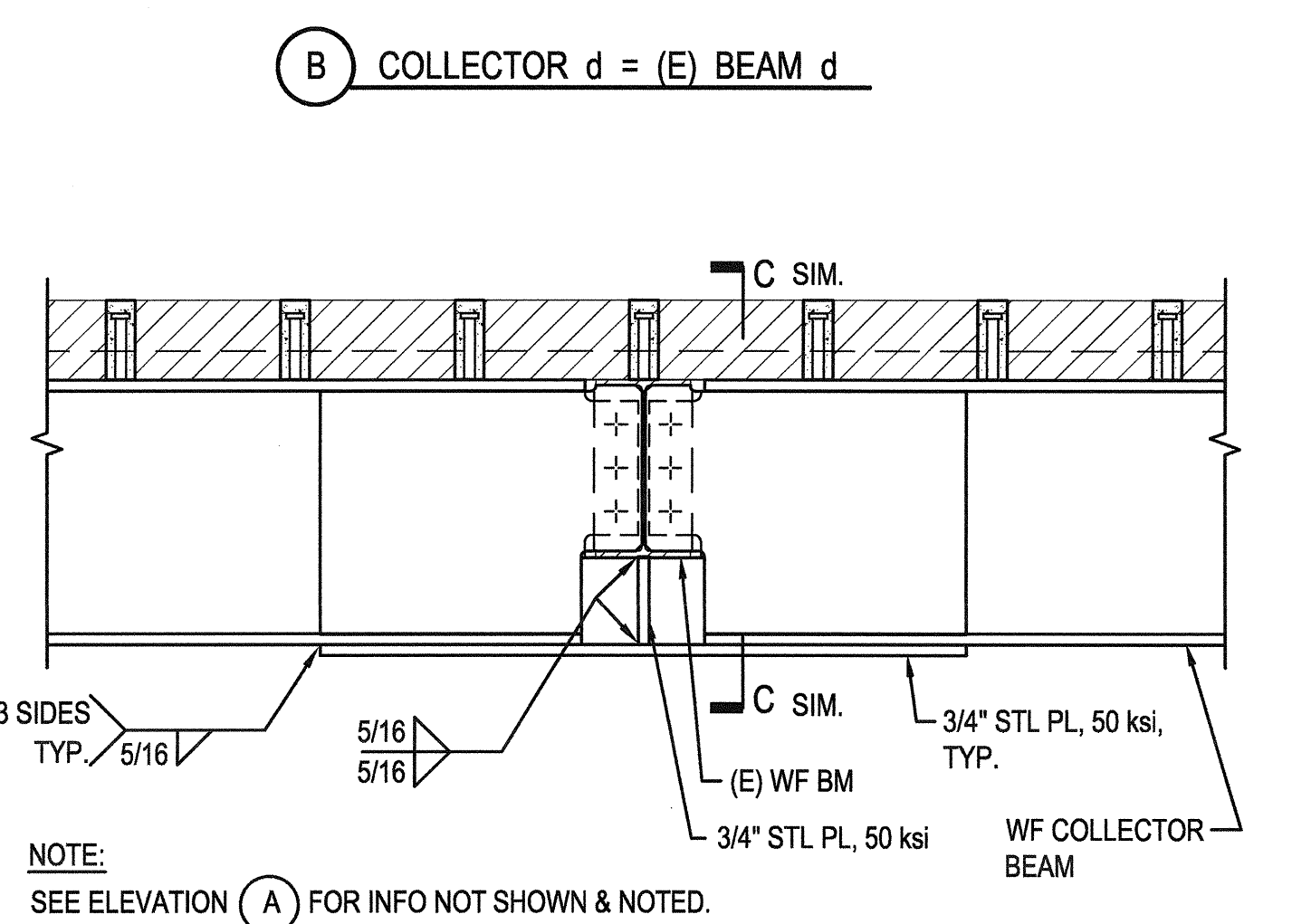
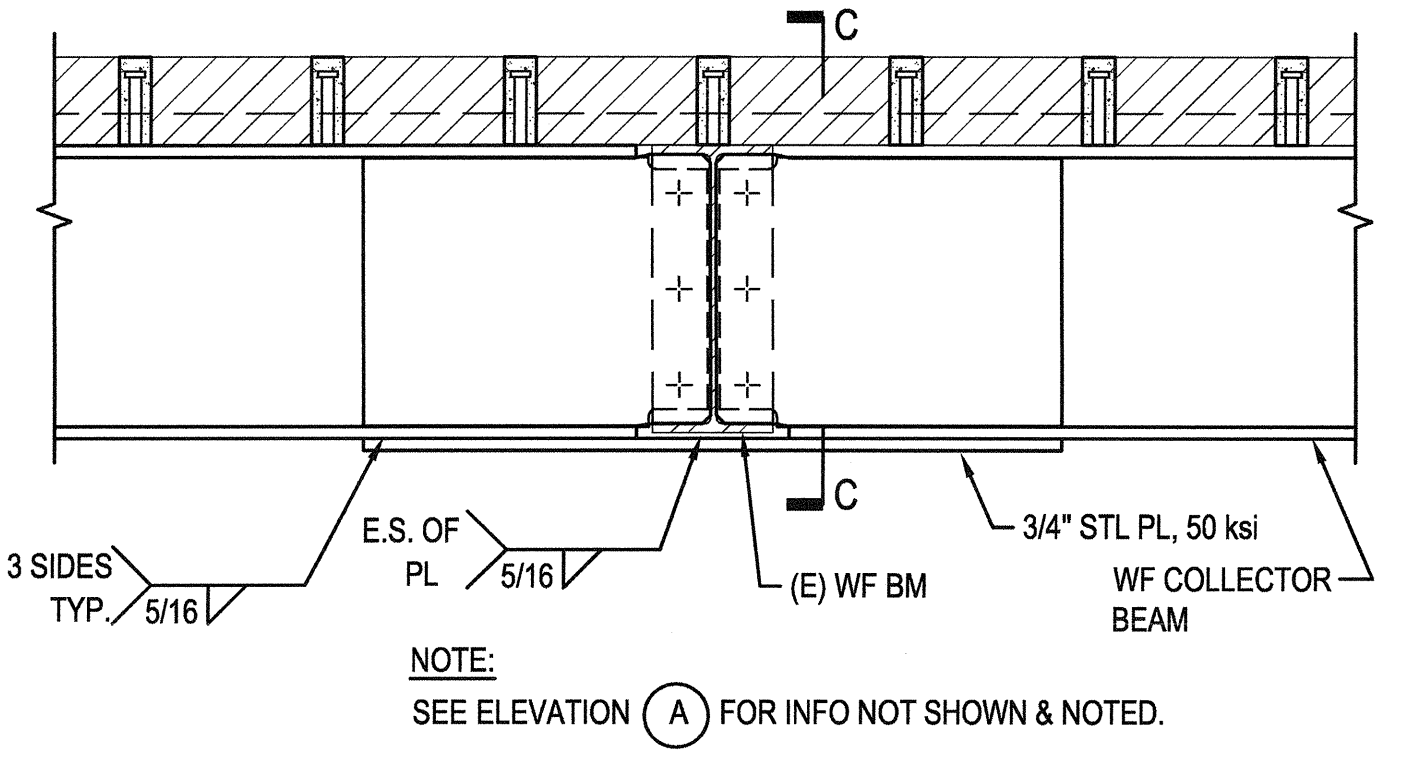
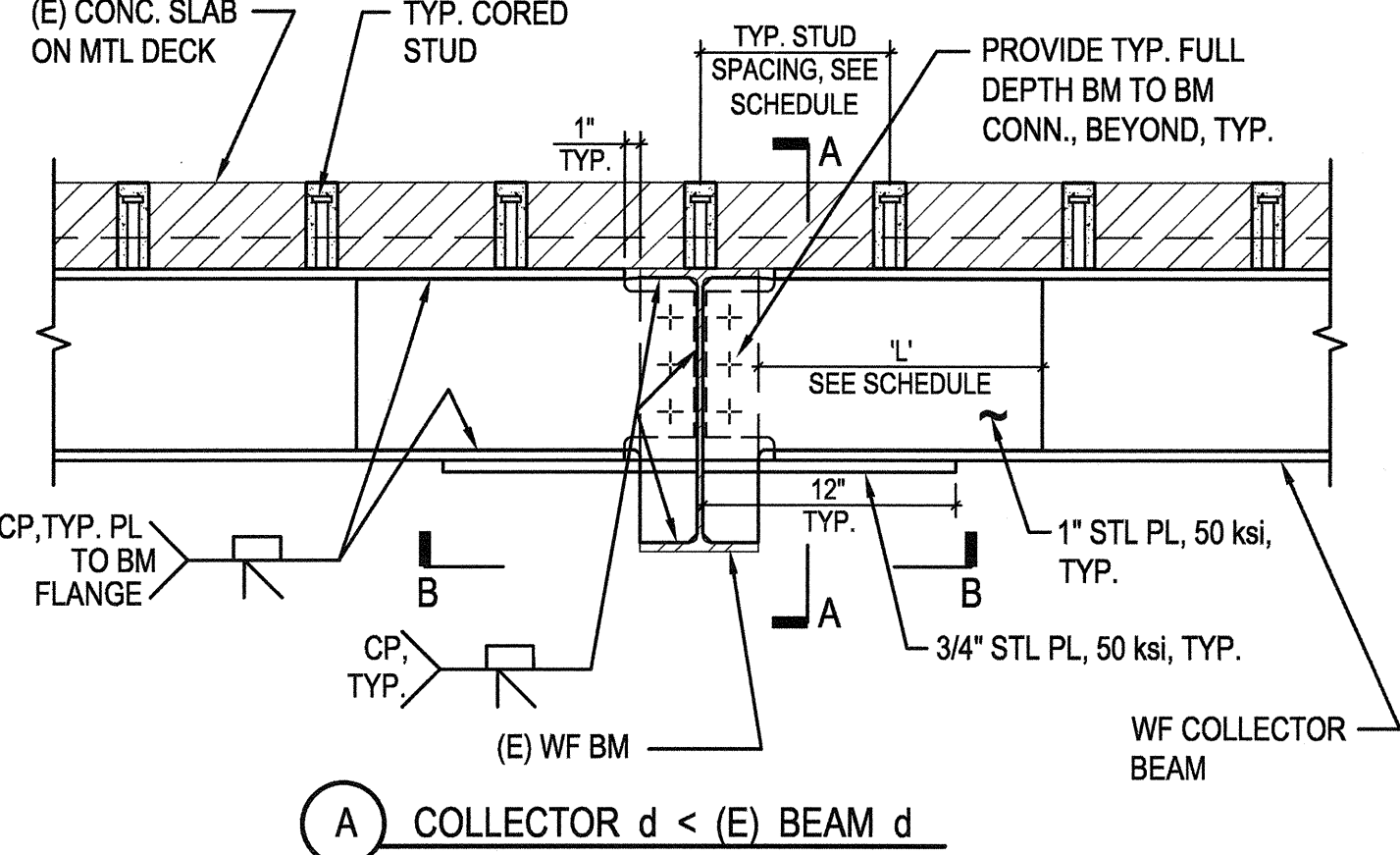


NOTES:
1. SEE 5/SS531 FOR COLLECTOR SCHEDULE.

17 COLLECTOR CONNECTION THROUGH (E) CONCRETE WALL
N.T.S.

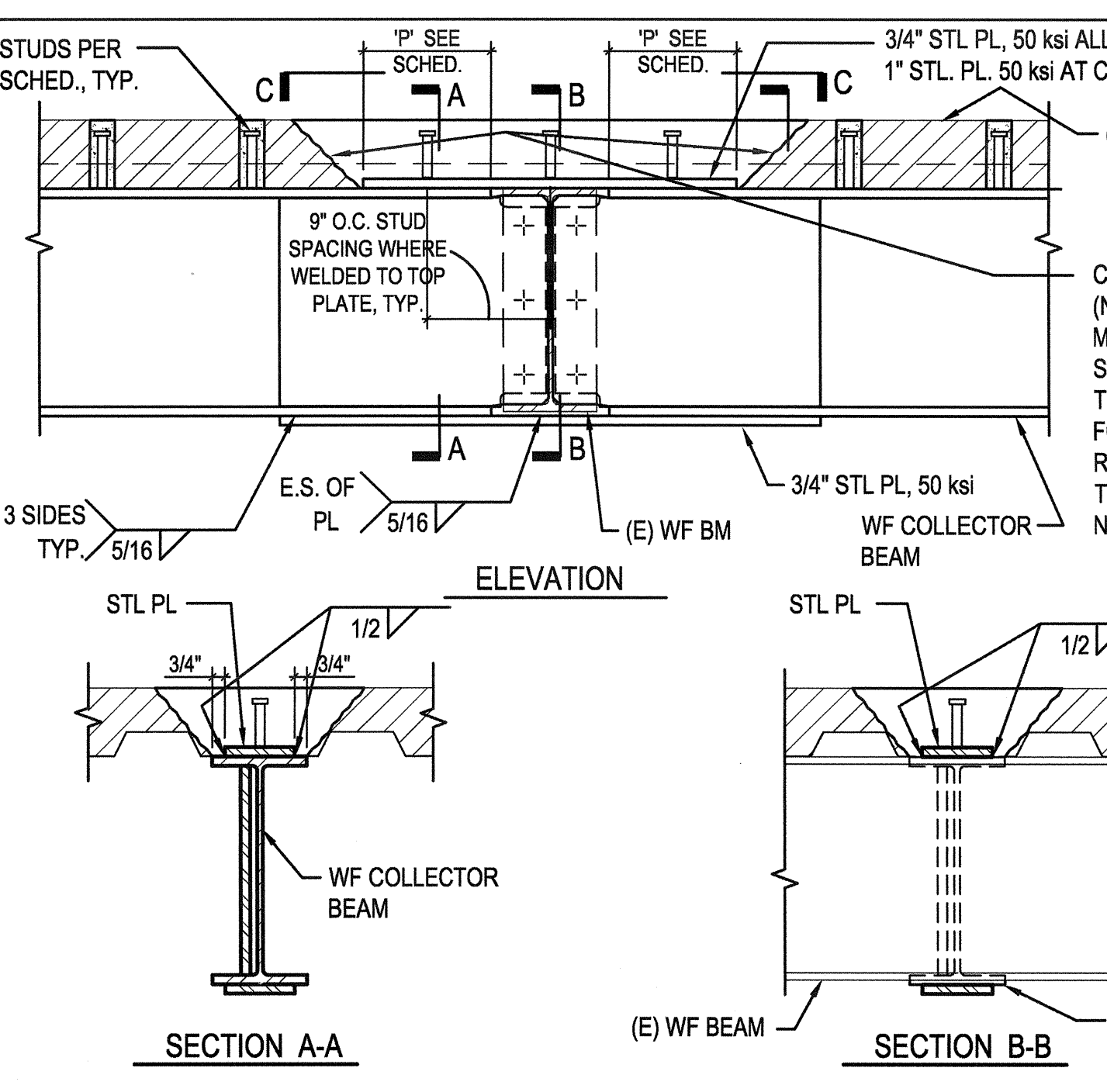


18 (E) SHEAR PLATE STRENGTHENING
N.T.S.

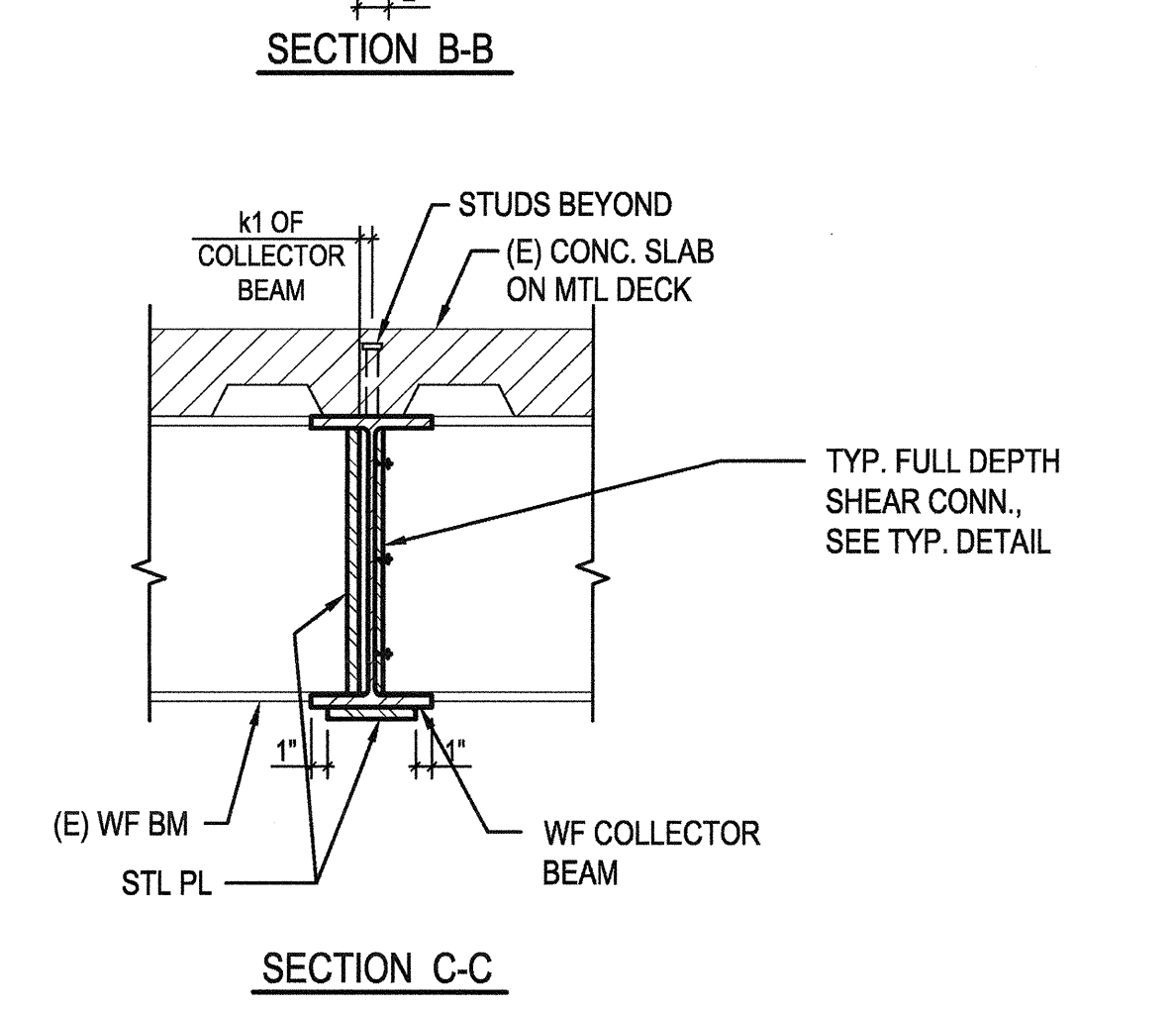
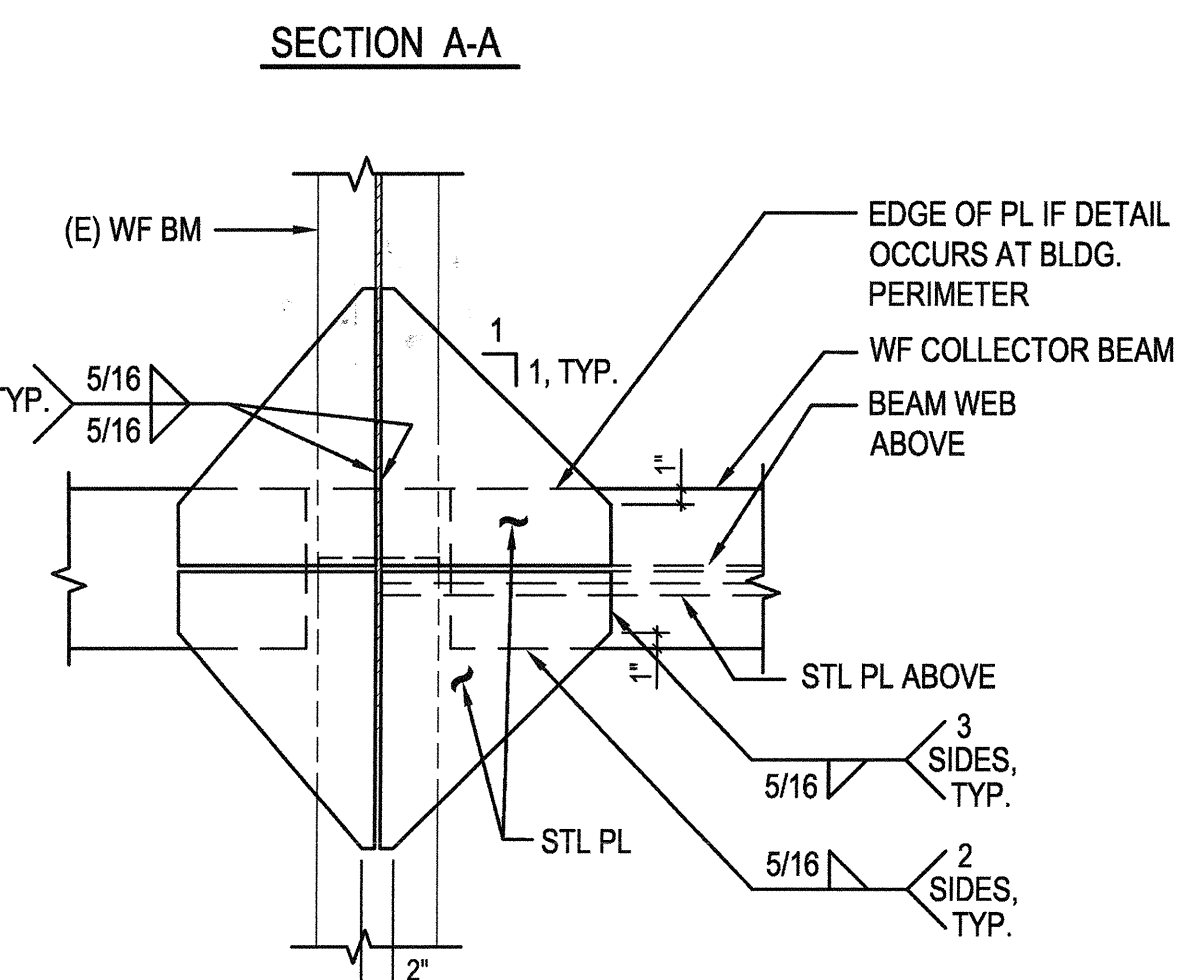
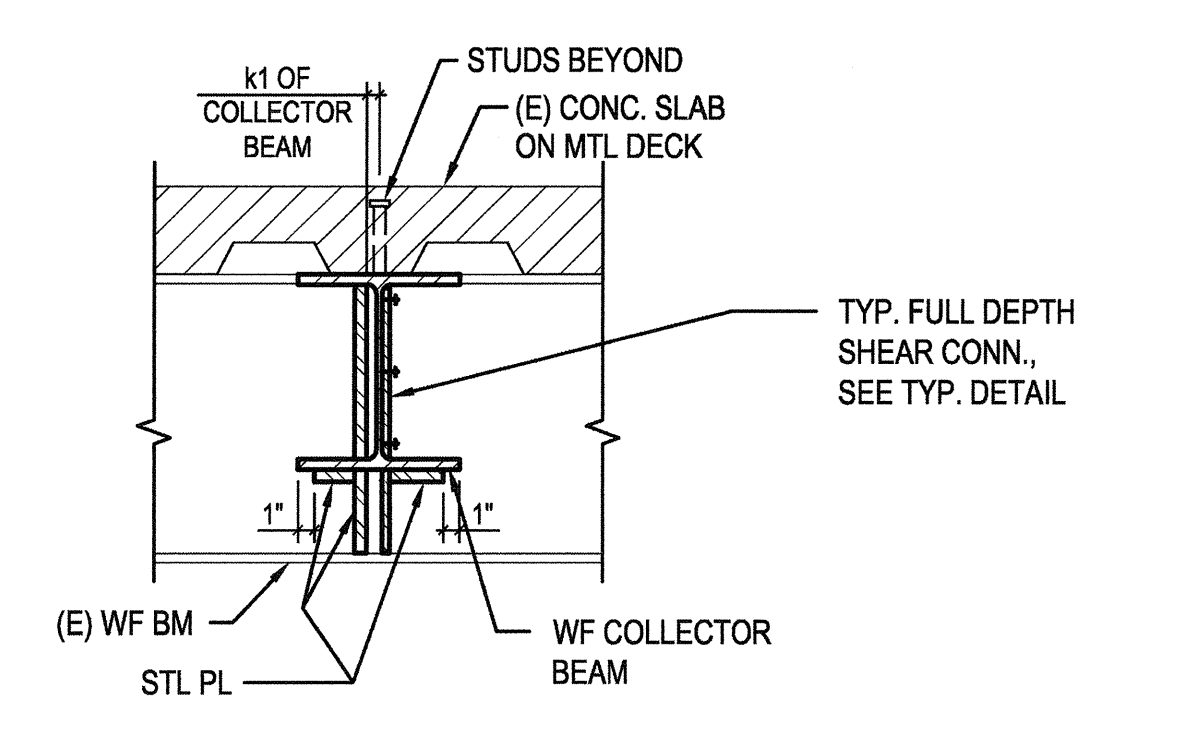


NOTES:
1. SEE 5/SS531 FOR COLLECTOR SCHEDULE.
2. THIS DETAIL OCCURS AT EACH END OF EACH COLLECTOR MEMBER, UNLESS OTHERWISE NOTED. EACH COLLECTOR MEMBER IS DESIGNATED ON PLAN WITH 'C'. THIS SYMBOL CORRESPONDS TO THE COLLECTOR DESIGNATIONS IN SCHEDULE 5/SS531.

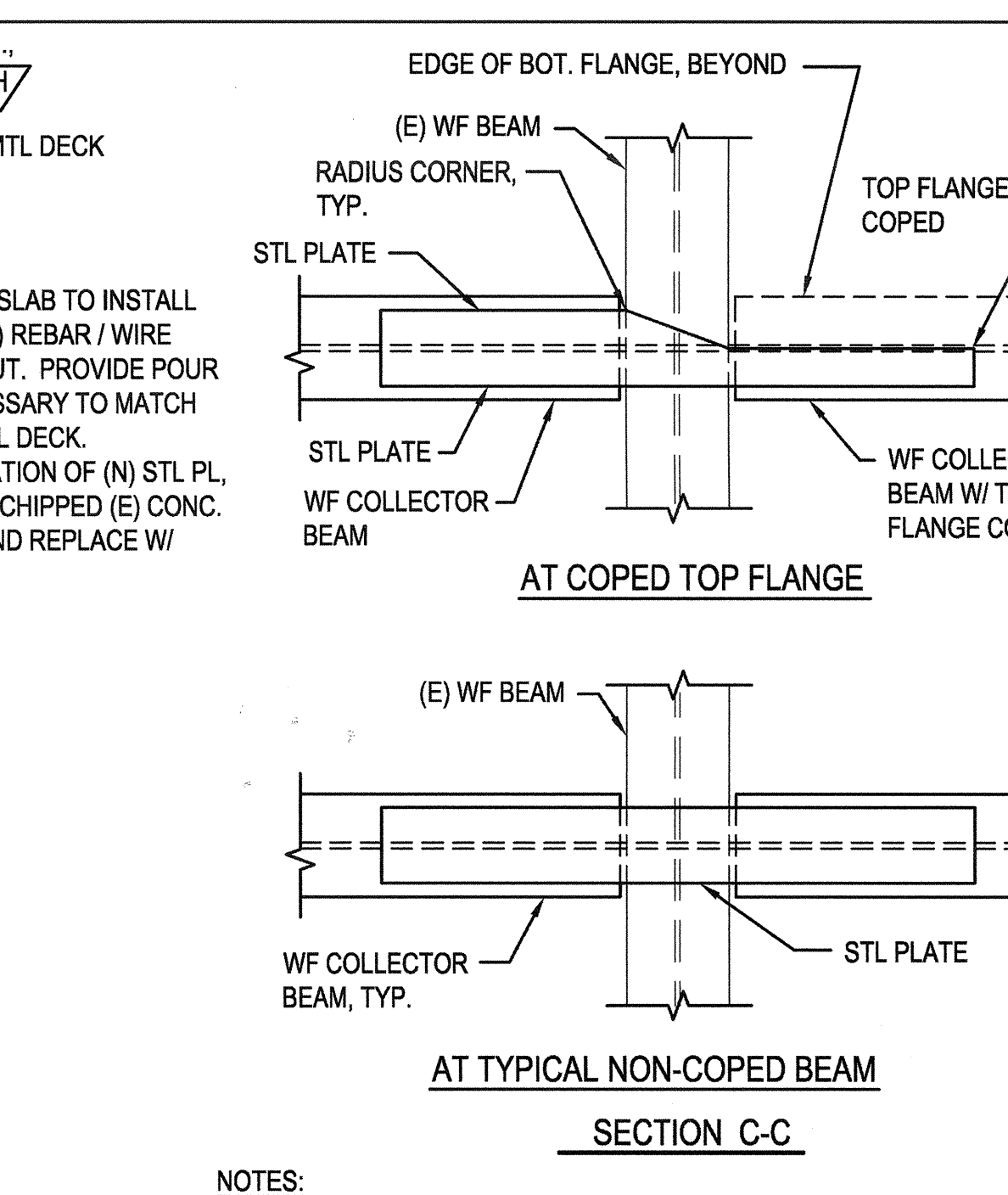
14 COLLECTOR TO (E) BEAM CONNECTION
N.T.S.



15 SUPPLEMENTAL STRENGTHENING AT COLLECTOR CONNECTION
N.T.S.



NOTES:
1. SEE 5/SS531 FOR COLLECTOR SCHEDULE.
2. THIS DETAIL OCCURS AT EACH END OF EACH COLLECTOR MEMBER, UNLESS OTHERWISE NOTED. EACH COLLECTOR MEMBER IS DESIGNATED ON PLAN WITH 'C'. THIS SYMBOL CORRESPONDS TO THE COLLECTOR DESIGNATIONS IN SCHEDULE 5/SS531.

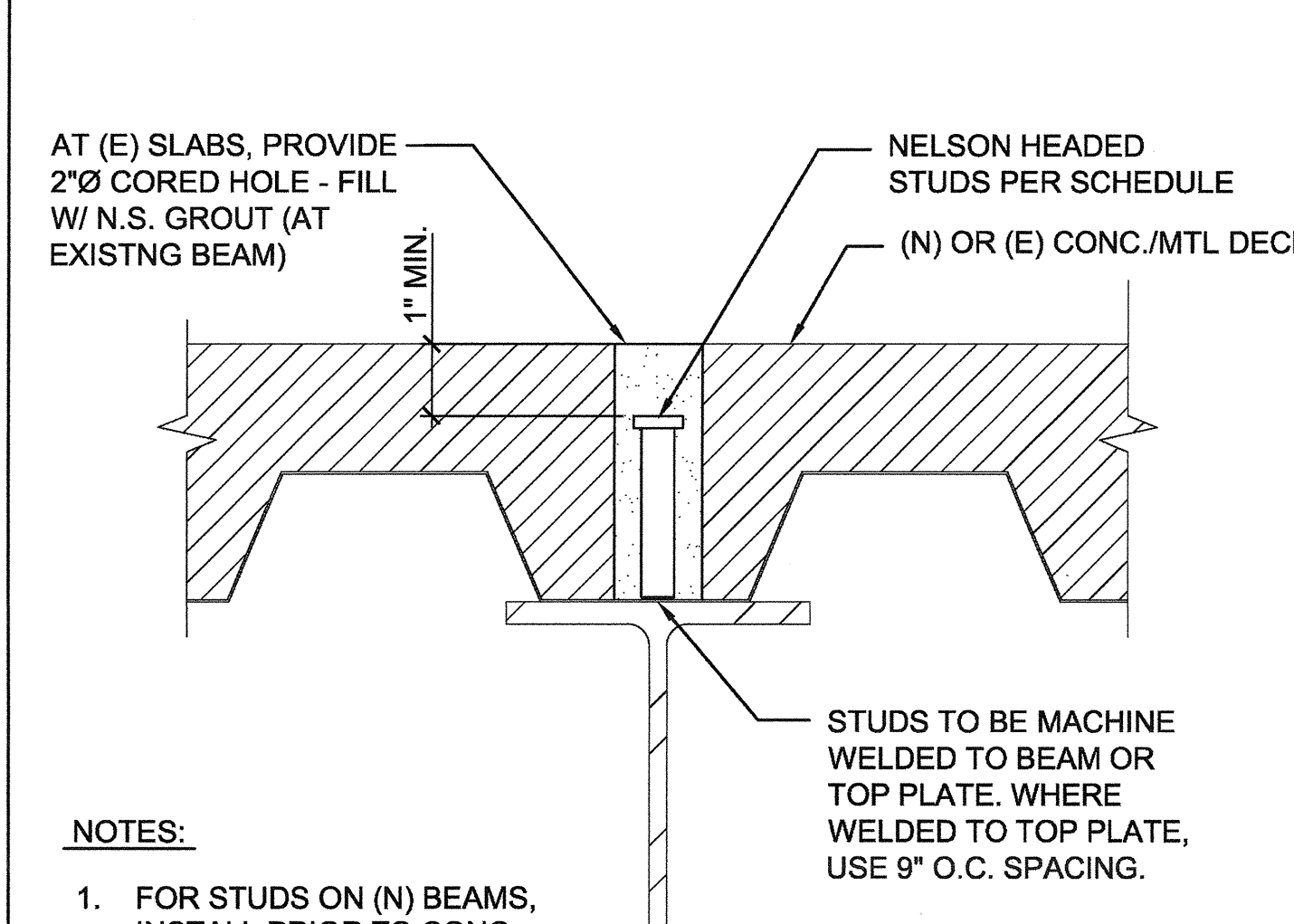


NOTES:
1. SEE 14/ FOR INFO NOT SHOWN.
2. SEE 5/SS531 FOR COLLECTOR SCHEDULE.

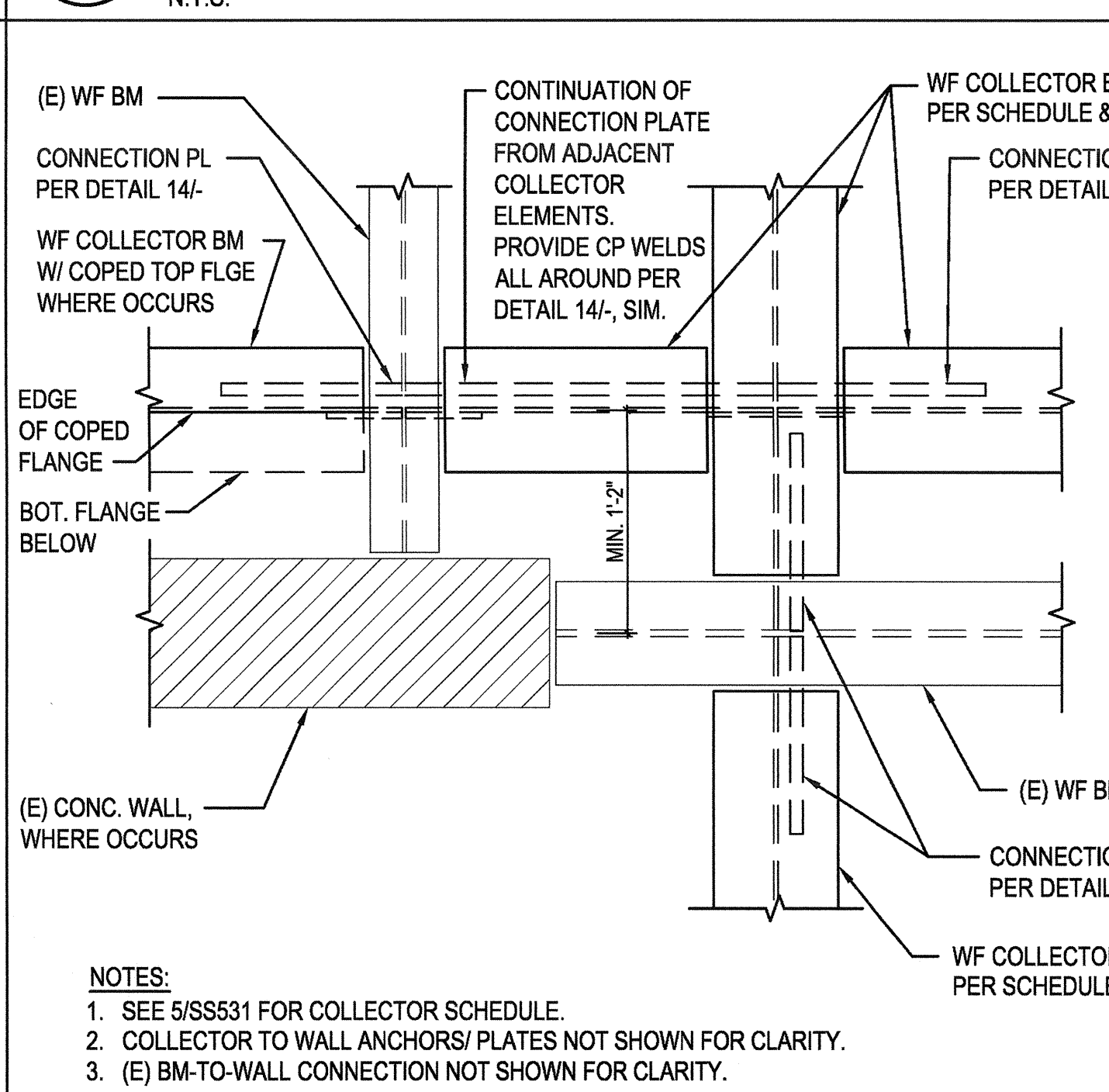
ARCHITECT/ENGINEERS:

HMC Architects

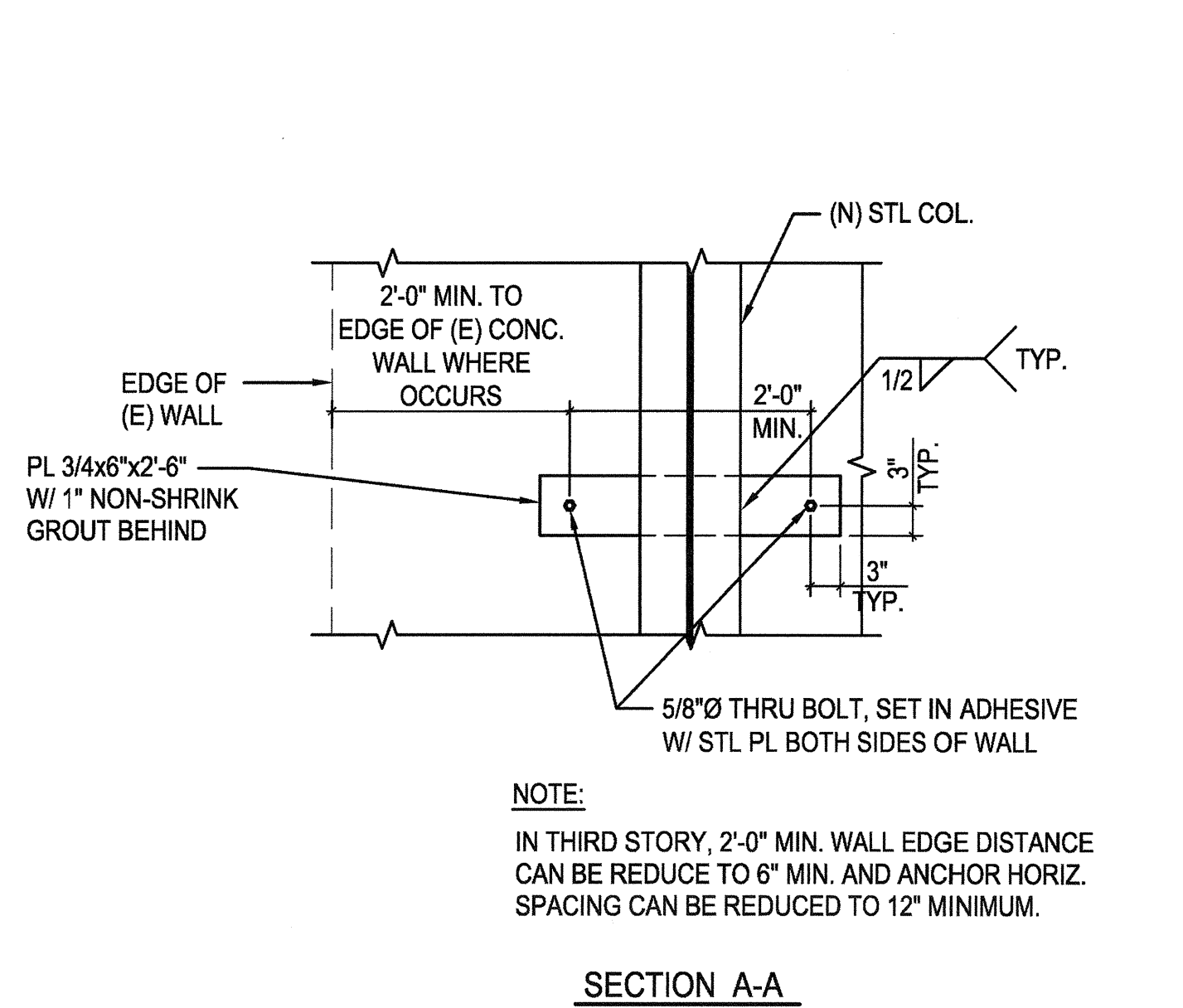
1827 E. Fir Avenue, Studio 103 / Fresno, CA 93720
T 559 322 2444 / www.hmcarchitects.com



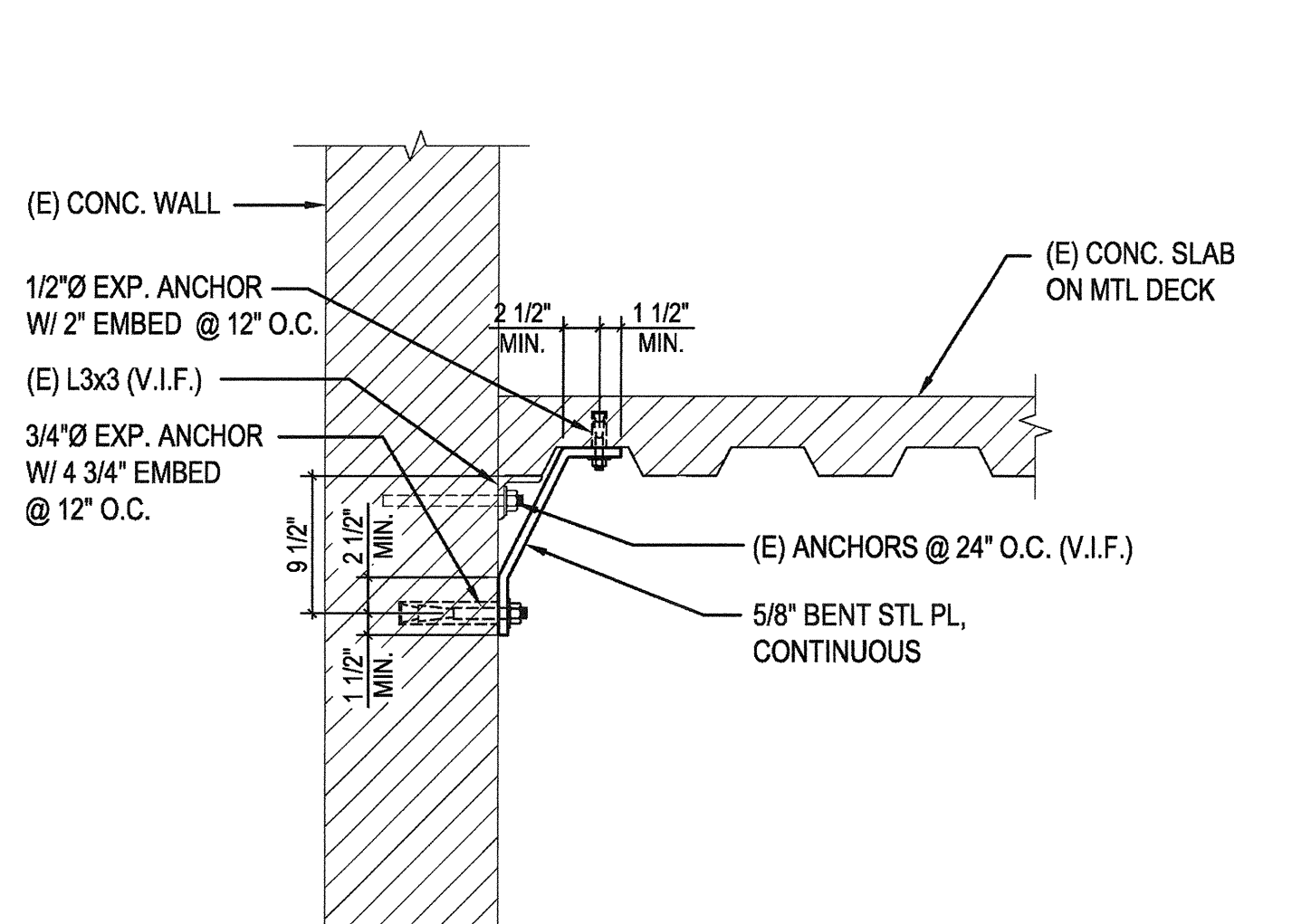
NOTES:
1. FOR STUDS ON (N) BEAMS, INSTALL PRIOR TO CONC. SLAB INSTALLATION.



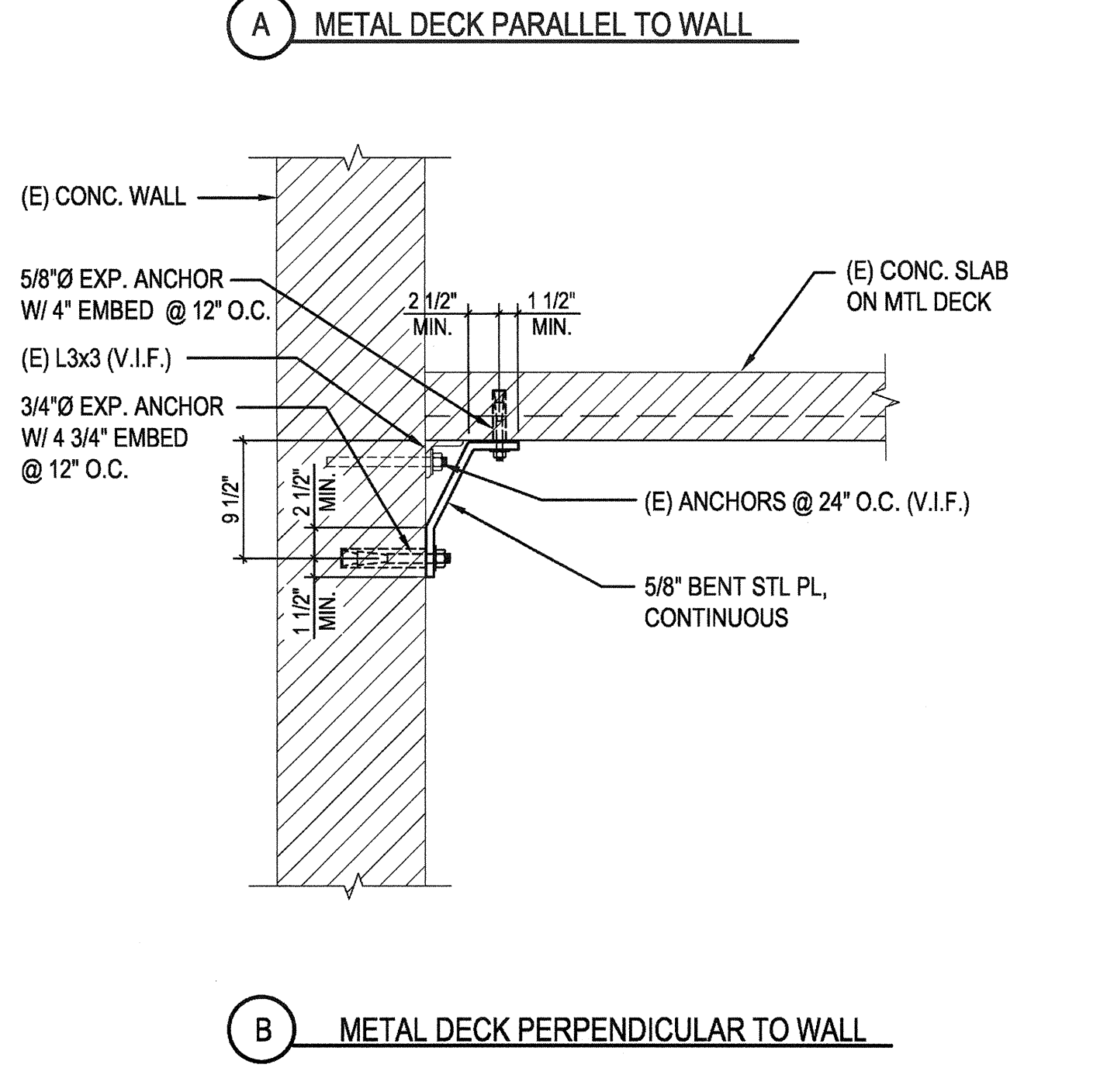
6 COLLECTOR INTERSECTION
N.T.S.



3 COLUMN CONNECTION TO (E) WALL
N.T.S.



NOTES:
1. SEE 5/SS531 FOR COLLECTOR SCHEDULE.
2. COLLECTOR TO WALL ANCHORS/ PLATES NOT SHOWN FOR CLARITY.
3. (E) BM-TO-WALL CONNECTION NOT SHOWN FOR CLARITY.



3 ENHANCED SLAB-TO-WALL CONNECTION
N.T.S.

CONSULTANTS:

Degenkolb

DEGENKOLB ENGINEERS
235 Montgomery Street, Suite 500
San Francisco, CA 94104
415.392.6952 Phone
415.981.3157 Fax
www.degenkolb.com
90584020.00



Drawing Title

STEEL DETAILS

Approved Project Director

Project Title

BUILDING 24
SEISMIC CORRECTION
AND ADDITION

Location

VAMC FRESNO, CA

Date

January 31, 2012

Checked

WG

Drawn

MAM/KM

Project Number

570-215

Building Number

24

Drawing Number

SS513

Dwg. 32 of 80

Office of
Construction
and Facilities
Management

