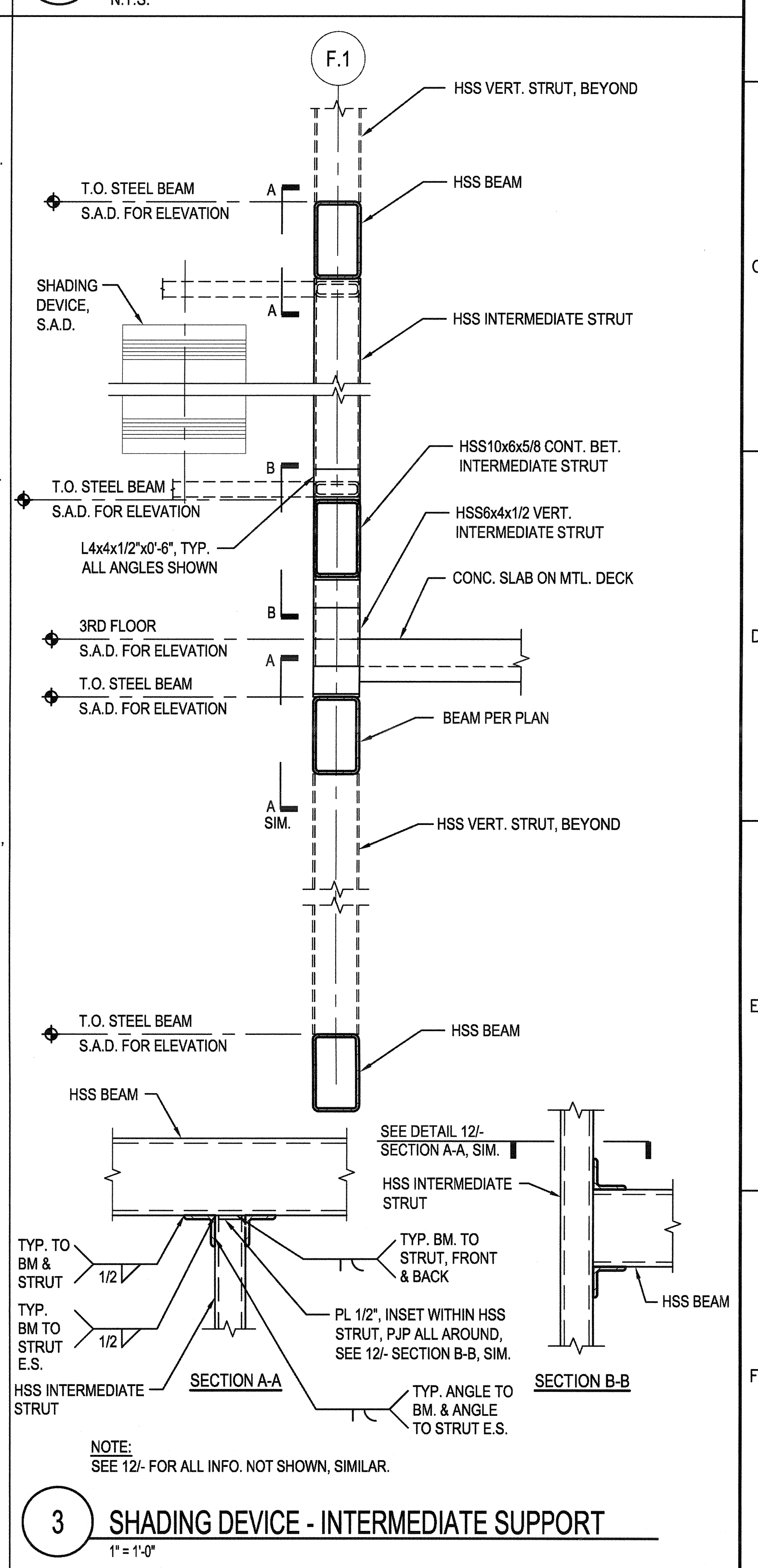
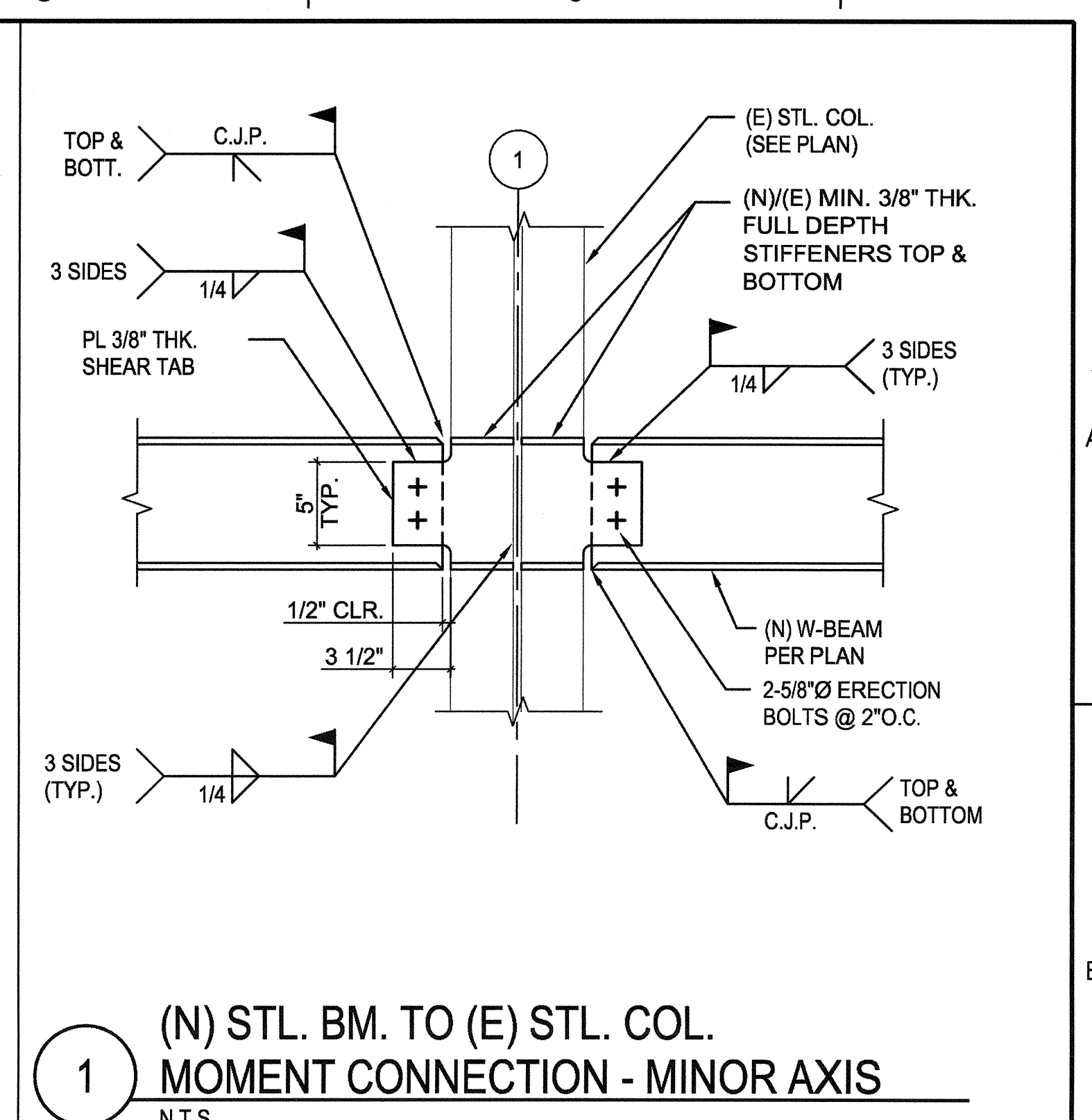
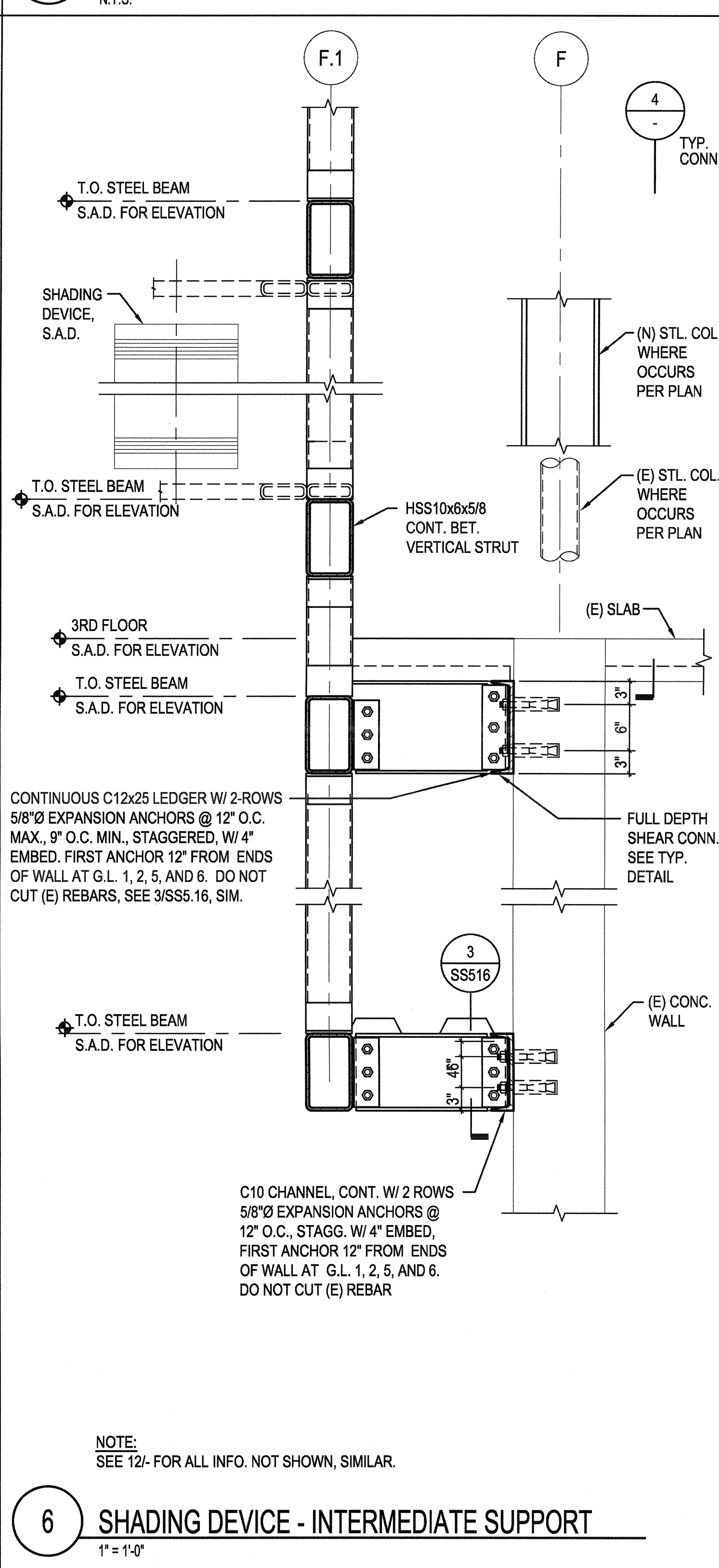
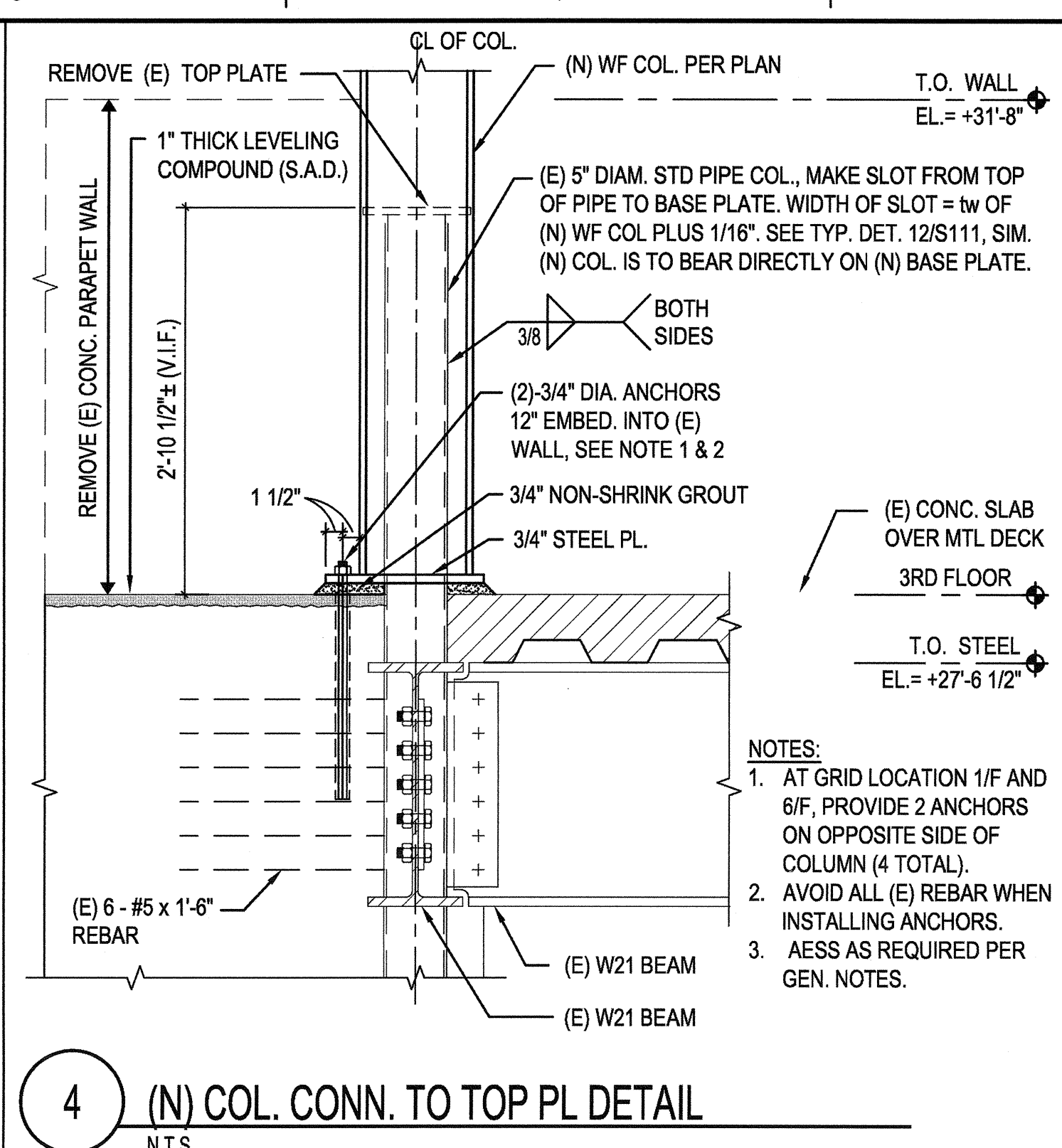
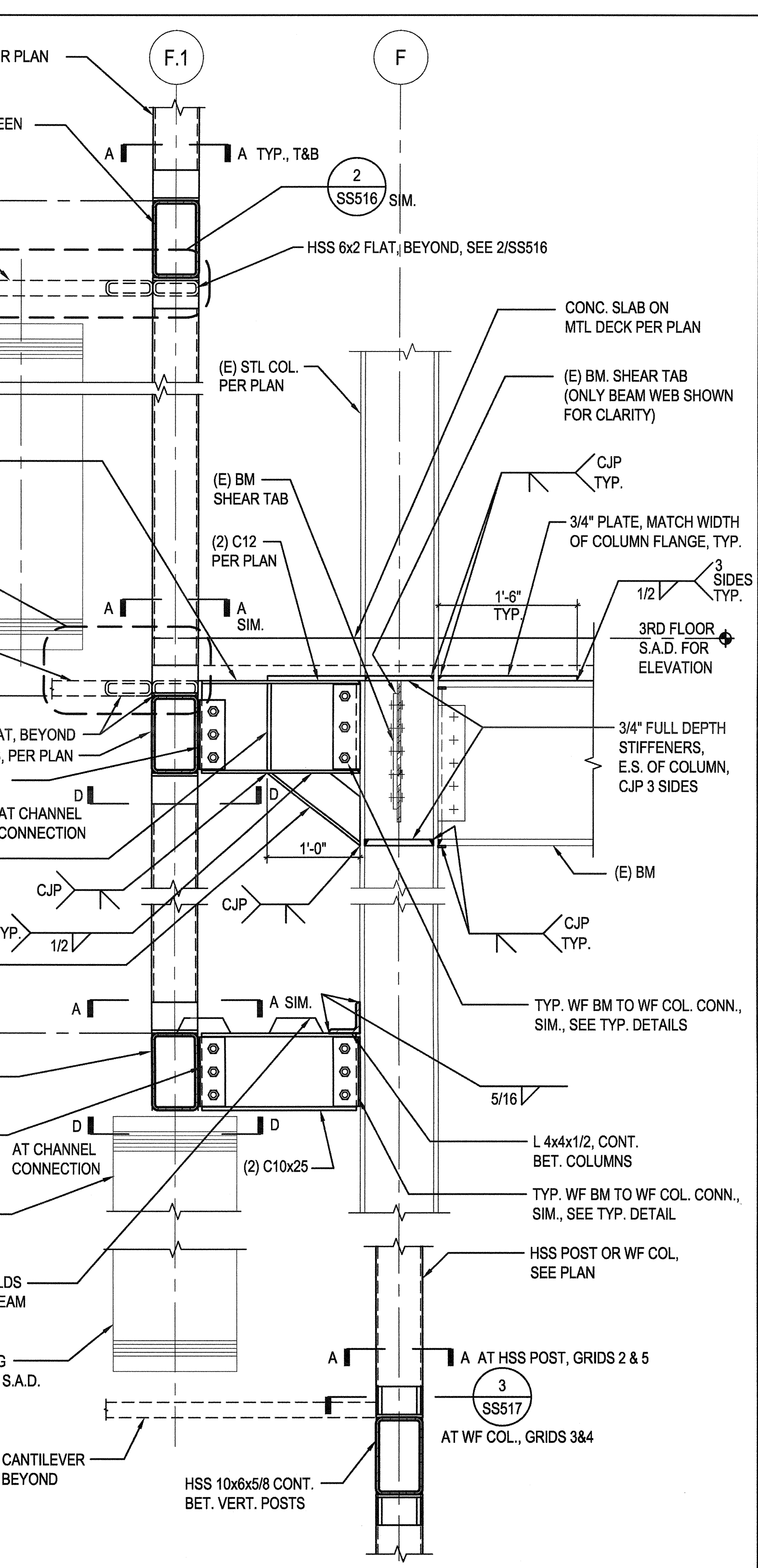
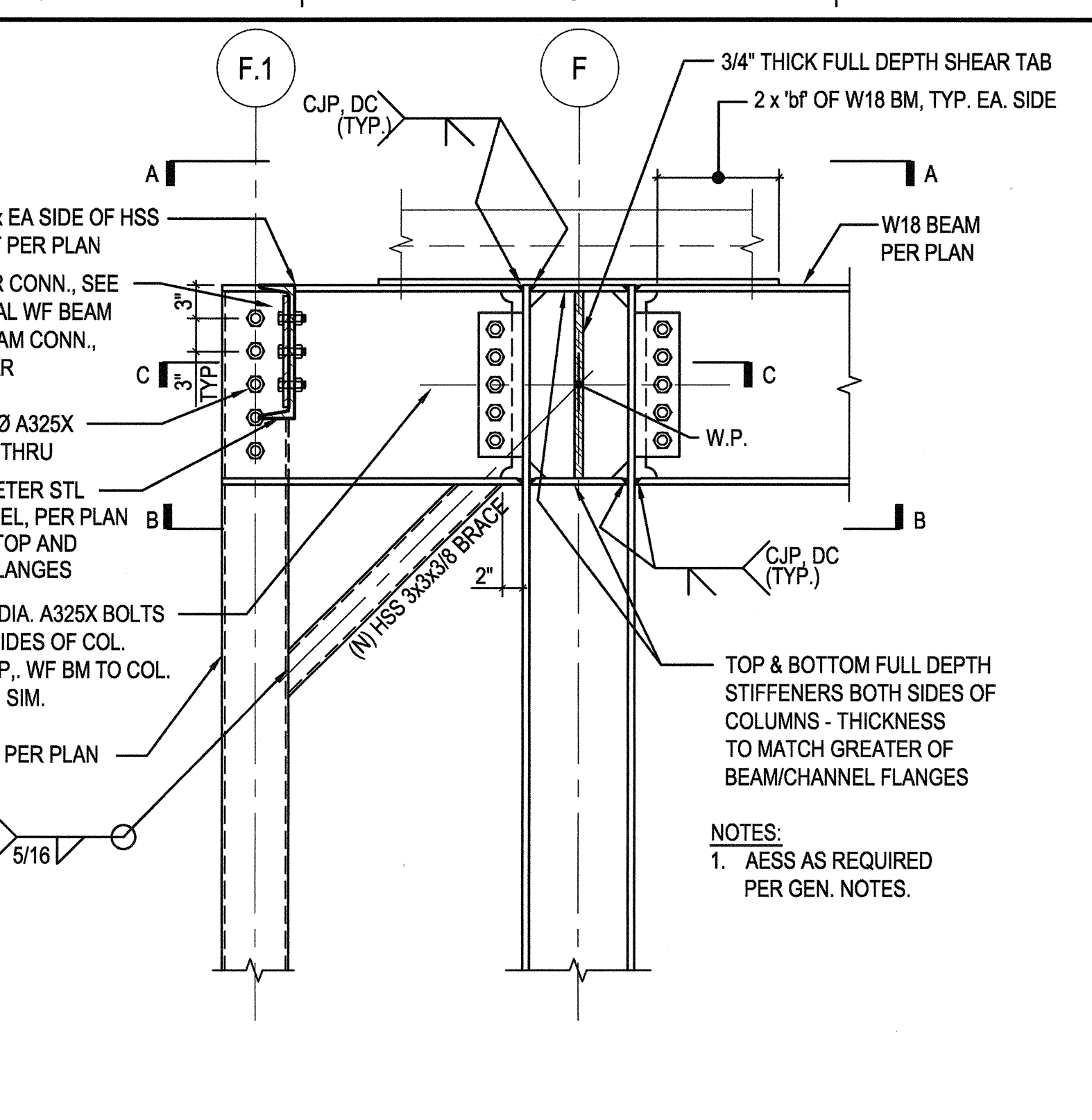
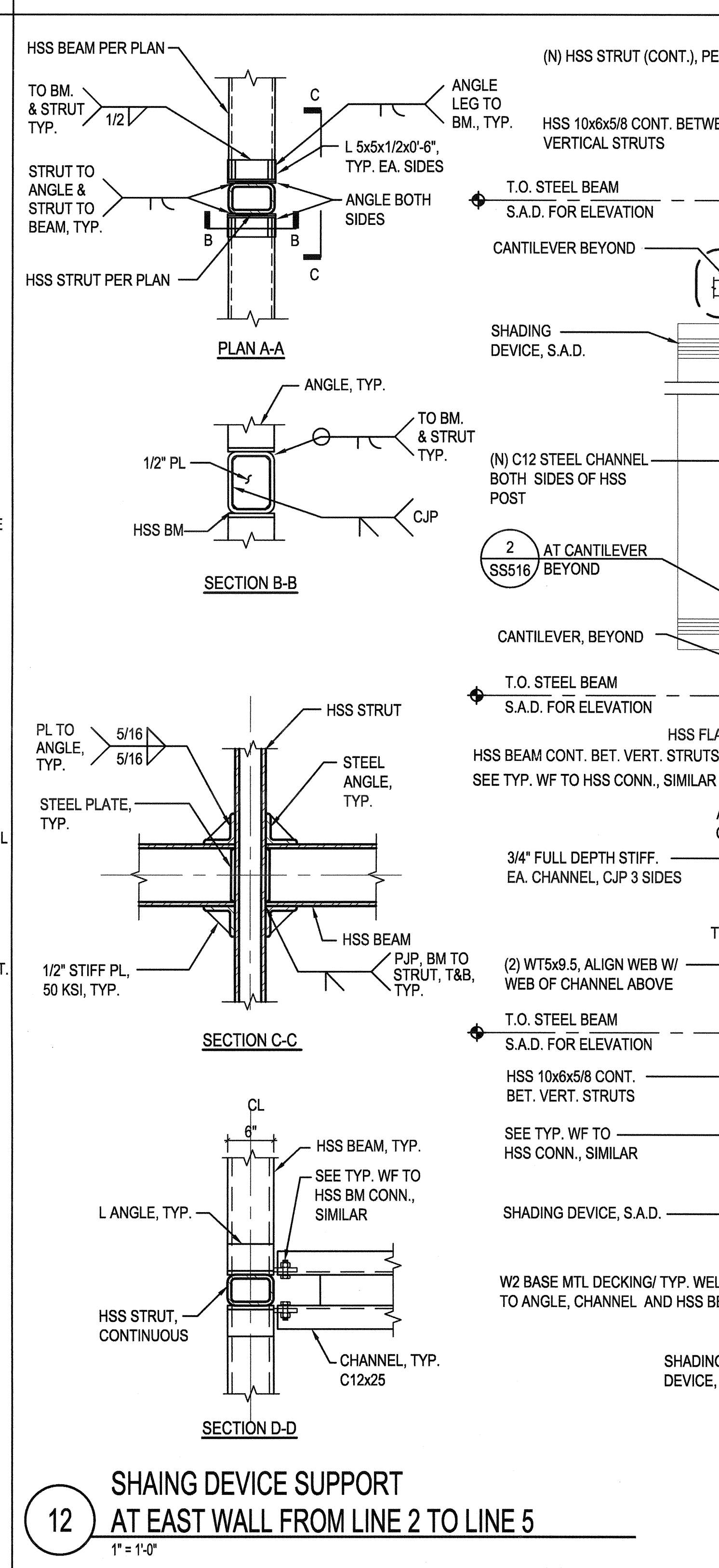
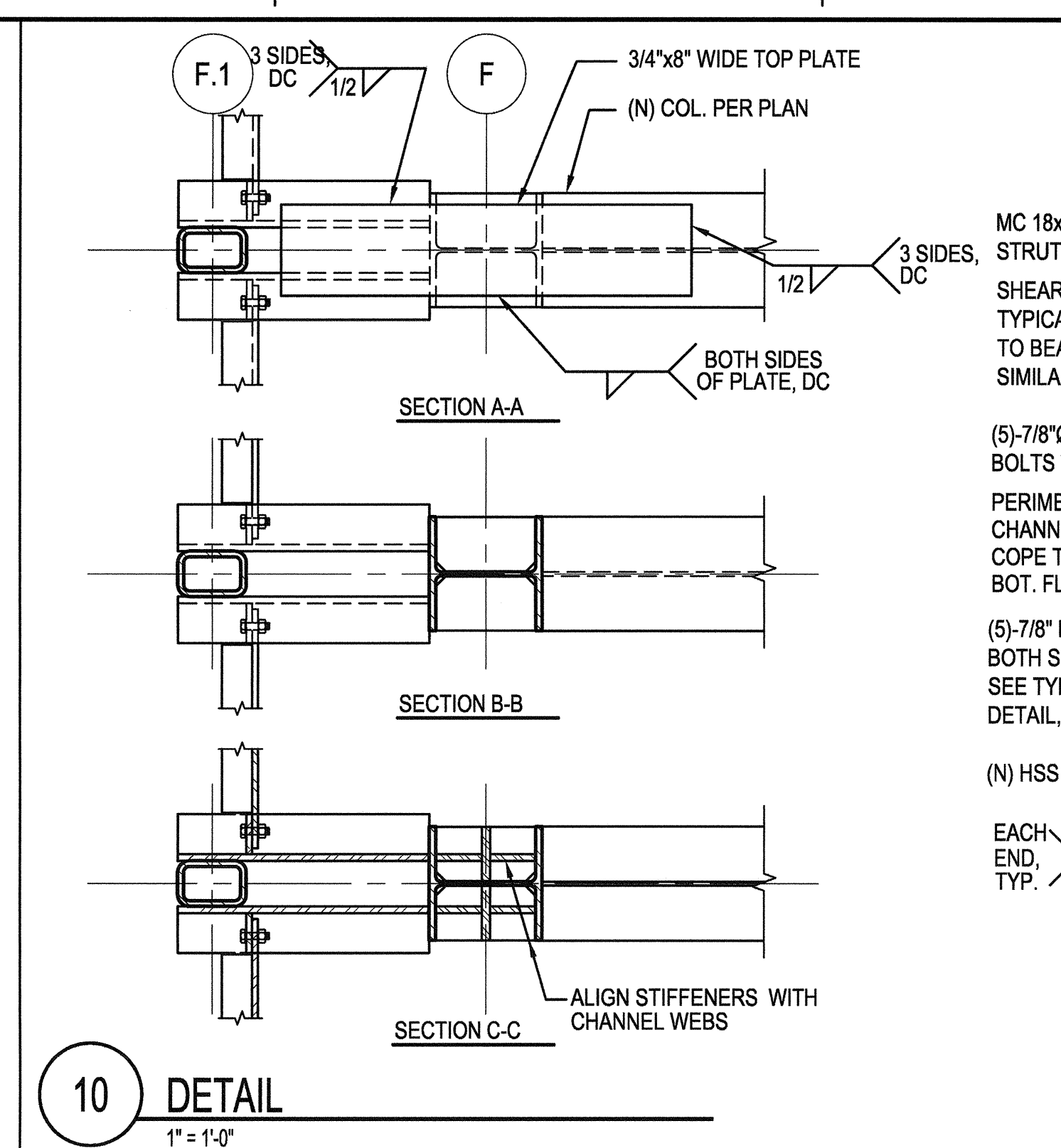
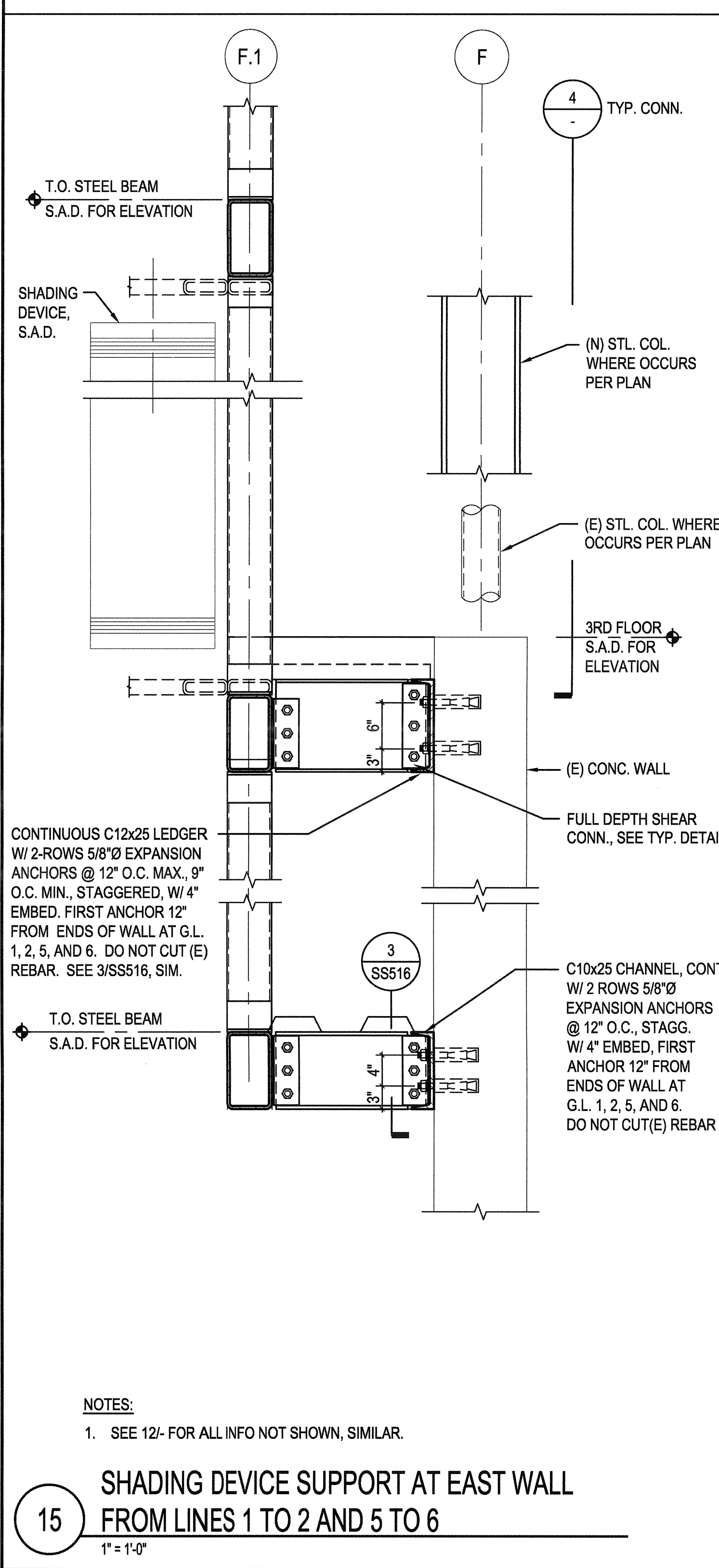
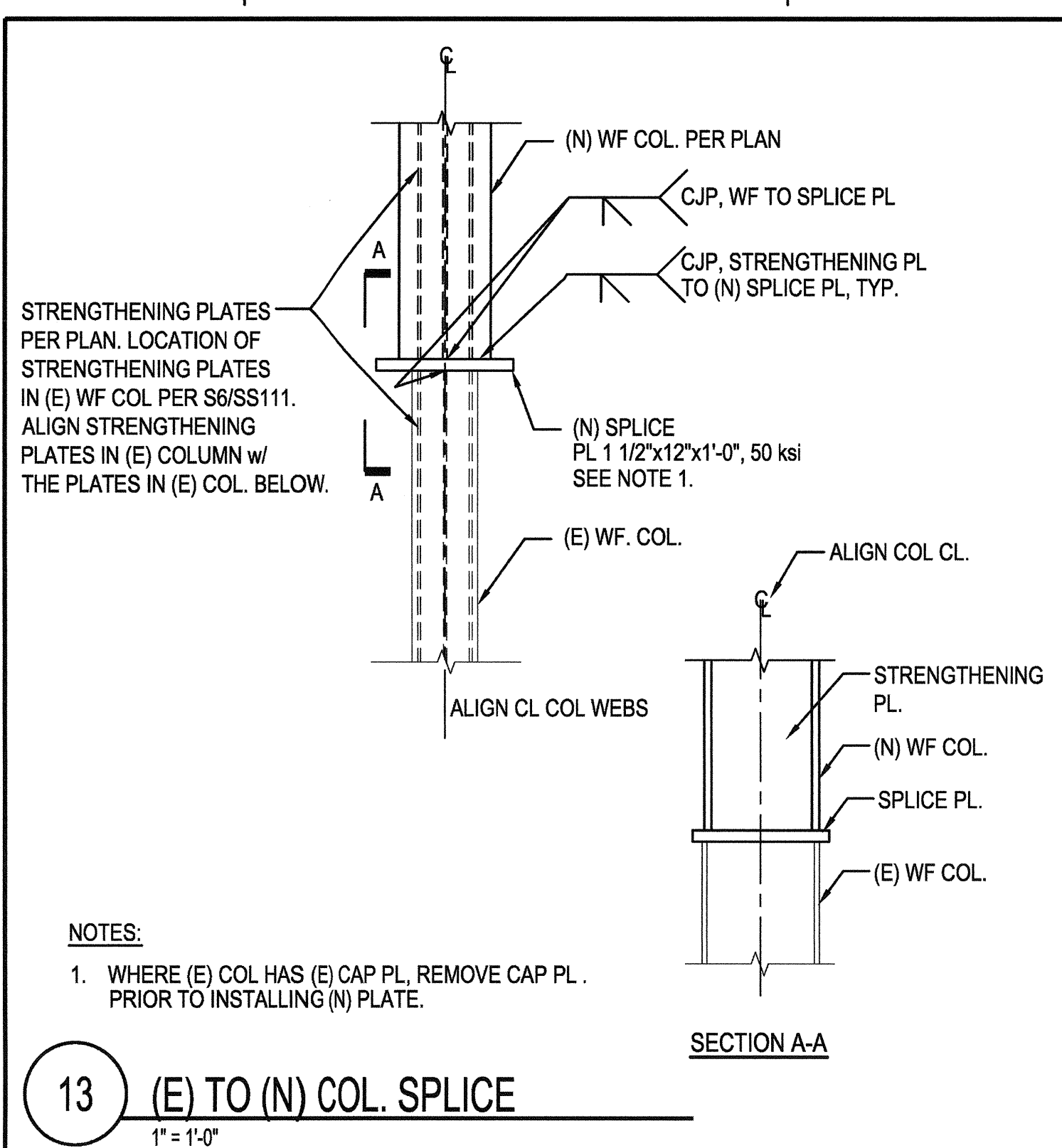


three inches = one foot
one and one half inches = one foot
one inch = one foot
three quarters inch = one foot
one half inch = one foot
one quarter inch = one foot
one eighth inch = one foot
one sixteenth inch = one foot



CONSULTANTS: Degenkolb DEGENKOLB ENGINEERS 235 Montgomery Street, Suite 500 San Francisco, CA 94104 415.392.6922 Phone 415.981.3157 Fax www.degenkolb.com 905840220.00		ARCHITECT/ENGINEERS: HMC Architects 1827 E. Fir Avenue, Studio 103 / Fresno, CA 93720 T 559.322 2444 / www.hmcarchitects.com		Drawing Title STEEL DETAILS Approved Project Director		Project Title BUILDING 24 SEISMIC CORRECTION AND ADDITION Location YAMC FRESNO, CA Date January 31, 2012 Checked WG Drawn MAM/KM		Project Number 570-215 Building Number 24 Drawing Number SS515 Dwg. 34 of 180		Office of Construction and Facilities Management 	
--	--	---	--	--	--	--	--	---	--	---	--