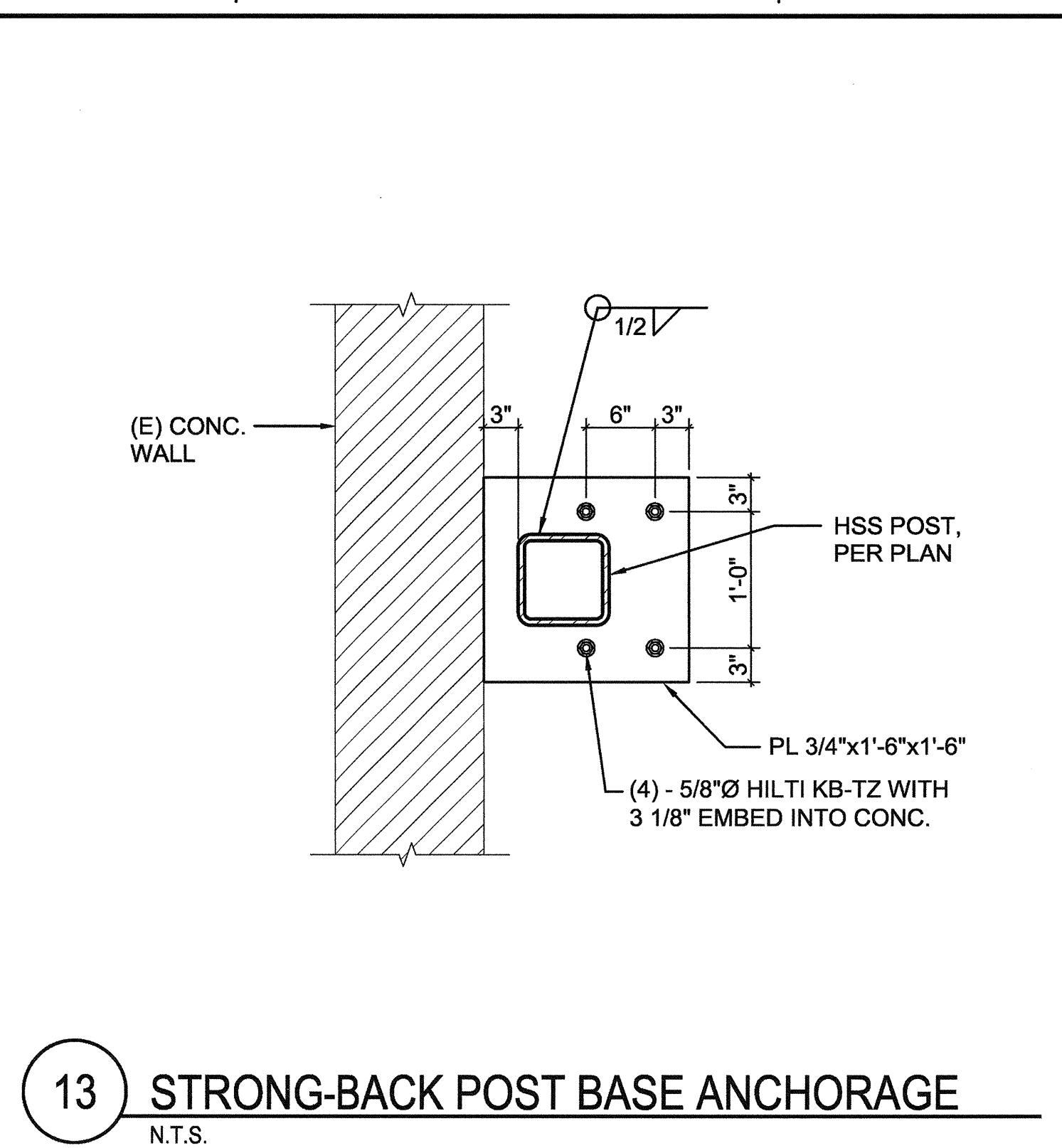
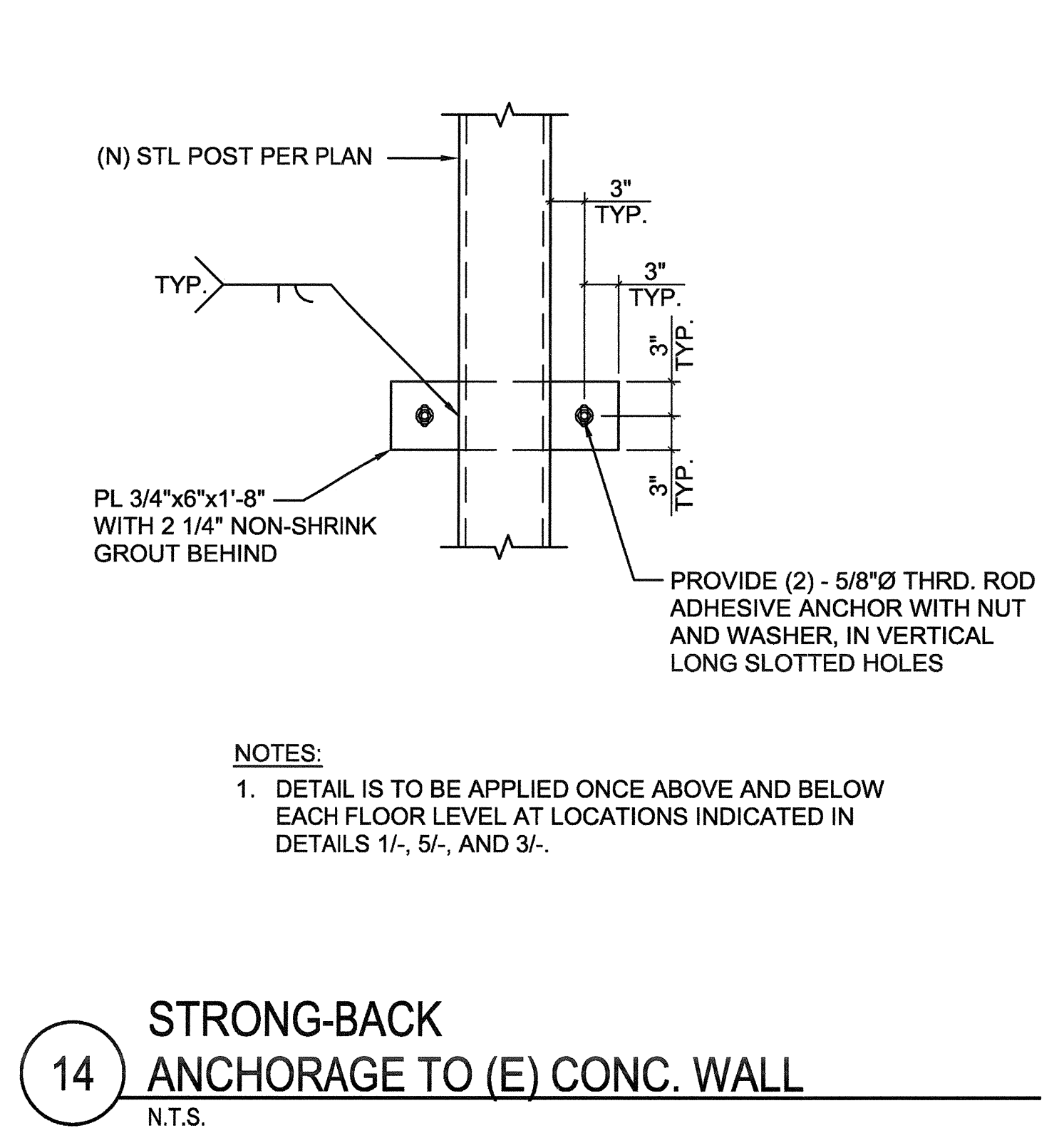


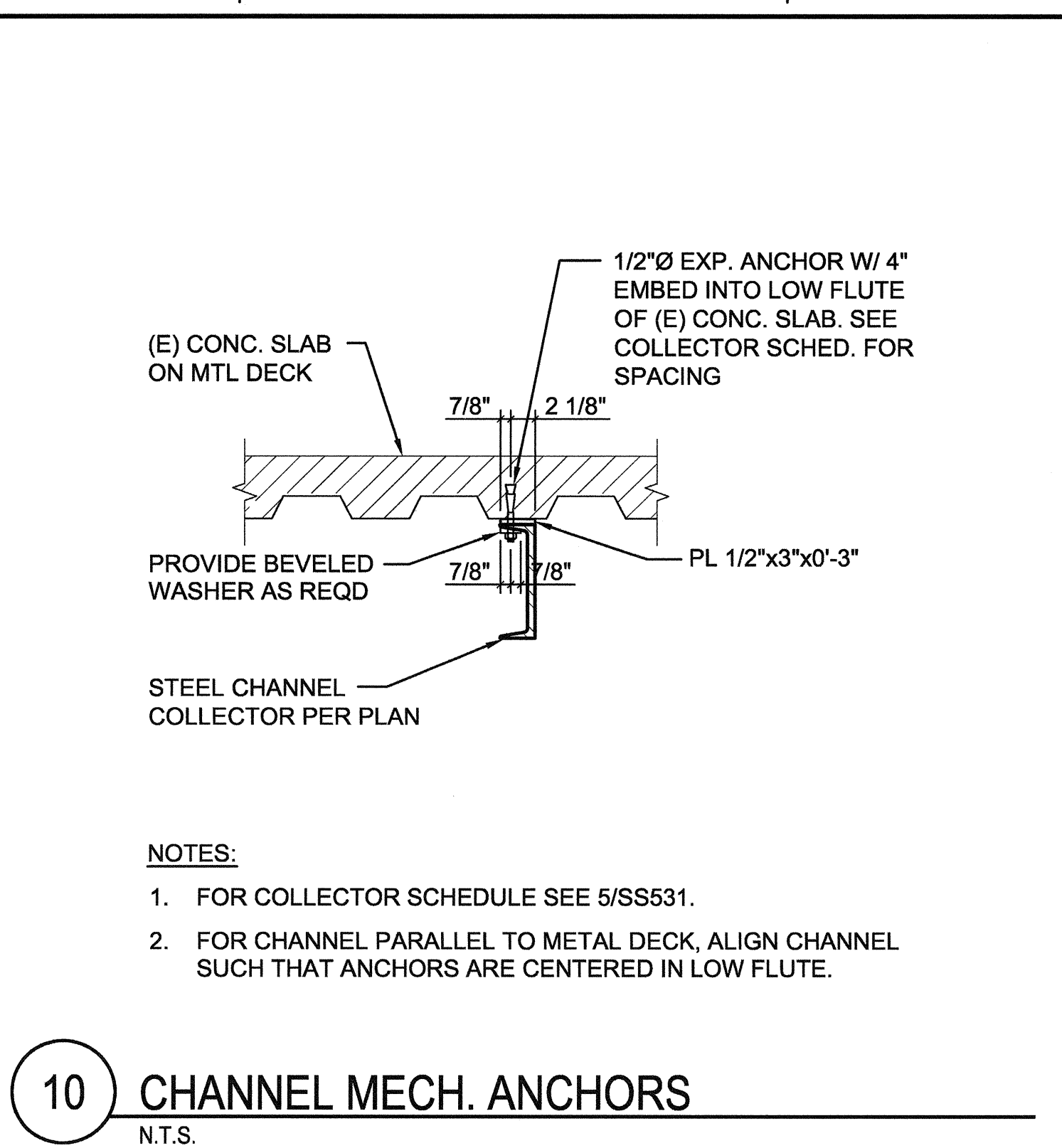
three inches = one foot
one and one half inches = one foot
one inch = one foot
three quarters inch = one foot
one half inch = one foot
one quarter inch = one foot
one eighth inch = one foot
one sixteenth inch = one foot



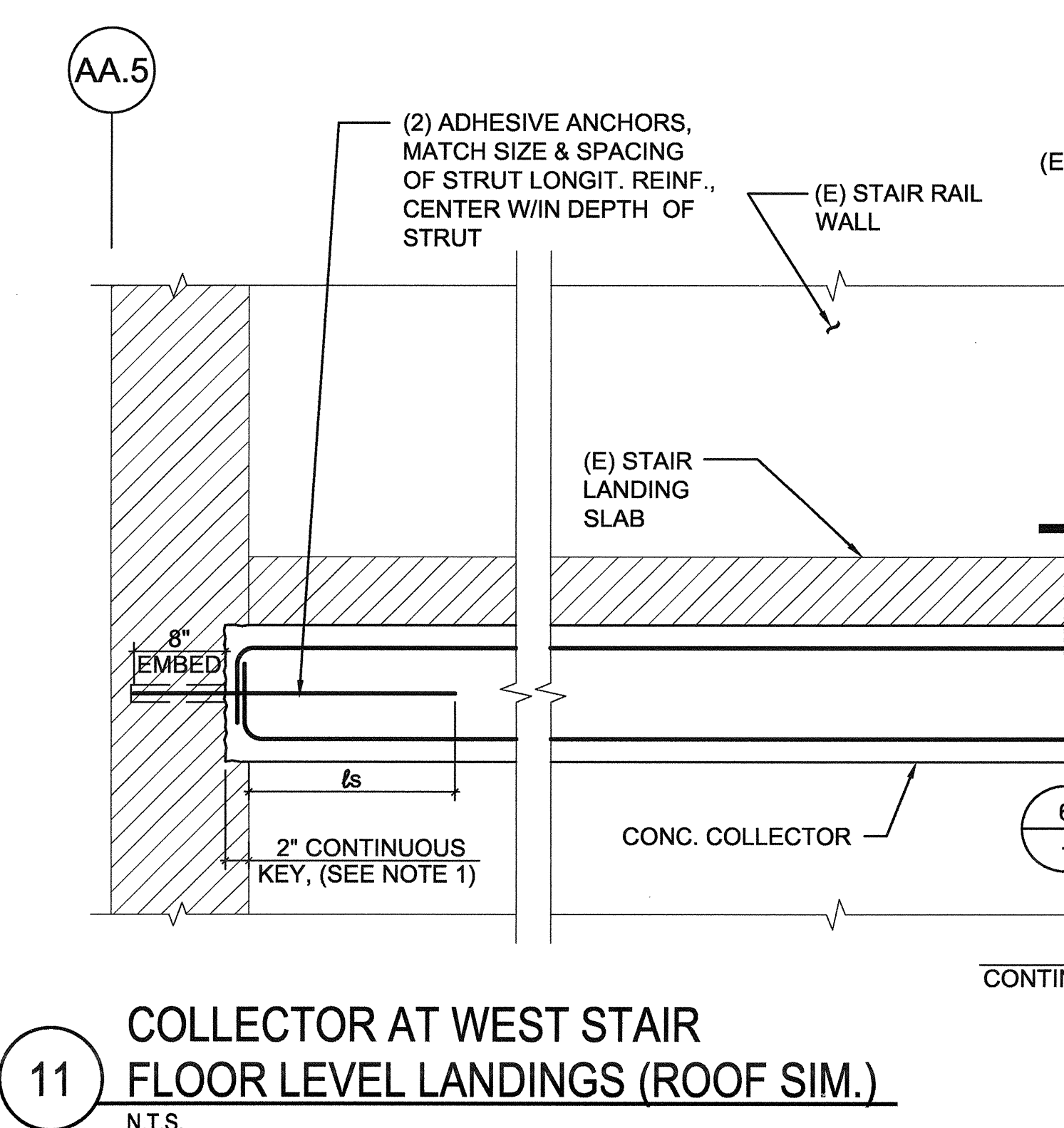
13 STRONG-BACK POST BASE ANCHORAGE
N.T.S.



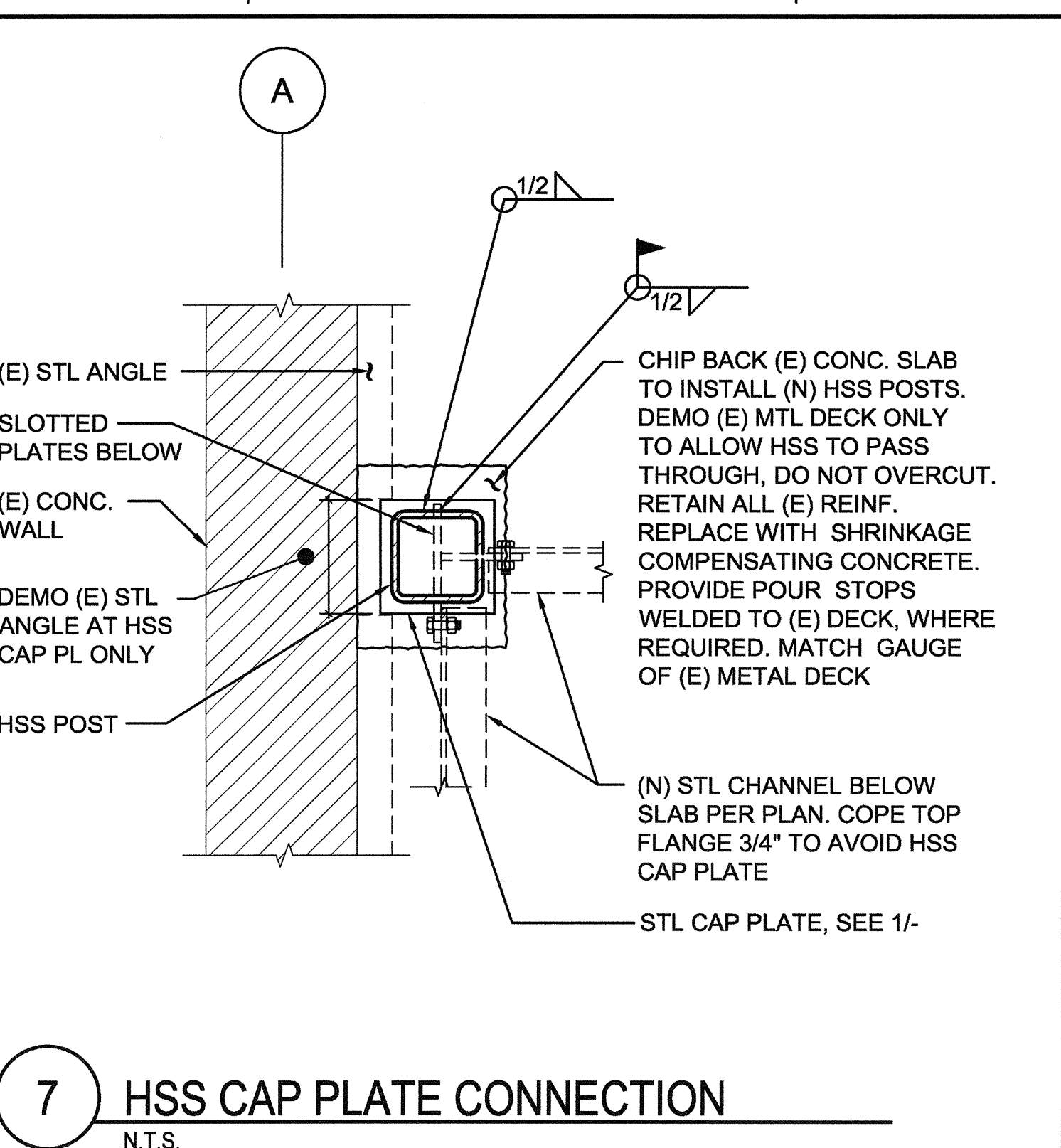
14 STRONG-BACK ANCHORAGE TO (E) CONC. WALL
N.T.S.



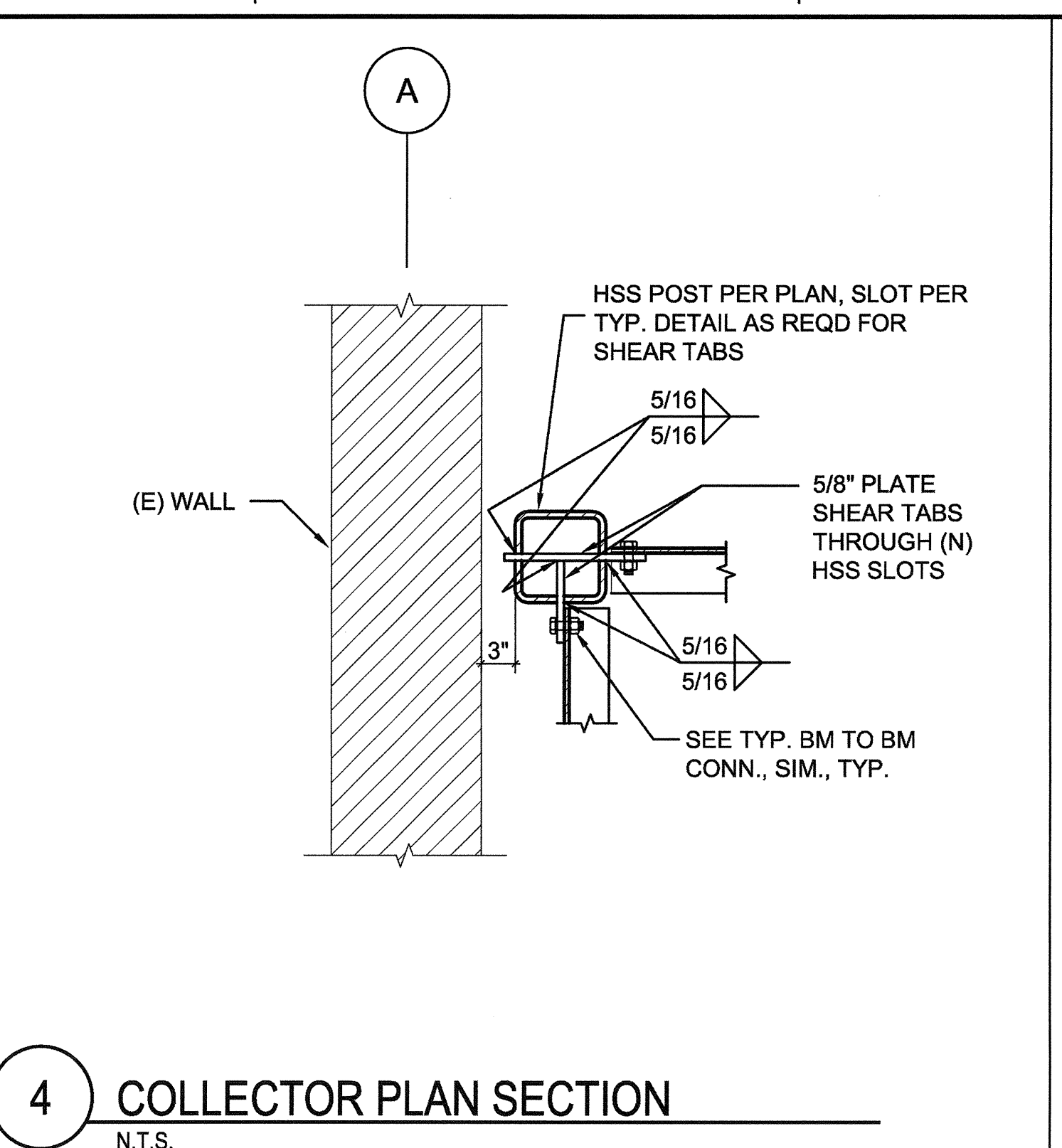
10 CHANNEL MECH. ANCHORS
N.T.S.



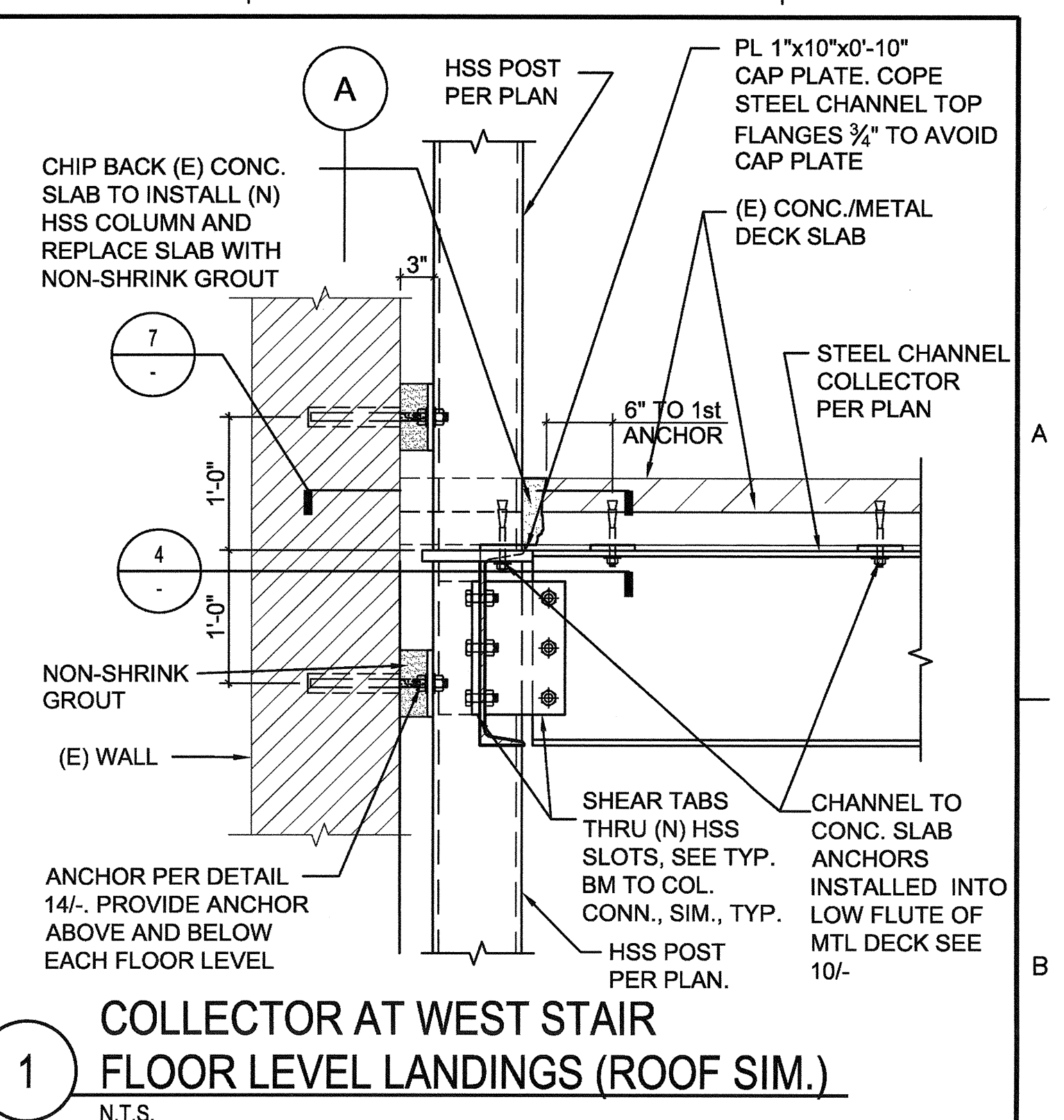
11 COLLECTOR AT WEST STAIR FLOOR LEVEL LANDINGS (ROOF SIM.)
N.T.S.



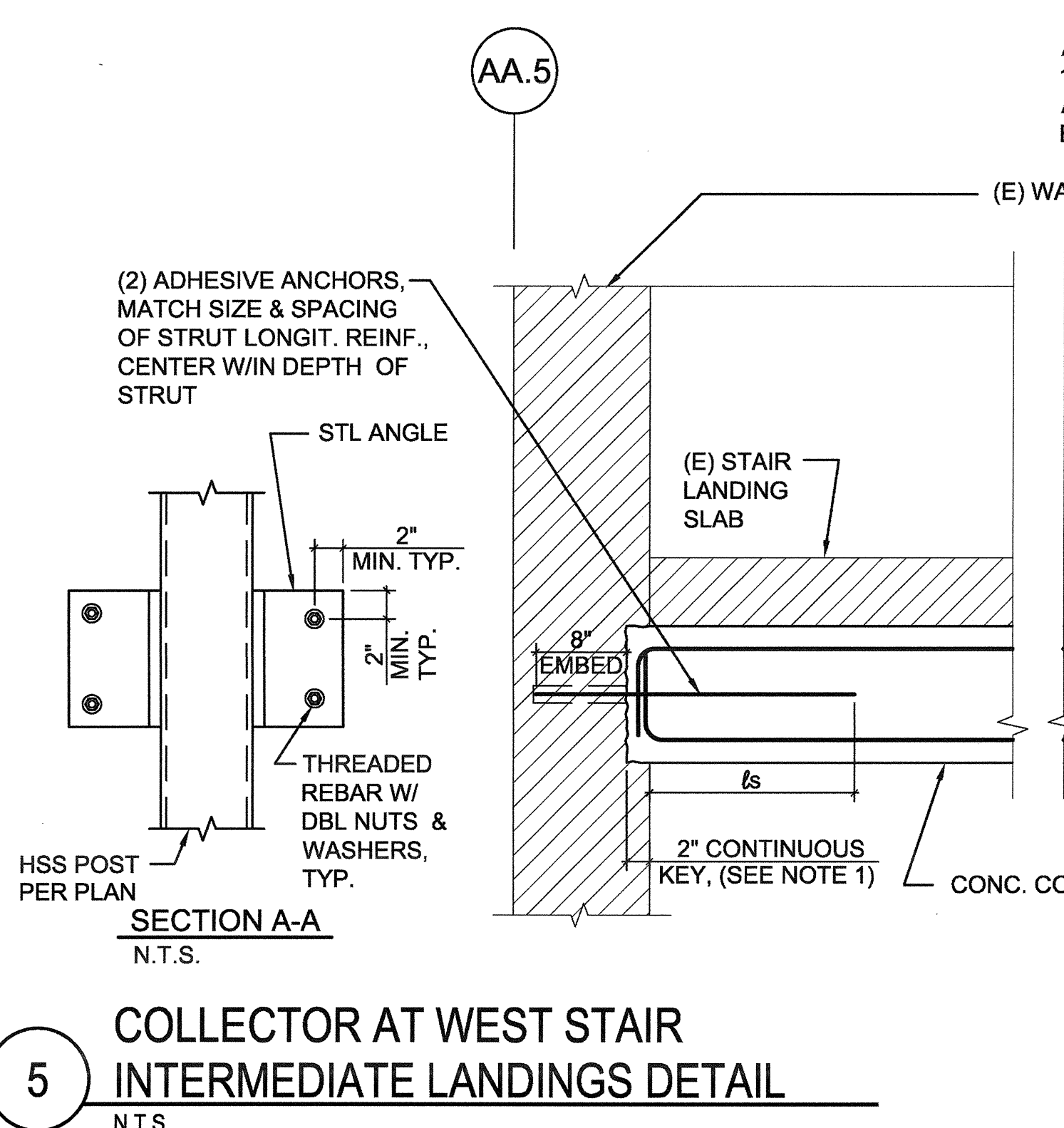
7 HSS CAP PLATE CONNECTION
N.T.S.



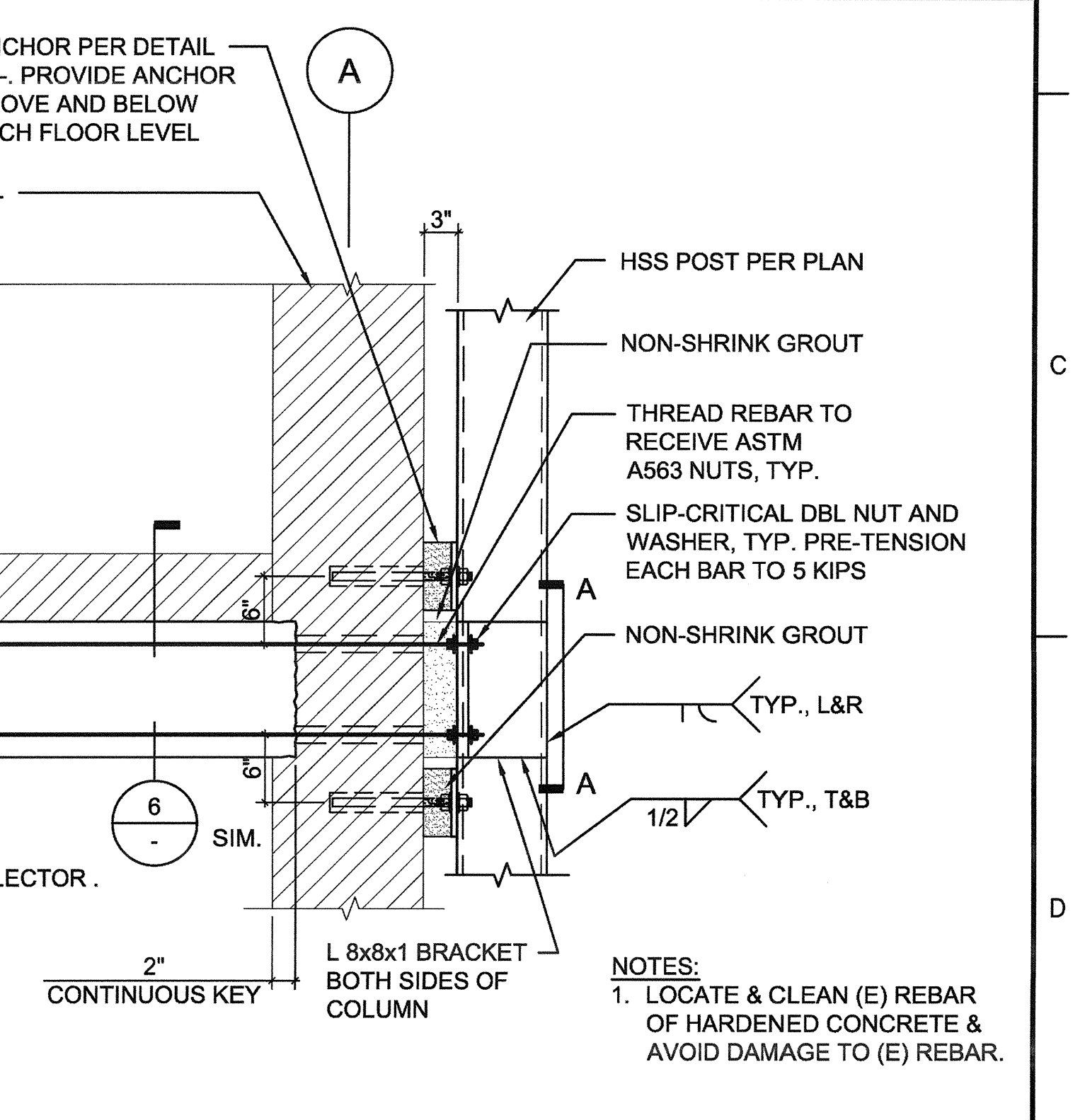
4 COLLECTOR PLAN SECTION
N.T.S.



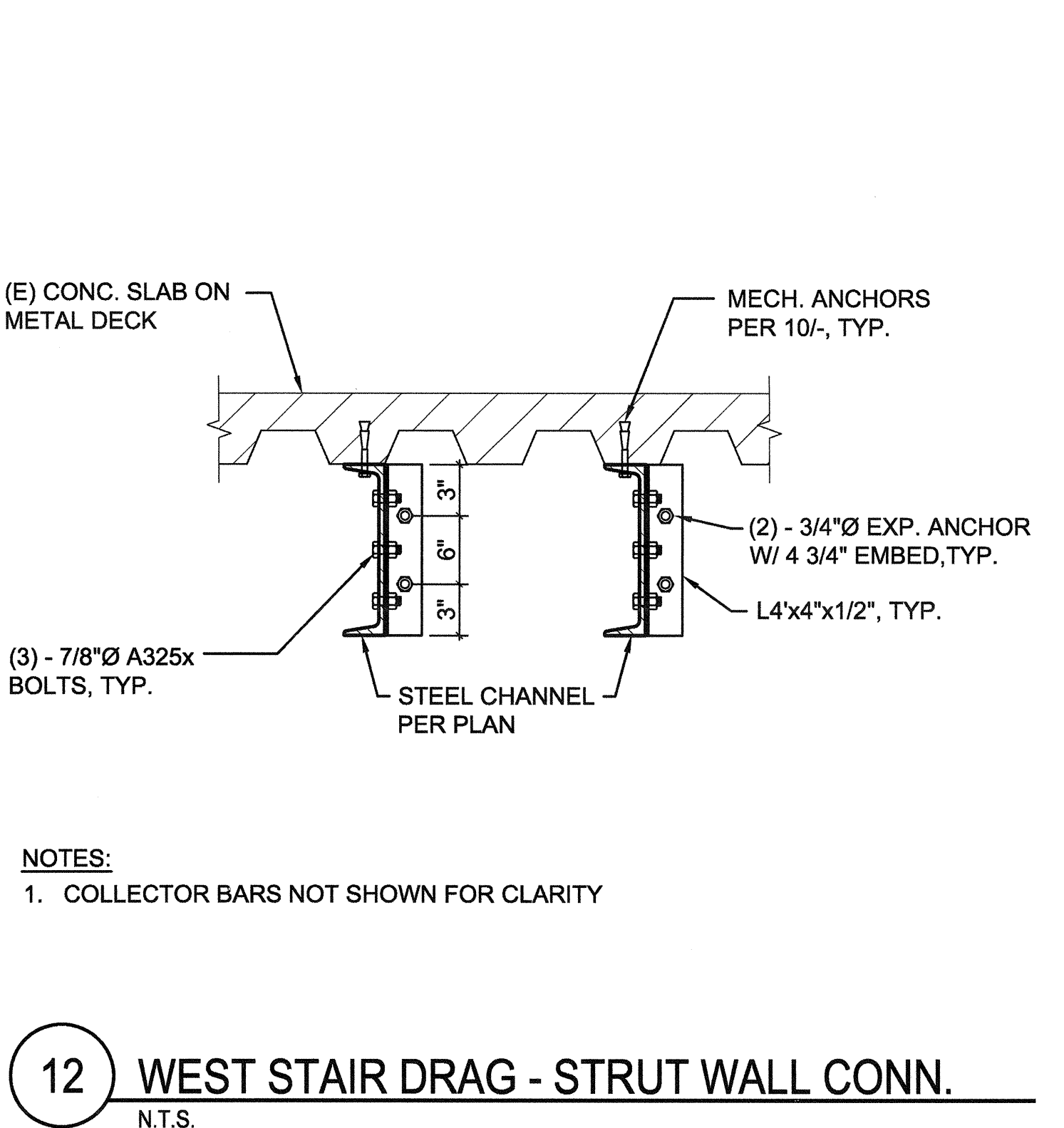
1 COLLECTOR AT WEST STAIR FLOOR LEVEL LANDINGS (ROOF SIM.)
N.T.S.



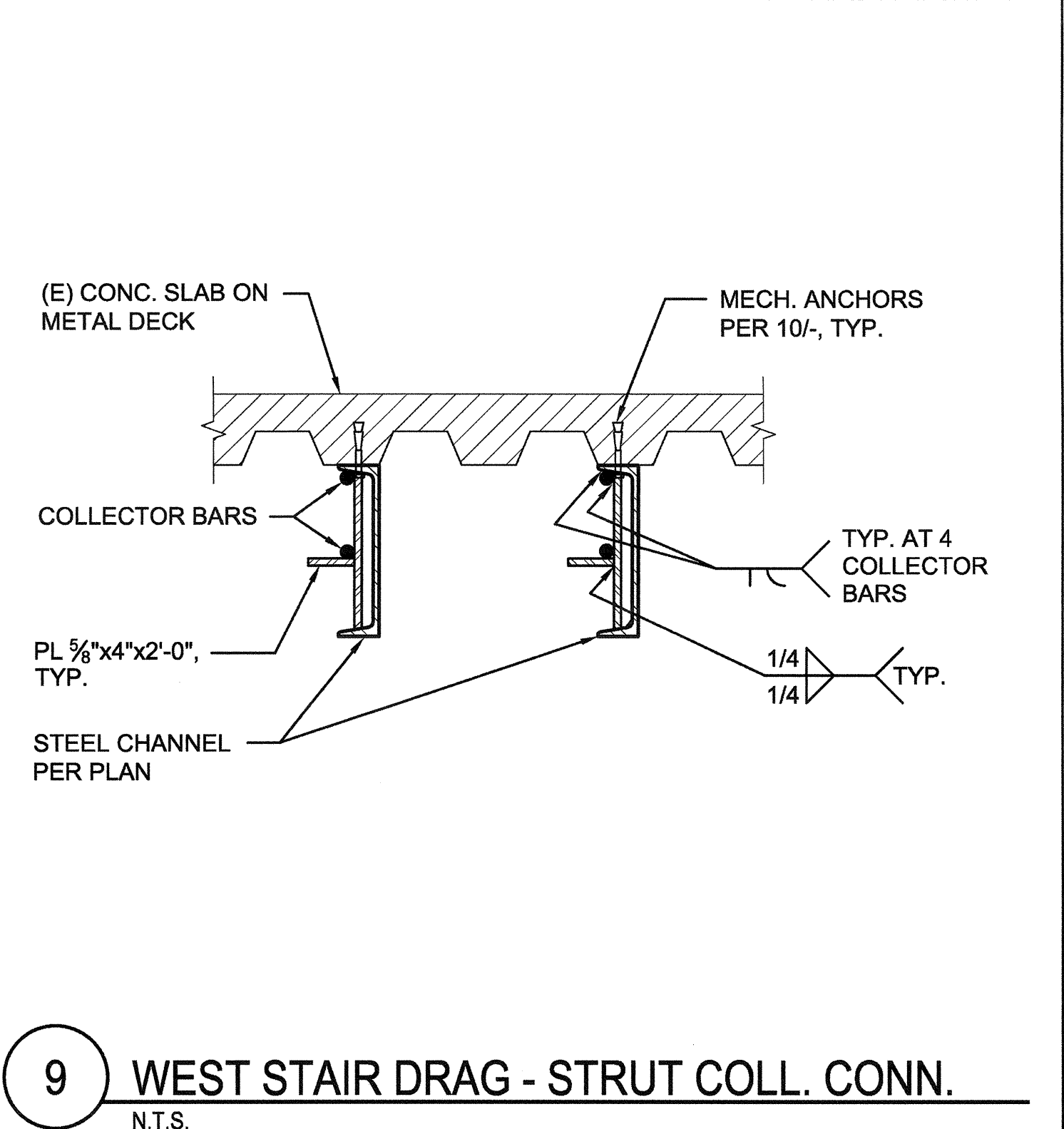
5 COLLECTOR AT WEST STAIR INTERMEDIATE LANDINGS DETAIL
N.T.S.



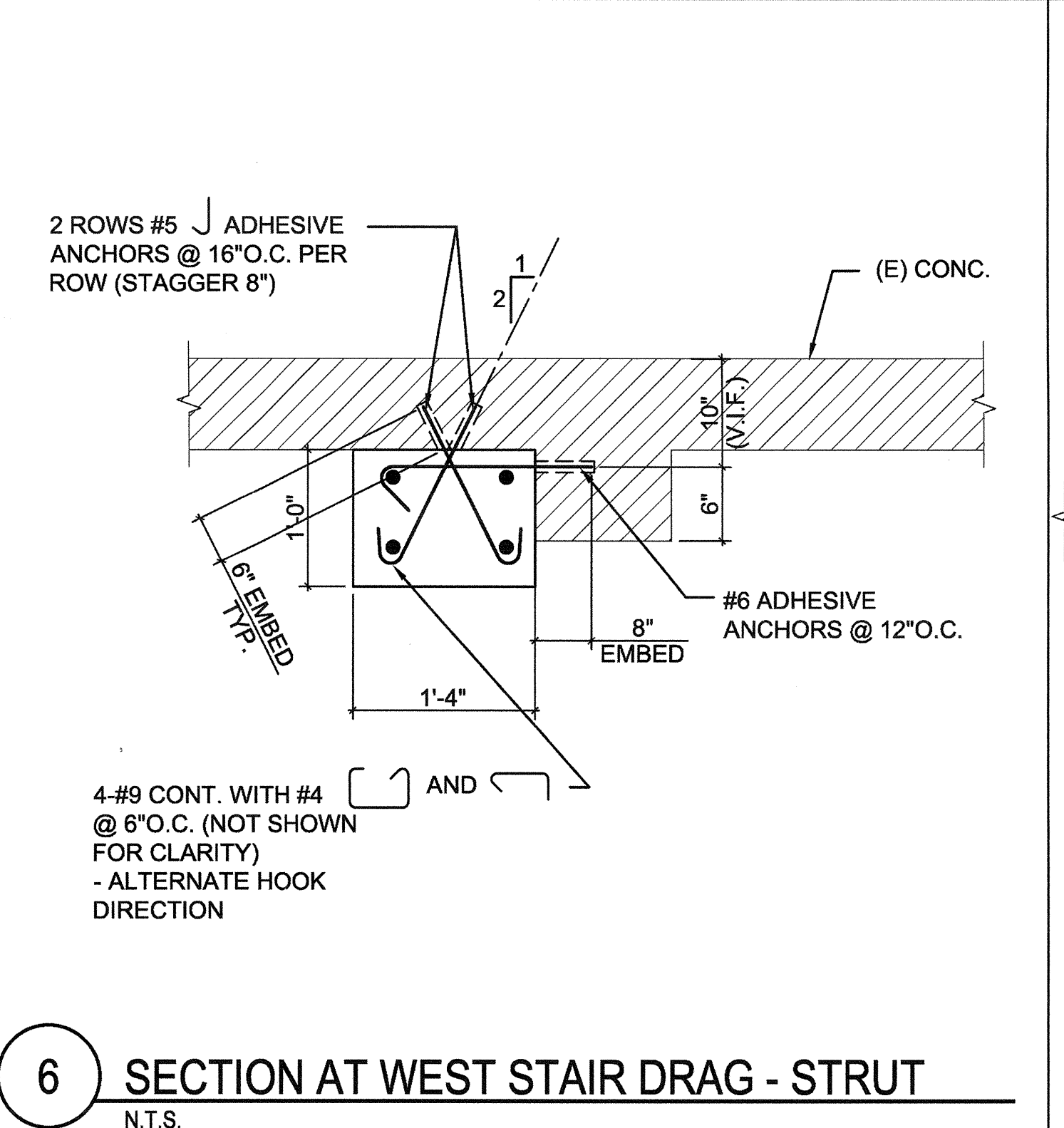
3 STEEL POST AT GROUND LEVEL
N.T.S.



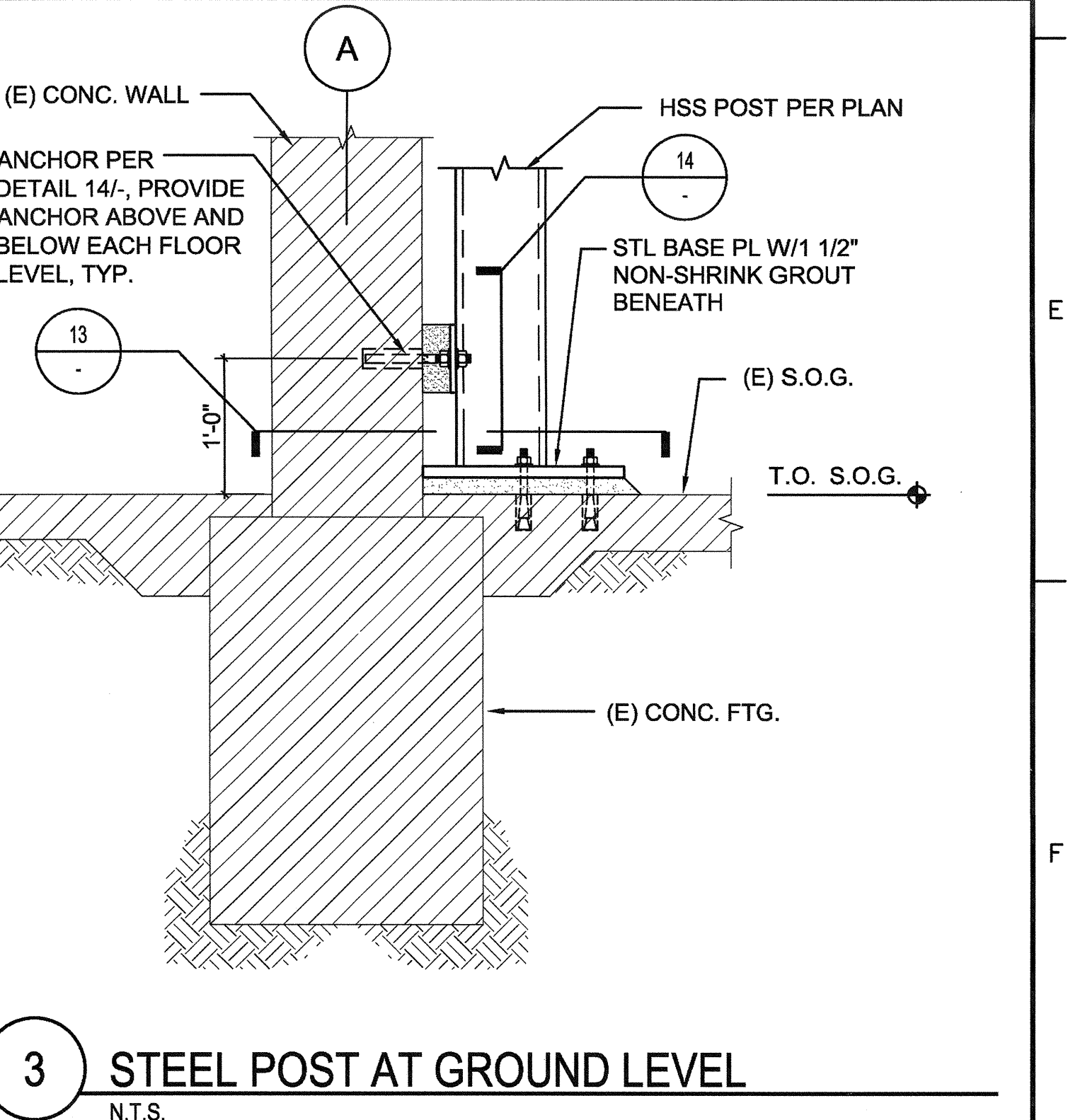
12 WEST STAIR DRAG - STRUT WALL CONN.
N.T.S.



9 WEST STAIR DRAG - STRUT COLL. CONN.
N.T.S.



6 SECTION AT WEST STAIR DRAG - STRUT
N.T.S.



3 STEEL POST AT GROUND LEVEL
N.T.S.

CONSULTANTS: DEGENKOLB ENGINEERS 235 Montgomery Street, Suite 500 San Francisco, CA 94104 415.392.6952 Phone 415.981.3157 Fax www.degenkolb.com 80594020.00		ARCHITECT/ENGINEERS: HMC Architects 1827 E. Fir Avenue, Studio 103 / Fresno, CA 93720 T 559.322.2444 / www.hmcarchitects.com		Drawing Title DETAILS Approved Project Director		Project Title BUILDING 24 SEISMIC CORRECTION AND ADDITION Location YAMC FRESNO, CA Date January 31, 2012		Project Number 570-215 Building Number 24 Drawing Number SS521 Dwg. 37 of 180		Office of Construction and Facilities Management Department of Veterans Affairs	
---	--	--	--	---	--	--	--	--	--	---	--