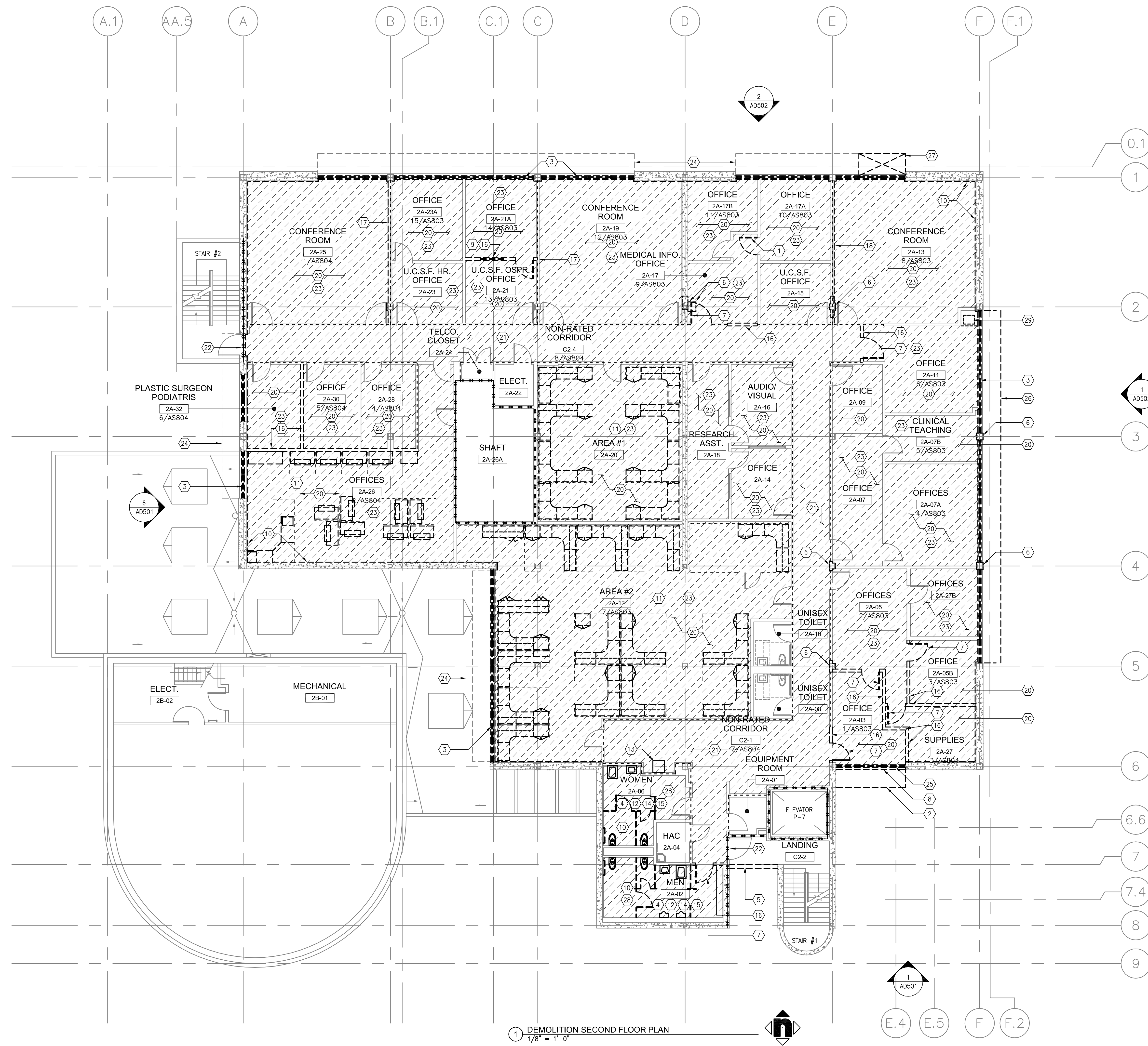


three inches = one foot
one and one half inches = one foot
one inch = one foot
three quarters inch = one foot
one half inch = one foot
three eighths inch = one foot
one quarter inch = one foot
one eighth inch = one foot



- DEMOLITION FLOOR PLAN LEGEND**
- EXTENT OF FLOOR FINISH DEMOLITION.
SEE KEYNOTES FOR FLOORING TYPE
- SECOND FLOOR PLAN - DEMOLITION KEYNOTES**
- 1 REMOVE DOOR. FRAME TO REMAIN.
 - 2 REMOVE (E) SUNSCREEN. (EXISTING SUN SCREEN TO REMAIN AT DEDUCTIVE ALTERNATE NO. 1)
 - 3 REMOVE (E) WINDOWS. TYPICAL ALL EXTERIOR WINDOWS THIS FLOOR. (WINDOWS TO REMAIN & PROVIDE SOLAR CONTROL FILM IN DEDUCTIVE ALTERNATE NO. 2)
 - 4 REMOVE (E) METAL TOILET PARTITION, TYPICAL.
 - 5 REMOVE (E) LOW CONCRETE WALL.
 - 6 REMOVE FINISH TO EXPOSE (E) COLUMN. REFER TO STRUCTURAL DRAWINGS FOR REQUIRED STRUCTURAL WORK.
 - 7 REMOVE DOOR AND FRAME.
 - 8 REMOVE (E) WALL BELOW WINDOW. (EXISTING WALL TO REMAIN AT DEDUCTIVE ALTERNATE NO. 1)
 - 9 REMOVE (E) WINDOW.
 - 10 REMOVE (E) INTERIOR WALL FINISH FROM FLOOR TO BOTTOM OF DECK. FURRING AND INSULATION TO REMAIN. TYPICAL AT ALL EXTERIOR WALLS.
 - 11 REMOVE (E) WORKSTATION. PROTECT FROM DAMAGE, TYPICAL @ WALL WORK STATIONS.
 - 12 REMOVE (E) TOILET FIXTURE. REFER TO PLUMBING DRAWINGS.
 - 13 REMOVE (E) DRINKING FOUNTAIN. REFER TO PLUMBING DRAWINGS.
 - 14 REMOVE (E) CERAMIC FLOOR TILE AND WAINSCOT
 - 15 REMOVE (E) TOILET ROOM ACCESSORIES
 - 16 REMOVE (E) WALL, SHOWN DASHED.
 - 17 REMOVE (1) LAYER OF (E) VINYL COVERED GYPSUM BOARD.
 - 18 REMOVE (1) LAYER OF (E) PAINTED SOUND BOARD.
 - 19 NOT USED
 - 20 REMOVE (E) CARPET
 - 21 REMOVE (E) VCT TILES.
 - 22 (E) TRANSOM WINDOW TO REMAIN.
 - 23 REMOVE AND PROTECT FROM DAMAGE (E) WALL MOUNTED EQUIPMENT, ELECTRICAL DEVICES, SHELVES, ETC., TYPICAL @ ALL WALLS RECEIVING NEW FINISHES. REINSTALL IN SAME LOCATION AFTER NEW FINISH WORK IS COMPLETE.
 - 24 (E) SUNSCREEN TO REMAIN. U.N.O. REMOVE DEBRIS AND CLEAN VIA POWER WASH.
 - 25 REMOVE (E) WINDOWS. (EXISTING WINDOWS TO REMAIN & PROVIDE SOLAR CONTROL FILM AT DEDUCTIVE ALTERNATE NO. 1)
 - 26 REMOVE (E) SUNSCREEN. (EXISTING SUNSCREEN TO REMAIN AT DEDUCTIVE ALTERNATE NO. 5)
 - 27 REMOVE PORTION OF (E) SUNSCREEN SHOWN DASHED.
 - 28 REMOVE (E) WALL FINISH TO EXPOSE (E) STUDS, TYPICAL AT ALL INTERIOR WALLS IN THIS ROOM.
 - 29 REMOVE (E) SINK CABINET. SALVAGE PLUMBING FOR REUSE.

1 DEMOLITION SECOND FLOOR PLAN
1/8" = 1'-0"

CONSULTANTS:			ARCHITECT/ENGINEERS:		Drawing Title DEMOLITION SECOND FLOOR PLAN	Project Title BUILDING 24 SEISMIC CORRECTION AND ADDITION	Project Number 570-215 Building Number 24	Office of Construction and Facilities Management
Revisions:			 1827 E. Fir Avenue, Studio 103 / Fresno, CA 93720 T 559 322 2444 / www.hmcarchitects.com	Approved Project Director	Location VAMC FRESNO, CA	Drawing Number AD202 Dwg. 43 of 180		
Date					Date October 14, 2011	Checked BB	Drawn CLO	