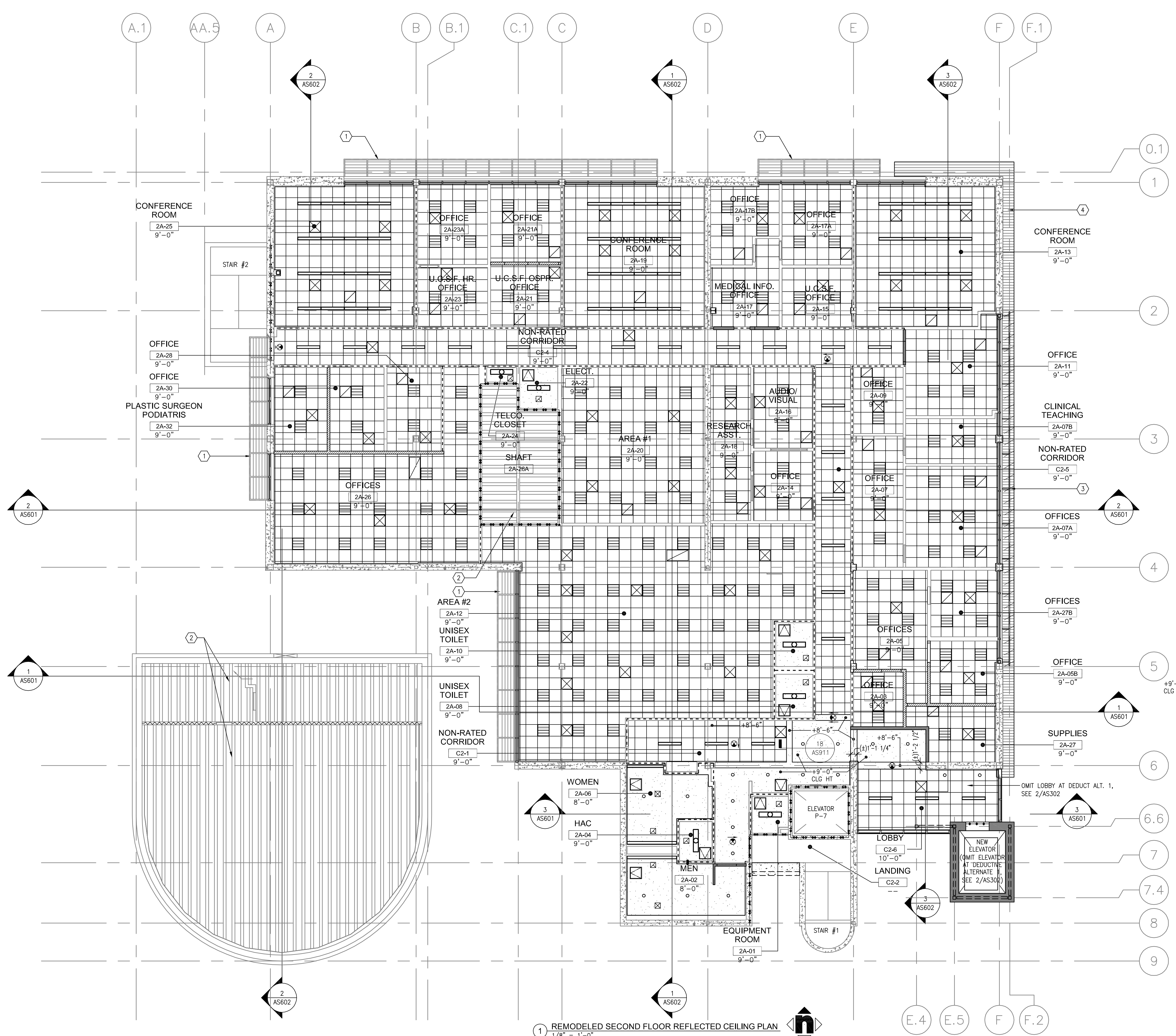
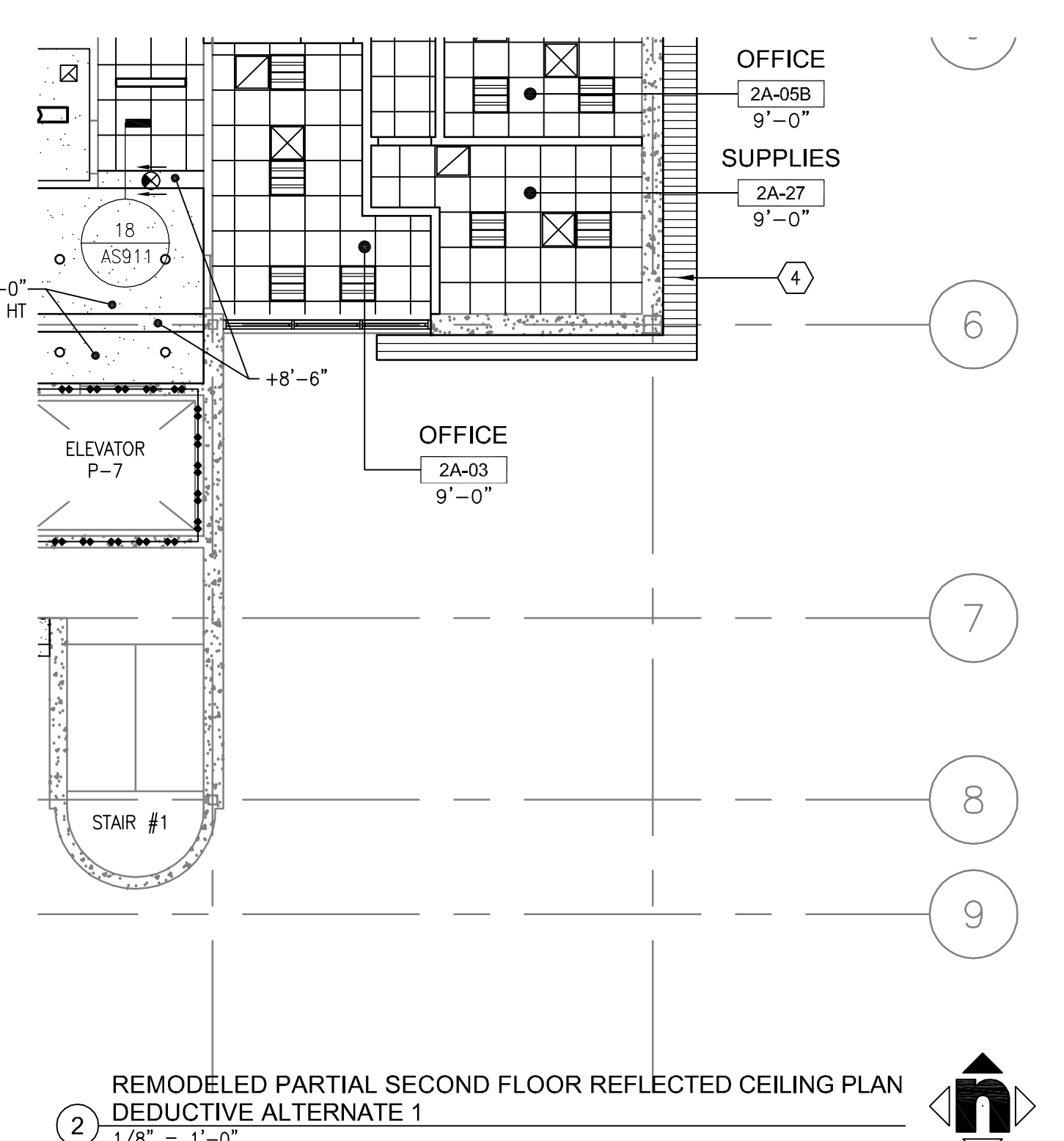


three inches = one foot
one and one half inches = one foot
one inch = one foot
three quarters inch = one foot
one half inch = one foot
three eighths inch = one foot
one quarter inch = one foot
one eighth inch = one foot

A
B
C
D
E
F



- REFLECTED CEILING PLAN LEGEND**
- FULL HEIGHT METAL STUD @ 16" O.C. U.N.O. WITH SOUND BATT. INSULATION AND FINISHES FULL HEIGHT FROM FINISH FLOOR TO DECK ABOVE. REFER TO DETAIL 6, 7 & 8/AS906.
 - PARTIAL HEIGHT METAL STUD @ 16" O.C. U.N.O. WITH SOUND BATT. INSULATION AND FINISHES FROM FINISH FLOOR TO 2" ABOVE FINISH CEILING. REFER TO DETAIL 5/AS906.
 - (E) METAL STUD WALL WITH SOUND BATT INSULATION. WALL AND FINISHES FULL HEIGHT FROM FINISH FLOOR TO DECK ABOVE. REPLACE FINISHES WHERE NOTED.
 - (E) METAL STUD WALL WITH THERMAL INSULATION. WALL AND FINISHES FULL HEIGHT FROM FINISH FLOOR TO DECK ABOVE. REPLACE FINISHES WHERE NOTED.
 - (E) FULL HEIGHT STRUCTURAL CONCRETE WALL.
 - (E) METAL STUD WALL WITH SOUND BATT INSULATION. WALL AND FINISHES PARTIAL HEIGHT. REPLACE FINISHES WHERE NOTED.
 - 1 HR FIRE BARRIER. WALL AND FINISHES FULL HEIGHT FROM FLOOR TO DECK ABOVE.
 - (E) 2 HR FIRE BARRIER. WALL AND FINISHES FULL HEIGHT FROM FLOOR TO DECK ABOVE.
 - CEMENT PLASTER. REFER TO SHEET AS911.
 - SUSPENDED GYPSUM WALLBOARD CEILING. REFER TO SHEET AS911.
 - SUSPENDED T-BAR ACOUSTICAL CEILING WITH 2'-0" x 2'-0" INFILL PANELS. REFER TO SHEET AS911.
 - CONCRETE FLOOR ABOVE. REFER TO STRUCTURAL DRAWINGS.
 - EXPOSED INSULATION BELOW ROOF DECK.
 - LIGHT FIXTURES. REFER TO ELECTRICAL DRAWINGS FOR FIXTURE TYPES.
 - HVAC DIFFUSERS REFER TO MECHANICAL DRAWINGS FOR DIFFUSER TYPES.
 - CEILING ACCESS PANEL, ALSO INDICATES DIRECTION OF DOOR SWING. SEE DETAIL 6/AS911.
 - EXIT SIGN. SOLID LINES INDICATES THE LOCATIONS OF ILLUMINATION WITH EXIT DIRECTIONAL ARROW. REFER TO ELECTRICAL DRAWINGS FOR FIXTURE TYPES.
- REFLECTED CEILING PLAN - REMODEL KEYNOTES**
- (1) (E) SUNSCREEN TO REMAIN, U.N.O. REMOVE DEBRIS AND CLEAN VIA POWERWASH.
 - (2) EXPOSED INSULATION BELOW (E) ROOF DECK.
 - (3) SUN CONTROL DEVICES-SOLAR TRACKING (OMIT SUN CONTROL DEVICES AT 2ND FLOOR AT DEDUCT ALT. #5).
 - (4) CORRUGATED METAL WALL PANEL SOFFIT.



1 REMODELED SECOND FLOOR REFLECTED CEILING PLAN
1/8" = 1'-0"

CONSULTANTS:			ARCHITECT/ENGINEERS:		Drawing Title SECOND FLOOR REFLECTED CEILING PLAN	Project Title BUILDING 24 SEISMIC CORRECTION AND ADDITION	Project Number 570-215 Building Number 24	Office of Construction and Facilities Management 	
Revisions:			HMC Architects 1827 E. Fir Avenue, Studio 103 / Fresno, CA 93720 T 559 322 2444 / www.hmcarchitects.com		Approved Project Director	Location VAMC FRESNO, CA	Drawing Number AS302 Dwg. 57 of 180		
Date						Date October 14, 2011	Checked BB	Drawn CLO	