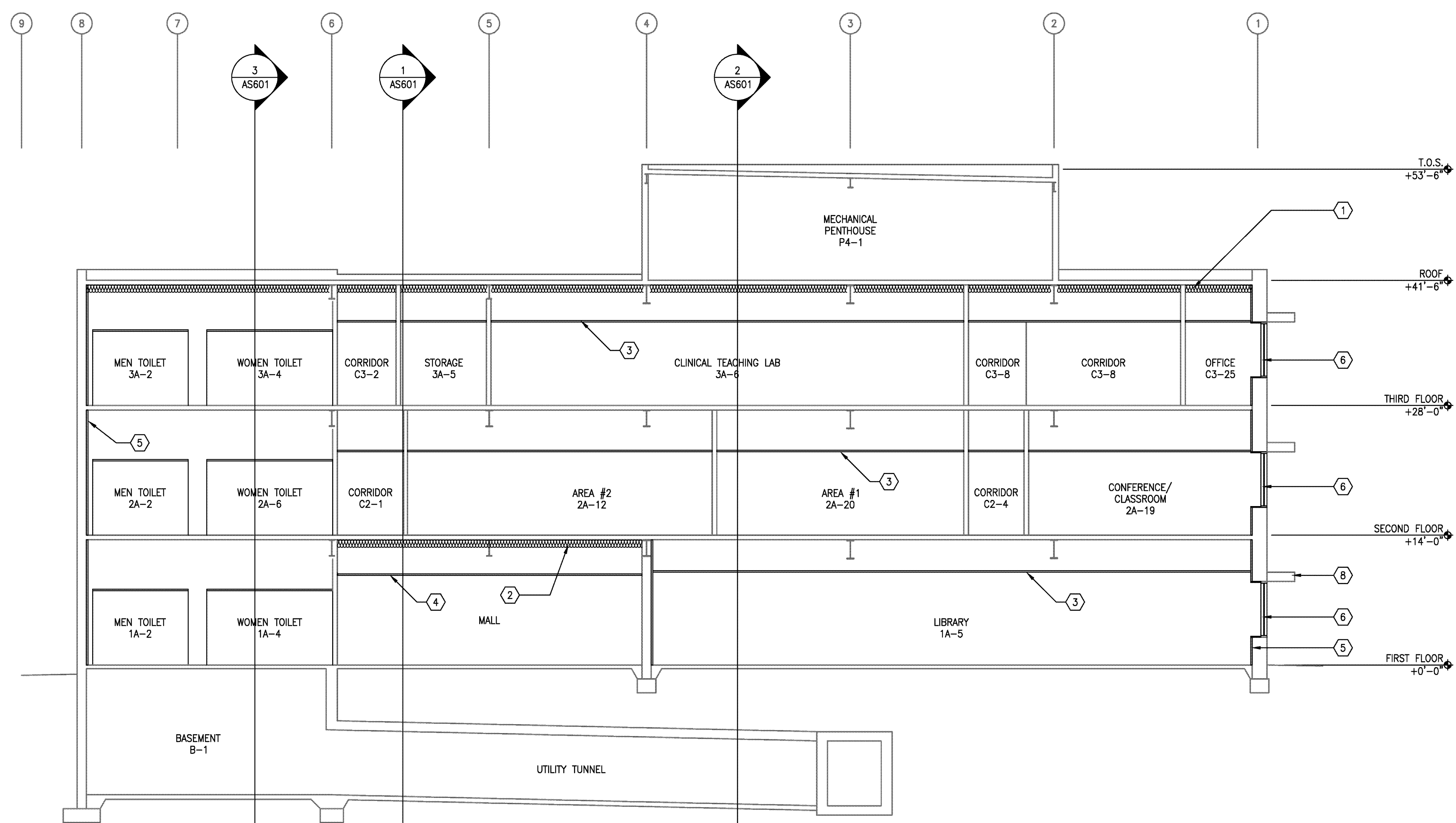
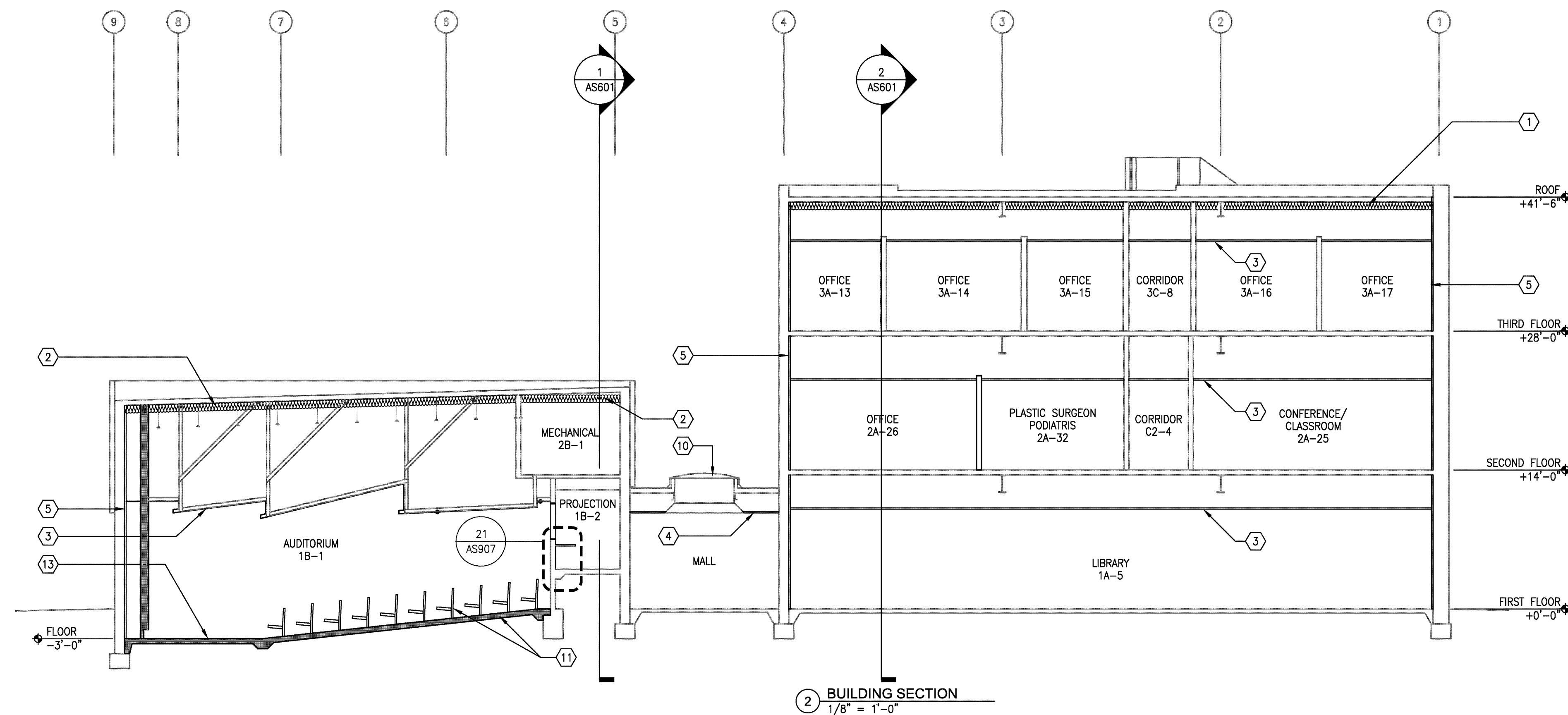


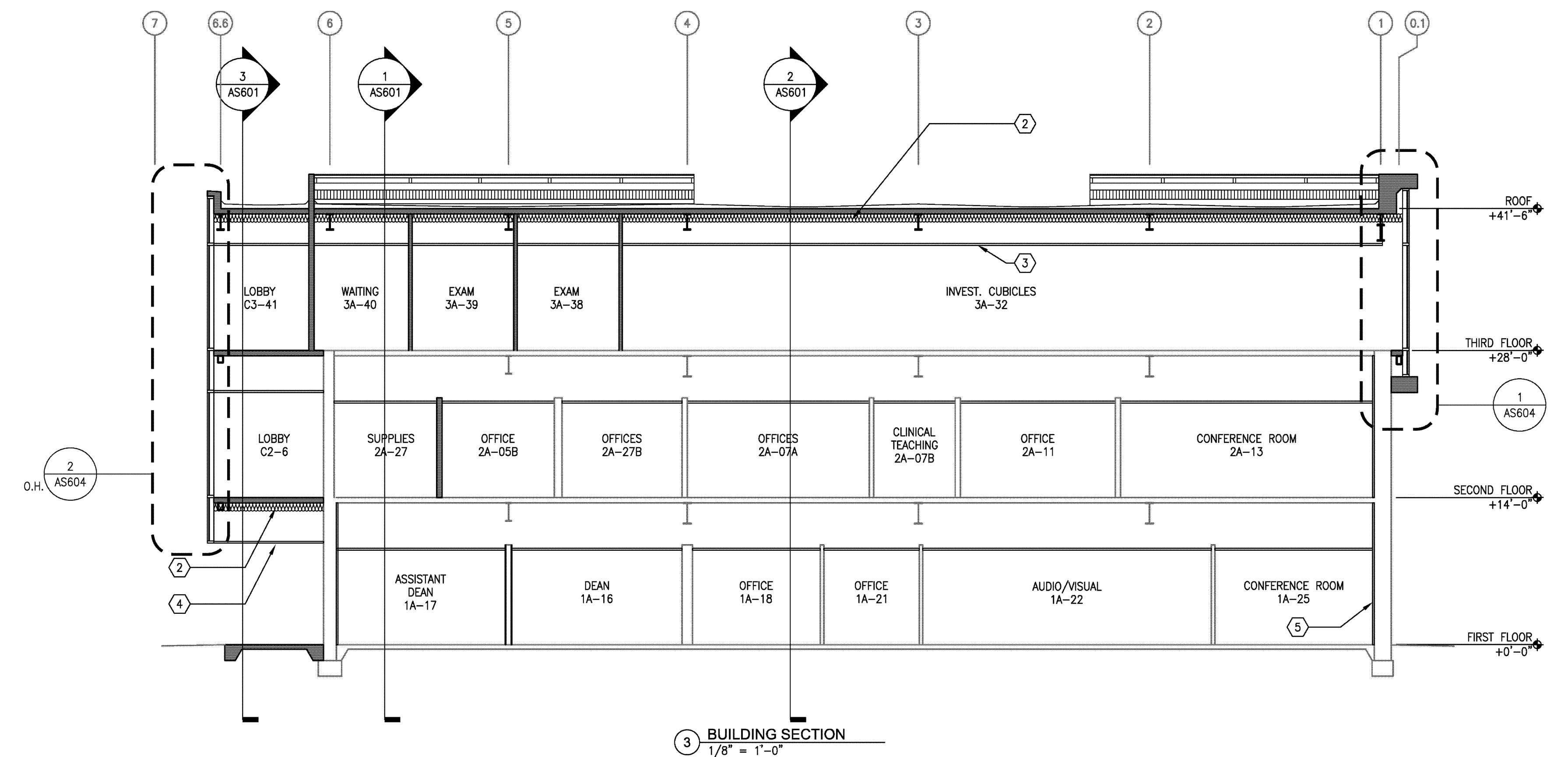
4 BUILDING SECTION - AUDITORIUM DEDUCTIVE ALTERNATE 4  
1/8" = 1'-0"



1 BUILDING SECTION  
1/8" = 1'-0"



2 BUILDING SECTION  
1/8" = 1'-0"



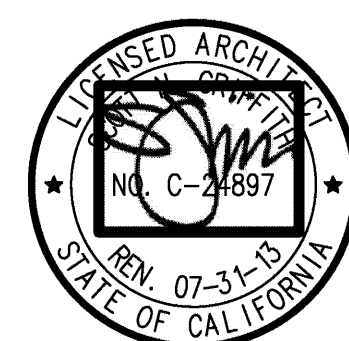
3 BUILDING SECTION  
1/8" = 1'-0"

### BUILDING SECTION - REMODEL KEYNOTES

- ① REPLACE BELOW-DECK INSULATION WITH NEW R-30 BATT. INSULATION SUPPORTED BY IMPALING PINS, TYPICAL AT THIRD FLOOR ROOFS. REMOVE SPRAY ON FIREPROOFING AS REQUIRED TO MOUNT IMPALING PINS.
- ② R-30 BATT. INSULATION, PROVIDE IMPALING PINS AS SPECIFIED. REMOVE SPRAY-ON FIREPROOFING AS REQUIRED TO MOUNT IMPALING PINS.
- ③ CEILING, TYPICAL. REFER TO REFLECTED CEILING PLAN
- ④ CEMENT PLASTER SOFFIT. REFER TO 1ST FLOOR REFLECTED CEILING PLAN
- ⑤ GYPSUM WALLBOARD & BASE OVER 2" RIGID INSULATION OVER EXISTING INSULATION FROM FLOOR TO DECK TYPICAL ALL EXTERIOR WALLS, ALL 3 FLOORS.
- ⑥ ALUMINUM WINDOW SYSTEM. REFER TO SCHEDULE.  
(OMIT WINDOWS AT DEDUCTIVE ALTERNATE 2)
- ⑦ (E) CEILING TO REMAIN.
- ⑧ (E) SUNSCREEN TO REMAIN, U.N.O. REMOVE DEBRIS AND CLEAN VIA POWERWASH.
- ⑨ NOT USED
- ⑩ (E) SKYLIGHT TO REMAIN.
- ⑪ SLOPING FLOOR SLAB AND AUDITORIUM SEATING
- ⑫ NOT USED
- ⑬ CONCRETE FLOOR

[illegible]

CONSULTANTS:



ARCHITECT/ENGINEERS:

HMC Architects

1827 E. Fir Avenue, Studio 103 / Fresno, CA 93720  
T 559 322 2444 / [www.hmcarchitects.com](http://www.hmcarchitects.com)

Drawing Title	BUILDING SECTIONS
---------------	-------------------

Approved: Project Director

Project Title	BUILDING 24 SEISMIC CORRECTION AND ADDITION
---------------	---

Location	VAMC FRESNO, CA
----------	-----------------

Date  
Oct

Checked
BB

Drawn
CLO

Project Number	570-215
Building Number	24

	Drawing Number

AS602  
Dwg. 66 of 180

Office of  
Construction  
and Facilities  
Management

