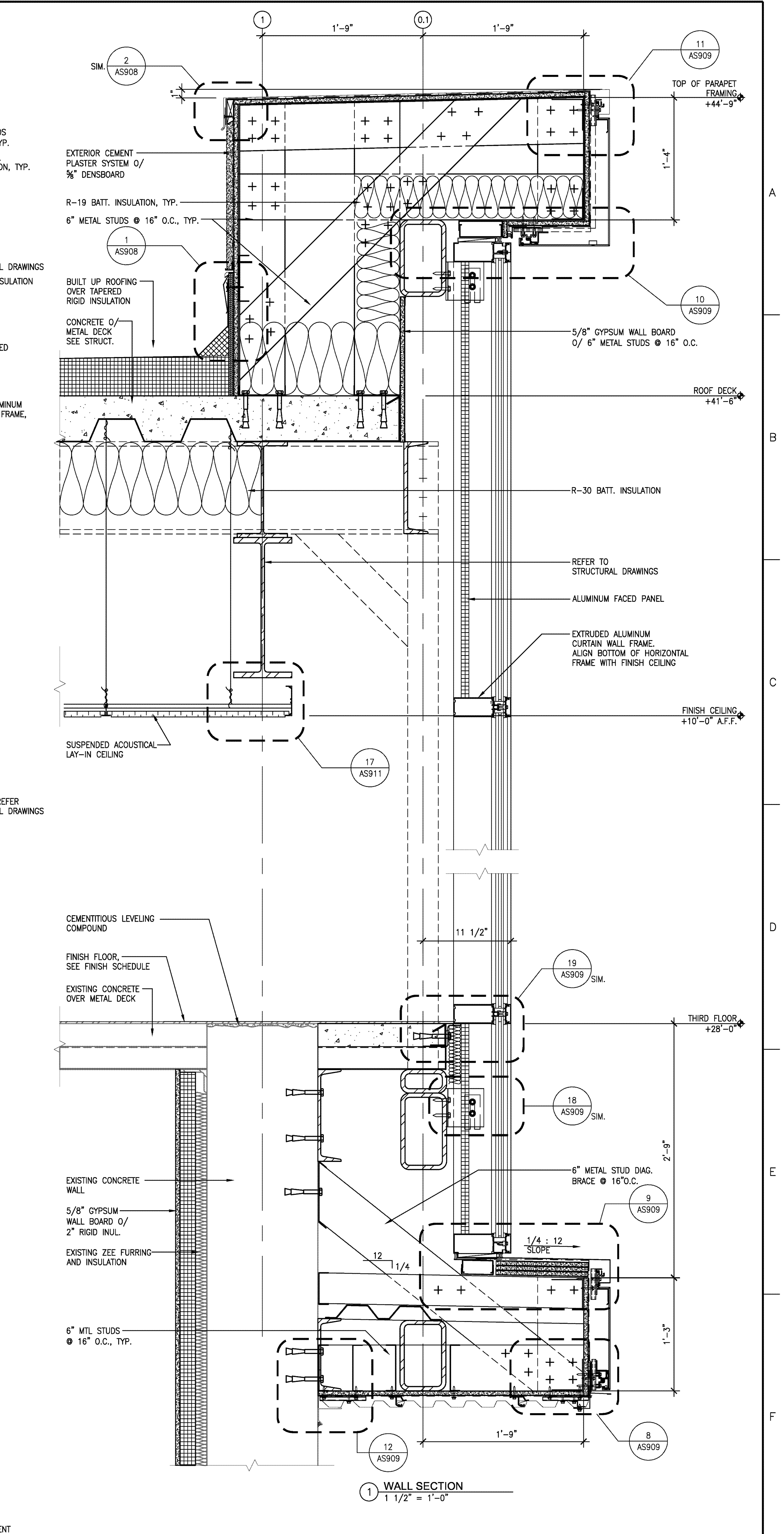
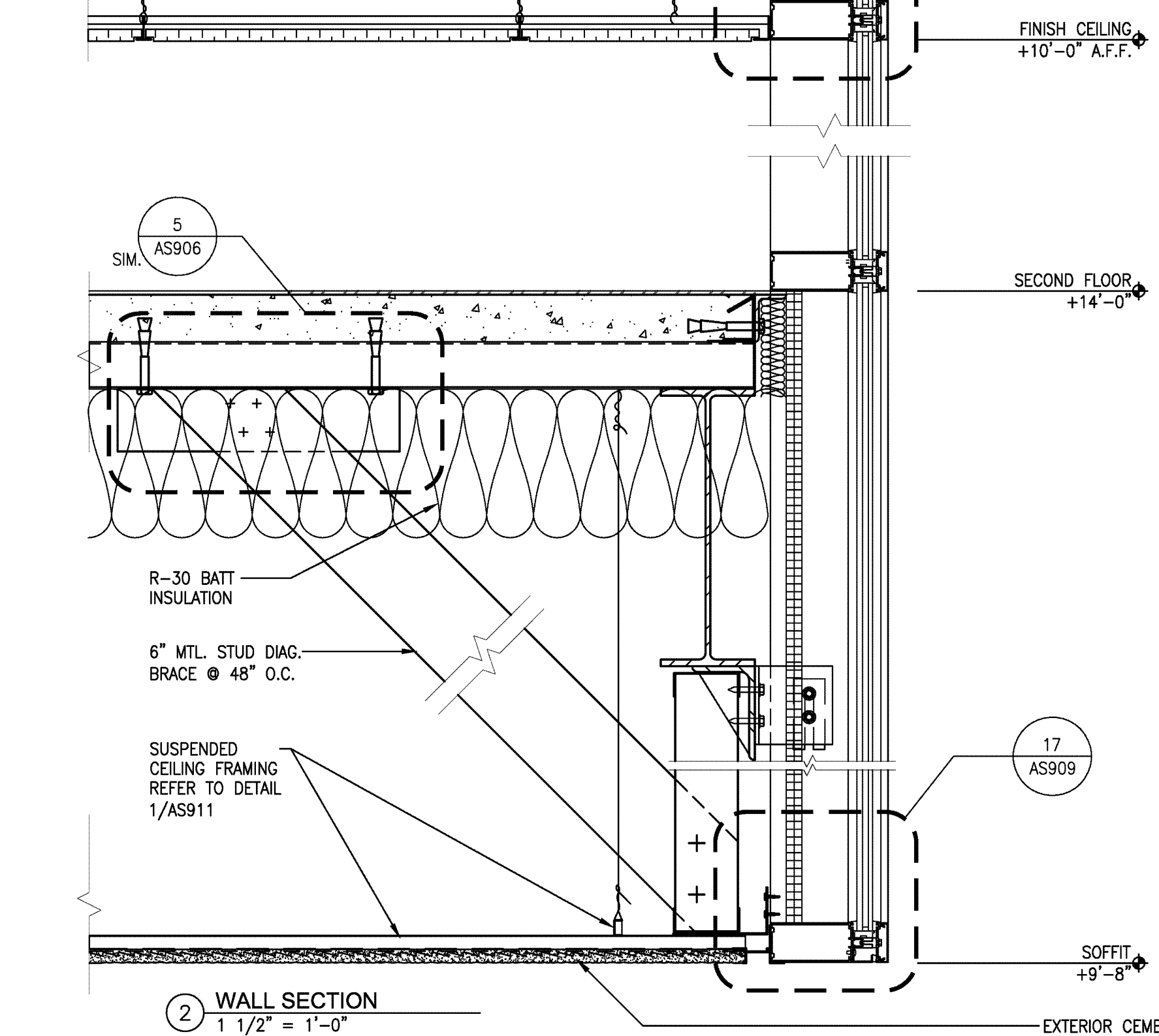
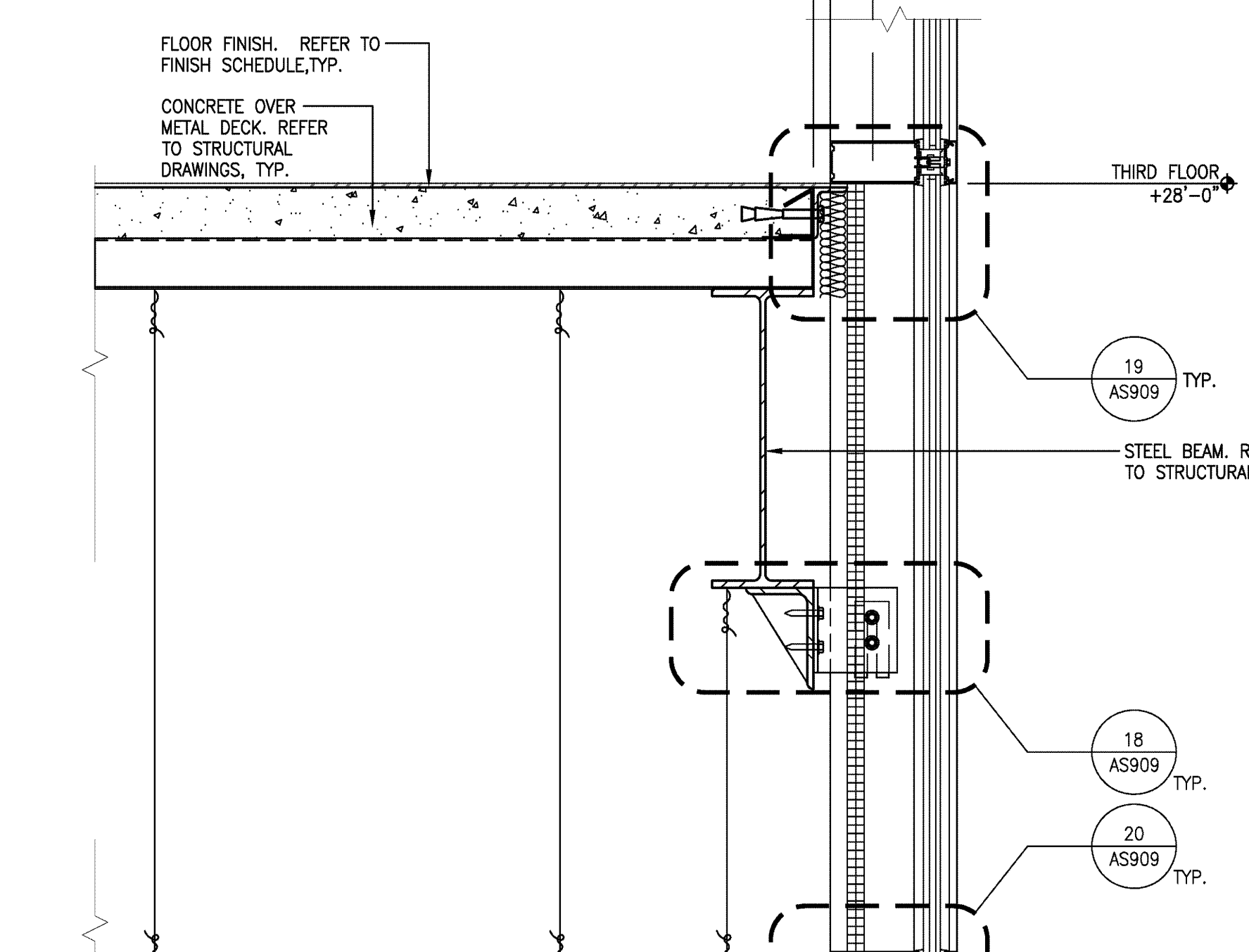
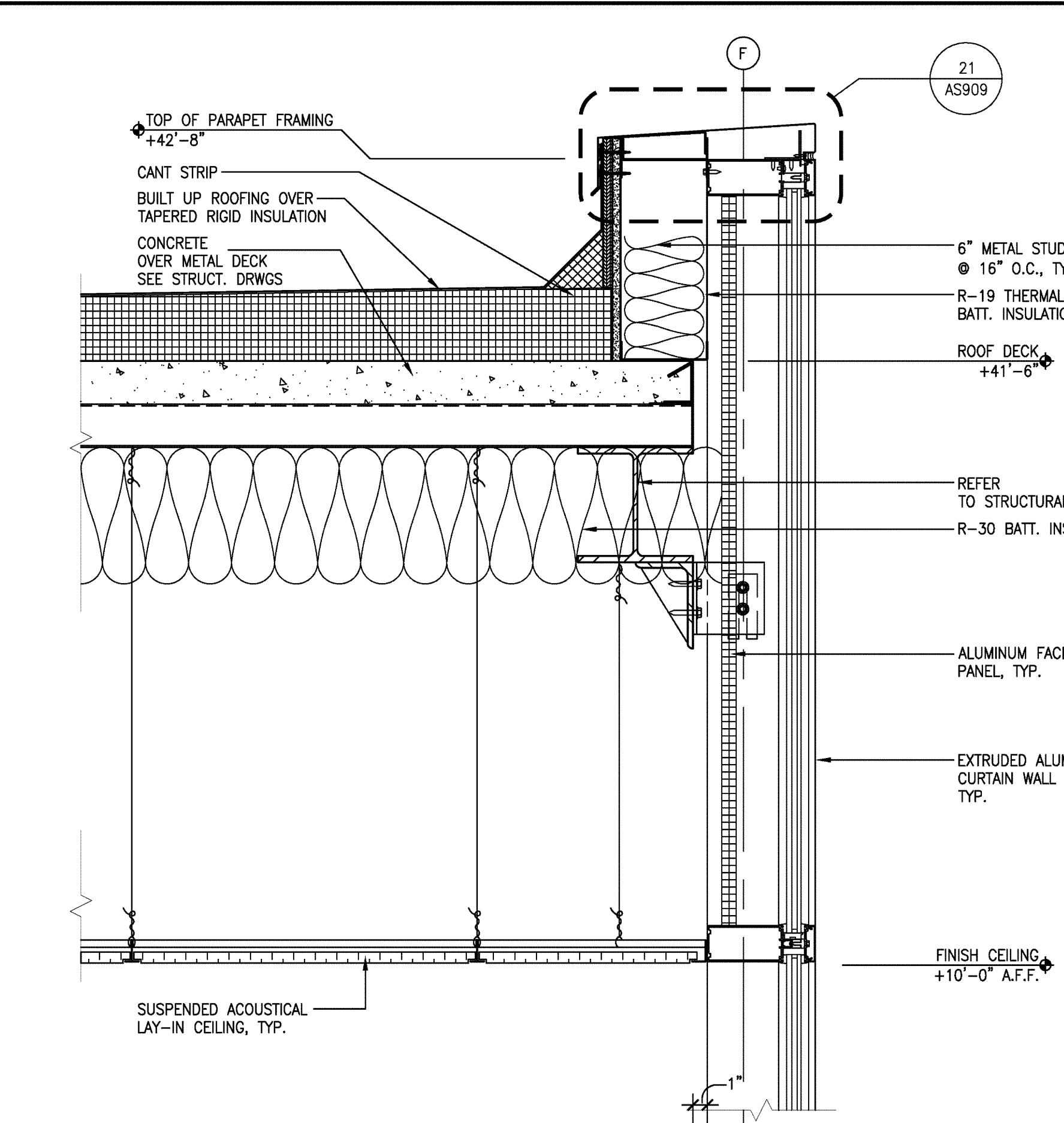
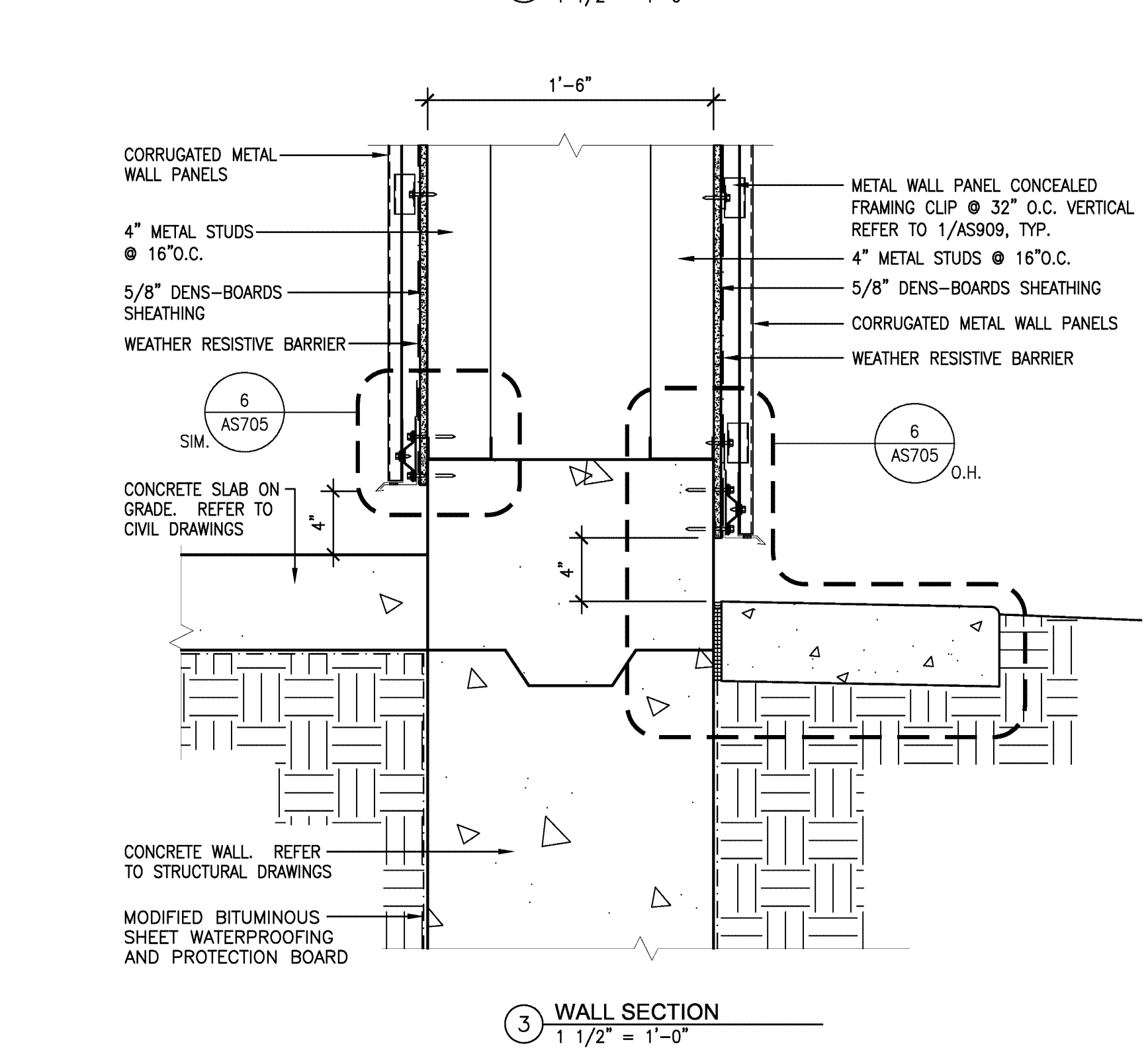
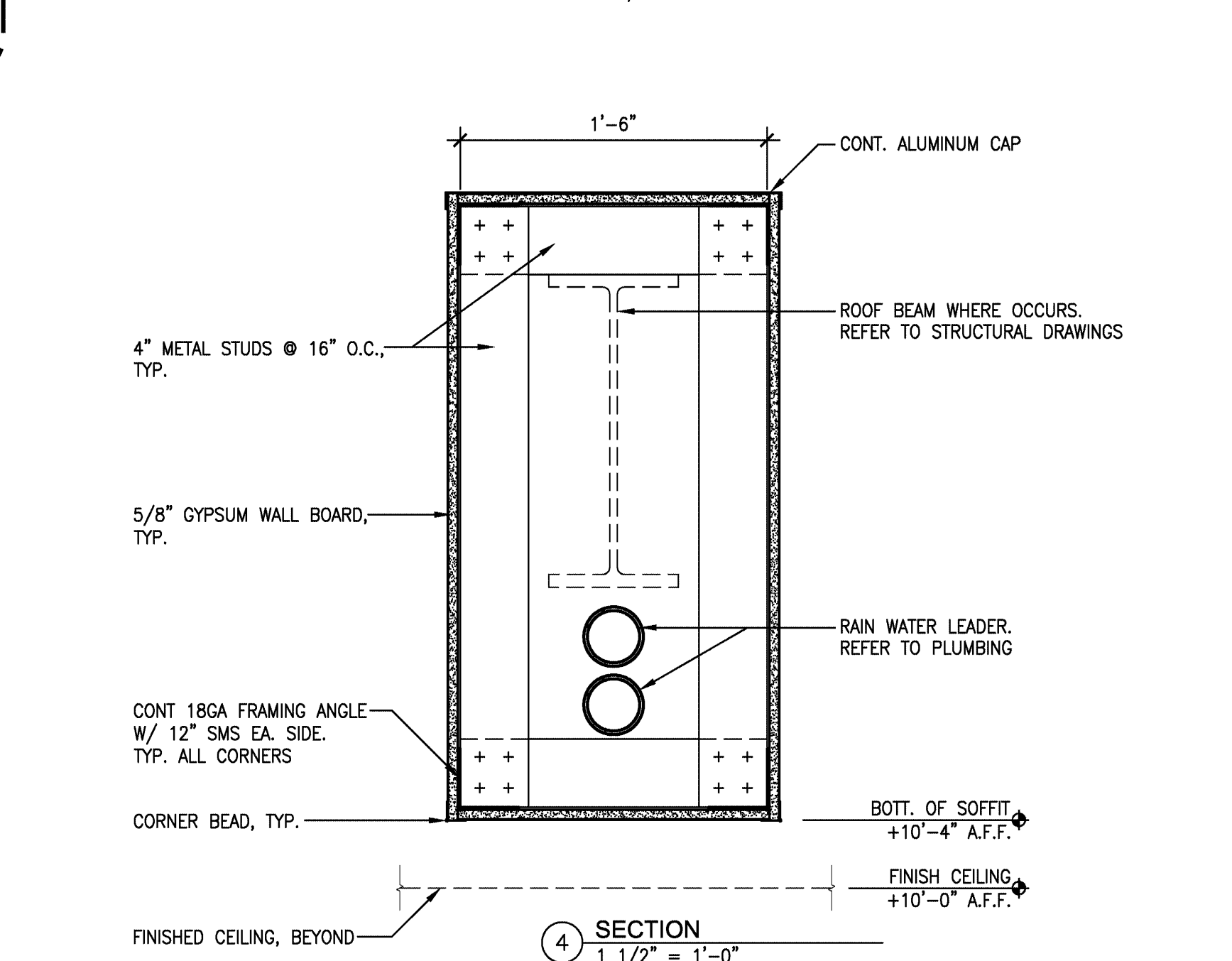
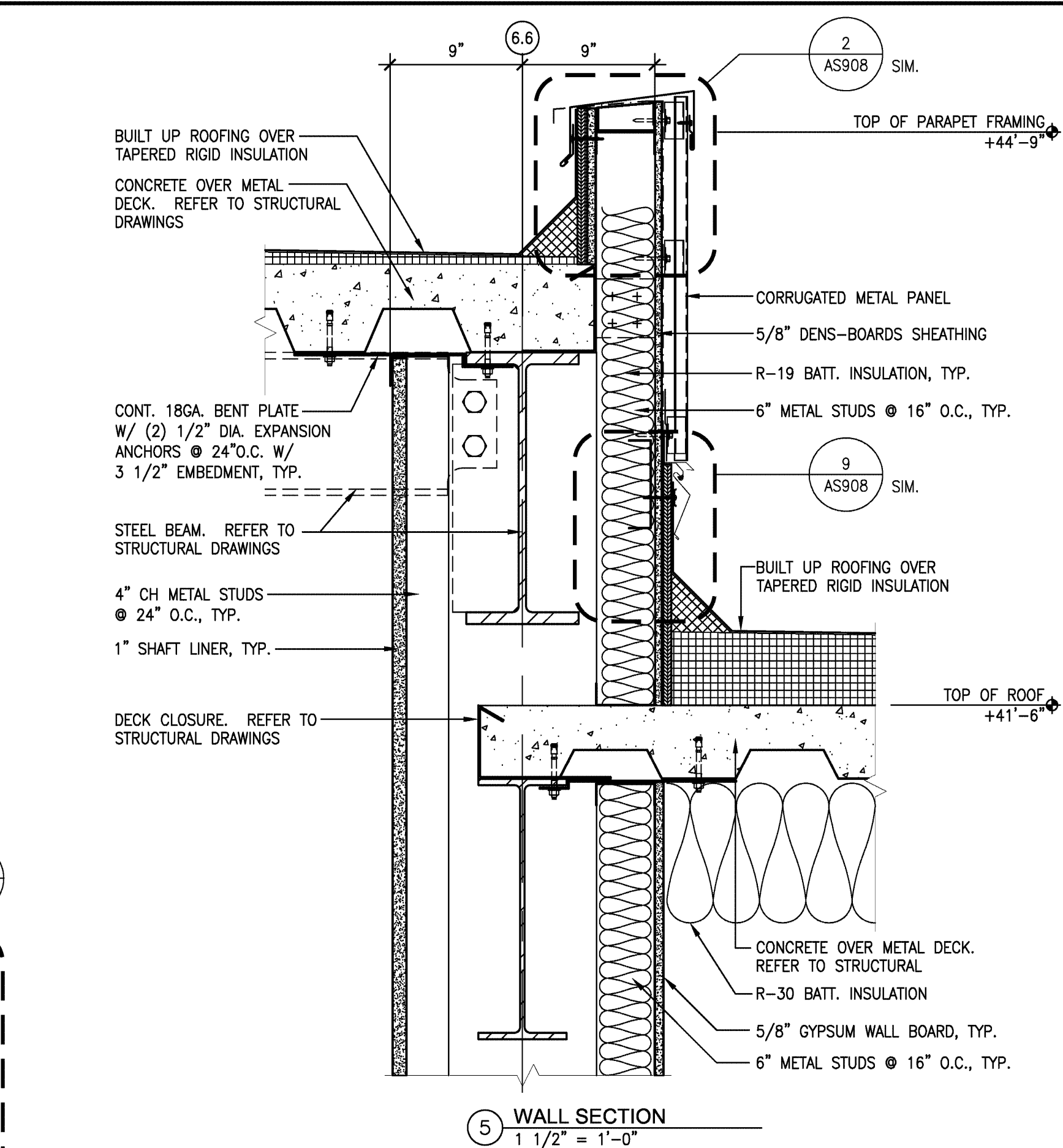
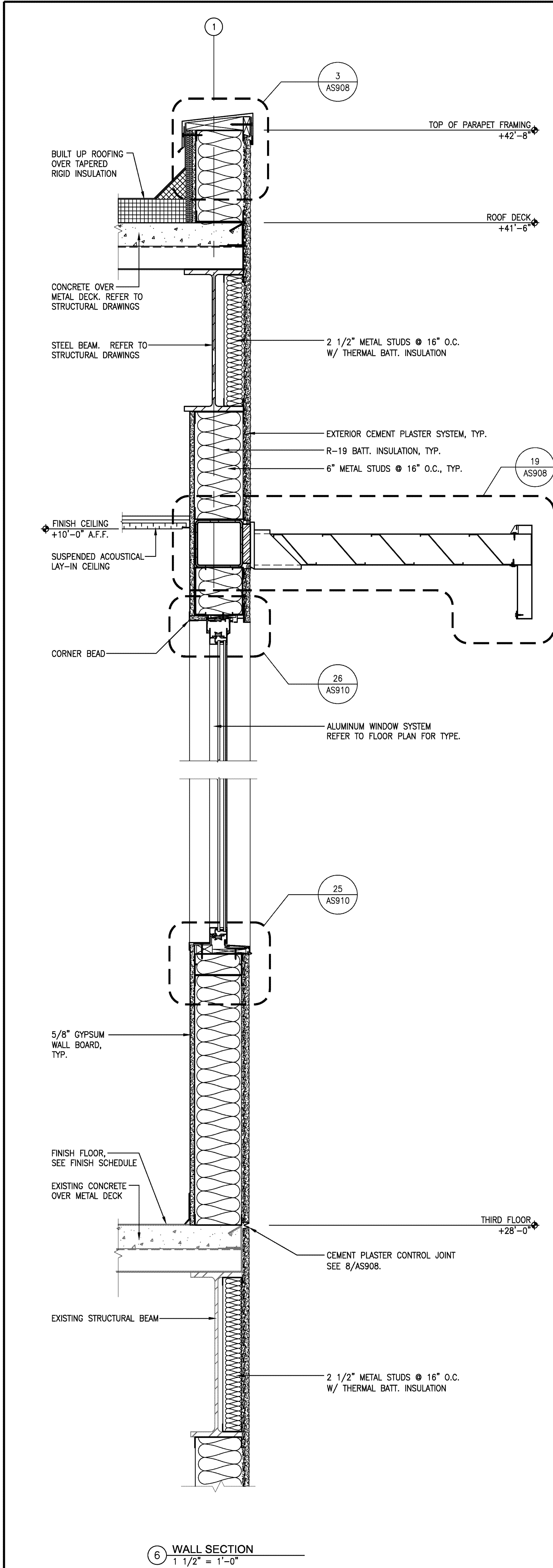


three inches = one foot
one and one half inches = one foot
one inch = one foot
three quarters inch = one foot
one half inch = one foot
three eighths inch = one foot
one quarter inch = one foot
one eighth inch = one foot



CONSULTANTS:		ARCHITECT/ENGINEERS:		Drawing Title WALL SECTIONS		Project Title BUILDING 24 SEISMIC CORRECTION AND ADDITION		Project Number 570-215 Building Number 24		Office of Construction and Facilities Management	
				Approved Project Director		Location VAMC FRESNO, CA		Drawing Number AS604 Dwg. 68 of 180		Department of Veterans Affairs	
Revisions						Date October 14, 2011		Checked BB		Drawn CLO	

1827 E. Fir Avenue, Studio 103 / Fresno, CA 93720
T 559 322 2444 / www.hmcarchitects.com

1 2 3 4 5 6 7 8 9