

### LEGEND

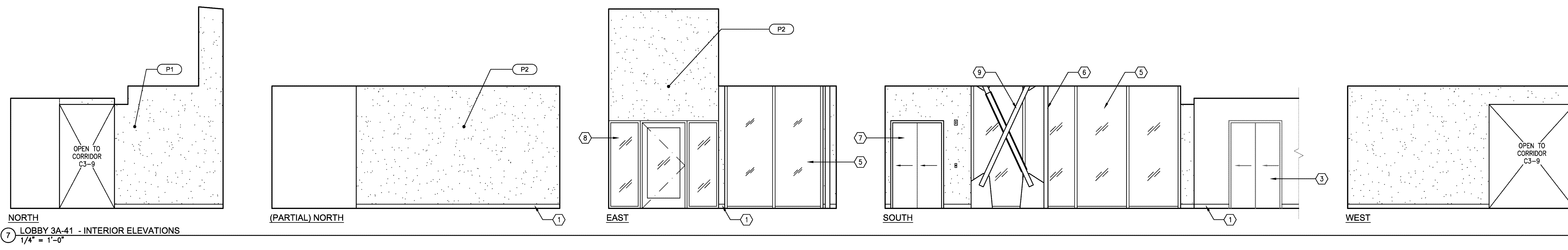
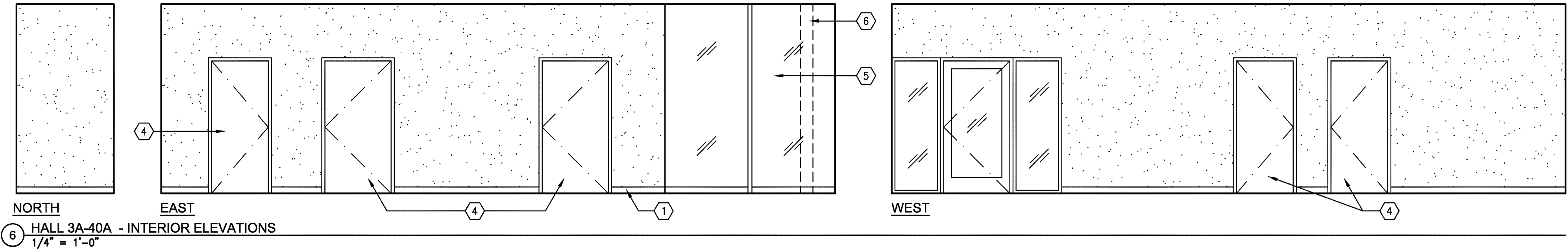
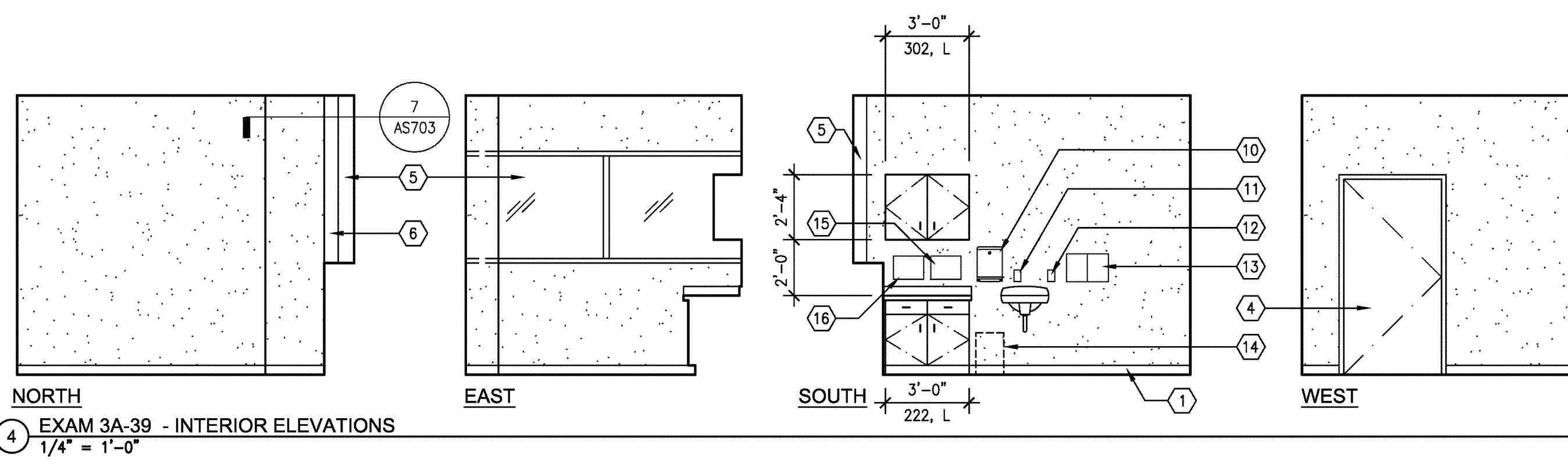
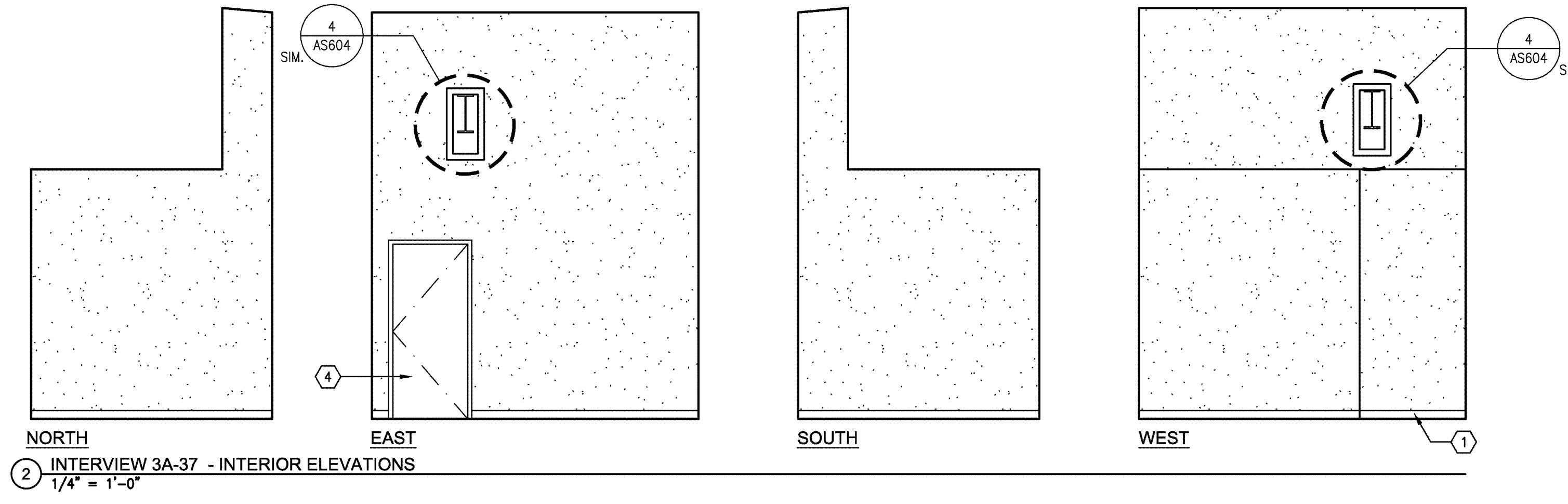
(E) GYPSUM WALLBOARD TO REMAIN. REFINISH TO MATCH EXISTING WALL TEXTURE AFTER (E) WALLCOVERING IS REMOVED. REFER TO FINISH SCHEDULE AND FLOOR PLAN FOR ADDITIONAL INFO.




(E) GYPSUM WALLBOARD TO REMAIN. REFER TO FINISH SCHEDULE AND FLOOR PLAN FOR ADDITIONAL INFO.

**P1** INDICATES FINISH COLOR. REFER TO SCHEDULE FOR FINISHES (09 06 00) FINISH TYPE AND COLOR.

### INTERIOR ELEVATION - REMODEL KEYNOTES

- 1 NEW RUBBER BASE, TYP. REFER TO FINISH SCHEDULE.  
(MATCH EXISTING WHERE OCCURS), U.N.O.
- 2 NEW SUSPENDED ACT CEILING, TYP. REFER TO CEILING  
PLAN FOR TYPE.
- 3 (E) ELEVATOR DOOR.
- 4 NEW DOOR AND FRAME. SEE FLOOR PLAN AND DOOR  
SCHEDULE FOR TYPE, TYP.
- 5 NEW ALUMINUM CURTAIN WALL SYSTEM AND GLAZING
- 6 STEEL COLUMN, AESS, PAINT. REFER TO STRUCTURAL  
DRAWINGS.
- 7 NEW ELEVATOR DOOR
- 8 NEW ALUMINUM STOREFRONT SYSTEM. SEE FLOOR PLAN  
FOR WINDOW TYPE.
- 9 BRACE FRAME, AESS, PAINT. REFER TO STRUCTURAL DRAWINGS.
- 10 PAPER TOWEL DISPENSER. REFER TO SPEC SECTION 10 20 00.
- 11 SOAP DISPENSER. REFER TO SPEC SECTION 10 20 00.
- 12 HAND SANITIZER DISPENSER, REFER TO SPEC. SECTION 10 80 00.
- 13 LITERATURE RACK, REFER TO SPEC. SECTION 10 80 00.
- 14 WASTE RECEPTACLE (N.I.C.)
- 15 SHARPS CONTAINER, REFER TO SPEC. SECTION 10 80 00.
- 16 GLOVE DISPENSER, REFER TO SPEC. SECTION 10 80 00.



		CONSULTANTS:		ARCHITECT/ENGINEERS:   1827 E. Fir Avenue, Studio 103 / Fresno, CA 93720 T 559 322 2444 / www.hmcarchitects.com	Drawing Title THIRD FLOOR INTERIOR ELEVATIONS	Project Title BUILDING 24 SEISMIC CORRECTION AND ADDITION	Project Number 570-215	Office of Construction and Facilities Management		
						Building Number 24				
					Approved: Project Director	Location VAMC FRESNO, CA	Drawing Number AS807			
						Date October 14, 2011	Checked BB		Drawn CLO	Dwg. 83 of 180
Revisions:	Date							 Department of Veterans Affairs		