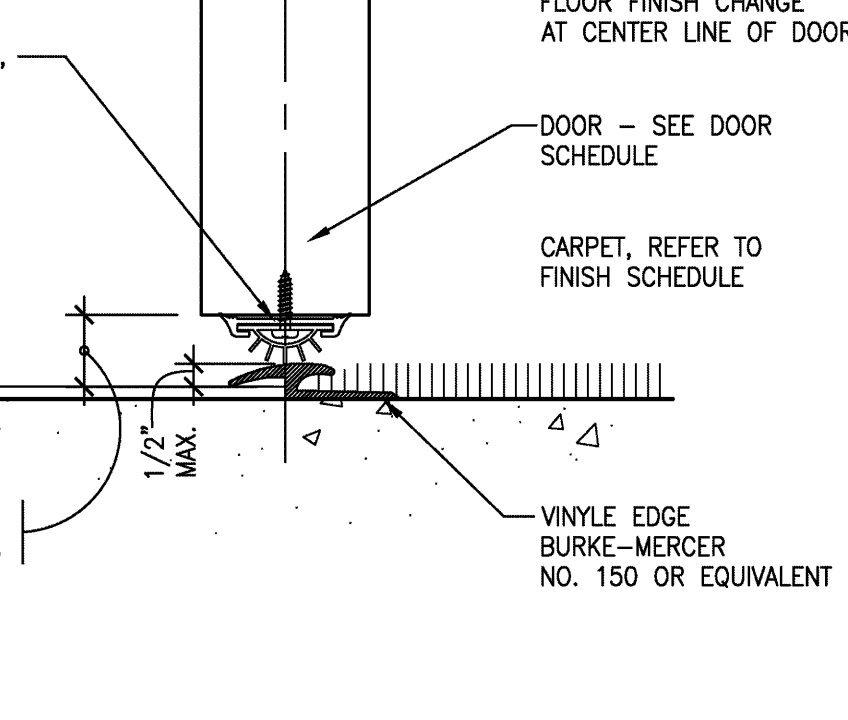
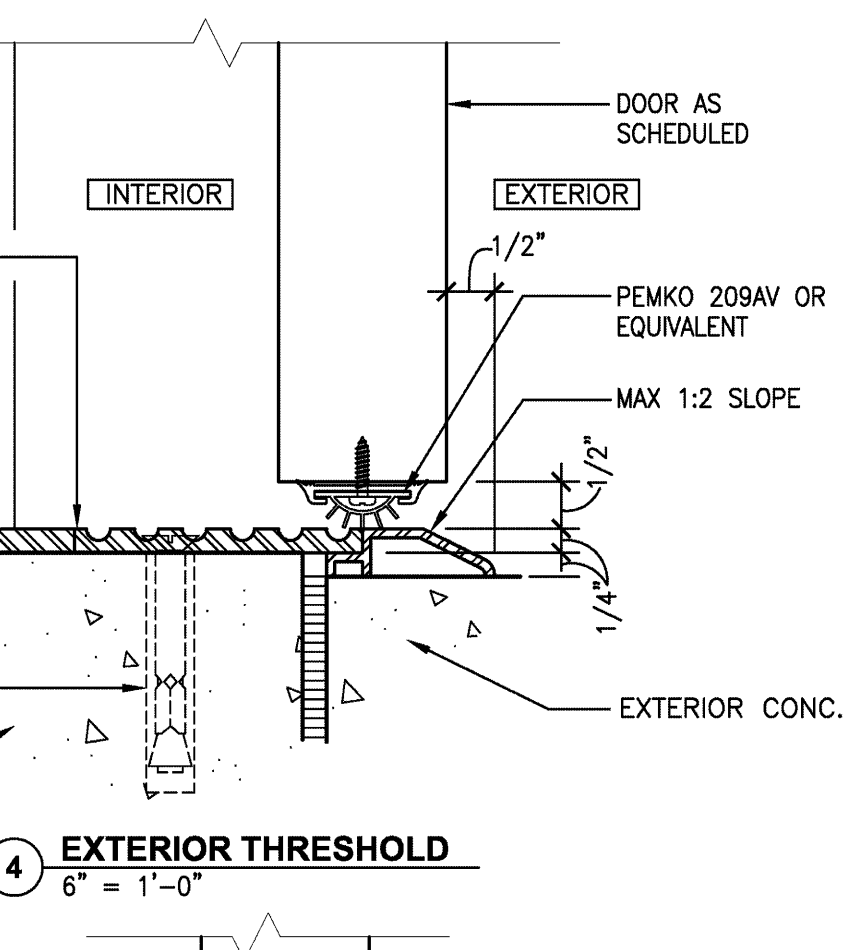
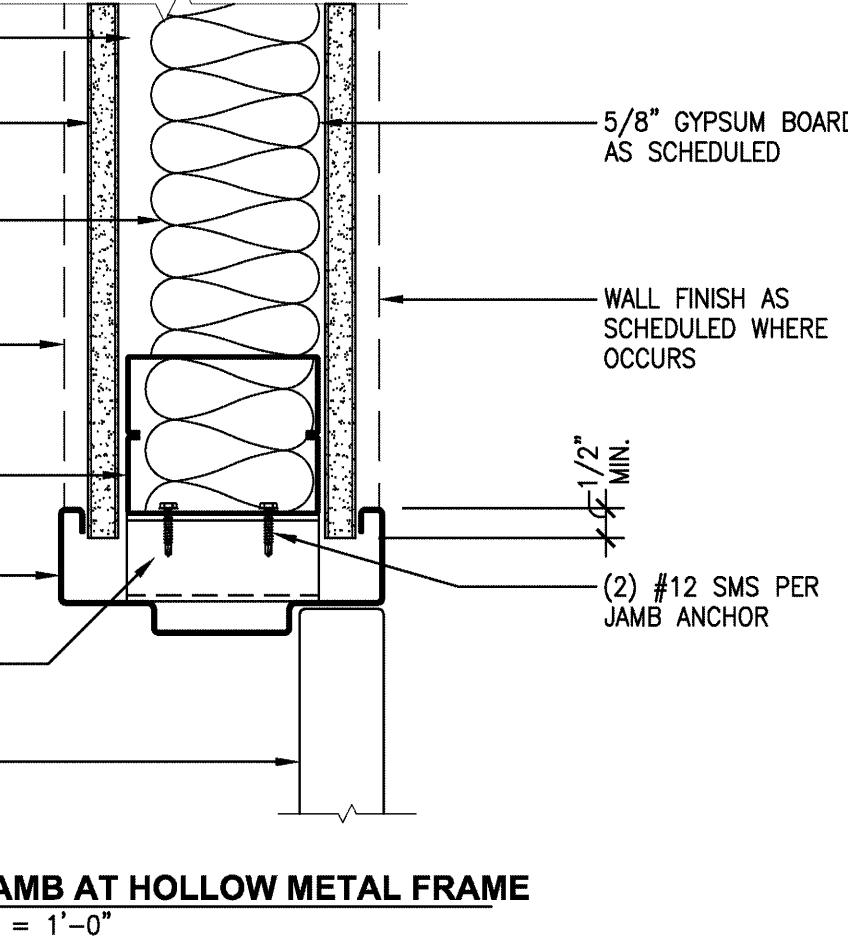
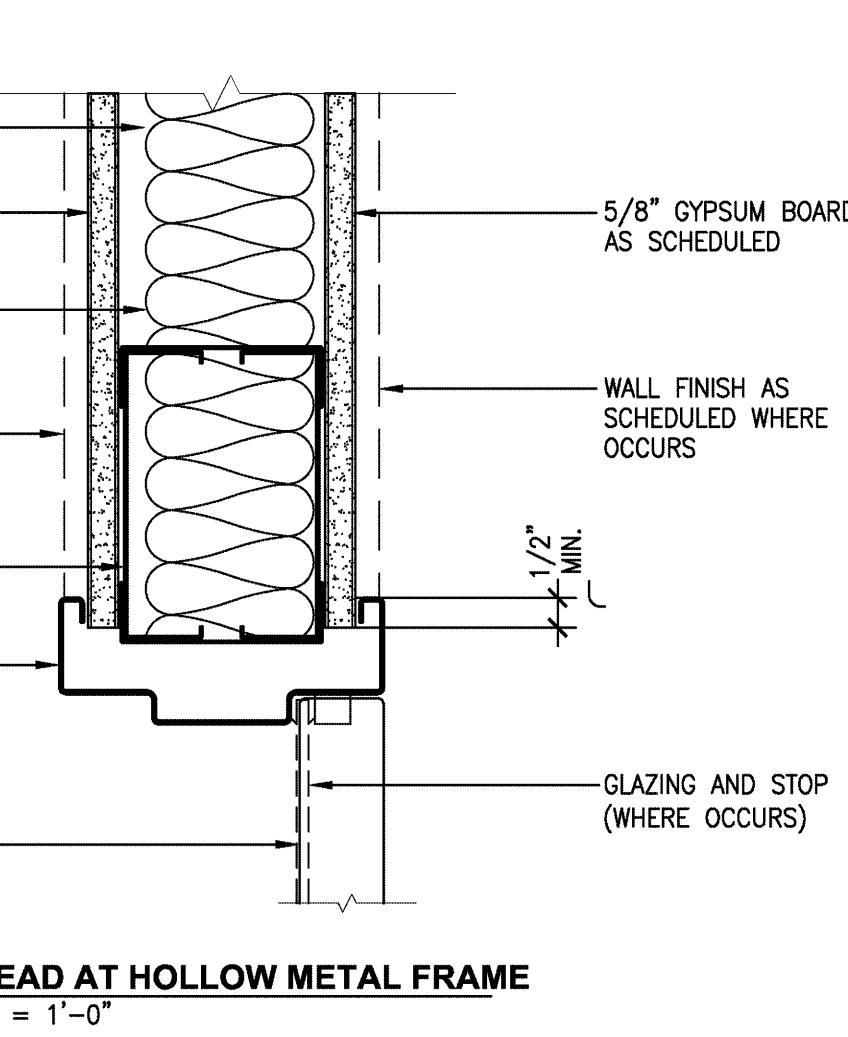
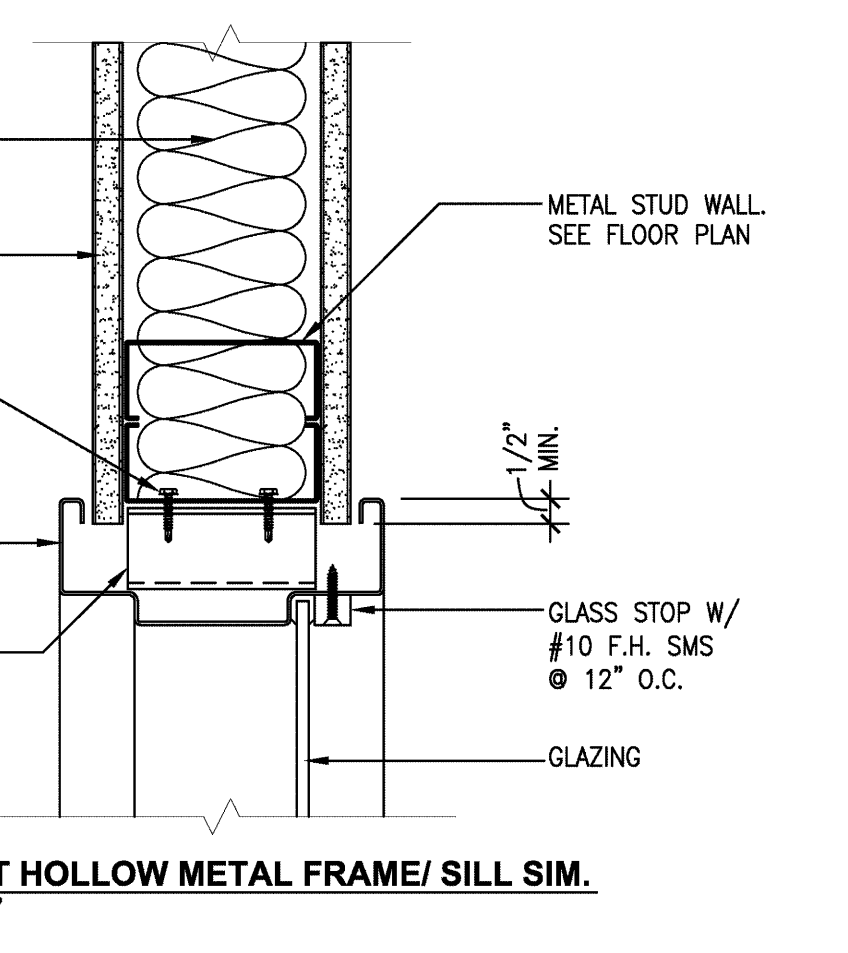
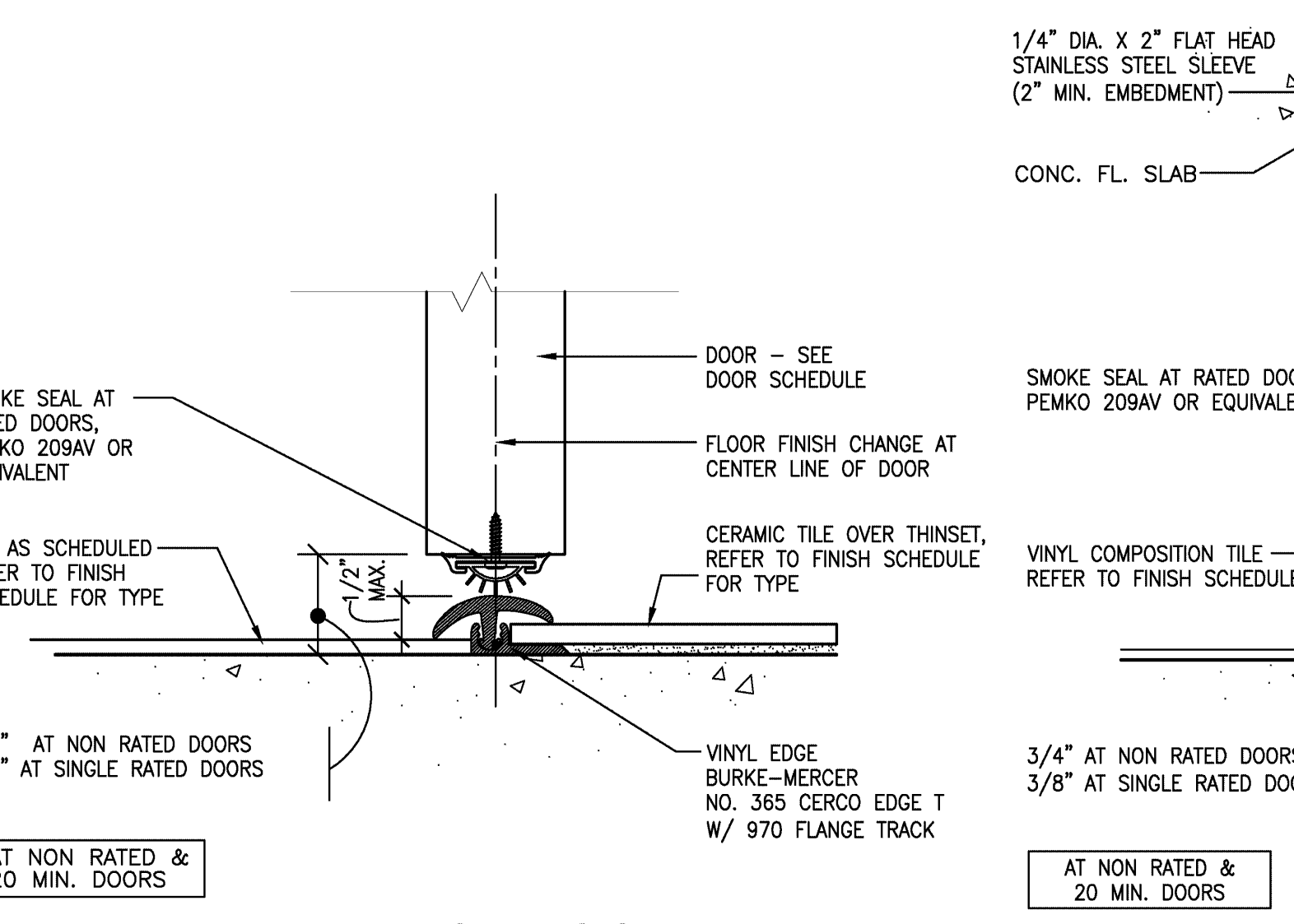
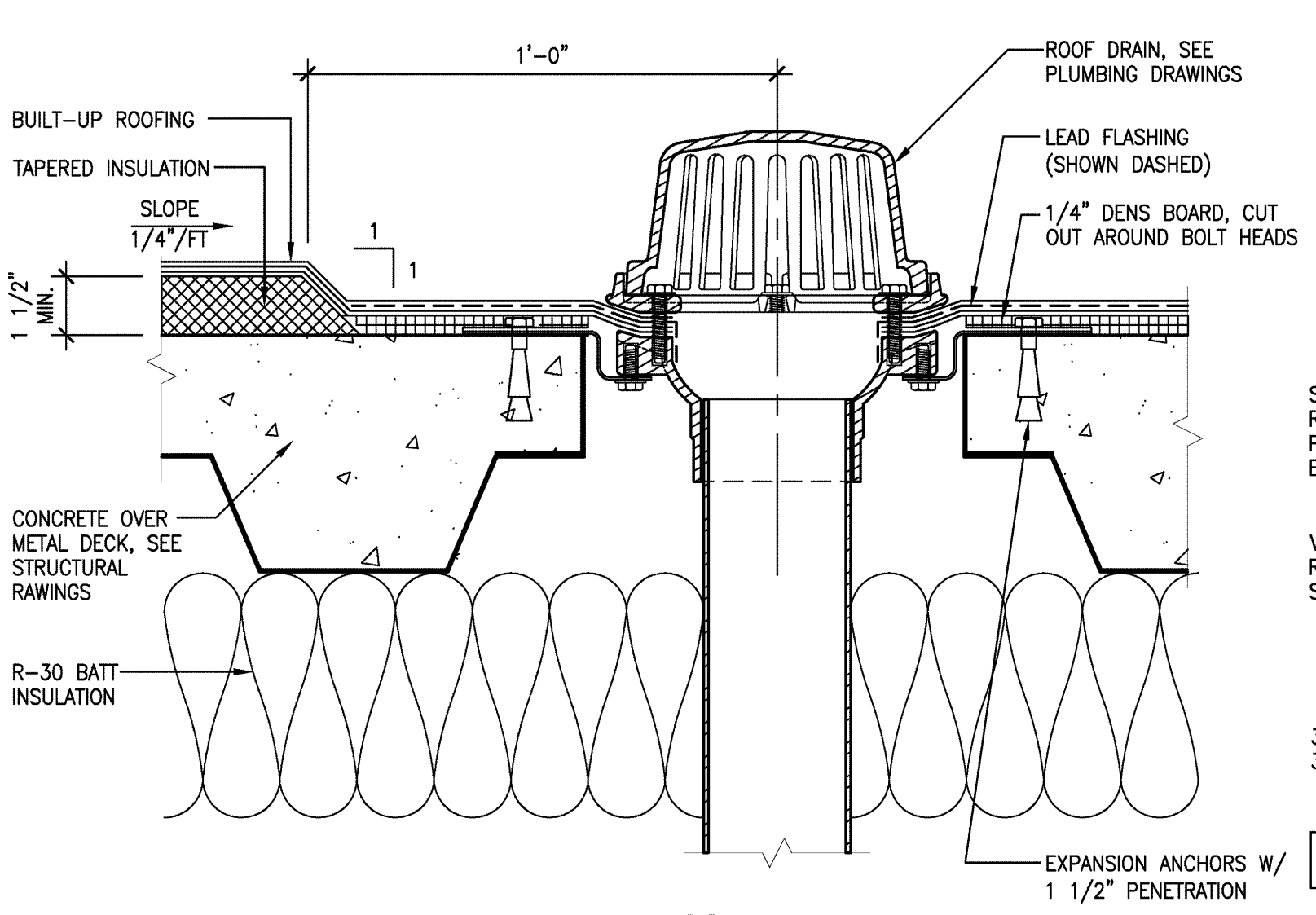
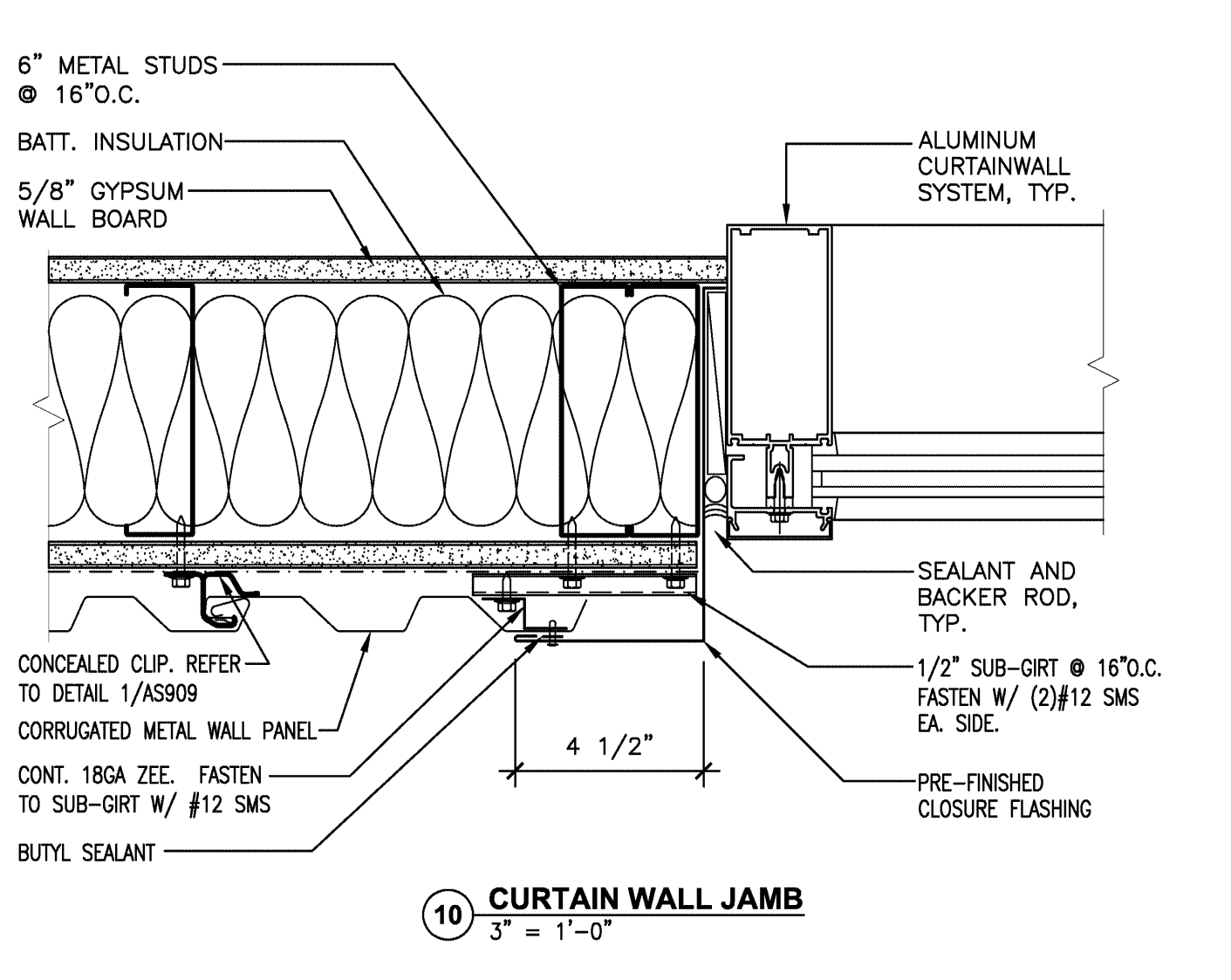
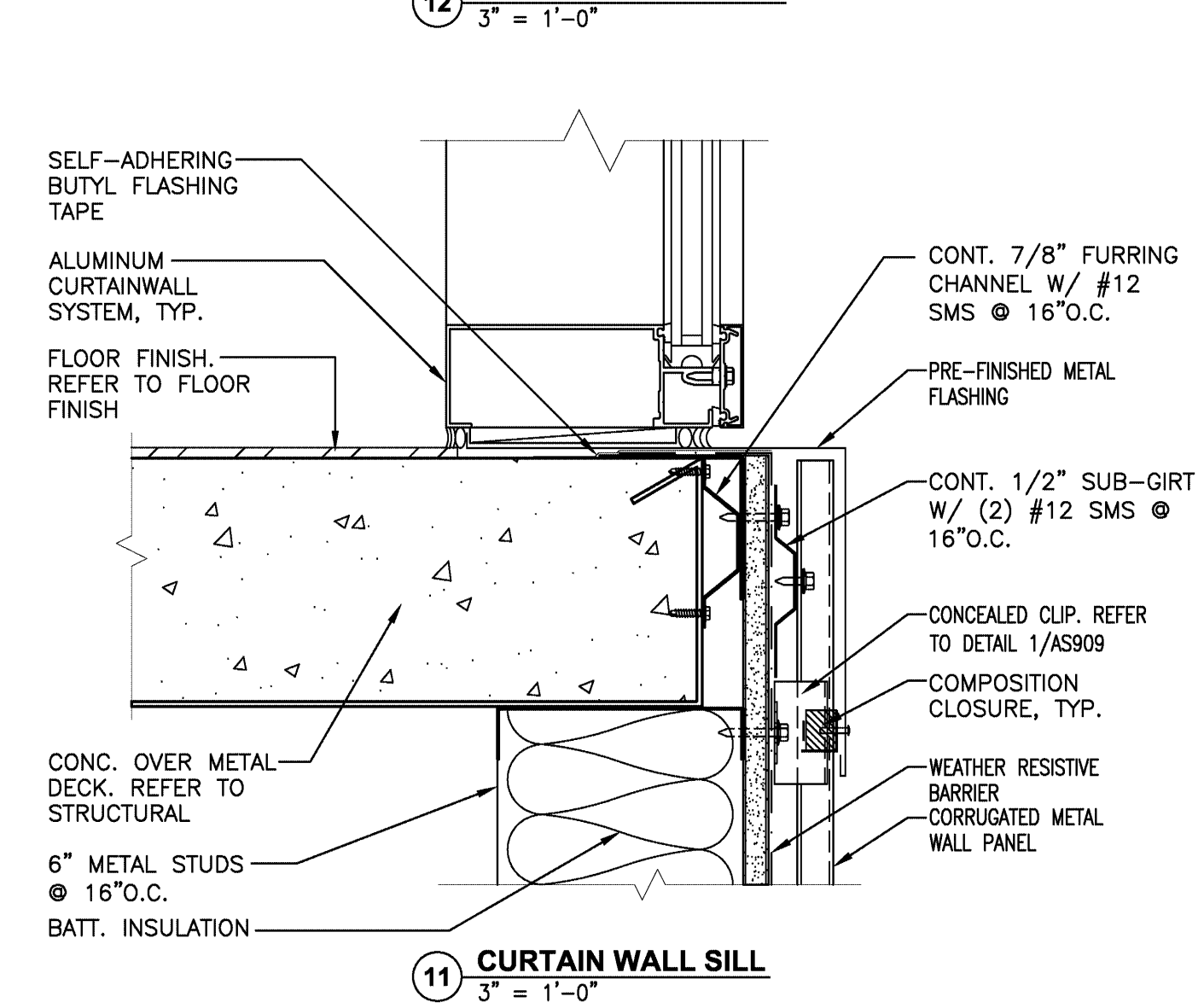
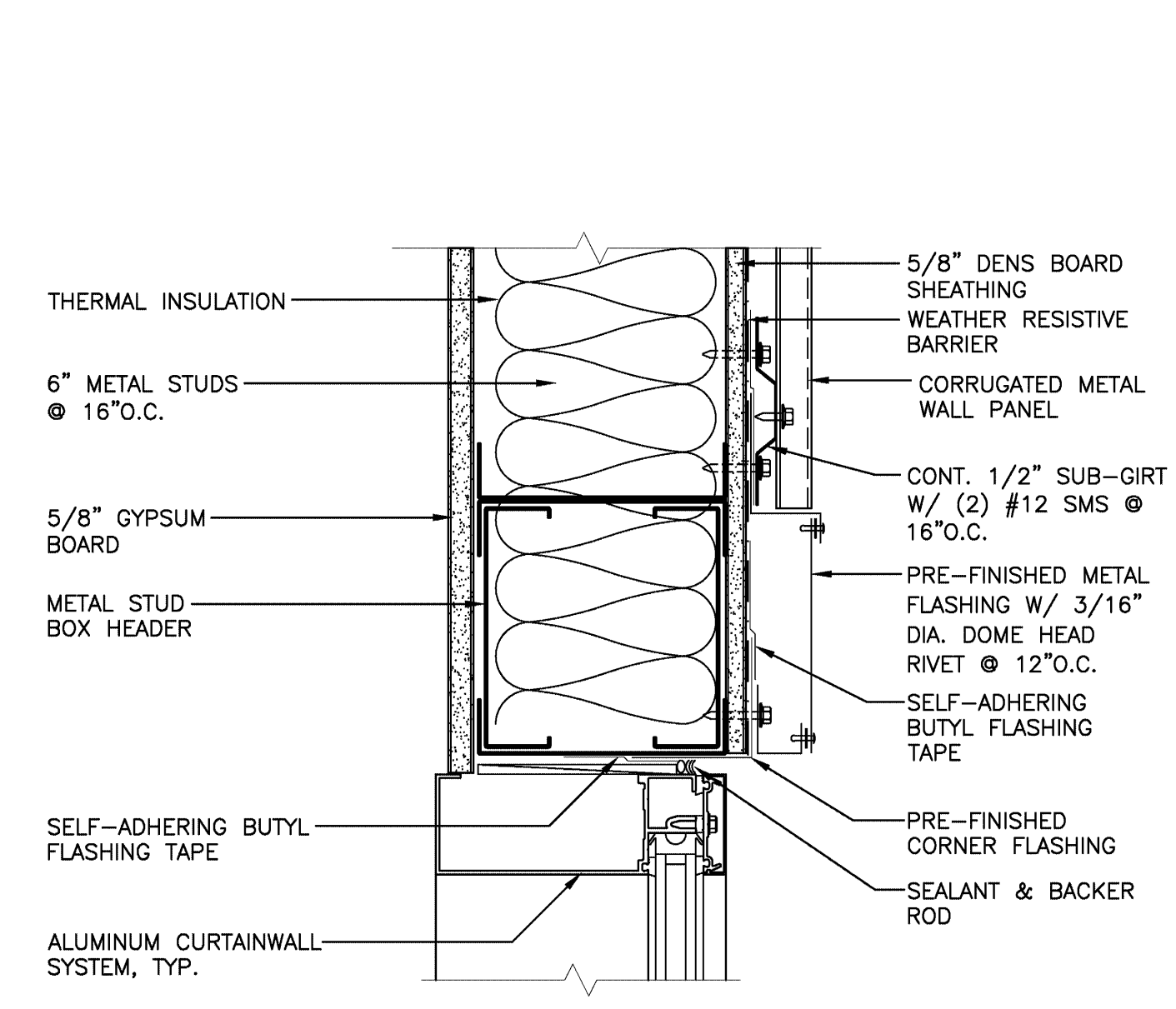
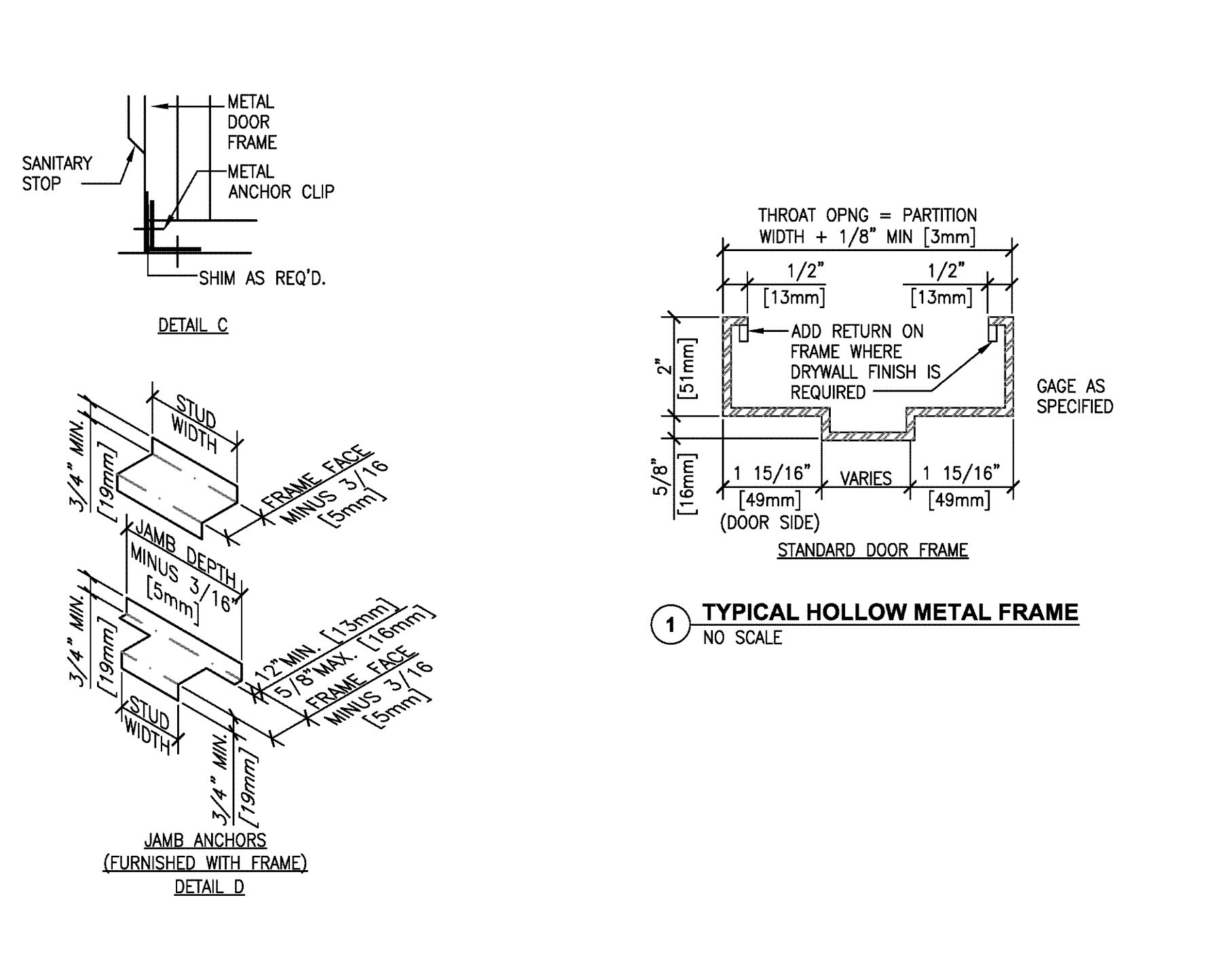
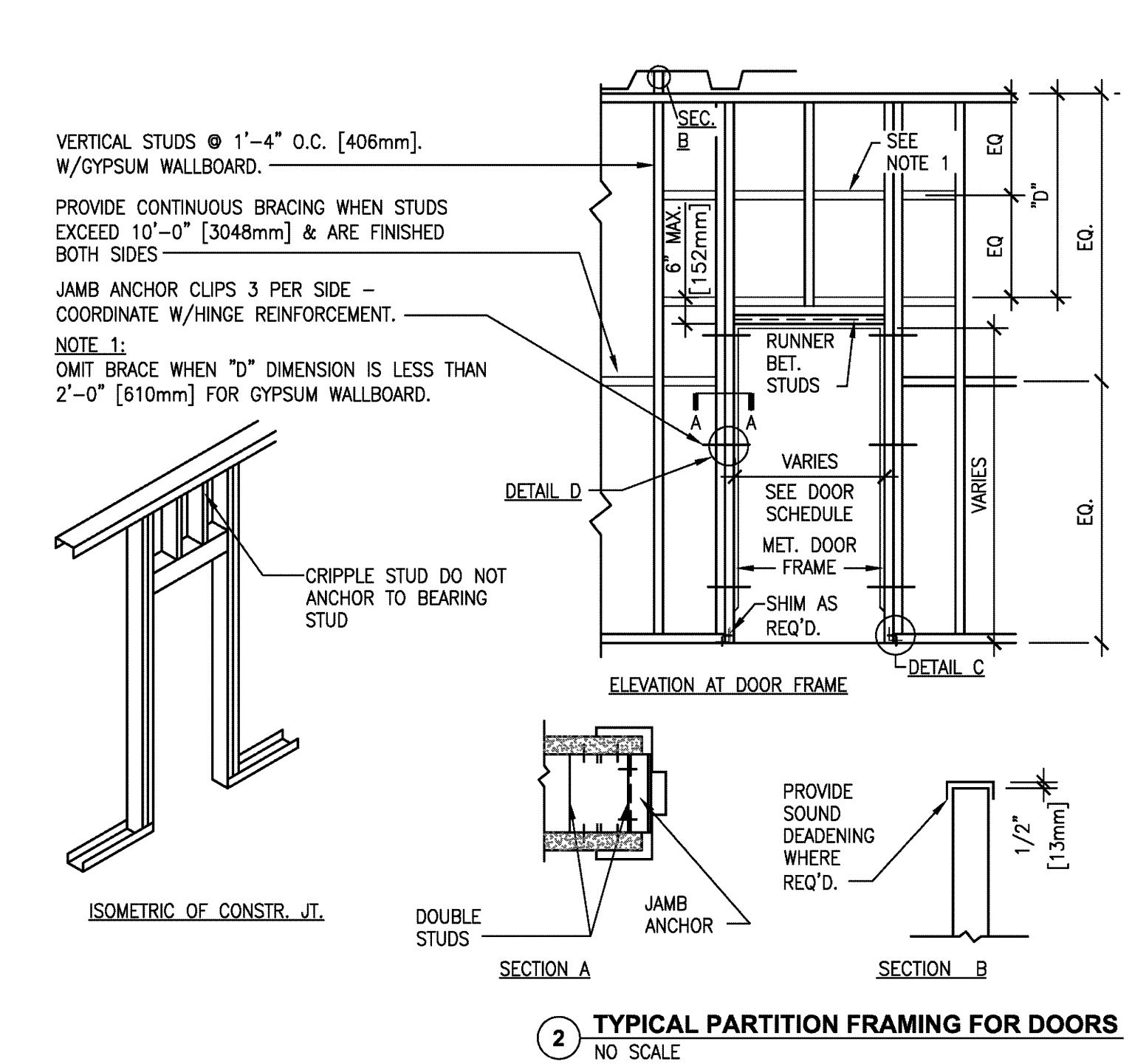


three inches = one foot
one and one half inches = one foot
one inch = one foot
three quarters inch = one foot
one half inch = one foot
three eighths inch = one foot
one quarter inch = one foot
one eighth inch = one foot



THIRD FLOOR DOOR SCHEDULE																			
DOOR NUMBER	NOMINAL SIZE			DOOR					LOUVER		FRAME				DETAILS			HARDWARE GROUP	FIRE RATING (MINUTES)
	WIDTH	HEIGHT	THICKNESS	TYPE	MATERIAL	FACING / FINISH	COLOR	GLASS	WIDTH	HEIGHT	TYPE	MATERIAL	FINISH	GLASS	HEAD	JAMB	THRESHOLD		
300A	3'-8"	7'-0"	1 3/4"	(E) 2	HM	-	-	(E)WG	-	-	(E) A	HM	MP	-	-	-	-	11	90
300B	3'-8"	7'-0"	1 3/4"	(E) 2	HM	-	-	(E)WG	-	-	(E) C	HM	MP	WG	-	-	-	11	90
301A	3'-0"	7'-0"	1 3/4"	(E) 1	WD	-	-	-	-	-	(E) A	HM	MP	-	-	-	-	03A	-
302A	3'-0"	7'-0"	1 3/4"	1	WD	-	-	-	-	-	A	HM	MP	-	6/AS902	5/AS902	8/AS902	12	-
303A	3'-0"	7'-0"	1 3/4"	(E) 1	WD	-	-	(E)WG	-	-	(E) A	HM	MP	-	-	-	-	13A	-
304A	3'-0"	7'-0"	1 3/4"	(E) 1	WD	-	-	-	-	-	(E) A	HM	MP	-	-	-	8/AS902	02	-
305A	3'-0"	7'-0"	1 3/4"	(E) 1	WD	-	-	-	-	-	(E) A	HM	MP	-	-	-	-	03A	-
305B	3'-0"	7'-0"	1 3/4"	(E) 1	WD	-	-	-	-	-	(E) A	HM	MP	-	-	-	-	03A	-
306A	3'-6"	7'-0"	1 3/4"	(E) 1	WD	-	-	-	-	-	(E) A	HM	MP	-	-	-	3/AS902	07A	-
306B	3'-6"	7'-0"	1 3/4"	(E) 1	WD	-	-	-	-	-	(E) A	HM	MP	-	-	-	-	07A	-
306C	3'-0"	7'-0"	1 3/4"	(E) 1	WD	-	-	-	-	-	(E) A	HM	MP	-	-	-	-	13B	90
307A	3'-0"	7'-0"	1 3/4"	(E) 1	WD	-	-	-	-	-	(E) A	HM	MP	-	-	-	-	15	-
308A	4'-8"	7'-0"	1 3/4"	(E) 1	WD	-	-	-	20"	11"	(E) B	HM	MP	-	-	-	-	17	-
309A	3'-0"	7'-0"	1 3/4"	(E) 1	WD	-	-	-	28"	11"	(E) A	HM	MP	-	-	-	-	13A	-
310A	3'-0"	7'-0"	1 3/4"	1	WD	-	-	-	-	-	A	HM	MP	-	6/AS902	5/AS902	8/AS902	12	-
310B	3'-0"	7'-0"	1 3/4"	1	WD	-	-	-	-	-	A	HM	MP	-	6/AS902	5/AS902	8/AS902	12	-
311A	3'-0"	7'-0"	1 3/4"	(E) 1	WD	-	-	-	-	-	(E) A	HM	MP	-	-	-	-	15	-
312A	3'-0"	7'-0"	1 3/4"	(E) 1	WD	-	-	-	-	-	(E) A	HM	MP	-	-	-	-	15	-
313A	3'-0"	7'-0"	1 3/4"	(E) 1	WD	-	-	-	-	-	(E) A	HM	MP	-	-	-	-	15	-
314A	3'-0"	7'-0"	1 3/4"	(E) 1	WD	-	-	-	-	-	(E) A	HM	MP	-	-	-	-	15	-
315A	3'-0"	7'-0"	1 3/4"	(E) 1	WD	-	-	-	-	-	(E) A	HM	MP	-	-	-	-	15	-
316A	3'-0"	7'-0"	1 3/4"	(E) 1	WD	-	-	-	-	-	(E) A	HM	MP	-	-	-	-	15	-
317A	3'-0"	7'-0"	1 3/4"	(E) 1	WD	-	-	-	-	-	(E) A	HM	MP	-	-	-	-	15	-
318A	3'-0"	7'-0"	1 3/4"	(E) 1	WD	-	-	-	-	-	(E) A	HM	MP	-	-	-	-	15	-
319A	3'-0"	7'-0"	1 3/4"	(E) 1	WD	-	-	-	-	-	(E) A	HM	MP	-	-	-	-	15	-
320A	3'-0"	7'-0"	1 3/4"	(E) 1	WD	-	-	-	-	-	(E) A	HM	MP	-	-	-	-	15	-
321A	3'-0"	7'-0"	1 3/4"	1	WD	-	-	-	-	-	A	HM	MP	-	6/AS902	5/AS902	-	19	-
321B	3'-0"	7'-0"	1 3/4"	(E) 1	WD	-	-	-	-	-	(E) A	HM	MP	-	-	-	-	06	-
322A	3'-0"	7'-0"	1 3/4"	(E) 1	WD	-	-	-	-	-	(E) A	HM	MP	-	-	-	-	15	-
323A	3'-0"	7'-0"	1 3/4"	(E) 1	WD	-	-	-	-	-	(E) A	HM	MP	-	-	-	-	15	-
324A	3'-0"	7'-0"	1 3/4"	(E) 1	WD	-	-	-	-	-	(E) A	HM	MP	-	-	-	-	15	-
325A	3'-0"	7'-0"	1 3/4"	(E) 1	WD	-	-	-	-	-	(E) A	HM	MP	-	-	-	-	15	-
326A	3'-0"	7'-0"	1 3/4"	(E) 1	WD	-	-	-	-	-	(E) A	HM	MP	-	-	-	-	15	-
327A	3'-6"	7'-0"	1 3/4"	(E) 1	WD	-	-	-	-	-	(E) A	HM	MP	-	-	-	-	15	-
328A	3'-6"	7'-0"	1 3/4"	(E) 1	WD	-	-	-	-	-	(E) A	HM	MP	-	-	-	-	02	-
329B	3'-0"	7'-0"	1 3/4"	(E) 1	WD	-	-	-	-	-	(E) A	HM	MP	-	-	-	-	15	-
331A	6'-0"	7'-0"	1 3/4"	PR 1	WD	-	-	-	-	-	B	HM	MP	-	6/AS902	5/AS902	3/AS902	21	-
332A	3'-0"	7'-0"	1 3/4"	1	WD	-	-	-	-	-	A	HM	MP	-	6/AS902	5/AS902	3/AS902	18	-
332B	3'-0"	7'-0"	1 3/4"	1	WD	-	-	-	-	-	A	HM	MP	-	6/AS902	5/AS902	-	18	-
333A	3'-0"	7'-0"	1 3/4"	1	WD	-	-	-	-	-	A	HM	MP	-	6/AS902	5/AS902	3/AS902	18	-
333B	3'-0"	7'-0"	1 3/4"	A1	ALM	-	-	T2	-	-	-	ALM	FF	-	28/AS910	31 & 32 / AS910	-	19	-
334A	3'-0"	7'-0"	1 3/4"	1	WD	-	-	-	-	-	A	HM	MP	-	6/AS902	5/AS902	-	19	-
335A	3'-0"	7'-0"	1 3/4"	1	WD	-	-	-	-	-	A	HM	MP	-	6/AS902	5/AS902	3/AS902	18	-
335B	3'-0"	7'-0"	1 3/4"	A1	ALM	-	-	T2	-	-	-	ALM	FF	-	28/AS910	31 & 32 / AS910	-	19	-
336A	3'-0"	7'-0"	1 3/4"	1	WD	-	-	-	-	-	A	HM	MP	-	6/AS902	5/AS902	-	19	-
337A	3'-0"	7'-0"	1 3/4"	1	WD	-	-	-	-	-	A	HM	MP	-	6/AS902	5/AS902	-	19	-
338A	3'-6"	7'-0"	1 3/4"	1	WD	-	-	-	-	-	A	HM	MP	-	6/AS902	5/AS902	3/AS902	19A	-
339A	3'-6"	7'-0"	1 3/4"	1	WD	-	-	-	-	-	A	HM	MP	-	6/AS902	5/AS902	3/AS902	19A	-
340A	3'-6"	7'-0"	1 3/4"	A1	ALM	-	-	T2	-	-	-	ALM	FF	-	28/AS910	32/AS910	29/AS910	22	-



Revisions

Date

CONSULTANTS:

ARCHITECT/ENGINEERS:

HMC Architects

1827 E. Fir Avenue, Studio 103 / Fresno, CA 93720
T 559 322 2444 / www.hmcarchitects.com

Drawing Title

DOOR SCHEDULES

Approved Project Director

Project Title

BUILDING 24
SEISMIC CORRECTION
AND ADDITION

Location

VAMC FRESNO, CA

Date

October 14, 2011

Checked

BB

Drawn

CLO

Project Number

570-215

Building Number

24

Drawing Number

AS902

Dwg. 87 of 180

Office of Construction and Facilities Management

Department of Veterans Affairs