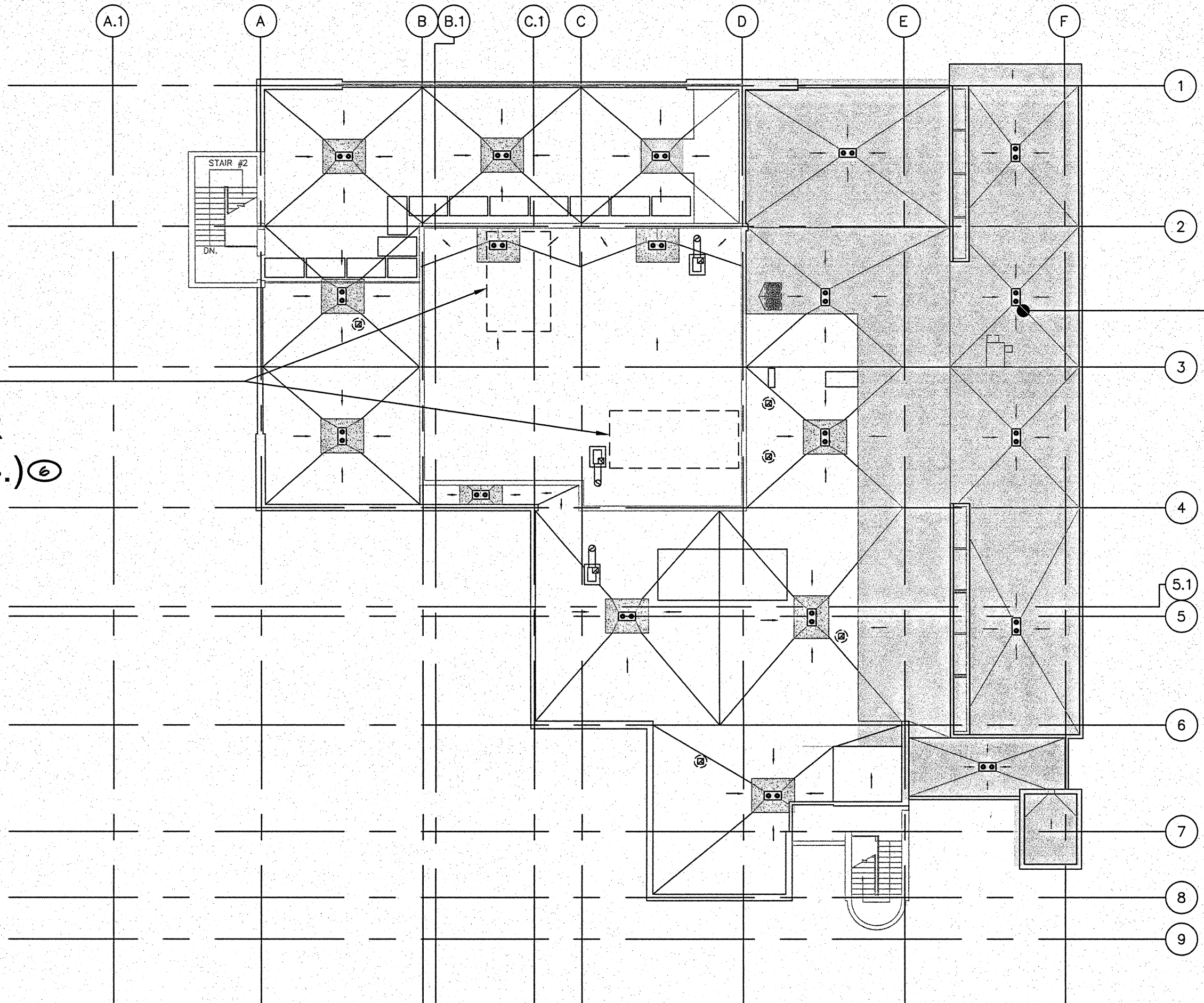


one eighth inch = one foot
one quarter inch = one foot
three eighths inch = one foot
one half inch = one foot
three quarters inch = one foot
one inch = one foot
one and one half inches = one foot
two inches = one foot
three inches = one foot
four inches = one foot
six inches = one foot
one foot = one foot

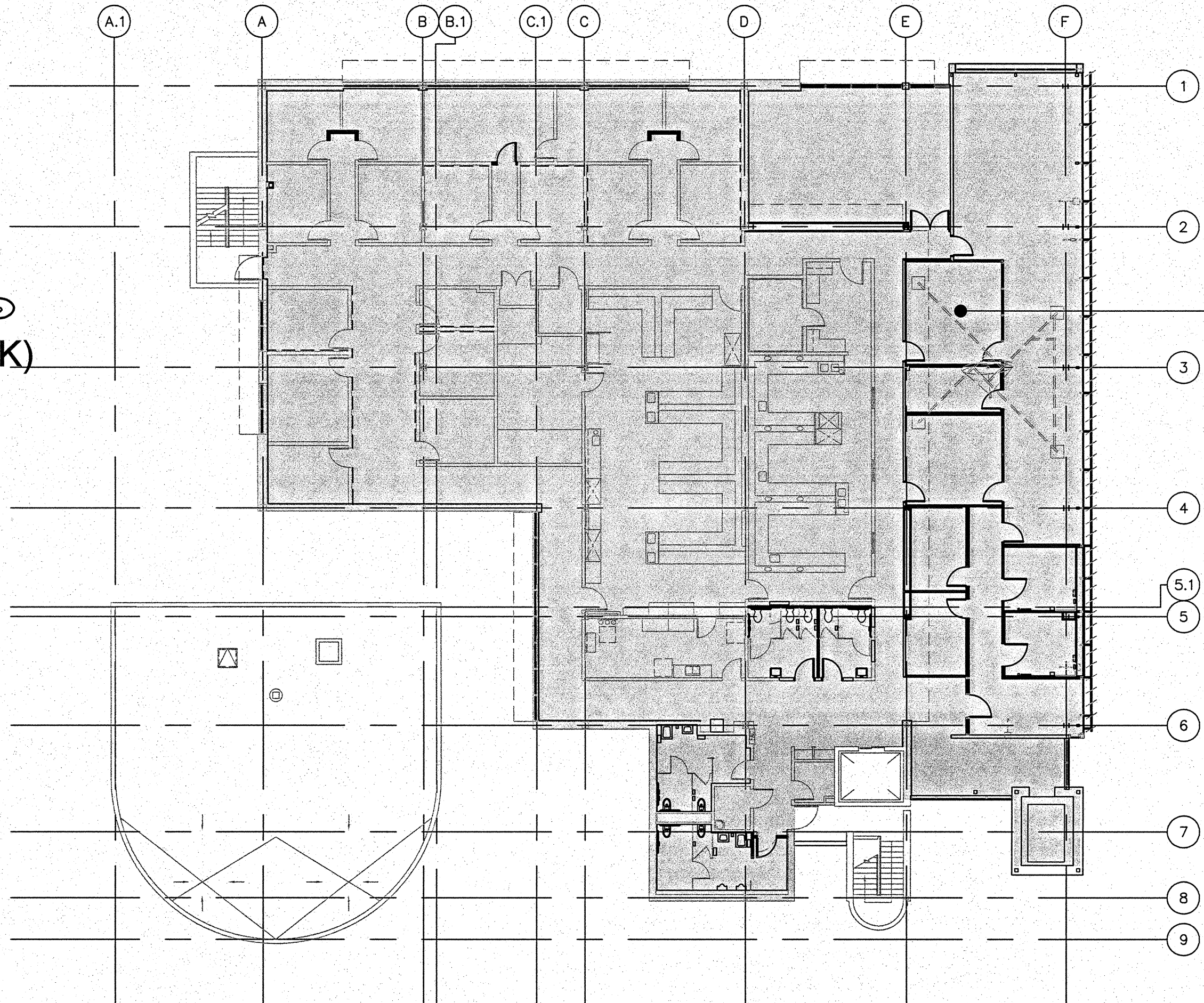
KEY NOTES	
1	SEE SHEET PP100, KEYNOTE 1 FOR BASEMENT WORK PHASING.
2	SEE SHEET PD101 & PP101 FOR THIS PHASE WORK.
3	SEE SHEET PD102 AND PP102 FOR THIS PHASE WORK.
4	SEE SHEET PD103 AND PP103 FOR THIS PHASE WORK.
5	NO PLUMBING WORK IN THIS AREA.
6	SEE SHEET PD104, PD105, PP104 & PP105 FOR THIS PHASE WORK.



PHASE 1B
(REFURBISH AIR
HANDLERS 2 & 4.) 6

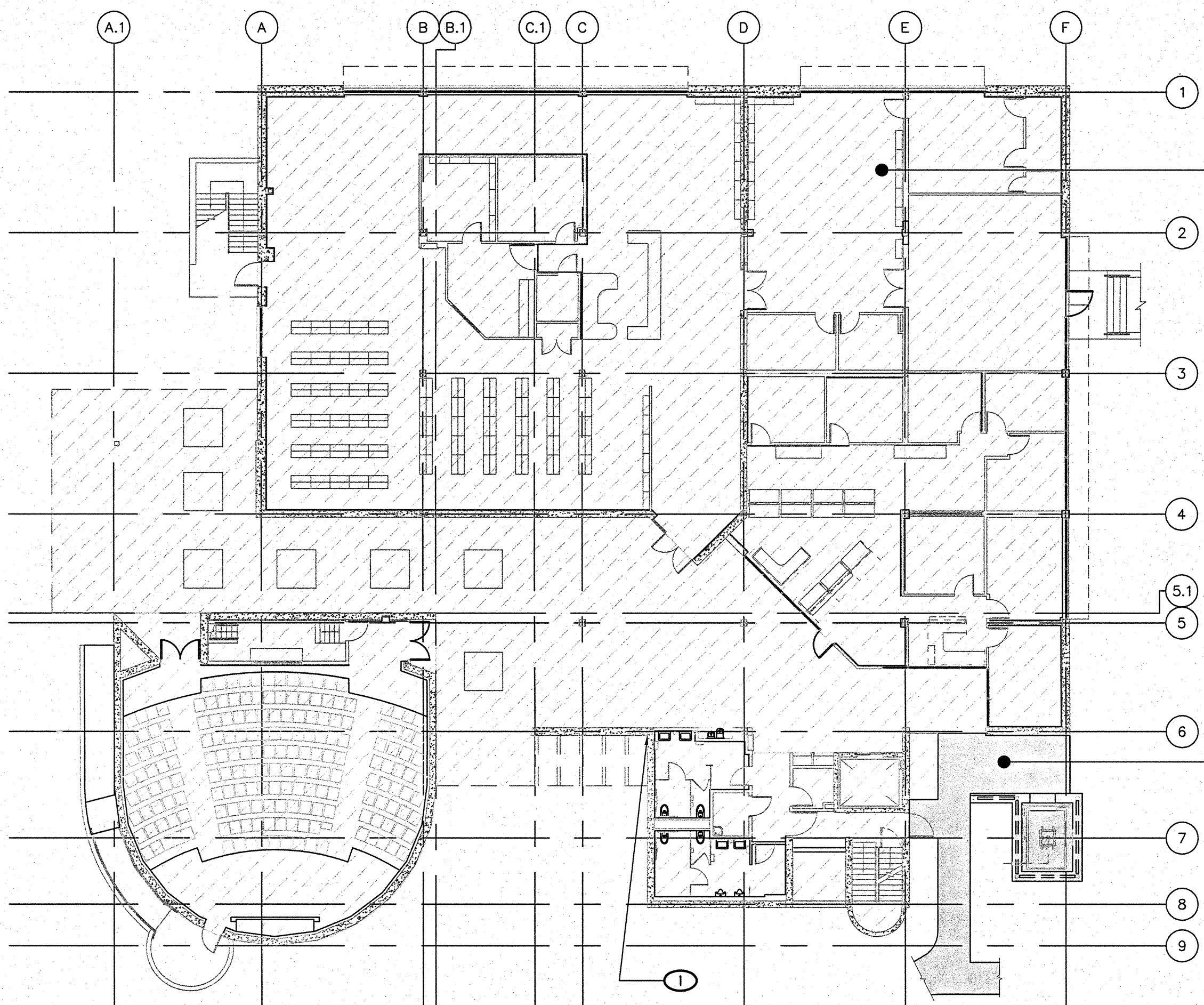
PHASE 1 A 6
(ROOF WORK)

3 ROOF - CONSTRUCTION PHASING PLAN



PHASE 1 A
(3RD FLOOR
WORK) 3

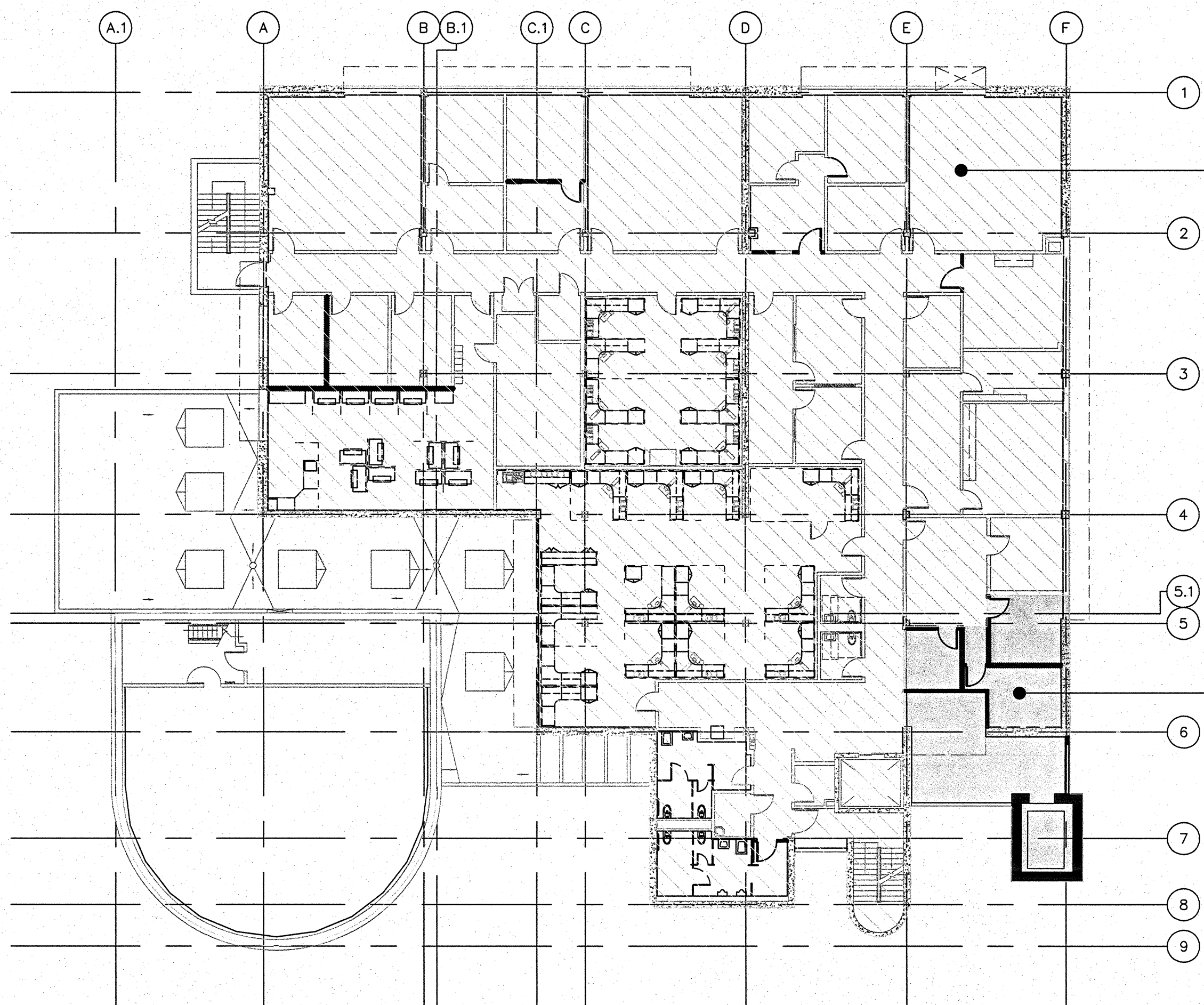
1 THIRD FLOOR - CONSTRUCTION PHASING PLAN



PHASE 3
(1ST FLOOR
WORK) 2

PHASE 1A
(ELEVATOR &
WALKWAY
WORK) 5

4 FIRST FLOOR - CONSTRUCTION PHASING PLAN

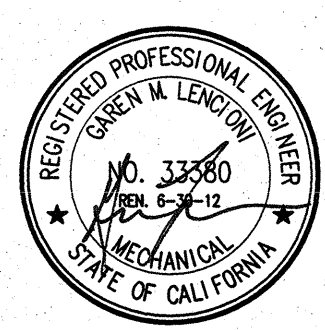


PHASE 2
(2ND FLOOR
WORK) 3

PHASE 1A
(ELEVATOR &
PARTIAL 2ND
FLOOR
REMODEL
WORK) 5

2 SECOND FLOOR - CONSTRUCTION PHASING PLAN

CONSULTANTS:



LP Consulting Engineers, Inc.
895 W. Ashlan Ave. Suite 101 Clovis, CA 93612
p 559-348-2130 f 559-348-2131
www.lpengineers.com
Job #: 10-1096



ARCHITECT/ENGINEERS:

HMC Architects

1827 E. Fir Avenue, Studio 103 / Fresno, CA 93720
T 559 322 2444 / www.hmcarchitects.com

Drawing Title
PLUMB. CONSTRUCTION PHASING PLAN

Approved Project Director

Project Title
**BUILDING 24
SEISMIC CORRECTION
AND ADDITION**

Location
VAMC FRESNO, CA

Date
January 31, 2012

Checked
GML

Drawn
DN

Project Number
570-215

Building Number
24

Drawing Number
PP002

Dwg. 104 of 180

Office of
Construction
and Facilities
Management

