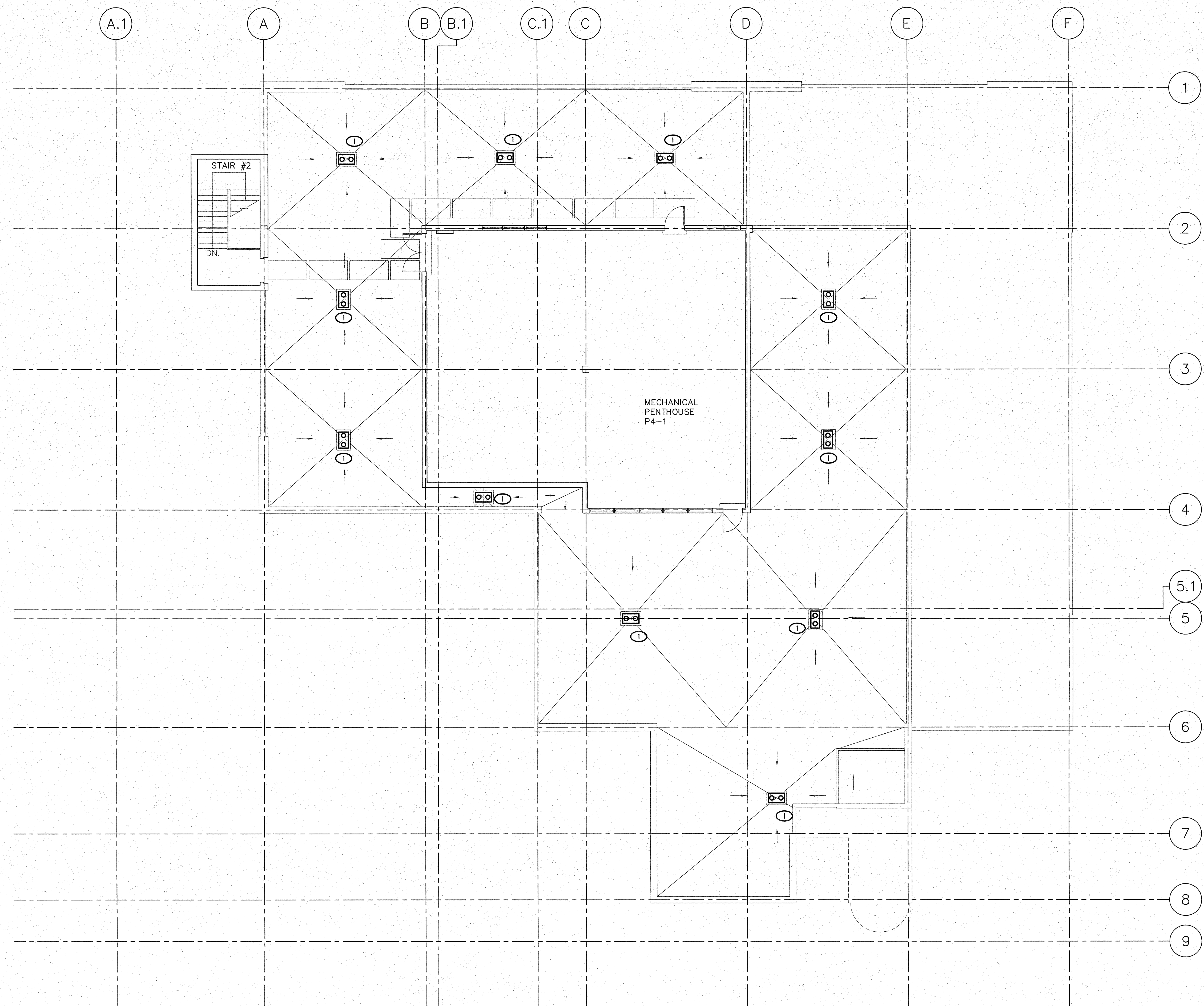


one eighth inch = one foot
one quarter inch = one foot
three eighths inch = one foot
one half inch = one foot
three quarters inch = one foot
one inch = one foot
one and one half inches = one foot
two inches = one foot
three inches = one foot
four inches = one foot

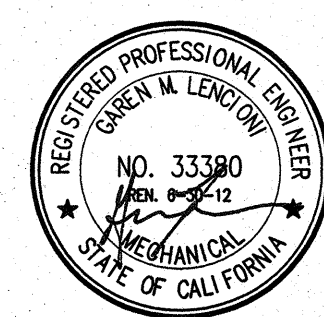



KEY NOTES

① REMOVE (E) ROOF DRAIN, 3" PIPE TO REMAIN FOR CONNECTION TO NEW ROOF DRAIN.



① PENTHOUSE PLUMBING DEMO. FLOOR AND ROOF PLAN
SCALE: 1/8" = 1'-0"



Revisions <table border="1"><thead><tr><th>No.</th><th>Description</th><th>Date</th></tr></thead><tbody><tr><td> </td><td> </td><td> </td></tr><tr><td> </td><td> </td><td> </td></tr><tr><td> </td><td> </td><td> </td></tr><tr><td> </td><td> </td><td> </td></tr><tr><td> </td><td> </td><td> </td></tr><tr><td> </td><td> </td><td> </td></tr><tr><td> </td><td> </td><td> </td></tr><tr><td> </td><td> </td><td> </td></tr><tr><td> </td><td> </td><td> </td></tr></tbody></table>	No.	Description	Date																												CONSULTANTS:  LP Consulting Engineers, Inc. 895 W. Ashland Ave., Suite 101 Clovis, CA 93612 p 559-348-2130 f 559-348-2131 www.lpengines.com Job #: 10-1096		ARCHITECT/ENGINEERS:  HMC Architects 1827 E. Fir Avenue, Studio 103 / Fresno, CA 93720 T 559 322 2444 / www.hmcarchitects.com	Drawing Title PENTHOUSE PLUMBING DEMO. FLOOR AND ROOF PLAN Approved: Project Director	Project Title BUILDING 24 SEISMIC CORRECTION AND ADDITION Location VAMC FRESNO, CA Date January 31, 2012 Checked K.K. Drawn DN.	Project Number 570-215 Building Number 24 Drawing Number PD104 Dwg. 108 of 180	Office of Construction and Facilities Management 
	No.	Description	Date																																		