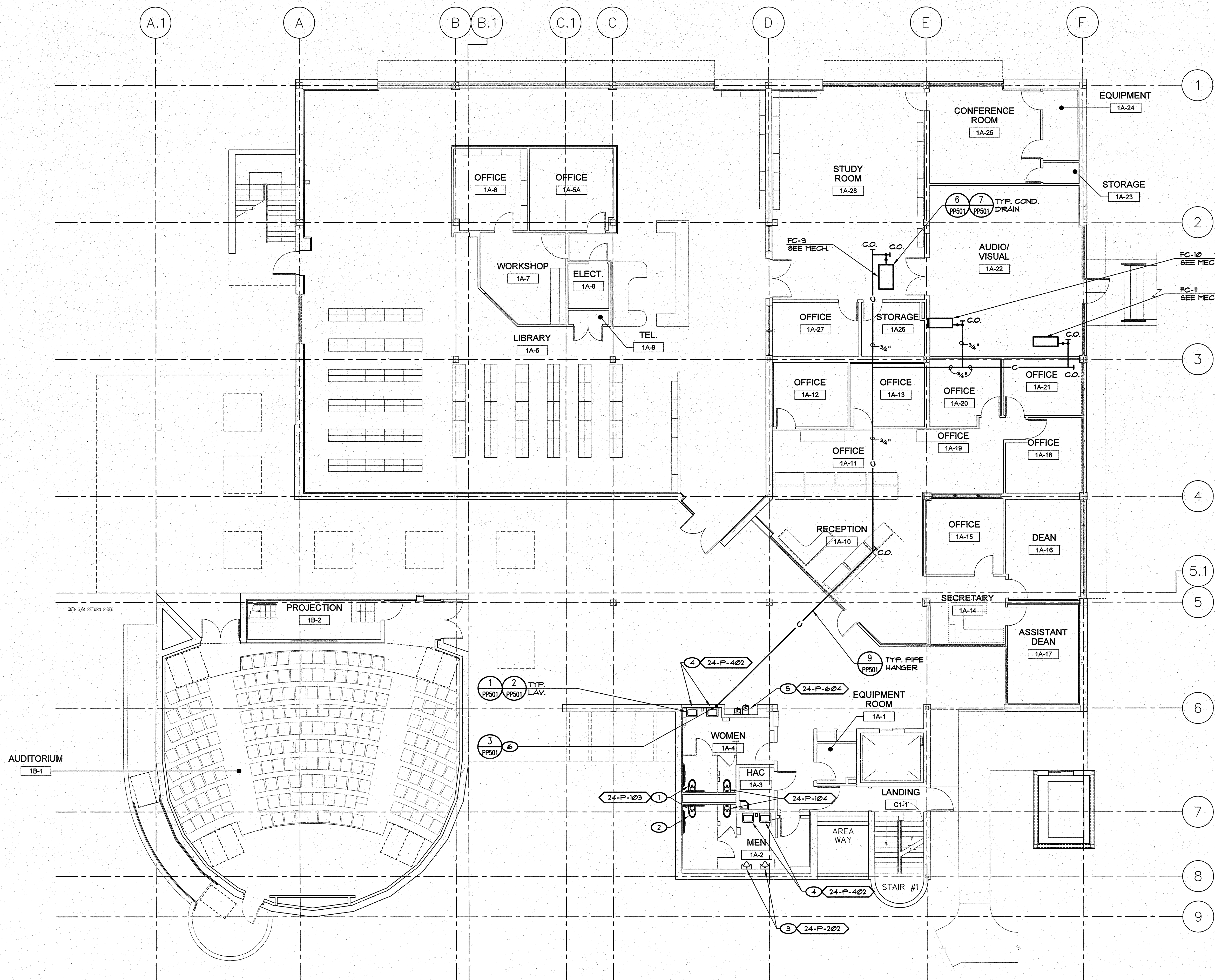


three inches = one foot
one and one half inches = one foot
one inch = one foot
three quarters inch = one foot
one half inch = one foot
one quarter inch = one foot
one eighth inch = one foot
one sixteenth inch = one foot



- KEY NOTES**
 - 1 REPLACE (E) WATER CLOSET WITH RETROFIT HEIGHT WALL MOUNT WATER CLOSET.
 - 2 REROUTE WATER CONNECTION TO OPPOSITE SIDE OF WATER CLOSET. ROTATE FLUSH VALVE AROUND 180° SO VALVE HANDLE IS AT THE WIDE SIDE OF STALL.
 - 3 REPLACE (E) WALL MOUNT URINAL WITH UFAS COMPLIANT MODEL.
 - 4 PROVIDE AND INSTALL (TRUEBRO HAND) LAV-GUARD #0211 OR EQUAL) INSULATED RUBBER WRAP ON P-TRAP AND ANGLE STOP ASSEMBLIES UNDER (E) LAVATORY.
 - 5 REPLACE (E) SINGLE HEIGHT ELECTRIC DRINKING FOUNTAIN WITH DUAL HEIGHT REFRIGERATED DRINKING FOUNTAIN.
 - 6 3/4" CONDENSATE DRAIN IN ATTIC, SLOPE DOWN 1/4" PER FOOT. DROP DOWN INSIDE WALL AND CONNECT TO TAILPIECE AT LAVATORY.
- PLUMBING FIXTURE NOTE**

REFER TO SHEET PP600 FOR PLUMBING FIXTURE SCHEDULE.

1 FIRST FLOOR PLUMBING REMODEL PLAN
SCALE: 1/8" = 1'-0"

CONSULTANTS: 885 W. Ashton Ave. Suite 101 Clovis, CA 93612 p 559-348-2130 f 559-348-2131 www.lpeengineers.com Job #: 10-1098		ARCHITECT/ENGINEERS: 1827 E. Fir Avenue, Studio 103 / Fresno, CA 93720 T 559 322 2444 / www.hmcarchitects.com		Drawing Title FIRST FLOOR PLUMBING REMODEL PLAN Approved: Project Director		Project Title BUILDING 24 SEISMIC CORRECTION AND ADDITION Location VAMC FRESNO, CA Date January 31, 2012 Checked KK Drawn DN		Project Number 570-215 Building Number 24 Drawing Number PP101 Dwg. 111 of 180		Office of Construction and Facilities Management 	
---	--	--	--	---	--	--	--	---	--	---	--