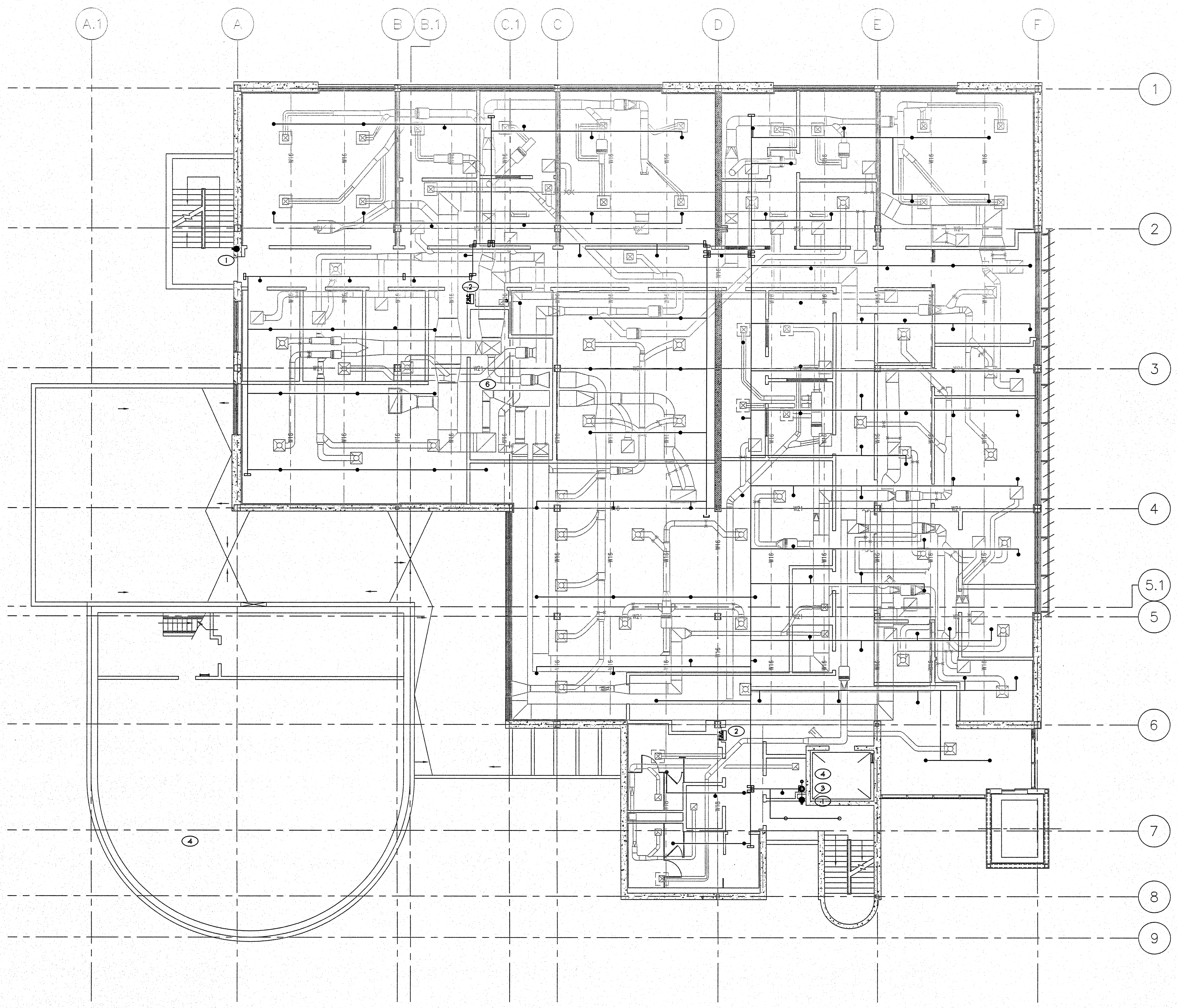


three inches = one foot  
one and one half inches = one foot  
one inch = one foot  
three quarters inch = one foot  
one half inch = one foot  
three eighths inch = one foot  
one quarter inch = one foot  
one eighth inch = one foot



1 SECOND FLOOR FIRE SPRINKLER PIPING PLAN  
1/8"=1'-0"

- KEY NOTES**
- 1 (E) CLASS 1 STANDPIPE - TO REMAIN
  - 2 FIRE HOSE RACK TO BE REMOVED
  - 3 POINT OF CONNECTION TO EXISTING 4" STANDPIPE. NEW FIRE SPRINKLER FLOOR CONTROL ASSEMBLY. SEE DETAIL ON SHEET 5/FP301
  - 4 2" DRAIN
  - 5 THIS AREA COVERED BY FIRST FLOOR PIPING. SEE SHEET FP101
  - 6 MECHANICAL SHAFT

- GENERAL NOTES**
- ITEMS SHOWN ON THIS PLAN DESCRIBE GENERAL LAYOUT REQUIREMENTS, AND ARE NOT INTENDED TO SHOW A COMPLETE LAYOUT OF REQUIRED FIRE PROTECTION SYSTEM PIPING AND COMPONENTS. REFER TO ARCHITECTURAL, MECHANICAL AND PLUMBING SHEETS, FIRE PROTECTION SPECIFICATIONS, AS WELL AS OTHER PORTIONS OF THE CONTRACT DOCUMENTS FOR ADDITIONAL COORDINATION REQUIREMENTS.
  - THE LAYOUT REQUIREMENTS DESCRIBED IN THESE PLANS SHALL BE ADHERED TO AS CLOSELY AS POSSIBLE BUT SHALL NOT SUPERSEDE CODE CONSTRAINTS AND/OR REQUIREMENTS OF AUTHORITIES HAVING JURISDICTION (AHJ'S). WHERE CODE OR AHJ REQUIREMENTS SUPERSEDE ITEMS SHOWN ON THIS PLAN, CONTRACTOR SHALL INCLUDE ALL ASSOCIATED PROVISIONS IN THE BID, AND SHALL MAKE THEM AT NO ADDITIONAL COST TO OWNER. PROPOSED DEVIATIONS FROM THIS PLAN SHALL BE SUBJECT TO ENGINEER OF RECORD REVIEW AND APPROVAL PRIOR TO IMPLEMENTATION.
  - ALL AREAS OF THE BUILDING NOT COVERED BY NOTES HEREIN SHALL BE FULLY SPRINKLERED IN ACCORDANCE WITH SPECIFICATIONS, NFPA 13, 2010 ED., CITY OF FRESNO FIRE DEPARTMENT REQUIREMENTS, DEPARTMENT OF VETERANS AFFAIRS FIRE PROTECTION DESIGN STANDARDS AND CODE REQUIREMENTS.
  - WHERE PLAN INDICATES EXPOSED FIRE SPRINKLER PIPING DIRECTION OF LAYOUT, ASSOCIATED CONNECTED FIRE SPRINKLER PIPING RUNNING IN PERPENDICULAR DIRECTIONS SHALL BE INSTALLED ONLY IN CONCEALED LOCATIONS UNLESS INDICATED OTHERWISE.
  - INSTALLING CONTRACTOR TO FIELD VERIFY ALL EXISTING CONDITIONS AND IS RESPONSIBLE FOR PREPARING A DESIGN TO ACCOMMODATE ALL EXISTING CONDITIONS.
  - EXPOSED FIRE SPRINKLER SYSTEM PIPING SHALL BE RUN STRAIGHT AND TIGHT TO UNDERSIDE OF STRUCTURAL MEMBERS, AND SHALL NOT OFFSET VERTICALLY TO DROP BELOW BEAMS.

SYMBOLS AND DESCRIPTIONS									
SYM	TYPE	FINISH	TEMP	K FACTOR	TRD	SN #	MFG	MODEL	ESCUICHEON
○	SSU	BRASS	200	5.6	1/2"	YK300	YIKING	MICROFAST	N/A
●	SSP	WHITE	150	5.6	1/2"	YK300	YIKING	MICROFAST	SEMI REC

CONSULTANTS:

LP Consulting Engineers, Inc.  
895 W. Ashlan Ave, Suite 101 Clovis, CA 93612  
p 559-348-2130 • f 559-348-2131  
www.lpeengineers.com  
Job #: 10-1096

ARCHITECT/ENGINEERS:

HMC Architects  
1827 E. Fir Avenue, Studio 103 / Fresno, CA 93720  
T 559 322 2444 / www.hmcarchitects.com

Drawing Title

SECOND FLOOR FIRE SPRINKLER PIPING PLAN

Approved Project Director

Project Title

BUILDING 24 SEISMIC CORRECTION AND ADDITION

Location

VAMC FRESNO, CA

Date

JANUARY 31, 2012

Checked

SA

Drawn

ES

Project Number

570-215

Building Number

24

Drawing Number

FP102

Dwg 122 of 180

Office of Construction and Facilities Management

Department of Veterans Affairs

VA FORM 08-6231 1 2 3 4 5 6 7 8 9