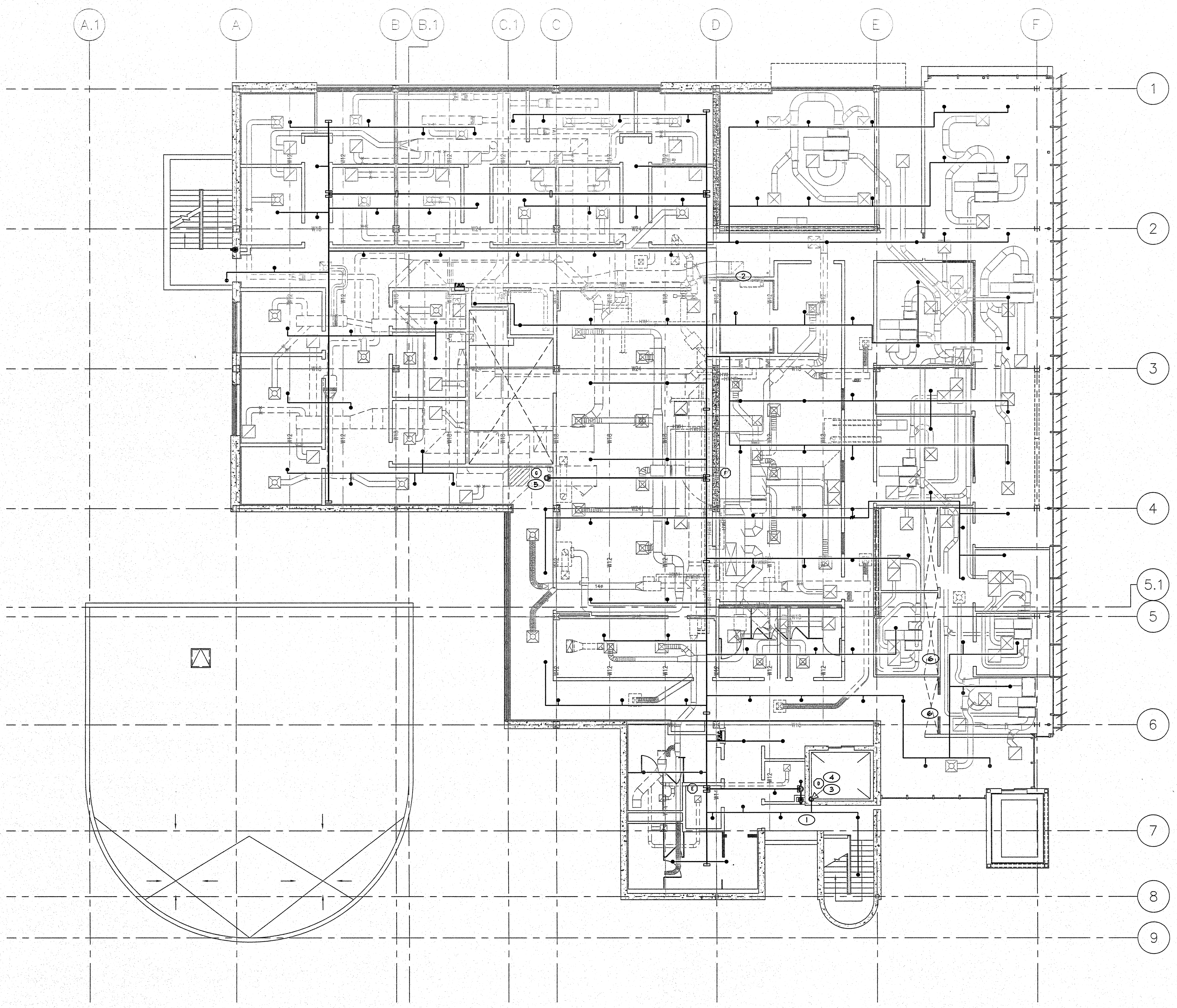


A
three inches = one foot
1
one and one half inches = one foot
6"
2
one inch = one foot
6"
C
three quarters inch = one foot
2
three eighths inch = one foot
4
one half inch = one foot
8
one quarter inch = one foot
16
one eighth inch = one foot
32



1 THIRD FLOOR FIRE SPRINKLER PIPING PLAN
1/8"=1'-0"

KEY NOTES

- 1 (E) CLASS I STANDPIPE - TO REMAIN
- 2 FIRE HOSE RACK TO BE REMOVED
- 3 POINT OF CONNECTION TO EXISTING 4" STANDPIPE. NEW FIRE SPRINKLER FLOOR CONTROL ASSEMBLY. SEE DETAIL ON SHEET 5/FP301
- 4 2" DRAIN
- 5 RISE UP TO PENTHOUSE
- 6 SKYLIGHT

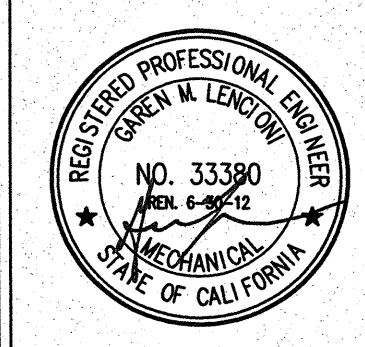
GENERAL NOTES

- ITEMS SHOWN ON THIS PLAN DESCRIBE GENERAL LAYOUT REQUIREMENTS, AND ARE NOT INTENDED TO SHOW A COMPLETE LAYOUT OF REQUIRED FIRE PROTECTION SYSTEM PIPING AND COMPONENTS. REFER TO ARCHITECTURAL, MECHANICAL AND PLUMBING SHEETS, FIRE PROTECTION SPECIFICATIONS, AS WELL AS OTHER PORTIONS OF THE CONTRACT DOCUMENTS FOR ADDITIONAL COORDINATION REQUIREMENTS.
- THE LAYOUT REQUIREMENTS DESCRIBED IN THESE PLANS SHALL BE ADHERED TO AS CLOSELY AS POSSIBLE BUT SHALL NOT SUPERSEDE CODE CONSTRAINTS AND/OR REQUIREMENTS OF AUTHORITIES HAVING JURISDICTION (A/H/S). WHERE CODE OR A/H REQUIREMENTS SUPERSEDE ITEMS SHOWN ON THIS PLAN, CONTRACTOR SHALL INCLUDE ALL ASSOCIATED PROVISIONS IN THE BID, AND SHALL MAKE THEM AT NO ADDITIONAL COST TO OWNER. PROPOSED DEVIATIONS FROM THIS PLAN SHALL BE SUBJECT TO ENGINEER OF RECORD REVIEW AND APPROVAL PRIOR TO IMPLEMENTATION.
- ALL AREAS OF THE BUILDING NOT COVERED BY NOTES HEREIN SHALL BE FULLY SPRINKLERED IN ACCORDANCE WITH SPECIFICATIONS, NFPA 13, 2010 ED., CITY OF FRESNO FIRE DEPARTMENT REQUIREMENTS, DEPARTMENT OF VETERANS AFFAIRS FIRE PROTECTION DESIGN STANDARDS AND CODE REQUIREMENTS.
- WHERE PLAN INDICATES EXPOSED FIRE SPRINKLER PIPING DIRECTION OF LAYOUT, ASSOCIATED CONNECTED FIRE SPRINKLER PIPING RUNNING IN PERPENDICULAR DIRECTIONS SHALL BE INSTALLED ONLY IN CONCEALED LOCATIONS UNLESS INDICATED OTHERWISE.
- INSTALLING CONTRACTOR TO FIELD VERIFY ALL EXISTING CONDITIONS AND IS RESPONSIBLE FOR PREPARING A DESIGN TO ACCOMMODATE ALL EXISTING CONDITIONS.
- EXPOSED FIRE SPRINKLER SYSTEM PIPING SHALL BE RUN STRAIGHT AND TIGHT TO UNDERSIDE OF STRUCTURAL MEMBERS, AND SHALL NOT OFFSET VERTICALLY TO DROP BELOW BEAMS.

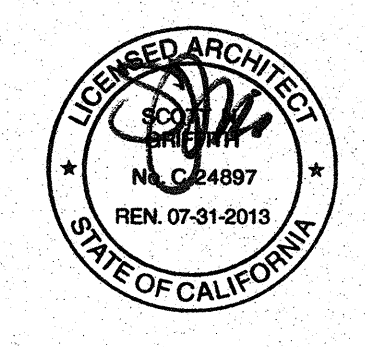
SYMBOLS AND DESCRIPTIONS

SYM	TYPE	FINISH	TEMP	K FACTOR	THRD	SIN *	HFG	MODEL	ESQUICHEON
○	SSU	BRASS	200	5.6	1/2"	VK320	VIKING	MICROFAST	N/A
●	SSP	WHITE	155	5.6	1/2"	VK320	VIKING	MICROFAST	SEM REC
◐	DRY SSP	CHROME	200	5.6	1"	VK16	VIKING	GRDP	2PCE/401
◑	HSU	BRASS	155	5.6	1/2"	VK320	VIKING	MICROFAST	N/A

CONSULTANTS:



LP Consulting Engineers, Inc.
895 W. Ashton Ave., Suite 101 Clovis, CA 93612
p 559-348-2130 • f 559-348-2131
www.lpengineers.com
Job #: 10-1096



ARCHITECT/ENGINEERS:

HMC Architects

1827 E. Fir Avenue, Studio 103 / Fresno, CA 93720
T 559 322 2444 / www.hmcarchitects.com

Drawing Title
THIRD FLOOR FIRE SPRINKLER PIPING PLAN

Approved Project Director

Project Title
**BUILDING 24
SEISMIC CORRECTION
AND ADDITION**

Location
VAMC FRESNO, CA

Date
JANUARY 31, 2012

Checked
SA

Drawn
ES

Project Number
570-215

Building Number
24

Drawing Number
FP103

Dwg. 123 of 180

Office of
Construction
and Facilities
Management

