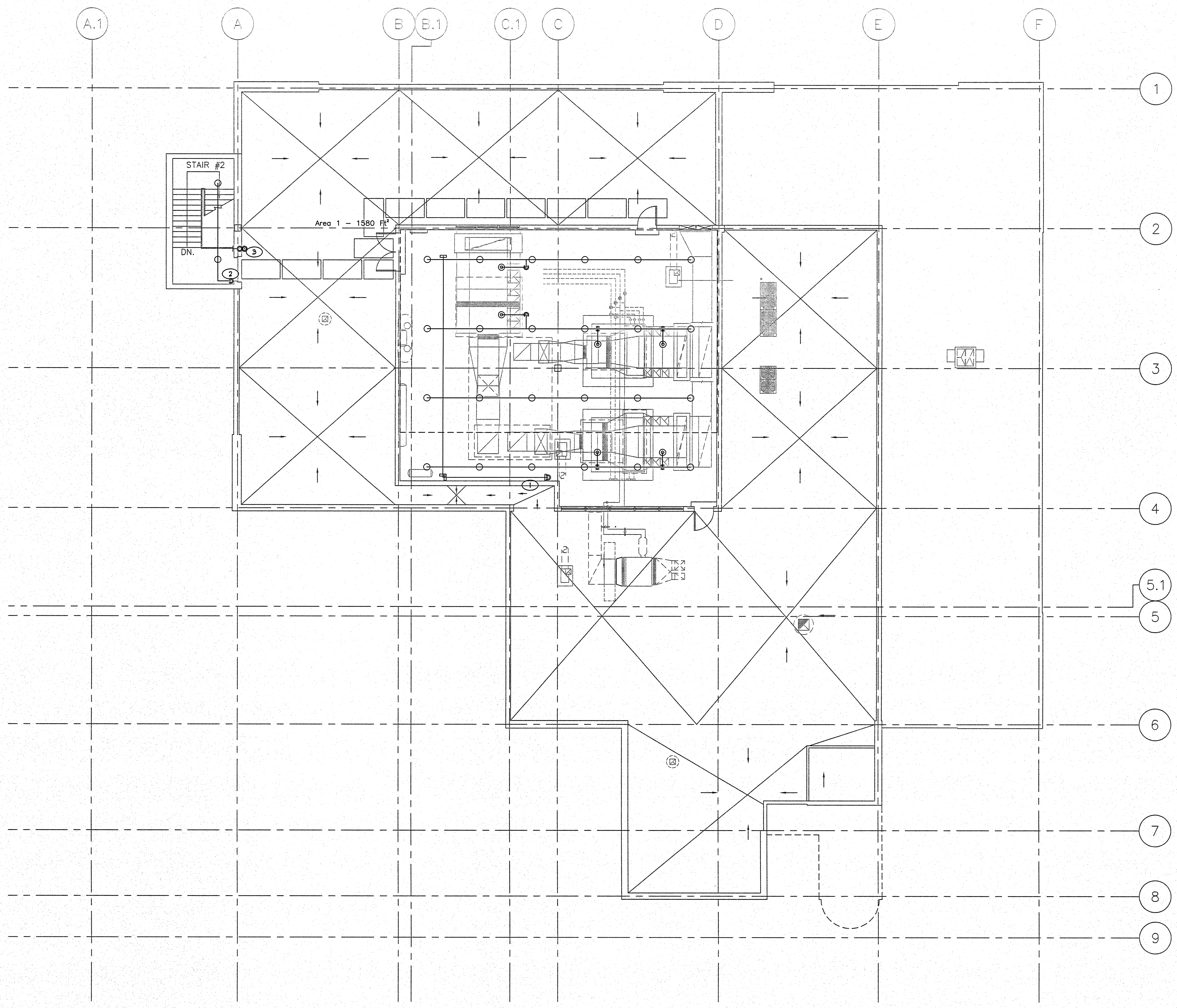


three inches = one foot
one and one half inches = one foot
one inch = one foot
three quarters inch = one foot
one half inch = one foot
three eighths inch = one foot
one quarter inch = one foot
one eighth inch = one foot






- KEY NOTES**
- 1 DROP DOWN TO 3RD FLOOR PIPING
 - 2 DROP DOWN TO 3RD FLOOR PIPING
 - 3 (E) 4" STANDPIPE
 - 4 WORK IN THIS AREA TO BE INCLUDED IN PHASE 1A WORK

- GENERAL NOTES**
- ITEMS SHOWN ON THIS PLAN DESCRIBE GENERAL LAYOUT REQUIREMENTS, AND ARE NOT INTENDED TO SHOW A COMPLETE LAYOUT OF REQUIRED FIRE PROTECTION SYSTEM PIPING AND COMPONENTS. REFER TO ARCHITECTURAL, MECHANICAL AND PLUMBING SHEETS, FIRE PROTECTION SPECIFICATIONS, AS WELL AS OTHER PORTIONS OF THE CONTRACT DOCUMENTS FOR ADDITIONAL COORDINATION REQUIREMENTS.
 - THE LAYOUT REQUIREMENTS DESCRIBED IN THESE PLANS SHALL BE ADHERED TO AS CLOSELY AS POSSIBLE BUT SHALL NOT SUPERSEDE CODE CONSTRAINTS AND/OR REQUIREMENTS OF AUTHORITIES HAVING JURISDICTION (AHS). WHERE CODE OR AHS REQUIREMENTS SUPERSEDE ITEMS SHOWN ON THIS PLAN, CONTRACTOR SHALL INCLUDE ALL ASSOCIATED PROVISIONS IN THE BID, AND SHALL MAKE THEM AT NO ADDITIONAL COST TO OWNER. PROPOSED DEVIATIONS FROM THIS PLAN SHALL BE SUBJECT TO ENGINEER OF RECORD REVIEW AND APPROVAL PRIOR TO IMPLEMENTATION.
 - ALL AREAS OF THE BUILDING NOT COVERED BY NOTES HEREIN SHALL BE FULLY SPRINKLERED IN ACCORDANCE WITH SPECIFICATIONS, NFPA 13, 2010 ED., CITY OF FRESNO FIRE DEPARTMENT REQUIREMENTS, DEPARTMENT OF VETERANS AFFAIRS FIRE PROTECTION DESIGN STANDARDS AND CODE REQUIREMENTS.
 - WHERE PLAN INDICATES EXPOSED FIRE SPRINKLER PIPING DIRECTION OF LAYOUT, ASSOCIATED CONNECTED FIRE SPRINKLER PIPING RUNNING IN PERPENDICULAR DIRECTIONS SHALL BE INSTALLED ONLY IN CONCEALED LOCATIONS UNLESS INDICATED OTHERWISE.
 - INSTALLING CONTRACTOR TO FIELD VERIFY ALL EXISTING CONDITIONS AND IS RESPONSIBLE FOR PREPARING A DESIGN TO ACCOMMODATE ALL EXISTING CONDITIONS.
 - EXPOSED FIRE SPRINKLER SYSTEM PIPING SHALL BE RUN STRAIGHT AND TIGHT TO UNDERSIDE OF STRUCTURAL MEMBERS, AND SHALL NOT OFFSET VERTICALLY TO DROP BELOW BEAMS.

SYMBOLS AND DESCRIPTIONS										
SYM	TYPE	FINISH	TEMP	K FACTOR	THRD	SN *	MFG	MODEL	EQUTCHEN	
○	SSU	BRASS	200	5.6	1/2"	VK300	VIKING	MICROFAST	N/A	

1 PENTHOUSE FIRE SPRINKLER PIPING PLAN
1/8"=1'-0"

<p>CONSULTANTS:</p> <p> LP Consulting Engineers, Inc. 895 W. Ashlan Ave, Suite 101 Clovis, CA 93612 p 559-348-2130 • f 559-348-2131 www.lpeengineers.com Job #: 10-1096</p>	<p>ARCHITECT/ENGINEERS:</p> <p> HMC Architects 1827 E. Fir Avenue, Studio 103 / Fresno, CA 93720 T 559 322 2444 / www.hmcarchitects.com</p>	<p>Drawing Title</p> <p>PENTHOUSE FIRE SPRINKLER PIPING PLAN</p> <p>Approved Project Director</p>	<p>Project Title</p> <p>BUILDING 24 SEISMIC CORRECTION AND ADDITION</p> <p>Location</p> <p>VAMC FRESNO, CA</p> <p>Date</p> <p>JANUARY 31, 2012</p>	<p>Project Number</p> <p>570-215</p> <p>Building Number</p> <p>24</p> <p>Drawing Number</p> <p>FP104 Dwg 124 of 180</p>	<p>Office of Construction and Facilities Management</p> <p> Department of Veterans Affairs</p>
---	---	--	---	--	---