

one eighth inch = one foot
one quarter inch = one foot
three eighths inch = one foot
one half inch = one foot
one inch = one foot
three quarters inch = one foot
one and one half inches = one foot
two inches = one foot
three inches = one foot

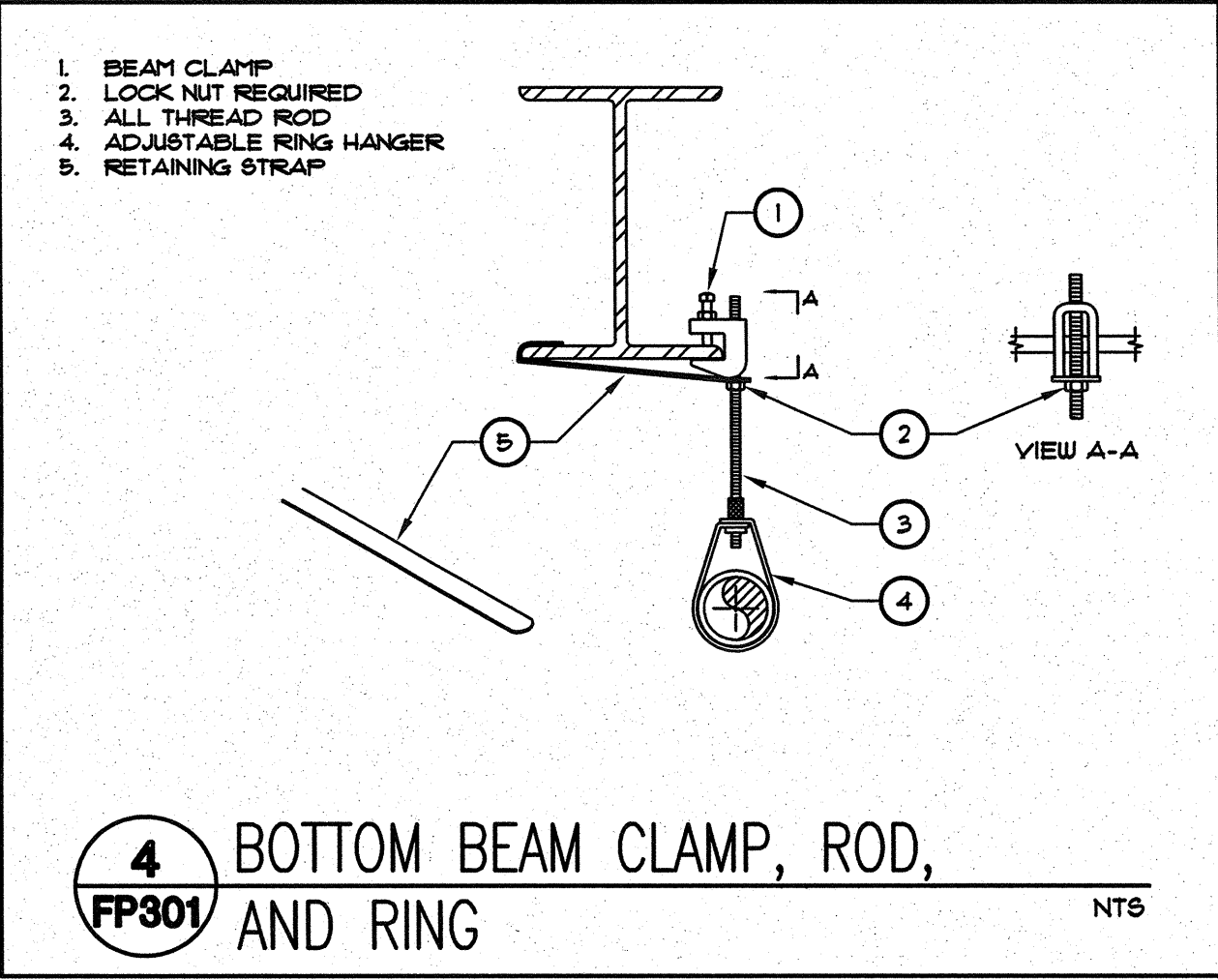
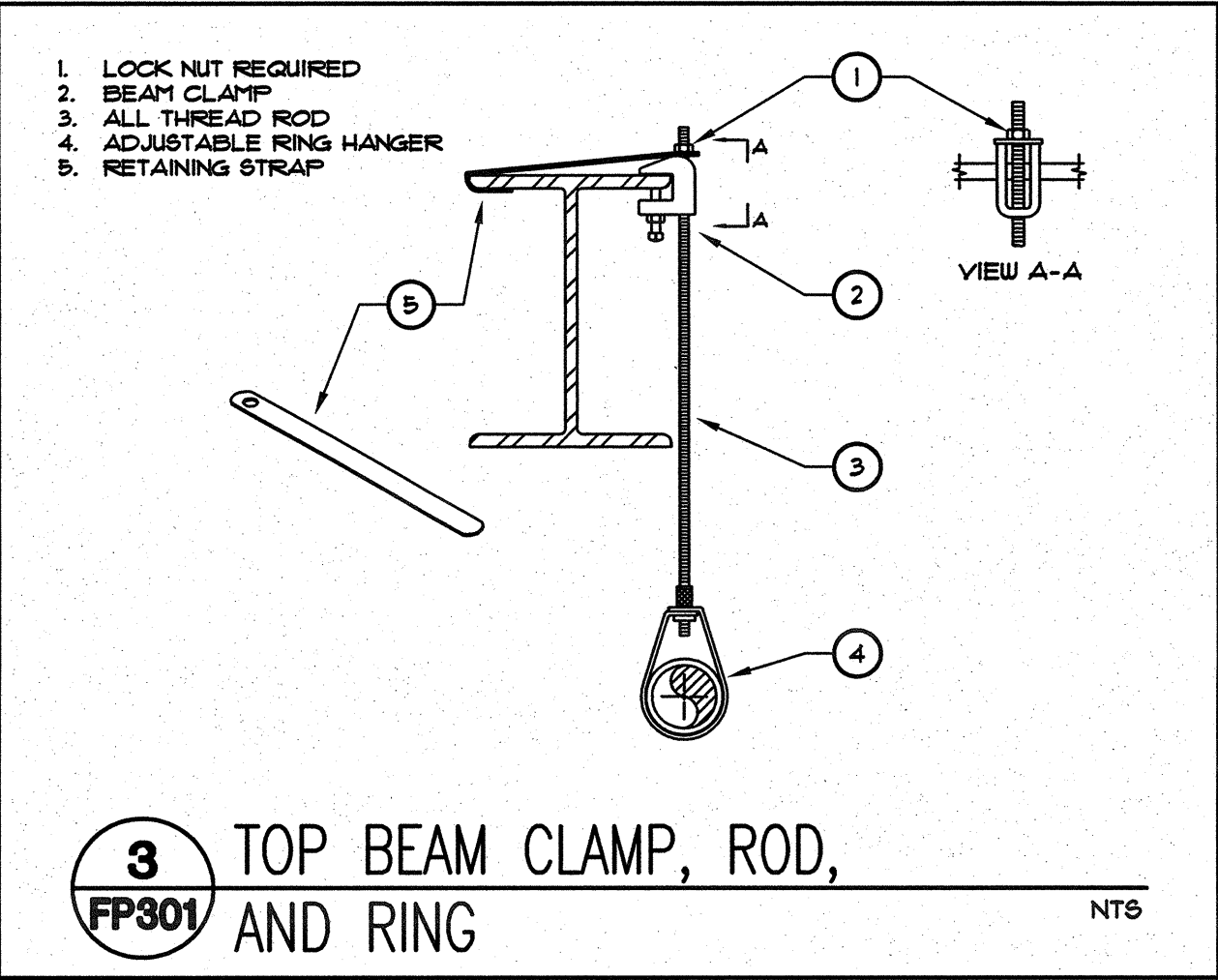
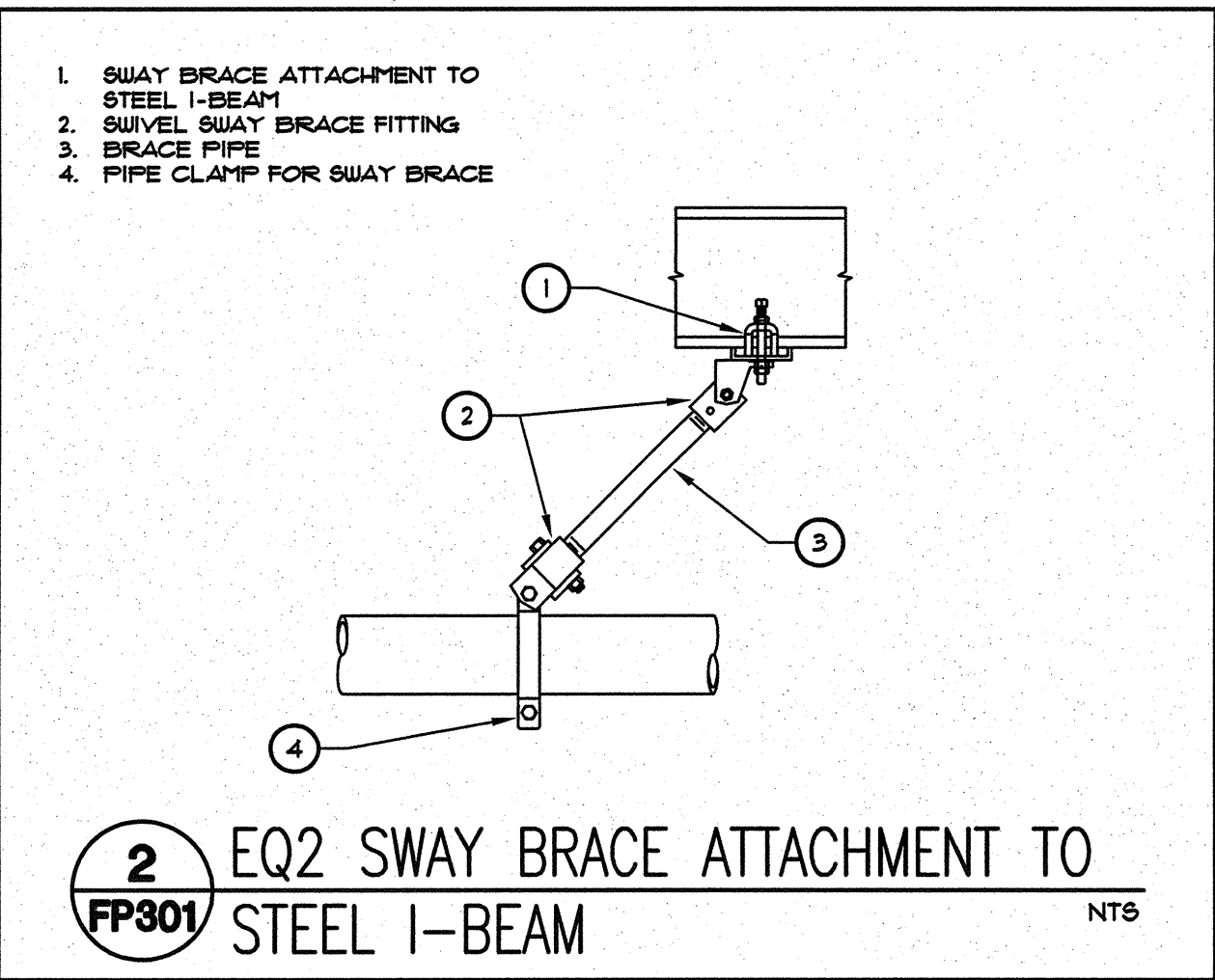
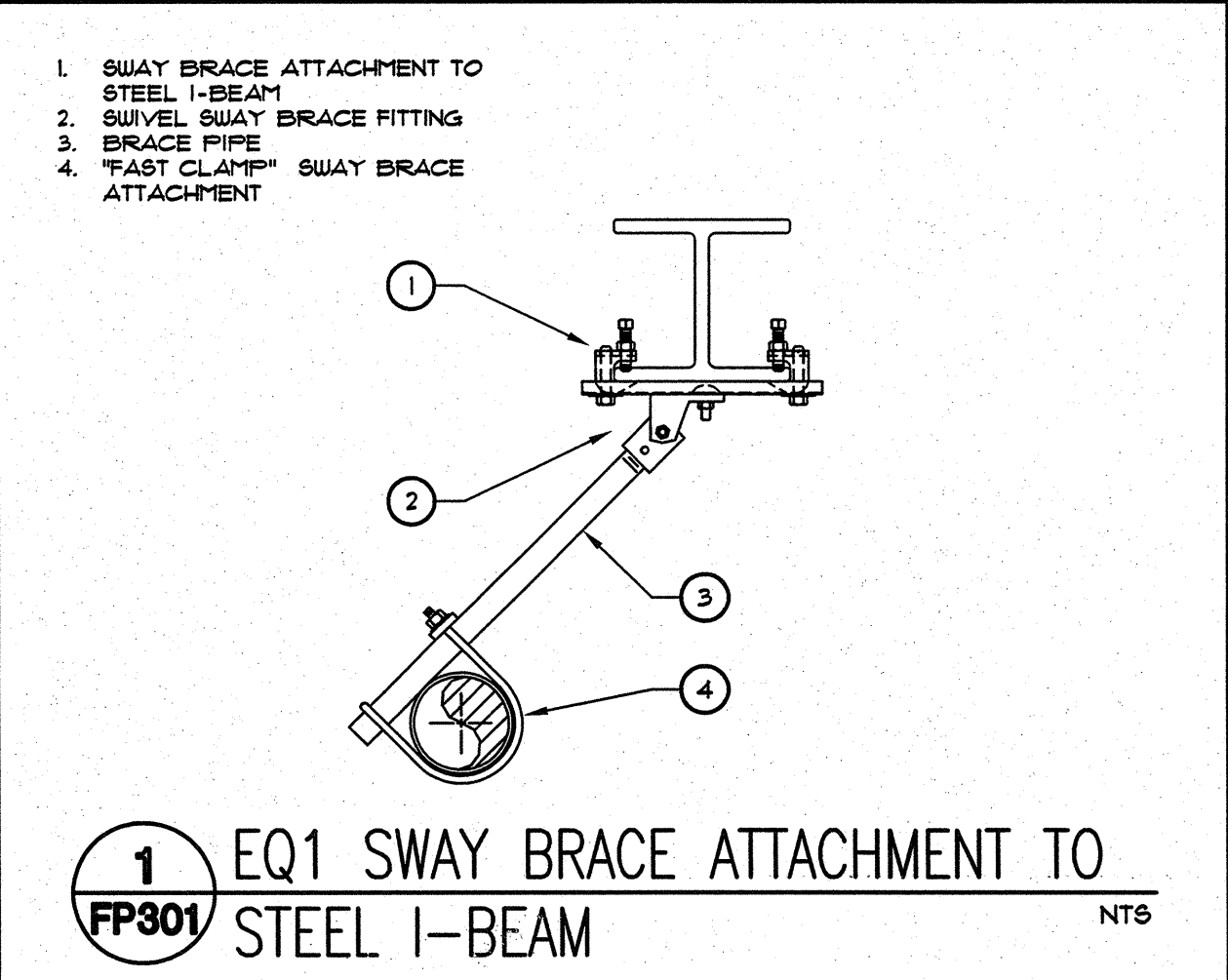
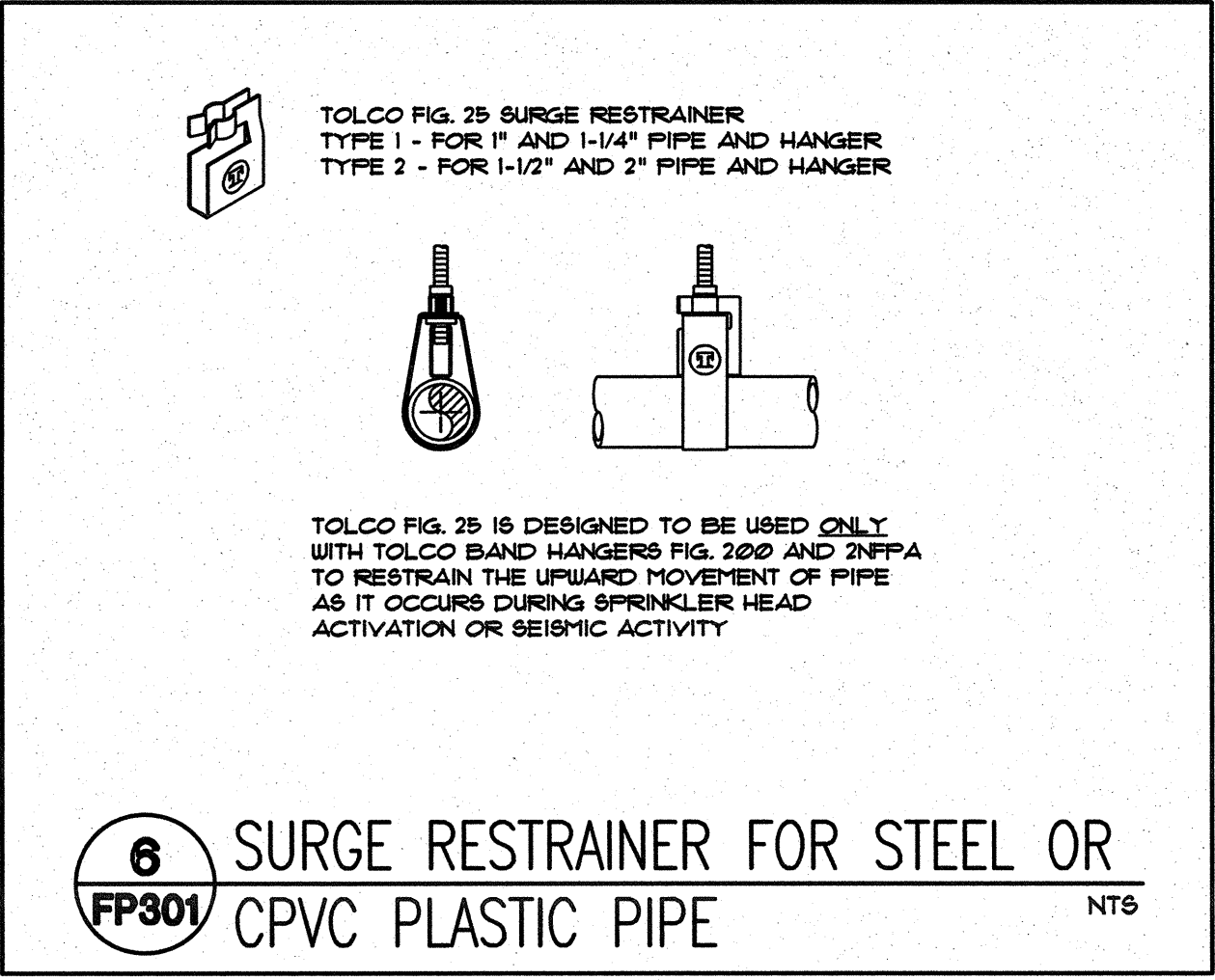
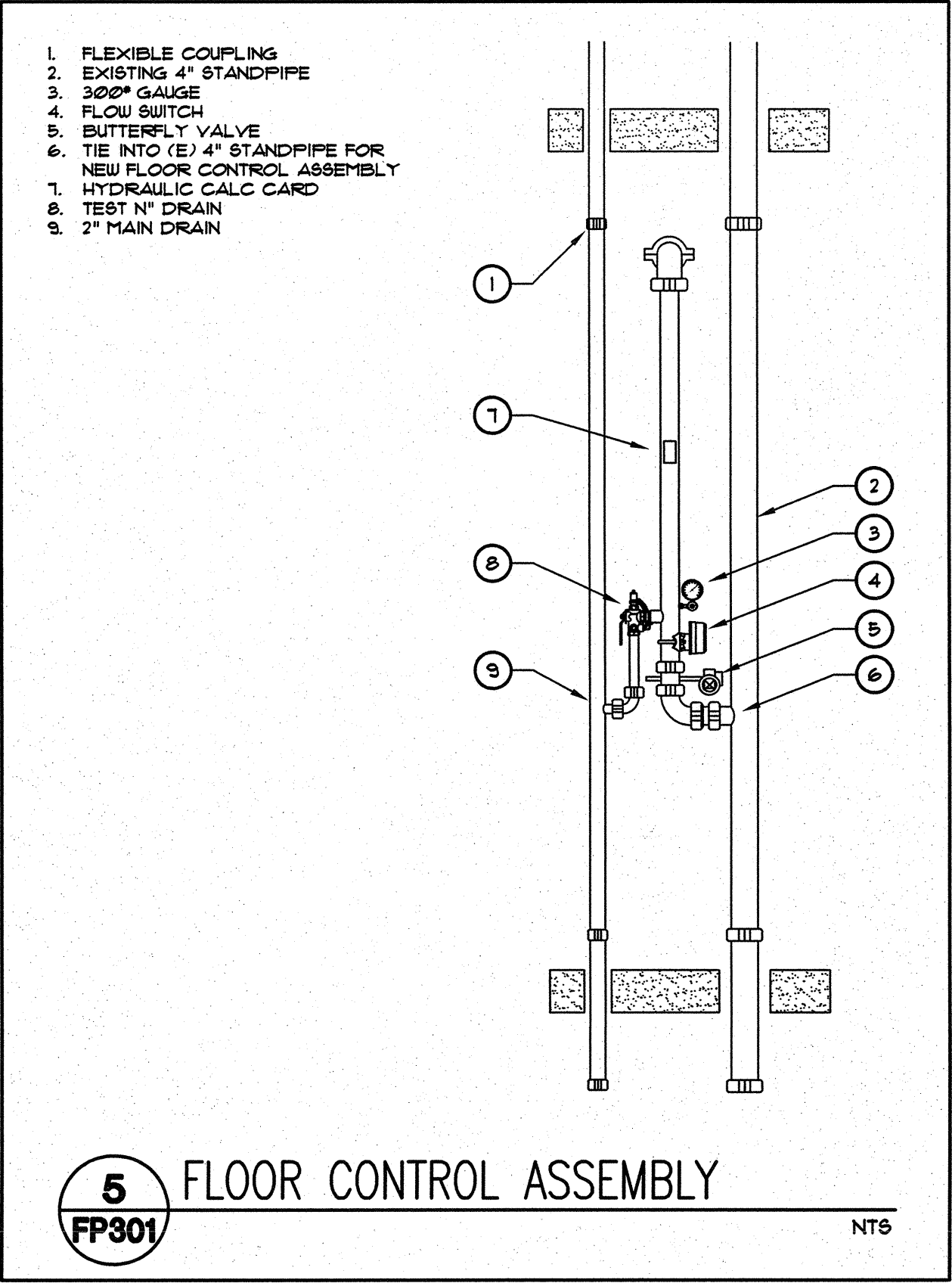
HANGER RODS TO BE INSTALLED TIGHT TO PIPE TO PREVENT UPWARD MOVEMENT*											
MAXIMUM DISTANCE BETWEEN HANGERS											
NOMINAL PIPE SIZE (in.)	3/4"	1"	1-1/4"	1-1/2"	2"	2-1/2"	3"	3-1/2"	4"	5"	6"
STEEL PIPE EXCEPT THREADED LIGHTWALL	N/A	12'-0"	12'-0"	15'-0"	15'-0"	15'-0"	15'-0"	15'-0"	15'-0"	15'-0"	15'-0"
THREADED LIGHTWALL STEEL PIPE	N/A	12'-0"	12'-0"	12'-0"	12'-0"	12'-0"	N/A	N/A	N/A	N/A	N/A

HANGER ROD SIZES											
NOMINAL PIPE SIZE (in.)	3/4"	1"	1-1/4"	1-1/2"	2"	2-1/2"	3"	3-1/2"	4"	5"	6"
STEEL PIPE EXCEPT THREADED LIGHTWALL	N/A	3/8"	3/8"	3/8"	3/8"	3/8"	3/8"	3/8"	3/8"	1/2"	1/2"
THREADED LIGHTWALL STEEL PIPE	N/A	3/8"	3/8"	3/8"	3/8"	3/8"	3/8"	3/8"	N/A	N/A	N/A

7
FP301

HANGER CHART

NTS



Revisions	Date	CONSULTANTS:	ARCHITECT/ENGINEERS:	Drawing Title	Project Title	Project Number	Building Number	Drawing Number	Office of Construction and Facilities Management
		LP Consulting Engineers, Inc.	HMC Architects	FIRE SPRINKLER DETAILS	BUILDING 24 SEISMIC CORRECTION AND ADDITION	570-215	24	FP301	Department of Veterans Affairs
				Approved Project Director	Location			Dwg. 128 of 180	
					VAMC FRESNO, CA				
					Date	Checked	Drawn		
					JANUARY 31, 2012	SA	ES		