

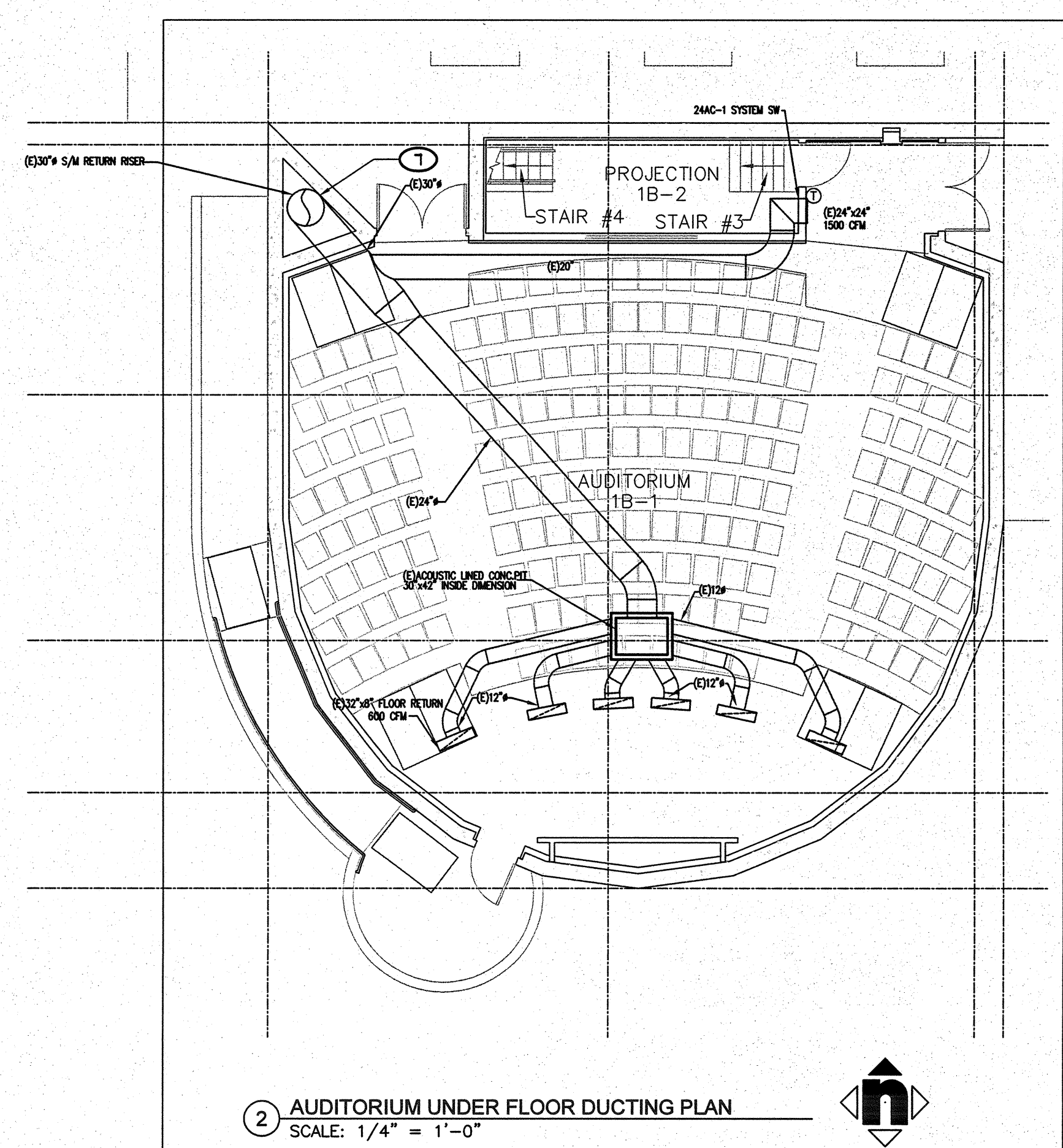
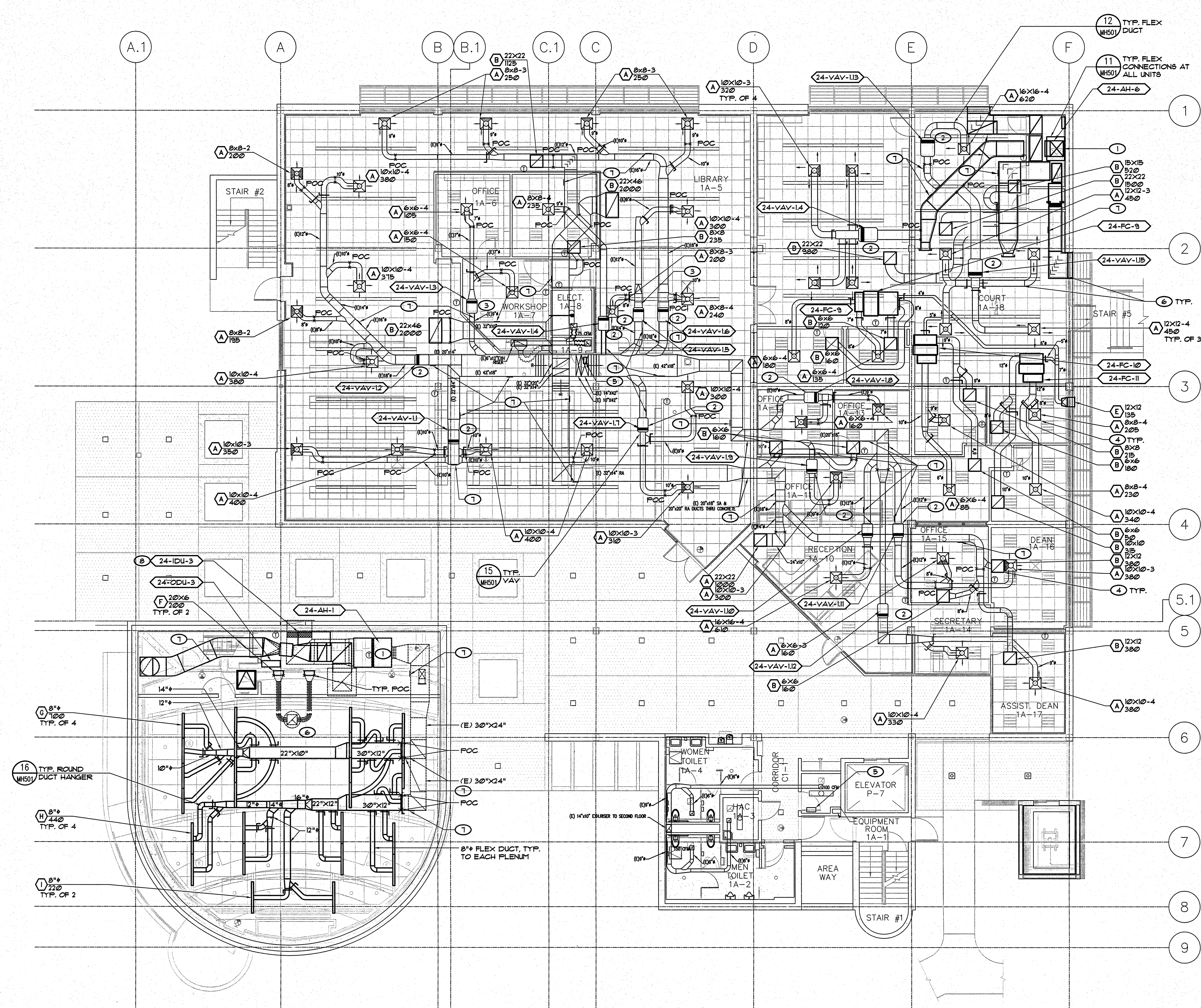
three inches = one foot  
one and one half inches = one foot  
one inch = one foot  
three quarters inch = one foot  
one half inch = one foot  
three eighths inch = one foot  
one quarter inch = one foot  
one eighth inch = one foot

**KEY NOTES**

- (E) AH-6 TO BE REPLACED, REPLACE INDIVIDUAL SUPPLY FAN, RETURN FAN AND COIL SECTIONS ALONG WITH ALL ASSOCIATED FLEX CONNECTIONS AND CONTROLS. ADD SEISMIC BRACING TO MAIN DUCTWORK.
- VAV BOX WITH REHEAT COIL, CONNECT TO (E) DUCTWORK.
- VAV BOX, CONNECT TO (E) DUCTWORK.
- ATTACH CEILING GRILLE TO T-BAR CEILING GRID WITH (1) #10 SH. SCREW ON EACH SIDE.
- ADD 12"x12" DOOR LOUVER AT 12" FROM BOTTOM OF DOOR. IF FIRE SPRINKLERS ARE NOT ADDED TO BUILDING THEN 6"x6" CEILING TRANSFER AIR GRILLES WITH 6" DUCT BETWEEN WILL NEED TO BE ADDED INSTEAD OF DOOR LOUVER. THERE WILL ALSO NEED TO BE FIRE/ SMOKE DAMPER ADDED AT WALL TO ROOM ABOVE CEILING.
- SEE DETAILS 1 THRU 10 SHEET MH-01 FOR TYP. DUCT DETAILS.
- PROVIDE GASKETED REMOVABLE ACCESS PANEL ON SIDE OF (E) DUCT TO REMAIN AND CLEAN DUCT PER SPEC. SECT. 23 31 00, PARAGRAPH 3.6.
- REFRIGERANT PIPES ROUTE UP THRU CEILING, THRU MECH. ROOM ABOVE, THRU ROOF AND CONNECT TO ODU ON ROOF.

**EQUIPMENT NOTE**

REFER TO SHEETS MH-00 AND MH-01 FOR EQUIPMENT SCHEDULES.



1 FIRST FLOOR MECHANICAL REMODEL PLAN  
SCALE: 1/8" = 1'-0"

<b>CONSULTANTS:</b>  895 W. Ashlan Ave, Suite 101, Clovis, CA 93212 p 559-348-2130 - f 559-348-2131 www.lpeengineers.com Job #: 10-1086		<b>ARCHITECT/ENGINEERS:</b>  1827 E. Fir Avenue, Studio 103 / Fresno, CA 93720 T 559 322 2444 / www.hmcarchitects.com		<b>Drawing Title</b> FIRST FLOOR MECHANICAL REMODEL PLAN  <b>Approved Project Director</b>		<b>Project Title</b> BUILDING 24 SEISMIC CORRECTION AND ADDITION  <b>Location</b> VAMC FRESNO, CA  <b>Date</b> January 31, 2012 <b>Checked</b> K.K. <b>Drawn</b> D.N.		<b>Project Number</b> 570-215 <b>Building Number</b> 24 <b>Drawing Number</b> MH-101 Dwg. 137 of 180		<b>Office of Construction and Facilities Management</b> 	
--	--	--	--	---	--	--	--	--	--	---	--