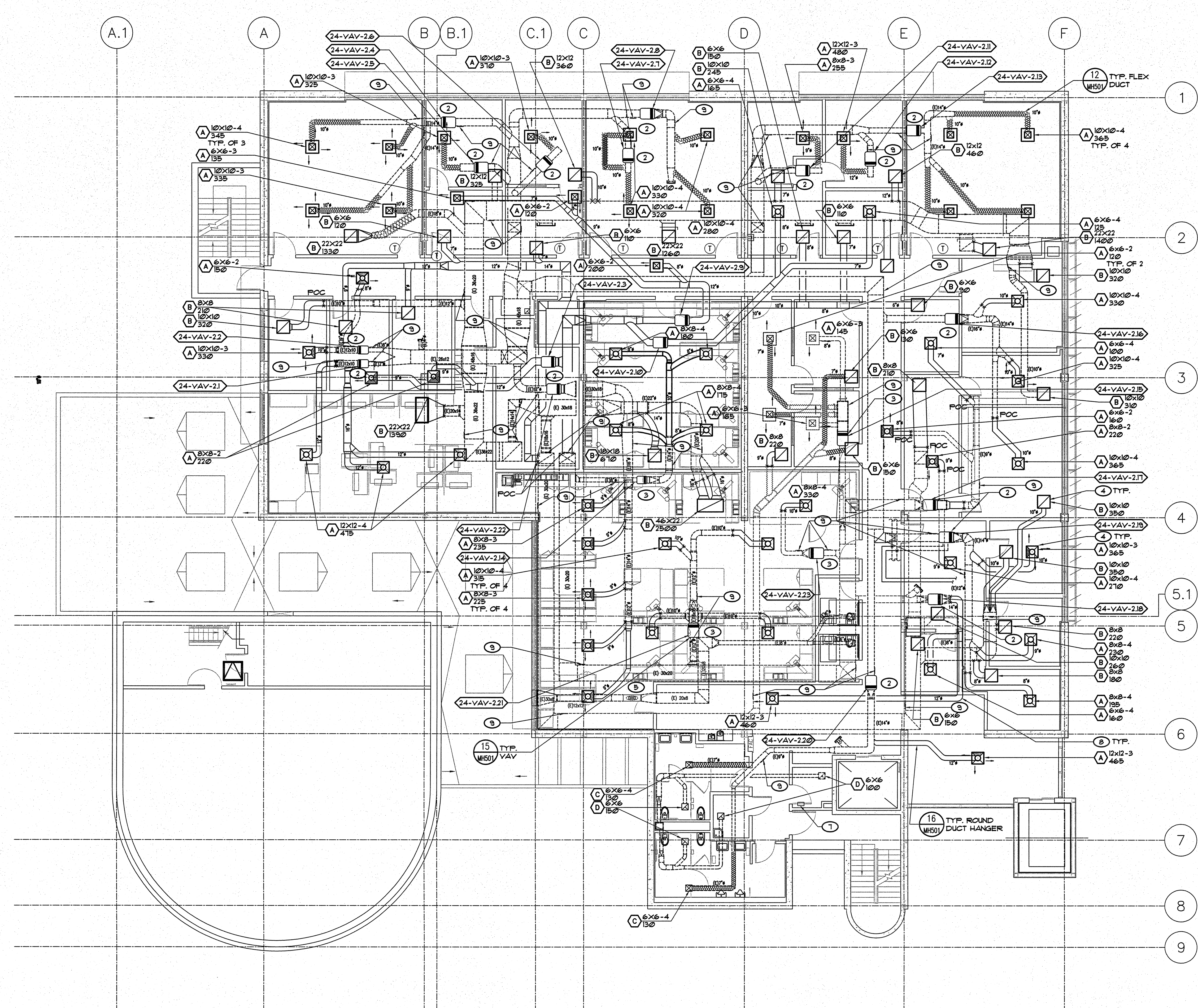


three inches = one foot
one and one half inches = one foot
one inch = one foot
three quarters inch = one foot
one half inch = one foot
three eighths inch = one foot
one quarter inch = one foot
one eighth inch = one foot

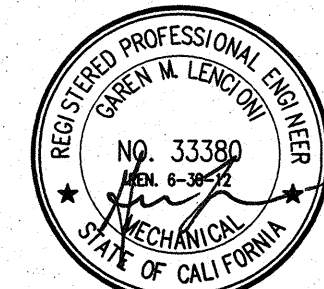




- KEY NOTES**

 - 1 (E) AH-1 TO BE REPLACED. REPLACE INDIVIDUAL SUPPLY FAN, RETURN FAN AND COIL SECTIONS ALONG WITH ALL ASSOCIATED FLEX CONNECTIONS AND CONTROLS. ADD SEISMIC BRACING TO MAIN DUCTWORK.
 - 2 VAV BOX WITH REHEAT COIL, CONNECT TO (E) DUCTWORK.
 - 3 VAV BOX, CONNECT TO (E) DUCTWORK.
 - 4 ATTACH CEILING GRILLE TO T-BAR CEILING GRID WITH (1) #10 SH. SCREW ON EACH SIDE.
 - 5 (E) ATTIC MOUNT IN-LINE EXHAUST FAN TO REMAIN.
 - 6 (E) ROOFTOP EXHAUST FAN TO REMAIN.
 - 7 ADD 12"x12" DOOR LOUVER AT 12" FROM BOTTOM OF DOOR. IF FIRE SPRINKLERS ARE NOT ADDED TO BUILDING THEN 6"x6" CEILING TRANSFER AIR GRILLES WITH 6" DUCT BETWEEN WILL NEED TO BE ADDED INSTEAD OF DOOR LOUVER. THERE WILL ALSO NEED TO BE FIRE/ SMOKE DAMPER ADDED AT WALL TO ROOM ABOVE CEILING.
 - 8 SEE DETAILS 1 THRU 10 SHEET MH-501 FOR TYP. DUCT DETAILS.
 - 9 PROVIDE GASKETED REMOVABLE ACCESS PANEL ON SIDE OF (E) DUCT TO REMAIN AND CLEAN DUCT PER SPEC. SECT. 23 31 00, PARAGRAPH 3.6.
- EQUIPMENT NOTE**

REFER TO SHEETS MH-600 AND MH-601 FOR EQUIPMENT SCHEDULES.

1 SECOND FLOOR MECHANICAL REMODEL PLAN
SCALE: 1/8" = 1'-0"

<p>CONSULTANTS:</p> <p> LP Consulting Engineers, Inc. 895 W. Ashland Ave., Suite 101 Clovis, CA 93612 p 559-348-2130 f 559-348-2131 www.lpeengineering.com Job #: 10-1096</p>		<p>ARCHITECT/ENGINEERS:</p> <p> HMC Architects 1827 E. Fir Avenue, Studio 103 / Fresno, CA 93720 T 559 322 2444 / www.hmcarchitects.com</p>		<p>Drawing Title SECOND FLOOR MECHANICAL REMODEL PLAN</p> <p>Approved: Project Director</p>		<p>Project Title BUILDING 24 SEISMIC CORRECTION AND ADDITION</p> <p>Location VAMC FRESNO, CA</p> <p>Date January 31, 2012</p> <p>Checked KK</p> <p>Drawn DN</p>		<p>Project Number 570-215</p> <p>Building Number 24</p> <p>Drawing Number MH-102 Dwg. 138 of 180</p>		<p>Office of Construction and Facilities Management</p> <p> Department of Veterans Affairs</p>	
---	--	---	--	--	--	--	--	---	--	---	--