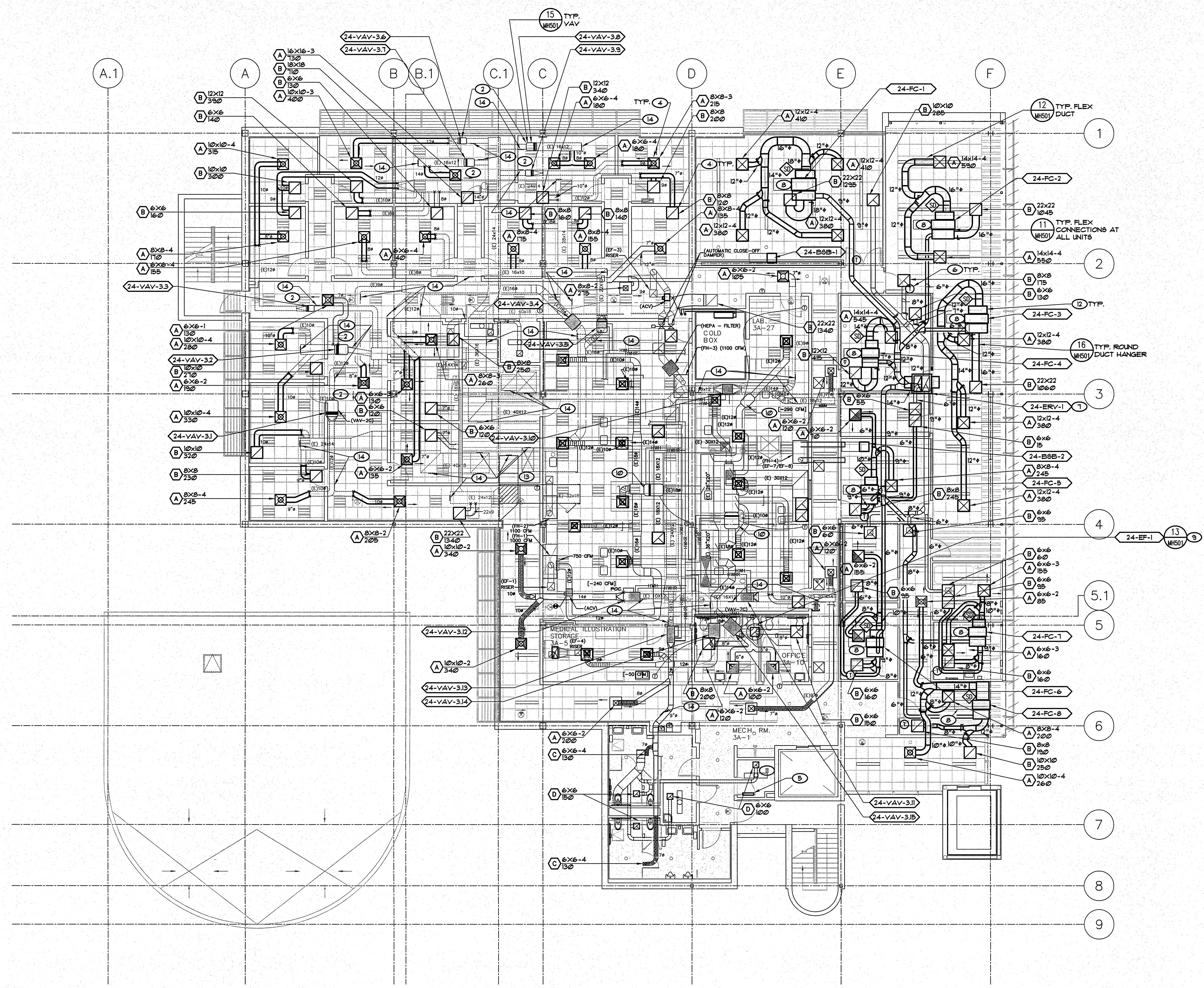


three inches = one foot
one and one half inches = one foot
one inch = one foot
three quarters inch = one foot
one half inch = one foot
three eighths inch = one foot
one quarter inch = one foot
one eighth inch = one foot



- KEY NOTES**
 - (E) FUME HOOD TO REMAIN.
 - VAV BOX WITH REHEAT COIL, CONNECT TO (E) DUCTWORK.
 - VAV BOX, CONNECT TO (E) DUCTWORK.
 - ATTACH CEILING GRILLE TO T-BAR CEILING GRID WITH (1) #10 SH. SCREW ON EACH SIDE.
 - ADD 12"x12" DOOR LOUVER AT 42" FROM BOTTOM OF DOOR. IF FIRE SPRINKLERS ARE NOT ADDED TO BUILDING THEN 6"x6" CEILING TRANSFER AIR GRILLES WITH 6" DUCT BETWEEN WILL NEED TO BE ADDED INSTEAD OF DOOR LOUVER. THERE WILL ALSO NEED TO BE FIRE/SHOKE DAMPER ADDED AT WALL TO ROOM ABOVE CEILING.
 - THERMOSTAT MOUNTED AT 48" AFF.
 - ENERGY RECOVERY VENTILATOR ON ROOF.
 - FAN COIL MOUNTED IN ATTIC.
 - EXHAUST FAN ON ROOF. 10"x10" DUCT DROP THRU ROOF.
 - (E) VAV BOX TO REMAIN.
 - PROVIDE 1-TON DUCTLESS SPLIT SYSTEM COOLING ONLY UNIT ABOVE DOOR FOR ELEVATOR EQUIPMENT ROOM. OUTDOOR UNIT SHALL BE MOUNTED ON ROOF ABOVE THIS ROOM. SEE ELECTRICAL DRAWINGS FOR ALL POWER REQUIREMENTS.
 - SEE DETAILS 1 THRU 10 SHEET MH601 FOR TYP. DUCT DETAILS.
 - BLANK-OFF MAIN DUCTS IN THIS ROOM SERVING THIRD FLOOR FOR PHASE 1 WORK. REMOVE BLANK-OFFS WHEN PHASE 1 IS COMPLETE AND PROVIDE BLANK-OFFS FOR DUCTS IN THIS ROOM SERVING SECOND FLOOR FOR PHASE 2 WORK. REMOVE BLANK-OFFS WHEN PHASE 2 IS COMPLETE. THIRD FLOOR DUCT OUTSIDE DIMENSIONS ARE: 35"x18", 49"x21", 43"x18", 39"x16", 41"x16". DUCT DROPS TO SECOND FLOOR OUTSIDE DIMENSIONS ARE: 35"x26", 36"x36", 39"x32", 46"x30". THE 32"x32" & 23"x42" DROPS IN NORTHEAST CORNER ARE FOR FIRST FLOOR.
 - PROVIDE GASKETED REMOVABLE ACCESS PANEL ON SIDE OF (E) DUCT TO REMAIN AND CLEAN DUCT PER SPEC. SECT. 23.31.02, PARAGRAPH 3.6.
- EQUIPMENT NOTE**

REFER TO SHEETS MH600 AND MH601 FOR EQUIPMENT SCHEDULES.

1 THIRD FLOOR MECHANICAL REMODEL PLAN
SCALE: 1/8" = 1'-0"

CONSULTANTS: LP Consulting Engineers, Inc. 885 W. Ashlan Ave., Suite 101 Clovis, CA 93612 P 559-348-2130 F 559-348-2131 www.lpengineers.com Job #: 10-1096		ARCHITECT/ENGINEERS: HMC Architects 1827 E. Fir Avenue, Studio 103 / Fresno, CA 93720 T 559 322 2444 / www.hmcarchitects.com		Drawing Title THIRD FLOOR MECHANICAL REMODEL PLAN Approved Project Director		Project Title BUILDING 24 SEISMIC CORRECTION AND ADDITION Location VAMC FRESNO, CA Date January 31, 2012		Project Number 570-215 Building Number 24 Drawing Number MH103 Dwg. 139 of 180		Office of Construction and Facilities Management Department of Veterans Affairs	
Revisions						Checked K.K.		Drawn D.N.			