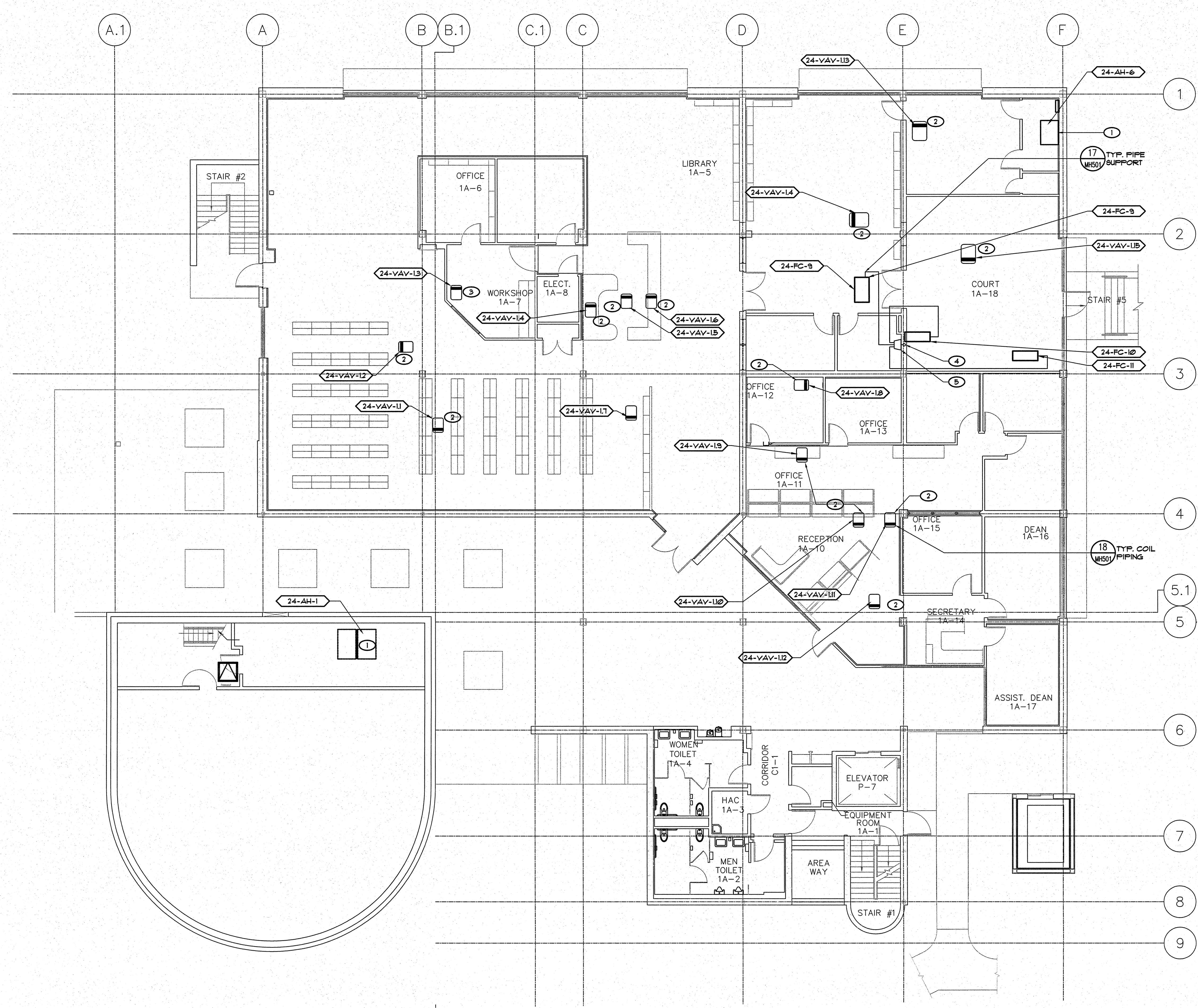


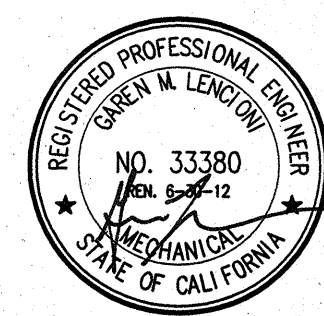


one eighth inch = one foot  
one quarter inch = one foot  
three eighths inch = one foot  
one half inch = one foot  
three quarters inch = one foot  
one inch = one foot  
one and one half inches = one foot  
two inches = one foot  
three inches = one foot  
four inches = one foot  
five inches = one foot  
six inches = one foot  
seven inches = one foot  
eight inches = one foot  
nine inches = one foot  
ten inches = one foot  
eleven inches = one foot  
twelve inches = one foot  
thirteen inches = one foot  
fourteen inches = one foot  
fifteen inches = one foot  
sixteen inches = one foot  
seventeen inches = one foot  
eighteen inches = one foot  
nineteen inches = one foot  
twenty inches = one foot  
twenty one inches = one foot  
twenty two inches = one foot  
twenty three inches = one foot  
twenty four inches = one foot  
twenty five inches = one foot  
twenty six inches = one foot  
twenty seven inches = one foot  
twenty eight inches = one foot  
twenty nine inches = one foot  
thirty inches = one foot  
thirty one inches = one foot  
thirty two inches = one foot  
thirty three inches = one foot  
thirty four inches = one foot  
thirty five inches = one foot  
thirty six inches = one foot  
thirty seven inches = one foot  
thirty eight inches = one foot  
thirty nine inches = one foot  
forty inches = one foot  
forty one inches = one foot  
forty two inches = one foot  
forty three inches = one foot  
forty four inches = one foot  
forty five inches = one foot  
forty six inches = one foot  
forty seven inches = one foot  
forty eight inches = one foot  
forty nine inches = one foot  
fifty inches = one foot  
fifty one inches = one foot  
fifty two inches = one foot  
fifty three inches = one foot  
fifty four inches = one foot  
fifty five inches = one foot  
fifty six inches = one foot  
fifty seven inches = one foot  
fifty eight inches = one foot  
fifty nine inches = one foot  
sixty inches = one foot  
sixty one inches = one foot  
sixty two inches = one foot  
sixty three inches = one foot  
sixty four inches = one foot  
sixty five inches = one foot  
sixty six inches = one foot  
sixty seven inches = one foot  
sixty eight inches = one foot  
sixty nine inches = one foot  
seventy inches = one foot  
seventy one inches = one foot  
seventy two inches = one foot  
seventy three inches = one foot  
seventy four inches = one foot  
seventy five inches = one foot  
seventy six inches = one foot  
seventy seven inches = one foot  
seventy eight inches = one foot  
seventy nine inches = one foot  
eighty inches = one foot  
eighty one inches = one foot  
eighty two inches = one foot  
eighty three inches = one foot  
eighty four inches = one foot  
eighty five inches = one foot  
eighty six inches = one foot  
eighty seven inches = one foot  
eighty eight inches = one foot  
eighty nine inches = one foot  
ninety inches = one foot  
ninety one inches = one foot  
ninety two inches = one foot  
ninety three inches = one foot  
ninety four inches = one foot  
ninety five inches = one foot  
ninety six inches = one foot  
ninety seven inches = one foot  
ninety eight inches = one foot  
ninety nine inches = one foot  
one hundred inches = one foot



- KEY NOTES**
  - 1 (E) AH TO BE REPLACED, REPLACE ALL COIL PIPING VALVES ALONG WITH ALL ASSOCIATED CONTROLS.
  - 2 VAV BOX WITH REHEAT COIL, REPLACE ALL COIL PIPING VALVES ALONG WITH ALL ASSOCIATED CONTROLS.
  - 3 VAV BOX, WITH NO HOT WATER COIL.
  - 4 REFRIGERANT PIPING DROPS FROM SECOND FLOOR, SEE SHEET M14602 FOR CONTINUATION. EXTEND REFRIGERANT LINES IN ATTIC TO REINET BRANCH AND FC'S AS SHOWN, SEE SHEET M14602 FOR PIPE SIZES ON SCHEMATICS.
  - 5 REFRIGERANT Y-BRANCH FITTINGS IN ATTIC, SEE PIPING SCHEMATIC SHEET M14602 FOR MODEL.
- EQUIPMENT NOTE**

REFER TO SHEETS M14600 AND M14601 FOR EQUIPMENT SCHEDULES.

1 FIRST FLOOR MECHANICAL REMODEL PLAN  
SCALE: 1/8" = 1'-0"

<b>CONSULTANTS:</b>  <b>LP Consulting Engineers, Inc.</b> 695 W. Ashlan Ave. Suite 101 Clovis, CA 93612 p 559-348-2130 - f 559-348-2131 www.lpeengineers.com Job #: 10-1098		<b>ARCHITECT/ENGINEERS:</b>  <b>HMC Architects</b> 1827 E. Fir Avenue, Studio 103 / Fresno, CA 93720 T 559 322 2444 / www.hmcarchitects.com		<b>Drawing Title</b> FIRST FLOOR MECHANICAL REMODEL PIPING PLAN  <b>Approved: Project Director</b>		<b>Project Title</b> BUILDING 24 SEISMIC CORRECTION AND ADDITION  <b>Location</b> VAMC FRESNO, CA <b>Date</b> January 31, 2012 <b>Checked</b> K.K. <b>Drawn</b> D.N.		<b>Project Number</b> 570-215 <b>Building Number</b> 24 <b>Drawing Number</b> MP101 Dwg. 147 of 180		<b>Office of Construction and Facilities Management</b>  <b>Department of Veterans Affairs</b>	
--	--	--	--	---	--	--	--	---	--	--	--