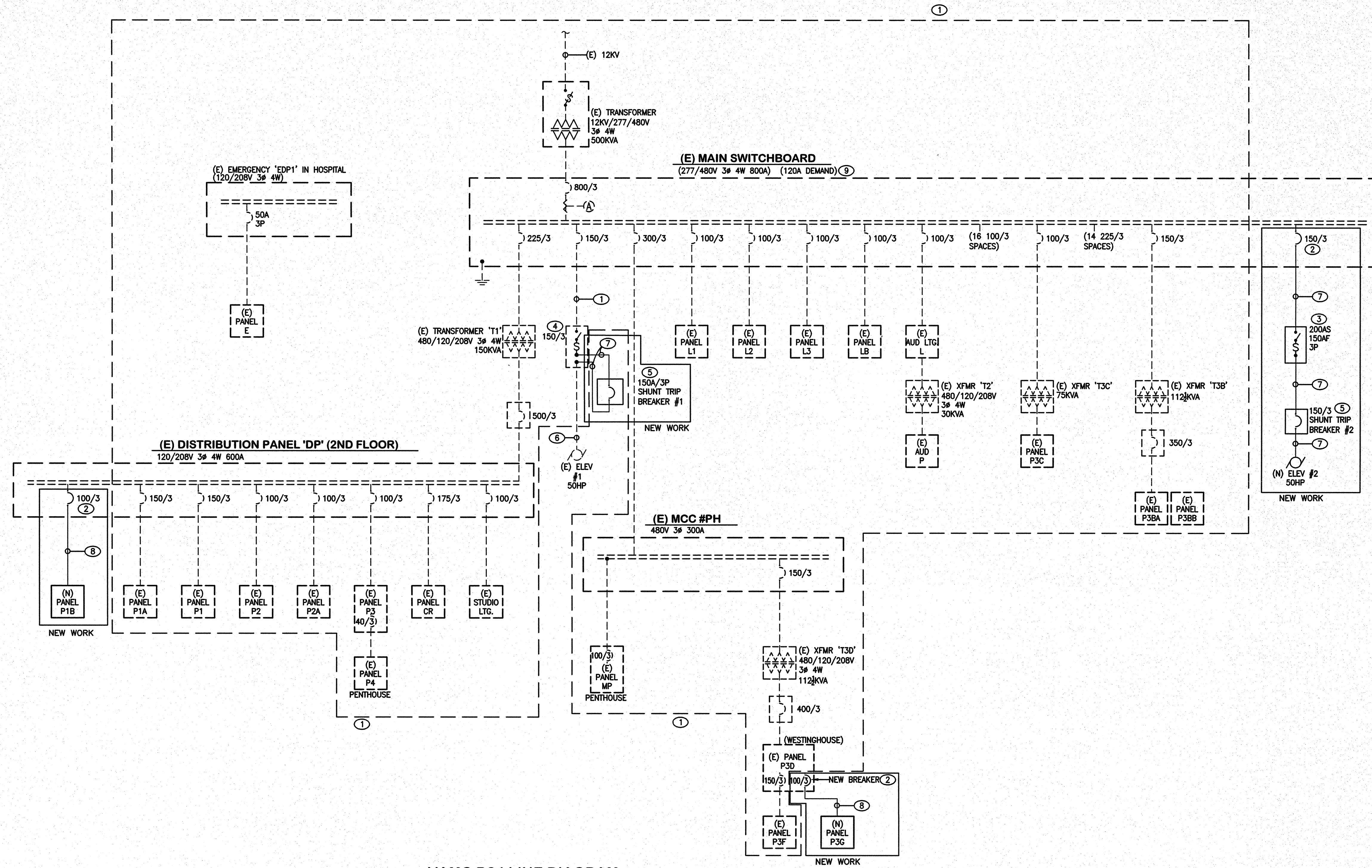


A  
three inches = one foot  
B  
one and one half inches = one foot  
C  
one inch = one foot  
D  
three quarters inch = one foot  
E  
one half inch = one foot  
F  
three eighths inch = one foot  
G  
one quarter inch = one foot  
H  
one eighth inch = one foot  
I  
one sixteenth inch = one foot



VAMC B24 LINE DIAGRAM  
NTS

- LINE DIAGRAM NOTES:
- ① TYPICAL UNLESS OTHERWISE NOTED, EXISTING ELECTRICAL TO REMAIN. SHOWN FOR REFERENCE ONLY.
  - ② PROVIDE NEW BREAKER IN EXISTING SPACE. MATCH EXISTING BREAKERS' AIC RATING. PROVIDE IDENTIFICATION NAMEPLATE FOR NEW BREAKER.
  - ③ PROVIDE FUSED DISCONNECT WITH AUX CONTACTS PER ELEVATOR SUPPLIER'S REQUIREMENT.
  - ④ EXISTING FUSED DISCONNECT SWITCH TO REMAIN. PROVIDE NEW WORK AS REQUIRED TO CONNECT NEW SHUNT TRIP BREAKER.
  - ⑤ PROVIDE NEW 150A/3P BREAKER IN NEMA 1 ENCLOSURE WITH 120V SHUNT TRIP COIL AND AUX CONTACTS PER ELEVATOR SUPPLIER'S REQUIREMENT.
  - ⑥ EXISTING 2-1/2" WITH 3#3/0 + 1#6 GROUND, TO REMAIN.
  - ⑦ NEW 2-1/2" WITH 3#3/0 + 1#6 GROUND. PROVIDE NEW CONNECTION TO EXISTING FUSED DISCONNECT AND BRANCH CIRCUIT WIRING AS INDICATED.
  - ⑧ 2" - 4#1 + 1#6 GROUND.
  - ⑨ 120A MAX AT PHASE C WAS RECORDED DURING SITE VISIT ON NOVEMBER 17, 2010. FOR REFERENCE ONLY.

<b>CONSULTANTS:</b>		<b>ARCHITECT/ENGINEERS:</b>		<b>Drawing Title</b>		<b>Project Title</b>		<b>Project Number</b>		<b>Office of Construction and Facilities Management</b> 	
 LP Consulting Engineers, Inc. 895 W. Ashlan Ave, Suite 101, Clovis, CA 93612 p 559-432-1249 - f 559-432-1625 www.lpeengineers.com Job #: 10-1096		 HMC Architects 1827 E. Fir Avenue, Studio 103 / Fresno, CA 93720 T 559 322 2444 / www.hmcarchitects.com		LINE DIAGRAM		BUILDING 24 SEISMIC CORRECTION AND ADDITION		570-215			
				Approved: Project Director		Location VAMC FRESNO, CA		Building Number 24			
Revisions:		Date:		Date January 31, 2012		Checked PK		Drawn PK/LS			
								Drawing Number ES003		Dwg. 153 of 160	