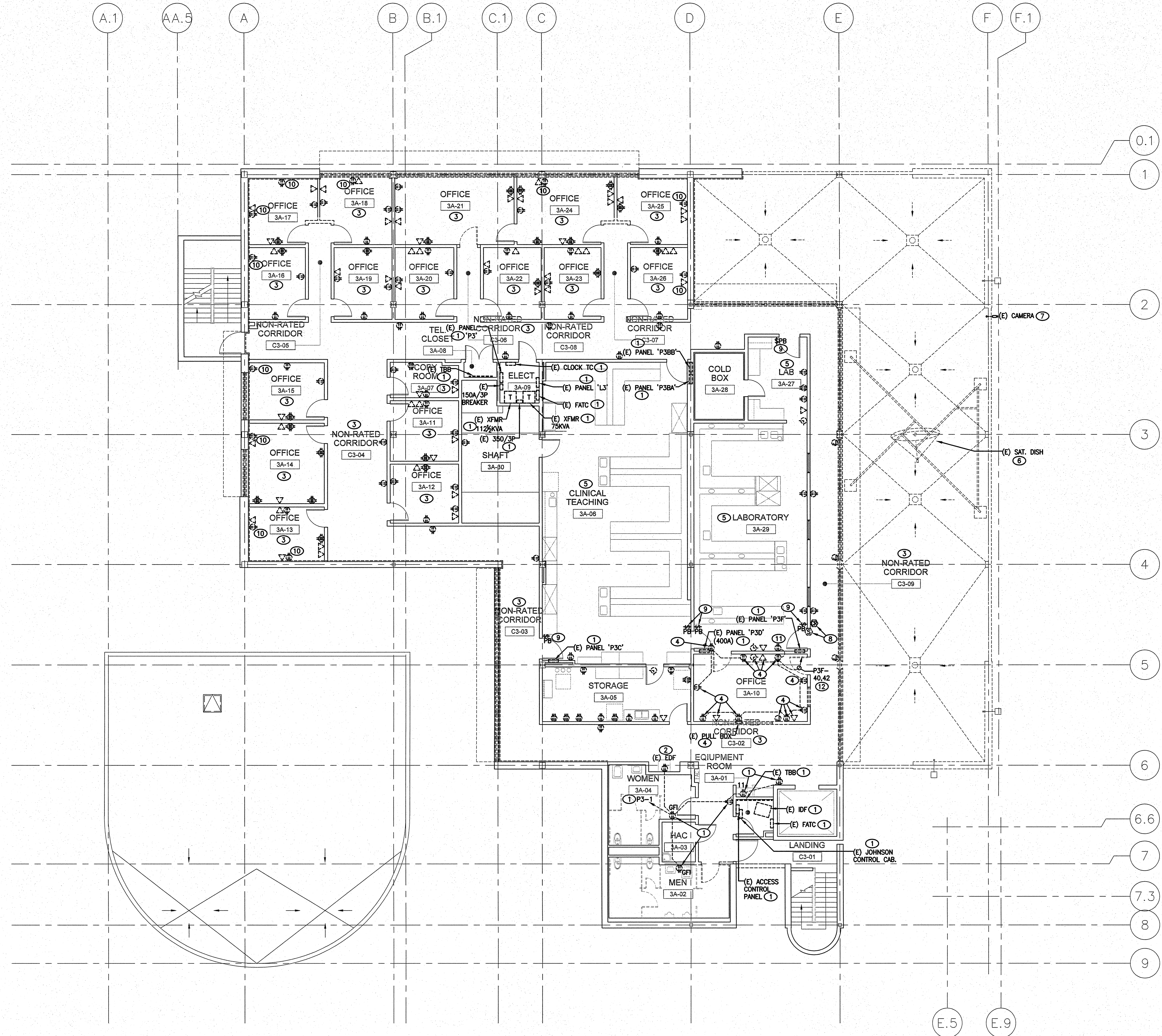


three inches = one foot
one and one half inches = one foot
one inch = one foot
three quarters inch = one foot
one half inch = one foot
one quarter inch = one foot
three eighths inch = one foot
one eighth inch = one foot
one quarter inch = one foot
one eighth inch = one foot



- THIRD FLOOR ELECTRICAL DEMO NOTES:**
- EXISTING ELECTRICAL TO REMAIN.
 - EXISTING ELECTRIC DRINKING FOUNTAIN TO BE REPLACED. REMOVE EXISTING RECEPTACLE AND WIRING. PROVIDE NEW SFI RECEPTACLE WITH NEW WALL PLATE, NEW CONDUITS AND WIRING. COORDINATE WITH SUPPLIER THROUGH COTR.
 - REFER TO ARCHITECTURAL PLANS FOR EXISTING WALLS TO RECEIVE NEW WALL COVERINGS OR FINISH. CONTRACTOR SHALL VERIFY IN FIELD LOCATION OF ALL EXISTING ELECTRICAL OUTLETS, DEVICES AND EQUIPMENT IN OR ON WALL. REMOVE AND REINSTALL EXISTING DEVICE PLATES AT FLUSH OUTLETS, WITH NEW EXTENSION RING AND NEW WALL PLATE. REMOVE AND REINSTALL EXISTING SURFACE ELECTRICAL ON WALL.
 - REMOVE EXISTING ELECTRICAL OUTLETS, DEVICES AND WIRING.
 - REFER TO ARCHITECTURAL PLANS FOR EXISTING WALLS TO RECEIVE NEW WALL COVERINGS OR FINISH. CONTRACTOR SHALL VERIFY IN FIELD LOCATION OF ALL EXISTING ELECTRICAL OUTLETS, DEVICES AND EQUIPMENT IN OR ON WALL. NOT ALL EXISTING ELECTRICAL ARE SHOWN. REMOVE AND REINSTALL EXISTING DEVICE PLATES AT FLUSH OUTLETS, WITH NEW EXTENSION RING AND NEW WALL PLATE. REMOVE AND REINSTALL EXISTING SURFACE ELECTRICAL ON WALL.
 - REMOVE EXISTING SATELLITE DISH AND RELATED CONDUITS AND CABLES. RETURN DISH TO OWNER.
 - REMOVE EXISTING SECURITY CAMERA AND RELATED CONDUITS AND CABLES. RETURN CAMERA TO OWNER.
 - EXISTING ACCESS CONTROL CARD READER AND ELECTRIC STRIKE, TO REMAIN.
 - EXISTING EMERGENCY PUSH BUTTON STATIONS AND WIRING FOR EMG PANEL POWER SHUTOFF, TO REMAIN.
 - INSIDE OF ALL EXTERIOR WALLS ARE TO BE FURRED. REFER TO ARCHITECTURAL PLANS FOR INFO AND DETAILS. CONTRACTOR SHALL PROVIDE EXTENSION RINGS AND NEW WALL PLATES TO BRING EXISTING DEVICE OUT WITH THE FRONT EDGE OF THE RING FLUSH WITH FINISHED WALL SURFACE.
 - EXISTING RECEPTACLE TO BE RECONNECTED.
 - REMOVE EXISTING HOMERUN CONDUIT AND WIRING.

1 DEMOLITION THIRD FLOOR ELECTRICAL PLAN
1/8" = 1'-0"

CONSULTANTS: LP Consulting Engineers, Inc. 895 W. Ashlan Ave, Suite 101, Clovis, CA 93612 p 559-432-1249 • f 559-432-1625 www.lpeengineers.com Job #: 10-1096		ARCHITECT/ENGINEERS: HMC Architects 1827 E. Fir Avenue, Studio 103 / Fresno, CA 93720 T 559 322 2444 / www.hmcarchitects.com		Drawing Title DEMOLITION THIRD FLOOR ELECTRICAL PLAN Approved Project Director		Project Title BUILDING 24 SEISMIC CORRECTION AND ADDITION Location VAMC FRESNO, CA Date January 31, 2012 Checked PK Drawn PK/LS		Project Number 570-215 Building Number 24 Drawing Number ED302 Dwg. 163 of 180		Office of Construction and Facilities Management 	
---	--	--	--	--	--	---	--	---	--	---	--