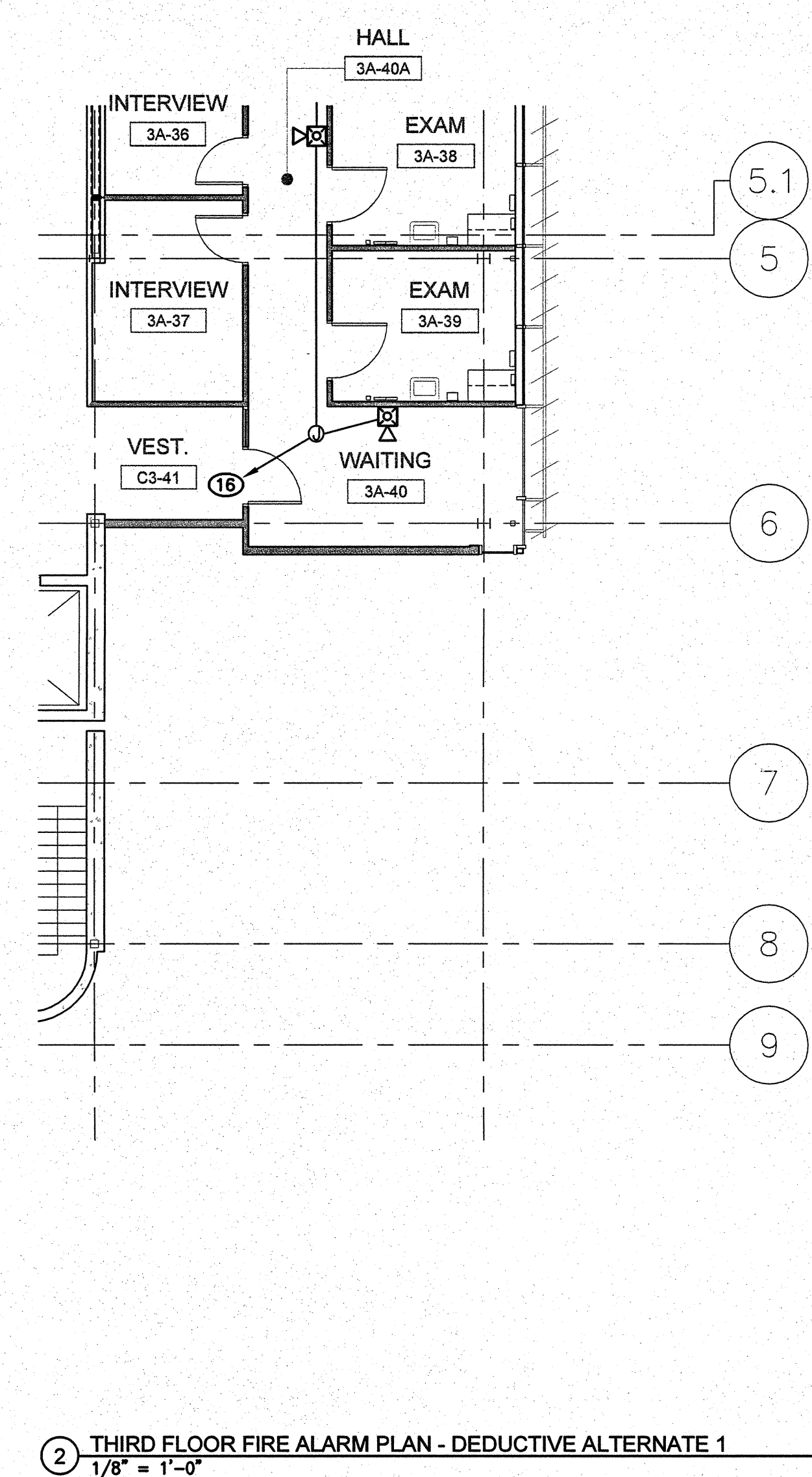


1 THIRD FLOOR FIRE ALARM PLAN
1/8" = 1'-0"

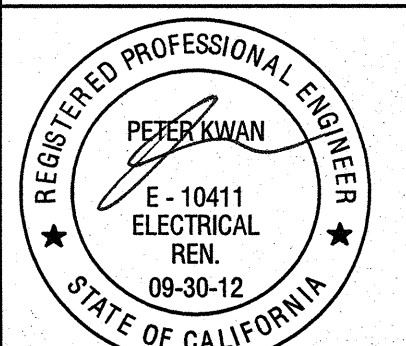




2 THIRD FLOOR FIRE ALARM PLAN - DEDUCTIVE ALTERNATE 1
1/8" = 1'-0"

- THIRD FLOOR FIRE ALARM PLAN NOTES:**
- EXISTING FATC TO REMAIN.
 - PROVIDE NEW FIRE ALARM NAC POWER EXTENDER, HOMERUN TO PANEL. PROVIDE NW 20A/1P BREAKER WITH LOCK-ON DEVICE. LABEL "FIRE ALARM".
 - TYPICAL: REFER TO SHEET ES001 FOR FIRE ALARM LEGEND.
 - EXISTING ADDRESSABLE SMOKE DETECTOR IN EXISTING ELEVATOR LOBBY FOR ELEVATOR RECALL FUNCTION, TO REMAIN. RECONNECT TO NEW FIRE ALARM SYSTEM.
 - EXISTING FIRE ALARM INITIATION DEVICES TO REMAIN. RECONNECT TO FIRE ALARM CIRCUIT.
 - PROVIDE NEW ADDRESSABLE SMOKE DETECTOR IN ELEVATOR LOBBY. PROGRAM FOR ELEVATOR RECALL FUNCTION.
 - PROVIDE NEW SMOKE DETECTOR AND HEAT DETECTOR IN EXISTING ELEVATOR SHAFT ADJACENT TO NEW FIRE SPRINKLER HEAD LOCATION. PROVIDE SMOKE DETECTOR FOR ELEVATOR CAR RECALL AND HEAT DETECTOR FOR EMERGENCY POWER SHUT DOWN OF ELEVATOR POWER. COORDINATE LOCATION WITH SPRINKLER CONTRACTOR.
 - PROVIDE NEW SMOKE DETECTOR AND HEAT DETECTOR IN NEW ELEVATOR SHAFT ADJACENT TO NEW FIRE SPRINKLER HEAD LOCATION. PROVIDE SMOKE DETECTOR FOR ELEVATOR CAR RECALL AND HEAT DETECTOR FOR EMERGENCY POWER SHUT DOWN OF ELEVATOR POWER. COORDINATE LOCATION WITH SPRINKLER CONTRACTOR.
 - PROVIDE NEW FIRE ALARM ADDRESSABLE INITIATION DEVICES.
 - TYPICAL: PROVIDE NEW NAC DEVICE, ON WALL UNLESS OTHERWISE NOTED.
 - TYPICAL: "C" DENOTES CEILING MOUNTED NAC DEVICE.
 - 3/4"C WITH ONE "A" ADDRESSABLE DEVICE CABLE.
 - 3/4"C WITH 2#12.
 - 3/4"C WITH 4#12.
 - 1"C WITH ONE "A" ADDRESSABLE DEVICE CABLE, + 2#12.
 - 1"C WITH ONE "A" ADDRESSABLE DEVICE CABLE, + 2#12, TO FATC #3A.
 - 1"C WITH ONE "A" ADDRESSABLE DEVICE CABLE, + 4#12, TO FATC #3A.
 - RUN FROM NAC PANEL TO FATC: ONE 1-1/4"C WITH ONE ADDRESSABLE "A" CABLE + 8#12.

- GENERAL FIRE ALARM SYSTEM NOTES:**
- EXISTING BLDG CURRENTLY HAS A MANUAL FIRE ALARM SYSTEM. SCOPE OF FIRE ALARM WORK IS TO EXTEND THE EXISTING MANUAL FIRE ALARM PER CURRENT NFPA 101 AND ADA REQUIREMENT.
 - EXISTING FIRE ALARM SYSTEM CONSISTS OF A SIMPLEX #4100 ADDRESSABLE FIRE ALARM CONTROL PANEL WITH SIMPLEX ADDRESSABLE INITIATION DEVICES AND NAC DEVICES. ALL NEW DEVICES SHALL BE AS MANUFACTURED BY SIMPLEX, COMPATIBLE WITH THE EXISTING #4100 FIRE ALARM SYSTEM.
 - FIRE ALARM SYSTEM SUPPLIER SHALL ASSIST ELECTRICAL CONTRACTOR IN THE DEMO FIRE ALARM WORK AND NEW FIRE ALARM WORK TO ACCOMMODATE PHASING OF THE PROJECT.
 - ALL PROGRAMMING AND TESTING AS REQUIRED FOR A COMPLETE OPERABLE MANUAL FIRE ALARM SYSTEM SHALL BE DONE BY EXISTING FIRE ALARM SYSTEM SUPPLIER AND ALL COST SHALL BE INCLUDED IN THE CONTRACT.
 - CONTRACTOR SHALL PROVIDE NEW SUPPORT PER CODE FOR ALL EXISTING FIRE ALARM CONDUITS THAT REMAIN, IN ATTIC OR SURFACE MOUNTED ON CEILINGS AND WALLS.

three inches = one foot
one and one half inches = one foot
one inch = one foot
three quarters inch = one foot
one half inch = one foot
one quarter inch = one foot
one eighth inch = one foot

CONSULTANTS:  LP Consulting Engineers, Inc. 895 W. Ashlan Ave, Suite 101 Clovis, CA 93612 p 559-432-1249 • f 559-432-1625 www.lpeengineers.com Job #: 10-1096		ARCHITECT/ENGINEERS:  HMC Architects 1827 E. Fir Avenue, Studio 103 / Fresno, CA 93720 T 559 322 2444 / www.hmcarchitects.com		Drawing Title THIRD FLOOR FIRE ALARM PLAN		Project Title BUILDING 24 SEISMIC CORRECTION AND ADDITION		Project Number 570-215 Building Number 24		Office of Construction and Facilities Management 	
Revisions Date		Approved Project Director		Location VAMC FRESNO, CA		Date January 31, 2012		Checked FK		Drawn FK/LS	
								Drawing Number ES303 Dwg. 177 of 180			