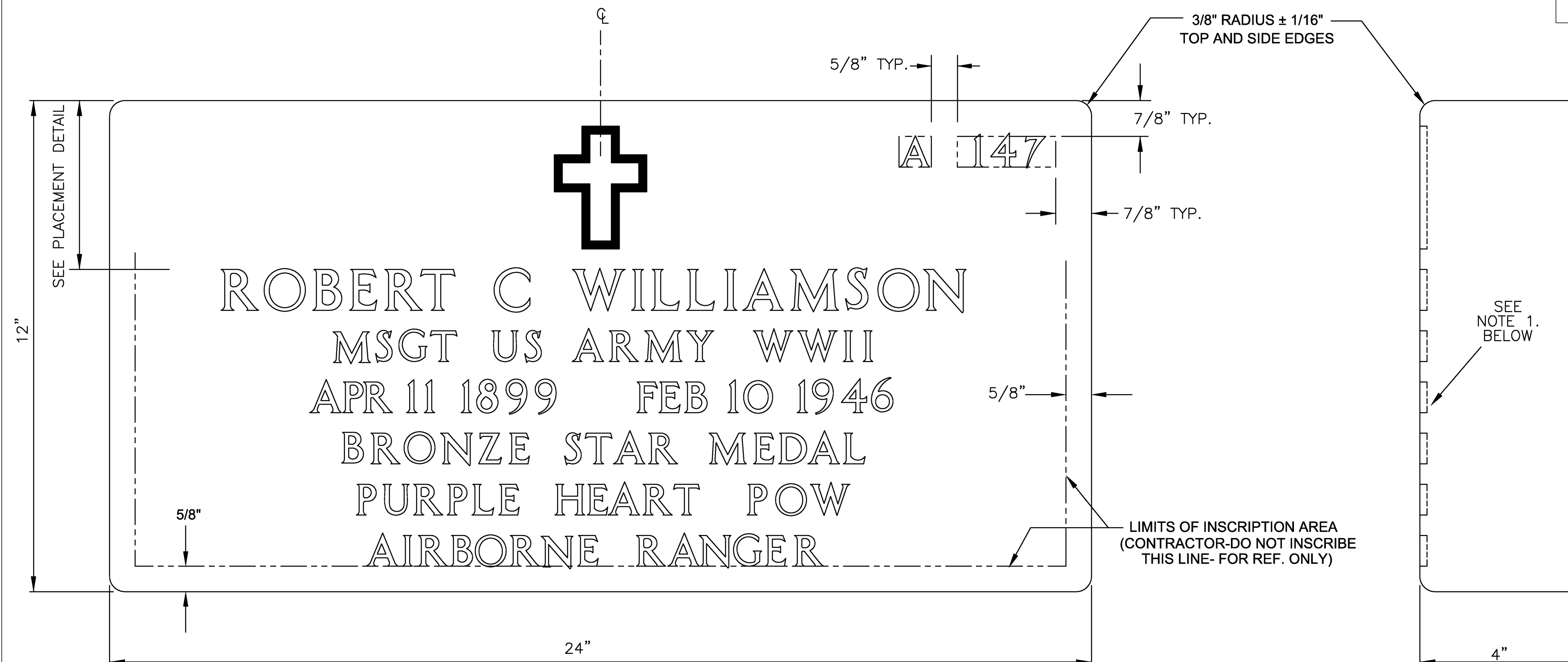
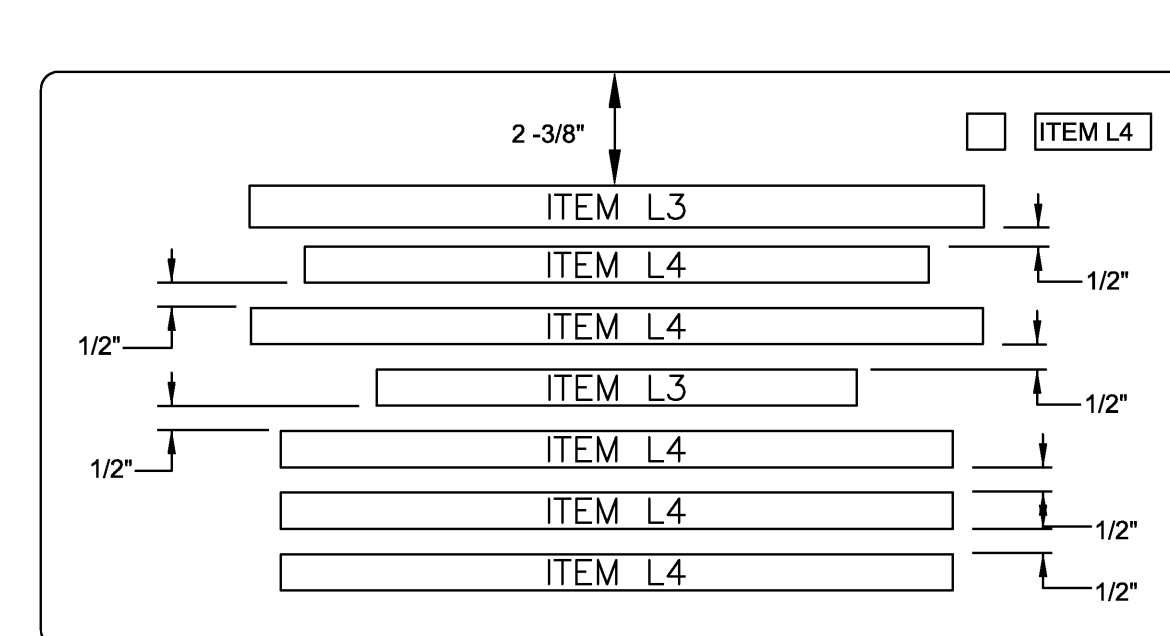
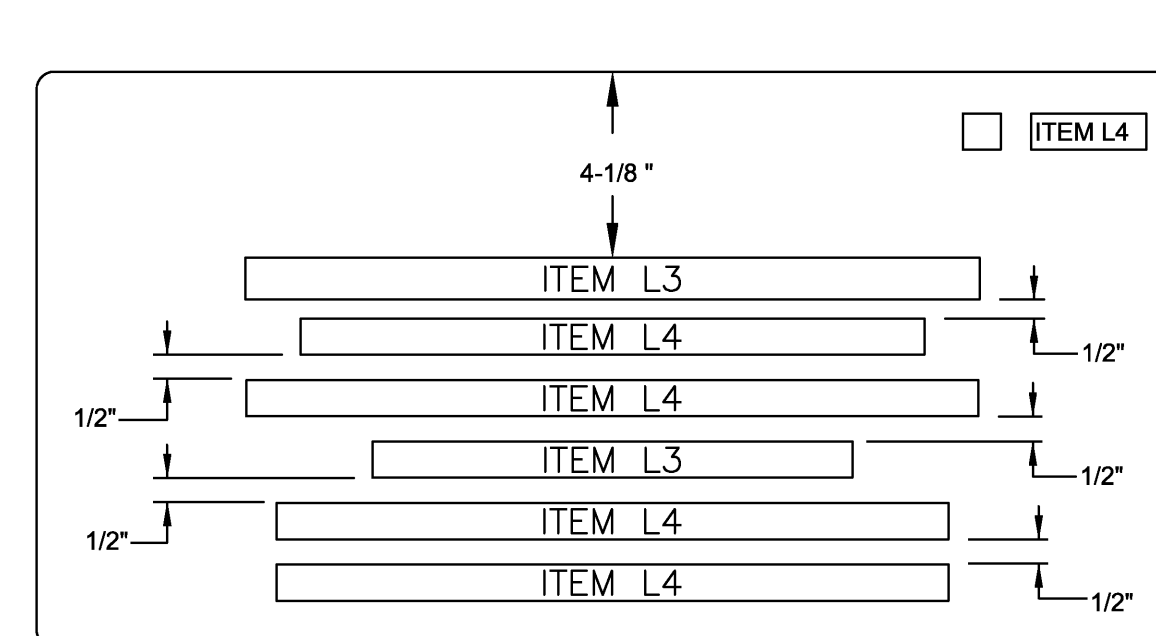
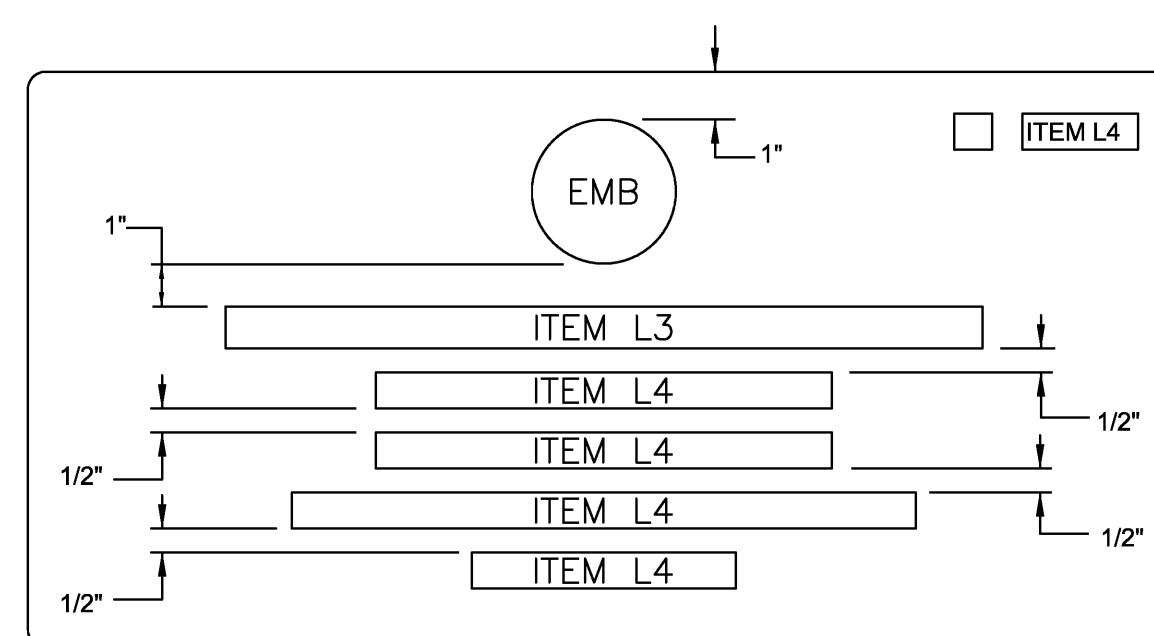
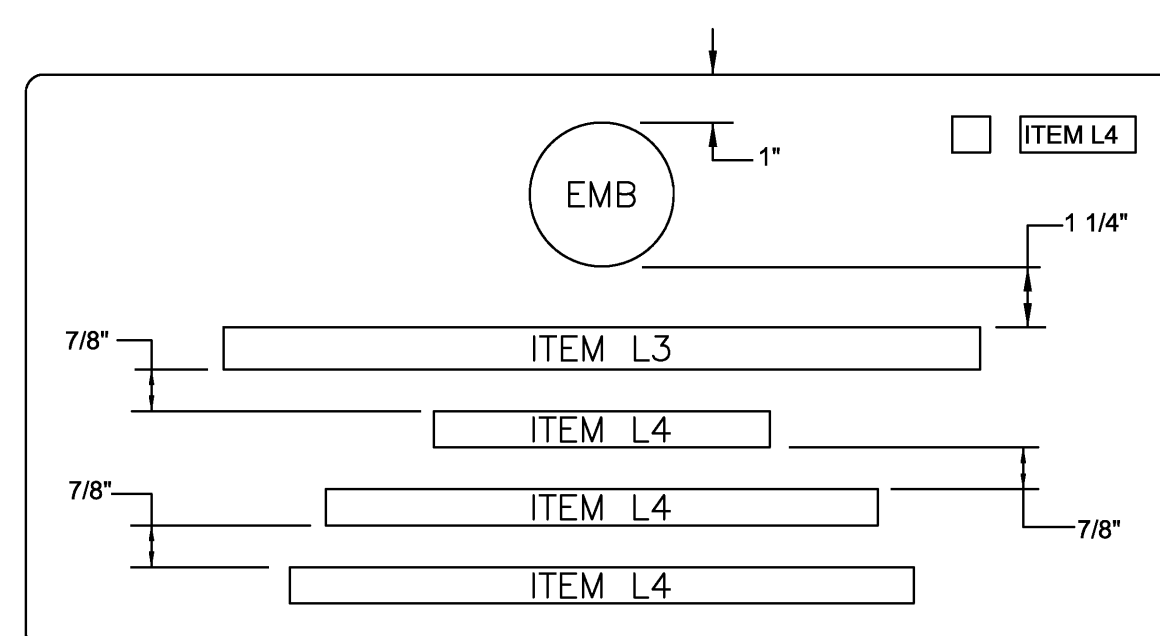
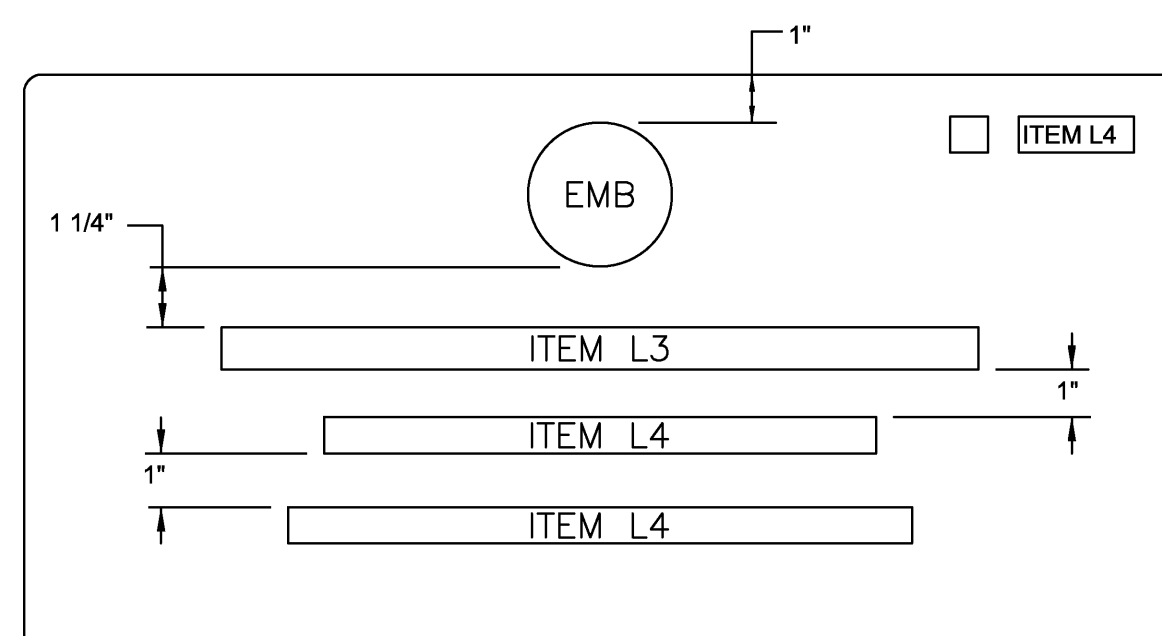
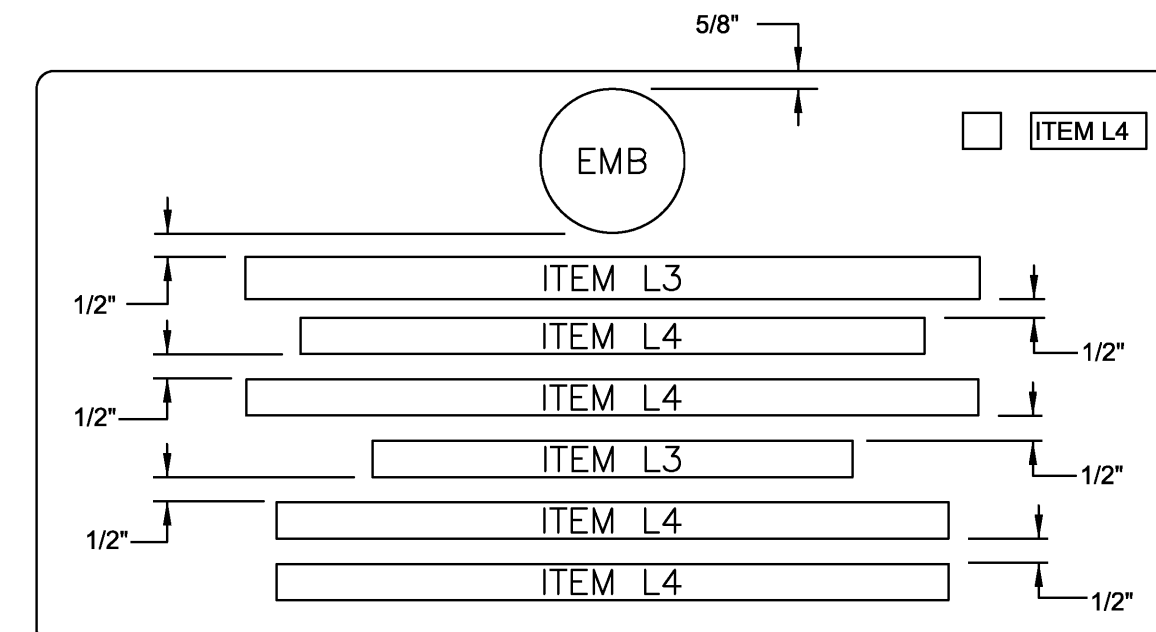
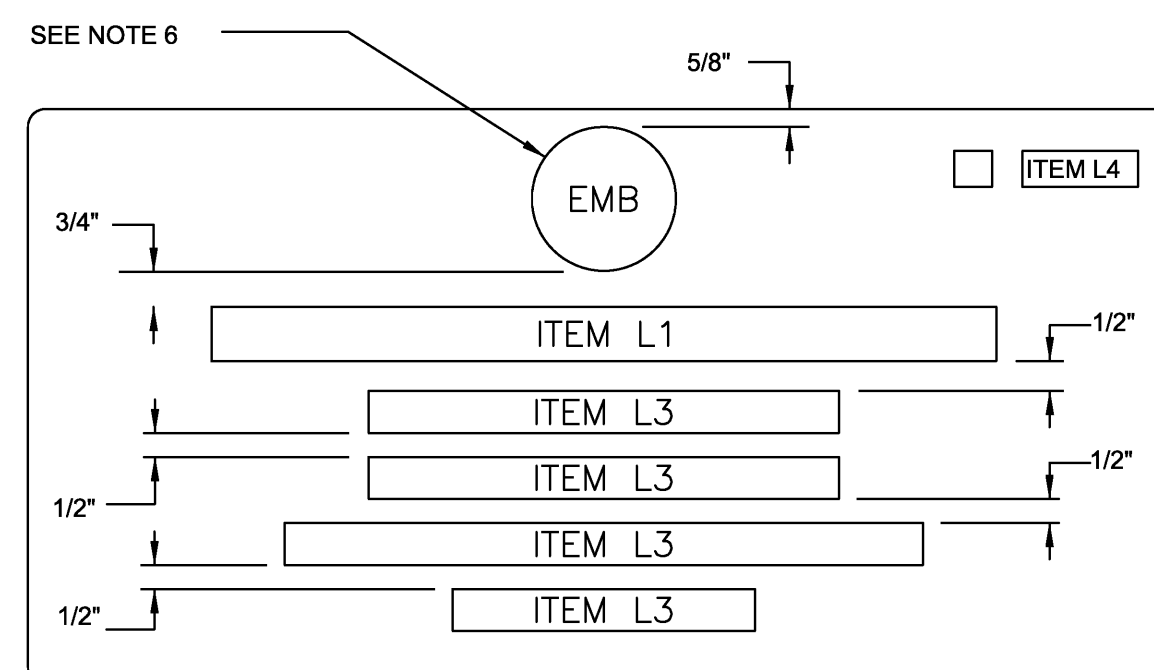
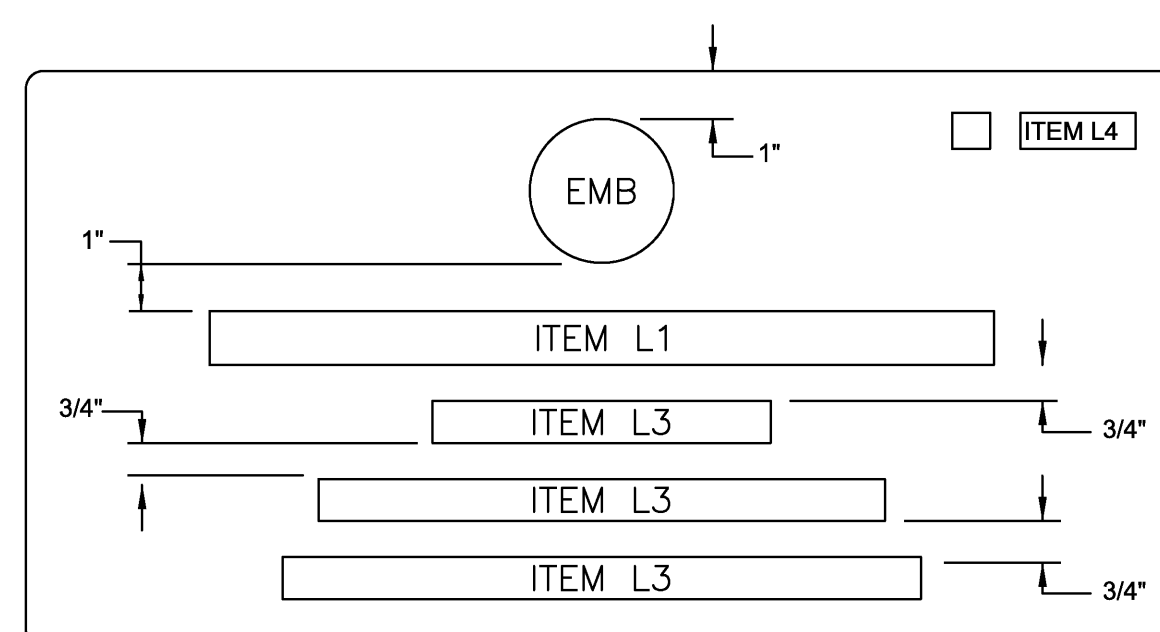
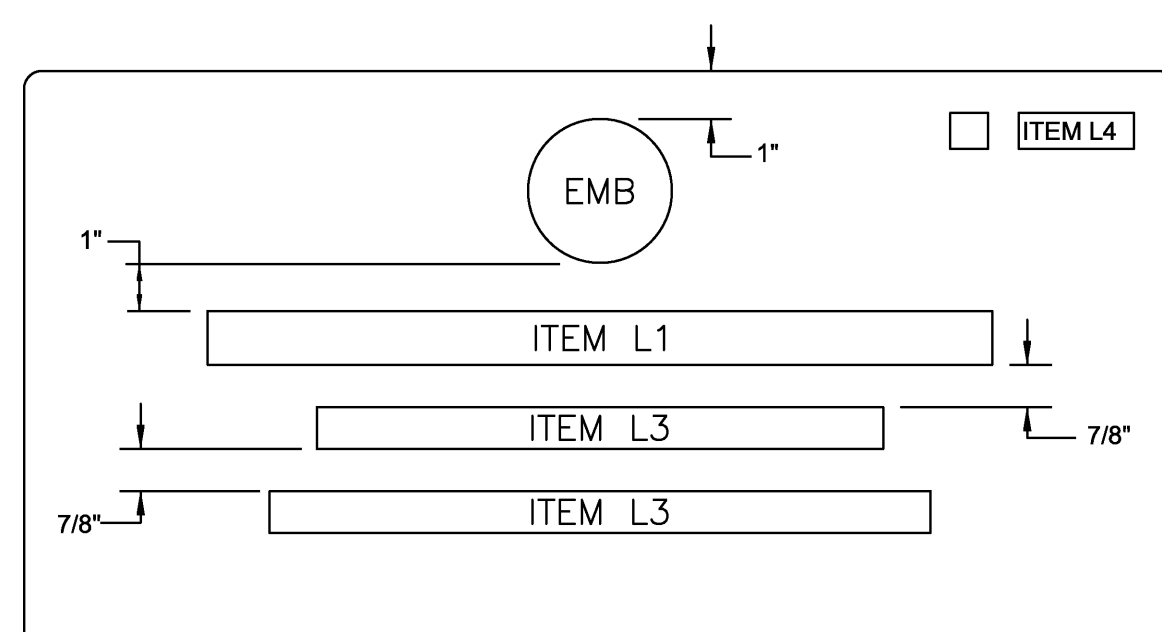


MEMORIAL INSCRIPTION  
SCALE: 1/4"=1'



FOR UPRIGHT & FLAT MARBLE HEADSTONES/MARKERS		
COLOR OF STONE:	N8 OR HIGHER AS JUDGED AGAINST THE MUNSSELL NEUTRAL VALUE SCALE	
LITHOCHROME APPLICATION:	N4 OR LOWER AS JUDGED AGAINST THE MUNSSELL NEUTRAL VALUE SCALE	
INSCRIPTION DEPTHS:	MAXIMUM	MINIMUM
FOR L-1 LETTERS	7/32"	5/32"
FOR L-3 & L-4 LETTERS:	5/32"	4/32"



### STANDARD INSCRIPTION

SCALE: 1/4"=1"

ENGLISH/ U.S. STANDARD	METRIC	ENGLISH/ U.S. STANDARD	METRIC
42"	106.68 cm	2"	5.08 cm
24"	60.96 cm	1 5/8"	4.13 cm
14 1/2"	36.83 cm	1"	2.54 cm
13"	33.02 cm	3/4"	1.90 cm
4"	10.16 cm	5/8"	1.59 cm
3"	7.62 cm	1/2"	1.27 cm
2 1/2"	6.35 cm	1/4"	.64 cm



NATIONAL  
CEMETERY  
ADMINISTRATION

Drawing Title <b>FLAT MARBLE MARKER</b> <b>12" X 24" X 4"</b> *		Project Title <b>GOVERNMENT HEADSTONES AND MARKERS</b> *		Date <b>06-05-03</b>
Approved: Director, Memorial Programs Service Signed		Marker Type <b>F1</b>	Checked	Drawn <b>DURHAM &amp; ASSOC.</b>
Approved: Chief of Operations, Memorial Programs Service Signed		Location Digital File <b>A-F1 DWG. 24" x 36" SHEET</b>		DRAWING NO. <b>A-F1</b> Sheet <b>1</b> Of <b>1</b>