



## Design Conditions Datasheet

Unit Tag	Qty	Model No	Net Cooling Capacity (ton.R)	Nominal Voltage	Refrigerant Type
CH-2	1	YLAA0120SE46XFBSDTX	100.4	460-3-60.0	R410A

<b>PIN:</b>								
YLAA0120SE	46XFBSDTXA	XXBLXCXX36	SE1XXXHXDX	YAXGXXX7BX	XXX11TXXXX			
....5...10	....5...20	....5...30	....5...40	....5...50	....5...60	....5...70	....5...80	....5...90

Evaporator Data			Evaporator Data (Cont.)		Performance Data	
EWT (°F)	50.60		Fluid Volume (USGAL)	13.21	EER (Btu/W·h)	8.059
LWT (°F)	36.00		Min. Flow Rate (USGPM)	150.6	NPLV.IP (Btu/W·h)	13.80
Design Flow Rate (USGPM)	167.4		Max. Flow Rate (USGPM)	624.5		
Evap. Press. Drop (ft H2O)	3.58					
Fluid	Propylene Glycol (%)	20	Condenser Data		Physical Data	
Strainer Press. Drop (ft H2O)	2.74		Ambient Temp. Design (°F)	100.0	Rigging Wt. (lb)	5688
Ext. Kit Press. Drop (ft H2O)	0.000		Altitude (ft)	0.000	Operating Wt. (lb)	5800
Total Press. Drop (ft H2O)	6.32		Compressor Type	Scroll - Hermetic	Refrigerant Charge (lb)	115.9
Fouling Factor (h.ft².F/Btu)	0.000100					

Electrical Data				
Circuit	1	2	3	4
Compressor RLA	53 / 53	53 / 53		
Fan QTY/FLA (each)	3 / 4	3 / 4		
High LRA Current	290 / 290	290 / 290		

Single Point				
Min. Circuit Ampacity	254			
Recommended Fuse/CB Rating	300			
Max. Inverse Time CB Rating	300			
Max. Dual Element Fuse Size (A)	300			
Unit Short Circuit Withstand (STD)	5 [kA]			
Wires Per Phase	2 + 1			
Wire Range (Lug Size)	#3/0 AWG - 250 kcmil + 250 - 500 kcmil			
Starter Type	Across The Line			
			Operating Condition Electrical Data	
			Compressor kW	139.5
			Total Fan kW	10.08
			Total kW	149.5

### Notes:

Certified in accordance with the AHRI Air-Cooled Water-Chilling Packages Using Vapor Compression Cycle Certification Program, which is based on AHRI Standard 550/590 (I-P) and AHRI Standard 551/591 (SI). Unit containing freeze protection fluids in the condenser or in the evaporator with a leaving chilled fluid temperature above 32 DEG F [0 DEG C] is certified when rated per the Standard with water. Certified units may be found in the AHRI Directory at [www.ahridirectory.org](http://www.ahridirectory.org). Auxiliary components included in total kW - Oil heaters, Chiller controls. Auxiliary power is already included in the compressor and fan power





## Design Conditions Datasheet

Part Load Rating Data				
Stage	Ambient (°F)	Capacity (ton.R)	Total kW	Unit Efficiency
1	100.0	100.4	149.5	8.059
2	86.0	85.44	95.11	10.78
3	73.6	64.66	54.76	14.17
4	55.0	30.68	23.52	15.65

Sound Power Levels (In Accordance with AHRI 370)										
Stage	Ambient (°F)	63 Hz (dB)	125 Hz (dB)	250 Hz (dB)	500 Hz (dB)	1 kHz (dB)	2 kHz (dB)	4 kHz (dB)	8 kHz (dB)	LWA
1	100.0	98	97	93	93	89	85	82	80	95
2	86.0	98	97	93	93	89	85	82	79	95
3	73.6	98	97	93	93	89	85	82	79	94
4	55.0	90	89	85	85	82	78	74	72	87

Note: Unit is equipped with Acoustic Sound Blanket and Low Sound Fans.

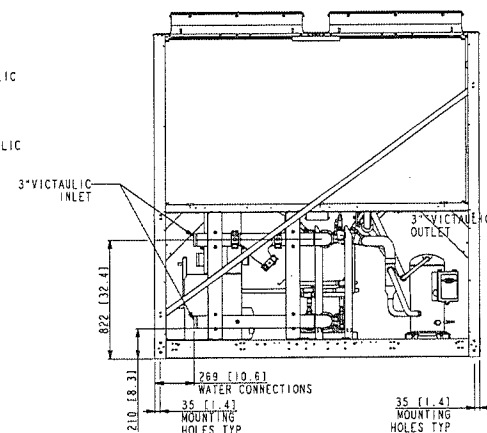
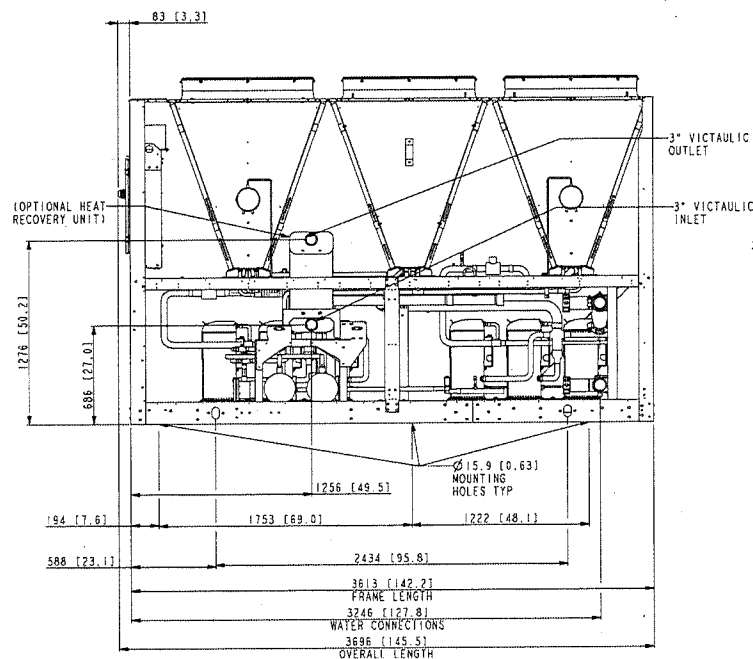
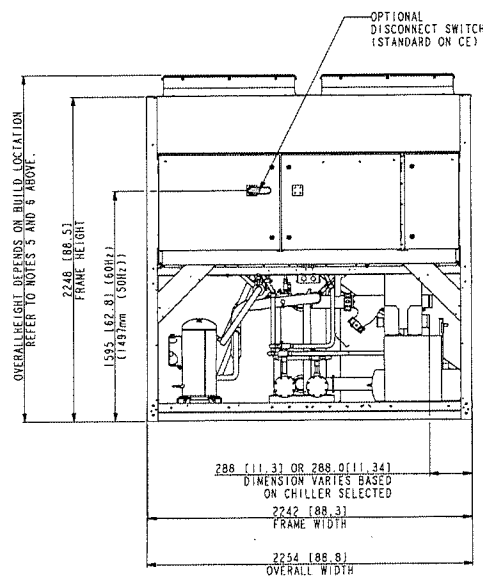
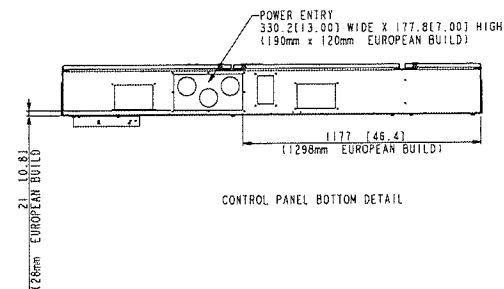
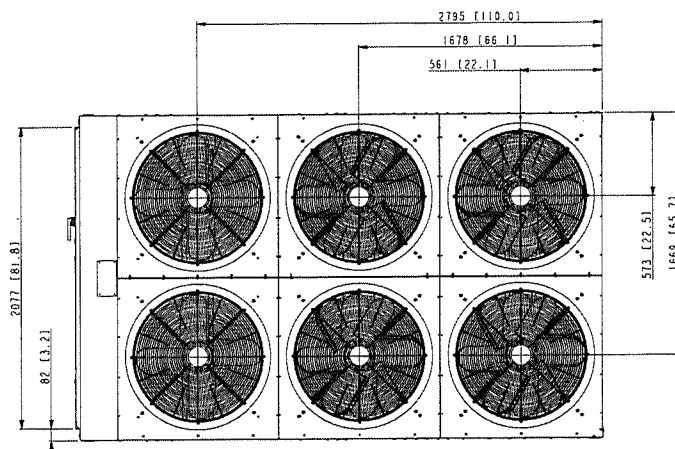
Performance at AHRI Conditions					
Evaporator Data		Condenser Data		Performance Data	
EWT (°F)	54.00	Ambient Temp. (°F)	95.0	EER (Btu/W-h)	9.782
LWT (°F)	44.00	Altitude (ft)	0.000	IPLV.IP (Btu/W-h)	14.96
Flow Rate (USGPM)	286.3			Net Cooling Capacity (ton.R)	119.9
Pressure Drop (ft H <sub>2</sub> O)	8.47				
Fluid	Water				
Fouling Factor (h.ft <sup>2</sup> .F/Btu)	0.000100				
Fluid Volume (USGAL)	13.21				

Note: Unit rated at design condition capacity.

NOTES:

- NOTES:
1. PLACEMENT ON A LEVEL SURFACE FREE OF OBSTRUCTIONS (INCLUDING SNOW, FOR WINTER OPERATION) OR AIR RE-CIRCULATION ENSURES OPTIMIZED PERFORMANCE. RELIABLE OPERATION AND EASE OF MAINTENANCE OF THE SITE RESTRICTIONS MAY COMBINE WITH MINIMUM CLEARANCES INDICATED BELOW, RESULTING IN UNPREDICTABLE AIR FLOW PATTERNS AND POSSIBLE DIMINISHED PERFORMANCE. JOHNSON CONTROLS UNIT CONTROLS WILL OPTIMIZE OPERATION WITHOUT NUISANCE HIGH PRESSURE SAFETY CUTOFF. HOWEVER, THE SYSTEM DESIGNER MUST CONSIDER POTENTIAL PERFORMANCE DEGRADATION.


- 1.1. RECOMMENDED MINIMUM CLEARANCES:
  - 1.1.1. SIDE TO WALL - 1828.8mm[6']
  - 1.1.2. REAR TO WALL - 1828.8mm[6']
  - 1.1.3. CONTROL PANEL TO WALL - 1219.2mm[4']
  - 1.1.4. TOP - NO OBSTRUCTIONS ALLOWED.
  - 1.1.5. DISTANCE BETWEEN ADJACENT UNITS - 3048mm[10']
  - 1.1.6. NO MORE THAN ONE ADJACENT WALL MAY BE HIGHER THAN UNIT.
2. WEIGHT AND CENTER OF GRAVITY - REFER TO AVM REPORT.
3. INSTALLING CONTRACTOR MUST INCLUDE VENT AND DRAIN ACCOMMODATIONS IN CHILLED WATER PIPING NEAR THE EVAPORATOR.
4. NUMBER OF COMPRESSORS MAY VARY FROM DRAWING.
  - 4.1. REFER TO YORKWORKS REPORTS.
5. OVERALL HEIGHT OF UNIT IS 2394.6mm-[94.27"] ON MONTERREY, MEXICO AND SAN ANTONIO, TEXAS BUILDS AND EUROPEAN BUILDS (VS0 FANS ONLY).
6. OVERALL HEIGHT OF UNIT IS 2507.0mm-[98.70"] ON EUROPEAN BUILDS (STANDARD FANS ONLY).
7. FOR MONTERREY, MEXICO, SAN ANTONIO, TEXAS AND EUROPEAN BUILDS ONLY.



THIS DRAWING PERTAINS TO THE FOLLOWING MODELS:		
YLAA 0092 HE	YLAA 0350 HE	YLAA 0391 HE
YLAA 0101 HE	YLAA 0390 HE	YLAA 0392 HE
YLAA 0115 SE	YLAA 0435 SE	
YLAA 0120 SE	YLAA 0485 SE	

	REV	DATE	E.C. NO.	DR.	CNK.	ENG.
<b>REVISION</b>	E	17-JAN-2018	DX17-0373	E.J	A.S	
	PIEWS AMENDED TO SHOW NEW WATER CONNECTIONS, NEW UNIT MODEL ADDED TO TABLE					

\*ALL PROPRIETARY RIGHTS  
THE SUBJECT MATTER HEREIN  
ARE RESERVED AND NO  
PERMISSION IS GRANTED TO  
REPRODUCE THIS PRINT IN  
WHOLE OR IN ANY PART, OR  
DISCLOSE ANY OF THE  
INFORMATION UPON IT TO  
OTHERS WITHOUT WRITTEN  
CONSENT OF JOHNSON  
CONTROLS INCORPORATED\*



JOHNSON CONTROLS - BUILDING EFFICIENCY  
507 EAST MICHIGAN STREET, MILWAUKEE, WI, 53202 USA

DO NOT SCALE

DRAWN N.L.

MOELER N.L.

CRKD A.S.  
CNC

SCALE: 1.

<p> <b>TLAA 6-FAN</b> </p>
----------------------------

30HZ &amp; 60HZ

06-DEC-2013 WITH OPTIONAL HEAT RECOVERY

06-DEC-2011	A 1	CAGE NUMBER	
-------------	-----	-------------	--

06-DEC-2013	A	66935	0
-------------	---	-------	---

Wgt: 0.000	ORIG. NO.:
------------	------------

MATERIAL	N/A
----------	-----

ENG. STD. N/A  
PART NO.

CUT SIZE N/A

DRAWING NUMBER	REVISION
----------------	----------

35-24059-006

SHEET 1 OF 1	RELEASED
--------------	----------