

UTAH

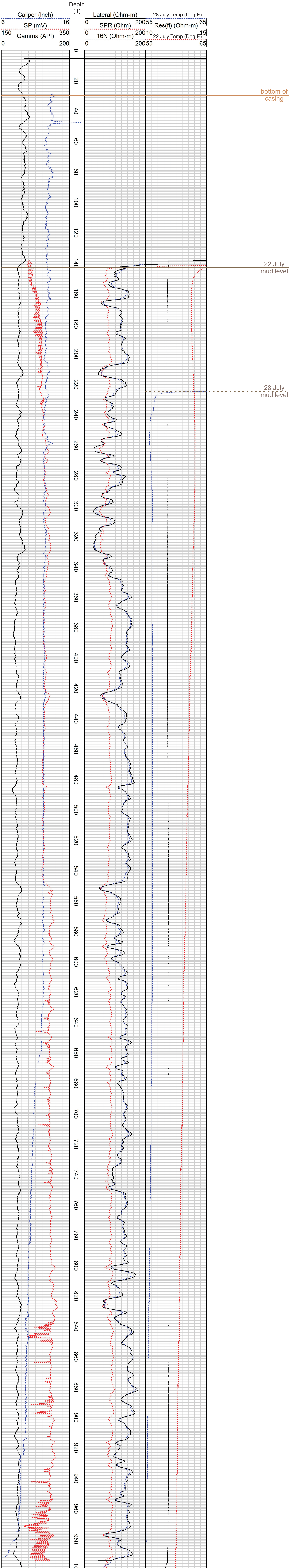
DNR

GEOLOGICAL SURVEY

Geophysical Well Log

Gamma and E-logs

DWRi #	1057004M00	WIN	433935	Ground Elevation	4750 ft
Owner	U.S. Department of Veteran Affairs			Log Measured from	Ground Level
Driller	Grimshaw Drilling			Drilling Measured from	Ground Level
Location	500 Foothill Blvd., Salt Lake City			Total Depth	1000 ft
County	Salt Lake	State	Utah	Depth to Water	
				Drilling Fluid	Bentonite
Location (DWRi)				Casing	
Location (GPS)				Type	Dia.
Date 22 July 2010				From	
Time 11:00 AM				To	
Geologist Kevin Thomas				Comments	
				Additional Geophysical Logs	
				Additional Temperature log run 28 Jul10	



Although this product represents the work of professional scientists, the Utah Department of Natural Resources, Utah Geological Survey makes no warranty, expressed or implied, regarding its suitability for a particular use. The Utah Department of Natural Resources, Utah Geological Survey, shall not be liable under any circumstances for any direct, indirect, special, incidental, or consequential damages with respect to claims by users of this product.